

Philips  
Mini Hi-Fi System

### Bluetooth®

Channel fader between 2 USBs  
CD, MP3-CD, 2 USB, Tuner  
3600W, NX bass, 20" subwoofer



NTRX900



## The ultimate sound machines

Hear bass like you've never heard it before on this NX bass equipped 3600W Philips system with 20" subwoofer. Create the ultimate party with Auto DJ mixing tracks on USB devices, 260K LED lighting effects and Bluetooth streaming.

### Engineered for powerful sound

- 3600W RMS total output power/ 40800W PMPO
- 20" subwoofer for super bass performance
- 5-band equalizer provides a personal music experience
- NX bass button for instant sound boost & light effects

### Enjoy your music from multiple sources

- Enjoy MP3 music directly from your portable USB devices
- Rip music from CDs, radio and karaoke onto USB device
- Music transfer between 2 USB for easy music sharing
- Stream music via Bluetooth®

### Designed to party

- 260K LED lights for great party atmosphere
- Auto-DJ for automatic mixing of tracks on USB drive
- DJ Crossfader for mixing your tracks

# PHILIPS

## Mini Hi-Fi System

Bluetooth® Channel fader between 2 USBs, CD, MP3-CD, 2 USB, Tuner, 3600W, NX bass, 20" subwoofer

NTRX900/12

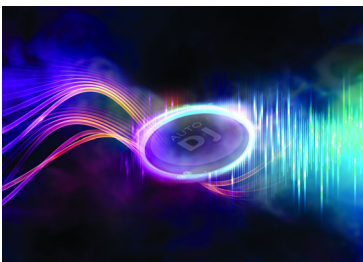
# Highlights

### 260K LED lights



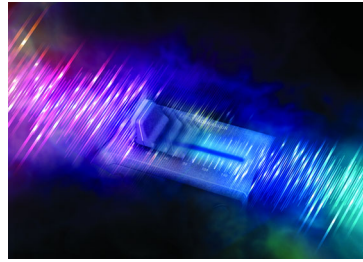
Add the ultimate atmosphere, ambiance and passion to any party, with thousands of colored lights that flicker, flash and flow in time with your music. Easily choose light colors to match your theme, or just pick one of the systems many presets. Flick the NX bass button to make the light show even more intense.

### Auto-DJ for automatic mixing



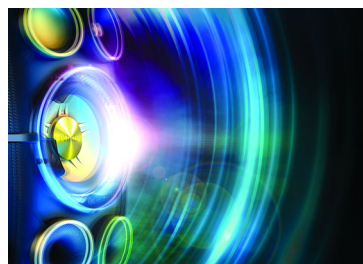
You can automate your tunes with Auto-DJ, which automatically mixes tracks on a connected USB drive. Add sound effects with the DJ jogwheel. Rock the house continuously!

### DJ Crossfader for mixing



Be the master of every party! DJ cross fader lets you mix your favorite tracks between channel A and B, so you can flow seamlessly between songs. Just select the device output for deck A (USB, Bluetooth®, CD, Audio in or tuner) to start the music, then choose the input device for deck B (USB or audio in). To change tracks, swipe the fader from one side to another for a smooth transition that keeps the party pumping.

### NX bass button



Available throughout the range, NX bass temporarily boosts bass and loudness to the extreme. Hit the NX bass button to instantly

juice up your sound, make lighting effects go wild, and feel the immense bass of the subwoofers thundering through your bones.

### Stream music via Bluetooth®



If you've got a big music collection stored away on a smartphone, tablet or computer, stream it to a NITRO system using digital Bluetooth® wireless music streaming and make it sound incredible. Powerful sound is rarely this easy or this convenient.

### 2 USB for easy music sharing



Music transfer between 2 USB for easy music sharing



# Specifications

## Sound

- Output power: 40800W PMPO
- Total Sound Power (RMS): 3600 W
- Sound enhancement: Digital sound control 5 modes, Dynamic Bass Boost 3 steps
- Equalizer: 63Hz, 250Hz, 1kHz, 4kHz, 12kHz

## Loudspeakers

- Number of speaker boxes: 2
- Speaker drivers: 8" woofer, 2" tweeter, 20" subwoofer
- Speaker types: bass reflex speaker system

## Audio playback

- Playback media: CD, CD-R, CD-RW, MP3-CD
- Disc playback modes: repeat/one/all/program, repeat/shuffle/program
- USB Direct playback modes: fast backward/fast forward, play/pause, previous/next, repeat, shuffle, stop

## Audio recording

- Recording media: USB device
- USB recording sources: CD, tuner, AUX, microphone in, USB
- USB recording modes: instant record, programmed tracks, schedule radio program, single disc, single track

## Tuner/Reception/Transmission

- Station presets: 40
- Tuner bands: FM, MW
- Antenna: FM antenna, MW antenna
- Tuner enhancement: auto digital tuning, auto scan, Easy set (plug & play)

## Connectivity

- MP3 Link: 3.5mm stereo line in
- Microphone: dual microphone sockets
- USB: Dual USB host
- PC in (Aux in): 2 x RCA (Audio)
- Headphone: 6.3 mm

## Convenience

- Number of discs: 1

- Loader type: tray
- Karaoke: MIC volume, echo control
- Display type: LCD display

## Accessories

- Remote control: 28-key with 2xAAA batteries
- Cables/Connection: audio cable
- Others: batteries for remote control, FM/MW antenna, Quick start guide
- User Manual: B-Portuguese, Spanish
- Warranty: World Wide Guarantee booklet

## Dimensions

- Gross weight (each box): 69.5 kg
- Main speaker dimensions (W x D): 667.9 x 547.2 mm
- Main speaker height: 1131.9 mm
- Main unit width: 526 mm
- Main unit height: 247 mm
- Main unit depth: 470 mm
- Main unit packaging width: 521 mm
- Main unit packaging height: 585 mm
- Main unit packaging depth: 314 mm
- Speaker box packaging width: 790 mm
- Speaker box packaging height: 1260 mm
- Speaker box packaging depth: 620 mm

## Auto DJ

- Metal
- Party

## DJ Effect

- Beat Box
- Reverb
- Scratch
- Yeah

## DJ Mix

- Headphone source: 2 (A and B)
- Source A: Audio in, Bluetooth, Disc, Tuner, USB
- Source B: Audio in, USB

## Power

- Power supply: 100 - 240V AC, 50/60Hz



Issue date 2015-06-22

Version: 1.0.1

12 NC: 8670 001 31337  
EAN: 48 95185 61795 4

© 2015 Koninklijke Philips N.V.  
All Rights reserved.

Specifications are subject to change without notice.  
Trademarks are the property of Koninklijke Philips N.V.  
or their respective owners.

[www.philips.com](http://www.philips.com)

\* Avoid extensive use of the set in a volume higher than 85 decibel because this may damage your hearing.