



SPA7380



User manual

PHILIPS



Important

Safety

Important safety instructions

- Read and follow all these instructions.
- The product shall not be exposed to dripping or splashing and no objects filled with liquids, such as vases, shall be placed on the product.
- To completely disconnect the power input, the mains plug of the product shall be disconnected from the mains.
- The mains plug of the product should not be obstructed or should be easily accessed during intended use.
- No naked flame sources, such as lighted candles, shall be placed on the products.
- Keep this product away from direct sunlight, naked flames or other heat sources.
- Unplug the product from the power outlet during lightning storms or when unused for long periods of time.
- When you disconnect the power cord, always pull the plug instead of the cable.
- Only use attachments/accessories specified by the manufacturer.
- Where the mains plug or an appliance coupler is used as the disconnect device, the disconnect device shall remain readily operable.



Warning

- Never remove the casing of this product.
- Never place this product on other electrical equipment.



Note

- The type plate is located on the back of the apparatus.

Hearing safety

Listen at a moderate volume.

- Using earphones at a high volume can impair your hearing. This product can produce sounds in decibel ranges that may cause hearing loss for a normal person, even for exposure less than a minute. The higher decibel ranges are offered for those that may have already experienced some hearing loss.

- Sound can be deceiving. Over time your hearing 'comfort level' adapts to higher volumes of sound. So after prolonged listening, what sounds 'normal' can actually be loud and harmful to your hearing. To guard against this, set your volume to a safe level before your hearing adapts and leave it there.

To establish a safe volume level:

- Set your volume control at a low setting.
- Slowly increase the sound until you can hear it comfortably and clearly, without distortion.

Listen for reasonable periods of time:

- Prolonged exposure to sound, even at normally 'safe' levels, can also cause hearing loss.
- Be sure to use your equipment reasonably and take appropriate breaks.

Be sure to observe the following guidelines when using your earphones.

- Listen at reasonable volumes for reasonable periods of time.
- Be careful not to adjust the volume as your hearing adapts.
- Do not turn up the volume so high that you can't hear what's around you.
- You should use caution or temporarily discontinue use in potentially hazardous situations.

Important notes for users in the U.K.

This information applies only to products with a UK mains plug.

This product is fitted with an approved molded plug. If you replace the fuse, use one with:

- the ratings shown on the plug,
- a BS 1362 approval, and
- the ASTA approval mark.

Contact your dealer if you are not sure about what type of fuse to use.

Caution: To conform with the EMC directive (2004/108/EC), do not detach the plug from the power cord.

Notice

Any changes or modifications made to this device that are not expressly approved by Philips Consumer

Lifestyle may void the user's authority to operate the equipment.



This product complies with the radio interference requirements of the European Community.

Disposal of your old product



Your product is designed and manufactured with high quality materials and components, which can be recycled and reused.



When this crossed-out wheeled bin symbol is attached to a product it means that the product is covered by the European Directive 2002/96/EC. Please inform yourself about the local separate collection system for electrical and electronic products.

Please act according to your local rules and do not dispose of your old products with your normal household waste.

Correct disposal of your old product helps to prevent potential negative consequences for the environment and human health.

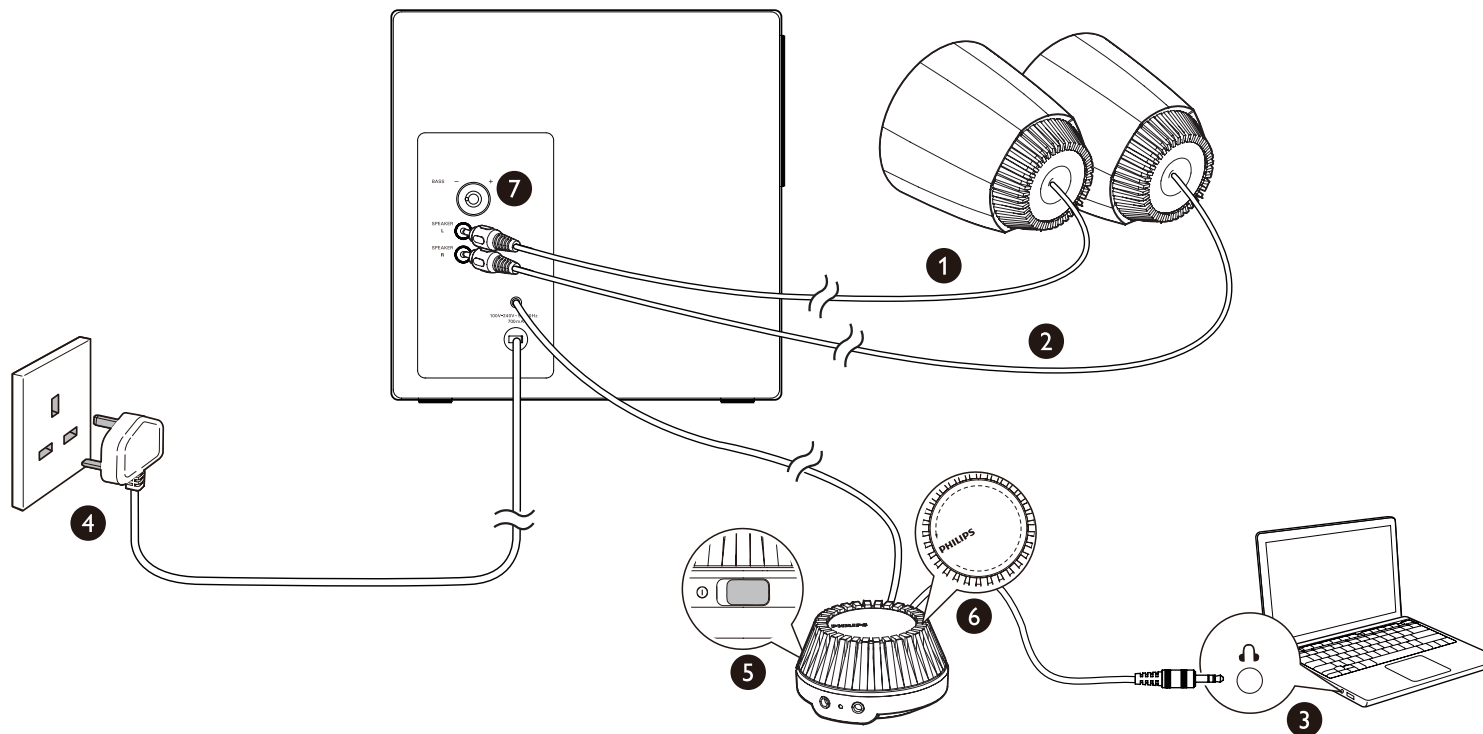


This is CLASS II apparatus with double insulation, and no protective earth provided.

Environmental information

All unnecessary packaging has been omitted. We have tried to make the packaging easy to separate into three materials: cardboard (box), polystyrene foam (buffer) and polyethylene (bags, protective foam sheet.)

Your system consists of materials which can be recycled and reused if disassembled by a specialized company. Please observe the local regulations regarding the disposal of packaging materials, exhausted batteries and old equipment.



Your multimedia speaker

Congratulations on your purchase and welcome to Philips!

To fully benefit from the support that Philips offers, register your product at www.philips.com/welcome.

Installation

- 1 Insert the left speaker plug into **SPEAKER L** socket (①).
- 2 Insert the right speaker plug into **SPEAKER R** socket (②).
- 3 Connect the audio input plug on remote control to the audio output socket of your computer (③).
- 4 Connect the AC plug to AC power socket (④).

Get started

Note

- Make sure that the multimedia speaker is installed properly before using.

- 1 Slide ① on the remote control to switch on the multimedia speaker (⑤).
↳ The indicator on the remote control (between the and the AUX sockets) lights up.
- 2 Adjust the volume by the remote control (⑥) or by the computer application.
- 3 Rotate **BASS** knob to adjust the bass (⑦).
- 4 After use, switch off the multimedia speaker and unplug.

Optional function

- **To listen through a headphone:**

Connect a headphone (not supplied) to the socket.

- To play music from an external audio device such as an MP3 player:

- 1 Connect an MP3 link cable (not supplied) to the **AUX** socket and the headphone socket on the device.
- 2 Play music from the device.

Product information

Specifications:

AC power input	100-240V ~ 50/60Hz, 700mA
Operation power consumption	<5W
Standby power consumption	<0.5W
Dimensions (W x H x D)	Subwoofer: 230 x 230 x 255 mm Speakers: 133 x 133 x 151 mm

System requirements

PC	Mac
Windows® 98SE, Windows® ME, Windows® 2000, Windows® XP, or Windows® Vista™, Windows 7	Mac OS9/OS® X, or later

Troubleshooting

To keep the warranty valid, never try to repair the system yourself.

If you encounter problems when using the product, check the following points before requesting service. If the problem remains unsolved, register your product and get support at www.philips.com/support.

No sound

- Make sure that the speakers are correctly installed.
- Make sure that the indicator on the remote control lights up.