

Wireless Music Center + Station

WACS57

Connect to your PC

What you can do with your PC Installer CD ?

- Connect your WAC5 Center to your PC or home network directly, via wired router or via wireless access point
- Manage your music collection via **Digital Media Manager (DMM)**, including:
 - Create and rename playlists/tracks, edit track information and transfer music files from PC to WAC5 Center
 - Update Gracenote® music recognition service for the latest disc information
 - Obtain the latest DMM software and firmware upgrades for WACS57
- Register products for upgrades

PC system requirements

- Windows 2000/XP (Home or Professional)
- Pentium III 300MHz processor or higher
- Ethernet network adapter
- CD-ROM drive
- Free hard disk space: 100MB for the software

What else you'll need ?



Supplied Ethernet cable
(straight cable)



Supplied PC Installer CD



Prepare for installation

On WACS57:

1 Check you have finished the Wi-Fi connection between **WAC5 Center** and **WAS700 Station** (See **Quick Start Guide**, Step A)

2 Check your **WAC5 Center** is switched on

On your PC or existing PC network:

1 Switch on the PC with administrator's privileges

2 Close all the software programs running on your PC

3 Disable firewalls

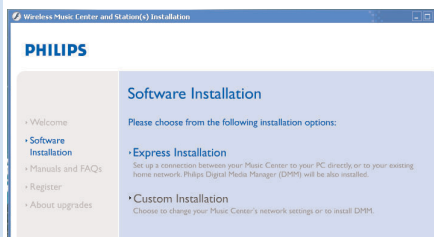
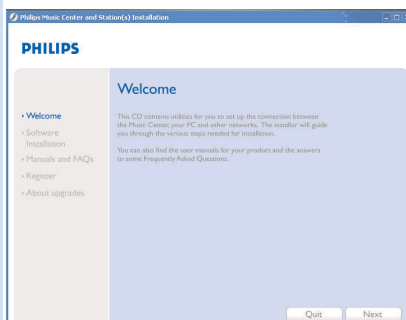
4 Insert the installer CD into your PC and select your desired language

5 Press **Accept** if you accept the terms on the license

6 On the **Welcome** page, press **Next** to enter the **Software Installation** page

Select Express Installation or Custom Installation

- For the first-time setup, select **Express Installation**. Both the PC connection and **DDM** will be installed.
- To change your installation option or re-install **DDM**, select **Custom Installation**.






Express Installation

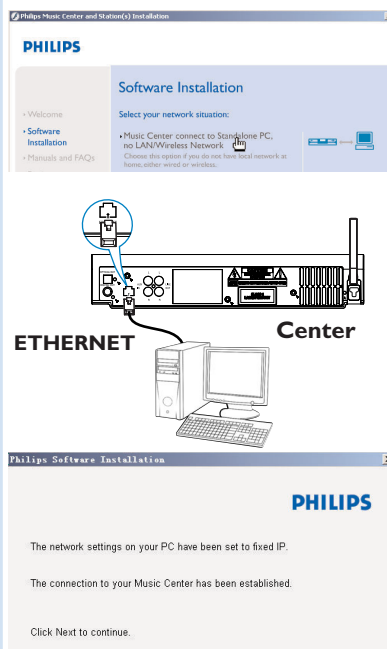
Express Installation provides **WAC5**'s standard PC connection. Select your installation option according to your existing home network. **For quicker and easier installation, select Option 1.**

Option 1:

Direct connection (recommended)

Choose this option if you do not have local network at home, either wired or wireless

- 1 Click to select **Music Center connect to Standalone PC, no LAN/Wireless Network**
- 2 When prompted by the installation wizard, connect the supplied Ethernet cable (straight cable) to the **ETHERNET** ports on Center and PC
- 3 Follow the screen instructions to finish the PC connection.
→ The screen shows: "The connection to your Music Center has been established"
- 4 Click **Next** to start **DMM** installation
→ The icon  appears on your computer desktop after **DMM** installation is finished



Tips:

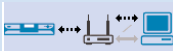
- **For Option 1 only:** If your PC is also connected to Internet via XDSL modem, exit DMM before starting Internet access.



Note:

- Option 2 and Option 3 are for users experienced in network installation.

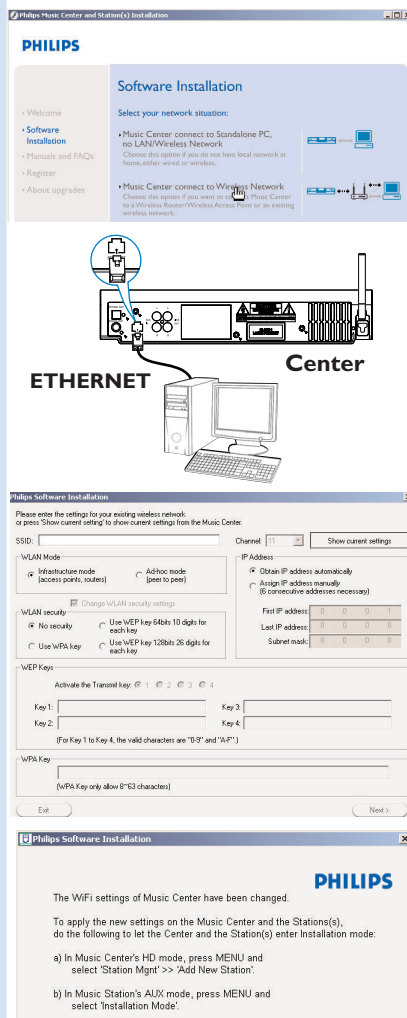
Option 2:



Wireless connection

Choose this option if you want to connect Music Center to a wireless Router/ wireless Access Point or an existing wireless network

- 1 Check the wireless router/access point is working properly. Write down its SSID and also the WEP or WPA key if it is enabled in the router/access point
- 2 Click to select **Music Center connect to Wireless Network**
- 3 When prompted by the installation wizard, connect the supplied Ethernet cable (straight cable) the **ETHERNET** ports on Center and PC
- 4 When the screen on the right appears,
 - a. Input the SSID you wrote down in the above **step 1**
 - b. In **WLAN Mode**, click **Infrastructure mode**
 - c. Input the WEP or WPA key you wrote down in the above **step 1**
- 5 Follow the screen instructions to finish the PC connection.
 - The screen shows: "The WiFi settings of Music Center have been changed."



Tips:

- It is strongly recommended that WEP key encryption be used for better network performance and security.
- In Infrastructure mode, Channel is assigned automatically by the router/access point.
- To change Channel, input the SSID of your wireless network and select **Ad-hoc mode** in the above 4a and 4b.



6 To apply new settings on WACS57, you need to let both Center and Station enter **Installation Mode**.

On Center:

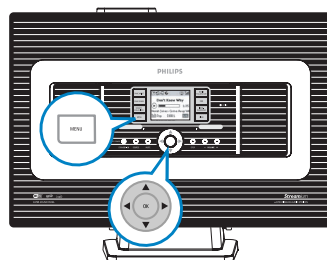
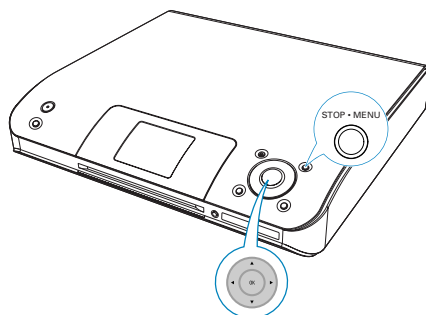
- Select **HD** source
- Press and hold **STOP • MENU** on the set
- Use the navigation controls ▲ or ▼ and ► to enter **Station Mgmt** menu
- In **Station Mgmt** menu, use the navigation controls ▲ or ▼ and ► to select **Add New Station**


On Station:

- Select **AUX**
- Press **MENU**
- Use the navigation controls ▲ or ▼ and ► to select **Installation Mode**

On Center:

Press **STOP • MENU/■** to exit **Installation Mode** when Center has found all your stations



7 Click **Next** to start **DMM** installation
→ The icon  appears on your computer desktop after **DMM** installation is finished

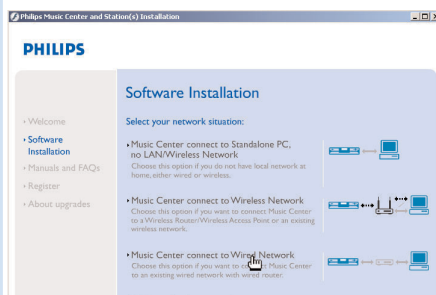
8 Disconnect the supplied Ethernet cable from your PC and Center; and then, connect your PC to the wireless router/access point, if necessary

Option 3:


Wired connection

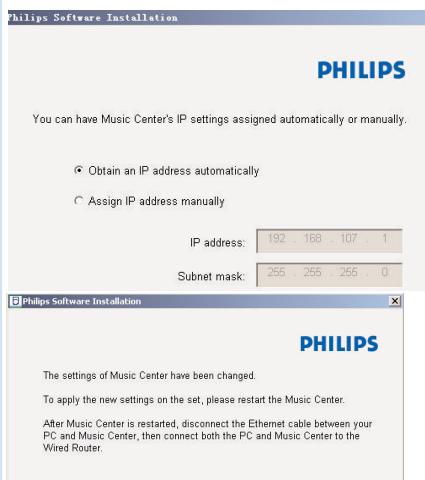
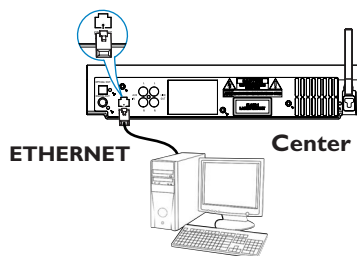


Choose this option if you want to connect Music Center to an existing wired network with wired router





- 1 Check the wired router is working properly and enable its DHCP
- 2 Click to select **Music Center connect to Wired Network**
- 3 When prompted by the installation wizard, connect the supplied Ethernet cable (straight cable) to the **ETHERNET** ports on Center and PC
- 4 When the screen on the right appears, select **"Obtain an IP address automatically"**
- 5 Follow the screen instructions to finish the PC connection.
→ The screen shows: "The settings of Music Center have been changed....."
- 6 To apply new settings, you need to power off WAC5 Center, and then power it on again
- 7 Click **Next** to start **DMM** installation
→ The icon  appears on your computer desktop after **DMM** installation is finished
- 8 Disconnect the supplied Ethernet cable from your PC and Center, and then, connect your PC and Center to the wired router



Notes:

- **When using a wireless router, keep it at least 0.5 meter away from WAC5 Center.**
- **If you are Windows 2000 user, check Service Pack 2 is installed.**
- **Select PC's network adapter that connects Center via the supplied Ethernet cable, if you have installed more than one network adapter on your PC.**
- **If you add/remove a network adapter to/from your PC, you need to re-install the PC connection. Follow the steps under Custom Installation: Change Network Settings.**
- **In Option 3: Wired connection, avoid assigning the IP address manually as: IP address: 169.254.xxx.yyy; Subnet mask: 255.255.0.0. Such an IP address will cause conflict with the WiFi network of WACS57 Center and Station, resulting in Center's disabled Ethernet port. To restore the disabled Ethernet port, restore your WAC5 Center to its default settings (see Chapter Reset in the User Manual).**

Philips Software Installation


More than one network adapter on your PC have been found. Please select the Wired network adapter where you have the Music Center connected to the PC.

Number	Name	Adapter
1	Local Area Connection	3Com 3C920 Integrated Fast Ethernet Controller (3C905C-TX Com
2	Local Area Connection 2	VIA Compatible Fast Ethernet Adapter



Digital Media Manager (DMM)

Digital Media Manager (DMM) allows your PC to work with WAC5 Center:

- 1 Disable firewalls
- 2 Double click  on your computer desktop to launch DMM
- 3 The first time you launch DMM, specify your music folders on PC
 - Music files in the folders are imported into DMM
 - Next time you launch DMM, DMM will start lookup in the folders and automatically update its music collection on PC
- 4 To learn more about DMM, click **Help → Digital**

Media Manager Help

IMPORTANT!

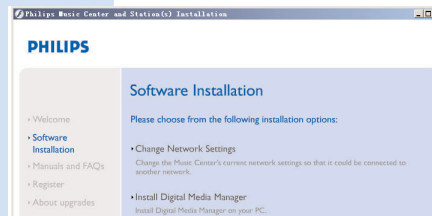
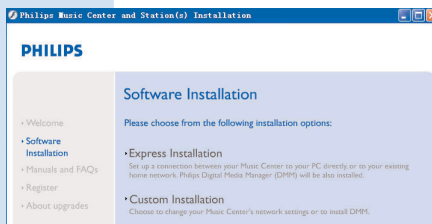
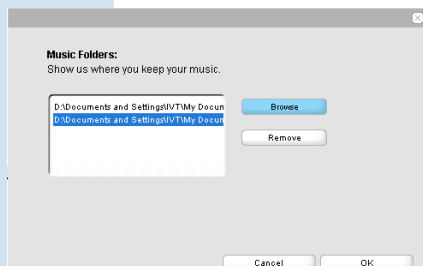
– If power failure occurs after you have just transferred music from PC to Center, you will lose all those transferred music. Switch Center to ECO POWER (power-saving mode) before removing its power plug from the wall outlet.

Custom Installation

Custom Installation allows you to separately change the install option you selected in **Express Installation** or re-install **DMM**.

Change Network Settings

- 1 Restore your WAC5 Center to its default settings (see Chapter **Reset** in the **User Manual**)
- 2 Select your new installation option
- 3 Follow the steps under the above **Option 1, Option 2** or **Option 3** of **Express Installation**



Glossary

Access point: communication hub for the connection between a wireless device and a wired LAN.

Ad-hoc mode: a networking framework where devices communicate with each other directly, without access point.

DHCP: stands for **D**ynamic **H**ost **C**onfiguration **P**rotocol. It is a protocol for assigning dynamic IP addresses to devices on a network.

Infrastructure mode: a networking framework where devices communicate with each other via an access point

IP address: computer or device identifier on a TCP/IP network

SSID: stands for **S**ervice **S**et **I**Dentifier. The same SSID must be used for all the access points and all the devices if you try to connect them to a specific WLAN.

Subnet Mask: It serves to decide what subnet an IP address belongs to

WEP: stands for **W**ired **E**quivalent **P**rivacy. It is a security protocol for wireless local area network

WLAN: stands for **W**ireless **L**ocal **A**rea **N**etwork. In such a network, high-frequency radio waves are used for communication

WPA: stands for **W**i-Fi **P**rotected **A**ccess. It is a Wi-Fi standard aimed to improve WEP's security features. It works with an existing WEP-enabled Wi-Fi products.

Gracenote and CDDB are registered trademarks of Gracenote. The Gracenote logo and logotype, and the "Powered by Gracenote" logo are trademarks of Gracenote.



Need help?

Online

Go to www.philips.com/support



2006 © Koninklijke Philips Electronics N.V.
All rights reserved.
3141 075 21181 
www.philips.com



Be responsible
Respect copyrights