



Philips
Headphones

8.6mm drivers/closed-back
In-ear

SHE3700WT

Big beats, pumping bass

Compact design with vacuum metalized protection

Ultra small, big bass Philips MyJam Beamers in-ear headphones feature oval tube inserts for comfort and vacuum metalized coating for sleek looks with extra protection.

Always ready to go

- Reinforced cable relief enhances durability and connectivity

Revel in quality sound

- Big bass and clear sound through efficient drivers
- A perfect in-ear seal blocks out external noise

Listen for longer

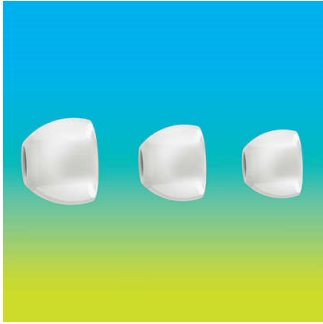
- Oval sound tube insert provides an ergonomic comfort fit
- 3 interchangeable rubber ear caps offer an optimal fit
- Shiny, colorful coating looks sleek and also protects

PHILIPS

Headphones
8.6mm drivers/closed-back In-ear

Highlights

3 sizes of ear caps



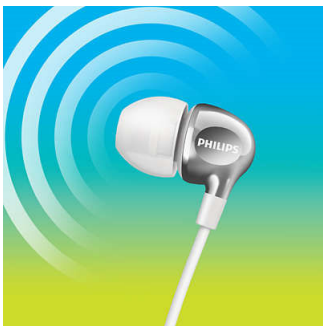
Ear caps come in a choice of 3 sizes - small, medium and large - for a personalized and perfect fit

Colorful shiny coating



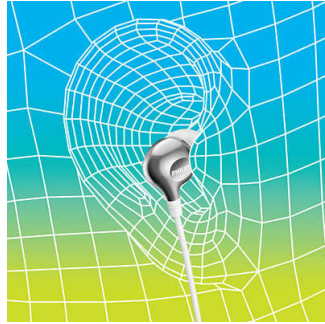
A high quality, glossy and colorful coating creates a sleek look while adding an extra protective surface.

Efficient drivers



Philips Vibes in-ear headphones house efficient drivers inside a compact design. They fit perfectly while pumping out clear sound and booming bass.

Oval sound tube



An oval sound tube insert provides ergonomic comfort to fit the true shape of the ear.

Perfect in-ear fit



Ultra small earphones fit perfectly inside the ear, creating a seal that blocks out external noise.

Reinforced cable relief

To extend the life of your headphones, a soft rubber relief between them and the cable protects the connection from damage through repeated bending.

SHE3700WT/27

Specifications

Sound

- Acoustic system: Closed
- Diaphragm: PET
- Type: Dynamic
- Voice coil: copper
- Frequency response: 11- 22 000 Hz
- Speaker diameter: 8.6 mm
- Sensitivity: 105 dB
- Maximum power input: 20 mW
- Impedance: 16 ohm

Connectivity

- Type of cable: copper
- Cable Connection: two-parallel, symmetric
- Finishing of connector: chrome-plated
- Cable length: 1.2 m
- Connector: 3.5 mm

Outer Carton

- Length: 37.4 cm
- Number of consumer packagings: 24
- Width: 17.4 cm
- Gross weight: 1.136 kg
- Height: 13.9 cm
- GTIN: 1 08 89446 00609 1
- Nett weight: 0.288 kg
- Tare weight: 0.848 kg

Inner Carton

- Length: 18.1 cm
- Number of consumer packagings: 3
- Width: 8.1 cm
- Height: 6 cm
- Nett weight: 0.036 kg
- Gross weight: 0.125 kg
- Tare weight: 0.089 kg
- GTIN: 2 08 89446 00609 8

Packaging dimensions

- Height: 17.3 cm
- Packaging type: Blister
- Type of shelf placement: Both
- Width: 5 cm
- Depth: 2.7 cm
- Number of products included: 1
- Gross weight: 0.026 kg
- Nett weight: 0.012 kg
- Tare weight: 0.014 kg
- UPC: 8 89446 00609 4

Accessories

- Eartips: 3 sizes S, M, L

Design

- Color: White



Issue date 2024-03-08

Version: 5.1.3

UPC: 8 89446 00609 4

© 2024 Koninklijke Philips N.V.
All Rights reserved.

Specifications are subject to change without notice.
Trademarks are the property of Koninklijke Philips N.V.
or their respective owners.

www.philips.com