

Always there to help you

Register your product and get support at
www.philips.com/welcome



HTS5543



User manual

PHILIPS

Contents

| | | | |
|-------------------------|---|---------------------------------|----|
| 1 Important | 3 | 7 Product specifications | 23 |
| Safety | 3 | | |
| Care for your product | 4 | 8 Troubleshooting | 25 |
| Care of the environment | 4 | | |
| Help and support | 4 | 9 Notice | 27 |

| | | | |
|----------------------------|---|-----------------|-----------|
| 2 Your home theater | 5 | Copyright | 27 |
| Main unit | 5 | Trademarks | 27 |
| Connectors | 5 | | |
| Remote control | 6 | 10 Index | 28 |

| | | | |
|---|----|--|--|
| 3 Connect and set up | 8 | | |
| Connect speakers | 8 | | |
| Connect to TV | 9 | | |
| Connect audio from TV and other devices | 11 | | |
| Set up speakers | 11 | | |
| Set up EasyLink (HDMI-CEC control) | 12 | | |

| | | | |
|-----------------------------------|----|--|--|
| 4 Use your home theater | 14 | | |
| Discs | 14 | | |
| Data files | 14 | | |
| USB storage devices | 15 | | |
| Audio, video, and picture options | 16 | | |
| Radio | 17 | | |
| MP3 player | 17 | | |
| Create MP3 files | 18 | | |
| Karaoke | 18 | | |
| Choose sound | 19 | | |

| | | | |
|----------------------------|----|--|--|
| 5 Change settings | 20 | | |
| Language settings | 20 | | |
| Picture and video settings | 20 | | |
| Audio settings | 20 | | |
| Parental control settings | 21 | | |
| Display settings | 21 | | |
| Energy saving settings | 21 | | |
| Restore default settings | 21 | | |

| | | | |
|-----------------------------|----|--|--|
| 6 Update software | 22 | | |
| Check software version | 22 | | |
| Update software through USB | 22 | | |

1 Important

Read and understand all instructions before you use your product. If damage is caused by failure to follow instructions, the warranty does not apply.

Safety

Risk of electric shock or fire!

- Never expose the product and accessories to rain or water; Never place liquid containers, such as vases, near the product. If liquids are spilt on or into the product, disconnect it from the power outlet immediately. Contact Philips Consumer Care to have the product checked before use.
- Never place the product and accessories near naked flames or other heat sources, including direct sunlight.
- Never insert objects into the ventilation slots or other openings on the product.
- Where the mains plug or an appliance coupler is used as the disconnect device, the disconnect device shall remain readily operable.
- Disconnect the product from the power outlet before lightning storms.
- When you disconnect the power cord, always pull the plug, never the cable.

Risk of short circuit or fire!

- Before you connect the product to the power outlet, ensure that the power voltage matches the value printed on the back or bottom of the product. Never connect the product to the power outlet if the voltage is different.

Risk of injury or damage to the home theater!

- For wall-mountable products, use only the supplied wall mount bracket. Secure the wall mount to a wall that can support the combined weight of the product and the wall mount. Koninklijke Philips Electronics N.V. bears no responsibility for improper

wall mounting that results in accident, injury or damage.

- For speakers with stands, use only the supplied stands. Secure the stands to the speakers tightly. Place the assembled stands on flat, level surfaces that can support the combined weight of the speaker and stand.
- Never place the product or any objects on power cords or on other electrical equipment.
- If the product is transported in temperatures below 5°C, unpack the product and wait until its temperature matches room temperature before connecting it to the power outlet.
- Visible and invisible laser radiation when open. Avoid exposure to beam.
- Do not touch the disc optical lens inside the disc compartment.
- Parts of this product can be made of glass. Handle with care to avoid injury and damage.

Risk of overheating!

- Never install this product in a confined space. Always leave a space of at least four inches around the product for ventilation. Ensure curtains or other objects never cover the ventilation slots on the product.

Risk of contamination!

- Do not mix batteries (old and new or carbon and alkaline, etc.).
- Danger of explosion if batteries are incorrectly replaced. Replace only with the same or equivalent type.
- Remove batteries if they are exhausted or if the remote control is not to be used for a long time.
- Batteries contain chemical substances, they should be disposed of properly.

Risk of swallowing batteries!

- The product/remote control may contain a coin/button type battery, which can be swallowed. Keep the battery out of reach of children at all times! If swallowed, the battery can cause serious injury or death. Severe internal burns can occur within two hours of ingestion.

- If you suspect that a battery has been swallowed or placed inside any part of the body, seek immediate medical attention.
- When you change the batteries, always keep all new and used batteries out of reach of children. Ensure that the battery compartment is completely secure after you replace the battery.
- If the battery compartment cannot be completely secured, discontinue use of the product. Keep out of reach of children and contact the manufacturer.

Care for your product

- Do not insert any objects other than discs into the disc compartment.
- Do not insert warped or cracked discs into the disc compartment.
- Remove discs from the disc compartment if you are not using the product for an extended period of time.
- Use only microfiber cloth to clean the product.

Care of the environment



Your product is designed and manufactured with high quality materials and components, which can be recycled and reused.



When this crossed-out wheeled bin symbol is attached to a product it means that the product is covered by the European Directive 2002/96/EC. Please inform yourself about the local separate collection system for electrical and electronic products.

Please act according to your local rules and do not dispose of your old products with your normal household waste.

Correct disposal of your old product helps to prevent potential negative consequences for the environment and human health.



Your product contains batteries covered by the European Directive 2006/66/EC, which cannot be disposed with normal household waste. Please inform yourself about the local rules on separate collection of batteries because correct disposal helps to prevent negative consequences for the environmental and human health.

Help and support

Philips provides extensive online support. Visit our website at www.philips.com/support to:

- download the complete user manual
- print the quick start guide
- watch video tutorials (available only for selected models)
- find answers to frequently answered questions (FAQs)
- email us a question
- chat with our support representative.

Follow the instructions on the website to select your language, and then enter your product model number:

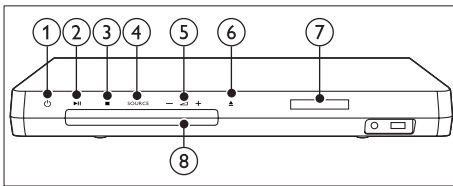
Alternatively, you can contact Philips Consumer Care in your country. Before you contact Philips, note down the model number and serial number of your product. You can find this information on the back or bottom of your product.

2 Your home theater

Congratulations on your purchase, and welcome to Philips! To fully benefit from the support that Philips offers, register your product at www.philips.com/welcome.

Main unit

This section includes an overview of the main unit.



- ① **⏻ (Standby-On)**
Switch the home theater on or to standby.
- ② **▶⏸ (Play/Pause)**
Start, pause or resume play.
- ③ **■ (Stop)**
 - Stop play.
 - In radio mode, press and hold to erase the current preset radio stations.
- ④ **SOURCE**
Select an audio or video source for the home theater.
- ⑤ **+/-**
Increase or decrease volume.
- ⑥ **⏏ (Open/Close)**

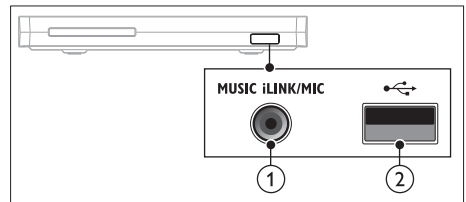
Open or close the disc compartment, or eject the disc.

- ⑦ **Display panel**
- ⑧ **Disc compartment**

Connectors

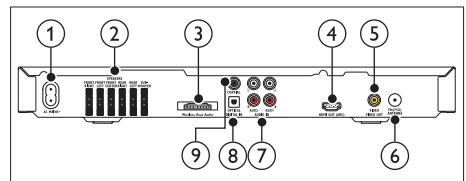
This section includes an overview of the connectors available on your home theater.

Front connectors



- ① **MUSIC iLINK/MIC**
Audio input from an MP3 player or a microphone.
- ② **↔ (USB)**
Audio, video or picture input from a USB storage device.

Rear connectors

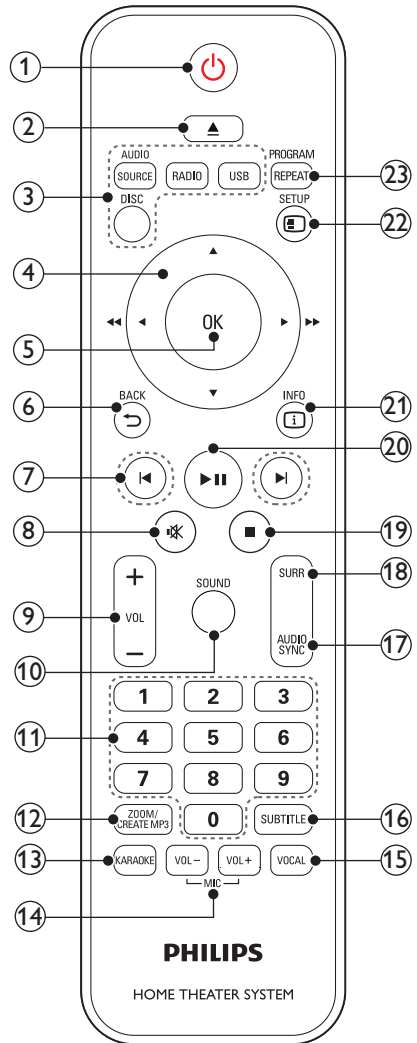


- ① **AC MAINS**
Connect to the power supply.
- ② **SPEAKERS**
Connect to the supplied speakers and subwoofer.
- ③ **Wireless Rear Audio**
Connect to a Philips wireless module.
(Model: Philips RWSS5512, sold separately)

- ④ **HDMI OUT (ARC)**
Connect to the HDMI input on the TV.
- ⑤ **VIDEO OUT-VIDEO**
Connect to the composite video input on the TV.
- ⑥ **ANTENNA FM 75 Ω**
Signal input from an antenna, cable or satellite.
- ⑦ **AUDIO IN-AUX 1/AUX 2**
Connect to an analog audio output on the TV or an analog device.
- ⑧ **DIGITAL IN-OPTICAL**
Connect to an optical audio output on the TV or a digital device.
- ⑨ **DIGITAL IN-COAXIAL**
Connect to a coaxial audio output on the TV or a digital device.

Remote control

This section includes an overview of the remote control.



- ① **⏻ (Standby-On)**
 - Switch the home theater on or to standby.
 - When EasyLink is enabled, press and hold for at least three seconds to switch all connected HDMI CEC compliant devices to standby.
- ② **⏮ (Open/Close)**
Open or close the disc compartment, or eject the disc.

- ③ **Source buttons**
- **DISC:** Switch to disc source. Access or exit the disc menu when you play a disc.
 - **AUDIO SOURCE:** Select an audio input source.
 - **RADIO:** Switch to FM radio.
 - **USB:** Switch to USB storage device.
- ④ **Navigation buttons**
- Navigate menus.
 - In video mode, press left or right to fast backward or fast forward; press up or down to slow backward or slow forward.
 - In radio mode, press left or right to search a radio station; press up or down to fine tune a radio frequency.
- ⑤ **OK**
Confirm an entry or selection.
- ⑥ **↶ BACK**
Return to a previous menu screen.
- ⑦ **◀ / ▶ (Previous/Next)**
- Skip to the previous or next track, chapter or file.
 - In radio mode, select a preset radio station.
- ⑧ **🔇 (Mute)**
Mute or restore volume.
- ⑨ **VOL +/-**
Increase or decrease volume.
- ⑩ **SOUND**
Select a sound mode.
- ⑪ **Numeric buttons**
Select an item to play.
- ⑫ **CREATE MP3/ZOOM**
- Access the create MP3 menu.
 - Zoom into a video scene or picture. Press the **Navigation buttons** (left/right) to select a zoom factor.
- ⑬ **KARAOKE**
Access or exit the karaoke options.
- ⑭ **MICVOL +/-**
Increase or decrease the microphone volume.
- ⑮ **VOCAL**
Turn the vocals on or off.
- ⑯ **SUBTITLE**
Select subtitle language for video.
- ⑰ **AUDIO SYNC**
- Select an audio language or channel.
 - Press and hold to access audio delay setting, and then press the **+/-** or **Navigation buttons** to delay the audio to match the video.
- ⑱ **SURR**
Select surround sound or stereo sound.
- ⑲ **■ (Stop)**
- Stop play.
 - In radio mode, press and hold to erase the current preset radio stations.
- ⑳ **▶ || (Play/Pause)**
Start, pause or resume play.
- ㉑ **ℹ INFO**
Access more play options while playing a disc or a USB storage device.
- ㉒ **⊞ SETUP**
Access or exit the setup menu.
- ㉓ **REPEAT/PROGRAM**
- Select or turn off repeat mode.
 - In radio mode, press once to access program mode, and press again to store the radio station.
 - In radio mode, press and hold for three seconds to reinstall the radio stations.

3 Connect and set up

This section helps you connect your home theater to a TV and other devices, and then set it up.

For information about the basic connections of your home theater and accessories, see the quick start guide. For a comprehensive interactive guide, visit www.connectivityguide.philips.com.

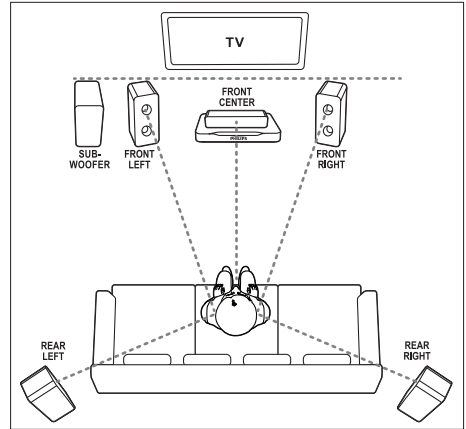
Note

- For identification and supply ratings, see the type plate at the back or bottom of the product.
- Before you make or change any connections, make sure that all devices are disconnected from the power outlet.

Connect speakers

The speaker cables are color-coded for easy connection. To connect a speaker to your home theater, match the color on the speaker cable to the color on the connector.

Speaker position plays a critical role in setting up a surround sound effect. For best effect, position all the speakers towards the seating position and place them close to your ear level (seated).



Note

- Surround sound depends on factors such as room shape and size, type of wall and ceiling, windows and reflective surfaces, and speaker acoustics. Experiment with the speaker positions to find the optimum setting for you.

Follow these general guidelines for speakers placement.

- 1 Seating position:**
This is the center of your listening area.
- 2 FRONT CENTER (front center) speaker:**
Place the center speaker directly in front of the seating position, either above or below your TV.
- 3 FRONT LEFT (front left) and FRONT RIGHT (front right) speakers:**
Place the left and right speakers in the front, and at equal distance from the center speaker. Make sure that the left, right, and the center speakers are at equal distance from your seating position.
- 4 REAR LEFT (rear left) and REAR RIGHT (rear right) speakers:**
Place the rear surround speakers to the left and right side of your seating position, either in line with it or slightly behind it.
- 5 SUBWOOFER (subwoofer):**

Place the subwoofer at least one meter to the left or right of the TV. Leave about 10-centimeter clearance from the wall.

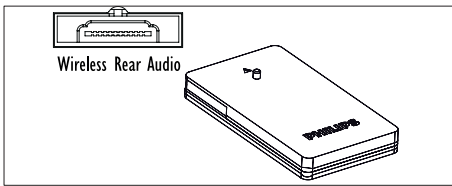
Make your rear speakers wireless

Connect the rear speakers to your home theater wirelessly using a wireless module accessory. For details, see the wireless module user manual.

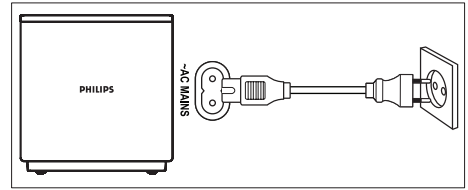
What you need

- A Philips wireless module. (Model: Philips RWSS5512, sold separately)

- 1 Connect the wireless transmitter to the **Wireless Rear Audio** connector on your home theater.



- 2 Connect the rear speakers to the wireless receiver.
- 3 Connect the wireless receiver to the power supply.



Connect to TV

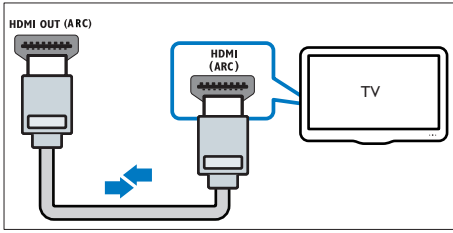
Connect your home theater to a TV to watch videos. You can listen to the TV audio through your home theater speakers. Use the best quality connection available on your home theater and TV.

Option 1: Connect to TV through HDMI (ARC)

Best quality video

Your home theater supports HDMI version 1.4 - Audio Return Channel (ARC). If your TV is HDMI ARC compliant, you can hear the TV audio through your home theater by using a single HDMI cable.

- 1 Using a High Speed HDMI cable, connect the **HDMI OUT (ARC)** connector on your home theater to the **HDMI ARC** connector on the TV.
 - The **HDMI ARC** connector on the TV might be labeled differently. For details, see the TV user manual.
- 2 On your TV, turn on HDMI-CEC operations. For details, see the TV user manual.
 - If you cannot hear the TV audio through your home theater, set up the audio manually (see 'Set up the audio' on page 13).



Option 2: Connect to TV through standard HDMI

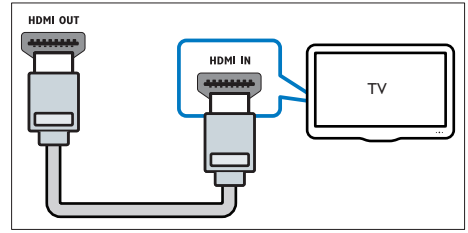
Best quality video

If your TV is not HDMI ARC compliant, connect your home theater to the TV through a standard HDMI connection.

- 1 Using a High Speed HDMI cable, connect the **HDMI OUT (ARC)** connector on your home theater to the **HDMI** connector on the TV.
- 2 Connect an audio cable to hear the TV audio through your home theater (see 'Connect audio from TV and other devices' on page 11).
- 3 On your TV, turn on HDMI-CEC operations. For details, see the TV user manual.
 - If you cannot hear the TV audio through your home theater, set up the audio manually (see 'Set up the audio' on page 13).

Note

- If your TV has a DVI connector, you can use an HDMI/DVI adapter to connect to TV. However, some of the features may not be available.

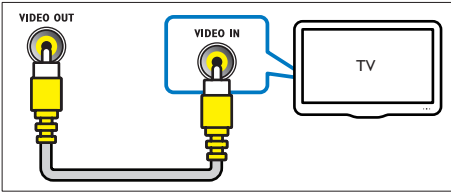


Option 3: Connect to the TV through composite video

Basic quality video

If your TV does not have HDMI connectors, use a composite video connection. A composite connection does not support high-definition video.

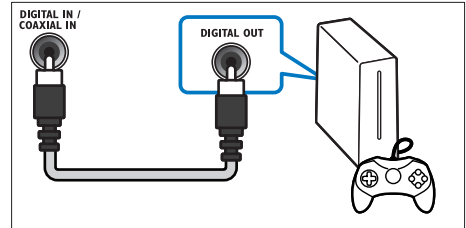
- 1 Using a composite video cable, connect the **VIDEO** connector on your home theater to the **VIDEO IN** connector on the TV.
 - The composite video connector might be labeled **AV IN**, **COMPOSITE**, or **BASEBAND**.
- 2 Connect an audio cable to hear the TV audio through your home theater (see 'Connect audio from TV and other devices' on page 11).
- 3 When you watch TV programs, press **SOURCE** on your home theater repeatedly to select the correct audio input.
- 4 When you watch videos, switch your TV to the correct video input. For details, see the TV user manual.



Option 2: Connect audio through a digital coaxial cable

Good quality audio

- Using a coaxial cable, connect the **COAXIAL** connector on your home theater to the **COAXIAL/DIGITAL OUT** connector on the TV or other device.
 - The digital coaxial connector might be labeled **DIGITAL AUDIO OUT**.



Connect audio from TV and other devices

Play audio from TV or other devices through your home theater speakers. Use the best quality connection available on your TV, home theater, and other devices.

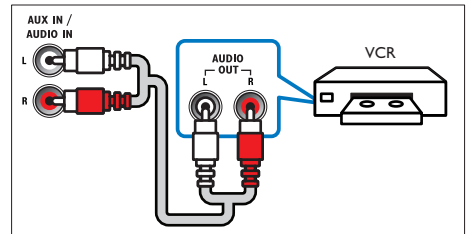
Note

- The audio connections in this user manual are only recommendations. You can use other connections too.
- When your home theater and TV are connected through **HDMI ARC**, an audio connection is not required.

Option 3: Connect audio through analog audio cables

Basic quality audio

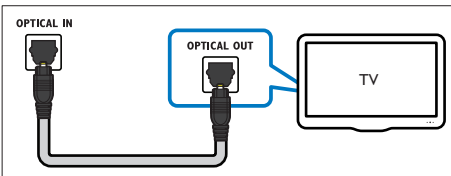
- Using an analog cable, connect the **AUX** connectors on your home theater to the **AUDIO OUT** connectors on the TV or other device.



Option 1: Connect audio through a digital optical cable

Best quality audio

- Using an optical cable, connect the **OPTICAL** connector on your home theater to the **OPTICAL OUT** connector on the TV or other device.
 - The digital optical connector might be labeled **SPDIF** or **SPDIF OUT**.



Set up speakers

Set up the speakers manually to experience customized surround sound.

Before you start

Make the necessary connections described in the quick start guide, and then switch the TV to the correct source for your home theater:

- 1 Press **⏏** **SETUP** on your home theater remote control.
- 2 Select **[Audio Setup]** and then press **OK**.
- 3 Press the **Navigation buttons** and **OK** to select and change:
 - **[Speakers Volume]:** Set the volume level of each speaker.
 - **[Speakers Delay]:** Set the delay time for speakers which are placed closer to the seating position in order to obtain equal audio transmission from all the speakers.

Set up EasyLink (HDMI-CEC control)

This home theater supports Philips EasyLink, which uses the HDMI-CEC (Consumer Electronics Control) protocol. EasyLink-compliant devices that are connected through HDMI can be controlled by a single remote control.

Note

- Depending on the manufacturer, HDMI-CEC is known by many names. For information on your device, see the user manual of the device.
- Philips does not guarantee 100% interoperability with all HDMI-CEC devices.

Before you start

- Connect your home theater to the HDMI-CEC compliant device through HDMI connection.
- Make the necessary connections described in the quick start guide, and then switch the TV to the correct source for your home theater.

Enable EasyLink

- 1 Press **⏏** **SETUP**.
- 2 Select **[Video Setup]** and then press **OK**.
- 3 Select **[HDMI Setup]** > **[EasyLink Setup]** > **[EasyLink]** > **[On]**.
- 4 On your TV and other connected devices, turn on HDMI-CEC control. For details, see the user manual of the TV or other devices.
 - On your TV, set the audio output to 'Amplifier' (instead of TV speakers). For details, see the TV user manual.

EasyLink controls

With EasyLink, you can control your home theater, TV, and other connected HDMI-CEC compliant devices with a single remote control.

- **[One Touch Play]** (One-touch play): When a video disc is in the disc compartment, press **▶||** to wake up the TV from standby, and then play a disc.
- **[One Touch Standby]** (One-touch standby): If one-touch standby is enabled, your home theater can switch to standby with the remote control of the TV or other HDMI-CEC devices.
- **[System Audio Control]** (System audio control): If system audio control is enabled, the audio of the connected device is output through your home theater speakers automatically when you play the device.
- **[Audio Input Mapping]** (Audio input mapping): If system audio control does not work, map the connected device to the correct audio input connector on your home theater (see 'Set up the audio' on page 13).

Note

- To change the EasyLink control settings, press **⏏** **SETUP**, select **[Video Setup]** > **[HDMI Setup]** > **[EasyLink Setup]**.

Set up the audio

If you cannot hear the audio output of a connected device through your home theater speakers, check that you have enabled Easylink on all the devices (see 'Enable EasyLink' on page 12). Then, set up the EasyLink audio control.

- 1** Press **⏏** **SETUP**.
- 2** Select **[Video Setup]** and then press **OK**.
- 3** Select **[HDMI Setup] > [EasyLink Setup] > [System Audio Control] > [On]**.
 - To play the audio from the TV speakers, select **[Off]**, and then skip the following steps.
- 4** Select **[EasyLink Setup] > [Audio Input Mapping]**.
- 5** Follow the onscreen instructions to map the connected device to the audio inputs on your home theater:
 - If you connect your home theater to the TV through an HDMI ARC connection, make sure that the TV audio is mapped to the ARC input on your home theater.

4 Use your home theater

This section helps you use the home theater to play media from a wide range of sources.

Before you start

- Make the necessary connections described in the quick start guide and the user manual.
- Switch the TV to the correct source for your home theater (for example, HDMI, AV IN).

Discs

Your home theater can play DVDs, VCDs, and CDs. It can also play discs that you've made at home, such as CD-R discs of photos and music.

- 1 Insert a disc into the home theater.
- 2 If the disc does not play automatically, press **DISC**.
- 3 Use the remote control to control play.

Play buttons

| Button | Action |
|---------------------------|---|
| Navigation buttons | Navigate menus. Up/Down: <ul style="list-style-type: none">• Video: Slow forward or slow backward (VCD/SVCD can only slow forward).• Picture: Rotate the picture clockwise or counter-clockwise. Left/Right: <ul style="list-style-type: none">• Video: Fast backward or fast forward. Press repeatedly to change the search speed.• Picture: Flip the picture vertically or horizontally. |
| OK | Confirm an entry or selection. |

| | |
|-------------------------|---|
| ▶ (Play/Pause) | Start, pause or resume play. |
| ■ | Stop play. |
| ◀ / ▶ | Skip to the previous or next track, chapter or file. |
| SUBTITLE | Select subtitle language for video. |
| DISC | Access or exit the disc menu. |
| AUDIO SYNC | Select an audio language or channel. |
| ZOOM | Zoom into a video scene or picture. |
| REPEAT | Select or turn off repeat mode. |
| ☑ INFO | Access the advanced options when you play your audio, video, or media files (see 'Audio, video, and picture options' on page 16). |

Synchronize picture and sound

If the audio and video are not synchronized, delay the audio to match the video.

- 1 While playing video, press and hold **AUDIO SYNC**.
↳ Audio sync menu is displayed.
- 2 Press the **+/-** or **Navigation** buttons to synchronize the audio with the video, and then press **OK**.

Note

- Picture and sound can be synchronized through the setup menu of your home theater; press **☑ SETUP**, select **[Audio Setup] > [Audio Sync]**.

Data files

Your home theater can play pictures, audio and video files contained in a disc or a USB storage device. Before you play a file, check that the file format is supported by your home theater (see 'File formats' on page 23).

- 1 Play the files from a disc or USB storage device.
- 2 To stop play, press **■**.
 - To resume the video from where you stopped, press **▶||**.

Note

- To play DivX DRM protected files, connect your home theater to a TV through an HDMI cable.

Subtitles

If your video has subtitles in multiple languages, select a subtitle language.

Note

- Make sure that the subtitle file has the exact same name as the video file. For example, if the video file is named 'movie.avi', name the subtitle file as 'movie.srt' or 'movie.sub'.
- Your home theater supports the following file formats: .srt, .sub, .txt, .ssa, .ass, .smi, and .sami. If the subtitles do not appear correctly, change the character set.

- 1 While playing video, press **SUBTITLE** to select a language.
- 2 For DivX video, if the subtitles do not appear correctly, continue the following steps to change the character set.
- 3 Press **⏏** **SETUP**.
- 4 Select **[Preference Setup]** and then press **OK**.
- 5 Select **[DivX Subtitle]** and then select a character set that supports the subtitle.

| Character Set | Language |
|-------------------|--|
| [Standard] | English, Albanian, Danish, Dutch, Finnish, French, Gaelic, German, Italian, Kurdish (Latin), Norwegian, Portuguese, Spanish, Swedish and Turkish |

| | |
|-------------------------|---|
| [Central Europe] | Albanian, Croat, Czech, Dutch, English, German, Hungarian, Irish, Polish, Romanian, Slovak, Slovene and Sorbian |
| [Cyrillic] | Bulgarian, Belorussian, English, Macedonian, Moldavian, Russian, Serbian and Ukrainian |
| [Greek] | Greek |
| [Hebrew] | Hebrew |
| [Chinese(Simp)] | Simplified Chinese |

VOD code for DivX

Before you purchase DivX videos and play them on your home theater, register the home theater on www.divx.com using the DivX VOD code.

- 1 Press **⏏** **SETUP**.
- 2 Select **[General Setup]** and then press **OK**.
- 3 Select **[DivX(R) VOD Code]** and then press **OK**.
- 4 Press **OK** again.
 - ↳ The DivX VOD registration code for your home theater is displayed.

USB storage devices


Enjoy pictures, audio, and video stored on a USB storage device such as an MP4 player or digital camera.

What you need

- A USB storage device that is formatted for FAT file system, and complies with the Mass Storage Class.

Note

- If you use a USB extension cable, USB HUB or USB multi-reader; the USB storage device may not be recognized.
- You can connect to a digital camera if they can play the files without using a special computer program.


- 1 Connect a USB storage device to the  (USB) connector on your home theater.
- 2 Press **USB**.
↳ A content browser is displayed.
- 3 Select a file and then press **OK**.
- 4 Use the play buttons to control play (see 'Play buttons' on page 14).

Audio, video, and picture options



Use advanced features when you play pictures, audio and video files from a disc or a USB storage device.

Audio options


For CDDA:

- 1 Press  **INFO** repeatedly to cycle through the following options:
 - Show the current track information and time.
 - **Disc Go To**: Enter the disc time to skip to a specific part of the disc.
 - **Track Go To**: Enter the track time to skip to a specific part of the track.
 - **Select Track**: Select a specific track.

For MP3:

- 1 Press  **INFO** to display the remaining time of the current track.
- 2 Press  **INFO** again to enter track time mode, and then press the **Numeric buttons** to input the track time.




Video options

- 1 Press  **INFO**.

↳ The video options menu is displayed. Depending on the video source, some options are not available.

- 2 Press the **Navigation buttons** and **OK** to select and change:
 - **[Title]**: Select a specific title.
 - **[Chapter]**: Select a specific chapter.
 - **[Track]**: Select a specific track (for VCD/SVCD only).
 - **[Audio]**: Select audio language for video.
 - **[Subtitle]**: Select subtitle language for video.
 - **[Angle]**: Select video scenes recorded in different camera angles.
 - **[TT Time]**: Skip to a specific part of the video by entering the title time.
 - **[Ch Time]**: Skip to a specific part of the video by entering the chapter time.
 - **[Disc Time]**: Skip to a specific part of the video by entering the disc time (for VCD/SVCD only).
 - **[Track Time]**: Skip to a specific part of the video by entering the track time (for VCD/SVCD only).
 - **[Preview]**: Select a content preview for disc.
 - **[Repeat]**: Select a repeat mode.
 - **[Time Disp.]**: Select the information of time display.

Picture options

- 1 Press  **INFO** to access picture preview mode.
↳ 12 thumbnail pictures are displayed.
- 2 Press  /  to go to previous or next preview page.
- 3 Press the **Navigation buttons** and **OK** to select a picture.

Musical slideshow

If the picture and audio files are from the same disc or USB storage device, you can create a musical slideshow.

- 1 Select an audio track and then press **OK**.
- 2 Press **↩ BACK** and then go to the picture folder.
- 3 Select a picture and then press **OK** to start the slideshow.
- 4 Press **■** to stop slideshow.
- 5 Press **■** again to stop music.

Radio

Listen to FM radio on your home theater, and store up to 40 radio stations.

Note

- AM and digital radio are not supported.
- If no stereo signal is detected, or if fewer than five stations are found, you are prompted to install the radio stations again.

- 1 Connect the FM antenna to the **ANTENNA FM** on your home theater.
 - For the best reception, place the antenna away from the TV or other sources of radiation.
- 2 Press **RADIO**.
 - ↳ If you have already installed the radio stations, the last channel that you listened to is played.
 - ↳ If you have not installed any radio stations, the message **AUTO INSTALL...PRESS PLAY** appears on the display panel. press **▶||**.
- 3 Use the remote control to listen or to change radio stations.

| Button | Action |
|-------------------------------|--|
| Numeric buttons, ◀ / ▶ | Select a preset radio station. |
| Navigation buttons | Left/Right: Search for a radio station. Up/Down: Fine tune a radio frequency. |
| ■ | Press to stop the installation of radio stations. Press and hold to erase the preset radio station. |
| PROGRAM | Manual: Press once to access program mode, and press again to store the radio station. Automatic: Press and hold for three seconds to reinstall the radio stations. |

Tuning grid

In some countries, you can toggle the FM tuning grid between 50 kHz and 100 kHz. Switching the tuning grid erases all preset radio stations.

- 1 Press **RADIO**.
- 2 Press **■**.
- 3 Press and hold **▶|| (Play/Pause)** to toggle between 50 kHz or 100 kHz.

MP3 player

Connect a MP3 player to play audio files.

What you need

- An MP3 player.
- A 3.5mm stereo audio cable.

- 1 Using the 3.5mm stereo audio cable, connect the MP3 player to the **MUSIC iLINK** connector on your home theater.
- 2 Press **SOURCE** repeatedly until **MUSIC I-LINK** appears on the display panel.

- Press the buttons on the MP3 player to select and play audio files.

Create MP3 files

Use your home theater to convert audio CDs into MP3 files.

What you need

- An audio disc.
- A USB storage device.

- Connect a USB storage device to your home theater.
- Play your audio CD (CDDA).
- Press **CREATE MP3**.
↳ A confirmation message is displayed.
- Select **[Yes]**, and then press **OK**.
↳ The create MP3 screen is displayed. The right panel contains MP3 settings and the left panel shows the audio tracks.

| CREATE MP3 | | | |
|--------------|---------|-------------------------------|--------------|
| OPTIONS | | TRACK | |
| Speed | Normal | <input type="radio"/> Track01 | 04:14 |
| Bitrate | 128kbps | <input type="radio"/> Track02 | 04:17 |
| CRT ID3 | Yes | <input type="radio"/> Track03 | 03:58 |
| Device | USB1 | <input type="radio"/> Track04 | 04:51 |
| SUMMARY | | <input type="radio"/> Track05 | 03:53 |
| Select Track | 0 | <input type="radio"/> Track06 | 04:09 |
| Time | 00:00 | <input type="radio"/> Track07 | 04:38 |
| Start | Exit | Select All | Deselect All |

- Press the **Navigation buttons** and **OK** to select and change:
 - [Speed]**: Select the write-to-file speed.
 - [Bitrate]**: Select the conversion quality.
 - [CRT ID3]**: Copy the tracks information when converting to MP3 files.

- [Device]**: Select the USB storage device which you use to store the MP3 files.

- Navigate to the right panel, select the audio tracks and press **OK**.
 - To select all tracks, navigate to **[Select All]**, and then press **OK**.
- Select **[Start]** and then press **OK** to start the MP3 conversion.
 - ↳ A new folder which contains the MP3 files is created in the USB storage device.
 - To exit the menu, select **[Exit]**, and then press **OK**.

Note

- Do not remove the USB and press any buttons when the conversion is in progress.
- DTS CDs and copy-protected CDs cannot be converted.
- Write-protected or password-protected USB storage device cannot be used to store MP3 files.

Karaoke

Available only in selected model and region

Play a Karaoke disc on your home theater and sing along with the music.

What you need

- A Karaoke microphone.
- Karaoke discs.

Caution

- To prevent loud feedback or unexpected noise, turn the microphone volume to the minimum before you connect the microphone to your home theater.

- Connect a karaoke microphone to the **MIC** connector on your home theater.
- Switch your TV to the correct source for your home theater.

- 3 Play a karaoke disc.
- 4 Press **VOCAL** to turn off the vocals and sing through the microphone.
- 5 Press **MICVOL +/-** to change the microphone volume.
- 6 For more karaoke setup, press **KARAOKE**.
↳ A Karaoke setup page is displayed.
- 7 Press the **Navigation buttons** and **OK** to select and change the settings.
 - **[Mic]**: Turn the microphone on or off.
 - **[Echo Level]**: Change the echo level.
 - **[Key]**: Change the pitch to match your voice.
 - **[Score]**: Set the karaoke scoring.

Choose sound

This section helps you choose the ideal sound for your video or music.

Sound mode

Select predefined sound modes to suit your video or music.

- 1 Press **SOUND** repeatedly to select a sound mode.
 - **MOVIE**: Enjoy a cinematic audio experience, specially enhanced for movies.
 - **MUSIC**: Recreate the original recording environment of your music, in the studio or at a concert.
 - **ORIGINAL**: Experience the original sound of your movies and music, without added sound effects.
 - **NEWS**: Hear every word with optimized speech and clear vocals.
 - **GAMING**: Enjoy thrilling arcade sounds, ideal for action-packed video games or loud parties.

Surround sound mode

Experience an immersive audio experience with surround sound modes.

- 1 Press **SURR** repeatedly to select a surround mode.
 - **5CH STEREO**: Enhanced stereo sound. Ideal for party music.
 - **MULTI-CH/DOLBY PLII**: Traditional 5.1 channel for a more relaxing cinematic experience.
 - **STEREO**: Two-channel stereo sound. Ideal for listening to music.



Note

- If the audio source is a 2.1 channel, multi-channel mode will output 5-channel stereo sound.

5 Change settings

The home theater settings are already configured for optimal performance. Unless you have a reason to change a setting, we recommend that you keep the default setting.

Note

- You cannot change a setting that is grayed out.
- To return to the previous menu, press **↶** BACK. To exit the menu, press **⏏** SETUP.

Language settings

Onscreen display language

- 1 Press **⏏** SETUP.
- 2 Select **[General Setup]** and then press **OK**.
 - **[OSD Language]**: Select a display language for menu.

Disc language

- 1 Press **⏏** SETUP.
- 2 Select **[Preference Setup]** and then press **OK**.
 - **[Audio]**: Select an audio language for discs.
 - **[Subtitle]**: Select a subtitle language for discs.
 - **[Disc Menu]**: Select a menu language for discs.

Note

- If your preferred disc language is not available, select **[Others]** from the list, and enter the 4-digit language code found at the end of this user manual.
- If you select a language that is not available on a disc, the home theater uses the default language of the disc.

Picture and video settings

- 1 Press **⏏** SETUP.
- 2 Select **[Video Setup]** and then press **OK**.
 - **[TV System]**: Select a video format supported by the TV.
 - **[TV Display]**: Select a picture format to fit the TV screen.
 - **[HDMI Setup]**: **[Wide Screen Format]**: For 16:9 wide screen TV display setting. **[HDMI Video]**: Select the resolution of the video signal being output from the HDMI OUT.
 - **[Picture Settings]**: Select color settings for the video display on TV.
 - **[HD JPEG]**: Enable or disable high definition picture display.

Note

- If you change a setting, make sure that the TV supports the new setting.

Audio settings

- 1 Press **⏏** SETUP.
- 2 Select **[Audio Setup]** and then press **OK**.
 - **[HDMI Audio]**: HDMI audio is automatically down-mixed to two channel for TV speakers. If you do not want to output audio through your TV, disable the HDMI audio.
 - **[Night Mode]**: Select quiet or full dynamic sound. Night mode decreases the volume of loud sounds and increases volume of sounds such as speech. Applicable to Dolby Digital encoded DVD discs only.

Parental control settings

Password and Ratings

- 1 Press **⏏** **SETUP**.
- 2 Select **[Preference Setup]** and then press **OK**.
 - **[Password]**: Set or change your password for parental control access. If you do not have a password or have forgotten your password, enter **0000**.
 - **[Parental]**: Enable maturity-based restricted access for playback of DVD-video that are recorded with ratings. To play discs irrespective of the rating, select **[8 Adult]**.

Lock disc

- 1 Press **⏏** **SETUP**.
- 2 Select **[General Setup]** and then press **OK**.
 - **[Disc Lock]**: Lock the disc to restrict play. You can lock up to 20 discs on your home theater.



Note

- To play a locked disc, follow the onscreen instructions to enter the password, and then press **OK**.

Display settings

- 1 Press **⏏** **SETUP**.
- 2 Select **[Preference Setup]** and then press **OK**.
 - **[PBC]**: Enable or disable the content menu navigation of VCD and SVCD discs with Play Back Control feature.
 - **[MP3/JPEG Display]**: Select the content display for MP3/JPEG files.

Energy saving settings

- 1 Press **⏏** **SETUP**.
- 2 Select **[General Setup]** and then press **OK**.
 - **[Screen Saver]**: Switch the home theater to screen saver mode after 10 minutes of no activity.
 - **[Auto Standby]**: Switch the home theater to standby mode after 30 minutes of no activity when in disc or USB mode.
 - **[Sleep Timer]**: Switch the home theater to standby mode after the elapsed time.
 - **[Display Dim]**: Set the brightness of the home theater front panel display.

Restore default settings

- 1 Press **⏏** **SETUP**.
- 2 Select **[Preference Setup]** > **[Default]**, and then press **OK**.
- 3 Select **[Reset]** and then press **OK** to confirm.
 - ↳ Your home theater is reset to its default settings, except for parental control setting.

6 Update software

Philips continually tries to improve its products. To get the best features and support, update your home theater with the latest software.

Compare the version of your current software with the latest version on www.philips.com/support. If the current version is lower than the latest version available on the Philips support website, upgrade your home theater with the latest software.

Caution

- Do not install a lower version of software than the current version installed on your product. Philips is not liable for problems caused due to software downgrade.

Check software version

Check the version of the current software installed on your home theater:

- 1 Press **SETUP**.
- 2 Select **[Preference Setup]** and then press **OK**.
- 3 Select **[Version Info.]** and then press **OK**.
↳ The software version is displayed.

Update software through USB

What you need

- A USB flash drive that is FAT-formatted, with at least 75MB of memory. Do not use a USB hard drive.
- A computer with Internet access.
- An archive utility that supports the ZIP file format.

Step 1: Download the latest software

- 1 Connect a USB flash drive to your computer.
- 2 In your web browser, go to www.philips.com/support.
- 3 At the Philips Support website, find your product and locate the **Software and drivers**.
↳ The software update is available as a zip file.
- 4 Save the zip file in the root directory of your USB flash drive.
- 5 Use the archive utility to extract the software update file in the root directory.
- 6 Disconnect the USB flash drive from your computer.

Step 2: Update the software

Caution

- Do not switch off the home theater or remove the USB flash drive during the update.

- 1 Connect the USB flash drive containing the downloaded file to your home theater:
 - Make sure that the disc compartment is closed and there is no disc inside.
- 2 Switch your TV to the correct source for your home theater.
- 3 Follow the onscreen instructions to confirm the update.
↳ Once complete, the home theater automatically switches off and restarts. If it does not, disconnect the power cord for a few seconds and then reconnect it.

7 Product specifications

Note

- Specifications and design are subject to change without notice.

Region codes

The type plate on the back or bottom of the home theater shows which regions it supports.

| Country | DVD |
|-----------------------------|---|
| Europe, United Kingdom |  |
| Asia Pacific, Taiwan, Korea |  |
| Latin America |  |
| Australia, New Zealand |  |
| Russia, India |  |
| China |  |

Media formats

- DVD-Video, DVD+R/RW, DVD-R/RW, DVD+R-R DL, CD-R/CD-RW, Audio CD, Video CD/SVCD, Picture files, MP3 media, WMA media, DivX media, USB storage device

File formats

- Audio: .mp3, .wma

- Video: .avi, .divx, .mpg, .mpeg,
- Picture: .jpg, .jpeg

Amplifier

- Total output power: 1000W RMS (+/- 0.5dB, 30% THD)
- Frequency response: 20 Hz-20 kHz / ± 3 dB
- Signal-to-noise ratio: > 65 dB (CCIR) / (A-weighted)
- Input sensitivity:
 - AUX1/AUX2: 1 V
 - Music iLink: 350 mV

Video

- Signal system: PAL / NTSC
- HDMI output: 480i/576i, 480p/576p, 720p, 1080i, 1080p

Audio

- S/PDIF Digital audio input:
 - Coaxial: IEC 60958-3
 - Optical: TOSLINK
- Sampling frequency:
 - MP3: 32 kHz, 44.1 kHz, 48 kHz
 - WMA: 44.1 kHz, 48 kHz
- Constant bit rate:
 - MP3: 32 kbps - 320 kbps
 - WMA: 48 kbps - 192 kbps

Radio

- Tuning range:
 - Europe/Russia/China: FM 87.5-108 MHz (50 kHz)
 - Asia Pacific/Latin America: FM 87.5-108 MHz (50/100 kHz)
- Signal-to-noise ratio: FM 50 dB
- Frequency response: FM 180 Hz-12.5 kHz / ± 3 dB

USB

- Compatibility: Hi-Speed USB (2.0)

- Class support: USB Mass Storage Class (MSC)
- File system: FAT16, FAT32

Main unit

- Power supply:
 - Europe/China/Russia/India: 220-240V~, 50 Hz
 - Latin America/Asia Pacific: 110-127V/220-240V~, 50-60 Hz
- Power consumption: 105 W
- Standby power consumption: ≤ 0.5 W
- Dimensions (WxHxD): 435 x 56 x 344 mm
- Weight: 3.0kg

Subwoofer

- Impedance: 4 ohm
- Speaker drivers: 203 mm (8") woofer
- Dimensions (WxHxD): 178 x 303 x 343 mm
- Weight: 4.08 kg

Speakers

Center speaker:

- Speaker impedance: 4 ohm
- Speaker drivers: 1 x 76.2 mm (3") woofer
- Dimensions (WxHxD): 223 x 101.5 x 93.5 mm
- Weight: 0.6 kg

Front/Rear speaker:

- Speaker impedance: 4 ohm
- Speaker drivers: 1 x 76.2 mm (3") woofer
- Dimensions (WxHxD):
 - Speakers: 90 x 185 x 105.5 mm
 - Tall speakers: 247 x 1091 x 242 mm
- Weight:
 - Speakers: 0.54 kg/each
 - Tall speakers: 2.19 kg/each

Remote control batteries

- 2 x AAA-R03-1.5 V

Laser

- Type: Semiconductor laser GaAlAs (CD)
- Wave length: 645 - 665 nm (DVD), 770 - 800 nm (CD)
- Output power: 6 mW (DVD), 7 mW (VCD/CD)
- Beam divergence: 60 degrees.

8 Troubleshooting



Warning

- Risk of electric shock. Never remove the casing of the product.

To keep the warranty valid, never try to repair the product yourself.

If you have problems using this product, check the following points before you request service.

If you still have a problem, get support at www.philips.com/support.

Main unit

The buttons on the home theater do not work.

- Disconnect the home theater from the power supply for a few minutes, then reconnect.

Picture

No picture.

- Make sure that the TV is switched to the correct source for the home theater.
- If this happens when you change the TV system, press **▲** to open the disc compartment, and then **439** on the remote control to restore the default TV system.

No picture on a TV connected through HDMI.

- Make sure that the HDMI cable is not faulty. If it is faulty, replace it with a new cable.
- If this happens when you change the HDMI video resolution, press **▲** to open the disc compartment, and then **304** on the remote control to restore the default setting.
- Wait for 10 seconds for auto recovery, or change the HDMI video setting.

Disc does not play high-definition video.

- Make sure that the disc contains high-definition video.
- Make sure that the TV supports high-definition video.
- Use an HDMI cable to connect to the TV.

Sound

No sound from home theater speakers.

- Connect the audio cable from your home theater to your TV or other devices (see 'Connect audio from TV and other devices' on page 11).
- Set up the audio for the connected device (for HDMI connection only) (see 'Set up the audio' on page 13).
- Reset your home theater to its factory settings (see 'Restore default settings' on page 21), then switch it off and switch on again.
- On your home theater, press **SOURCE** repeatedly to select the correct audio input.

Distorted sound or echo.

- If you play audio from the TV through the home theater, make sure that the TV is muted.

Audio and video are not synchronized.

- 1) Press and hold **AUDIO SYNC**. 2) Press the **+/-** or **Navigation buttons** within 5 seconds to synchronize the audio with the video.

Play

Cannot play a disc.

- Clean the disc.
- Make sure that the home theater supports the type of disc (see 'Media formats' on page 23).
- Make sure that the home theater supports the region code of the disc.
- If the disc is a DVD±RW or DVD±R disc, make sure that it is finalized.

Cannot play a DivX file.

- Make sure that the DivX file is encoded according to the 'Home Theater Profile' with the DivX encoder.
- Make sure that the DivX file is complete.

DivX subtitles do not display correctly.

- Make sure that the subtitle file name is the same as the movie file name (see 'Subtitles' on page 15).
- Select the correct character set (see 'Subtitles' on page 15).

Cannot read the contents of a USB storage device.

- Make sure that the format of the USB storage device is compatible with the home theater.
- Make sure that the file system on the USB storage device is supported by the home theater.

'No entry' or 'x' sign appears on the TV.

- The operation is not possible.

EasyLink does not work.

- Make sure that the home theater is connected to a Philips brand EasyLink TV, and the EasyLink option is turned on (see 'Set up EasyLink (HDMI-CEC control)' on page 12).

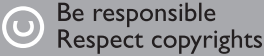
When you switch on the TV, the home theater automatically switches on.

- This behavior is normal when you are using Philips EasyLink (HDMI-CEC). To make the home theater work independently, switch off EasyLink.

9 Notice

This section contains the legal and trademark notices.

Copyright



This item incorporates copy protection technology that is protected by U.S. patents and other intellectual property rights of Rovi Corporation. Reverse engineering and disassembly are prohibited.

Trademarks



Manufactured under license from Dolby Laboratories. Dolby, Pro Logic, and the double-D symbol are trademarks of Dolby Laboratories.



Manufactured under license under U.S. Patent Nos: 5,956,674; 5,974,380; 6,487,535 & other U.S. and worldwide patents issued & pending. DTS, the Symbol, & DTS and the Symbol together are registered trademarks & DTS Digital Surround and the DTS logos are trademarks of DTS, Inc. Product includes software. © DTS, Inc. All Rights Reserved.



DivX®, DivX Ultra®, DivX Certified® and associated logos are trademarks of Rovi

Corporation or its subsidiaries and are used under license.

DivX Ultra® Certified to play DivX® video with advanced features and premium content.

ABOUT DIVX VIDEO: DivX® is a digital video format created by DivX, LLC, a subsidiary of Rovi Corporation. This is an official DivX Certified® device that plays DivX video. Visit divx.com for more information and software tools to convert your files into DivX videos. ABOUT DIVX VIDEO-ON-DEMAND: This DivX Certified® device must be registered in order to play purchased DivX Video-on-Demand (VOD) movies. To obtain your registration code, locate the DivX VOD section in your device setup menu. Go to vod.divx.com for more information on how to complete your registration.



HDMI, and HDMI logo, and High-Definition Multimedia Interface are trademarks or registered trademarks of HDMI licensing LLC in the United States and other countries.



10 Index

A

| | |
|---------------------------------|----|
| audio from TV and other devices | 11 |
| audio input mapping | 12 |
| audio language for discs | 20 |
| audio options | 16 |
| auto standby | 21 |

B

| | |
|-----------|----|
| batteries | 24 |
|-----------|----|

C

| | |
|-------------------------------|-------|
| change password | 21 |
| character set | 15 |
| check current version | 22 |
| connect analog audio cable | 11 |
| connect coaxial audio cable | 11 |
| connect coaxial audio cable | 11 |
| connect composite video cable | 10 |
| connect FM antenna | 5, 17 |
| connect HDMI cable | 9, 10 |
| connect home theater | 8 |
| connect optical audio cable | 11 |
| connect speakers | 8 |
| connect to TV | 9 |
| connectors | 5 |
| consumer support | 4 |
| control play buttons | 14 |
| create MP3 | 18 |

D

| | |
|---------------------------|--------|
| disc menu | 20 |
| discs | 14 |
| display brightness | 21 |
| display menu for MP3/JPEG | 21 |
| display menu for VCD/SVCD | 21 |
| disposal | 4 |
| DivX | 15, 23 |
| DivX subtitles | 15 |

E

| | |
|----------------------|----|
| Easylink (HDMI-CEC) | 12 |
| Easylink audio setup | 13 |
| Easylink controls | 12 |

H

| | |
|------------|----|
| HDMI ARC | 9 |
| HDMI video | 20 |
| HDMI-CEC | 12 |

K

| | |
|---------|----|
| karaoke | 18 |
|---------|----|

L

| | |
|-------------------|----|
| language settings | 20 |
| lock disc | 21 |

M

| | |
|-------------------------|----|
| main unit overview | 5 |
| menu language for discs | 20 |
| MP3 player | 17 |
| musical slideshow | 17 |

N

| | |
|------------|----|
| night mode | 20 |
|------------|----|

O

| | |
|------------------------|----|
| one-touch play | 12 |
| one-touch standby | 12 |
| onscreen menu language | 20 |

P

| | |
|-------------------------|----|
| parental control | 21 |
| parental ratings | 21 |
| password | 21 |
| PBC (play back control) | 21 |
| picture options | 16 |
| picture settings | 20 |
| product serial number | 4 |
| program radio stations | 17 |

| | |
|--------------------------|----|
| R | |
| radio | 17 |
| recycling | 4 |
| remote control overview | 6 |
| repeat mode | 14 |
| restore default settings | 21 |
| rotate pictures | 14 |

| | |
|-------------------------------|----|
| S | |
| screen saver | 21 |
| setup menu | 20 |
| sleep timer | 21 |
| slideshow | 17 |
| sound mode | 19 |
| speakers placement | 8 |
| speakers setup | 11 |
| specifications | 23 |
| subtitle language for discs | 20 |
| supported file format | 23 |
| supported media formats | 23 |
| surround sound | 19 |
| synchronize picture and sound | 14 |
| system audio control | 12 |

| | |
|-----------------|----|
| T | |
| time search | 16 |
| titles | 16 |
| trademarks | 27 |
| troubleshooting | 25 |
| tuning grid | 17 |

| | |
|--------------------|----|
| U | |
| update software | 22 |
| USB storage device | 15 |

| | |
|-------------------|----|
| V | |
| video options | 16 |
| video resolution | 20 |
| VOD code for DivX | 15 |

| | |
|---------------------|---|
| W | |
| wireless rear audio | 9 |



Specifications are subject to change without notice
© 2011 Koninklijke Philips Electronics N.V.
All rights reserved.

HTS5543_68_UM_V1.0

