

HTL9100



# Quick start guide

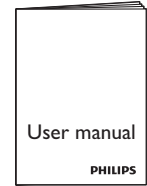
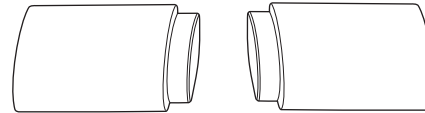
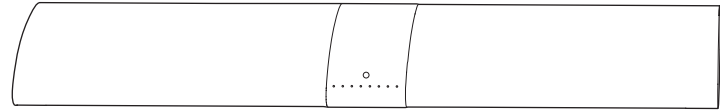
Always there to help you

Register your product and get support at  
[www.philips.com/support](http://www.philips.com/support)

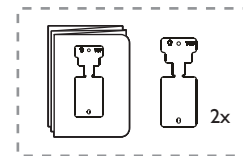
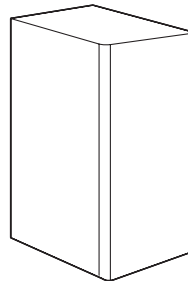
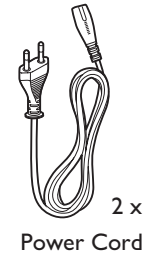
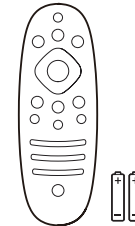




Before using your product, read all accompanying safety information



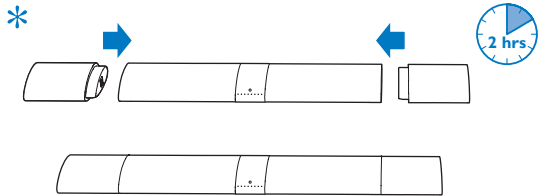
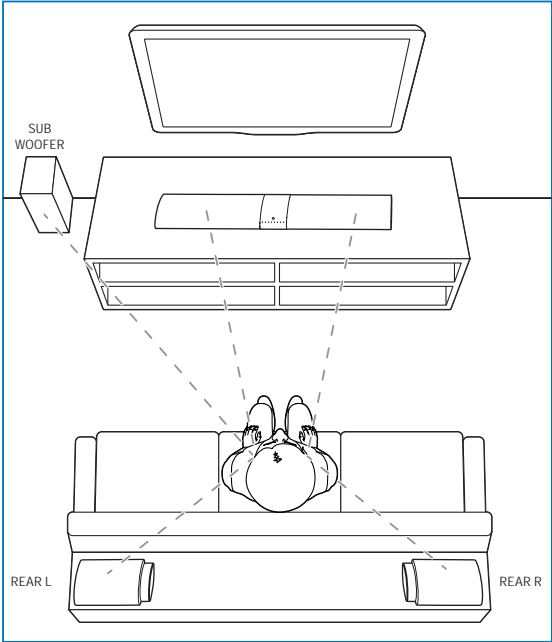
Cable cover



# 1

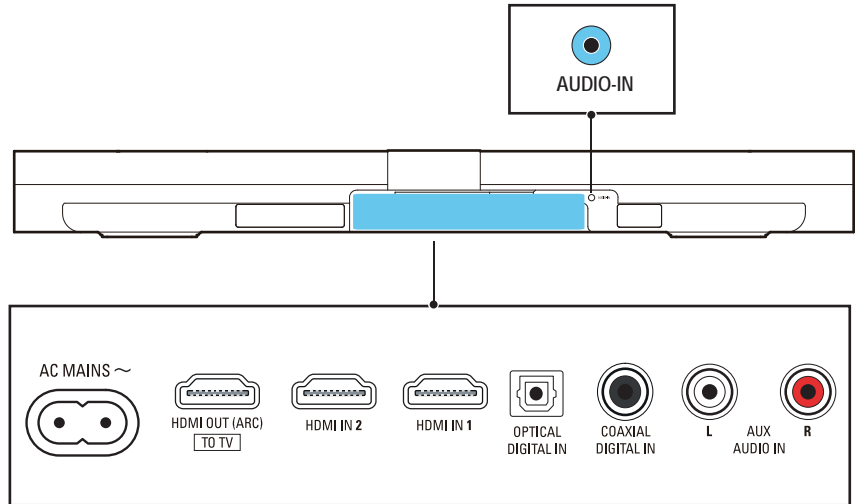
Position the soundbar speakers

\* Charge the surround speakers before use (see the user manual for details)



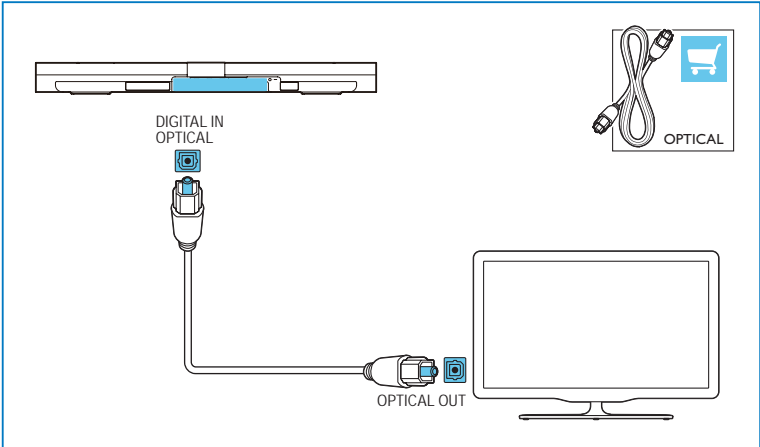
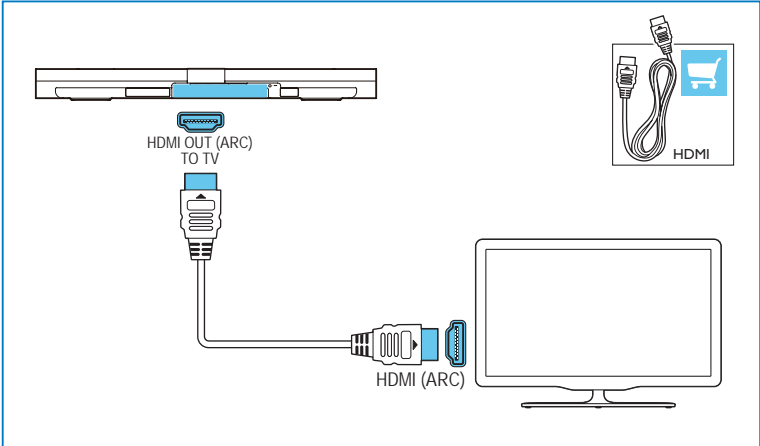
# 2

Connect the soundbar



# 3

Hear audio from TV in one of the following ways

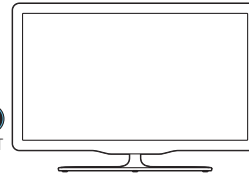




DIGITAL IN  
COAXIAL



COAXIAL OUT



AUDIO IN-AUX

R

L

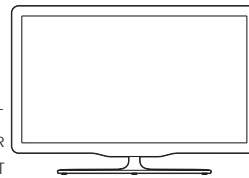


L



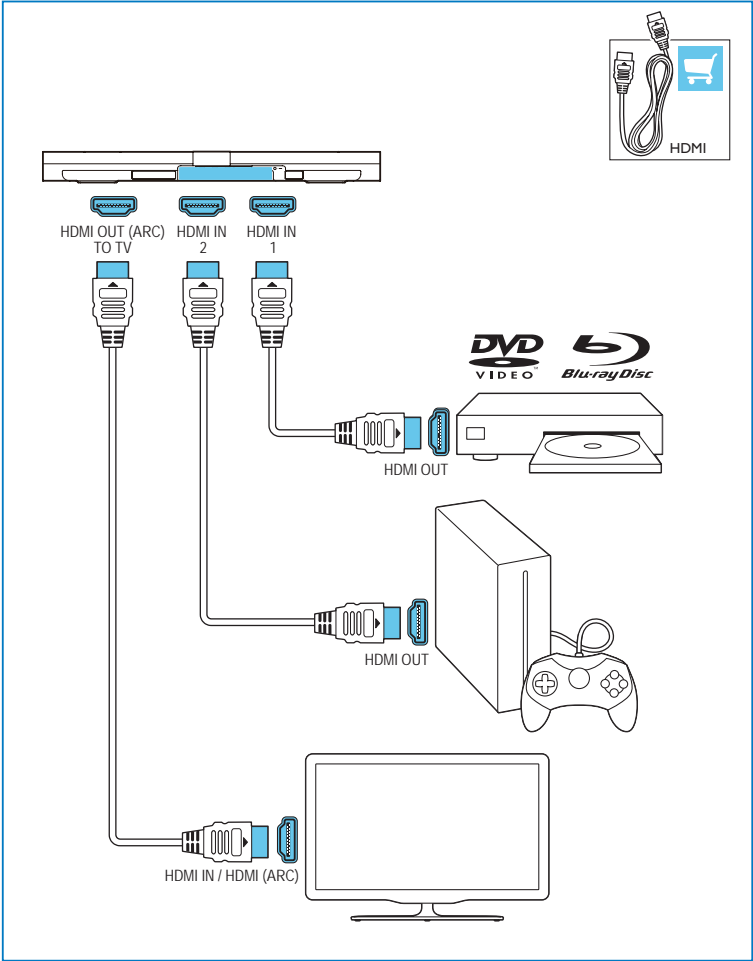
R

AUDIO OUT



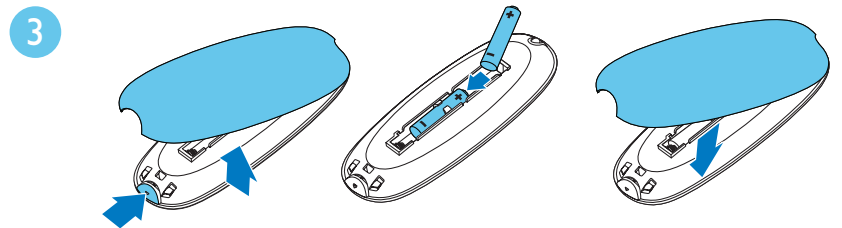
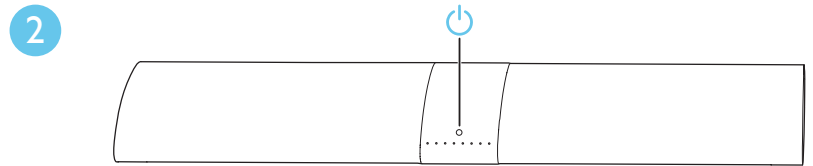
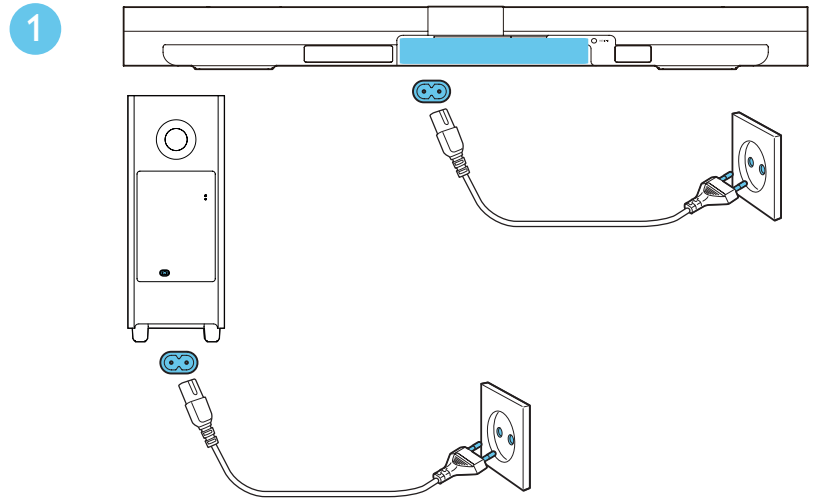
# 4

Enjoy audio and video from your devices



# 5

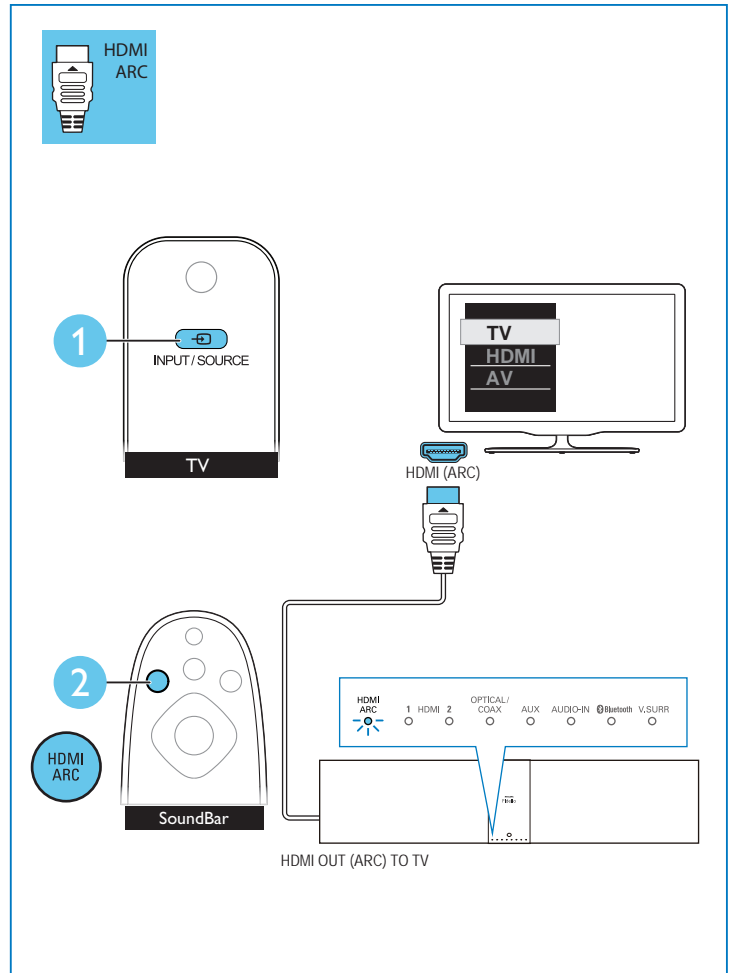
Switch on the SoundBar





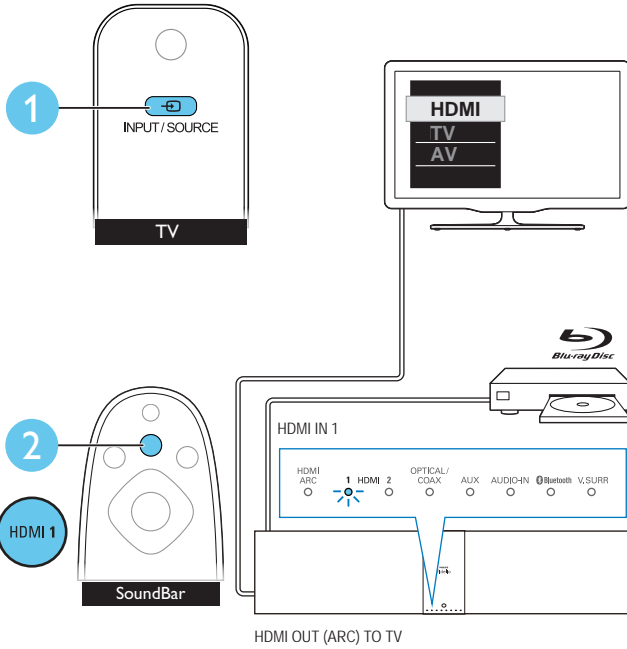
# 6

Select the correct audio source

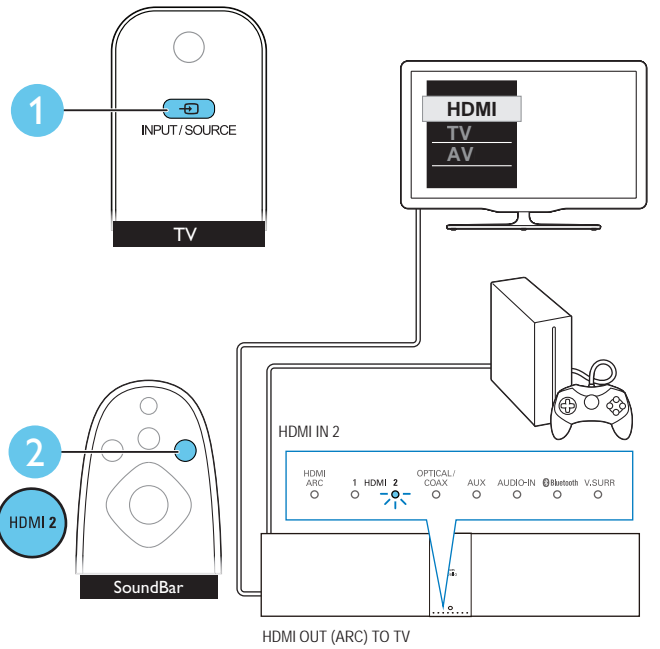


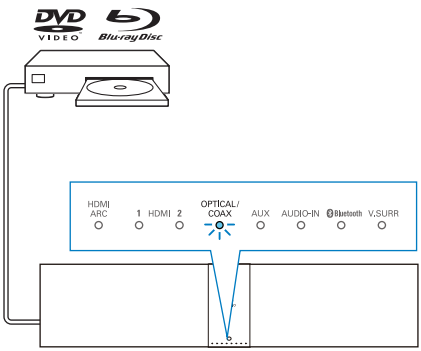
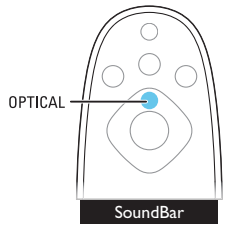
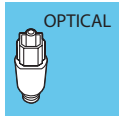


HDMI  
IN 1

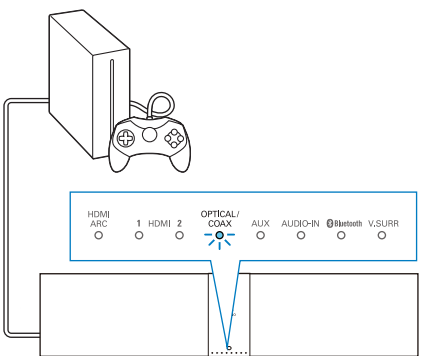
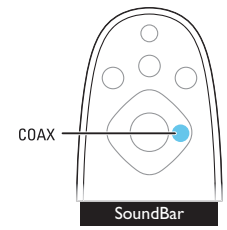


HDMI  
IN 2

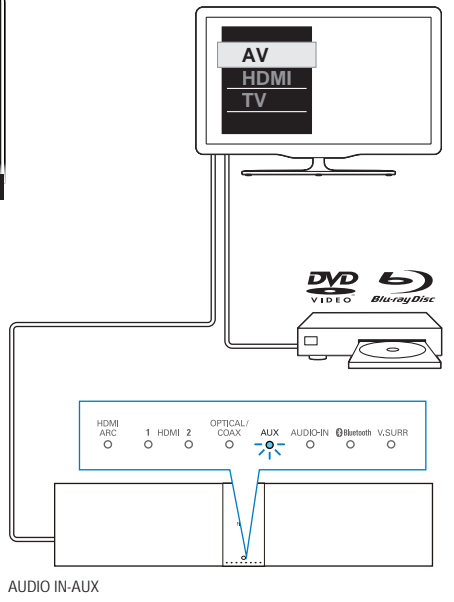
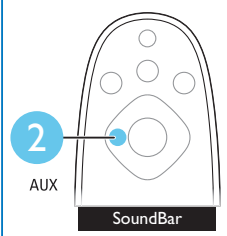
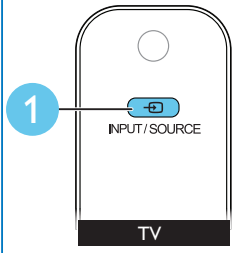
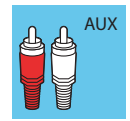




DIGITAL IN OPTICAL



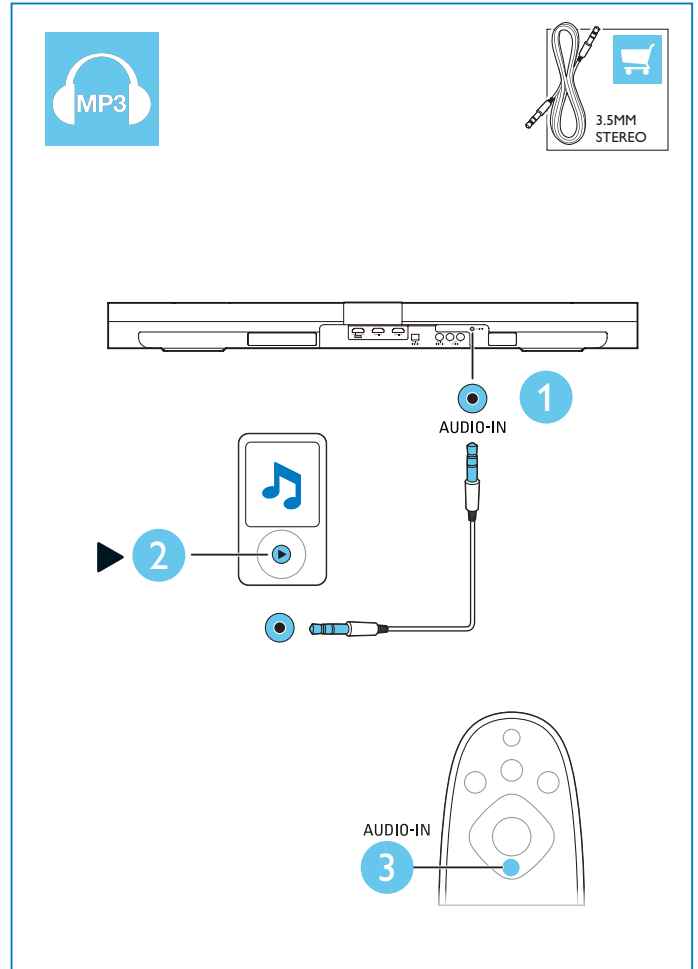
DIGITAL IN COAXIAL



AUDIO IN-AUX

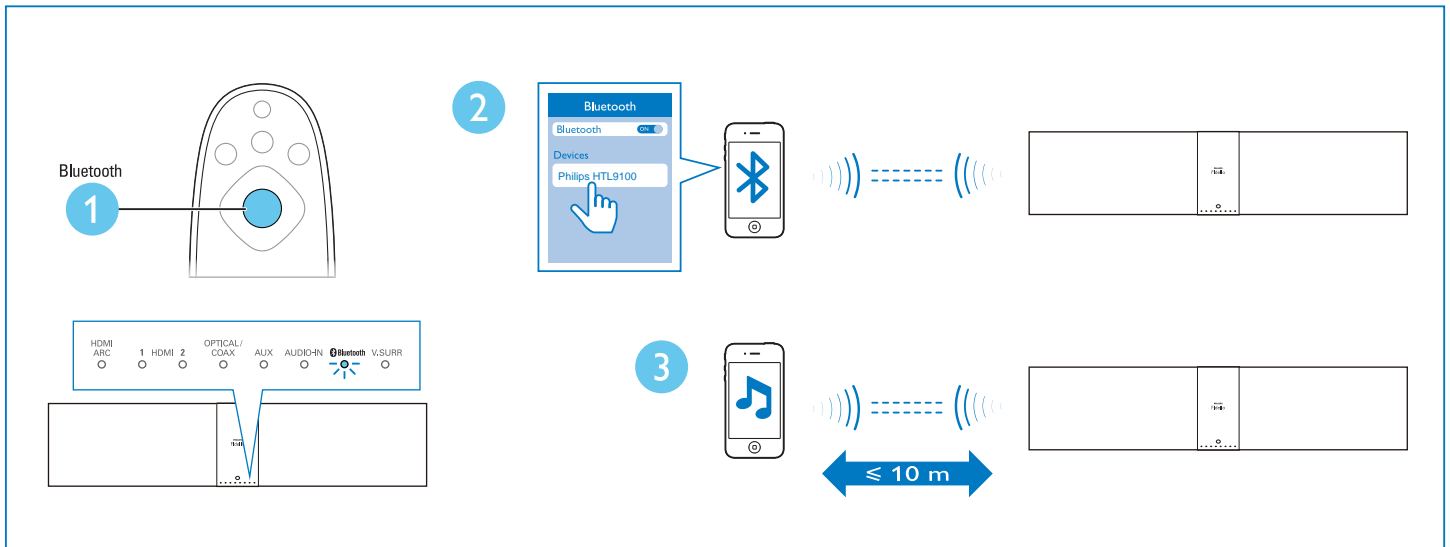
# 7

Play other devices

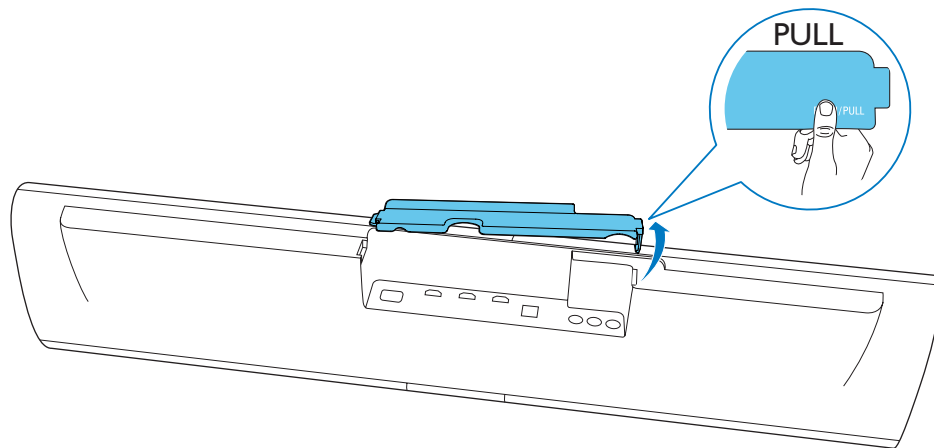
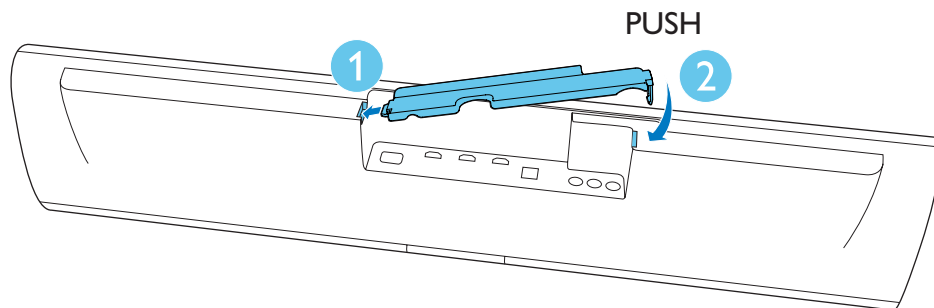


# 8

## Play audio through Bluetooth



Place the cable cover for cable management





Manufactured under license under U.S. Patent Nos: 5,956,674; 5,974,380; 6,487,535 & other U.S. and worldwide patents issued & pending. DTS, the Symbol, & DTS and the Symbol together are registered trademarks & DTS Digital Surround and the DTS logos are trademarks of DTS, Inc. Product includes software. © DTS, Inc. All Rights Reserved.



Manufactured under license from Dolby Laboratories. Dolby, Pro Logic, and the double-D symbol are trademarks of Dolby Laboratories.



The terms HDMI and HDMI High-Definition Multimedia Interface, and the HDMI Logo are trademarks or registered trademarks of HDMI Licensing LLC in the United States and other countries.



The Bluetooth® word mark and logos are registered trademarks owned by Bluetooth SIG, Inc. and any use of such marks by Gibson Innovations Ltd is under license. Other trademarks and trade names are those of their respective owners.



For more information about using this product, visit [www.philips.com/support](http://www.philips.com/support)



[www.philips.com/support](http://www.philips.com/support)



Specifications are subject to change without notice  
2015 © Gibson Innovations Limited. All rights reserved.  
This product has been manufactured by, and is sold under the responsibility of Gibson Innovations Ltd., and Gibson Innovations Ltd. is the warrantor in relation to this product. Philips and the Philips Shield Emblem are registered trademarks of Koninklijke Philips N.V. and are used under license from Koninklijke Philips N.V.

HTL9100\_79/94\_QSG\_V1.0

