

Question?
Contact
Philips



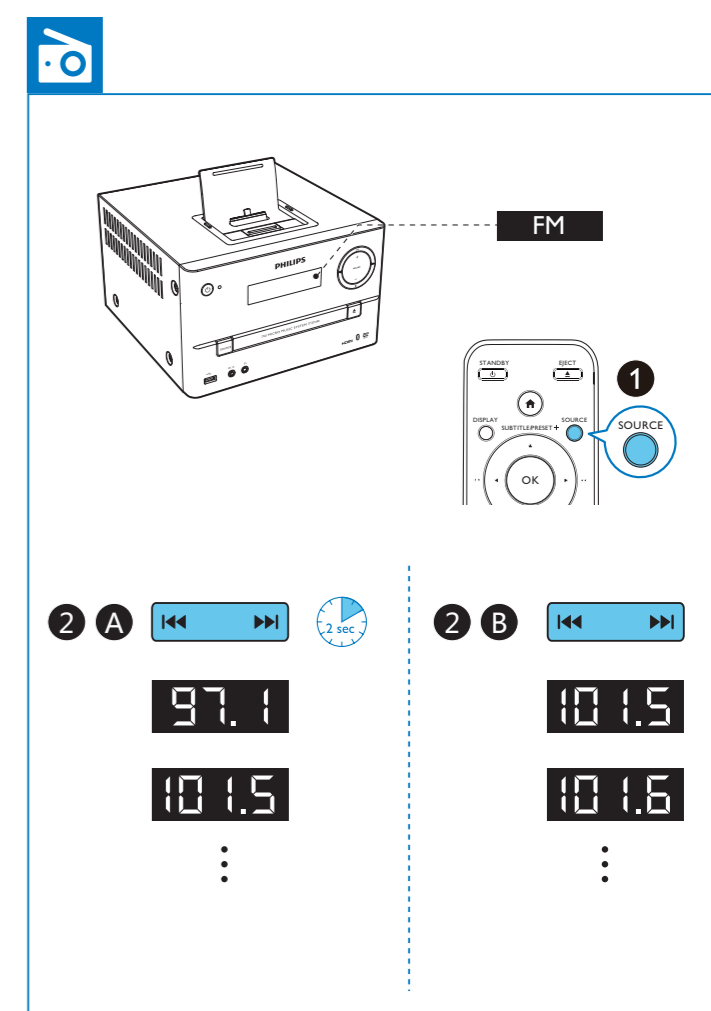
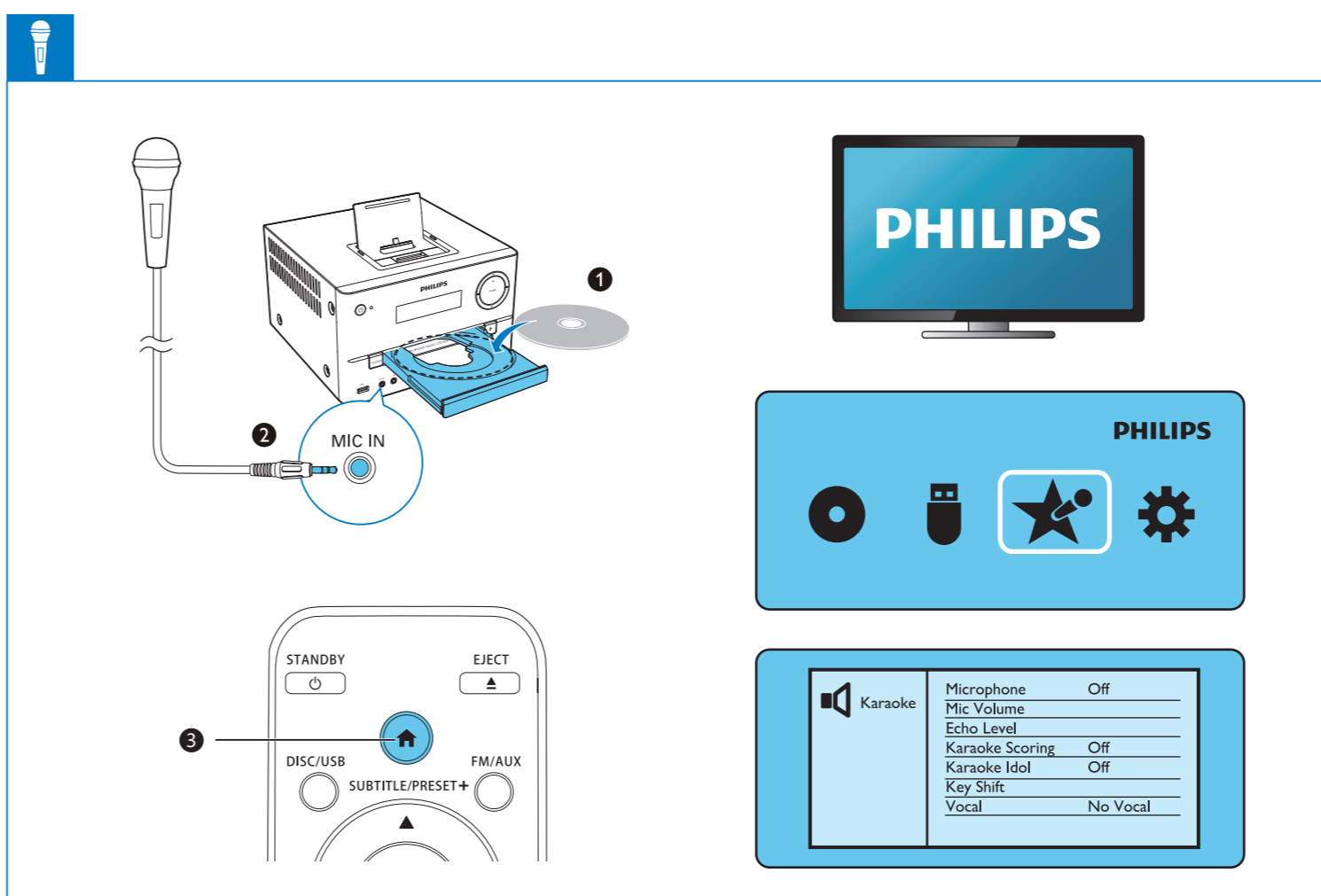
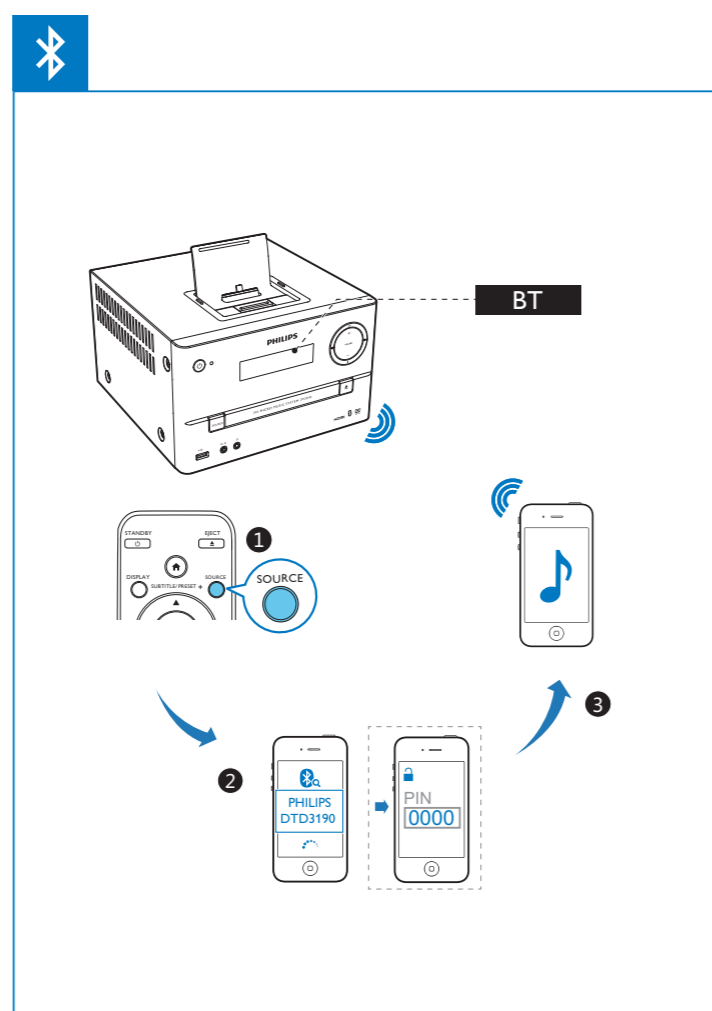
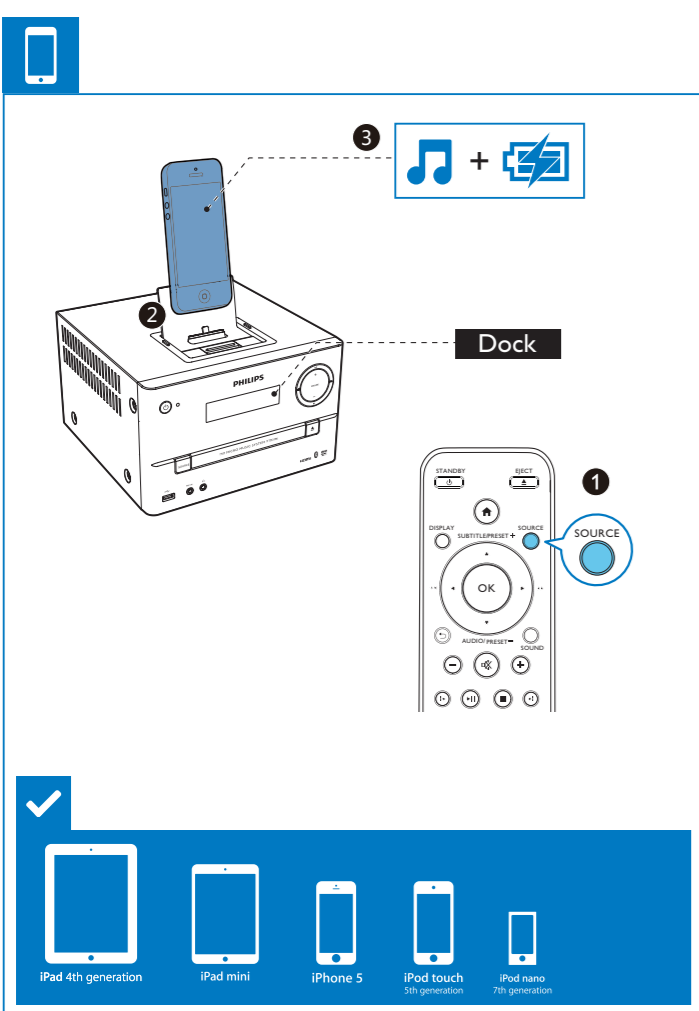
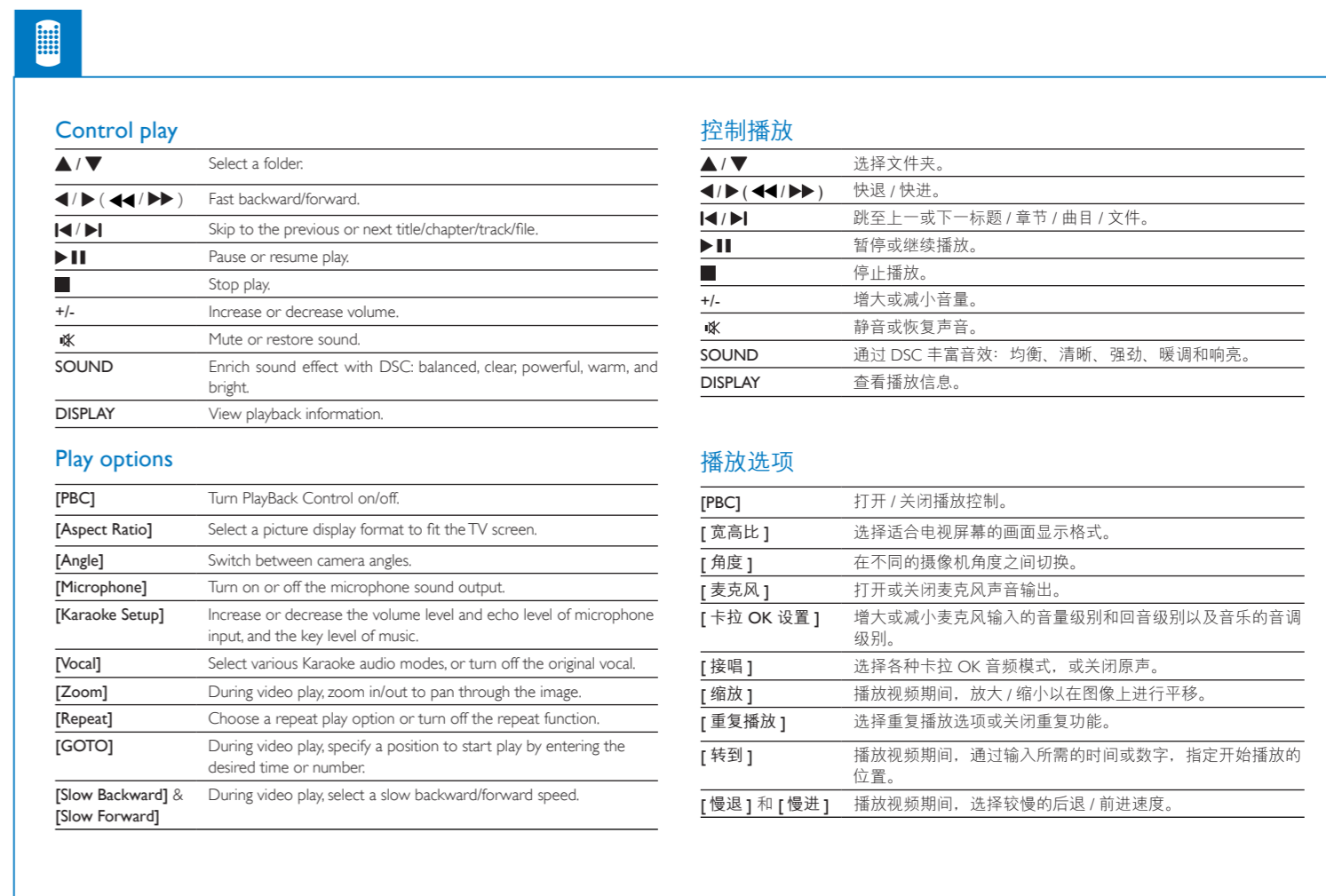
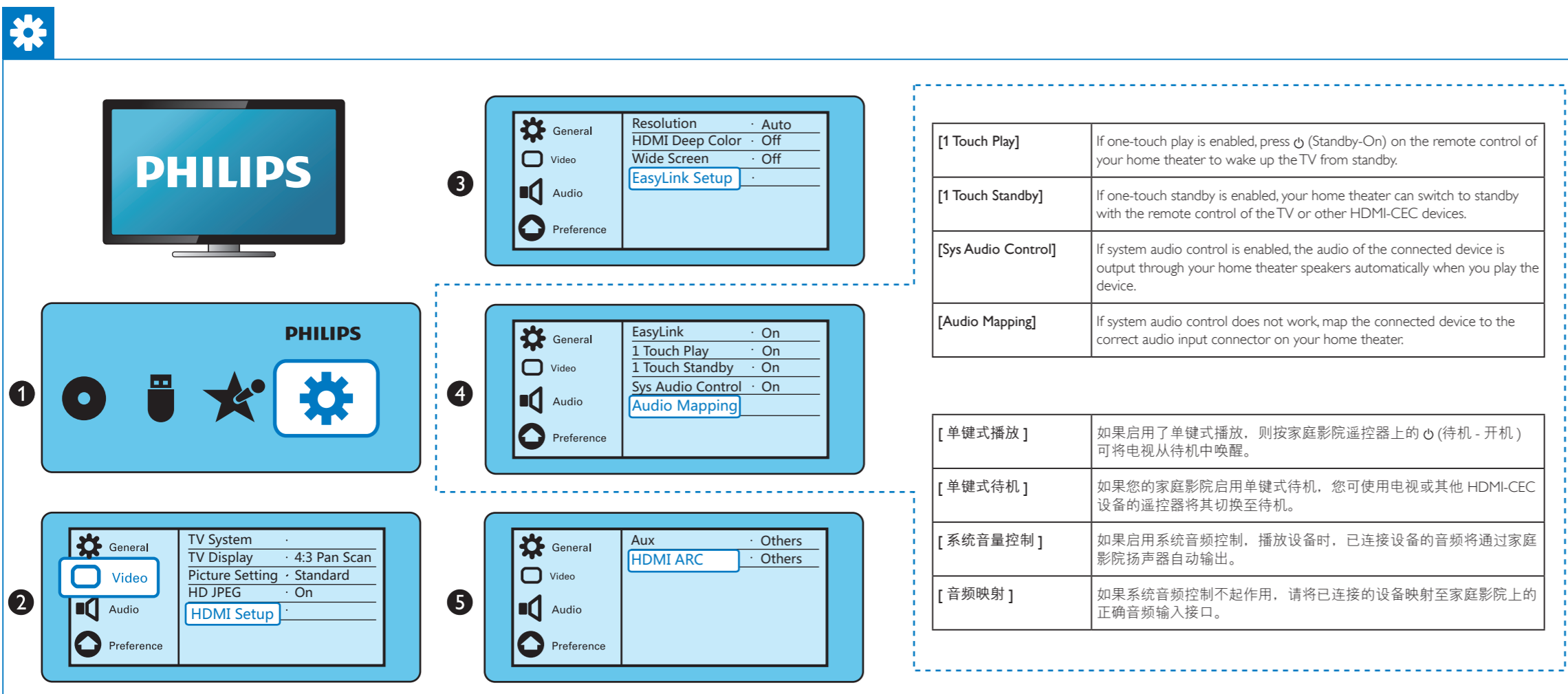
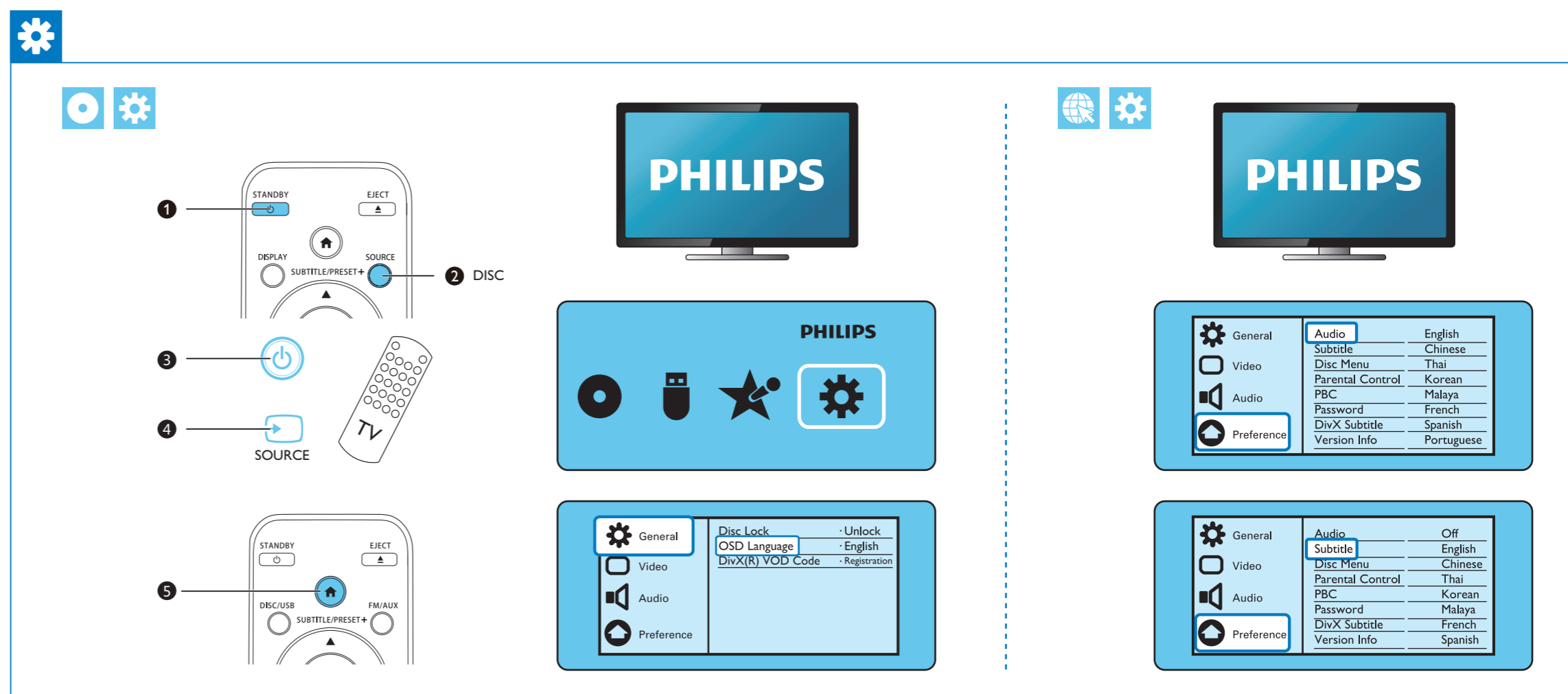
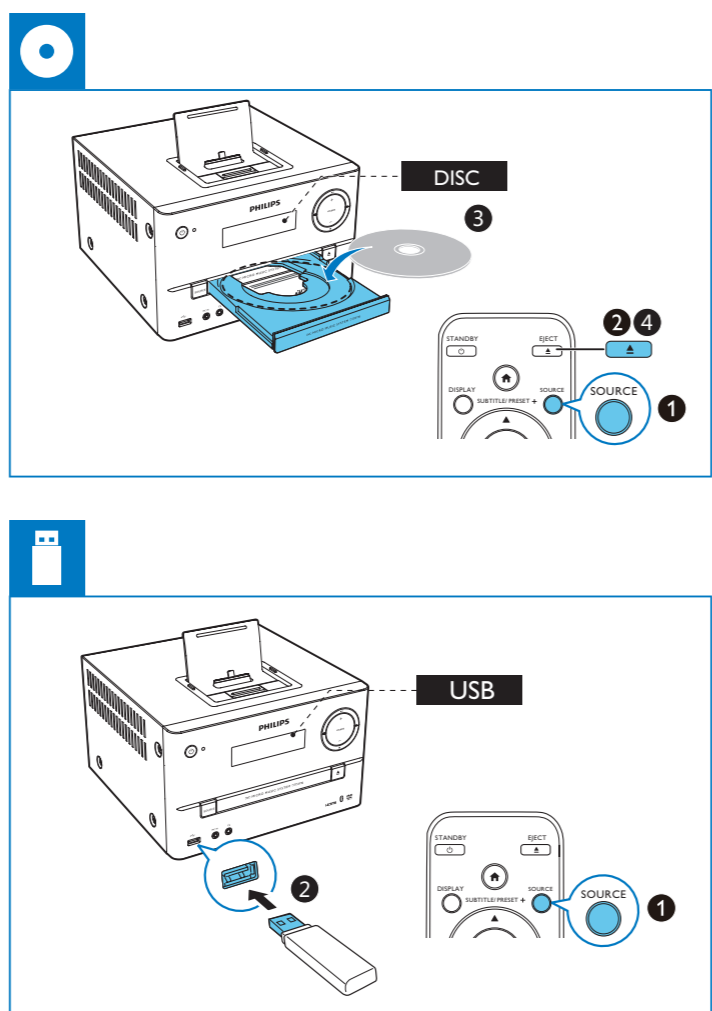
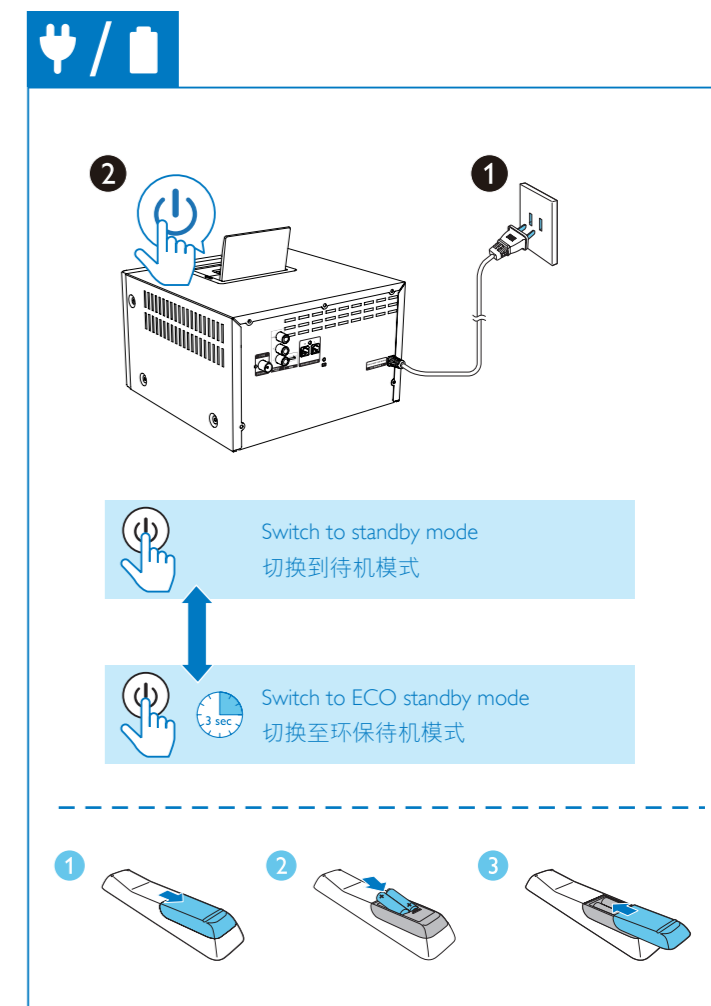
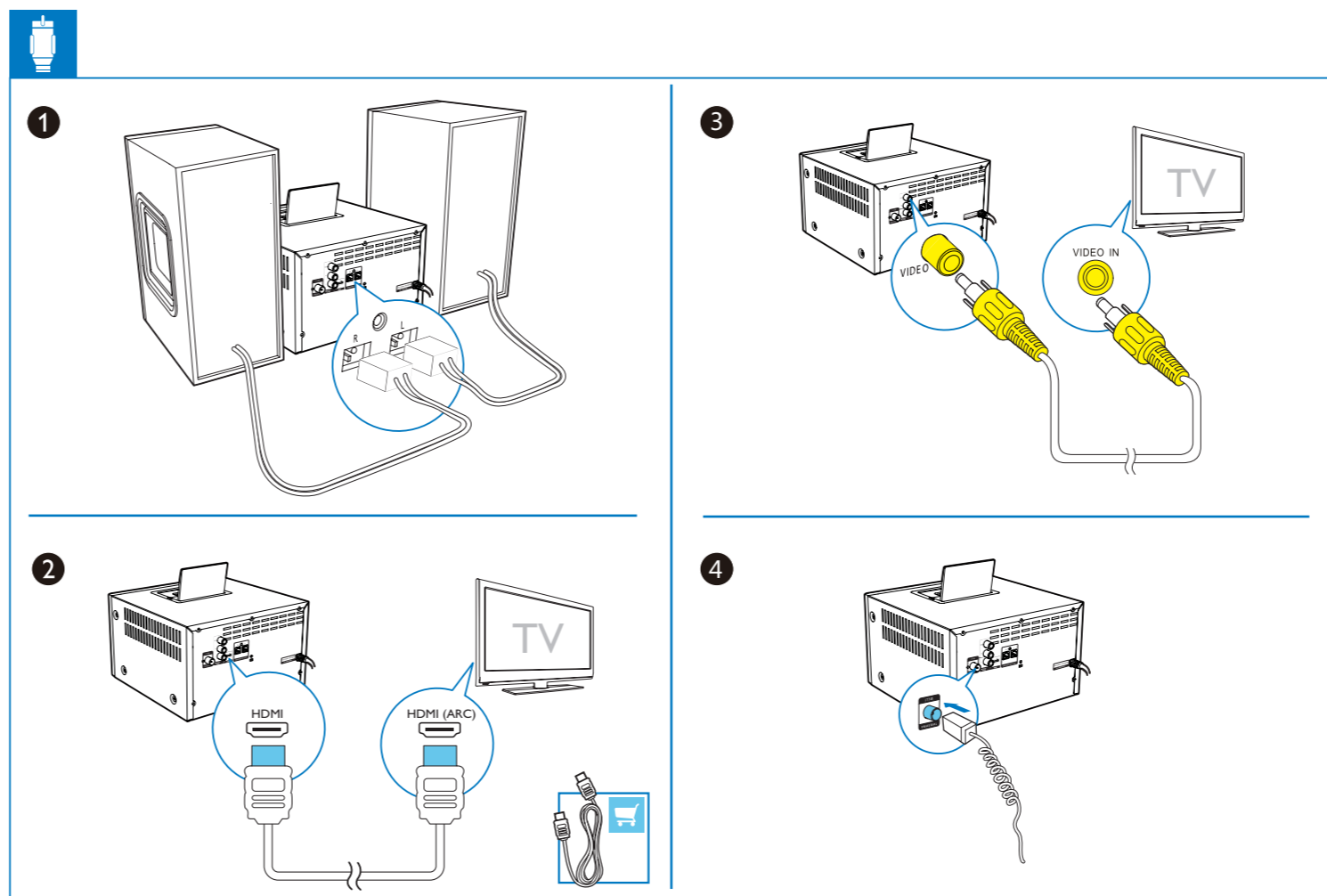
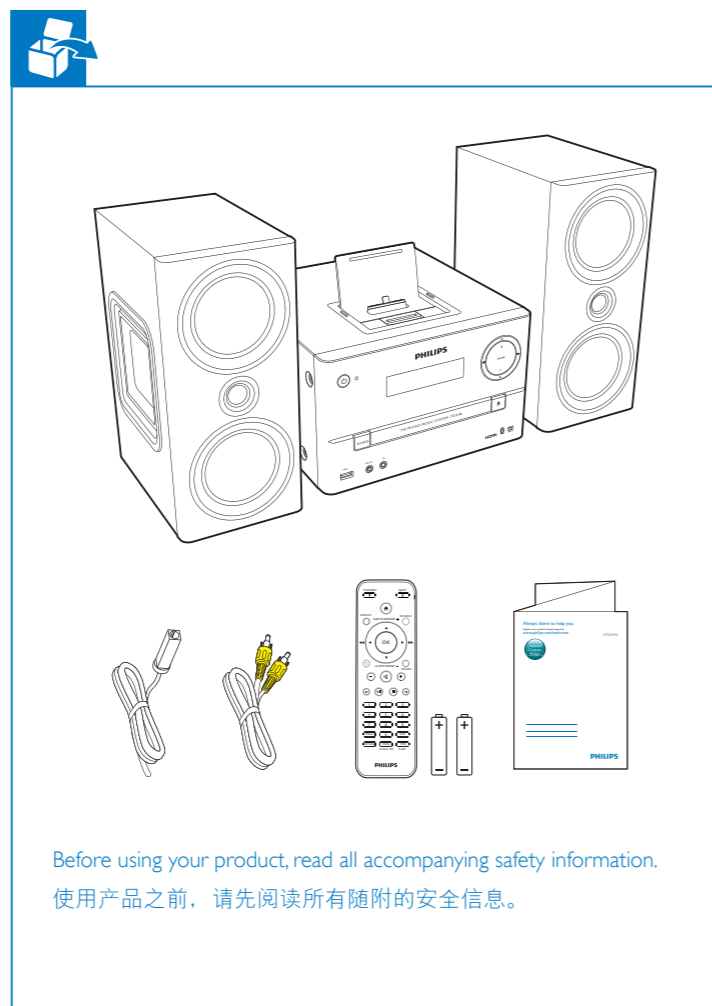
EN Short User Manual
ZH-CN 简明用户手册

PHILIPS



2014 © WOOX Innovations Limited. All rights reserved.
This product was brought to the market by WOOX Innovations Limited or one of its affiliates, further referred to in this document as WOOX Innovations, and is the manufacturer of the product. WOOX Innovations is the warrantor in relation to the product with which this booklet was packaged. Philips and the Philips Shield Emblem are registered trademarks of Koninklijke Philips N.V.

DTD3190_93_Short User Manual_V2.0



Repeat steps 2-3 to set hour and minute.
重复步骤 2-3 设置小时和分钟。

Repeat steps 2-3 to set minute, select a source (disc, USB, or tuner), and adjust volume.
重复步骤 2-3 设置分钟, 选择来源 (光盘、USB 或调谐器) 并调节音量。

To download the full user manual, visit www.philips.com/support.
要下载完整用户手册, 请访问 www.philips.com/support.

EN

You can play DVD discs marked with the following region code:

DVD region code	Countries
ALL	Asia Pacific

Supported disc formats

- Digital Video Discs (DVDs)
- Video CDs (VCDs)
- Super Video CDs (SVCDs)
- Digital Video Discs + Rewritable (DVD+RW)
- Compact Discs (CDs)
- Picture (Kodak, JPEG) files on CDR(W)
- DivX(R) disc on CD-R(W):
- DivX 3.11, 4.x and 5.x

Supported MP3-CD formats:

- ISO 9660
- Max. title/album name: 12 characters
- Max. title number plus album: 255.
- Max. nested directory: 8 levels.
- Max. album number: 32.
- Max. MP3 track number: 999.
- Supported sampling frequencies for MP3 disc: 32 kHz, 44.1 kHz, 48 kHz.
- Supported Bit-rates of MP3 disc are: 32, 64, 96, 128, 192, 256 (kbps).

Compatible USB devices:

- USB flash memory (USB2.0 or USB1.1)
- USB flash players (USB2.0 or USB1.1)
- memory cards (requires an additional card reader to work with this unit)

Supported USB formats:

- USB or memory file format: FAT12, FAT16, FAT32 (sector size: 512 bytes)
- MP3 bit rate (data rate): 32-320 Kbps and variable bit rate
- Directory nesting up to a maximum of 8 levels
- Number of albums/ folders: maximum 99
- Number of tracks/titles: maximum 999
- ID3 tag v2.0 or later
- File name in Unicode UTF8 (maximum length: 32 bytes)

Specifications

Bluetooth version	V2.1 + EDR
Frequency band	2.4GHz ~ 2.48GHz ISM Band
Range	10 m (free space)
Total Output Power	100 W
Tuning Range	87.5-108 MHz
Tuning grid	50 KHz
USB Direct Version	2.0 full speed
USB 5 V Power	≤500 mA
Disc Diameter	12 cm/8 cm
Video Decoding	MPEG-1 / MPEG-2 / DivX
AC power	100-240V ~, 50/60 Hz
Operation Power Consumption	68 W
Eco Standby Power Consumption	<0.5 W
Dimensions	
- Main Unit (W x H x D)	230 x 195 x 235 mm
- Speaker Box (W x H x D)	142 x 307 x 215 mm
Weight	
- Main Unit	2.5 kg
- Speaker Box	2 x 2.8 kg

1 Important

Safety



This bolt of lightning indicates uninsulated material within the device may cause an electrical shock. For the safety of everyone in your household, please do not remove the covering. The exclamation mark calls attention to features for which you should read the enclosed literature closely to prevent operating and maintenance problems. WARNING: To reduce the risk of fire or electric shock, the device should not be exposed to rain or moisture and objects filled with liquids, such as vases, should not be placed on the device. CAUTION: To prevent electric shock, fully insert the plug. (For regions with polarized plugs: To prevent electric shock, match wide blade to wide slot.)

Important Safety Instructions

- Follow all instructions.
- Heed all warnings.
- Do not use this device near water.
- Clean only with dry cloth.
- Do not block any ventilation openings. Install in accordance with the manufacturer's instructions.
- Do not install near any heat sources such as radiators, heat registers, stoves, or other devices (including amplifiers) that produce heat.
- Protect the power cord from being walked on or pinched, particularly at plugs, convenience receptacles, and the point where they exit from the device.

- Only use attachments/accessories specified by the manufacturer.
- Use only with the cart, stand, tripod, bracket, or table specified by the manufacturer or sold with the device. When a cart is used, use caution when moving the cart/device combination to avoid injury from tip-over.



- Unplug this device during lightning storms or when unused for long periods of time.
- Refer all servicing to qualified service personnel. Servicing is required when the device has been damaged in any way, such as power-supply cord or plug is damaged, liquid has been spilled or objects have fallen into the device, the device has been exposed to rain or moisture, does not operate normally, or has been dropped.
- Battery usage CAUTION – To prevent battery leakage which may result in bodily injury, property damage, or damage to the unit:
 - Install all batteries correctly, + and - as marked on the unit.
 - Do not mix batteries (old and new or carbon and alkaline, etc.).
 - Batteries (packed or installed) shall not be exposed to excessive heat such as sunshine, fire or the like.
 - Remove batteries when the unit is not used for a long time.
- The device shall not be exposed to dripping or splashing.
- Do not place any sources of danger on the device (e.g. liquid filled objects, lighted candles).
- Where the MAINS plug or an appliance coupler is used as the disconnect device, the disconnect device shall remain readily operable.

Warning

- Never remove the casing of this device.
- Never lubricate any part of this device.
- Never place this device on other electrical equipment.
- Keep this device away from direct sunlight, naked flames or heat.
- Never look into the laser beam inside this device.
- Ensure that you always have easy access to the power cord, plug, or adaptor to disconnect this device from the power.

Hearing safety



Caution

- To prevent possible hearing damage, do not listen at high volume levels for long periods.

Listen at a moderate volume:

- Using headphones at a high volume can impair your hearing. This product can produce sounds in decibel ranges that may cause hearing loss for a normal person, even for exposures less than a minute. The higher decibel ranges are offered for those that may have already experienced some hearing loss.
- Sound can be deceiving. Over time your hearing 'comfort level' adapts to higher volumes of sound. So after prolonged listening, what sounds 'normal' can actually be loud and harmful to your hearing. To guard against this, set your volume to a safe level before your hearing adapts and leave it there.

To establish a safe volume level:

- Set your volume control at a low setting.
- Slowly increase the sound until you can hear it comfortably and clearly, without distortion.

Listen for reasonable periods of time:

- Prolonged exposure to sound, even at normally 'safe' levels, can also cause hearing loss.
 - Be sure to use your equipment reasonably and take appropriate breaks.
- Be sure to observe the following guidelines when using your headphones.**
- Listen at reasonable volumes for reasonable periods of time.
 - Be careful not to adjust the volume as your hearing adapts.
 - Do not turn up the volume so high that you can't hear what's around you.
 - You should use caution or temporarily discontinue use in potentially hazardous situations.
 - Do not use headphones while operating a motorized vehicle, cycling, skateboarding, etc.; it may create a traffic hazard and is illegal in many areas.

2 Notice

Any changes or modifications made to this device that are not expressly approved by WOOX Innovations may void the user's authority to operate the equipment. Your product is designed and manufactured with high quality materials and components, which can be recycled and reused. Never dispose of your product with other household waste. Please inform yourself about the local rules on the separate collection of electrical and electronic products and batteries. The correct disposal of these products helps prevent potentially negative consequences on the environment and human health. Your product contains batteries, which cannot be disposed of with normal household waste. Please inform yourself about the local rules on separate collection of batteries. The correct disposal of batteries helps prevent potentially negative consequences on the environment and human health. Please visit www.recycle.philips.com for additional information on a recycling center in your area.

Environmental information
All unnecessary packaging has been omitted. We have tried to make the packaging easy to separate into three materials: cardboard (box), polystyrene foam (buffer) and polyethylene (bags, protective foam sheet.) Your system consists of materials which can be recycled and reused if disassembled by a specialized company. Please observe the local regulations regarding the disposal of packaging materials, exhausted batteries and old equipment.

Be responsible Respect copyrights

This item incorporates copy protection technology that is protected by U.S. patents and other intellectual property rights of Rovi Corporation. Reverse engineering and disassembly are prohibited.

Bluetooth

The Bluetooth® word mark and logos are registered trademarks owned by Bluetooth SIG, Inc. and any use of such marks by WOOX Innovations is under license.

HDMI

HDMI and HDMI logo, and High-Definition Multimedia Interface are trademarks or registered trademarks of HDMI licensing LLC in the United States and other countries.



'DVD Video' is a trademark of DVD Format/Logo Licensing Corporation.

DivX

ABOUT DIVX VIDEO: DivX® is a digital video format created by DivX, LLC, a subsidiary of Rovi Corporation. This is an official DivX Certified® device that plays DivX video. Visit divx.com for more information and software tools to convert your files into DivX videos. ABOUT DIVX VIDEO-ON-DEMAND: This DivX Certified® device must be registered in order to play purchased DivX Video-on-Demand (VOD) movies. To obtain your registration code, locate the DivX VOD section in your device setup menu. Go to vod.divx.com for more information on how to complete your registration. DivX®, DivX Certified® and associated logos are trademarks of Rovi Corporation or its subsidiaries and are used under license.

DOLBY DIGITAL

Manufactured under license from Dolby Laboratories. "Dolby" and the double-D symbol are trademarks of Dolby Laboratories. This apparatus includes this label:



Made for iPod iPhone iPad

"Made for iPod," "Made for iPhone," and "Made for iPad" mean that an electronic accessory has been designed to connect specifically to iPod, iPhone, or iPad, respectively, and has been certified by the developer to meet Apple performance standards. Apple is not responsible for the operation of this device or its compliance with safety and regulatory standards. Please note that the use of this accessory with iPod, iPhone, or iPad may affect wireless performance. iPod and iPhone are trademarks of Apple Inc., registered in the U.S. and other countries. iPad is a trademark of Apple Inc.

Note

- The type plate is located on the back of the device.

ZH-CN

您可播放标有以下区域码的 DVD 光盘:

DVD 区域码	国家/地区
ALL	中国大陆

支持的光盘格式

- 数字视频光盘 (DVD)
- Video CD (VCD)
- 超级 VCD (SVCD)
- 数字视频光盘 + 可重写 (DVD+RW)
- 压缩光盘 (CD)
- CD-R(W) 上的图片 (Kodak, JPEG) 文件
- CD-R(W) 上的 DivX(R) 光盘:
- DivX 3.11, 4.x 和 5.x

支持的 MP3-CD 格式:

- ISO 9660
- 最大 标题 / 专辑名称: 12 个字符
- 最大 标题数加专辑数: 255.
- 最大 嵌套目录: 8 层.
- 最大 专辑数: 32.
- 最大 MP3 曲目数: 999.
- 支持的 MP3 光盘采样率: 32 千赫, 44.1 千赫, 48 千赫.
- 支持的 MP3 光盘比特率: 32, 64, 96, 128, 192, 256 (kbps).

兼容的 USB 设备:

- USB 闪存 (USB2.0 或 USB1.1)
- USB 闪存播放机 (USB2.0 或 USB1.1)
- 存储卡 (需要额外的读卡器才能用于本装置)

支持的 USB 格式:

- USB 或闪存文件格式: FAT12, FAT16, FAT32 (扇区大小: 512 个字节)
- MP3 位速率 (数据速率): 32-320 Kbps 和可变速速率
- 目录嵌套最多可达 8 层
- 专辑/文件夹数量: 最多 99
- 曲目/标题数量: 最多 999
- ID3 标签 v2.0 或更高版本
- Unicode UTF8 类型的文件名 (最大长度: 32 个字节)

规格

蓝牙版本	V2.1 + EDR
频段	2.4 GHz ~ 2.48 GHz ISM 频段
范围	10 米 (开阔空间)
输出总功率	100 瓦
调谐范围	87.5-108 兆赫
调谐栅	50 千赫
USB 直放版本	2.0 全速
USB 5 伏电源	≤ 500 毫安
光盘直径	12 厘米 / 8 厘米
视频解码	MPEG-1 / MPEG-2 / DivX
交流电源	100-240 伏, 50/60 赫兹
操作功耗	68 瓦
环保节能待机功耗	< 0.5 瓦
尺寸	
- 主装置 (宽 x 高 x 厚)	230 x 195 x 235 毫米
- 音箱 (宽 x 高 x 厚)	142 x 307 x 215 毫米
重量	
- 主装置	2.5 千克
- 音箱	2 x 2.8 千克

1 注意事项

安全

了解这些安全标志



此“闪电标志”表示设备中的未绝缘材料可能导致触电。为了您家中每个人的安全, 请勿卸下产品外壳。“惊叹号”表示需要对某些功能多加注意, 您应仔细阅读附带的说明书以防止出现操作和维护问题。警告: 为减少火灾或触电危险, 此设备应避免淋雨或受潮, 不得将装有液体的物体 (如花瓶) 放在此设备上。注意: 为防止触电, 请完成插入插头。(对于具有极化插头的区域: 为防止触电, 请将宽插头插入宽插槽。)

重要安全说明

- 遵循所有说明。
- 注意所有警告。
- 不要在靠近水的地方使用本设备。
- 只能使用干布进行清洁。
- 不要堵塞任何进风口。按照制造商的说明进行安装。
- 不要在任何热源附近安装, 如散热器、蓄热器、炉具或其它发热设备 (包括功放器)。
- 防止电源线被踩踏或挤压, 特别是在插头、电源插座和设备电源线出口位置。
- 仅使用制造商指定的附件/配件。
- 仅使用制造商指定或随设备销售的手推车、支座、三脚架、支架或桌台。使用手推车时, 请小心移动载有产品的手推车/设备, 以避免翻倒造成伤害。



- 在雷电天气期间或长期不用的情况下, 请拔下本设备的电源插头。
- 所有维修应由合格的维修人员来执行。本设备有任何损坏时, 如电源线或插头损坏、液体泼溅到或物体跌落到设备上、设备淋雨或受潮, 无法正常运行, 或者跌落, 均需要进行维修。
- 电池使用注意事项 – 为防止电池泄漏而造成人身伤害、财产损失或装置损坏, 请:
 - 按照装置上标明的 + 极和 - 极, 正确安装所有电池。
 - 请勿混合使用电池 (旧电池与新电池或碳电池与碱性电池, 等等)。
 - 不可将电池 (电池组或安装的电池) 置于高温环境, 如阳光直射处、明火或类似环境。
 - 若打算长期使用本装置, 应取出电池。
- 切勿将设备暴露于漏水或溅水环境下。
- 不要将任何危险源放在本设备上 (例如装有液体的物体、点燃的蜡烛)。
- 将电源插头或产品耦合器用作断开设备时, 该断开设备应可以随时使用。
- 主插头用作断路装置, 在不使用时应将插头拔掉, 应保证与电网电源完全切断。

警告

- 切勿拆下本设备的外壳。
- 切勿拆本设备的任何部件。
- 切勿将本设备放在其他电气设备上。
- 应让本设备远离明火、热源、明火或烟雾。
- 切勿直视设备内部的激光束。
- 确保始终可轻易地接触到电源线、电源插头或适配器, 以便于将本设备从电源上断开。

听力安全



部件名称 Name of the Parts	有毒有害物质或元素 Hazardous/toxic Substance					
	铅 (Pb, Lead)	汞 (Hg, Mercury)	镉 (Cd, Cadmium)	六价铬 (Chromium 6+)	多溴联苯 (PBB)	多溴二苯醚 (PBDE)
Housing 外壳	0	0	0	0	0	0
Loopspeakers 喇叭单元	0	0	0	0	0	0
PWBs 电路板部件	X	0	0	0	0	0
Accessories (Remote control & cables) 附件 (遥控器、电源线、连接绳)	X	0	0	0	0	0

0: 表示该有害物质在该部件所有均质材料中的含量均符合 SJ/T11363 - 2006 标准规定的限量要求以下。
O: Indicates that this toxic or hazardous substance contained in all of the homogeneous materials for this part is below the limit requirement in SJ/T11363 - 2006.

X: 表示该有害物质至少在该部件的某一均质材料中的含量超出 SJ/T11363 - 2006 标准规定的限量要求。

X: Indicates that this toxic or hazardous substance contained in at least one of the homogeneous materials used for this part is above the limit requirement in SJ/T11363 - 2006.

10 环保使用期限 Environmental Protection Use Period

This logo refers to the period (10 years) during which the toxic or hazardous substances or elements contained in electronic information products will not leak or mutate so that the use of these substances or elements will not result in any severe environmental pollution, any bodily injury or damage to any assets.

This logo refers to the period (10 years) during which the toxic or hazardous substances or elements contained in electronic information products will not leak or mutate so that the use of these substances or elements will not result in any severe environmental pollution, any bodily injury or damage to any assets.

注意

- 为防止可能的听力受损, 请勿长时间使用高音量收听。

以中等音量收听:

- 以高音量使用耳机会损坏您的听力。此产品产生的声音分贝范围可能导致正常人丧失听力, 即使收听不到一分钟。较高的分贝范围适用于已经丧失了部分听力的人。
- 声音是具有欺骗性的。随着时间的过去, 您听力的“舒适级别”会要求较高的音量。因此, 较长时间的收听之后, “正常”的音量实际上可能很大声, 对您的听力有害。要防止此情况发生, 请在您的听力适应之前, 将音量设置到安全级别并保持不变。

要设置安全的音量级别:

- 将音量控制设置为较低设置。
- 慢慢调高声音, 直到可以舒适、清晰地听见而不失真即可。

合理的收听时间:

- 较长时间的收听, 即使是正常的“安全”级别, 也同样会导致听力受损。
- 请确保合理使用设备, 并进行适当的休息。

使用耳机时请确保遵循以下准则。

- 在合理时间内以合理音量收听。
- 听力适应后, 请勿调节音量。
- 请勿将音量调得太高, 从而无法听见周围的声音。
- 在有潜在危险的情况下应谨慎使用或暂停使用。
- 请勿在驾驶机动车、骑自行车、进行体育锻炼等情况下使用耳机, 否则可能会造成交通事故, 而且这在许多地区属于非法行为。

2 注意

如果您用户未经 WOOX Innovations 的明确许可而擅自对此设备进行更改或修改, 则可能导致其无权操作此设备。本产品采用可回收利用的高性能材料和组件制造而成。切勿将本产品与其它生活垃圾一起处理。请自行了解当地关于分类收集电子、电气产品及电池的規定。正确弃置这些产品有助于避免对环境 and 人体健康造成潜在的负面影响。本产品所含的电池不能与一般的生活垃圾一同弃置。请自行了解当地关于分类收集电池的規定。正确弃置电池有助于避免对环境 and 人体健康造成潜在的负面影响。关于您所在地区回收中心的更多信息, 请访问 www.recycle.philips.com。

环境信息

已省去所有不必要的包装。我们努力使包装易于分为三种材料: 纸板 (盒)、泡沫塑料 (缓冲物) 和聚乙烯 (袋、保护性泡沫片)。您的系统包含可回收利用的材料 (如果由专业公司拆卸)。请遵守当地有关包装材料、废电池和旧设备的处理的规定。

Be responsible Respect copyrights

本商品采用版权保护技术, 受美国专利和 Rovi Corporation 的其它知识产权保护。禁止反向工程或反汇编。

Bluetooth

蓝牙® 字样和徽标均为 Bluetooth SIG, Inc. 所有, WOOX Innovations 对这些字样和徽标的任何使用均属合法。

HDMI

HDMI, HDMI 徽标和高清多媒体接口是 HDMI licensing LLC 在美国及其他国家或地区的商标或注册商标。



"DVD Video" 是 DVD Format/Logo Licensing Corporation 的商标。

DivX

关于 DivX 视频: DivX® 是由 Rovi Corporation 的子公司 DivX, LLC 创建的一种数字视频格式。这是通过 DivX Certified® 官方认证的可播放 DivX 视频的設備。有关更多信息以及将文件转换为 DivX 视频的软件工具, 请访问 divx.com。关于 DivX 随选视频: 这款 DivX Certified® 设备必须注册, 才能播放付费的 DivX 视频点播 (VOD) 影片。要获得注册, 请在设备设置菜单中找到 DivX VOD 部分。有关如何完成注册的更多信息, 请转到 vod.divx.com。DivX®, DivX Certified® 及相关徽标是 Rovi Corporation 或其子公司的商标, 并在授权下使用。

DOLBY DIGITAL

在杜比实验室许可下制造。Dolby 和双 D 标志为杜比实验室的注册商标。本装置包括此标签:



Made for iPod iPhone iPad

"Made for iPod", "Made for iPhone" and "Made for iPad" 表示电子附件专为连接 iPod, iPhone 或 iPad 而设计, 并经开发人员认证, 符合 Apple 性能标准。Apple 对该设备的操作及其是否符合安全和法规标准不负任何责任。请注意, 通过 iPod, iPhone 或 iPad 使用该配件可能影响无线性能。iPod 和 iPhone 是 Apple Inc. 在美国和其它国家/地区注册的商标。iPad 是 Apple Inc. 的商标。

注

- 铭牌 (铭牌上的信息包括工作电压和消耗功率) 位于主机背面。使用前请了解铭牌上的相关信息。