



Philips  
Headphones with mic

8.6mm drivers/closed-back  
In-ear

**SHE3705PK**

## Big beats, pumping bass

Compact design with vacuum metalized protection

Ultra small, big bass Philips Vibes in-ear headphones feature oval tube inserts for comfort and vacuum metalized coating for sleek looks with extra protection.

### **Always ready to go**

- Reinforced cable relief enhances durability and connectivity
- Built-in mic switches from music to phone calls

### **Revel in quality sound**

- Big bass and clear sound through efficient drivers
- A perfect in-ear seal blocks out external noise

### **Listen for longer**

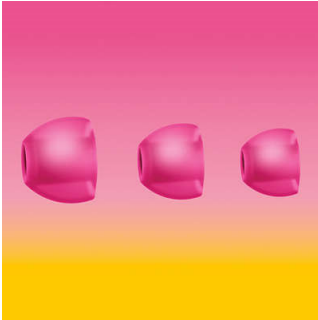
- Oval sound tube insert provides an ergonomic comfort fit
- 3 interchangeable rubber ear caps offer an optimal fit
- Shiny, colorful coating looks sleek and also protects

# PHILIPS

Headphones with mic  
8.6mm drivers/closed-back In-ear

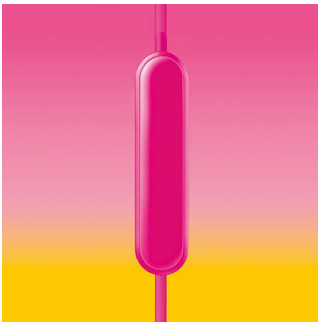
# Highlights

## 3 sizes of ear caps



Ear caps come in a choice of 3 sizes - small, medium and large - for a personalized and perfect fit

## Built-in microphone



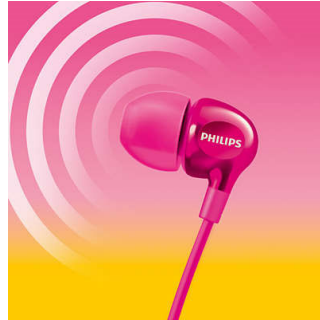
Built-in microphones let you easily switch from music listening to taking phone calls, so you will always stay connected.

## Colorful shiny coating



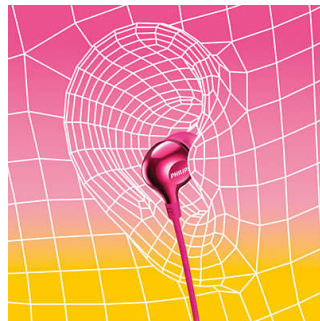
A high quality, glossy and colorful coating creates a sleek look while adding an extra protective surface.

## Efficient drivers



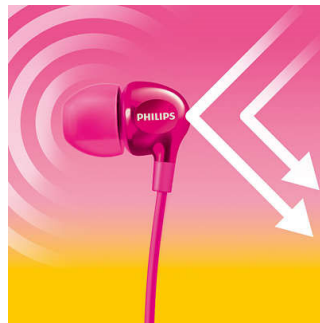
Philips Vibes in-ear headphones house efficient drivers inside a compact design. They fit perfectly while pumping out clear sound and booming bass.

## Oval sound tube



An oval sound tube insert provides ergonomic comfort to fit the true shape of the ear.

## Perfect in-ear fit



Ultra small earphones fit perfectly inside the ear, creating a seal that blocks out external noise.

## Reinforced cable relief

To extend the life of your headphones, a soft rubber relief between them and the cable protects the connection from damage through repeated bending.

SHE3705PK/00

# Specifications

## Sound

- Acoustic system: Closed
- Frequency response: 11–22 000 Hz
- Diaphragm: PET
- Voice coil: Copper
- Speaker diameter: 8.6 mm
- Sensitivity: 105 dB
- Maximum power input: 20 mW
- Impedance: 16 ohm

## Connectivity

- Cable Connection: two parallel, symmetric
- Finishing of connector: chrome-plated
- Cable length: 1.2 m
- Connector: 3.5 mm

## Outer Carton

- Length: 37.5 cm
- Number of consumer packagings: 24
- Width: 17.9 cm
- Gross weight: 1.14 kg
- Height: 13.9 cm
- GTIN: 1 69 25970 70942 9
- Nett weight: 0.312 kg
- Tare weight: 0.828 kg

## Inner Carton

- Length: 18.1 cm
- Number of consumer packagings: 3
- Width: 8.1 cm
- Height: 6 cm
- Nett weight: 0.039 kg
- Gross weight: 0.127 kg
- Tare weight: 0.088 kg
- GTIN: 2 69 25970 70942 6

## Packaging dimensions

- Height: 17.3 cm
- Packaging type: Blister
- Type of shelf placement: Both
- Width: 5 cm
- Depth: 2.7 cm
- Number of products included: 1
- EAN: 69 25970 70942 2
- Gross weight: 0.027 kg
- Nett weight: 0.013 kg
- Tare weight: 0.014 kg

## Accessories

- Eartips: 3 sizes: S, M, L

## Design

- Color: Pink



Issue date 2024-03-08

Version: 3.0.4

EAN: 69 25970 70942 2

© 2024 Koninklijke Philips N.V.  
All Rights reserved.

Specifications are subject to change without notice.  
Trademarks are the property of Koninklijke Philips N.V.  
or their respective owners.

[www.philips.com](http://www.philips.com)