

Always there to help you

Register your product and get support at
www.philips.com/welcome



DVP3650K



User manual

7 사용 설명서

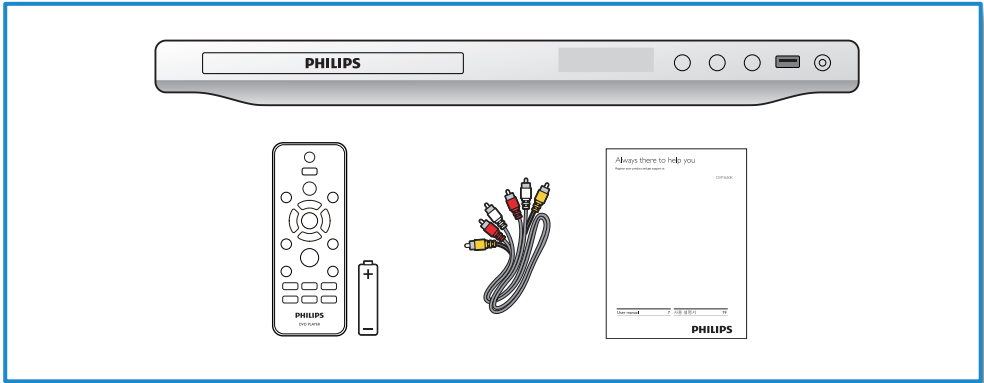
19

PHILIPS

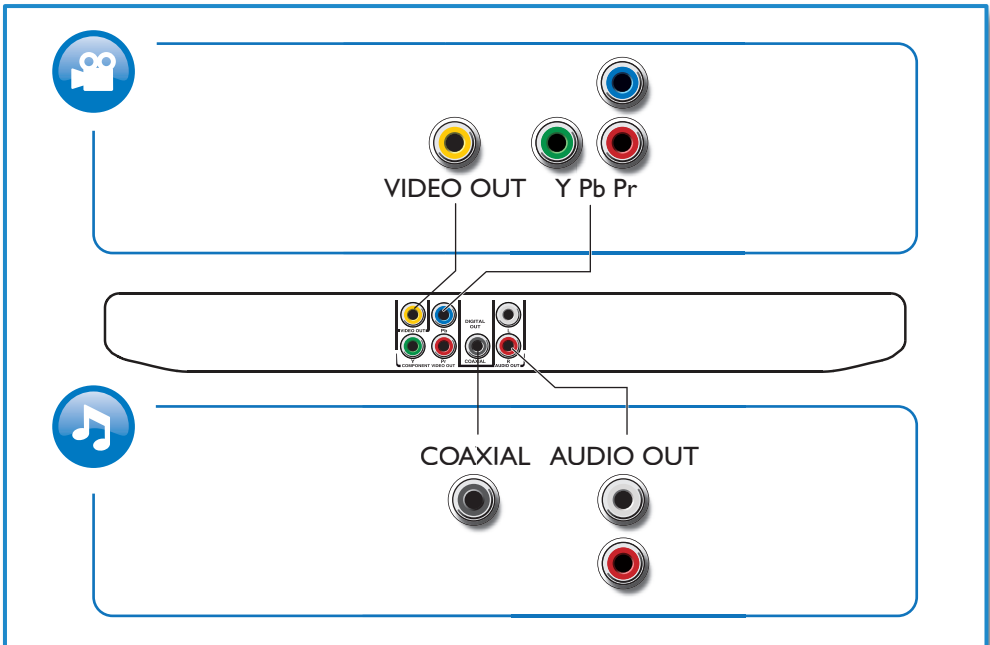


EN Before you connect this DVD player, read and understand all accompanying instructions.

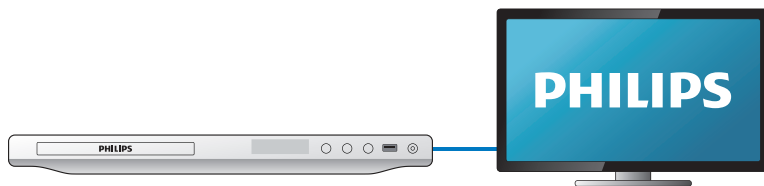
KO DVD 플레이어를 연결하기 전에 관련 지침을 모두 읽고 숙지하여 주십시오.



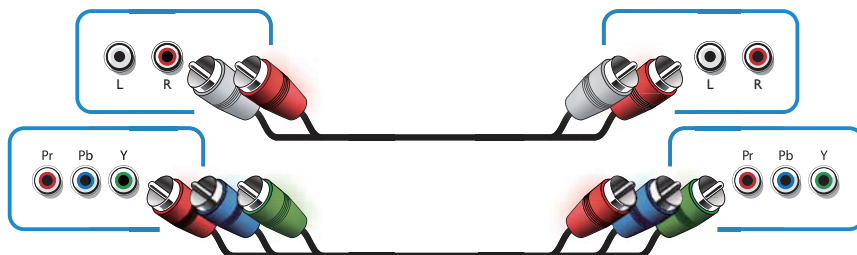
1



2



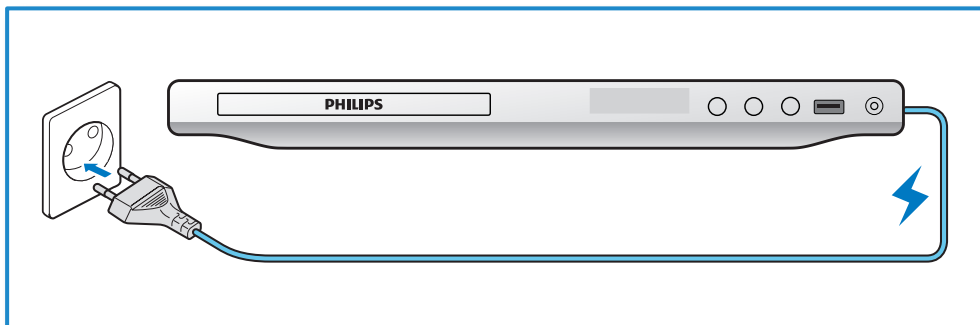
Pr PbY + AUDIO OUT



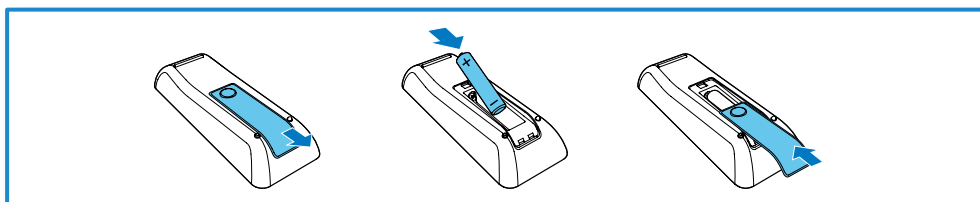
VIDEO OUT + AUDIO OUT



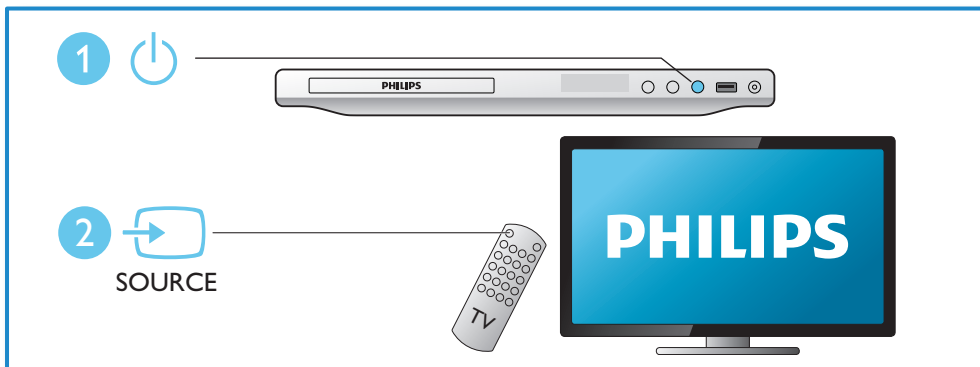
3



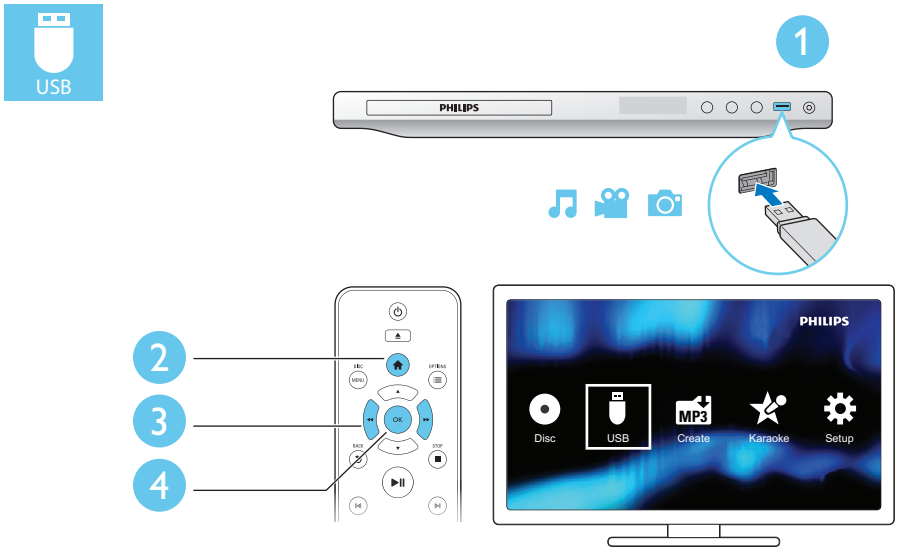
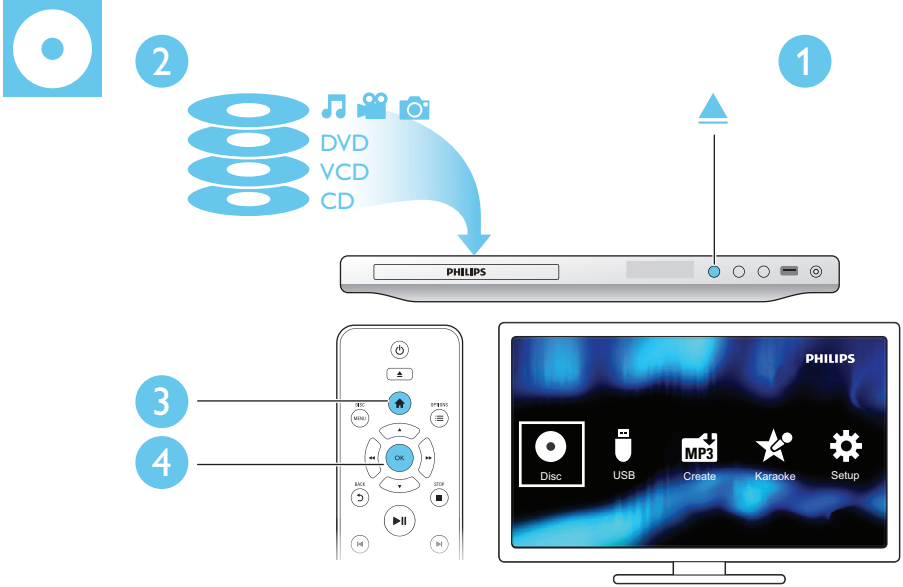
4



5



6



Contents

1	Hookup and play	2-6
----------	------------------------	-----

2	Use your DVD player	8
	Basic play control	8
	Video options	9
	Play a musical slideshow	9
	Repeat play	9
	Skip play	9
	DivX videos	10
	Record audio files from CD to USB	10
	Karaoke	10

3	Change settings	11
	General (sleep, standby...)	11
	Picture	12
	Sound	12
	Preference (languages, parental control...)	12

4	Software update	13
----------	------------------------	----

5	Specifications	14
----------	-----------------------	----

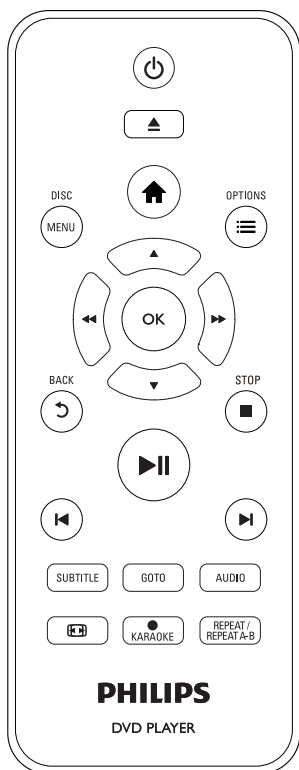
6	Troubleshooting	15
----------	------------------------	----

7	Safety and important notice	16
----------	------------------------------------	----

2 Use your DVD player

Congratulations on your purchase, and welcome to Philips! To fully benefit from the support that Philips offers, register your product at www.philips.com/welcome.

Basic play control



During play, press the following buttons to control the player:

Button	Action
	Turn on the player, or switch to standby.
	Open or close the disc compartment.
	Access the home menu.
DISC MENU	Access or exit the disc menu.
	Access more options during video play.
	Navigate the menus. Slow forward or backward. Press repeatedly to change a search speed.
	Navigate the menus. Fast forward or backward. Press repeatedly to change a search speed.
OK	Confirm a selection or entry.
	Return to a previous display menu.
	Stop play.
	Start, pause or resume play.
	Skip to the previous or next track, chapter or file.
SUBTITLE	Select a subtitle language.
GOTO	Skip to a title, a chapter or a track.
AUDIO	Select an audio language or channel.
	Fit the picture display to the TV screen. Zoom the picture in or out.
	Record Karaoke onto a USB storage device.
REPEAT/REPEAT A-B	Select a repeat play option.

Video options

During video play, press **≡** **OPTIONS** to access the following options.

- **[Info]**: Display the current play information.
- **[PBC]**: Display or skip the content menu for VCD and SVCD.
- **[Aspect ratio]**: Select a picture display format to fit the TV screen.
- **[Volume]**: Change a volume level.
- **[Angle]**: Select a camera angle from which video is viewed.
- **[Microphone]**: Turn on or off microphone sound output.
- **[Karaoke]**: Change the volume level and echo level of microphone input, and the key level of music.
- **[Vocal]**: Select a Karaoke audio mode, or turn off original vocals.

Play a musical slideshow

Play music and pictures simultaneously to create a musical slideshow.

- 1 From a disc or connected USB storage device, play a music file.
- 2 Press **▲▼** to navigate to the picture files.
- 3 Select a picture from the same disc or USB, and press **OK** to start slideshow.
- 4 Press **■** to stop slideshow.
- 5 Press **■** again to stop music play.

Control photo play

During a photo slideshow, use the remote control to control the play.

Button	Action
▲▼	Rotate a picture horizontally/vertically.
◀▶	Rotate a picture anti-clockwise/clockwise.

≡	Access to select [Color] to display a picture in color or black and white.
OPTIONS	Access to select [Photo preview] to display pictures in thumbnail.
Ⓜ	Zoom in or out of a photo. Play pauses in zoom mode.
OK	Start or resume a play.
■	Stop a play.

Repeat play

During play, press **REPEAT/REPEAT A-B** repeatedly to select a repeat play option.

- Repeat the current title, chapter, or track.
- Repeat all the contents on a disc or a USB storage device.
- Repeat play for a specific section.

To Repeat play for a specific section

- 1 Press **REPEAT/REPEAT A-B** repeatedly to select **↻A** as a start point.
- 2 Press **REPEAT/REPEAT A-B** again to select **↻AB** as an end point.
 - ↳ The repeat play of the marked section starts.
- 3 To cancel repeat play, press **REPEAT/REPEAT A-B** until **[Off]** is displayed.

Note

- Repeat play of the marked section is only possible within a title or track.

Skip play

You can skip play to a specific title, chapter or track.

- 1 During play, press **GOTO**.
 - ↳ An input field bar is displayed, and "0" blinks.

- 2 Press ▲▼ to select a digit as a title, chapter; or track number.
- 3 After a digit is selected, press ◀▶/▶▶ to change a digit position.
- 4 If necessary, repeat step 2 and 3 to complete the input of a title, chapter; or track number.
- 5 Press **OK**.
 - ↳ The play skips to the selected title, chapter or track.

DivX videos

You can play DivX videos from a disc or a USB storage device.

VOD code for DivX

- Before you purchase DivX videos and play them on this player, go to vod.divx.com to register this player using the DivX VOD code.
- Display the DivX VOD code: press **▲**, and select **[Setup] > [General] > [DivX(R) VOD Code]**.

DivX subtitles

- Press **SUBTITLE** to select a language.
- If subtitles are not displayed correctly, change the character set that supports DivX subtitles. Select a character set: press **▲**, and select **[Setup] > [Preference] > [DivX Subtitle]**.

Character set	Languages
[Standard]	English, Albanian, Danish, Dutch, Finnish, French, Gaelic, German, Italian, Kurdish (Latin), Norwegian, Portuguese, Spanish, Swedish and Turkish
[Korean]	Korean

Note

- To use the subtitles, make sure that the subtitle file has the same name as the DivX video file name. For example, if the DivX video file is named "movie.avi", save the subtitle file as "movie.srt", or "movie.sub".
- This player can play subtitle files in the following formats: .srt, .sub, .txt, .ssa, and .smi.

Record audio files from CD to USB

You can record audio files from an audio CD to a USB storage device. Audio files are recorded in .mp3 format.

- 1 Connect a USB storage device to this player.
- 2 Load a disc, and start disc play.
- 3 Press **▲**, and select **[Create MP3]**, and then press **OK**.
- 4 Follow the on-screen instructions to complete an recording.
 - ↳ A new folder is automatically created in the USB storage device to store all the recorded MP3 files.

Note

- During recording, do not press any button.
- DTS CDs and copy-protected CDs cannot be converted.
- Write-protected or password-protected USB devices cannot be used to store MP3 files.

Karaoke

- 1 Connect a microphone (not supplied) to the **MIC** connector on this player.
- 2 Press **▲** to display the home menu.
- 3 Select **[Karaoke]**, and press **OK**.
 - ↳ The Karaoke menu is displayed.

4 Select **[Microphone]** > **[On]**, and press **OK** to turn on the microphone sound output.

5 Play a disc, and then sing through the microphone.

Set up Karaoke via the Karaoke menu

- **[Microphone]**: Turn on or off microphone sound output.
- **[Mic Volume]**: Change microphone volume.
- **[Echo]**: Change the echo level.
- **[Karaoke Scoring]**: Select a difficulty level to score your singing. After a song ends, a score is given.
- **[Karaoke Idol]**: Have a Karaoke contest with your friends. Follow the on-screen instructions to start the contest.
- **[Key Shift]**: Change the key level of music.
- **[Vocal]**: Select a Karaoke audio mode, or turn off original vocals.

Record your songs

You can record your own songs onto a USB storage device. The recorded songs are saved as .MP3 files.

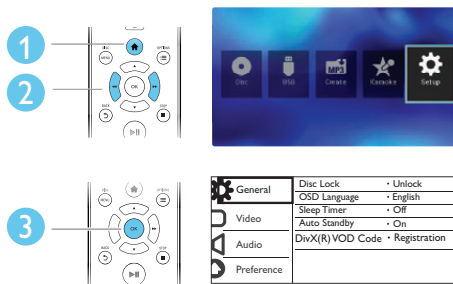
- 1 Insert a USB storage device.
- 2 Press **● KARAOKE**.
- 3 Follow the on-screen instructions to make a setting, and press **OK** to start recording.
 - ↳ The recording stops at the end of the song.
 - To exit the recording, press **● KARAOKE** again.

Note

- Make sure that the USB storage device has enough memory remaining.
- Neither DTS discs nor copy-protected discs can be recorded.

3 Change settings

This section helps you change the settings of this player.



Note

- You cannot change a menu option that is grayed out.
- To access **[Preference]**, stop the disc play.
- To return to the previous menu, press **↶**. To exit the menu, press **⏠**.

General (sleep, standby...)

- 1 Press **⏠**.
- 2 Select **[Setup]** > **[General]** to access the general setup options.
 - **[Disc Lock]**: Lock or unlock a disc for play. To play a locked disc, you need to input your password: press **▲▼** to enter a digit, and press **◀▶** to change a digit position. The default password is "136900".
 - **[OSD Language]**: Select a language for on-screen menu.
 - **[Sleep Timer]**: Set a period of time for this player to switch automatically to standby mode from play.
 - **[Auto Standby]**: Enable or disable auto standby. If enabled, this player switches automatically to standby after

15 minutes of inactivity (for example, in pause or stop mode).

- **[DivX(R) VOD Code]:** Display the DivX® registration code and deregistration code.

Picture

- 1 Press **▲**.
- 2 Select **[Setup] > [Video]** to access the video setup options.
 - **[TV System]:** Select a TV system that matches your TV. By default, this setting matches the common TVs in your country.
 - **[Aspect ratio]:** Select a picture display format to fit the TV screen.
 - **[Progressive]:** Turn on or off the progressive scan mode. If a progressive scan TV is connected to this player, turn on the progressive scan mode.
 - **[Picture Setting]:** Select a predefined color setting, or customize a setting.

Note

- To achieve progressive scan pictures, make sure that your TV supports the progressive scan feature, and your TV is connected to this player through the **Y/Pb/Pr** connectors.

Sound

- 1 Press **▲**.
- 2 Select **[Setup] > [Audio]** to access the audio setup options.
 - **[Analogue Output]:** Select an audio format for sound output when this player is connected through the **AUDIO OUT L/R** connectors.
 - **[Digital Audio]:** Select an audio format for sound output when this player is

connected through the **COAXIAL** connector.

- **[Digital Output]** - Select a type of digital output: **[Off]** - Disable digital output; **[All]** - Support multi-channel audio formats; **[PCM Only]** - Downmix to two-channel audio signal.
- **[LPCM Output]** - Select a LPCM (Linear Pulse Code Modulation) output sampling rate. The higher the sampling rate, the better the sound quality. **[LPCM Output]** is enabled only when **[PCM Only]** is selected under **[Digital Output]**.
- **[Volume]:** Change a volume level.
- **[Sound Mode]:** Select a preset sound effect.
- **[Night Mode]:** Select quiet or full dynamic sound. Night mode decreases the volume of loud sound and increases the volume of soft sound (such as speech).

Note

- Night mode is only available for Dolby encoded DVD discs.

Preference (languages, parental control...)

- 1 Press **▲**.
- 2 Select **[Setup] > [Preference]** to access the preference setup options.
 - **[Audio]:** Select an audio language for video.
 - **[Subtitle]:** Select a subtitle language for video.
 - **[Disc Menu]:** Select a menu language for a video disc.
 - **[Parental Control]:** Restrict access to discs that are encoded with

ratings. Input "136900" to access the restriction options: When the password field is highlighted, press **OK** to enter an input stage, press **▲▼** to select a digit and press **◀▶** to change a digit position.

- **[PBC]**: Display or skip the content menu for VCD and SVCD.
- **[Password]**: Set or change a password to play a restricted disc. Input "136900" if you do not have a password or if you have forgotten your password
- **[DivX Subtitle]**: Select a character set that supports the subtitle of your DivX video.
- **[Version Info]**: Display the software version for this player.
- **[Default]**: Reset all settings to the factory default, except for the settings for **[Disc Lock]**, **[Parental Control]** and **[Password]**.

Note

- If your preferred language is not available for disc language, audio or subtitle, you can select **[Others]** from the menu options and input 4-digit language code which can be found at the back of this user manual.
- The rating levels are country-dependent. To allow all discs to be played, select **[8 Adult]**.

4 Software update

Note

- Power supply must not be interrupted during software update.

To check for updates, compare the current software version of this player with the latest software version (if available) at the Philips website.

- 1 Press **▲**.
- 2 Select **[Setup]** > **[Preference]** > **[Version Info]**, and then press **OK**.
- 3 Write down the model name and the software version number.
- 4 Visit www.philips.com/support to check for the latest software version, using the model name and software version number.
- 5 Refer to the upgrade instructions given on the website to complete the software update.

5 Specifications



Note

- Specifications are subject to change without notice

Region code

This player can play discs with the following region code.

DVD region code	Countries
	Asia Pacific, Taiwan, Korea

Playable media

- DVD, DVD-Video, VCD, SVCD, Audio CD
- DVD+R/+RW, DVD-R/-RW, DVD+R/-R DL (Dual Layer), CD-R/-RW (maximum 299 folders and 648 files)
- USB storage device

File format

- Video: avi, .divx, .xvid
- Audio: .mp3, .wma
- Picture: .jpg, .jpeg

USB

- Compatibility: Hi-Speed USB (2.0)
- Class support: USB Mass Storage Class
- File system: FAT16, FAT32, NTFS
- Maximum number of albums/folders: 299
- Maximum number of tracks/titles: 648
- USB port: 5V \pm , 500mA
- Support USB HDD (Hard Disc Drive): an external power source may be needed

Video

- Signal system: PAL, NTSC, Multi
- Composite video output: 1 Vp-p (75 Ohm)
- Component video output: 0.7 Vp-p (75 Ohm)

Audio

- 2-channel analog output
 - Audio Front L&R : 2 Vrms (47k Ohm)
- Digital output: 0.5 Vp-p (75 Ohm)
 - Coaxial

- Sampling frequency:
 - MP3: 22.05 kHz, 24 kHz, 32 kHz, 44.1 kHz, 48 kHz
 - WMA: 44.1 kHz, 48 kHz
- Constant bit rate:
 - MP3: 8 kbps - 320 kbps
 - WMA: 32 kbps - 192 kbps

Main unit

- Dimensions (W x H x D): 310 x 39.5 x 210 (mm)
- Net Weight: 1.0 kg

Power

- Power supply rating: AC 220V~, 60 Hz
- Power consumption: 10 W
- Power consumption in standby mode: <0.5 W

Accessories supplied

- Remote control and one battery
- Audio/Video cables
- User Manual

Laser specification

- Type: Semiconductor laser InGaAlP (DVD), AlGaAs (CD)
- Wave length: 658 nm (DVD), 790 nm (CD)
- Output Power: 7.0 mW (DVD), 10.0 mW (VCD/CD)
- Beam divergence: 60 degrees

6 Troubleshooting



Warning

- Risk of electric shock. Never remove the casing of the player.

To keep the warranty valid, never try to repair the player yourself.

If you have problems using this player, check the following points before you request service. If you still have a problem, register your player and get support at www.philips.com/support.

If you contact Philips, you will be asked for the model and serial number of this player. The model number and serial number are on the back of this player. Write the numbers here:
Model No. _____

Serial No. _____

No picture.

- Refer to the TV user manual for how to select the correct video input channel.
- If you have turned on the progressive scan or changed a TV system setting, switch back to the default setting: 1) Press ▲ to open the disc compartment. 2) Press **DISC MENU** (for progressive scan) or **SUBTITLE** (for TV system).

No sound output from the TV.

- Make sure that the audio cables are correctly connected between this player and the TV.

No sound during DivX video playback.

- The audio codes are not supported.

No audio output from the loudspeakers of the connected external audio device (for example, stereo system, amplifier receiver).

- Make sure that the audio cables or coaxial cable are correctly connected.
- Switch the external audio device to correct audio input source.

Disc cannot be read.

- Make sure that this player supports the disc (see "Specifications" > "Playable media").
- For a recorded disc, make sure that the disc is finalized.

A USB storage device cannot be read.

- Make sure that the format of the USB storage device is compatible with this player (see "Specifications" > "USB").
- Make sure that the file system on the USB storage device is supported by this player (see "Specifications" > "USB").

Files cannot be displayed or read.

- Make sure that the number of files or folders does not exceed the supported limit of this player (maximum 648 files or 299 folders).
- Make sure that this player supports these files (see "Specifications" > "File format").

DivX video files cannot be played.

- Make sure that the DivX video file is complete.
- Make sure that the file extension is correct.
- DRM-protected video files that are stored on a USB flash drive cannot be played through an analog video connection (for example, composite, component, and scart). Transfer the video content onto a supported disc to play these files.

DivX subtitles do not display correctly.

- Make sure that the subtitle file has the same name as the DivX video file.
- Make sure that the subtitle file has an extension name supported by this player (.srt, .sub, .txt, .ssa, or .smi).
- Select the character set that supports the subtitle (see "Use your DVD player" > "DivX videos").

7 Safety and important notice

Read and understand all instructions before you use this DVD player. If damage is caused by failure to follow the instructions, the warranty does not apply.

Safety

Risk of electric shock!

- Never expose the product and accessories to rain or water. Never place liquid containers, such as vases, near the product. If liquids are spilt on or into the product, disconnect it from the power outlet immediately. Contact Philips Consumer Care to have the product checked before use.
- Never place the product and accessories near naked flames or other heat sources, including direct sunlight.
- Never insert objects into the ventilation slots or other openings on the product.
- Where the mains plug or an appliance coupler is used as the disconnect device, it shall remain readily operable.
- Batteries (battery pack or batteries installed) shall not be exposed to excessive heat such as sunshine, fire or the like.
- Disconnect the product from the power outlet before lightning storms.
- When you disconnect the power cord, always pull the plug, never the cable.

Risk of short circuit or fire!

- Before you connect the product to the power outlet, make sure that the power voltage matches the value printed on the back of the product.

- Avoid applying pressure on the power plugs. Loose power plugs can cause arcing or fire.

Risk of injury or damage to the product!

- To avoid exposure to laser radiation, do not disassemble.
- Do not touch the optical lens inside the disc compartment.
- Never place the product or any objects on power cords or on other electrical equipment.
- If the product is transported in temperatures below 5°C, unpack the product and wait until its temperature matches room temperature before connecting it to the power outlet.

Risk of overheating!

- Never install this product in a confined space. Always leave a space of at least four inches around the product for ventilation. Make sure that curtains or other objects never cover the ventilation slots on the product.

Risk of contamination!

- Remove the batteries if flat or if the remote control is not to be used for a long time.
- Batteries contain chemical substances. They should be disposed of properly.

Risk of swallowing batteries!

- The product/remote control may contain a coin type battery, which can be swallowed. Keep the battery out of reach of children at all times!



Care for your product

- Do not insert any objects other than discs into the disc compartment.
- Do not insert warped or cracked discs into the disc compartment.
- Remove discs from the disc compartment if you are not using the product for an extended period of time.
- Only use microfiber cloth to clean the product.

Care of the environment



Your product is designed and manufactured with high quality materials and components, which can be recycled and reused. Never dispose of your product with other household waste. Please inform yourself about the local rules on the separate collection of electrical and electronic products and batteries. The correct disposal of these products helps prevent potentially negative consequences on the environment and human health.

Your product contains batteries, which cannot be disposed of with normal household waste. Please inform yourself about the local rules on separate collection of batteries. The correct disposal of batteries helps prevent potentially negative consequences on the environment and human health.

Please visit www.recycle.philips.com for additional information on a recycling center in your area.

Compliance



This is CLASS II apparatus with double insulation, and no protective earth provided.

Copyright



Be responsible
Respect copyrights

This item incorporates copy protection technology that is protected by U.S. patents and other intellectual property rights of Rovi Corporation. Reverse engineering and disassembly are prohibited.

Trademarks

DIVX
ULTRA™

ABOUT DIVX VIDEO: DivX® is a digital video format created by DivX, LLC, a subsidiary of Rovi Corporation. This is an official DivX Certified® device that plays DivX video. Visit divx.com for more information and software tools to convert your files into DivX videos.

ABOUT DIVX VIDEO-ON-DEMAND: This DivX Certified® device must be registered in order to play purchased DivX Video-on-Demand (VOD) movies. To obtain your registration code, locate the DivX VOD section in your device setup menu. Go to vod.divx.com for more information on how to complete your registration.

DivX®, DivX Ultra®, DivX Certified® and associated logos are trademarks of Rovi

Corporation or its subsidiaries and are used under license.

DivX Ultra® Certified to play DivX® video with advanced features and premium content.



Manufactured under license from Dolby Laboratories.

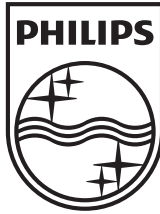
Dolby and the double-D symbol are trademarks of Dolby Laboratories.



'DVD Video' is a trademark of DVD Format/Logo Licensing Corporation.

Language Code

Abkhazian	6566	Inupiaq	7375	Push-to	8083
Afar	6565	Irish	7165	Russian	8285
Afrikaans	6570	Íslenska	7383	Quechua	8185
Amharic	6577	Italiano	7384	Raeto-Romance	8277
Arabic	6582	Ivrit	7269	Romanian	8279
Armenian	7289	Japanese	7465	Rundi	8278
Assamese	6583	Javanese	7486	Samoan	8377
Avestan	6569	Kalaallisut	7576	Sango	8371
Aymara	6589	Kannada	7578	Sanskrit	8365
Azerbaijani	6590	Kashmiri	7583	Sardinian	8367
Bahasa Melayu	7783	Kazakh	7575	Serbian	8382
Bashkir	6665	Kernewek	7587	Shona	8378
Belarusian	6669	Khmer	7577	Shqip	8381
Bengali	6678	Kinyarwanda	8287	Sindhi	8368
Bihari	6672	Kirghiz	7589	Sinhalese	8373
Bislama	6673	Komi	7586	Slovensky	8373
Bokmål, Norwegian	7866	Korean	7579	Slovenian	8376
Bosanski	6683	Kuanyama; Kwanyama	7574	Somali	8379
Brezhoneg	6682	Kurdish	7585	Sotho; Southern	8384
Bulgarian	6671	Lao	7679	South Ndebele	7882
Burmese	7789	Latina	7665	Sundanese	8385
Castellano, Español	6983	Latvian	7686	Suomi	7073
Catalán	6765	Letzeburgesch;	7666	Swahili	8387
Chamorro	6772	Limburgan; Limburger	7673	Swati	8383
Chechen	6769	Lingala	7678	Svenska	8386
Chewa; Chichewa; Nyanja	7889	Lithuanian	7684	Tagalog	8476
中文	9072	Luxembourgish;	7666	Tahitian	8489
Chuang; Zhuang	9065	Macedonian	7775	Tajik	8471
Church Slav; Slavonic	6785	Malagasy	7771	Tamil	8465
Chuvash	6786	Magyar	7285	Tatar	8484
Corsican	6779	Malayalam	7776	Telugu	8469
Česky	6783	Maltese	7784	Thai	8472
Dansk	6865	Manx	7186	Tibetan	6679
Deutsch	6869	Maori	7773	Tigrinya	8473
Dzongkha	6890	Marathi	7782	Tonga (Tonga Islands)	8479
English	6978	Marshallese	7772	Tsonga	8483
Esperanto	6979	Moldavian	7779	Tswana	8478
Estonian	6984	Mongolian	7778	Türkçe	8482
Euskara	6985	Nauru	7865	Türkmen	8475
Ελληνικά	6976	Navaho; Navajo	7886	Twi	8487
Faroese	7079	Ndebele, North	7868	Uighur	8571
Français	7082	Ndebele, South	7882	Ukrainian	8575
Frysk	7089	Ndonga	7871	Urdu	8582
Fijian	7074	Nederlands	7876	Uzbek	8590
Gaelic; Scottish Gaelic	7168	Nepali	7869	Vietnamese	8673
Galléan	7176	Norsk	7879	Volapuk	8679
Georgian	7565	Northern Sami	8369	Walloon	8765
Gikuyu; Kikuyu	7573	North Ndebele	7868	Welsh	6789
Guarani	7178	Norwegian Nynorsk;	7878	Wolof	8779
Gujarati	7185	Occitan; Provençal	7967	Xhosa	8872
Hausa	7265	Old Bulgarian; Old Slavonic	6785	Yiddish	8973
Herero	7290	Oriya	7982	Yoruba	8979
Hindi	7273	Oromo	7977	Zulu	9085
Hiri Motu	7279	Ossetian; Ossetic	7983		
Hrvatski	6779	Pali	8073		
Ido	7379	Panjabi	8065		
Interlingua (International)	7365	Persian	7065		
Interlingue	7365	Polski	8076		
Inuktitut	7385	Português	8084		



Specifications are subject to change without notice
© 2012 Koninklijke Philips Electronics N.V.
All rights reserved.

DVP3650K_61_UM_V2.0

