

Registre seu produto e obtenha suporte em
www.philips.com/welcome

CIC Centro de Informações
ao Consumidor

PHILIPS

Grande SP: 2121-0203
Demais localidades: 0800 701 0203

HTS3551



Foto somente ilustrativa



PHILIPS

Responsabilidade Social

A Philips do Brasil LTDA é uma empresa socialmente responsável, preocupada com a valorização dos seus recursos humanos internos, com o relacionamento correto e justo com a comunidade, com o meio ambiente, com o ambiente de trabalho e com o compromisso de cumprimento das leis.

Sendo assim, realiza suas atividades em conformidade com a norma SA-8000, que se baseia nos princípios das convenções da Organização Internacional do Trabalho, da Convenção das Nações Unidas sobre os Direitos da Criança e na Declaração Universal dos Direitos Humanos.

Informação ambiental

Todo o material desnecessário foi retirado da embalagem do produto.

Nós tentamos fazer as embalagens de modo que elas sejam fáceis de separar em três materiais: caixa de papelão (caixa), calços de isopor e sacos plásticos.

O seu sistema contém materiais que podem ser reciclados e usados novamente se desmontados por uma empresa especializada. Por favor, observe os regulamentos locais relacionados à disposição de materiais da embalagem, baterias e equipamentos, com relação à destinação no seu final de vida.

Prezado Consumidor,

PARABÉNS POR TER ADQUIRIDO ESTE PRODUTO...

E BEM VINDO À FAMÍLIA PHILIPS.

Agradecemos pela sua confiança na Philips e temos a certeza de que seu Sistema de Home Theater lhe trará muitos momentos agradáveis, pois ele é um produto de tecnologia moderna e com muitos recursos. Para usufruir de todo seu potencial, basta ler atentamente este manual e seguir as orientações dadas.

Atenciosamente,



CUIDADO com o uso de pilhas ou baterias!

- Não descarte as pilhas ou baterias juntamente com o lixo doméstico.
- O descarte não controlado de pilhas e baterias prejudica o meio ambiente e a saúde humana.
- Para contribuir com o meio ambiente e com a sua saúde a Philips receberá nos postos de serviço técnico as pilhas ou baterias fornecidas com seus produtos após o uso e fará o descarte gratuitamente.
- Para evitar vazamentos nas pilhas ou baterias, o que pode resultar em danos pessoais e materiais ou ao produto: remova as pilhas quando não utilizar o controle remoto por um longo período; não misture as pilhas (antigas com novas ou de zinco-carbono com alcalinas, etc); não deixe o controle remoto exposto a altas temperaturas.

Em caso de dúvida ou consulta, favor ligar para a linha verde (0+xx+92) 3652-2525. A Philips do Brasil LTDA e o meio ambiente agradecem sua colaboração.

Contents

1 Help and support	2
FAQs	2
Contact Philips	2
2 Notice	2
Copyright	2
Compliance	2
Mains fuse (UK only)	2
Open source software	3
Trademarks	3
3 Important	4
Safety	4
Care for your product	5
Care of the environment	5
4 Your home theater	6
Main unit	6
Remote control	6
5 Connect your home theater	8
Speakers	8
Connectors	9
Connect to TV	10
Connect audio from TV and other devices	11
Internet	12
6 Use your home theater	13
Choose sound	13
Discs	14
USB storage devices	16
DivX	16
Audio, video, and picture options	17
Radio	18
MP3 player	19
Karaoke	19
EasyLink	20
7 Change settings	21
Picture	21
Sound	22
Language	22
Parental control	23
Energy saving	23
Apply factory settings	24
8 Update software	24
Check software version	24
Update software through the Internet	24
Update software through USB	25
9 Product specifications	26
10 Troubleshooting	29
11 Index	30

1 Help and support

Find answers to many frequently answered questions (FAQs) on your product at www.philips.com.

FAQs

If you have a problem, refer to the frequently asked questions (FAQs) for this home theater at www.philips.com/support.

If you still need help, contact Philips Consumer Care in your country.



Warning

- Do not attempt to repair your home theater yourself. This may cause severe injury, irreparable damage to your home theater, or void your warranty.

Contact Philips

If you contact Philips, you will be asked for the model and serial number of your product. The model number and serial number are on the back or bottom of your product. Note the numbers before you call Philips:

Model No. _____

Serial No. _____

2 Notice

This section contains the legal and trademark notices.

Copyright



**Be responsible
Respect copyrights**

This item incorporates copy protection technology that is protected by U.S. patents and other intellectual property rights of Rovi Corporation. Reverse engineering and disassembly are prohibited.

Copyright in the UK

Recording and playback of material may require consent. See Copyright Act 1956 and The Performers Protection Acts 1958 to 1972.

Compliance



This product is in compliance with the essential requirements and other relevant provisions of Directives 2006/95/EC (Low Voltage), 2004/108/EC (EMC).

Mains fuse (UK only)

This information applies only to products with a UK mains plug.

This product is fitted with an approved molded plug. If you replace the fuse, use one with:

- the ratings shown on the plug,
- a BS 1362 approval, and
- the ASTA approval mark.

Contact your dealer if you are not sure about what type of fuse to use.

Caution: To conform with the EMC directive (2004/108/EC), do not detach the plug from the power cord.

Open source software

Philips Electronics Singapore Pte Ltd hereby offers to deliver, upon request, a copy of the complete corresponding source code for the copyrighted open source software packages used in this product for which such offer is requested by the respective licenses. This offer is valid up to three years after product purchase to anyone in receipt of this information. To obtain source code, please contact open.source@philips.com. If you prefer not to use email or if you do not receive confirmation receipt within a week after mailing to this email address, please write to "Open Source Team, Philips Intellectual Property & Standards, P.O. Box 220, 5600 AE Eindhoven, The Netherlands". If you do not receive timely confirmation of your letter, please email to the email address above. The texts of the licenses and acknowledgements for open source software used in this product are included on a separate leaflet.



Java and all other Java trademarks and logos are trademarks or registered trademarks of Sun Microsystems, Inc. in the United States and/or other countries.



Manufactured under license under U.S. Patent #'s: 5,451,942; 5,956,674; 5,974,380; 5,978,762; 6,226,616; 6,487,535; 7,392,195; 7,272,567; 7,333,929; 7,212,872 & other U.S. and worldwide patents issued & pending. DTS and the Symbol are registered trademarks, & DTS-HD, and DTS-HD Master Audio | Essential and the DTS logos are trademarks of DTS, Inc. Product includes software. © DTS, Inc. All Rights Reserved.

Trademarks



"Blu-ray Disc", "Blu-ray" and "Blu-ray Disc" logo are trademarks of Blu-ray Disc Association.



BONUSVIEW™

'BD LIVE' and 'BONUSVIEW' are trademarks of Blu-ray Disc Association.



'DVD Video' is a trademark of DVD Format/Logo Licensing Corporation.

x.v.Colour

'x.v.Colour' is a trademark of Sony Corporation.



Manufactured under license from Dolby Laboratories. Dolby and the double-D symbol are trademarks of Dolby Laboratories.



DivX®, DivX Certified®, DivX Plus™ HD and associated logos are trademarks of DivX, Inc. and are used under license.

ABOUT DIVX VIDEO: DivX® is a digital video format created by DivX, Inc. This is an official DivX Certified® device that plays DivX video. Visit divx.com for more information and software tools to convert your files into DivX video.

ABOUT DIVX VIDEO-ON-DEMAND: This DivX Certified® device must be registered in order to play purchased DivX Video-on-Demand (VOD) movies. To obtain your registration code, locate the DivX VOD section in your device setup menu. Go to vod.divx.com for more information on how to complete your registration.

HDMI, the HDMI logo, and High-Definition Multimedia Interface are trademarks or registered trademarks of HDMI licensing LLC in the United States and other countries.



3 Important

Read and understand all instructions before you use your home theater. If damage is caused by failure to follow instructions, the warranty does not apply.

Safety

Risk of electric shock or fire!

- Never expose the product and accessories to rain or water. Never place liquid containers, such as vases, near the product. If liquids are spilt on or into the product, disconnect it from the power outlet immediately. Contact Philips Consumer Care to have the product checked before use.
- Never place the product and accessories near naked flames or other heat sources, including direct sunlight.
- Never insert objects into the ventilation slots or other openings on the product.
- Where the mains plug or an appliance coupler is used as the disconnect device, the disconnect device shall remain readily operable.
- Disconnect the product from the power outlet before lightning storms.
- When you disconnect the power cord, always pull the plug, never the cable.

Risk of short circuit or fire!

- Before you connect the product to the power outlet, ensure that the power voltage matches the value printed on the back or bottom of the product. Never connect the product to the power outlet if the voltage is different.

Risk of injury or damage to the home theater!

- For wall-mountable products, use only the supplied wall mount bracket. Secure the wall mount to a wall that can support the combined weight of the product and the wall mount. Koninklijke Philips Electronics N.V. bears no responsibility for improper wall mounting that results in accident, injury or damage.
- For speakers with stands, use only the supplied stands. Secure the stands to the speakers tightly. Place the assembled stands on flat, level surfaces that can support the combined weight of the speaker and stand.

- Never place the product or any objects on power cords or on other electrical equipment.
- If the product is transported in temperatures below 5°C, unpack the product and wait until its temperature matches room temperature before connecting it to the power outlet.
- Visible and invisible laser radiation when open. Avoid exposure to beam.
- Do not touch the disc optical lens inside the disc compartment.
- Parts of this product can be made of glass. Handle with care to avoid injury and damage.

Risk of overheating!

- Never install this product in a confined space. Always leave a space of at least four inches around the product for ventilation. Ensure curtains or other objects never cover the ventilation slots on the product.

Risk of contamination!

- Do not mix batteries (old and new or carbon and alkaline, etc.).
- Remove batteries if they are exhausted or if the remote control is not to be used for a long time.
- Batteries contain chemical substances, they should be disposed of properly.

Risk of swallowing batteries!

- The product/remote control may contain a coin type battery, which can be swallowed. Keep the battery out of reach of children at all times!

Care for your product

- Do not insert any objects other than discs into the disc compartment.
- Do not insert warped or cracked discs into the disc compartment.
- Remove discs from the disc compartment if you are not using the product for an extended period of time.
- Use only microfiber cloth to clean the product.

Care of the environment



Your product is designed and manufactured with high quality materials and components, which can be recycled and reused.



When this crossed-out wheeled bin symbol is attached to a product it means that the product is covered by the European Directive 2002/96/EC. Please inform yourself about the local separate collection system for electrical and electronic products.

Please act according to your local rules and do not dispose of your old products with your normal household waste.

Correct disposal of your old product helps to prevent potential negative consequences for the environment and human health.



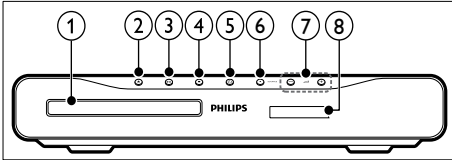
Your product contains batteries covered by the European Directive 2006/66/EC, which cannot be disposed with normal household waste.

Please inform yourself about the local rules on separate collection of batteries because correct disposal helps to prevent negative consequences for the environmental and human health.

4 Your home theater

Congratulations on your purchase, and welcome to Philips! To fully benefit from the support that Philips offers, register your home theater at www.philips.com/welcome.

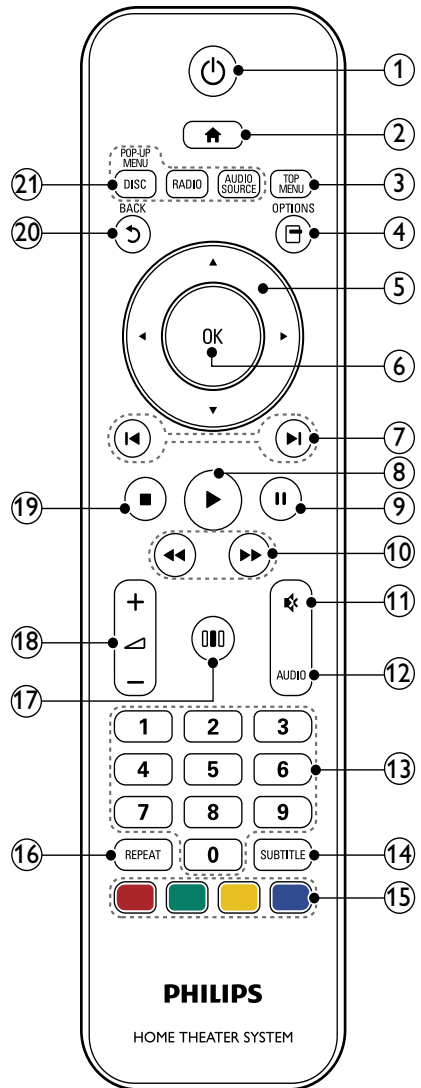
Main unit



- ① Disc compartment
- ② ▲ (Open/Close)
Open or close the disc compartment, or eject the disc.
- ③ ▶|| (Play/Pause)
Start, pause or resume play.
- ④ ■ (Stop)
Stop play.
- ⑤ ⏻ (Standby-On)
Switch the home theater on or to standby.
- ⑥ SOURCE
Select an audio or video source for the home theater.
- ⑦ ▲/▼ +/-
Increase or decrease volume.
- ⑧ Display panel

Remote control

This section includes an overview of the remote control.



- ① **⏻ (Standby-On)**
- Switch the home theater on or to standby.
 - When EasyLink is enabled, press and hold for at least three seconds to switch all connected HDMI CEC compliant devices to standby.
- ② **🏠 (Home)**
Access the home menu.
- ③ **TOP MENU**
Access the main menu of a disc.
- ④ **☰ (Options)**
Access more play options while playing a disc or a USB storage device.
- ⑤ **Navigation buttons**
- Navigate menus.
 - In radio mode, press left or right to start auto search.
 - In radio mode, press up or down to tune the radio frequency.
- ⑥ **OK**
Confirm an entry or selection.
- ⑦ **⏮ / ⏭ (Previous/Next)**
- Skip to the previous or next track, chapter or file.
 - In radio mode, select a preset radio station.
- ⑧ **▶ (Play)**
Start or resume play.
- ⑨ **⏸ (Pause)**
Pause play.
- ⑩ **⏪ / ⏩ (Fast Backward / Fast Forward)**
Search backwards or forward. Press repeatedly to change the search speed.
- ⑪ **🔇 (Mute)**
Mute or restore volume.
- ⑫ **AUDIO**
Select an audio language or channel.
- ⑬ **Numeric buttons**
Enter values or letters (using SMS style entry).
- ⑭ **SUBTITLE**
Select subtitle language for video.
- ⑮ **Color buttons**
Select tasks or options for Blu-ray discs.
- ⑯ **REPEAT**
- Select or turn off repeat mode.
 - In radio mode, set a radio station.
- ⑰ **🔊 (Sound options)**
Access or exit sound options.
- ⑱ **🔊 +/- (Volume)**
Increase or decrease volume.
- ⑲ **■ (Stop)**
- Stop play.
 - Press and hold for three seconds to open or close the disc compartment, or eject the disc.
- ⑳ **⏮ BACK**
- Return to a previous menu screen.
 - In radio mode, press and hold to erase the current preset radio stations.
- ㉑ **Source buttons**
- **DISC / POP-UP MENU**: Access or exit the disc menu when you play a disc.
 - **RADIO**: Switch to FM radio.
 - **AUDIO SOURCE**: Select an audio input source.

EasyLink controls

With Easylink, you can control your home theater and the TV with the following buttons on your home theater remote control (see 'EasyLink' on page 20).

- **⏻ (Standby-On)**: Press and hold to switch your home theater, TV and the connected devices to standby.
- **▶ (Play)**: When a disc is in the disc compartment, wake up the TV from standby, and then play a disc.

5 Connect your home theater

theater

This section helps you connect your home theater to a TV and other devices.

For information about the basic connections of your home theater and accessories, see the quick start guide. For a comprehensive interactive guide, see www.connectivityguide.philips.com.

Note

- For identification and supply ratings, refer to the type plate at the back or bottom of the product.
- Before you make or change any connections, make sure that all devices are disconnected from the power outlet.

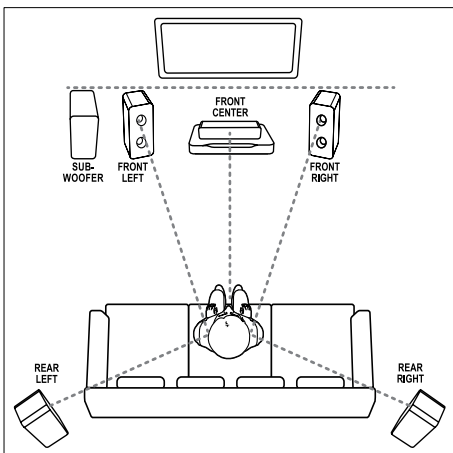
Speakers

Position, connect, and set up your speakers for best surround sound.

Position

Speaker position plays a critical role in setting up a surround sound effect.

For best results, place your speakers and the subwoofer as shown below.



Note

- Surround sound depends on factors such as room shape and size, type of wall and ceiling, windows and reflective surfaces, and speaker acoustics. Experiment with the speaker positions to find the optimum setting for you.

Follow these general guidelines, and then set up your speakers.

- 1 Seating position:**
This is the center of your listening area.
- 2 FRONT CENTER (front center) speaker:**
Place the center speaker directly in front of the seating position, either above or below your TV. Make sure that it is close to your ear height when you are seated.
- 3 FRONT LEFT (front left) and FRONT RIGHT (front right) speakers:**
Place your left and right speakers in the front, and equidistant from the center speaker in an arc, so that all the three speakers are at same distance from your seating position. Place these speakers close to the ear level when you are seated.
- 4 REAR LEFT (rear left) and REAR RIGHT (rear right) speakers:**
Place the rear surround speakers to the left and right side of your seating position, either in line with it or slightly behind it. For best effect, point them towards the seating position and place these speakers above your ear level.
- 5 SUBWOOFER (subwoofer):**
Place the subwoofer to the left or right of the TV.

Connect

Connect your speakers and the subwoofer to your home theater as described in the Quick start guide.

Setup

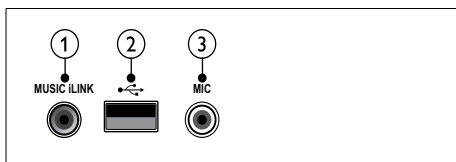
Set up your speakers through the speaker setup menu.

- 1 Connect your speakers and subwoofer as described in the Quick start guide.
- 2 Press **Home** on your home theater remote control, and select **[Setup] > [Audio] > [Speaker Setup]**.
- 3 Enter the distance for each speaker, and then listen to the test tones and change the volume. Experiment a little with the speaker positions to find the ideal setting.

Connectors

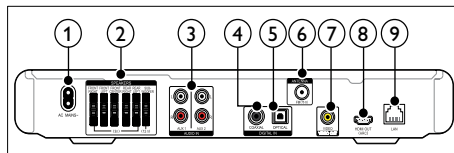
Connect other devices to your home theater.

Front



- 1 **MUSIC iLINK**
Audio input from an MP3 player.
- 2 **USB**
Audio, video or picture input from a USB storage device.
- 3 **MIC**
Audio input from a microphone.

Back connectors



- 1 **AC MAINS~**
Connect to the power supply.
- 2 **SPEAKERS**
Connect to the supplied speakers and subwoofer.
- 3 **AUDIO IN (AUX 1 and AUX 2)**
Connect to an analog audio output on the TV or an analog device.
- 4 **DIGITAL IN-COAXIAL**
Connect to a coaxial audio output on the TV or a digital device.
- 5 **DIGITAL IN-OPTICAL**
Connect to an optical audio output on the TV or a digital device.
- 6 **ANTENNA FM 75Ω**
Signal input from an antenna, cable or satellite.
- 7 **VIDEO OUT-VIDEO**
Connect to the composite video input on the TV.
- 8 **HDMI OUT (ARC)**
Connect to the HDMI input on the TV.
- 9 **LAN**
Connect to the LAN input on a broadband modem or router.

Side right



- 1 **MIC LEVEL**
Press to push out the microphone volume knob.

Connect to TV

Connect your home theater to a TV to watch discs. You can listen to audio from TV programs through your home theater speakers. Use the best quality connection available on your home theater and TV.

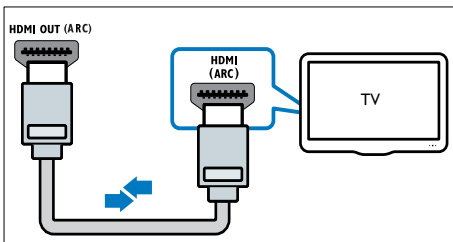
Option 1: Connect to TV through HDMI (ARC)

Best quality video

Your home theater supports HDMI version 1.4 - Audio Return Channel (ARC). For easy and quick setup, connect your home theater to the TV through the HDMI ARC connection.

With HDMI ARC, you do not need an additional audio cable to play audio from TV through your home theater.

- 1 Using a High Speed HDMI cable, connect the **HDMI OUT (ARC)** connector on your home theater to the **HDMI ARC** connector on the TV.
The **HDMI ARC** connector on the TV might be labeled **HDMI IN** or **HDMI**. For details on TV connectors, see the TV user manual.



- 2 On your TV, turn on HDMI-CEC. For details, see the TV user manual.
↳ When you play a disc on your home theater; the video is automatically displayed on TV and the audio is automatically played on the home theater.
- 3 If audio from the TV does not play automatically on your home theater; set up the audio manually (see 'Set up audio for connected devices' on page 12).

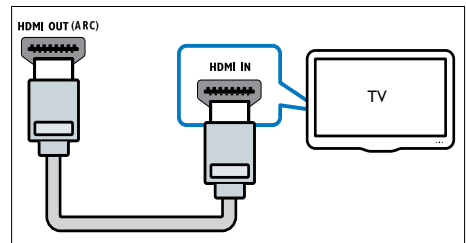
Option 2: Connect to TV through HDMI

Best quality video

If your TV is not HDMI ARC compliant, connect your home theater to the TV through a standard HDMI connection.

With a standard HDMI connection, you need an additional audio cable to play the audio from the TV through your home theater (see 'Connect audio from TV and other devices' on page 11).

- 1 Using a High Speed HDMI cable, connect the **HDMI OUT (ARC)** connector on your home theater to the **HDMI** connector on the TV.
The HDMI connector on the TV might be labeled **HDMI IN**.



- 2 On your TV, turn on HDMI-CEC. For details, see the TV user manual.
↳ When you play a disc on your home theater; the video is automatically displayed on TV and the audio is automatically played on the home theater.
- 3 To play audio from TV programs through your home theater; connect an additional audio cable (see 'Connect audio from TV and other devices' on page 11).
- 4 If audio from the TV does not play automatically on your home theater; set up the audio manually (see 'Set up audio for connected devices' on page 12).

Note

- If your TV has a DVI connector, you can use an HDMI/DVI adapter to connect to TV.

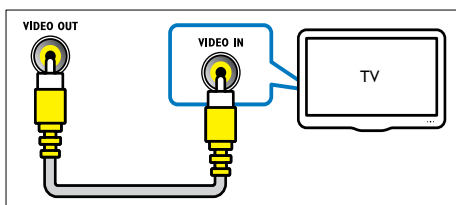
Option 3: Connect to the TV through composite video

Basic quality video

If your TV does not have HDMI connectors, connect your home theater to the TV through a composite connection. A composite connection does not support high-definition video.

With a composite connection, you need an additional audio cable to play the audio from the TV through your home theater (see 'Connect audio from TV and other devices' on page 11).

- Using a composite video cable, connect the **VIDEO** connector on your home theater to the composite video connector on the TV. The composite video connector might be labeled **AV IN**, **VIDEO IN**, **COMPOSITE**, or **BASEBAND**.



- On your TV, switch to the correct video input.

- To play audio from TV programs through your home theater, connect an additional audio cable (see 'Connect audio from TV and other devices' on page 11).

On your home theater, press **AUDIO SOURCE** repeatedly to select the correct audio input.

Connect audio from TV and other devices

Play audio from TV or other devices through your home theater.

Use the best quality connection available on your TV, home theater, and other devices.

Note

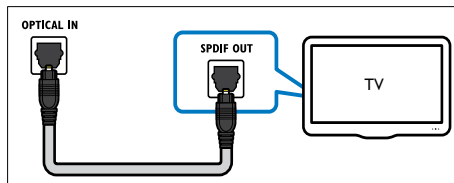
- The audio connections in this user manual are only recommendations. You can use other connections too.
- When your home theater and TV are connected through **HDMI ARC**, an audio connection is not required.

Option 1: Connect audio through a digital optical cable

Best quality audio

Using an optical cable, connect the **OPTICAL** connector on your home theater to the **OPTICAL OUT** connector on the TV or other device.

The digital optical connector might be labeled **SPDIF**, **SPDIF OUT**, or **OPTICAL**.

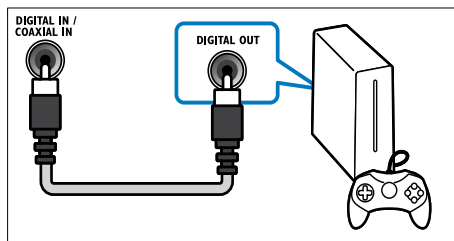


Option 2: Connect audio through a digital coaxial cable

Good quality audio

Using a coaxial cable, connect the **COAXIAL** connector on your home theater to the **COAXIAL/DIGITAL OUT** connector on the TV or other device.

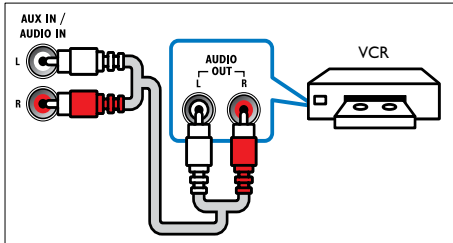
The digital optical connector might be labeled **DIGITAL AUDIO OUT**.



Option 3: Connect audio through analog audio cables

Basic quality audio

Using an analog cable, connect the **AUX** connectors on your home theater to the **AUX** connectors on the TV or other device.



Set up audio for connected devices

When you connect a device to your home theater, check the audio settings.

- 1 On your TV and other devices, turn on HDMI-CEC. For details, see the user manual of the TV and the other device.
- 2 Select 'Amplifier' from the TV speakers menu. For details, see the TV user manual.
- 3 On your home theater, turn on System Audio Control (see 'Control devices' on page 20).
- 4 Map the audio of the TV and other devices to the correct connectors on your home theater (see 'Map the audio input' on page 21).

If the connected device is not HDMI-CEC compliant, press **AUDIO SOURCE** repeatedly on your home theater to select the correct audio input.

Internet

Connect your home theater to the internet and enjoy:

- **BD-Live applications:** Access exclusive services from the BD-Live enabled Blu-ray discs (see 'BD-Live on Blu-ray' on page 15).
- **Software update:** update the home theater software through the network (see 'Update software through the Internet' on page 24).

! Caution

- Before you try to connect the home theater to a computer network, familiarize yourself with the network router, media server software and networking principles. If necessary, read documentation that accompanies the network components. Philips is not responsible for lost, damaged, or corrupt data.

Wired connection

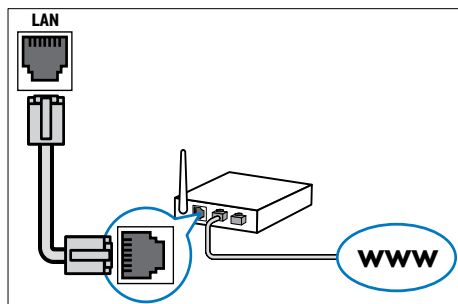
Connect your home theater to your router through a network cable.

What you need

- A network router (with DHCP enabled).
- A network cable (RJ45 straight cable).
- For BD-Live application and software update, make sure that the network router has access to the Internet and the firewall is disabled.

Set up the wired network

Connect your home theater to your router as shown below, and then switch on the devices.



- 1 Connect the home theater to a network router through a wired connection (see 'Wired connection' on page 12).
- 2 Turn on your TV, and switch to the correct source for the home theater.
- 3 Press **Home**.
- 4 Select **[Setup]**, and then press **OK**.
- 5 Select **[Network] > [Network Installation] > [Wired (Ethernet)]**, and then press **OK**.
- 6 Follow the instructions on the TV to complete the setup.
 - ↳ The home theater connects to the internet. If connection fails, select **[Retry]**, and then press **OK**.
- 7 Select **[Finish]**, and then press **OK** to exit.

Check wired network settings

- 1 Press **Home**.
- 2 Select **[Setup]**, and then press **OK**.
- 3 Select **[Network] > [View Network Settings]**, and then press **OK**.
 - ↳ The current network settings are displayed.

6 Use your home theater

This section helps you use the home theater to play media from a wide range of sources.

Before you start

- Make the necessary connections described in the Quick start guide and the user manual.
- Switch the TV to the correct source for the home theater.

Choose sound

This section helps you choose the ideal sound for your video or music.

- 1 Press **Sound options**.
- 2 Press **Navigation buttons** (left/ right) to access the sound options on the display.

Sound settings	Description
SOUND	Select a sound mode.
SURROUND	Select surround sound or stereo sound.
TREBLE	Change the high frequency output.
BASS	Change the low frequency output.
AUD SYNC	Delay the audio to match the video.
ECHO	Add echo to your music.

- 3 Select an option, and then press **OK**.
- 4 Press **BACK** to exit.
 - ↳ If you do not press a button within five seconds, the menu exits automatically.

Sound mode

Select predefined sound modes to suit your video or music.

- 1 Press **III** (**Sound options**).
- 2 Select **SOUND**, and then press **OK**.
- 3 Press the **Navigation buttons** (up/down) to select a setting on the display:
 - **MOVIE**: Enjoy a truly cinematic audio experience, specially enhanced for movies.
 - **MUSIC**: Recreate the original recording environment of your music, in the studio or at a concert.
 - **ORIGINAL**: Experience the original sound of your movies and music, without added sound effects.
 - **NEWS**: Hear every word with optimized speech and clear vocals.
 - **GAMING**: Enjoy thrilling arcade sounds, ideal for action-packed video games or loud parties.
- 4 Press **OK** to confirm.

Surround sound mode

Experience an immersive audio experience with surround sound modes.

- 1 Press **III** (**Sound options**).
- 2 Select **SURROUND**, and then press **OK**.
- 3 Press the **Navigation buttons** (up/down) to select a setting on the display:
 - **AUTO**: Surround sound based on the audio stream.
 - **MULTI-CH**: Immersive multi-channel sound for an enhanced movie experience.
 - **STEREO**: Two-channel stereo sound. Ideal for listening to music.
- 4 Press **OK** to confirm.

Equalizer

Change the high frequency (treble) and low frequency (bass) settings of the home theater.

- 1 Press **III** (**Sound options**).
- 2 Select **TREBLE** or **BASS**, and then press **OK**.
- 3 Press the **Navigation buttons** (up/down) to change the frequency.
- 4 Press **OK** to confirm.

Discs

Your home theater can play DVDs, VCDs, CDs, and Blu-ray discs. It can also play discs that you've made at home, such as CD-R discs of photos and music.

What you need

For audio or 2D video:

- Audio and video connection between your home theater and the TV.
- An audio or a video disc.

Play discs

- 1 Insert a disc into the home theater.
↳ Your TV switches to the correct source and the disc plays automatically.
- 2 If the disc does not play automatically, press **DISC** or select **[play Disc]** in the home menu, and then press **OK**.
- 3 Press the play buttons to control play (see 'Play buttons' on page 14).

Play buttons

Button	Action
Navigation buttons	Navigate menus.
OK	Confirm an entry or selection.
▶ (Play)	Start or resume play.
II	Pause play.
■	Stop play.
◀ / ▶	Skip to the previous or next track, chapter or file.
◀◀ / ▶▶	Fast backwards or fast forwards. Press repeatedly to change the search speed.
Navigation buttons (up/down)	Rotate the picture clockwise or counter-clockwise.
SUBTITLE	Select subtitle language for video.
DISC/POP-UP MENU	Access or exit the disc menu.
☰ (Options)	Access the advanced options when you play your audio, video, or media files (see 'Audio, video, and picture options' on page 17).

For video formats such as DivX:

- To stop play, press **■**.
- To resume the video from where you stopped, press **▶** (Play).
- To play the video from the start, press **OK**.

Skip menu for VCD and SVCD

Display the content menu on VCD and SVCD discs.

- 1 Press **▲** (Home).
- 2 Select **[Setup] > [Preference]**, and then press **OK**.
- 3 Select **[VCD PBC] > [On]**, and then press **OK**.

Note

- To skip the content menu, select **[Off]**.

Synchronize picture and sound

If the audio and video are not synchronized, delay the audio to match the video.

- 1 Press **⏸** (Sound options).
- 2 Select **AUD SYNC**, and then press **OK**.
- 3 Press the **Navigation buttons** (up/down) to synchronize the audio with the video.
- 4 Press **OK** to confirm.

Bonus View on Blu-ray

On Blu-ray discs that support the Bonus View, enjoy extra content, such as a director's commentary, while you watch the main feature. Bonus View is also known as picture-in-picture.

- 1 Enable BonusView (or Picture-In-Picture) in the Blu-ray disc menu.
- 2 While you play the main feature, press **□** (Options).
 - ↳ The options menu is displayed.
- 3 Select **[PIP Selection] > [PIP]**, and then press **OK**.
 - ↳ Depending on the video, PIP option [1] or [2] is displayed.
 - ↳ The picture-in-picture video is displayed in a small window.

- 4 Select **[2nd Audio Language]** or **[2nd Subtitle Language]**, and then press **OK**.
- 5 Select the language, and then press **OK**.

Note

- To turn off the Bonus View, press **□** (Options), select **[PIP Selection] > [Off]**, and then press **OK**.

BD-Live on Blu-ray

On Blu-ray discs with BD-Live content, access additional features, such as internet chats with the director, latest movie trailers, games, wallpaper, and ringtones.

What you need

- a Blu-ray disc with BD-Live content
- an internet connection
- a USB storage device, with at least 1GB of memory

Note

- BD-Live services vary from country to country, and depend on the disc.
- When you use BD-Live, data on the disc and home theater are accessed by the content provider.

Access BD-Live with a USB storage device

- 1 Connect your home theater to the home network and internet (see 'Internet' on page 12).
- 2 Connect the USB storage device to the home theater.
 - The USB storage device is used to store the downloaded BD-Live content.
- 3 Select the BD-Live icon in the disc menu, and then press **OK**.
 - ↳ BD-Live starts to load. The loading time depends on the disc and your internet connection.
- 4 Press the **Navigation buttons** to navigate BD-Live, and then press **OK** to select an item.

Clear memory

If your storage device does not have enough memory for the BD-Live content, clear the memory on the storage device.

- 1 Press **⬆** (**Home**).
- 2 Select **[Setup]**, and then press **OK**.
- 3 Select **[Advanced]** > **[Clear memory]**, and then press **OK**.
 - ↳ This clears the local memory and deletes the BD-Live files that you downloaded on your storage device.

Disable BD-Live

To restrict access to BD-Live, turn on the BD-Live security.

- 1 Press **⬆** (**Home**).
- 2 Select **[Setup]**, and then press **OK**.
- 3 Select **[Advanced]** > **[BD-Live security]** > **[On]**, and then press **OK**.
 - ↳ BD-Live access is restricted.

Note

- You cannot restrict internet access on commercial Blu-ray discs.

USB storage devices

Enjoy pictures, audio and video on a USB storage device.

What you need

- A USB storage device that is formatted for FAT or NTFS file systems, and complies with the Mass Storage Class.
- A USB extension cable, if the USB storage device does not fit into the connector.

Note

- You can use digital cameras connected by USB if they can play the files without using a special computer program.
- To play DivX DRM - protected files from a USB storage device, connect your home theater to a TV through an HDMI cable.

Play files

- 1 Connect the USB storage device to the home theater.
- 2 Press **⬆** (**Home**).
 - ↳ The home menu is displayed.
- 3 Select **[browse USB]**, and then press **OK**.
 - ↳ A content browser is displayed.
- 4 Select a file, and then press **OK**.
- 5 Press the playback buttons to control play (see 'Play buttons' on page 14).

DivX

Play DivX videos from :

- a disc (see 'Discs' on page 14),
- a USB storage device (see 'USB storage devices' on page 16).

Note

- To play DivX DRM protected files from a disc or a USB storage device, connect your home theater to a TV through an HDMI cable.

VOD code for DivX

Before you purchase DivX videos and play them on your home theater, register the home theater on www.divx.com using the DivX VOD code.

- 1 Press **⬆** (**Home**).
- 2 Select **[Setup]**, and then press **OK**.
- 3 Select **[Advanced]** > **[DivX® VOD Code]**, and then press **OK**.
 - ↳ The DivX VOD registration code for your home theater is displayed.

Subtitles

If your video has subtitles in multiple languages, select a subtitle language.

- 1 While playing video, press **SUBTITLE** to select a language.



Note

- Make sure that the subtitle file has the same name as the video file. For example, if the video file is named 'movie.avi', save the subtitle file as 'movie.srt' or 'movie.sub'.
- Your home theater can play subtitle files in the following formats: .srt, .sub, .txt, .ssa, .ass, .smi, and .sami. These files do not appear in the file navigation menu.
- If the subtitles do not appear correctly, change the character set.

Subtitle character set

If the subtitles do not appear correctly, change the character set that supports the DivX subtitle.

- 1 Press **□** (**Options**).
↳ The options menu is displayed.
- 2 Press the **Navigation buttons** to select **[Character Set]**, and then press **OK**.
- 3 Select a character set.

Europe, India, and Russia

Character Set	Language
[Standard]	English, Albanian, Danish, Dutch, Finnish, French, Gaelic, German, Italian, Kurdish (Latin), Norwegian, Portuguese, Spanish, Swedish and Turkish
[Central Europe]	Albanian, Croat, Czech, Dutch, English, German, Hungarian, Irish, Polish, Romanian, Slovak, Slovene and Sorbian
[Cyrillic]	Bulgarian, Belorussian, English, Macedonian, Moldavian, Russian, Serbian and Ukrainian
[Greek]	Greek

Audio, video, and picture options

Use advanced features when you play audio, video, or media files from a disc or a USB storage device.

Audio options

While playing audio, repeat an audio track, a disc, or a folder.

- 1 Press **□** (**Options**) repeatedly to cycle through the following functions:
 - **RPT TRAC / RPT FILE**: Repeat the current track or file.
 - **RPT DISC / RPT FOLD**: Repeat all the tracks on the disc or the folder.
 - **RPT RAND**: Play audio tracks in random order.
 - **RPT OFF**: Turn off the repeat mode.

Video options


While watching video, select options such as subtitles, audio language, time search, and picture settings. Depending on the video source, some options are not available.

- 1 Press **□** (**Options**).
↳ The video options menu appears.
- 2 Press the **Navigation buttons** and **OK** to select and adjust:
 - **[Audio Language]**: Select audio language for video.
 - **[Subtitle Language]**: Select subtitle language for video.
 - **[Info]**: Display information about what is playing.
 - **[Character Set]**: Select a character set that supports the DivX subtitle.
 - **[Time Search]**: Skip to a specific part of the video by entering the time of the scene.
 - **[2nd Audio Language]**: Select the second audio language to play.
 - **[2nd Subtitle Language]**: Select the second subtitle language to play.
 - **[Titles]**: Select a specific title.
 - **[Chapters]**: Select a specific chapter.
 - **[Angle List]**: Select a different camera angle.
 - **[Menus]**: Display the disc menu.
 - **[PIP Selection]**: Display Picture-in-Picture window.

- **[Zoom]:** Zoom into a video scene or picture. Press the **Navigation buttons** (left/right) to select a zoom factor.
- **[Repeat]:** Repeat a chapter or title.
- **[Repeat A-B]:** Mark two points within a chapter or track to repeat play, or turn off the repeat mode.
- **[Picture Settings]:** Select a predefined color setting.

Picture options

While viewing a picture, zoom into the picture, rotate it, add animation to a slideshow, and change the picture settings.



- 1 Press  (**Options**).
↳ The pictures options menu appears.
- 2 Press the **Navigation buttons** and **OK** to select and adjust:
 - **[Rotate +90]:** Rotate the picture 90 degree clockwise.
 - **[Rotate -90]:** Rotate the picture 90 degree counter-clockwise.
 - **[Zoom]:** Zoom into a video scene or picture. Press the **Navigation buttons** (left/right) to select a zoom factor.
 - **[Info]:** Display picture information.
 - **[Duration per slide]:** Select the display speed for each picture in a slide show.
 - **[Slide Animation]:** Select animation for the slide show.
 - **[Picture Settings]:** Select a predefined color setting.
 - **[Repeat]:** Repeat a selected folder.

Slideshows

While playing a video or music, access fun features such as picture and musical slideshows.




Picture slideshows

View a slideshow of your pictures stored in your disc or a USB storage device.

- 1 Select a picture from a disc or USB storage device, and then press **OK**.
- 2 Press  (**Options**).
- 3 Press **Navigation buttons** and **OK** to select the following settings:
 - **[Slide Animation]:** Select an animation for the slideshow.
 - **[Duration per slide]:** Select a display speed for each picture in a slideshow.
- 4 Press  to stop the slideshow.

Musical slideshows

Create a musical slideshow to play music and pictures at the same time.

- 1 Select a music track, and then press **OK**.
- 2 Press  **BACK**, and go to the picture folder.
- 3 Select a picture, and then press **OK** to start the slideshow.
- 4 Press  to stop slideshow.
- 5 Press  again to stop music.

Radio

Listen to FM radio on your home theater, and store up to 40 radio stations.


What you need

- FM antenna.

Note

- AM and digital radio are not supported.
- If no stereo signal is detected, you are prompted to install the radio stations again.
- For the best reception, place the antenna away from the TV or other sources of radiation.

Tune stations

- 1 Connect the FM antenna as described in the Quick start guide.
- 2 Press **RADIO**.
 - ↳ If you have already installed the radio stations, the last channel that you listened to is played.
 - ↳ If you have not installed any radio stations, the message **AUTO INSTALL...** **PRESS PLAY** appears on the display panel. Press  (**Play**).

- 3 Press the following buttons to listen or to change radio stations:

Button	Action
◀ / ▶	Select a preset radio station.
Navigation buttons (left/right)	Search for a radio station.
Navigation buttons (up/down)	Fine tune a radio frequency.
■	Press to stop the installation of radio stations. Press and hold to erase the preset radio station.
REPEAT	Manual: Press once to access program mode, and press again to store the radio station. Automatic: Press and hold for three seconds to reinstall the radio stations.
RADIO	Toggle between the stereo and mono sounds.

Listen to radio

- 1 Press **RADIO**.
 - To listen to a preset station, press ◀ or ▶.
 - To search for a radio station, and then listen, press **Navigation buttons** (left/right).
- 2 Press +/- (**Volume**) to change the volume.

Tuning grid

In some countries, you can toggle the FM tuning grid between 50 kHz and 100 kHz. Switching the tuning grid erases all preset radio stations.

- 1 Press **RADIO**.
- 2 Press ■.
- 3 Press and hold ▶(**Play**) to toggle between 50 kHz or 100 kHz.

MP3 player

Connect your MP3 player to play your audio files or music.

What you need

- An MP3 player.
- An 3.5mm stereo audio cable.

Play music

- 1 Connect the MP3 player to the home theater as described in the Quick start guide.
- 2 Press **AUDIO SOURCE** repeatedly until '**MUSIC I-LINK**' appears on the display panel.
- 3 Press the buttons on the MP3 player to select and play audio files or music.

Karaoke

Play a Karaoke disc on your home theater and sing along with the music.

What you need

- A Karaoke microphone.
- Karaoke discs.



Note

- To prevent loud feedback or unexpected noise, turn the microphone volume to the minimum before you connect the microphone to your home theater.

Play karaoke music

- 1 Connect a karaoke microphone to the **MIC** connector on your home theater.
- 2 Switch your TV to the correct source for your home theater.
- 3 Play a karaoke disc and sing through the microphone.
 - To adjust the echo level, press **000** (**Sound options**), select [**Echo**], and then press **OK**.
 - To adjust the microphone volume, press **MIC LEVEL**, and then turn the volume knob.
 - To adjust the level of the audio source, press ◀ +/- (**Volume**).

EasyLink

The home theater supports Philips EasyLink, which uses the HDMI-CEC (Consumer Electronics Control) protocol. EasyLink-compliant devices that are connected through HDMI can be controlled by a single remote control.

Philips does not guarantee 100% interoperability with all HDMI-CEC devices.

What you need

- HDMI-CEC compliant devices.
- An HDMI connection between the connected devices.

Switch on

- 1 On the TV and other connected devices, turn on the HDMI-CEC operations. For details, see the manual of the TV or other devices.
- 2 Press **⬆** (Home).
- 3 Select **[Setup]**, and then press **OK**.
- 4 Select **[EasyLink]** > **[EasyLink]**, and then press **OK**.
- 5 Select **[On]**, and then press **OK**.

Control devices

Control the home theater and the other connected HDMI-CEC compliant devices with a single remote control.

One-touch play

If you enable One-touch play, the TV automatically switches to the correct channel when you play a disc in your home theater.

One-touch standby

When you press and hold **⏻** (Standby) on the remote control, the home theater and all the connected HDMI-CEC devices (that support one-touch standby) switch to the standby mode.

If one-touch standby is enabled on your home theater, you can switch to standby with the remote control of the TV or other HDMI-CEC devices.

System Audio Control

When you play a device that has its audio output routed to the home theater, the home theater switches to the corresponding audio source automatically.

To use one-touch audio, turn on System Audio Control and follow the instructions on the TV to map connected devices to the audio input connectors of the home theater.

Audio Input Mapping

When you connect a new device to your home theater, map the device to the audio input connector (see 'Map the audio input' on page 21).

Select speaker output

Play the audio from a connected device through your home theater.

- 1 Press **⬆** (Home).
- 2 Select **[Setup]**, and then press **OK**.
- 3 Select **[EasyLink]** > **[System Audio Control]** > **[On]**, and then press **OK**.
- 4 Map the audio output of the HDMI TV and other HDMI-CEC compliant devices to the audio inputs on your home theater.

Note

- To play the audio from the TV speakers, select **[EasyLink]** > **[System Audio Control]** > **[Off]**.

Map the audio input

When you connect an HDMI-CEC device to your TV or your home theater, map the audio of the connected device to your home theater.

- 1 Press **⬆** (Home).
- 2 Select **[Setup]**, and then press **OK**.
- 3 Select **[EasyLink] > [Audio Input Mapping]**, and then press **OK**.
- 4 Follow the instructions on the TV screen to map the audio input of the connected device.

7 Change settings

This section helps you to change the settings of your home theater.



Caution

- Most of the settings are already configured with the best value for your home theater. Unless you have a reason to change a setting, it is best to leave it at the default value.



Note

- You cannot change a setting that is grayed out.
- To return to the previous menu, press **⬅** **BACK**. To exit the menu, press **⬆** (Home).

Picture

Change the picture settings to suit your preferences.



Note

- The best setting is automatically selected for the TV. If you change the setting, make sure that the TV supports the new settings.

Picture settings and format

- 1 Press **⬆** (Home).
- 2 Select **[Setup]**, and then press **OK**.
- 3 Select **[Video]**, and then press **OK**.
- 4 Change the following settings, and then press **OK**:
 - **[TV Display]**: Picture format.
 - **[Picture Settings]**: Predefined color settings.

Picture color

Deep Color recreates the natural world on your TV screen and displays vivid images in over a billion of colors.

If your TV supports Deep Color and is connected to your home theater through an HDMI cable, you can change the Deep Color.

- 1 Press **▲** (Home).
- 2 Select **[Setup]**, and then press **OK**.
- 3 Select **[Video]** > **[HDMI Deep Color]**, and then press **OK**.
- 4 Select the following options, and then press **OK**:
 - **[Auto]**: Automatically select HDMI deep color.
 - **[On]**: View vivid images.
 - **[Off]**: Display standard 24-bit color.

Picture resolution

For HDMI video settings, connect your home theater to the TV through an HDMI cable.

- 1 Press **▲** (Home).
- 2 Select **[Setup]**, and then press **OK**.
- 3 Select **[Video]** > **[HDMI Video]**, and then press **OK**.
- 4 Change the HDMI resolution setting, and then press **OK**.

Sound

Change the sound settings to suit your preference.

HDMI audio

To hear an HDMI audio output from your TV, connect your home theater to the TV through an HDMI cable.

- 1 Press **▲** (Home).
- 2 Select **[Setup]**, and then press **OK**.
- 3 Select **[Audio]** > **[HDMI Audio]**, and then press **OK**.
- 4 Select the following options, and then press **OK**:
 - **[Bitstream]**: Enable bitstream output over HDMI.
 - **[Auto]**: Automatically select the best supported audio format.
 - **[Off]**: Disable audio from the TV.

Night mode

For quiet listening, decrease the volume of loud sounds when you play discs. Night mode is only available for Dolby-encoded DVD and Blu-ray discs.

- 1 Press **▲** (Home).
- 2 Select **[Setup]**, and then press **OK**.
- 3 Select **[Audio]** > **[Night Mode]** > **[On]**, and then press **OK**.

Language

Select a language for the home menu, audio, and subtitles.

Home menu

- 1 Press **▲** (Home).
- 2 Select **[Setup]**, and then press **OK**.
- 3 Select **[Preference]** > **[Menu language]**, and then press **OK**.
- 4 Select a menu language, and then press **OK**.

Disc audio

- 1 Press **▲** (Home).
- 2 Select **[Setup]**, and then press **OK**.
- 3 Select **[Preference]** > **[Audio]**, and then press **OK**.
- 4 Select an audio language for discs, and then press **OK**.

Note

- If your preferred disc language is not available, select **[Other]** from the list, and enter the 4-digit language code found at the end of this user manual.
- If you select a language that is not available on a disc, the home theater uses the default language of the disc.

Disc subtitle

- 1 Press **▲** (Home).
- 2 Select **[Setup]**, and then press **OK**.
- 3 Select **[Preference]** > **[Subtitle]**, and then press **OK**.
- 4 Select a subtitle language for discs, and then press **OK**.

Disc menu

- 1 Press **▲** (Home).
- 2 Select **[Setup]**, and then press **OK**.
- 3 Select **[Preference]** > **[Disc Menu]**, and then press **OK**.
- 4 Select a menu language for discs, and then press **OK**.

Note

- If your preferred disc language is not available, select **[Other]** from the list, and enter the 4-digit language code found at the the end of this user manual.
- If you select a language that is not available on a disc, the home theater uses the default language of the disc.

Parental control

Restrict access to discs that are recorded with ratings.

Password

You can set or change your password to play a restricted disc.

- 1 Press **▲** (Home).
- 2 Select **[Setup]**, and then press **OK**.
- 3 Select **[Preference]** > **[Change Password]**, and then press **OK**.
 - ↳ A change password menu is displayed.
- 4 Follow the instructions on the TV to set or change password.
 - If you do not have a password or you have forgotten, enter **0000**.
- 5 Press **OK**.

Ratings

Some discs are recorded with ratings according to age. You can set up your home theater to play only discs with an age rating lower than your child's age.

- 1 Press **▲** (Home).
- 2 Select **[Setup]**, and then press **OK**.
- 3 Select **[Preference]** > **[Parental Control]**, and then press **OK**.
 - ↳ A message prompts you to enter the password.
- 4 Enter the password with the **Numeric buttons**.
- 5 Select an age rating, and then press **OK**.
 - To play all discs irrespective of the rating, select level **8** or **[Off]**.

Energy saving

Save energy by changing the following settings.

Auto standby

When playing a disc or a USB storage device, automatically switch your home theater to standby if:

- it is in pause or stop mode, and
- no button is pressed for 30 minutes.

- 1 Press **▲** (Home).
- 2 Select **[Setup]**, and then press **OK**.
- 3 Select **[Preference]** > **[Auto Standby]** > **[On]**, and then press **OK**.

Sleep timer

Set timers to switch the home theater to standby after a specified time.

- 1 Press **▲** (Home).
- 2 Select **[Setup]**, and then press **OK**.
- 3 Select **[Preference]** > **[Sleep Timer]**, and then press **OK**.
- 4 Select the duration of the sleep timer.
 - ↳ The sleep timer can be set up to 60 minutes. If the sleep timer is set to **[Off]**, it switches off.
- 5 Press **OK** to activate.
 - ↳ The home theater switches to standby after the specified time.

Screen saver

Automatically switch your home theater to screen saver mode if:

- it is in pause or stop mode, and no button is pressed for 10 minutes.
- 1 Press **▲** (Home).
 - 2 Select **[Setup]**, and then press **OK**.
 - 3 Select **[Preference]** > **[Screen Saver]** > **[On]**, and then press **OK**.

Display panel

Change the brightness of the home theater display panel.

- 1 Press **▲** (Home).
- 2 Select **[Setup]**, and then press **OK**.
- 3 Select **[Preference]** > **[Display Panel]**, and then press **OK**.
- 4 Select the brightness, and then press **OK**.

Apply factory settings

Reset your home theater to the default settings. You cannot reset the parental control settings.

- 1 Press **▲** (Home).
- 2 Select **[Setup]**, and then press **OK**.
- 3 Select **[Advanced]** > **[Restore default settings]**, and then press **OK**.
- 4 Select **[OK]**, and then press **OK**.

8 Update software

To continue to get the best features and support for your home theater, update the software regularly. Compare the version of your current software with the latest version on www.philips.com/support.

Check software version

- 1 Press **▲** (Home).
- 2 Select **[Setup]**, and then press **OK**.
- 3 Select **[Advanced]** > **[Version Info.]**, and then press **OK**.
↳ The software version is displayed.

Update software through the Internet

- 1 Connect your home theater to the network through a wired connection (see 'Set up the wired network' on page 13).
- 2 Press **▲** (Home).
- 3 Select **[Setup]**, and then press **OK**.
- 4 Select **[Advanced]** > **[Software Update]** > **[Network]**.
↳ If an upgrade media is detected, you are prompted to start or cancel the update.
- 5 Follow the instruction on the TV to confirm the update.
↳ When the software update is complete, the home theater automatically switches off and restarts. If it does not, disconnect the power cord for a few seconds and then reconnect it.

Note

- If the home theater cannot connect to the Philips server, press **▲** (Home).
- Select **[Setup]** > **[Network]** > **[Network Installation]** to set up the network.

Update software through USB

What you need

- A USB flash drive, with at least 75MB of memory. The USB flash drive must be FAT or NTFS formatted. Do not use a USB hard drive.
- A computer with Internet access.
- An archive utility that supports the ZIP file format (for example, WinZip® for Microsoft® Windows® or StuffIt® for Macintosh®).

Step 1: Download the latest software

- 1 Connect a USB flash drive to your computer.
- 2 In your web browser, go to www.philips.com/support.
- 3 At the Philips Support website, find your product and locate the **Software and drivers**.
 - ↳ The software update is available as a zip file.
- 4 Save the zip file in the root directory of your USB flash drive.
- 5 Use the archive utility to extract the software update file in the root directory of the USB flash drive.
 - ↳ The files are extracted under the **UPG_ALL** folder of your USB flash drive.
- 6 Disconnect the USB flash drive from your computer.

Step 2: Update the software



Caution

- Before you connect the USB flash drive to your home theater, make sure that there is no disc in the disc compartment, and the disc compartment is closed.

- 1 Connect the USB flash drive to your home theater.
- 2 Switch your TV to the correct source for your home theater.
- 3 Press **▲ (Home)**, and then select **[Setup]**.
- 4 Select **[Advanced]** > **[Software Update]** > **[USB]**.
- 5 Follow the instructions on the TV to confirm the update.
 - ↳ When the software update is complete, the home theater automatically switches off and restarts. If it does not, disconnect the power cord for a few seconds, and then reconnect it.



Note

- When the software update is in progress, do not turn off the power or remove the USB flash drive.

9 Product specifications



Note

- Specifications and design are subject to change without notice.

Region codes

The type plate on the back or bottom of the home theater shows which regions it supports.

Country	DVD	BD
Europe, United Kingdom		
Asia Pacific, Taiwan, Korea		
Latin America		
Australia, New Zealand		
Russia, India		
China		

Media formats

- AVCHD, BD-RE, BD-Video, DVD-Video, DVD+R/+RW, DVD-R/-RW, DVD+R/-R DL, CD-R/CD-RW, Audio CD, Video CD/SVCD, Picture files, MP3-CD, WMA-CD, DivX (Ultra)-CD, USB storage device

File formats

- Audio: .aac, .mka, .mp3, .wma, .wav
- Video: .avi, .divx, .mp4, .mkv, .asf, .mpeg, .mpeg
- Picture: .jpg, .jpeg, .gif, .png

Audio formats

Your home theater supports the following audio files.

Extension	Container	Audio codec	Bit rate
.mp3	MP3	MP3	32 kbps ~ 320 kbps
.wma	ASF	WMA	64 kbps ~ 160 kbps
.aac	AAC	AAC, HE-AAC	192 kbps
.wav	WAV	PCM	1.4 Mbps
.m4a	MKV	AAC	192 kbps
.mka	MKA	PCM	27.648 Mbps
.mka	MKA	AC-3	640 kbps
.mka	MKA	DTS core	1.54 Mbps
.mka	MKA	MPEG	912 kbps
.mka	MKA	MP3	32 kbps ~ 320 kbps
.mka	MKA	WMA	64 kbps ~ 160 kbps
.mka	MKA	AAC, HE-AAC	192 kbps

Video formats

If you have a high definition TV, your home theater allows you to play your video files with:

- Resolution: 1920 × 1080 pixels at
- Frame rate: 6 ~ 30 frames per second.

.avi files in AVI container

Audio codec	Video codec	Bit rate
PCM, AC-3, DTS core, MP3, WMA	DivX 3.11, DivX 4.x, DivX 5.x, DivX 6.x	10 Mbps max
	MPEG 1, MPEG 2	20 Mbps (peak 40 Mbps)
	MPEG 4 ASP	10 Mbps max
	H.264/AVC HP@4.1/4.0; MP@3.2/3.1/3.0	20 Mbps (peak 40 Mbps)

.divx files in AVI container

Audio codec	Video codec	Bit rate
PCM, AC-3, MP3, WMA	DivX 3.11, DivX 4.x, DivX 5.x, DivX 6.x	10 Mbps max
	MPEG 1, MPEG 2	20 Mbps (peak 40 Mbps)
	MPEG 4 ASP	10 Mbps max

.mp4 or .m4v files in MP4 container

Audio codec	Video codec	Bit rate
AC-3, MPEG, MP3, AAC, HE-AAC	MPEG 1, MPEG 2	20 Mbps (peak 40 Mbps)
	MPEG 4 ASP	10 Mbps max
	H.264/AVC HP@4.1/4.0; MP@3.2/3.1/3.0	20 Mbps (peak 40 Mbps)

.mkv files in MKV container

Audio codec	Video codec	Bit rate
PCM, AC-3, DTS core, MPEG, MP3, WMA, AAC, HE-AAC	MPEG 1, MPEG 2	20 Mbps (peak 40 Mbps)
	MPEG 4 ASP	10 Mbps max
	H.264/AVC HP@4.1/4.0; MP@3.2/3.1/3.0	20 Mbps (peak 40 Mbps)

.mpg and .mpeg files in PS container

Audio codec	Video codec	Bit rate
PCM, DTS core, MPEG, MP3	MPEG 1, MPEG 2	20 Mbps (peak 40 Mbps)
	MPEG 1, MPEG 2	20 Mbps (peak 40 Mbps)

Amplifier

- Total output power: 240W RMS (10% THD)
- Frequency response: 20 Hz-20 kHz / ±3 dB
- Signal-to-noise ratio: > 65 dB (CCIR) / (A-weighted)
- Input sensitivity:
 - AUX1, AUX2: 1000 mV
 - Music i.Link: 500 mV

Video

- Signal system: PAL / NTSC
- HDMI output: 480i/576i, 480p/576p, 720p, 1080i, 1080p, 1080p24

Audio

- Sampling frequency:
 - MP3: 32 kHz, 44.1 kHz, 48 kHz
 - WMA: 44.1 kHz, 48 kHz
- Constant bit rate:
 - MP3: 32 kbps - 320 kbps
 - WMA: 48 kbps - 192 kbps

Radio

- Tuning range:
 - Europe/China: FM 87.5-108 MHz (50 kHz)
 - Asia Pacific/Russia/Latin America: FM 87.5-108 MHz (50/100 kHz)
- Signal-to-noise ratio: FM 50 dB
- Frequency response: FM 180 Hz-12.5 kHz / ± 3 dB

USB

- Compatibility: Hi-Speed USB (2.0)
- Class support: USB Mass Storage Class (MSC)
- File system: FAT16, FAT32, NTFS
- Maximum memory support: < 160 GB

Main unit

- Power supply: 110-240 V~, 50-60 Hz
- Power consumption: 55 W
- Standby power consumption: ≤ 0.9 W
- Dimensions (WxHxD): 360 x 58 x 325 mm
- Weight: 2.7 kg

Subwoofer

- Total output power: 40W RMS (10% THD)
- Impedance: 12 ohm
- Speaker drivers: 165 mm (6.5") woofer
- Frequency response: 20 Hz-150 Hz
- Dimensions (WxHxD): 123 x 309 x 369 (mm)
- Weight: 3.2 kg
- Cable length: 3 m

Speakers

Center speaker:

- Total output power: 40W RMS (10% THD)
- System: full range satellite
- Speaker impedance: 3 ohm
- Speaker drivers: 76.2 mm (3") full range
- Frequency response: 150 Hz-20 kHz
- Dimensions (WxHxD): 161 x 95 x 92 mm
- Weight: 0.4 ~ 0.5 kg
- Cable length: 2 m

Front/rear speakers:

- Total output power: 4 x 40W RMS (10% THD)
- Speaker impedance: 3ohm
- Speaker drivers: 76.2 mm (3") full range
- Frequency response: 150 Hz-20 kHz
- Dimensions (WxHxD): 161 x 95 x 87 mm
- Weight: 0.4 ~ 0.5 kg/ each
- Cable length (front speakers): 4 m
- Cable length (rear speakers): 10 m

Remote control batteries

- 2 x AAA-R03-1.5 V

Laser

- Laser Type (Diode): InGaN/AlGaIn (BD), AlGaInP (DVD/CD)
- Wave length: 405 +7 nm/-7 nm (BD), 655 +10 nm/-10 nm (DVD), 790 +10 nm/-20 nm (CD)
- Output power (Max. ratings): 20 mW (BD), 6 mW (DVD), 7 mW (CD)

10 Troubleshooting



Warning

- Risk of electric shock. Never remove the casing of the product.

To keep the warranty valid, never try to repair the product yourself.

If you have problems using this product, check the following points before you request service. If you still have a problem, register your product and get support at www.philips.com/welcome.

Main unit

The buttons on the home theater do not work.

- Disconnect the home theater from the power supply for a few minutes, then reconnect.

Picture

No picture.

- Make sure that the TV is switched to the correct source for the home theater.

No picture on a TV connected through HDMI.

- Make sure that you use a High Speed HDMI cable to connect the home theater and TV. Some Standard HDMI cables do not display properly for some images, 3D video, or Deep Color.
- Make sure that the HDMI cable is not faulty. If it is faulty, replace it with a new cable.
- Press **Home** and then **731** on the remote control to restore the default picture resolution.
- Change the HDMI video setting, or wait for 10 seconds for auto recovery (see 'Picture resolution' on page 22).

Disc does not play high-definition video.

- Make sure that the disc contains high-definition video.
- Make sure that the TV supports high-definition video.
- Use an HDMI cable to connect to the TV.

Sound

No sound from home theater speakers.

- Connect the audio cable from your home theater to your TV or other devices. You do not need a separate audio connection when:
 - the home theater and TV are connected through an **HDMI ARC** connection, or
 - a device is connected to the **HDMI IN** connector on your home theater.
- Set up the audio for the connected device (see 'Set up audio for connected devices' on page 12).
- Reset your home theater to its factory settings, switch it off, and then switch it on again.
- On your home theater, press **AUDIO SOURCE** repeatedly to select the correct audio input.

Distorted sound or echo.

- If you play audio from the TV through the home theater, make sure that the TV is muted.

Audio and video are not synchronized.

- 1) Press **Sound options**. 2) Press the **Navigation buttons** (left/ right) to select **AUD SYNC**, and then press **OK**. 3) Press the **Navigation buttons** (up/down) to synchronize the audio with the video.

Play

Cannot play a disc.

- Clean the disc.
- Make sure that the home theater supports the type of disc (see 'Media formats' on page 26).
- Make sure that the home theater supports the region code of the disc (see 'Region codes' on page 26).
- If the disc is a DVD±RW or DVD±R disc, make sure that it is finalized.

Cannot play a DivX file.

- Make sure that the DivX file is encoded according to the 'Home Theater Profile' with the DivX encoder.
- Make sure that the DivX file is complete.

DivX subtitles do not display correctly.

- Make sure that the subtitle file name is the same as the movie file name (see 'Subtitles' on page 17).
- Select the correct character set: 1) Press **□** (Options). 2) Select **[Character Set]**. 3) Select the supported character set. 4) Press **OK**.

Cannot read the contents of a USB storage device.

- Make sure that the format of the USB storage device is compatible with the home theater.
- Make sure that the file system on the USB storage device is supported by the home theater.

'No entry' or 'x' sign appears on the TV.

- The operation is not possible.

EasyLink does not work.

- Make sure that the home theater is connected to a Philips brand EasyLink TV, and the EasyLink option is on (see 'EasyLink' on page 20).

When you switch on the TV, the home theater automatically switches on.

- This behavior is normal when you are using Philips EasyLink (HDMI-CEC). To make the home theater work independently, switch off EasyLink.

Cannot access BD-Live features.

- Make sure that the home theater is connected to the network (see 'Set up the wired network' on page 13).
- Make sure that the network is set up (see 'Set up the wired network' on page 13).
- Make sure that the Blu-ray disc supports BD-Live features.
- Clear memory storage (see 'Clear memory' on page 16).

TV screen is black when you play a Blu-ray 3D video or a DivX copy protected video.

- Make sure that the home theater is connected to the TV through an HDMI cable.
- Switch to the correct HDMI source on the TV.

11 Index

A

advanced

BD-Live security	16
restore default settings	24
software update	24
software version	24

amplifier

27

audio

formats	26
HDMI audio	22
input mapping	21
language	22
night mode	22
options	17
predefined modes	14
quality	11
settings	22
source	12
speaker setup	9
specifications	28

audio formats

26

audio input mapping

21

audio language

22

audio options

17

auto standby

23

B

bass

14

BD-Live

BD-Live (USB)	15
clear memory	16
disable	16
troubleshooting	29

Blu-ray

14

Bonus View

15

brightness

24

browse

disc	14
USB storage device	16

C

calibrate speakers

manually	9
----------	---

care

environment	5
product	5

character set

17

close disc compartment

6

compliance

2

computer	
connect to	12
karaoke	19
connect	
audio (analog cable)	12
audio (coaxial cable - digital)	11
audio (optical cable - digital)	11
audio from TV and other devices	11
home network	12
speakers	8
TV (Composite)	11
TV (HDMI ARC)	10
TV (HDMI)	10
connectors	
back connectors	9
front connectors	9
control	
disc play	14
Easylink (HDMI-CEC)	7
main unit	6
parental control	23
radio	18
USB storage device	14
<hr/>	
D	
disable	
BD-Live	16
HDMI-CEC	20
discs	
audio	17
audio language	22
BD-Live	15
Bonus View	15
control buttons	14
DivX	16
eject disc	6
menu language	23
options	17
picture	18
picture-in-picture	15
subtitles	23
synchronize picture and sound	15
time search	17
titles	17
display panel	6
DivX	
character set	17
subtitles	17
VOD code	16
<hr/>	
E	
EasyLink (HDMI-CEC)	
audio input mapping	21
control buttons	7
one-touch play	20
one-touch standby	20
system audio control	20
eject disc	6
enable	
auto standby	23
BD-Live	16
HDMI-CEC	20
screen saver	24
energy	
auto standby	23
brightness	24
screen saver	24
sleep timer	23
<hr/>	
F	
factory settings	24
FAQs	2
FM antenna	9
front connectors	9
<hr/>	
H	
HDMI	
audio	22
Deep color	22
TV (HDMI ARC)	10
video	22
HDMI-CEC	20
<hr/>	
I	
Internet	
BD-Live	15
connect to	12
update home theater software	24
<hr/>	
L	
language	
2nd audio language	15
2nd subtitle language	15
audio	22
disc menu	23
onscreen menu	22
subtitle	23
legal notices	2

<hr/>	
M	
main unit	
overview	6
specifications	28
troubleshooting	29
manually setup speakers	9
media formats	26
microphone	9
MP3	
connector	9
play	19
multimedia content	
from disc	14
from USB storage device	16
<hr/>	
N	
network	
home network	12
settings	12
update home theater software	24
wired connection	12
night mode	22
<hr/>	
O	
one-touch play	20
one-touch standby	20
open disc compartment	6
open source software	3
options	
audio	17
picture	18
video	17
overview	
connectors	9
HDMI-CEC	20
main unit	6
remote control	6
settings	21
speaker setup	9
<hr/>	
P	
parental control	
password	23
ratings	23
password	23
PC	
connect to	12
Philips Easylink	20
picture	
options	18
rotate	18
settings	17
slideshows	18
troubleshooting	29
zoom	18
picture options	18
picture-in-picture	
2nd audio language	15
2nd subtitle language	15
play	
discs	14
DivX	16
MP3	19
radio	28
slideshows	18
troubleshooting	29
USB	16
position	
connectors	9
position	8
subtitles	23
power options	
brightness	24
screen saver	24
sleep timer	23
standby	23
preference	
audio	22
auto standby	23
change password	23
disc menu	23
display panel	24
menu language	22
parental control	23
screen saver	24
sleep timer	23
subtitle	23
product specifications	26
<hr/>	
R	
radio	
control buttons	18
listen to radio	19
specifications	28
tune stations	18
tuning grid	19
ratings	23
recycling	5
region codes	26
remote control	
batteries	28
overview	6
repeat	17

S		
safety		
disposal	5	
use of the product	4	
screen saver	24	
settings		
audio	22	
default	24	
disc language	23	
HDMI audio	22	
HDMI video	22	
HDMI-CEC	20	
menu language	22	
parental		
password	23	
ratings	23	
password	23	
picture	21	
power	23	
ratings	23	
resolution	22	
restore	24	
screen saver	24	
sleep timer	23	
standby	23	
subtitle language	23	
video	21	
sleep timer	23	
slideshows		
animation	18	
duration	18	
musical	18	
picture	18	
software		
check current version	24	
update	24	
sound		
bass	14	
mode	14	
surround sound	14	
synchronize picture and sound	15	
troubleshooting	29	
speaker setup		
predefined modes	14	
settings	22	
speakers		
5.1 speakers	8	
calibrate	9	
connect	8	
manual setup	9	
position	8	
specifications	28	
surround sound	14	
specifications	26	
standby	23	
subtitle		
character set	17	
language	23	
subwoofer		
specifications	28	
synchronize picture and sound	15	
system audio control	20	
<hr/>		
T		
time search	17	
titles	17	
trademarks	3	
troubleshooting		
connection	29	
main unit	29	
picture	29	
play	29	
serial number	2	
sound	29	
tuning grid	19	
<hr/>		
U		
update software		
check current version	24	
from a USB storage device	25	
from network	24	
USB		
format	28	
USB storage device		
options	17	
play	16	
specifications	28	
update home theater software	25	
<hr/>		
V		
video		
HDMI deep color	22	
options	17	
picture resolution	22	
picture settings	21	
synchronize picture and sound	15	
VOD code for DivX	16	
watch 3D	14	
video formats	27	
video options	17	
VOD code for DivX	16	

W

wired network

settings	13
wired connection	12