

M20



## Short user manual

## ⚠ Important safety instructions

### Warning

- The Electrical network is classified as hazardous. The only way to power down the charger is to unplug the power supply from the electrical outlet. Ensure that the electrical outlet is always easily accessible.
- Refer to safety information before using the product.
- Hereby, TP Vision Europe B.V. declares that this product is in compliance with the essential requirements and other relevant provisions of Directive 2014/53/EU.
- Use only the power supply listed in the user instructions.
- Use only the batteries listed in the user instructions.
- Do not allow the product to come into contact with liquids.
- Risk of explosion if battery is replaced by an incorrect type.
- Dispose of used batteries according to the instructions.
- When the handset rings or when the handsfree is activated, keep the handset away from your ear to avoid hearing damage.

- This product shall be used under the conditions of not interfering with legal radio stations and being protected from interference. To avoid damage or malfunction

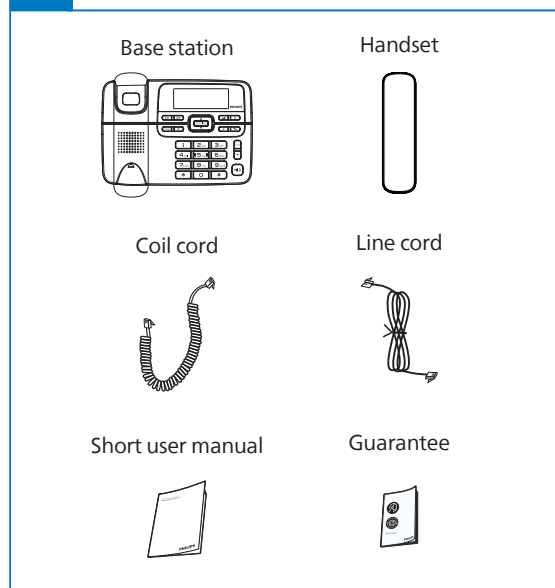
### ⚠ Warning:

- Avoid high temperature (60°C), humid or corrosive environments.

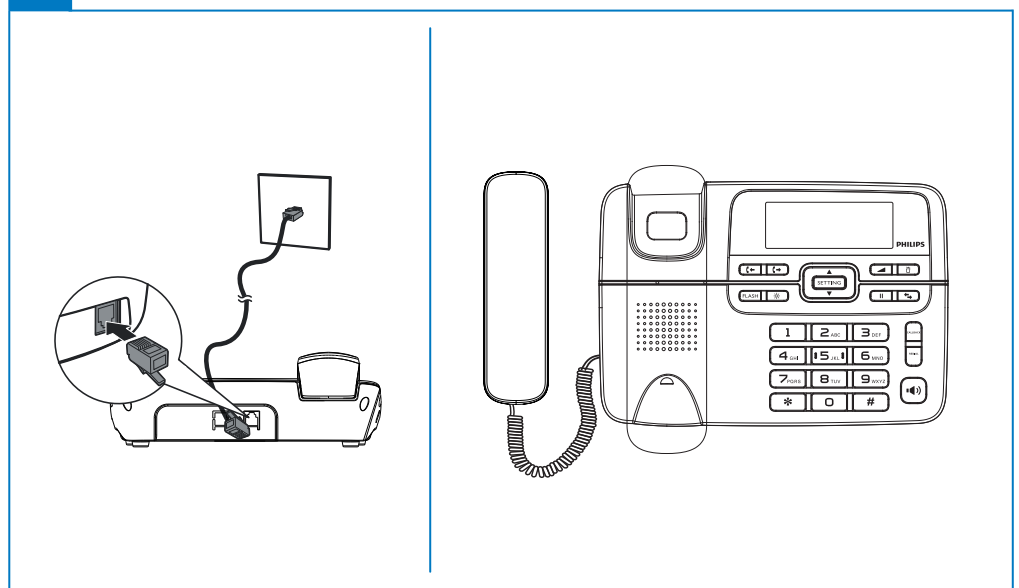
### NCC warning:

- This product shall be used under the indoor conditions of not interfering with legal radio stations and being protected from interference.
- Please use the product appropriately to reduce the influence of electromagnetic waves.

## 1 What is in the box



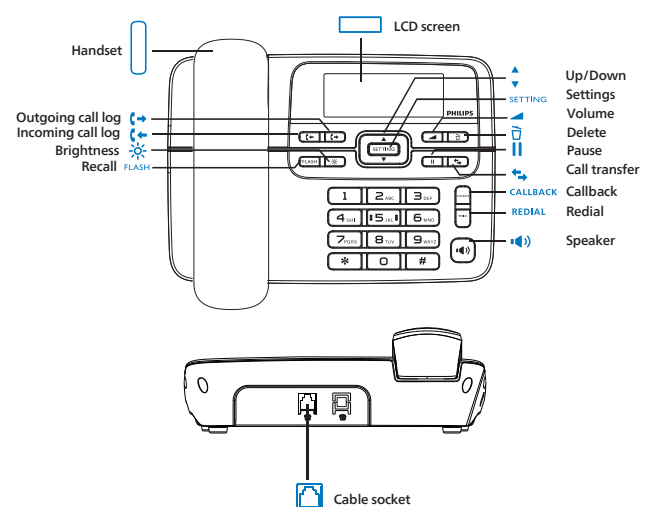
## 2 Connect



## 3 Overview

- Handset**
- Outgoing call log**  
\* It shows the outgoing call log.
- Incoming call log**  
\* It shows the outgoing call log.
- Brightness**  
\* It adjusts the brightness of the screen in on-hook condition.
- Recall**  
\* It is used for recall in off-hook condition.
- Speaker**  
\* Make and receive calls through the speaker.
- Redial**
- Callback**
- Call transfer**
- Pause**

- Delete**  
\* It deletes an incoming or outgoing call. Press and hold for 3s to delete all incoming or outgoing call logs.  
\* It deletes a digit when you dial a number.
- Volume**
- Settings**
- Up/Down**
- LCD screen**
- Cable socket**



## 4 Get started

### Set the date and time

- Press **[SETTING]**. The screen displays "SE 1 DATE". Press **[SETTING]** again to confirm. After entering the date/time settings screen, the year digit starts to blink. Press **[↕]** to set the year and then press **[SETTING]** to set the day/hour/minute.
- Pick up the handset to confirm the setting.

#### Remarks

- After the time and date are set, the LCD screen automatically displays the corresponding day of the week.

## 5 Enjoy

### Make a call

You can make a call in these ways:

- Normal call
- Call from the redial list
- Call from the call log

#### Normal call

1. Pick up the handset or press **[☎]**.
2. Dial the phone number.
  - To erase a digit, press **[☐]**.

#### Redial a call

1. Pick up the handset.
2. Press **[☐]**. The most recent outgoing call is dialed.

### Call from the call log

1. Press **[☎]** to enter the incoming call log.
  2. Press **[↕]** to select a record on the list.
  3. The screen displays the incoming call number, date, and time.
  4. Press **[☐]** or **[☎]** again to call back.
1. Press **[☎]** to enter the outgoing call log.
  2. Press **[☎]** to query the latest outgoing call number and time.
  3. Press **[☐]** or **[☎]** again to call back.

### Query incoming calls

1. Press **[☎]** to enter the incoming call log.
2. Press **[↕]** to select a record on the list.
3. The screen displays the incoming call number, date, and time.

### Turn the speaker on or off

Press **[☎]**.

### Adjust the volume

Adjust the speaker volume  
You can set the speaker volume in the following ways:

1. Press **[☎]** to enter the speaker mode.
2. Press **[↔]** to adjust the speaker volume.  
The speaker volume is set to high upon factory delivery.

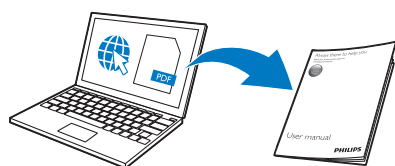
### Set the brightness

There are five brightness levels for selection.

1. In the on-hook condition, press **[☐]** to adjust the screen of the LCD screen. Press this button continuously to display different brightness. The brightness is set to level 3 upon factory delivery.
2. Pick up the handset to confirm the setting.

### Temporary time setting

1. Press **[SETTING]** to enter the setting mode.
2. Press **[↕]** to select "SE 4 FLASH".
3. Press **[SETTING]** again to enter the temporary setting menu.
4. "FLASH 600" is displayed.
5. Press **[↕]** to set the time.
6. Pick up the handset to confirm the setting.



[www.philips.com/support](http://www.philips.com/support)

To access the user instructions online, use the reference model number written on the product label at the bottom of the base station.

2022 © MMD Hong Kong Holding Limited. All rights reserved. Specifications are subject to change without notice.

This symbol on a product means that the product is covered by European Directive 2012/19/EU. This product has been manufactured by, and is sold under the responsibility of MMD Hong Kong Holding Limited and MMD Hong Kong Holding Limited is the warrantor in relation to this product. Philips and the Philips Shield Emblem are registered trademarks of Koninklijke Philips N.V. and are used under license from Koninklijke Philips N.V.



UMS\_M20\_00\_V1.0



## Technical data

### Screen dimensions

- Screen size: 3.3 inches

### General specification and features

- Speaker phone
- Callback and redial
- Call transfer or three-way calling with the transfer button in cooperation with switches

### Weight and dimensions

- Base station and handset:  
539.0 grams
- 77.0 × 218.0 × 179.0 mm  
(H × W × D)



## Frequently asked questions

### No dialing tone

- Make sure your phone is properly connected to the line cord.

### No voice from the receiver or no voice transmission

- Make sure the handset is properly connected to the base through the coil cord.

### The caller ID does not display

- The service is not activated. Check with your service provider.
- The caller's information is withheld or unavailable.

### No display

- Make sure there are power and phone connections.

