

Always there to help you

隨時為您提供協助

Register your product and get support at  
請至以下網址註冊您的產品並取得支援：  
[www.philips.com/welcome](http://www.philips.com/welcome)

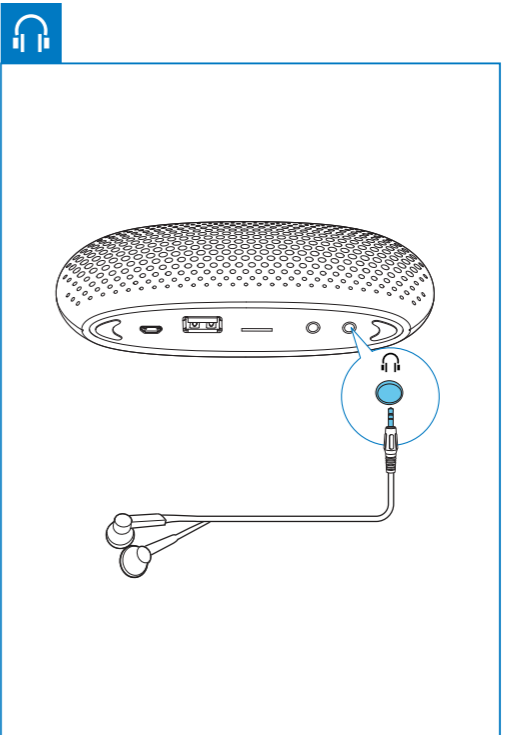
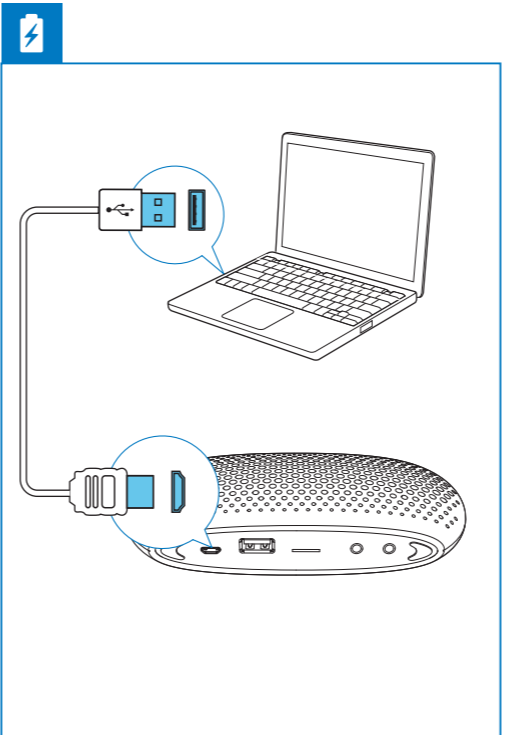
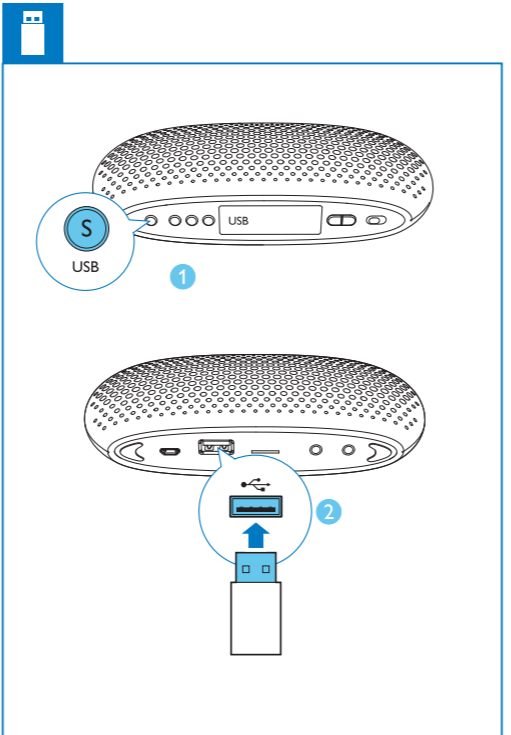
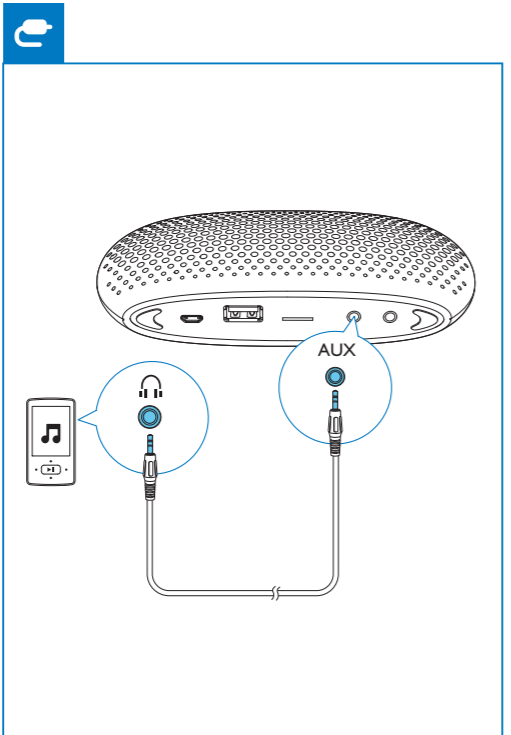
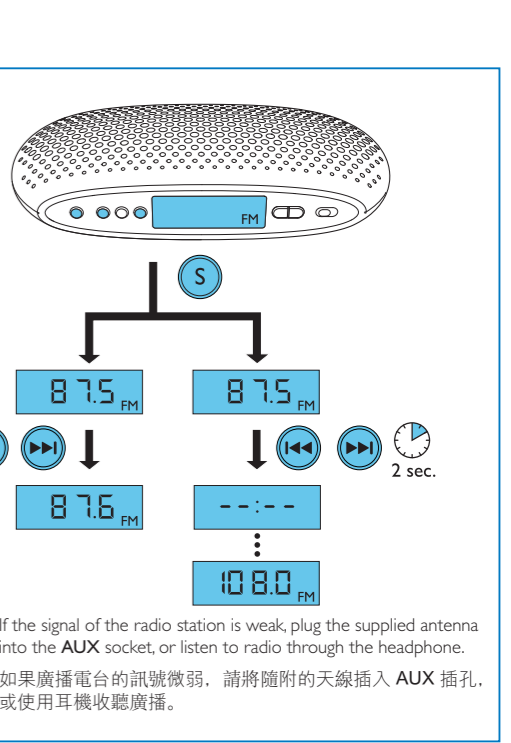
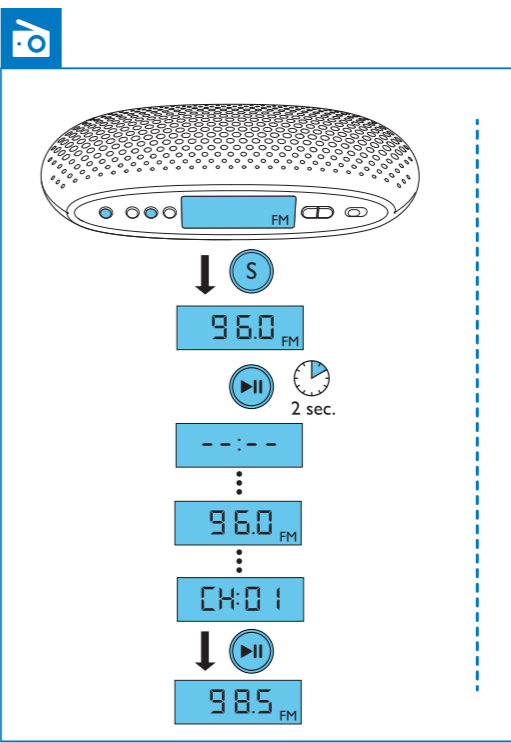
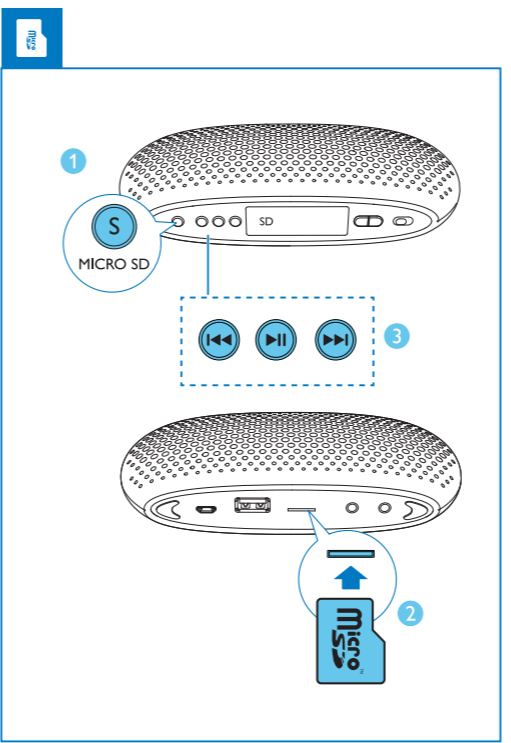
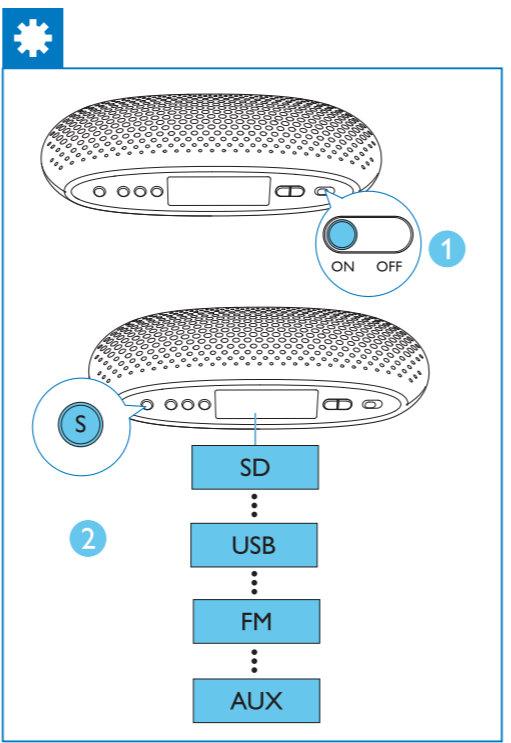
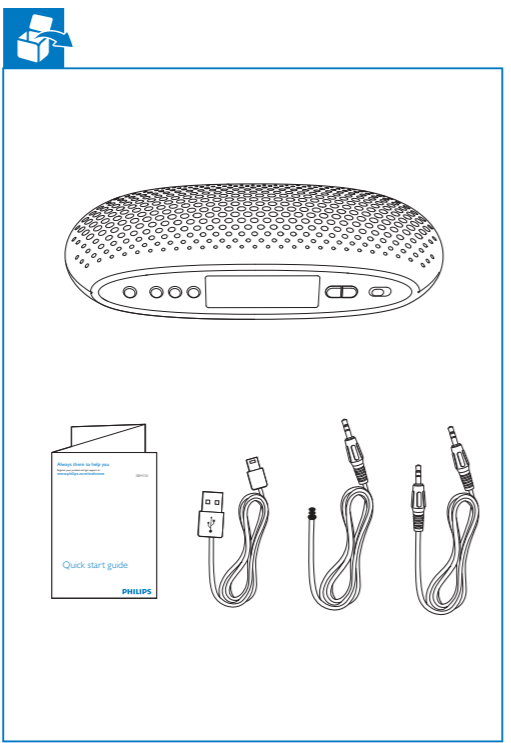
SBM130



EN Quick start guide

ZH-TW 快速啟用指南

**PHILIPS**



All registered and unregistered trademarks are property of their respective owners.  
© 2012 Koninklijke Philips Electronics N.V.  
All rights reserved.  
SBM130\_96\_QSG\_V1.0



To get the detailed instructions for use, visit  
[www.philips.com/support](http://www.philips.com/support).

詳盡的使用說明請造訪  
[www.philips.com/support](http://www.philips.com/support).

## 1 Important

- Read these instructions.
- Follow all instructions.
- Do not use this apparatus near water.
- Do not block any ventilation openings. Install in accordance with the manufacturer's instructions.
- Do not install near any heat sources such as radiators, heat registers, stoves, or other apparatus (including amplifiers) that produce heat.
- Only use attachments/accessories specified by the manufacturer.
- Refer all servicing to qualified service personnel. Servicing is required when the apparatus has been damaged in any way, such as liquid has been spilled or objects have fallen into the apparatus, the apparatus has been exposed to rain or moisture, does not operate normally, or has been dropped.
- The battery shall not be exposed to excessive heat such as sunshine, fire or the like.
- Danger of explosion if battery is incorrectly replaced. Replace only with the same or equivalent type.
- Apparatus shall not be exposed to dripping or splashing.
- Do not place any sources of danger on the apparatus (e.g. liquid filled objects, lighted candles).
- Due to different materials and product techniques, it cannot be guaranteed that all Micro SD cards will work with this speaker.

### Hearing safety

#### ! Caution

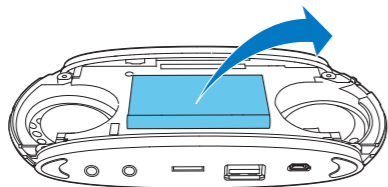
- To prevent possible hearing damage, do not listen at high volume levels for long periods. Set the volume to a safe level. The louder the volume, the shorter is the safe listening time.



### Be sure to observe the following guidelines when using your headphones.

- Listen at reasonable volumes for reasonable periods of time.
- Be careful not to adjust the volume continuously upwards as your hearing adapts.
- Do not turn up the volume so high that you can't hear what's around you.
- You should use caution or temporarily discontinue use in potentially hazardous situations.
- Excessive sound pressure from earphones and headphones can cause hearing loss.

Always bring your product to a professional to remove the built-in battery.



## 2 Notice

Any changes or modifications made to this device that are not expressly approved by Philips Consumer Lifestyle may void the user's authority to operate the equipment.

## Disposal of your old product and batteries

Your product is designed and manufactured with high quality materials and components, which can be recycled and reused.

Never dispose of your product with other household waste. Please inform yourself about the local rules on the separate collection of electrical and electronic products and batteries. The correct disposal of these products helps prevent potentially negative consequences on the environment and human health.

Your product contains batteries, which cannot be disposed of with normal household waste. Please inform yourself about the local rules on separate collection of batteries. The correct disposal of batteries helps prevent potentially negative consequences on the environment and human health.

Please visit [www.recycle.philips.com](http://www.recycle.philips.com) for additional information on a recycling center in your area.

### Environmental information

All unnecessary packaging has been omitted. We have tried to make the packaging easy to separate into three materials: cardboard (box), polystyrene foam (buffer) and polyethylene (bags, protective foam sheet). Your system consists of materials which can be recycled and reused if disassembled by a specialized company. Please observe the local regulations regarding the disposal of packaging materials, exhausted batteries and old equipment.

#### ☰ Note

- The type plate is located on the bottom of the apparatus.

## 3 Product information

#### ☰ Note

- Product information is subject to change without prior notice.

## Specifications

### Amplifier

Signal to Noise Ratio	>50 dB
Aux Input	600mV RMS, 22 kohm

### Tuner (FM)

Tuning Range	87.5-108 MHz
--------------	--------------

### General information

Power Supply	5V === 0.7 A
Built-in Battery	Lithium battery
Dimensions - Main Unit (W x H x D)	155 x 71 x 37 mm
Weight - Main Unit	0.2 kg

## 1 重要事項

- 閱讀這些指示。
- 遵循所有指示。
- 請勿在近水處使用本產品。
- 請勿阻塞任何通風口。請依照製造商的指示進行安裝。
- 請勿將本產品安裝在接近熱源處，例如暖器裝置、暖氣孔、火爐或其他會產生高溫的產品（包括擴大機在內）。
- 僅使用原廠指定的附件/配件。
- 所有維修服務應委託合格的服務人員處理。當本產品因故損壞時（例如液體潑濺、物品掉入產品內部、產品淋到雨或受潮、無法正常運作或掉落等），都必須進行維修。
- 請勿讓電池暴露在過熱溫度下，例如日照、火焰等。
- 未能正確更換電池將造成電池爆炸的危險。限換用同型或通用類型。
- 請勿將產品置於容易滴水或濺水的環境。
- 請勿在產品上放置危險物品（如盛裝液體的容器、點燃的蠟燭等）。
- 因材質與產品技術有別，無法保證所有 Micro SD 卡均能與此揚聲器搭配使用。

### 聽力安全

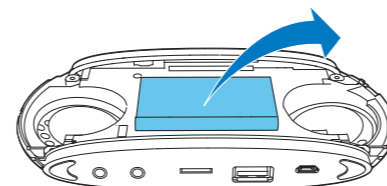
#### ! 注意

- 為避免造成可能的聽力受損，請勿長時間以高音量聆聽。請將音量設在安全音量。音量愈大，安全聆聽時間愈短。



### 使用耳機時務必遵守以下準則。

- 音量適中，適時休息。
- 注意勿因聽覺適應而不斷調高音量。
- 勿將音量調高至聽不到週遭聲音的程度。
- 在有潛在危險的環境應提高警覺或暫不使用本產品。
- 長時間使用耳機並暴露在高分貝下可能導致聽覺喪失。若要取出產品的內建電池，請務必交由專業人員處理。



## 2 注意

未經 Philips Consumer Lifestyle 明示核可即變更或修改本裝置，可能導致使用者操作本設備的授權失效。

## 處理廢棄產品及電池

您的產品是使用高品質材質和元件所設計製造，可回收和重複使用。請勿將您的產品與其他家用廢棄物共同丟棄。請瞭解當地電氣、電子產品與電池分類收集的相關法規。正確處理這些產品有助於避免對環境和人體健康造成潛在的負面影響。產品內含的電池不得與一般家用廢棄物一併丟棄。請了解當地有關電池的垃圾分類相關法規。正確處理廢棄電池有助於避免對環境和人類健康帶來負面影響。請瀏覽 [www.recycle.philips.com](http://www.recycle.philips.com) 取得當地資源回收中心的相關其他資訊。

### 環境保護資訊

所有非必要之包裝材料均已捨棄。我們嘗試讓包裝可以輕易拆分成三種材質：厚紙板（外盒）、聚苯乙烯泡棉（防震）以及聚乙烯（包裝袋、保護性泡棉膠紙）。產品本身含有可回收並重複使用的材質，但是需由專業公司拆解。請根據各地法規丟棄包裝材料、廢電池和舊機器。

#### ☰ 備註

- 機型牌位於產品底部。

## 3 產品資訊

#### ☰ 備註

- 產品資訊可在未通知狀況下修改。

## 規格

### 擴大機

訊噪比	>50 dB
Aux 輸入	600mV RMS, 22 kohm

### 調諧器 (FM)

調諧範圍	87.5-108 MHz
------	--------------

### 一般資訊

電源供應	5V === 0.7 A
內建電池	鋰電池
尺寸 - 主裝置 (寬 x 高 x 深)	155 x 71 x 37 公釐
重量 - 主裝置	0.2 公斤

