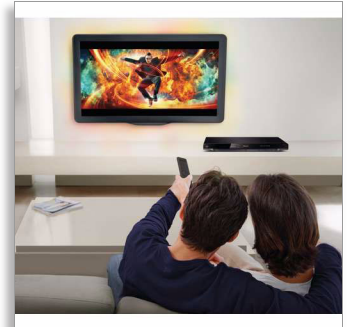


Philips 5000 series
Blu-ray Disc player

3D playback
DivX Plus HD
Net TV



BDP5200

Blu-ray 3D and the best of Internet on your TV

Be amazed with Blu-ray 3D and discover a new dimension in your movie experience at home. Enjoy the best of Internet on your TV with Net TV, hassle-free with the speedy built-in WiFi-n. And playback more than ever before with DivX Plus HD.

See more

- Blu-ray 3D Disc playback for a full HD 3D experience at home
- Net TV for popular online services on your TV
- DivX Plus HD Certified for high definition DivX playback
- DLNA Network Link to enjoy photos and videos from your PC
- Subtitle Shift for widescreen without any missing subtitles

Hear more

- Dolby TrueHD and DTS-HD MA for HD 7.1 surround sound

Engage more

- Built-in WiFi-n for faster, wider wireless performance
- USB 2.0 plays video/music from USB flash/hard disk drive
- Turn your Smartphone into a remote for Philips AV products
- USB keyboard connectivity for easy Net TV and Web browsing
- EasyLink to control all HDMI CEC devices via a single remote



PHILIPS

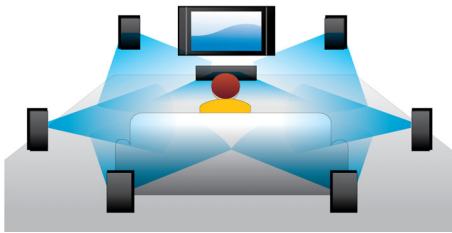
Highlights

Blu-ray 3D Disc playback



Full HD 3D provides the illusion of depth for a heightened, realistic cinema viewing experience at home. Separate images for the left and right eyes are recorded in 1920 x 1080 full HD quality and alternately played on screen at a high speed. By watching these images through special glasses that are timed to open and close the left and right lenses in synchronization with the alternating images, the full-HD 3D viewing experience is created.

Dolby TrueHD and DTS-HD MA



DTS-HD Master Audio and Dolby TrueHD delivers 7.1 channels of the finest sound from your Blu-ray Discs. Audio reproduced is virtually indistinguishable from the studio master, so you hear what the creators intended for you to hear. DTS-HD Master Audio and Dolby TrueHD complete your high definition entertainment experience.

DivX Plus HD Certified



DivX Plus HD on your Blu-ray player and/or DVD player offers the latest in DivX

technology to let you enjoy HD videos and movies from the Internet direct to your Philips HDTV or PC. DivX Plus HD supports the playback of DivX Plus content (H.264 HD video with high-quality AAC audio in an MKV file container) while also supporting previous versions of DivX video up to 1080p. DivX Plus HD for true HD digital video.

Net TV



Experience a rich selection of online services with Net TV. Enjoy movies, pictures, infotainment and other online contents directly on your TV via the Philips Blu-ray Disc player whenever you like. Simply connect the player directly to your home network through a wired or wireless connection, then navigate and select what you want to watch with the remote control. The Philips menu gives you access to popular Net TV services fitted for your TV screen.

USB 2.0

The Universal Serial Bus or USB is an industry standard that allows high-speed, easy connection of peripherals to PCs, consumer electronics and mobile products. The USB 2.0 provides better and faster performance - up to 40 times quicker than the USB 1.0 and with a data transfer rate of up to 480 Mbps from the original 12 Mbps. When plugged in, everything configures automatically. With USB 2.0, simply plug in your USB portable devices or hard disk drives, select the movie, music or photo and play away.

DLNA Network Link



The DLNA Network link provides easy access to personal photos, music, videos or movies on your PC or Home Network. It uses the Ethernet (LAN) connection with DLNA protocol that assures that DLNA certified products will work together seamlessly. By connecting your Blu-ray Disc player to your home network, you will be able to access information from all DLNA certified devices. You can access your world of entertainment at a simple push of a button with the intuitive user interface, that is designed for easy browsing.

Subtitle Shift



Subtitle Shift is an enhancement feature that lets users manually adjust a movie's subtitle positioning on the television or computer screen. Using the remote control, users can shift the subtitles up and down on the screen. On widescreen displays, such as 21:9 cinema and projectors, the subtitles sometimes get cut off. In order to see them clearly, the user has to change the display aspect ratio, which defeats the purpose of the widescreen. With the Subtitle Shift feature, the user can retain the correct display aspect ratio and have the subtitles ideally positioned on the screen.



Specifications

Picture/Display

- Aspect ratio: 21:9, 16:9, 4:3
- Blu-ray 3D: Full HD 1080p
- Picture enhancement: High Def (720p, 1080i, 1080p), Progressive scan, Video upscaling
- D/A converter: 12Bit/148MHz

Video Playback

- Playback Media: BD Video, BD-ROM, BD-R/RE 2.0, DVD, DVD-Video, DVD+R/+RW, DVD-R/-RW, Video CD/SVCD, CD-R/CD-RW, USB flash drive, DivX, CD
- Compression formats: DivX Plus™ HD, MKV, H.264, VC-1, MPEG2, XviD, AVCHD, WMV
- Disc Playback Modes: Standard Play, Pause, Search forward/reverse, Slow Forward, Resume Playback from Stop, Skip, Disc Menu, Repeat, A-B Repeat, Zoom, Angle
- Video Enhancement: Deep Color, x.v. Color, Video Upscaling, Progressive Scan
- BD Region Code: C
- DVD Region Code: 5

Sound

- Sound System: DTS-HD Master Audio, Dolby True HD, Dolby Digital Plus, DTS, Dolby Digital
- Signal to noise ratio: = 100 dB
- Dynamic Range (1kHz): =90 dB
- Frequency response: (20kHz): = |0.2|dB (Max./Min. 2ch, DVD) Hz Hz
- D/A converter: 24 bit, 192 kHz

Audio Playback

- Playback Media: CD, CD-R/RW, MP3-CD, MP3-DVD, USB flash drive
- Compression format: DTS, Dolby Digital, AAC (multi-channels), MP3, PCM, WMA

Digital Photo Playback

- Playback Media: CD-R/RW, DVD+R/+RW, DVD-R/-RW, USB flash drive
- Picture Compression Format: JPEG
- Picture Enhancement: High Definition Resolution, Slideshow, Rotate, Zoom, Slideshow with MP3

playback

Connectivity

- Rear Connections: HDMI output, Digital coaxial out, Composite video (CVBS) output, Analog audio Left/Right out, Ethernet
- Front / Side connections: USB 2.0
- Network connections: Built-in WiFi, Wi-Fi - 802.11 b/g
- PC network link: DLNA 1.5 certified

Convenience

- EasyLink (HDMI-CEC): One touch play, One touch standby
- On-Screen Display languages: English, German, French, Dutch, Italian, Portuguese, Spanish, Danish, Finnish, Polish, Swedish, Norwegian, Turkish, Czech, Greek
- Child Protection: Parental Control
- BD-Live(1GB USB memory needed)
- Firmware upgradeable: Firmware upgradeable via USB, Online firmware upgrade
- Online services: Net TV
- Ease of Use: AV remote app, Fast wake up

Accessories

- Included accessories: Audio/Video cable, User Manual, CD-R (User Manual), Quick start guide, Product Registration Card, Remote Control, 2 x AAA Batteries
- User Manual: English, Russian, Ukraine

Power

- Power supply: 220-240V, 50/60 Hz
- Power consumption: 18 W
- Standby power consumption: 0.18W

Dimensions

- Packaging dimensions (W x H x D): 495 x 99 x 303 mm
- Weight incl. Packaging: 2.4 kg
- Product dimensions (W x H x D): 435 x 42 x 208.5 mm
- Product weight: 1.65 kg



Issue date 2014-02-07

Version: 4.1.7

12 NC: 8670 000 68096
EAN: 87 12581 56425 4

© 2014 Koninklijke Philips N.V.
All Rights reserved.

Specifications are subject to change without notice.
Trademarks are the property of Koninklijke Philips N.V.
or their respective owners.

www.philips.com