

# Always there to help you

Register your product and get support at  
[www.philips.com/support](http://www.philips.com/support)



MCM2300  
MCM2300W



## User manual

# PHILIPS



# Contents

---

<b>1 Important</b>	<b>2</b>
Safety	2
Notice	2

---

<b>2 Your Micro Music System</b>	<b>4</b>
Introduction	4
What's in the box	4
Overview of the main unit	5
Overview of the remote control	6

---

<b>3 Get started</b>	<b>7</b>
Connect speakers	7
Connect power	7
Prepare the remote control	7
Power on	8
Set the clock	8
Select a source	8

---

<b>4 Play</b>	<b>10</b>
Play from disc	10
Play from USB	10
Control play	10
Skip tracks	11
Program tracks	11

---

<b>5 Listen to the radio</b>	<b>12</b>
Tune to a radio station	12
Program radio stations automatically	12
Program radio stations manually	12
Select a preset radio station	12

---

<b>6 Adjust sound</b>	<b>13</b>
Select a preset sound effect	13
Adjust volume level	13
Mute sound	13

---

<b>7 Other features</b>	<b>14</b>
Set the alarm timer	14
Set the sleep timer	14
Listen to an external device	14

---

---

<b>8 Product information</b>	<b>16</b>
Specifications	16
USB playability information	16
Supported MP3 disc formats	17

---

<b>9 Troubleshooting</b>	<b>18</b>
--------------------------	-----------

---

# 1 Important

---

## Safety

Read and understand all instructions before you use this micro music system. If damage is caused by failure to follow the instructions, the warranty does not apply.

### Risk of electric shock or fire!

- Never remove the casing of the product.
- Never expose the product and accessories to rain or water. Never place liquid containers, such as vases, near the product. If liquids are spilt on or into the product, disconnect it from the power outlet immediately. Contact the Consumer Care to have the product checked before use.
- Never place the product and accessories near naked flames or other heat sources, including direct sunlight.
- Never insert objects into the ventilation slots or other openings on the product.
- Where the mains plug or an appliance coupler is used as the disconnect device, the disconnect device shall remain readily operable.
- Disconnect the product from the power outlet before lightning storms.
- When you disconnect the power cord, hold the plug securely, never the cable.
- Batteries (battery pack or batteries installed) shall not be exposed to excessive heat such as sunshine, fire or the like.

### Risk of short circuit or fire!

- Before you connect the product to the power outlet, make sure that the power voltage matches the value printed on the back of the product. Never connect the product to the power outlet if the voltage is different.

- Never expose the remote control or batteries to rain, water, sunshine, or excessive heat.
- Avoid force coming onto power plugs. Loose power plugs can cause arcing or fire.
- Correctly install the battery with its polarity (+/- signs) as marked on the remote control.
- Danger of explosion if battery is incorrectly replaced. Replace only with the same or equivalent type.

### Risk of injury or damage to the product!

- Visible and invisible laser radiation when open. Avoid exposure to beam.
- Do not touch the disc optical lens inside the disc compartment.
- Never place the product or any objects on power cords or on other electrical equipment.
- If the product is transported in temperatures below 5°C, unpack the product and wait until its temperature matches room temperature before connecting it to the power outlet.

### Risk of overheating!

- Never install this product in a confined space. Always leave a space of at least four inches around the product for ventilation.
- Make sure that curtains or other objects never cover the ventilation slots on the product.

### Risk of contamination!

- Remove the battery if it is exhausted or if the remote control is not to be used for an extended period of time.
- Batteries contain chemical substances, they should be disposed of properly.

---

## Notice

Any changes or modifications made to this device that are not expressly approved by Gibson Innovations may void the user's authority to operate the equipment.

---

## Compliance

This apparatus includes this label:



---

## Care of the environment

### Disposal of your old product and batteries

Your product is designed and manufactured with high quality materials and components, which can be recycled and reused. Never dispose of your product with other household waste. Please inform yourself about the local rules on the separate collection of electrical and electronic products and batteries. The correct disposal of these products helps prevent potentially negative consequences on the environment and human health. Your product contains batteries, which cannot be disposed of with normal household waste. Please inform yourself about the local rules on separate collection of batteries. The correct disposal of batteries helps prevent potentially negative consequences on the environment and human health.

Please visit [www.recycle.philips.com](http://www.recycle.philips.com) for additional information on a recycling center in your area.

### Environmental information

All unnecessary packaging has been omitted. We have tried to make the packaging easy to separate into three materials: cardboard (box), polystyrene foam (buffer) and polyethylene (bags, protective foam sheet.) Your system consists of materials which can be recycled and reused if disassembled by a specialized company. Please observe the local regulations regarding the disposal of

packaging materials, exhausted batteries and old equipment.

 **Be responsible**  
**Respect copyrights**

The making of unauthorized copies of copy-protected material, including computer programs, files, broadcasts and sound recordings, may be an infringement of copyrights and constitute a criminal offence. This equipment should not be used for such purposes.

---

## Care for your product

- Do not insert any objects other than discs into the disc compartment.
- Do not insert warped or cracked discs into the disc compartment.
- Remove the discs from the disc compartment if you are not using the product for an extended period of time.
- Only use microfiber cloth to clean the product.

### Note

- The type plate is located on the back of the product.

## 2 Your Micro Music System

Congratulations on your purchase, and welcome to Philips! To fully benefit from the support that Philips offers, register your product at [www.philips.com/welcome](http://www.philips.com/welcome).

---

### Introduction

**With this unit, you can:**

- enjoy audio from discs, USB devices, and other external devices;
- listen to radio stations.

**You can enrich sound output with below sound effect:**

- Digital Sound Control (DSC)

**The unit supports these media formats:**



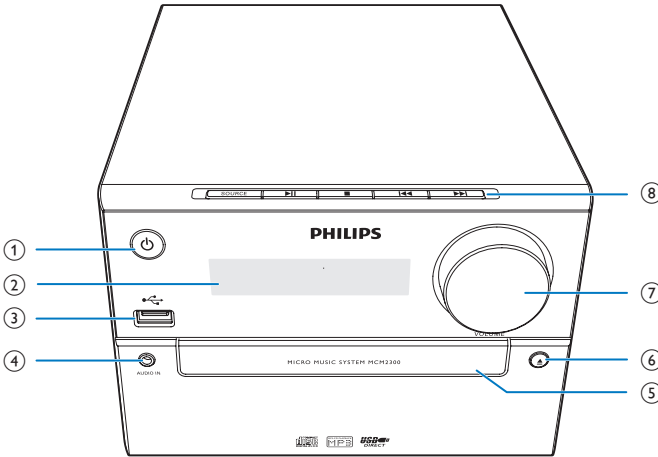
---




### What's in the box

Check and identify the contents of your package:

- Main unit
- Remote control (with one AAA battery)
- Speaker boxes (×2)
- Short user manual

## Overview of the main unit



- ① 
  - Turn on the product.
  - Switch to standby mode or ECO power standby mode.
- ② **Display panel**
  - Show current status.
- ③ 
  - Connect USB storage devices.
- ④ **AUDIO IN**
  - Connect external audio devices.
- ⑤ **Disc compartment**
- ⑥ 
  - Open or close the disc compartment.


- ⑦ **VOLUME**
  - Adjust volume.

- ⑧ **SOURCE**
  - Select a source: DISC, USB, TUNER, AUDIO IN.

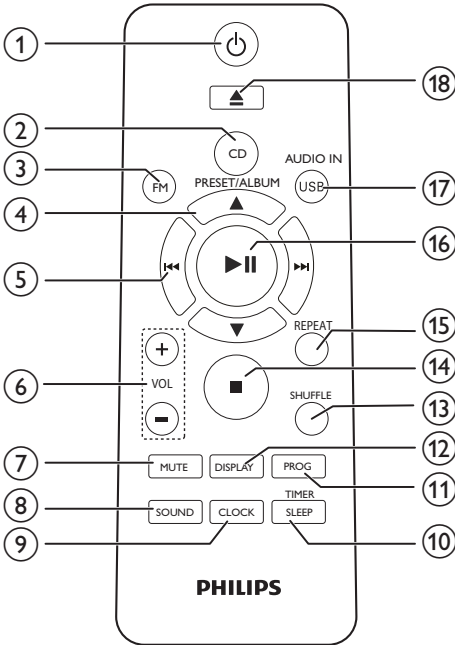


- Skip to previous/next track.
- Search within a track/disc.
- Tune to a radio station.
- Adjust time.



- Start or pause play.
- 
  - Stop play.
  - Erase a program.

## Overview of the remote control



- ① **⏻**
- Turn the unit on or off.
  - Switch to standby mode or ECO power standby mode.
- ② **CD**
- Select CD source.
- ③ **FM**
- Select FM source.
- ④ **PRESET/ALBUM ▲ / ▼**
- Select a preset radio station.
  - Skip to previous/next album.
- ⑤ **⏮ / ⏭**
- Skip to the previous/next track.
  - Search within a track/disc/USB.
  - Tune to a radio station.
  - Adjust time.

- ⑥ **VOL +/-**
- Adjust volume.
- ⑦ **MUTE**
- Mute or restore volume.
- ⑧ **SOUND**
- Enrich sound effect with Digital Sound Control (DSC).
- ⑨ **CLOCK**
- Set the clock.
  - View clock information.
- ⑩ **SLEEP/TIMER**
- Set sleep timer.
  - Set alarm timer.
- ⑪ **PROG**
- Program tracks.
  - Program radio stations.
  - Auto store FM radio stations.
- ⑫ **DISPLAY**
- Adjust display brightness.
- ⑬ **SHUFFLE**
- Play tracks randomly.
- ⑭ **■**
- Stop play or erase a program.
- ⑮ **REPEAT**
- Play a track or all tracks repeatedly.
- ⑯ **▶ ||**
- Start, pause, or resume play.
- ⑰ **USB/AUDIO IN**
- Select USB or AUDIO IN source.
- ⑱ **▲**
- Open or close the disc compartment.



# 3 Get started

## ! Caution

- Use of controls or adjustments or performance of procedures other than herein may result in hazardous radiation exposure or other unsafe operation.

Always follow the instructions in this chapter in sequence.

## Connect speakers

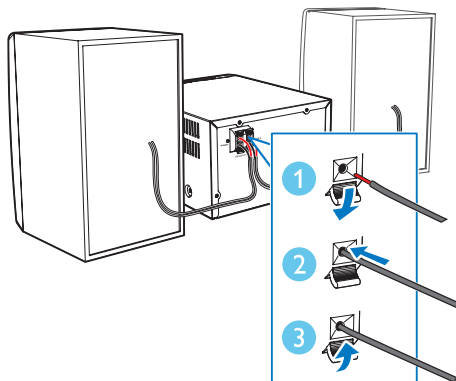
### ≡ Note

- Insert the stripped portion of each speaker wire into the socket completely.
- For better sound quality, use the supplied speakers only.
- Connect only speakers with impedance that is the same or higher than the supplied speakers (refer to the "Specifications" section of this manual).

- 1 For the right speaker; find the sockets on the back of the main unit marked "R".
- 2 Insert the red wire into the red (+) socket, and the black wire into the black (-) socket.
- 3 For the left speaker; find the sockets on the main unit marked "L".
- 4 Repeat step 2 to insert the left speaker wire.

### To insert each speaker wire:

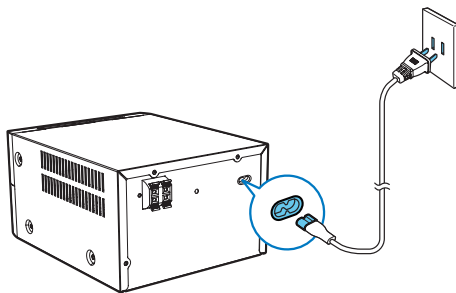
- 1 Hold down the socket flap.
- 2 Insert the speaker wire fully.
- 3 Release the socket flap.



## Connect power

### ! Caution

- Risk of product damage! Ensure that the power supply voltage corresponds to the voltage printed on the back or the underside of the unit.
- Before you connect the AC power cord, ensure that you have completed all other connections.



Connect the power cable to the wall socket.

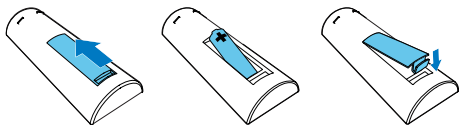
## Prepare the remote control

### ! Caution

- Risk of product damage! When the remote control is not used for long periods, remove the batteries.

To insert the remote control battery:

- 1 Open the battery compartment.
- 2 Insert the supplied AAA battery with correct polarity (+/-) as indicated.
- 3 Close the battery compartment.



## Power on

Press **⏻**.

- ↳ **MCM2300** switches to the last selected source.

## Switch to standby mode

Press **⏻** again to switch **MCM2300** to standby mode.

- ↳ The clock (if set) is displayed on the panel.
- In standby mode, press **⏻** to switch between working mode and standby mode.

### Note

- **MCM2300** switches to Standby mode after 15 minutes inactive.

## Switch to ECO power standby mode

Press and hold **⏻** for more than two seconds.

- ↳ The red ECO power standby indicator turns on.
- In Eco power standby mode, press **⏻** to switch between working mode and ECO power standby mode.

### Note

- **MCM2300** switches to ECO power Standby mode after 15 minutes in standby mode.

## Switch between standby mode and ECO power standby mode:

- Press and hold **⏻** for more than two seconds.

## Set the clock

- 1 In standby mode, press and hold **CLOCK** for more than two seconds to enter the clock setting mode.
  - ↳ **[24H]** or **[12H]** is displayed.
- 2 Press **⏪ / ⏩** to select **24H** or **12H** hour format, and then press **CLOCK**.
  - ↳ The hour digits begin to blink.
- 3 Press **⏪ / ⏩** to set the hour, and then press **CLOCK**.
  - ↳ The minute digits begin to blink.
- 4 Press **⏪ / ⏩** to set the minute, and then press **CLOCK**.
  - ↳ The set clock is displayed.

### Note

- To view clock information in working mode, press **CLOCK**.
- If no button is pressed in 90 seconds during setting, **MCM2300** exits clock setting without saving earlier operations.

## Select a source

### On the main unit

Press **SOURCE** repeatedly to select a source.

- **[DISC]**: the disc in the disc compartment
- **[USB]**: .mp3 files stored on the connected USB storage device
- **[TUNER]**: the FM tuner

- **[AUDIO IN]**: the audio input through the **AUDIO IN** socket

#### **On the remote control**

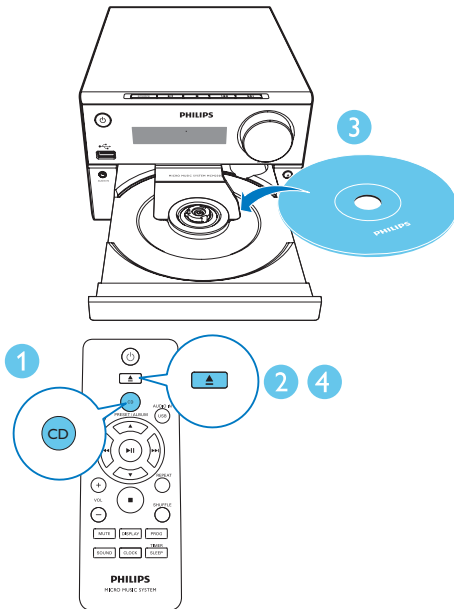
Press **CD**, **FM**, or **AUDIO IN/USB** to select each source directly.

- **CD**: the disc in the disc compartment
- **FM**: the FM tuner
- **AUDIO IN/USB**: the audio input through the **AUDIO IN** socket, or the .mp3 files stored on the connected USB storage device

# 4 Play

## Play from disc

- 1 Press **CD** to select CD source.
- 2 Press **▲** to open the disc compartment.
- 3 Insert a disc with the label side up.
- 4 Press **▲** to close the disc compartment.  
↳ Play starts automatically. If not, press **▶||**.

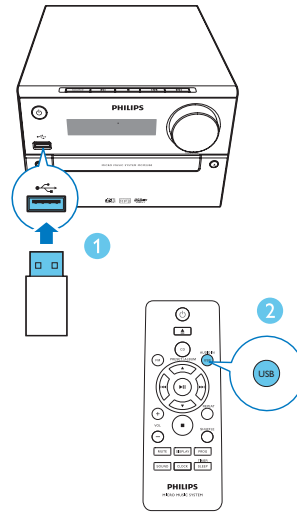


## Play from USB

### Note

- Make sure that the USB device contains playable audio content.

- 1 Insert a USB device into the **USB** socket.
- 2 Press **USB/AUDIO IN** repeatedly to select the USB source.  
↳ Play starts automatically. If not, press **▶||**.



## Control play

<b>▶  </b>	Start, pause, or resume play.
<b>■</b>	Stop play.
<b>▲ / ▼</b>	Select an album or a folder.
<b>◀◀ / ▶▶</b>	Press to skip to the previous or next track. Press and hold to search backward/forward within a track.
<b>REPEAT</b>	Play a track or all tracks repeatedly.
<b>SHUFFLE</b>	Play tracks randomly.
<b>VOL +/-</b>	Increase or decrease the volume.
<b>MUTE</b>	Mute or restore sound.
<b>SOUND</b>	Select a preset sound equalizer.
<b>DISPLAY</b>	Adjust display brightness.

---

## Skip tracks

When playing a CD:

Press ◀◀ / ▶▶ to select tracks.

When playing an MP3 disc and USB:

- 1 Press ▲ / ▼ to select an album or a folder.
- 2 Press ◀◀ / ▶▶ to select a track or a file.

---

## Program tracks

This function allows you to program 20 tracks in the desired sequence.

- 1 In stop mode, press **PROG** to activate the program mode.  
↳ **[PROG]** (program) and **[01 PR 01]** are displayed.
- 2 For MP3 tracks, press ▲ / ▼ to select an album.
- 3 Press ◀◀ / ▶▶ to select a track, and then press **PROG** to confirm.  
↳ **[PROG]** (program) and **[01 PR 02]** are displayed.
- 4 Repeat steps 2 to 3 to program more tracks.
- 5 Press ▶▶ to play the programmed tracks.  
↳ During play, **[PROG]** (program) is displayed.

**To erase the program**

Press ■ twice.

# 5 Listen to the radio

## Tune to a radio station



Tip

- Position the antenna as far as possible from TV, VCR, or other radiation source.
- For optimal reception, fully extend and adjust the position of the antenna.

- 1 Press **FM** repeatedly to select FM source.
- 2 Press and hold **◀◀ / ▶▶** for more than two seconds.  
↳ The radio tunes to a station with strong reception automatically.

- 3 Repeat step 2 to tune to more stations.

**To tune to a weak station:**

Press **◀◀ / ▶▶** repeatedly until you find optimal reception.

## Program radio stations automatically



Note

- You can program a maximum of 20 preset radio stations (FM).

In tuner mode, press and hold **PROG** for more than two seconds to activate automatic programming.

- ↳ All available stations are programmed in the order of waveband reception strength.
- ↳ The first programmed radio station is broadcast automatically.

## Program radio stations manually

- 1 Tune to a radio station.
- 2 Press **PROG**, and then press **▲ / ▼** to select a number from 1–20.
- 3 Press **PROG** to confirm.  
↳ The preset number and the frequency of the preset station are displayed.
- 4 Repeat steps 2-3 to program more stations.



Note

- To overwrite a programmed station, store another station in its place.

## Select a preset radio station

In tuner mode, press **▲ / ▼** to select a preset number.

# 6 Adjust sound

The following operations are applicable to all supported media.

---

## Select a preset sound effect

- Press **SOUND** repeatedly to select a preset sound effect.
  - **DSC1**, **DSC2**, **DSC3**, **DSC4**, and **DSC5**

---

## Adjust volume level

- On the remote control, press **VOL +/-** repeatedly.
- On the main unit, rotate the volume knob.

---

## Mute sound

- Press **MUTE** to mute or restore the sound.

# 7 Other features

## Set the alarm timer

This product can be used as an alarm clock. You can select the disc, FM, or .mp3 files on a USB storage device as alarm source.

### Note

- Make sure that you have set the clock correctly.
- If the selected alarm source is unavailable, this product switches to FM mode automatically.

- 1 In normal standby mode, press and hold **SLEEP/TIMER** for two seconds.  
↳ The hour digits blink.
- 2 Press **⏮** / **⏭** repeatedly to set the hour, and then press **SLEEP/TIMER** to confirm.  
↳ The minute digits blink.
- 3 Press **⏮** / **⏭** to set the minute, and then press **SLEEP/TIMER** to confirm.  
↳ The last selected alarm source blinks.
- 4 Press **⏮** / **⏭** to select an alarm source (DISC, USB or Tuner), and then press **SLEEP/TIMER** to confirm.  
↳ **VOL\_XX** (XX indicates the volume level of alarm) blinks.
- 5 Press **⏮** / **⏭** to set the alarm volume, and then press **SLEEP/TIMER** to confirm.  
↳ **⌚** is displayed.

## Stop an alarm

When an alarm rings, press **⏻** or switch to another mode.

### Note

- If you do not stop an alarm, it keeps ringing for 30 minutes, and then the product automatically switches to normal standby mode.

## Activate/deactivate alarm timer

In standby mode, press **SLEEP/TIMER** repeatedly to activate or deactivate timer.

↳ If timer is activated, **⌚** is displayed.

### Tip

- Alarm timer is not available in AUDIO IN mode.

## Set the sleep timer

**MCM2300** switches to the standby mode automatically after the set time.

When **MCM2300** is turned on, press **SLEEP/TIMER** repeatedly to select a time period (in minutes).

↳ When the sleep timer is activated, **zZ** is displayed.

### To show the remaining time

- Press **SLEEP/TIMER**.

### To deactivate the sleep timer

- Press **SLEEP/TIMER** repeatedly until **[OFF]** is displayed.

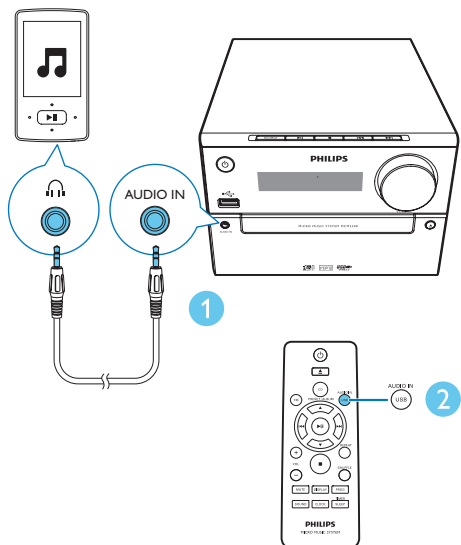
## Listen to an external device

You can listen to an external device through this unit with an MP3 link cable.

- 1 Connect an MP3 link cable (not supplied) between:
  - **AUDIO IN** jack (3.5 mm) on the unit,
  - and the headphone jack on an external device.



- 2 Press **AUDIO IN** repeatedly to select **AUDIO IN** source.
- 3 Start to play the device (see the device user manual).



# 8 Product information

## Note

- Product information is subject to change without prior notice.

## Specifications

### Amplifier

Maximum Output Power	15 W
Frequency Response	60 Hz - 16 kHz; +3 dB
Signal to Noise Ratio	>70 dB
Total Harmonic Distortion	<1%
Aux Input	800 mV RMS

### Speakers

Speaker Impedance	6 ohm
Speaker Driver	Fullrange 3"
Sensitivity	>83 dB/m/W

### Tuner (FM)

Tuning Range	87.5-108 MHz
Tuning grid	50 KHz
Sensitivity	
- Mono, 26dB S/N Ratio	<22 dBu
- Stereo, 46dB S/N Ratio	<45 dBu
Search Selectivity	<30 dBu
Total Harmonic Distortion	<3%
Signal to Noise Ratio	>45 dB

### USB

USB Direct Version	2.0 full speed
USB 5V Power	≤500 mA

### Disc

Laser Type	Semiconductor
Disc Diameter	12 cm/8 cm
Support Disc	CD-DA, CD-R, CD-RW, MP3-CD
Audio DAC	24 Bits/44.1 kHz
Total Harmonic Distortion	<1% (1 kHz)
Frequency Response	60 Hz - 16 kHz; ±3 dB
S/N Ratio	>70 dBA

### General information

AC power	100-240V~, 50/60 Hz
Operation Power Consumption	13 W
Eco Standby Power Consumption	<0.5 W
Dimensions	
- Main Unit (W × H × D)	180 × 121 × 247 mm
- Speaker Box (W × H × D)	150 × 238 × 125 mm
Weight	
- Main Unit	1.6 kg
- Speaker Box	2 × 0.975 kg

## USB playability information

### Compatible USB devices:

- USB flash memory (USB2.0 or USB1.1)
- USB flash players (USB2.0 or USB1.1)
- memory cards (requires an additional card reader to work with this unit)

### Supported USB formats:

- USB or memory file format: FAT12, FAT16, FAT32 (sector size: 512 bytes)
- MP3 bit rate (data rate): 32-320 Kbps and variable bit rate
- Directory nesting up to a maximum of 8 levels
- Number of albums/ folders: maximum 99
- Number of tracks/titles: maximum 999
- File name in Unicode UTF8 (maximum length: 32 bytes)

### Unsupported USB formats:

- Empty albums: an empty album is an album that does not contain MP3/WMA files, and will not be shown in the display.
- Unsupported file formats are skipped. For example, word documents (.doc) or MP3 files with extension .dlf are ignored and not played.
- WMA, AAC, WAV, PCM audio files
- DRM protected WMA files (.wav, .m4a, .m4p, .mp4, .aac)
- WMA files in Lossless format

---

## Supported MP3 disc formats

- ISO9660, Joliet
- Maximum title number: 128 (depending on file name length)
- Maximum album number: 99
- Supported sampling frequencies: 32 kHz, 44.1 kHz, 48 kHz
- Supported Bit-rates: 32~256 (kbps), variable bit rates

# 9 Troubleshooting



## Warning

- Never remove the casing of this device.

To keep the warranty valid, never try to repair the system yourself.

If you encounter problems when using this device, check the following points before requesting service. If the problem remains unsolved, go to the Philips Web page ([www.philips.com/support](http://www.philips.com/support)). When you contact Philips, make sure that the device is nearby and the model number and serial number are available.

### No power

- Make sure that the AC power cord of the device is connected properly.
- Make sure that there is power at the AC outlet.
- As a power-saving feature, the system switches off automatically 15 minutes after track play reaches the end and no control is operated.

### No sound or poor sound

- Adjust the volume.
- Check that the speakers are connected correctly.
- Check if the stripped speaker wires are clamped.

### No response from the unit

- Disconnect and reconnect the AC power plug, then turn on the unit again.
- As a power-saving feature, the system switches off automatically 15 minutes after track play reaches the end and no control is operated.

### Remote control does not work

- Before you press any function button, first select the correct source with the remote control instead of the main unit.
- Reduce the distance between the remote control and the unit.

- Insert the battery with its polarities (+/- signs) aligned as indicated.
- Replace the battery.
- Aim the remote control directly at the sensor on the front of the unit.

### No disc detected

- Insert a disc.
- Check if the disc is inserted upside down.
- Wait until the moisture condensation at the lens has cleared.
- Replace or clean the disc.
- Use a finalized CD or correct format disc.

### Cannot display some files in USB device

- The number of folders or files in the USB device has exceeded a certain limit. This phenomenon is not a malfunction.
- The formats of these files are not supported.

### USB device not supported

- The USB device is incompatible with the unit. Try another one.

### Poor radio reception

- Increase the distance between the unit and your TV or VCR.
- Fully extend the FM antenna.

### Timer does not work

- Set the clock correctly.
- Switch on the timer.

### Clock/timer setting erased

- Power has been interrupted or the power cord has been disconnected.
- Reset the clock/timer.





2015 © Gibson Innovations Limited. All rights reserved.

This product has been manufactured by, and is sold under the responsibility of Gibson Innovations Ltd., and Gibson Innovations Ltd. is the warrantor in relation to this product.

Philips and the Philips Shield Emblem are registered trademarks of Koninklijke Philips N.V. and are used under license from Koninklijke Philips N.V.

