

# Always there to help you

Register your product and get support at  
[www.philips.com/welcome](http://www.philips.com/welcome)



BTM8010



## User manual

# PHILIPS

# Contents

<b>1 Important</b>	<b>2</b>
Safety	2
Notice	3
<b>2 Your Bluetooth Micro music system</b>	<b>5</b>
Introduction	5
What's in the box	5
Overview of the main unit	6
Overview of the remote control	7
<b>3 Before use</b>	<b>9</b>
Connect the FM antenna	9
Connect power	9
Install/replace the remote control batteries	9
<b>4 Get started</b>	<b>11</b>
Know the LED indicator status	11
Set clock	11
Turn on	11
<b>5 Play</b>	<b>12</b>
Play a disc	12
Play from a USB storage device	12
Control play	12
Play from Bluetooth-enabled devices	13
<b>6 Listen to FM radio</b>	<b>15</b>
Tune to an FM radio station	15
Program radio stations automatically	15
Program radio stations manually	15
Tune to a preset radio station	15
Display RDS information	16
<b>7 Other features</b>	<b>17</b>
Set alarm timer	17
Set sleep timer	17
Listen to an external audio device	17
Listen through headphone	18
<b>8 Adjust sound</b>	<b>19</b>
Adjust volume level	19
Mute sound	19
Adjust default sound settings	19
<b>9 Adjust system settings</b>	<b>20</b>
<b>10 Product information</b>	<b>21</b>
Specifications	21
USB playability information	22
Supported MP3 disc formats	22
RDS program types	22
<b>11 Troubleshooting</b>	<b>23</b>

# 1 Important

## Safety

Information for Europe:  
Know these safety symbols



The 'exclamation mark' calls attention to features for which you should carefully read the supplied literature to prevent operating and maintenance problems.

The 'lightening bolt' symbol indicates uninsulated components within the product that can cause an electric shock.

To reduce the risk of fire or electric shock, do not expose the product to rain or moisture and do not place any objects filled with liquids, such as vases, on the product.

- ① Read these instructions.
- ② Keep these instructions.
- ③ Heed all warnings.
- ④ Follow all instructions.
- ⑤ Do not use this product near water.
- ⑥ Clean only with dry cloth.
- ⑦ Do not block any ventilation openings. Install in accordance with the manufacturer's instructions.
- ⑧ Do not remove the casing of this product.
- ⑨ Only use this product indoors. Do not expose the product to dripping / splashing water, rain or high humidity.
- ⑩ Keep this product away from direct sunlight, naked flames or heat.

- ⑪ Do not install near any heat sources such as radiators, heat registers, stoves, or other electrical equipment (including amplifiers).
- ⑫ Do not place any other electrical equipment on the product.
- ⑬ Do not place any sources of danger on the product (e.g. objects containing liquids, burning candles).
- ⑭ This product may include batteries. Please refer to safety and disposal instructions for batteries in this user manual.
- ⑮ Where the mains plug or an appliance coupler is used as the disconnect device, the disconnect device shall remain readily operable.



### Warning

- Never remove the casing of this apparatus.
- Never lubricate any part of this apparatus.
- Never place this apparatus on other electrical equipment.
- Keep this apparatus away from direct sunlight, naked flames or heat.
- Ensure that you always have easy access to the power cord, plug or adaptor to disconnect this apparatus from the power.

### Information about the use of batteries:



### Caution

- Risk of leakage: Only use the specified type of batteries. Do not mix new and used batteries. Do not mix different brands of batteries. Observe correct polarity. Remove batteries from products that are not in use for a longer period of time. Store batteries in a dry place.
- Risk of injury: Wear gloves when handling leaking batteries. Keep batteries out of reach of children and pets.
- Risk of explosion: Do not short circuit batteries. Do not expose batteries to excessive heat. Do not throw batteries into the fire. Do not damage or disassemble batteries. Do not recharge non-rechargeable batteries.
- Risk of swallowing batteries: The product/remote control may contain a coin type battery, which can be swallowed. Keep the battery out of reach of children at all times!

Risk of overheating! Never install this apparatus in a confined space. Always leave a space of at least four inches around this apparatus for ventilation. Ensure curtains or other objects never cover the ventilation slots on this apparatus.

## Hearing safety



### Listen at a moderate volume.

- Using headphones at a high volume can impair your hearing. This product can produce sounds in decibel ranges that may cause hearing loss for a normal person, even for exposure less than a minute. The higher decibel ranges are offered for those that may have already experienced some hearing loss.
- Sound can be deceiving. Over time your hearing 'comfort level' adapts to higher volumes of sound. So after prolonged listening, what sounds 'normal' can actually be loud and harmful to your hearing. To guard against this, set your volume to a safe level before your hearing adapts and leave it there.

### To establish a safe volume level:

- Set your volume control at a low setting.
- Slowly increase the sound until you can hear it comfortably and clearly, without distortion.

### Listen for reasonable periods of time:

- Prolonged exposure to sound, even at normally 'safe' levels, can also cause hearing loss.
- Be sure to use your equipment reasonably and take appropriate breaks.

### Be sure to observe the following guidelines when using your headphones.

- Listen at reasonable volumes for reasonable periods of time.

- Be careful not to adjust the volume as your hearing adapts.
- Do not turn up the volume so high that you can't hear what's around you.
- You should use caution or temporarily discontinue use in potentially hazardous situations.

## Notice

Any changes or modifications made to this device that are not expressly approved by WOOX Innovations may void the user's authority to operate the equipment.

## Compliance

# CE 0560

Hereby, WOOX Innovations declares that this product is in compliance with the essential requirements and other relevant provisions of Directive 1999/5/EC. You can find the Declaration of Conformity on [www.philips.com/support](http://www.philips.com/support).

**This apparatus includes this label:**



**Class II equipment symbol:**



CLASS II apparatus with double insulation, and no protective earth provided.

---

## Care of the environment



Your product is designed and manufactured with high quality materials and components, which can be recycled and reused.



When this crossed-out wheeled bin symbol is attached to a product it means that the product is covered by the European Directive 2002/96/EC.

Please inform yourself about the local separate collection system for electrical and electronic products.

Please act according to your local rules and do not dispose of your old products with your normal household waste. Correct disposal of your old product helps to prevent potential negative consequences for the environment and human health.



Your product contains batteries covered by the European Directive 2006/66/EC, which cannot be disposed with normal household waste. Please inform yourself about the local rules on separate collection of batteries because correct disposal helps to prevent negative consequences for the environmental and human health.

### Environmental information

All unnecessary packaging has been omitted. We have tried to make the packaging easy to separate into three materials: cardboard (box), polystyrene foam (buffer) and polyethylene (bags, protective foam sheet.)

Your system consists of materials which can be recycled and reused if disassembled by a specialized company. Please observe the

local regulations regarding the disposal of packaging materials, exhausted batteries and old equipment.

---

## Trademark notice

Philips and the Philips' Shield Emblem are registered trademarks of Koninklijke Philips N.V. and are used by WOOX Innovations Limited under license from Koninklijke Philips N.V.™

### Bluetooth

The Bluetooth® word mark and logos are registered trademarks owned by Bluetooth SIG, Inc. and any use of such marks by WOOX Innovations is under license.



© 2013 CSR plc and its group companies. The aptX® mark and the aptX logo are trade marks of CSR plc or one of its group companies and may be registered in one or more jurisdictions.



The N Mark is a trademark or registered trademark of NFC Forum, Inc. in the United States and in other countries.

---

## Copyright

Specifications are subject to change without notice. WOOX reserves the right to change products at any time without being obliged to adjust earlier supplies accordingly.

### Note

- The type plate is located on the back of the system.

## 2 Your Bluetooth Micro music system

Congratulations on your purchase, and welcome to Philips! To fully benefit from the support that Philips offers, register your product at [www.philips.com/welcome](http://www.philips.com/welcome).

If you contact Philips, you will be asked for the model and serial number of this product. The model number and serial number are on the back of the main unit. Write the numbers here:

Model No. \_\_\_\_\_

Serial No. \_\_\_\_\_

---

### What's in the box

Check and identify the contents of your package:

- Main unit
- Remote control and two AAA batteries
- FM antenna
- AC power adaptor
- Printed materials

---

### Introduction

**With this device, you can:**

- enjoy audio from discs, Bluetooth-enabled devices, USB storage devices, or other external devices;
- listen to FM radio stations.

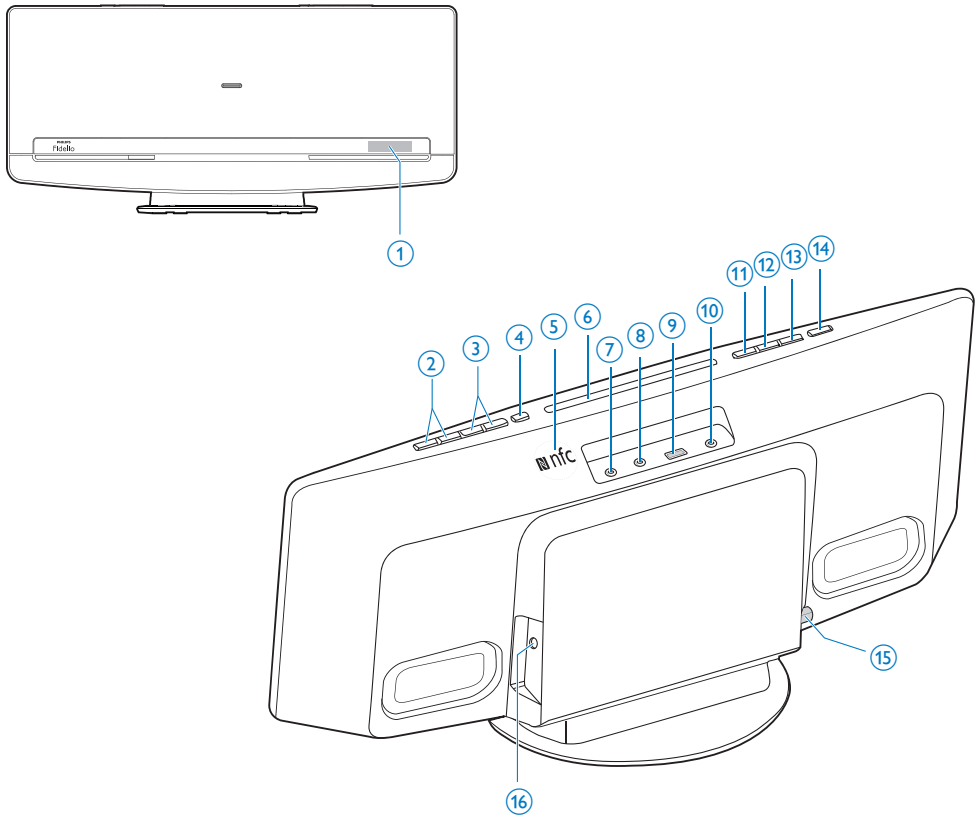
**You can enrich sound output with these sound effects:**

- Digital Sound Control (DSC)
- DBB (Dynamic Bass Boost)
- Full sound






**The device supports these media formats:**



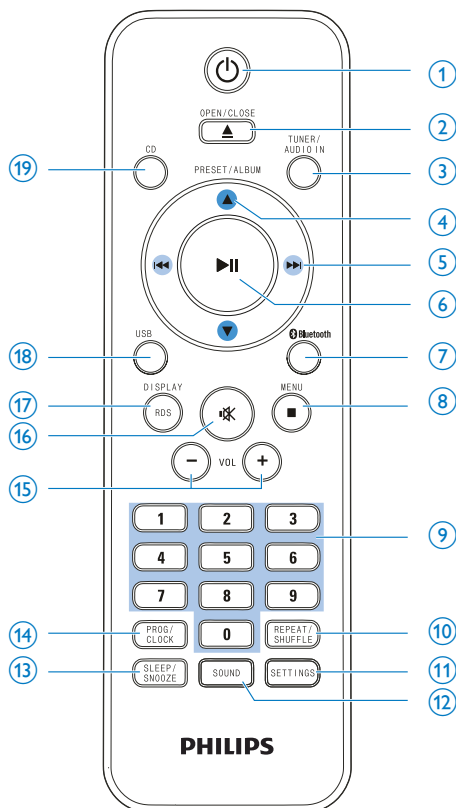
## Overview of the main unit

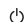


- ① **Display panel**
  - Show the current status of the device.
- ② **VOL+/VOL-**
  - Increase or decrease the volume level.
- ③ **⏮/⏭**
  - Skip to the previous or next track.
  - Press and hold to search within a track.
  - Tune to a radio stations.
- ④ **⏏**
  - Press to eject the disc from the disc compartment.
- ⑤ **NFC area**
  - Touch with an NFC compatible device to set up Bluetooth connection automatically.
- ⑥ **Disc compartment**
- ⑦ **AUDIO-IN**
  - Connect to the 3.5mm audio output socket of an external device.
- ⑧ **Bluetooth SETUP button/indicator**
  - (Press and hold) remove the existing pairing information.
  - Indicate the Bluetooth connection status.

- ⑨ 
  - Connect a USB storage device.
- ⑩ 
  - Connect a headphone with a 3.5-mm connector.
- ⑪ 
  - Stop music play.
- ⑫ 
  - Start, pause, or resume play.
- ⑬ **SOURCE**
  - Press repeatedly to select an audio source.
- ⑭  **button/indicator**
  - Turn on the device.
  - Switch the device to eco power standby mode or normal standby mode.
  - Indicate the power status.
- ⑮ **DC IN**
  - Connect to the AC power adaptor.
- ⑯ **FM ANT**
  - Connect to the FM antenna.

## Overview of the remote control



- ① 
  - Turn on the device.
  - Switch the device to eco power standby mode or normal standby mode.
- ② **OPEN/CLOSE ▲**
  - Press to eject the disc from the disc compartment.
- ③ **TUNER/AUDIO IN**
  - Switch the source between FM tuner and the 3.5mm audio input.



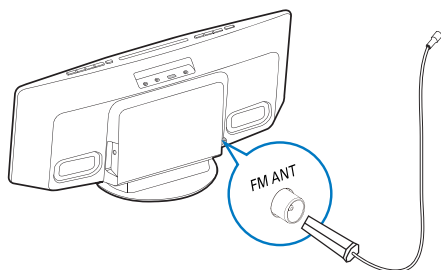
- ④ **PRESET/ALBUM ▲ / ▼**
  - Skip to the previous or next album.
  - Select a preset radio station.
- ⑤ **⏮ / ⏭**
  - Skip to the previous or next track.
  - Press and hold to search within a track.
  - Tune to a radio station.
- ⑥ **▶ ||**
  - Start, pause, or resume play.
- ⑦ **📶 Bluetooth**
  - Switch to the Bluetooth source.
- ⑧ **MENU/ ■**
  - Stop music play.
- ⑨ **Numeric keypad**
- ⑩ **REPEAT/SHUFFLE**
  - Select a play mode.
- ⑪ **SETTINGS**
  - Access the menu of system settings.
- ⑫ **SOUND**
  - Access the sound setting for DSC, DBB, and full sound control.
- ⑬ **SLEEP /SNOOZE**
  - Set the sleep timer or alarm timer.
- ⑭ **PROG/CLOCK**
  - Program radio stations.
  - Set the clock.
- ⑮ **VOL +/-**
  - Increase or decrease the volume level.
- ⑯ **🔇**
  - Mute or restore volume.
- ⑰ **DISPLAY/RDS**
  - Display play information.
  - For selected FM radio stations: display RDS information.
- ⑱ **USB**
  - Select the USB source.
- ⑲ **CD**
  - Switch to the CD source.

## 3 Before use

### Connect the FM antenna

#### Note

- For optimal reception, fully extend the antenna and adjust its position, or connect an outdoor antenna.
- This product does not support MW (medium wave) radio reception.

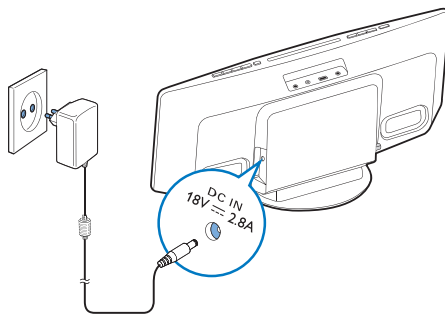


- Connect the FM antenna to the **FM ANT** socket on the back panel.

### Connect power

#### Caution

- Risk of product damage! Make sure that the power supply voltage matches the voltage printed on the back of the main unit.
- Risk of electric shock! When you unplug the AC power adaptor; always pull the plug, never the cord.
- Before you connect the AC power adaptor; make sure that you have completed all the other connections.



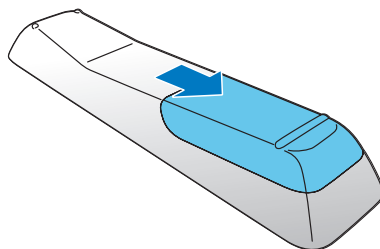
- Connect the AC power adaptor to
  - the **DC IN** socket on the back panel,
  - and
  - the wall outlet.

### Install/replace the remote control batteries

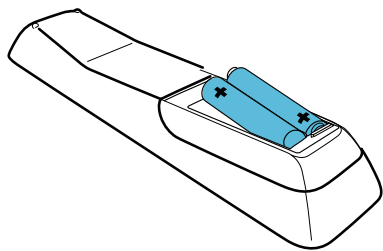
#### Caution

- Risk of explosion! Keep batteries away from heat, sunshine or fire. Never discard batteries in fire.

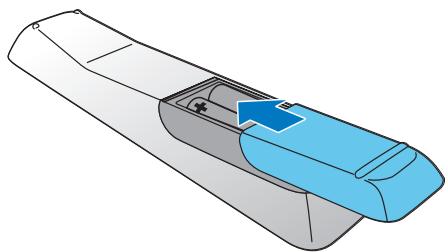
- 1 Open the battery compartment.



- 2 Insert 2 AAA batteries with correct polarity (+/-) as indicated.



3 Close the battery compartment.



#### Note

- Before you press any function button on the remote control, first select the correct source with the remote control instead of the main unit.
- If you do not use the remote control in a coming long time, remove the batteries.
- For better reception, point the remote control directly at the IR sensor on the front of the main unit.

# 4 Get started





## Caution



- Use of controls or adjustments or performance of procedures other than herein may result in hazardous radiation exposure or other unsafe operation.

## Know the LED indicator status

### LED indicator in the button

Indicator	Status
 (Solid)	In standby mode
 (Off)	In operation or eco power standby mode

### LED indicator in the Bluetooth SETUP button

Indicator	Status
 (Blinking)	Ready for Bluetooth pairing
 (Solid)	Connected through Bluetooth

## Set clock



## Note

- During setting, if no action is taken within 90 seconds, the device exits clock setting without saving the previous operations.
- You can also enter the hour and minute digits with the numeric keypad.

- 1 In normal standby mode, press **PROG/CLOCK** to activate clock setting.  
↳ **24HOUR** (24-hour time format) blinks.
- 2 Press **◀◀/▶▶** to select **24HOUR** or **12HOUR** (12-hour time format), and then press **PROG/CLOCK** to confirm.  
↳ The hour digits blink.  
↳ If you select **12HOUR** as the time format, **PM** or **AM** is displayed.


- 3 Press **◀◀/▶▶** repeatedly to set the hour digits.
- 4 Press **PROG/CLOCK** to confirm.  
↳ The minute digits blink.
- 5 Press **◀◀/▶▶** repeatedly to set the minute digits.
- 6 Press **PROG/CLOCK** to confirm the clock setting.  
↳ The set clock is displayed.




## Tip

- You can also synchronize the system clock with an RDS radio station that transmits time signals (see 'Synchronize clock with RDS' on page 15).


## Turn on

- Press .  
↳ The unit switches to the last selected source.

## Switch to standby mode

- Press  again to switch the unit to standby mode.  
↳ The clock (if set) is displayed on the panel.

### To switch to ECO standby mode:


- Press and hold  for more than three seconds.  
↳ The display panel is dimmed.



## Note

- The unit switches to Eco Power Standby mode after 15 minutes in standby mode.

### To switch between standby mode and ECO standby mode:

- Press and hold  for more than three seconds.

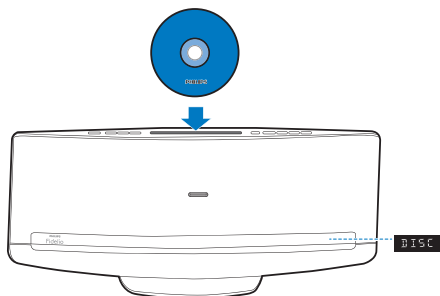
## 5 Play

### Play a disc



#### Caution

- Never insert any object other than a disc of 12-cm diameter into the disc compartment.



- 1 Press **SOURCE** repeatedly to switch the source to **DISC**.
  - You can also press **CD** on the remote control to switch the source.
- 2 Insert a disc into the disc compartment with the printed side facing you.
  - ↳ Play starts automatically after a few seconds.
  - If play does not start automatically, Press **▶||** to start play.

### Play from a USB storage device

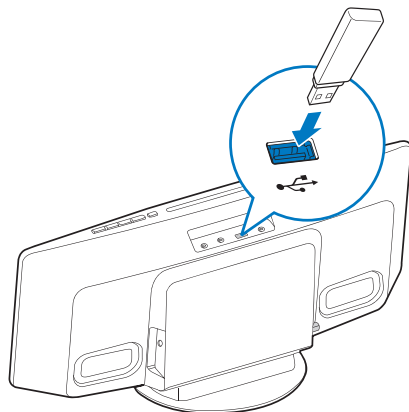
This device plays .mp3 and .wma files that are copied onto a supported USB storage device:


- Flash drive
- Memory card reader
- HDD: hard disc drive (This product can detect only a portable HDD with USB power peak current no more than 500 mA.)



#### Note

- WOOX Innovations does not guarantee compatibility with all USB storage devices.
- NTFS (New Technology File System) file system is not supported.



- 1 Connect the USB storage device to the  socket.
- 2 Press **SOURCE** repeatedly to switch the source to **USB**.
  - You can also press **USB** on the remote control to switch the source.
  - ↳ Play starts automatically.

If play does not start automatically,

- 1 Press **▲** / **▼** to select a folder.
- 2 Press **◀◀** / **▶▶** to select a file.
- 3 Press **▶||** to start play.

### Control play

During play, follow the instructions below to control play.

Buttons	Functions
<b>▶  </b>	Pause or resume play.
<b>■</b>	Stop play.

Buttons	Functions
⏮ / ⏭	Skip to the previous or next track. Press and hold to rewind a track or search forward fast within a track.
▲ / ▼	Skip to the previous or next album when one or more album exit.
<div> <div>1</div> <div>2</div> <div>3</div> <div>4</div> <div>5</div> <div>6</div> <div>7</div> <div>8</div> <div>9</div> <div>0</div> </div>	Enter the number of a track to play it.
REPEAT/SHUFFLE	Select an available play mode. <ul style="list-style-type: none"> <li>• <b>RPT 1</b>: repeat the current track</li> <li>• <b>RPT ALL</b>: repeat all tracks</li> <li>• <b>SHUFFLE</b>: play tracks randomly</li> <li>• <b>NORMAL</b>: play tracks in sequence</li> </ul>

## Play from Bluetooth-enabled devices

Note

- The effective operation range between the speaker and your Bluetooth enabled device is approximately 10 meters (30 feet).
- Any obstacle between the speaker and the Bluetooth enabled device can reduce the operational range.
- Compatibility with all Bluetooth devices is not guaranteed.
- The speaker can memorize up to 8 previously connected Bluetooth devices.

To enjoy music through the speaker wirelessly, you need to pair your Bluetooth enabled device with the speaker.  
Choose your best Bluetooth pairing method based on the preconditions listed below.

Precondition	Pairing method
Your Bluetooth device supports both NFC (Near Field Communication) and A2DP (Advanced Audio Distribution Profile).	Choose Option 1 (recommended) or Option 2.
Your Bluetooth device only supports A2DP (Advanced Audio Distribution Profile).	Choose Option 2.

- Before pairing and connection, you need to:

①

press **SOURCE** on the speaker repeatedly to select the Bluetooth source.

### Pair and connect

**Option 1: Pair and connect through NFC**  
Near Field Communication (NFC) is a technology that enables short-range wireless communication between various NFC compatible devices, such as mobile phones and IC tags.  
With the NFC function, data communication can be achieved easily just by touching the relevant symbol or designated location on NFC compatible devices.

Note

- Compatibility with all NFC devices is not guaranteed.

1

Enable the NFC feature on your Bluetooth enabled device (see the user manual of the device for details).

2

Touch the NFC area of the external device with the NFC area of the speaker until you hear a beep.

➡

After successful pairing and connection, the indicator turns solid blue.

## Option 2: Pair and connect manually

- 1 On the Bluetooth enabled device, search for Bluetooth devices that can be paired (see the user manual of the device).
- 2 Select '**Philips BTM8010**' on your Bluetooth enabled device and if necessary input '0000' as the pairing password.
  - ↳ After successful pairing and connection, the **Bluetooth SETUP** indicator on the top of the speaker turns solid blue, and the speaker beeps.

---

## Stream music through Bluetooth

- Play audio on the Bluetooth device connected to the speaker:
  - ↳ Audio streams from your Bluetooth enabled device to the speaker.



### Tip

- If the Bluetooth enabled device also supports AVRCP (Audio Video Remote Control Profile), you can use some basic operation buttons of the speaker (such as the play/pause, stop and previous/next buttons) to control music play.

### To disconnect the Bluetooth-enabled device:

- Deactivate Bluetooth on your device; or
- Move the device beyond the communication range.

### To clear Bluetooth pairing history:

- Press and hold **Bluetooth SETUP** on the speaker for three seconds.
  - ↳ The current Bluetooth connection is disconnected.

## 6 Listen to FM radio

### Tune to an FM radio station

#### Note

- Make sure that you have connected and fully extended the FM antenna.

- 1 Press **SOURCE** or **TUNER/AUDIO IN** repeatedly to switch the source to FM tuner.  
↳ **FM** and the current frequency are displayed.
- 2 Press and hold **◀◀ / ▶▶** until **SEARCH +** or **SEARCH -** (Searching) is displayed.  
↳ The FM tuner tunes to a station with strong reception.
  - To tune to a station at a specific frequency, press **◀◀ / ▶▶** repeatedly until the desired frequency is displayed.

### Program radio stations automatically

#### Note

- You can program a maximum of 20 preset radio stations.
- Press and hold **PROG/CLOCK** until **AUTO SRH** (automatic search) is displayed.  
↳ All available stations are programmed in the order of waveband reception strength.  
↳ The first programmed radio station is broadcast automatically.

### Program radio stations manually

#### Note

- You can program a maximum of 20 preset radio stations.
- To overwrite a programmed radio station, store another one with its sequence number.

- 1 Tune to a radio station.
- 2 Press **PROG/CLOCK** to activate programming.  
↳ **PXX** (XX indicates the sequence number) blinks.
- 3 Press **PRESET/ALBUM ▲ / ▼** to allocate a sequence number from 01 to 20 to this radio station, and then press **PROG/CLOCK** to confirm.  
↳ The preset sequence number and the frequency of this radio station are displayed.
- 4 Repeat steps 1-3 to program more stations.

### Tune to a preset radio station

- Press **PRESET/ALBUM ▲ / ▼** to select the sequence number of that preset radio station.
- Enter its sequence number with numeric keypad.



---

## Display RDS information

RDS (Radio Data System) is a service that allows FM stations to show additional information.

- 1 Tune to an RDS radio station.
- 2 Press **DISPLAY/RDS** repeatedly to scroll through available information:
  - Station name
  - Program type such as **NEWS** (news), **SPORT** (sport), **POP M** (pop music)...
  - Text messages
  - RDS clock
  - Frequency

---

## Synchronize clock with RDS

You can synchronize system clock with an RDS radio station.

- 1 Tune to an RDS radio station that transmits time signals.
- 2 Press and hold **DISPLAY/RDS** until **CT SYNC** is displayed.
  - ↳ The system reads RDS time automatically.
  - ↳ If no time signal is received, **NO CT** is displayed.



### Note

- The accuracy of the clock depends on the RDS radio station.

## 7 Other features

### Set alarm timer

You can use this system as an alarm clock.

#### Note

- Make sure that you have set the clock correctly.
- If other alarm sources are unavailable, this product switches to FM mode automatically.

- 1 In normal standby mode, press and hold **SLEEP/SNOOZE** until **DISC** blinks.
- 2 Press **◀◀/▶▶** repeatedly to select an alarm source.
- 3 Press **SLEEP/SNOOZE** to confirm.  
↳ The hour digits blink.
- 4 Press **◀◀/▶▶** repeatedly to set the hour digits, and then press **SLEEP/SNOOZE** to confirm.  
↳ The minute digits blink.
- 5 Press **◀◀/▶▶** to set the minute digits, and then press **SLEEP/SNOOZE** to confirm.  
↳ **A** (alarm) and the current time is displayed.
  - To check the alarm time, press **SLEEP/SNOOZE** in normal standby mode.
  - To deactivate the alarm timer; press **SLEEP/SNOOZE** repeatedly in normal standby mode until **A** (alarm) disappears.
  - To re-activate the alarm timer; press **SLEEP/SNOOZE** repeatedly in normal standby mode until **A** (alarm) is displayed.
  - To pause the alarm, press **SLEEP/SNOOZE** once. After five minutes, the alarm sounds again.
  - To stop the alarm, press and hold **SLEEP/SNOOZE** until **ALM STOP** is displayed.

#### Tip

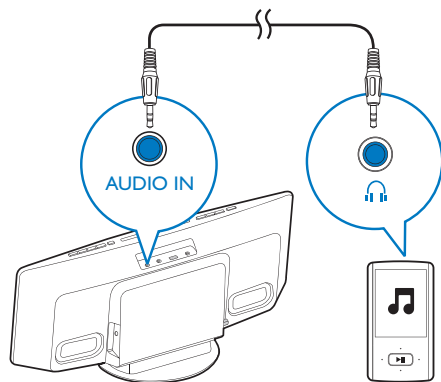
- You can set the hour/minute digits by the numeric keypad.

### Set sleep timer

- In operation mode, press **SLEEP/SNOOZE** repeatedly to select a preset period (30, 60, 90, or 120 minutes).
- To deactivate the sleep timer; press **SLEEP/SNOOZE** repeatedly until **SLEEPOFF** is displayed.

### Listen to an external audio device


You can listen to an external audio device, for example, MP3 player through this product.



- 1 Press **TUNER/AUDIO IN** repeatedly to switch the source to **AUDIO-IN**.
- 2 Connect a 3.5mm audio cable to
  - the **AUDIO-IN** socket on the top of the device, and
  - the headphone socket on the external device (for example, MP3 player).
- 3 Play the external device. (See the user manual of external device).

---

## Listen through headphone

- Plug a headphone with a 3,5mm plug into the  socket on the top panel.

## 8 Adjust sound

The following operations are applicable to all supported media.

---

### Adjust volume level

- On the remote control, press **VOL +/-** repeatedly.
- On the main unit, press **VOL+/VOL-** repeatedly.

---

### Mute sound

- Press **M** to mute or restore the sound.

---

### Adjust default sound settings

- 1 Press **SOUND** repeatedly to select one of the setting menus.
  - **DSC**: Select a preset sound equalizer.
  - **DBB**: Select a DBB sound effect or disable it.
  - **FULL SOUND**: Enable to enjoy full-range sound output.
- 2 Press **◀◀/▶▶** to select an option.

## 9 Adjust system settings

- 1 Press **SETTINGS** to access the menu of system settings.  
↳ **DIM** is displayed.
- 2 Press **▲ / ▼** to select a menu option.
  - **DIM**, **FAC RST**, or **VERSION**
- 3 Press **▶▶I** to view the system status or change system settings.
  - To return to the upper-level menu, press **I◀◀**.

Menu Option	Function	Remarks
DIM	Select a brightness level of VFD screen.	1) Select <b>DIM</b> , and then press <b>▶▶I</b> . 2) Press <b>▲ / ▼</b> to select a bright level.
FAC RST	Rest the system to factory default settings.	1) Select <b>FAC RST</b> . 2) Press <b>▶▶I</b> to confirm.
VERSION	Display the firmware version.	1) Select <b>VERSION</b> , and then press <b>▶▶I</b> . 2) Press <b>▲ / ▼</b> to select a version name. 3) Press <b>▶▶I</b> to display the current version.

# 10 Product information

## Note

- Product information is subject to change without prior notice.

## Specifications

### Amplifier

Total output power	2 × 20 W
Frequency response	63 - 14000 Hz, -3 dB
Signal-to-noise ratio	> 57 dBA
AUDIO IN	600 mV RMS

### Disc

Laser type	Semiconductor
Disc diameter	12 cm
Support discs	Audio CD, CD-R, CD-RW, MP3-CD, WMA-CD
Audio DAC	24 Bits / 44.1 kHz
Total harmonic distortion	< 1%

### Tuner

Tuning Range	FM: 87.5 - 108 MHz
Tuning grid	50 KHz
Sensitivity	
- Mono, 26dB S/N Ratio	<16 dBu
- Stereo, 46dB S/N Ratio	<45 dBu
Search Selectivity	<30 dBu
Total Harmonic Distortion	<3%

Signal to Noise Ratio	>45 dB
-----------------------	--------

### Speakers

Speaker Impedance	8 Ohm
Speaker Driver	2 X 2.75" full range speaker
Sensitivity	> 82 dB/m/W

### Bluetooth

Bluetooth version	V2.1 + EDR
Frequency band	2.4GHz ~ 2.48GHz ISM Band
Range	10m (free space)

### General

AC power input	100-240 V~, 50-60 Hz, 2.0 A
Output of AC-DC power adaptor	18.0V =, 2.8 A
Model No. of AC-DC power adaptor	EFS05001800280EU
Trademark of AC-DC power adaptor	PHILIPS
Power consumption at standby mode	< 3.5 W
Power consumption at eco power standby mode	< 0.5 W
Dimensions (W × H × D)	500 × 234 × 164 mm
Net weight	3.0 kg

## USB playability information

### Compatible USB devices:

- USB flash memory (USB 2.0 or USB1.1)
- USB flash players (USB 2.0 or USB1.1)
- memory cards (requires an additional card reader to work with this unit)

### Supported formats:

- USB or memory file format FAT12, FAT16, FAT32 (sector size: 512 bytes)
- MP3 bit rate (data rate): 32-320 Kbps and variable bit rate
- WMA v9 or earlier
- Directory nesting up to a maximum of 8 levels
- Number of albums/ folders: maximum 99
- Number of tracks/titles: maximum 999
- ID3 tag v2.0 or later
- File name in Unicode UTF8 (maximum length: 128 bytes)

### Unsupported formats:

- Empty albums: an empty album is an album that does not contain MP3/WMA files, and will not be shown in the display.
- Unsupported file formats are skipped. For example, Word documents (.doc) or MP3 files with extension .dlf are ignored and not played.
- AAC, WAV, PCM audio files
- DRM protected WMA files (.wav, .m4a, .m4p, .mp4, .aac)
- WMA files in Lossless format

## Supported MP3 disc formats

- ISO9660, Joliet
- Maximum title number: 512 (depending on file name length)
- Maximum album number: 255
- Supported sampling frequencies: 32 kHz, 44.1kHz, 48 kHz
- Supported Bit-rates: 32~256 (kbps), variable bit rates

## RDS program types

NO TYPE	No RDS programme type
NEWS	News services
AFFAIRS	Politics and current affairs
INFO	Special information programs
SPORT	Sports
EDUCATE	Education and advanced training
DRAMA	Radio plays and literature
CULTURE	Culture, religion and society
SCIENCE	Science
VARIED	Entertainment programs
POP M	Pop music
ROCK M	Rock music
MOR M	Light music
LIGHT M	Light classical music
CLASSICS	Classical music
OTHER M	Special music programs
WEATHER	Weather
FINANCE	Finance
CHILDREN	Children's programs
SOCIAL	Social Affairs
RELIGION	Religion
PHONE IN	Phone In
TRAVEL	Travel
LEISURE	Leisure
JAZZ	Jazz Music
COUNTRY	Country Music
NATION M	National Music
OLDIES	Oldies Music
FOLK M	Folk Music
DOCUMENT	Documentary
TES	Alarm Test
ALARM	Alarm

# 11 Troubleshooting



## Warning

- Never remove the casing of this product.

To keep the warranty valid, never try to repair the product yourself.

If you encounter problems when using this product, check the following points before requesting service. If the problem remains unsolved, go to the Philips Web page ([www.philips.com/support](http://www.philips.com/support)). When you contact Philips, make sure that the product is nearby and the model number and serial number are available.

Problem	Solution
No power.	Make sure that the power adaptor is securely connected to both the power supply and the device. Make sure that there is power at the AC outlet.
No sound or poor sound.	Adjust the volume. Disconnect the headphones. Make sure that you have select the correct audio source.
No response from the device.	Reconnect the power adaptor and wait about 15 seconds for this device to boot-up.

Problem	Solution
Remote control does not work.	Before you press any function button, select the correct source with the remote control instead of the main unit. Reduce the distance between the remote control and the main unit. Insert each battery with its polarity (+/- signs) aligned as indicated. Replace the batteries. Aim the remote control directly at the sensor on the front panel of the main unit.
No disc is detected.	Insert a disc of 12-cm diameter; never one of other sizes. Make sure that the label of the disc faces you. Wait until the moisture condensation at the lens is cleared. Replace or clean the disc. Make sure that the recordable disc is finalized and the format supported.
USB storage device is not supported.	Make sure that the USB storage device is compatible with the system. Try another one.
Cannot play some files on the USB storage device.	Make sure that the file format is supported. Make sure that the file quantity does not exceed the maximum.
Radio reception is poor.	Increase the distance between the system and other electrical appliances. Fully extend the antenna and adjust its position. Connect an outdoor FM antenna instead.
Timer does not work.	Set the clock correctly. Switch on the timer.



Problem	Solution
Clock/timer setting is erased.	Power is interrupted or cut off. Reset the clock/timer.
Music playback is unavailable on this speaker even after successful Bluetooth connection.	The Bluetooth device cannot be used to play music through this speaker wirelessly.
The audio quality is poor after connection with a Bluetooth-enabled device.	The Bluetooth reception is poor. Move the device closer to this speaker or remove any obstacle between them.
Failed to connect a Bluetooth enabled device with this speaker.	The device does not support the profiles required for this speaker.

Problem	Solution
	The Bluetooth function of the device is not enabled. Refer to the user manual of the device to find out how to enable the function.
	This speaker is not in pairing mode.
	This speaker is already connected with another Bluetooth enabled device. Disconnect that device and then try again.
	If you pair and connect through NFC, make sure that:
	<ol style="list-style-type: none"> <li><b>you have enabled both the Bluetooth and NFC features on your device.</b></li> <li><b>you have kept the NFC area of the device in touch with that of the speaker until you heard a beep.</b></li> </ol>
The paired mobile device connects and disconnects constantly.	The Bluetooth reception is poor. Move the device closer to this speaker or remove any obstacle between them.
	Some mobile phones may connect and disconnect constantly when you make or end calls. This does not indicate any malfunction of this speaker.
	For some devices, the Bluetooth connection may be deactivated automatically as a power-saving feature. This does not indicate any malfunction of this speaker.



Specifications are subject to change without notice

2013 © WOOX Innovations Limited. All rights reserved.

This product was brought to the market by WOOX Innovations Limited or one of its affiliates, further referred to in this document as WOOX Innovations, and is the manufacturer of the product. WOOX Innovations is the warrantor in relation to the product with which this booklet was packaged. Philips and the Philips Shield Emblem are registered trademarks of Koninklijke Philips N.V.

BTM8010\_12\_UM\_V2.0

