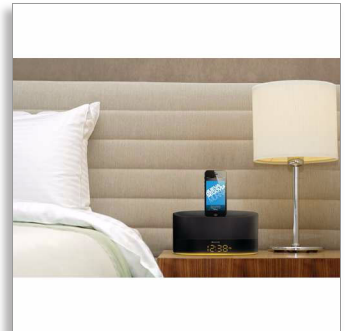




Philips  
docking speaker

DualDock  
for iPod/iPhone/iPad



DS1600

## Sound that fits your home for iPod/iPhone/iPad

The DS1600 docking speaker plays and charges all your iPod/iPhone/iPad with Philips DualDock via Lightning & 30pin connectors. It gives you full & rich sound and features a USB port for charging a second mobile device for added versatility.

### Surprisingly rich sound

- Rich omni-directional sound to fill your bedroom
- 2 Active drivers and bass pipe for balanced rich sound
- Shielding technology to block mobile phone interference

### Designed for your bedroom

- DualDock to charge & play Apple devices (Lightning & 30-pin)
- Elegant and compact design to fit on any bedside table
- Soft glow night light
- Auto synchronization of time or date when docked

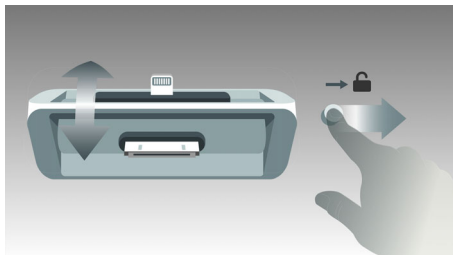
### Advanced versatility

- Charge second mobile device via USB port
- Free ClockStudio app for internet radio & other cool feature
- Audio-in for portable music playback

**PHILIPS**

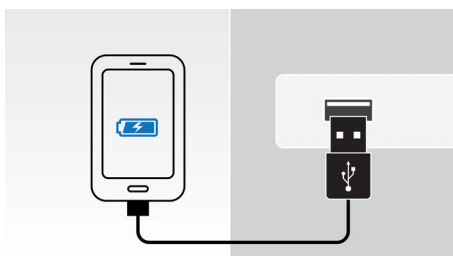
# Highlights

## DualDock to charge & play



The innovative Philips DualDock with Lightning and 30-pin connector can charge and play any Apple device. Created to meld sleek styling with effortless functionality, you can switch between either connector in a flash. Enjoy your favorite tunes no matter what Apple device you want to use.

## USB for second device



For added convenience, this speaker also boasts a USB port for charging a second mobile device even when your iPod/iPhone is docked.

## Auto clock/date sync

Docking station automatically synchronizes the clock or date with your iPod/iPhone/iPad when docked. Just press a button to switch between clock or date display.

## Free ClockStudio app



The free app adds an array of exclusive cool features to your docking speaker. You can check the weather, tell the time and even use your favorite images as wallpaper. ClockStudio also lets you listen to thousands of Internet radio stations worldwide. More updates on skin styles and new functions on the way.

## Audio-in



The Audio in connectivity allows direct playback of Audio in content from portable media players. Besides the benefit of enjoying your favorite music in the superior sound quality delivered by the audio system, the Audio in is also extremely convenient as all you have to do is to plug your portable MP3 player to the audio system.



# Specifications

## iPad compatibility

- via Lightning connector: iPad mini, iPad with Retina display
- via 30-pin connector: iPad, iPad 2

## iPhone compatibility

- via 30-pin connector: iPhone 3G, iPhone 3GS, iPhone 4, iPhone 4S
- Compatible with: iPhone 5, iPhone 6, iPhone 6 plus, iPhone 6S, iPhone 6S Plus, iPhone SE

## iPod compatibility

- via Lightning connector: iPod nano 7th generation, iPod touch 5th generation
- via 30-pin connector: iPod, iPod classic, iPod mini, iPod nano, iPod nano 1st generation, iPod nano 2nd generation, iPod nano 3rd generation, iPod nano 4th generation, iPod nano 5th generation, iPod nano 6th generation, iPod touch, iPod touch 2nd gen 8/16/32GB, iPod touch 2nd generation, iPod touch 3rd generation, iPod touch 4th generation, iPod with color display, iPod 5th generation

## iPod/iPhone/iPad App

- App name: ClockStudio, Free download from App store
- Compatibility: iPod touch, iPhone, iPad iOS 4.3 or later
- 7000+ Internet radio stations
- 5-day weather forecast
- Clock: analog display, digital display, digital display with slideshow background

## Sound

- Output power: 8 W RMS
- Sound system: stereo
- Volume control: up/down

## Connectivity

- Audio in (3.5mm)
- USB port: for charging second mobile device

## Convenience

- Clock: Digital, 24/12 hour display
- Date: MMDD/DDMM

## Dimensions

- Packaging dimensions (WxDxH): 127 x 261 x 187 mm
- Product dimensions (WxDxH): 96 x 225 x 143 mm

## Power

- Power supply: 100 - 240V AC, 50/60Hz



Issue date 2016-06-24

Version: 3.0.3

12 NC: 8670 001 05125  
EAN: 87 12581 69347 3

© 2016 Koninklijke Philips N.V.  
All Rights reserved.

Specifications are subject to change without notice.  
Trademarks are the property of Koninklijke Philips N.V.  
or their respective owners.

[www.philips.com](http://www.philips.com)