

Always there to help you
Register your product and get support at
www.philips.com/welcome

DCD1190

Question?
Contact
Philips



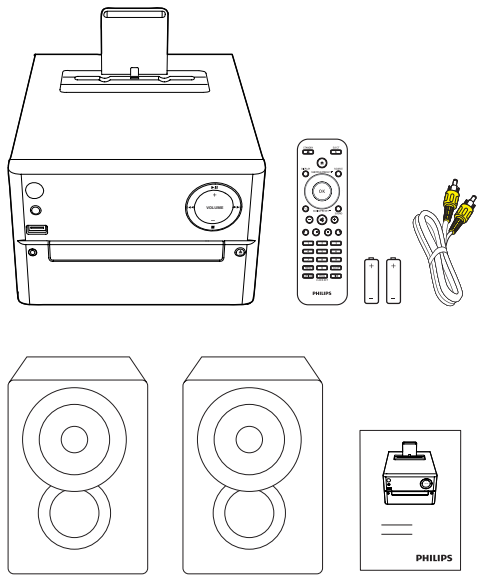
EN Short User Manual
ZH-CN 简明用户手册

PHILIPS

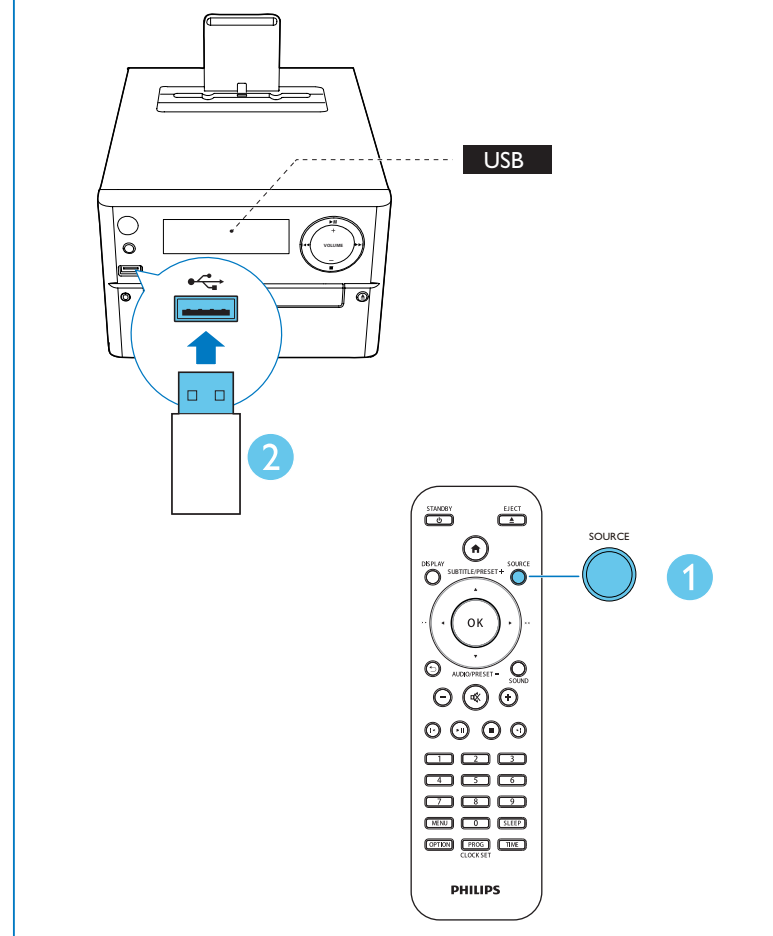
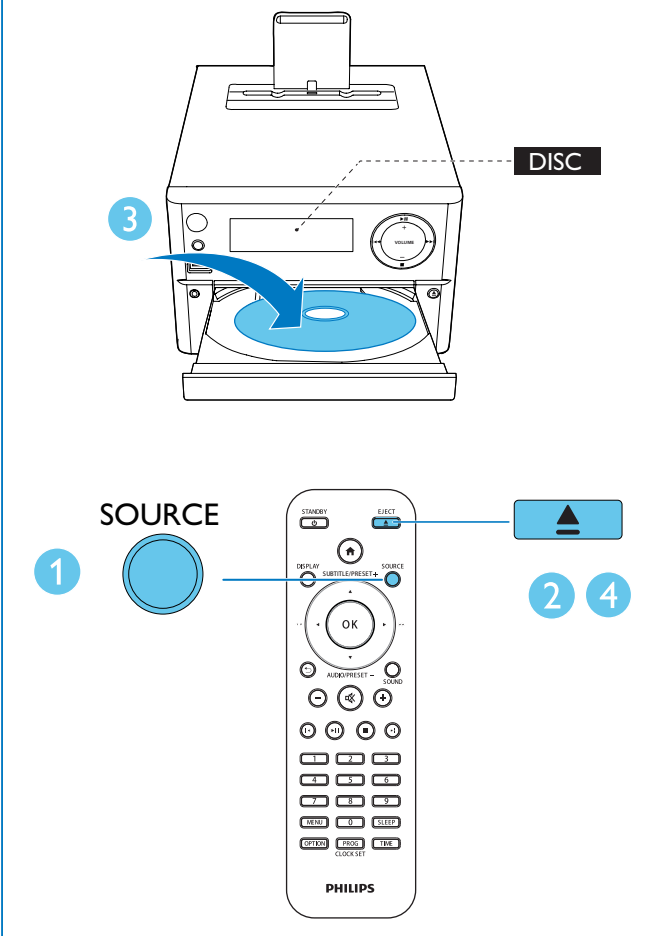
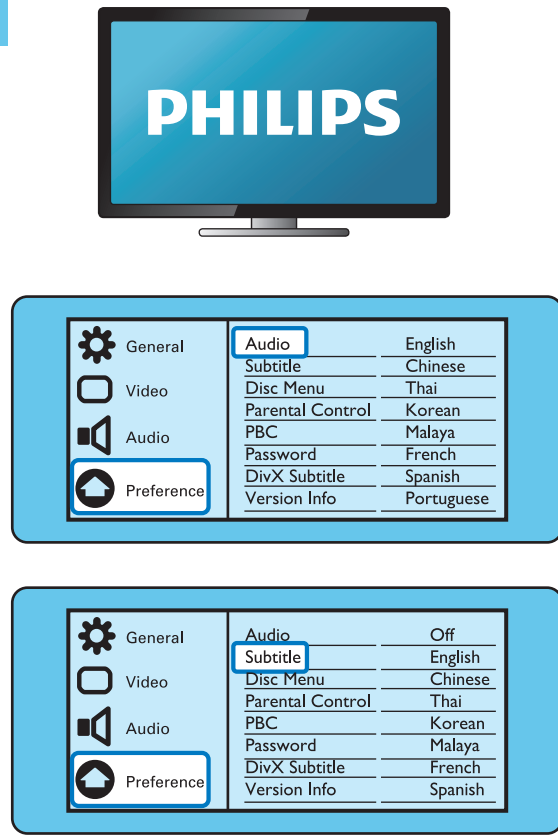
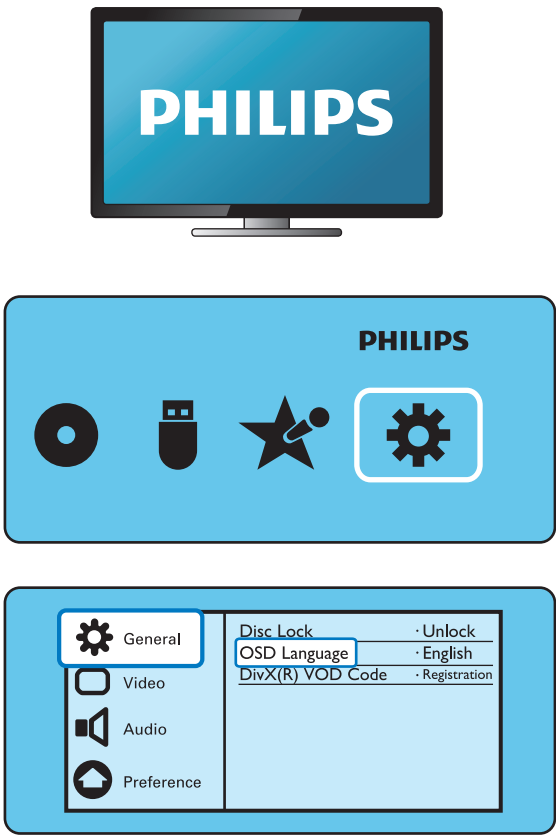
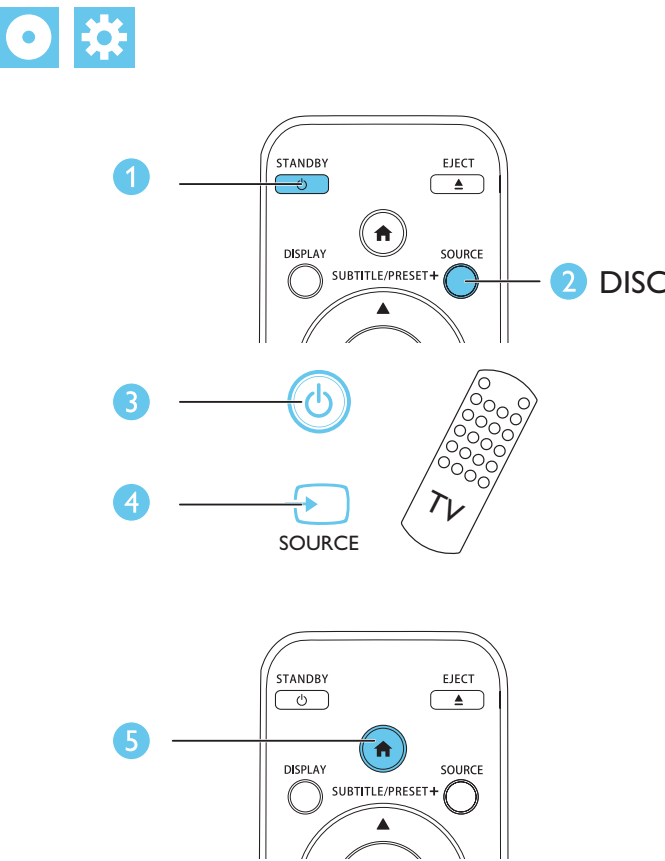
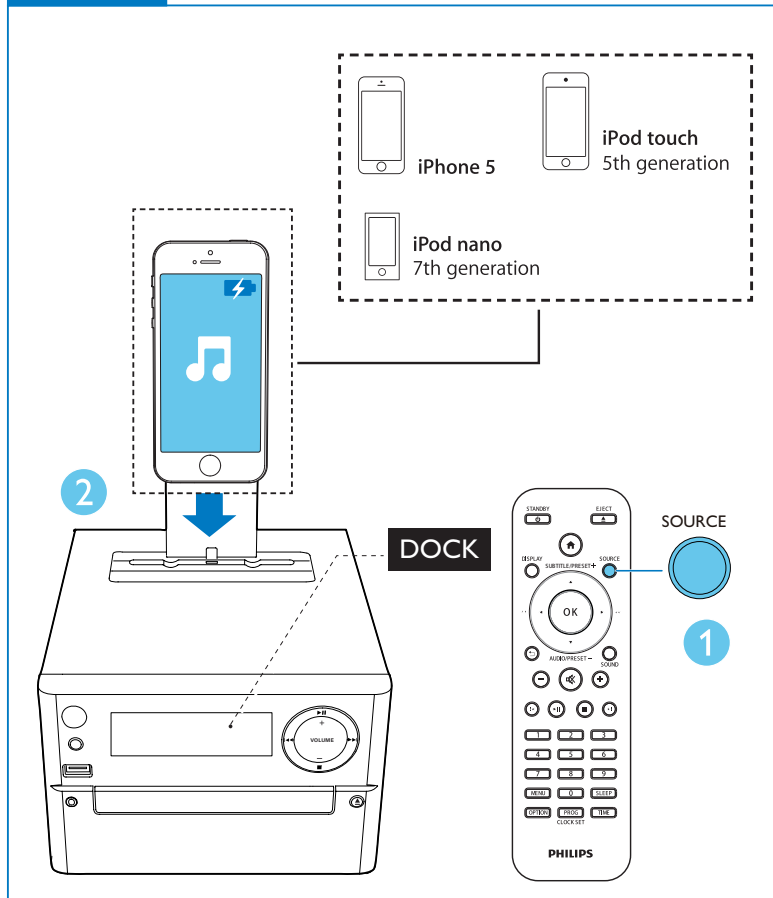
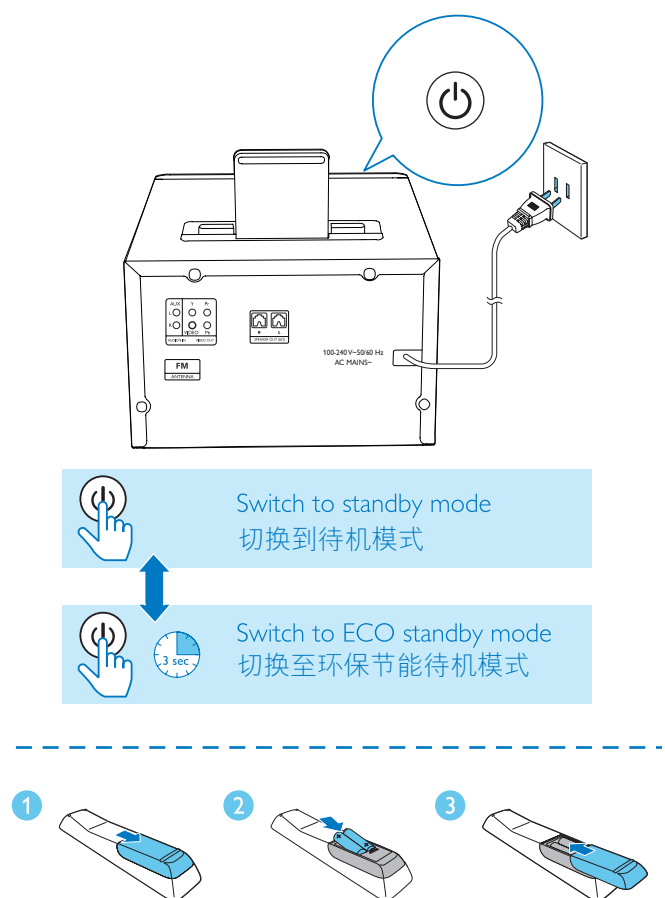
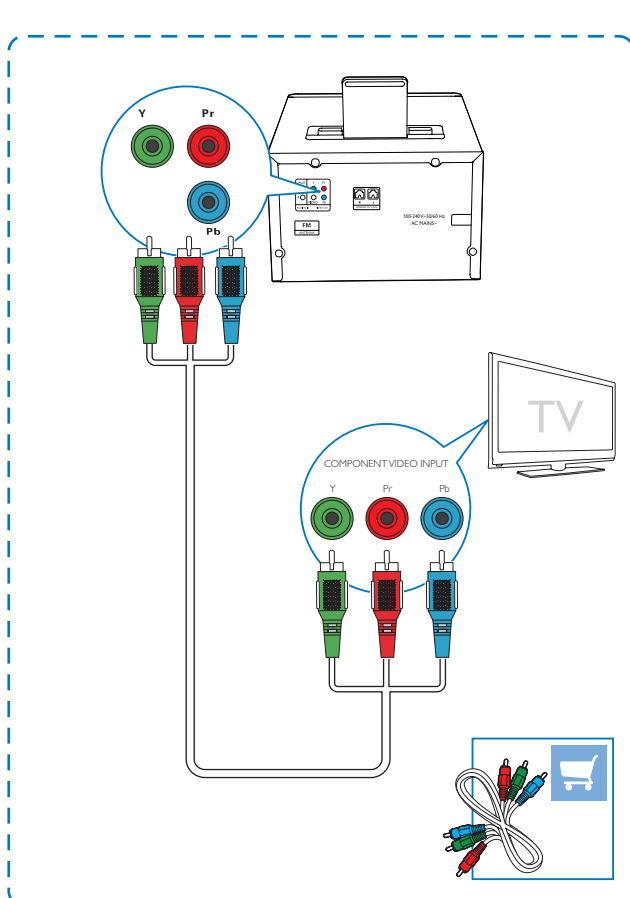
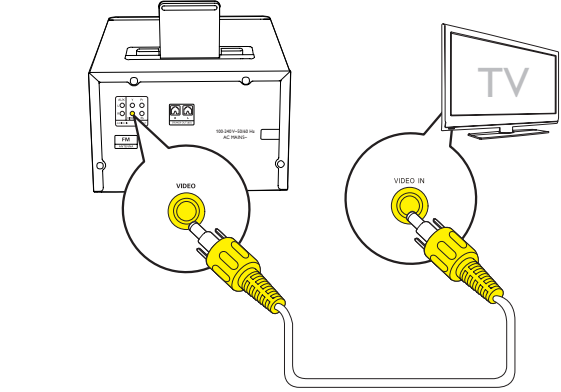
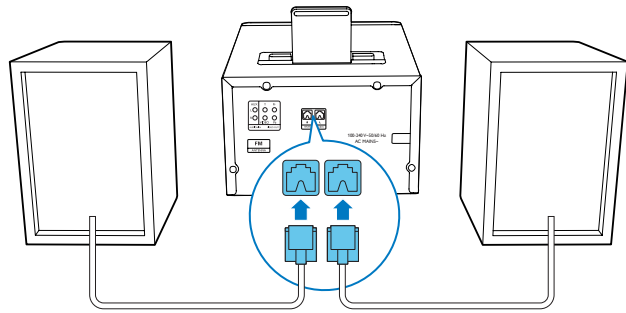


Specifications are subject to change without notice.
© 2013 Koninklijke Philips Electronics N.V.
All rights reserved.

DCD1190_93_Short User Manual_V1.0



Before using your product, read all accompanying safety information.
使用产品之前，请先阅读所有随附的安全信息。



Control play	
▲ / ▼	Select a folder.
◀ / ▶ (◀▶▶▶)	Fast backward/forward.
◀ / ▶	Skip to the previous or next title/chapter/track/file.
⏸	Pause or resume play.
■	Stop play.
+/-	Increase or decrease volume.
🔊	Mute or restore sound.
SOUND	Enrich sound effect with DSC: balanced, clear, powerful, warm, and bright.
DISPLAY	View playback information.

控制播放

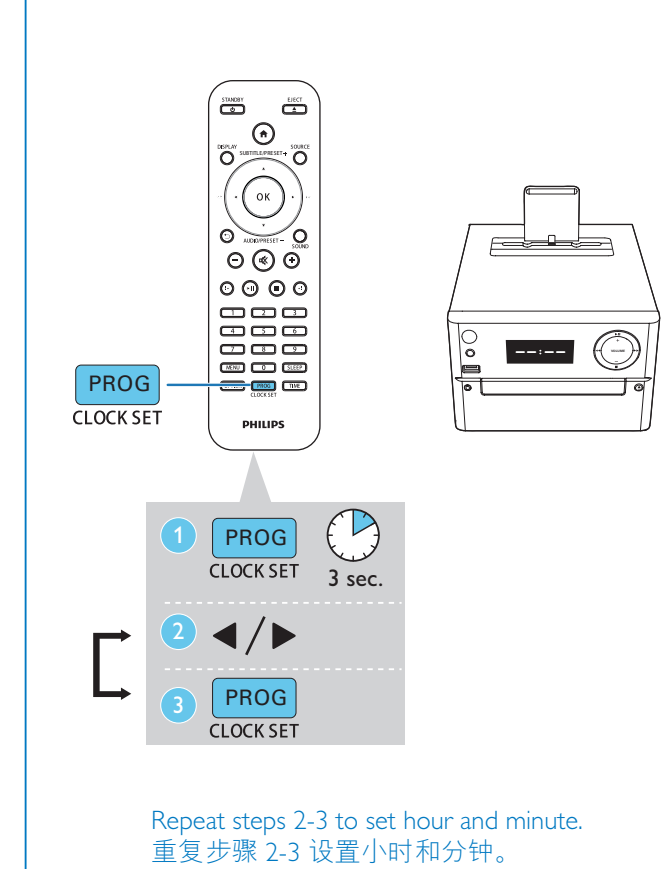
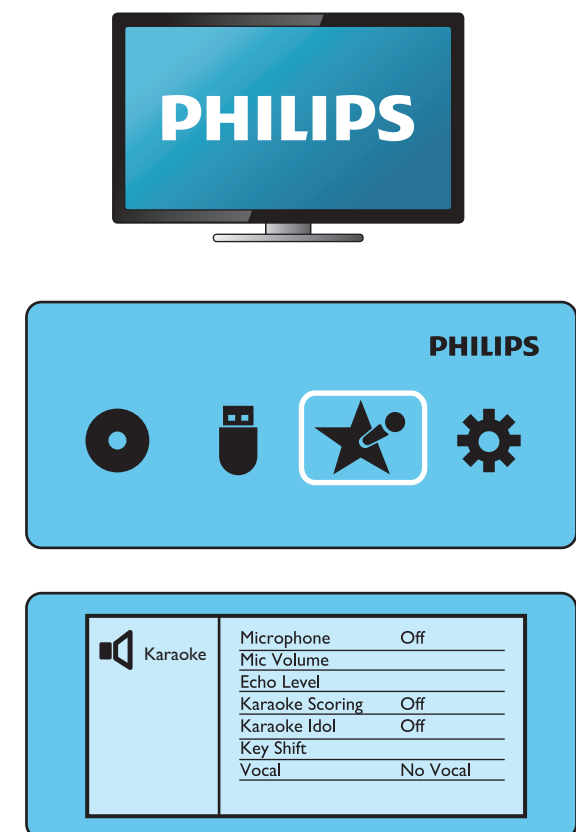
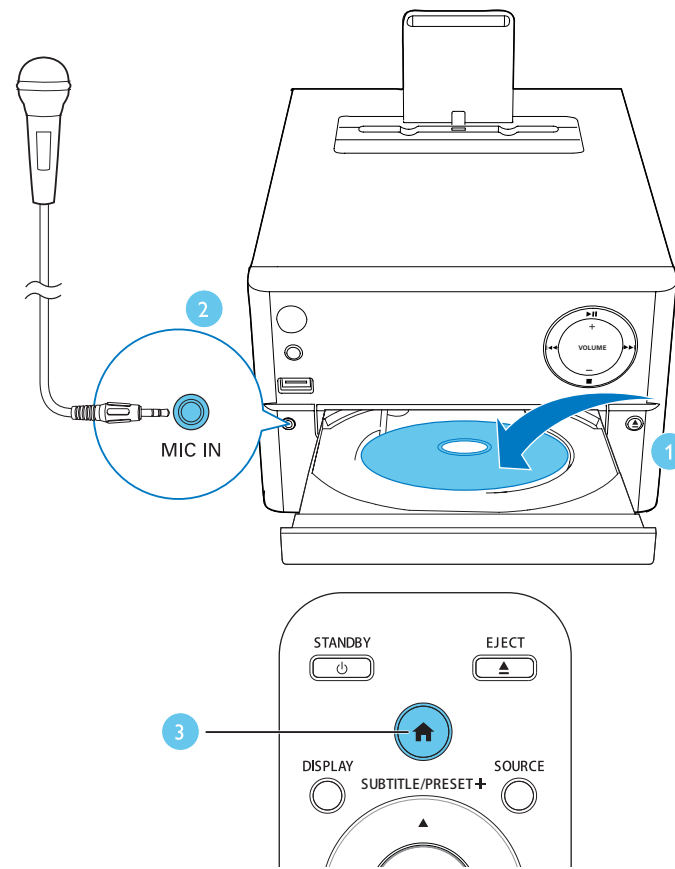
▲ / ▼	选择文件夹。
◀ / ▶ (◀▶▶▶)	选择音频文件。
◀ / ▶	跳至上一或下一标题/章节/曲目/文件。
⏸	暂停或继续播放。
■	停止播放。
+/-	增大或减小音量。
🔊	静音或恢复声音。
SOUND	通过 DSC 丰富音效：均衡、清晰、强劲、暖调和响亮。
DISPLAY	查看播放信息。

Play options

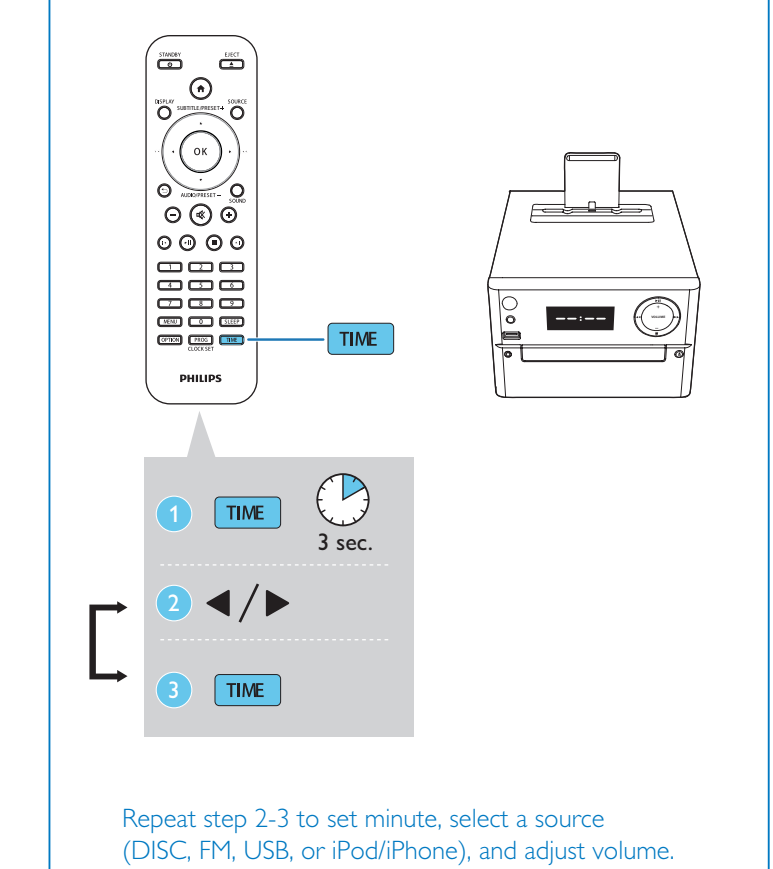
[PBC]	Turn PlayBack Control on/off.
[Aspect Ratio]	Select a picture display format to fit the TV screen.
[Angle]	Switch between camera angles.
[Microphone]	Turn on or off the microphone sound output.
[Karaoke Setup]	Increase or decrease the volume level and echo level of microphone input, and the key level of music.
[Vocal]	Select various Karaoke audio modes, or turn off the original vocal.
[Zoom]	During video play, zoom in/out to pan through the image.
[Repeat]	Choose a repeat play option or turn off the repeat function.
[GOTO]	During video play, specify a position to start play by entering the desired time or number.
[Slow Backward] & [Slow Forward]	During video play, select a slow backward/forward speed.

播放选项

[PBC]	打开/关闭播放控制。
[宽高比]	选择适合电视屏幕的画面显示格式。
[角度]	在不同的摄像机角度之间切换。
[麦克风]	打开或关闭麦克风声音输出。
[卡拉 OK 设置]	增大或减小麦克风输入的音量级别和回音级别以及音乐的音调级别。
[接唱]	选择各种卡拉 OK 音频模式，或关闭原声。
[缩放]	播放视频期间，放大/缩小以在图像上进行平移。
[重复播放]	选择重复播放选项或关闭重复功能。
[转到]	播放视频期间，通过输入所需的时间或数字，指定开始播放的位置。
[慢退] 和 [慢进]	播放视频期间，选择较慢的后退/前进速度。



Repeat steps 2-3 to set hour and minute.
重复步骤 2-3 设置小时和分钟。



Repeat step 2-3 to set minute, select a source (DISC, FM, USB, or iPod/iPhone), and adjust volume.
重复步骤 2-3 可设置分钟，选择来源 (DISC、FM、USB 或 iPod/iPhone)，然后调节音量。

