

Always there to help you

Register your product and get support at
www.philips.com/welcome



TCM350



User Manual

PHILIPS

Contents

1	Important	3
	Safety	3
	Care for your product	3
	Care of the environment	4
	Compliance	4
	Copyright	4
	Warranty	5

2	Your Micro Hi-Fi System	5
	Introduction	5
	What's in the box	5
	Overview of the main unit	6
	Overview of the remote control	7

3	Get started	8
	Place on a flat surface	8
	Prepare the remote control	8
	Connect power adapter	8
	Switch on	9

4	Play disc	9
	Play options	9

5	Adjust volume level and sound effect	10
	Adjust volume level	10
	Enhance bass	10
	Mute sound	10

6	Listen to the radio	11
	Tune to a radio station	11
	Program radio stations automatically	11
	Program radio stations manually	11
	Select a preset radio station	11

7	Other features	12
	Listen to an external device	12

8	Product information	12
	Specifications	12

9	Troubleshooting	13
----------	------------------------	-----------

1 Important

Safety

Risk of electric shock or fire!

- Never expose the product and accessories to rain or water. Never place liquid containers, such as vases, near the product. If liquids are spilt on or into the product, disconnect it from the power outlet immediately. Contact Philips Consumer Care to have the product checked before use.
- Never place the product and accessories near naked flames or other heat sources, including direct sunlight.
- Never insert objects into the ventilation slots or other openings on the product.
- Where the mains plug or an appliance coupler is used as the disconnect device, the disconnect device shall remain readily operable.
- Disconnect the product from the power outlet before lightning storms.
- When you disconnect the power cord, always pull the plug, never the cable.

Risk of short circuit or fire!

- Before you connect the product to the power outlet, ensure that the power voltage matches the value printed on the back of the product. Never connect the product to the power outlet if the voltage is different.
- Never expose the remote control or batteries to rain, water or excessive heat.
- Avoid force coming onto power plugs. Loose power plugs can cause arcing or fire.

Risk of injury or damage to the product!

- Visible and invisible laser radiation when open. Avoid exposure to beam.
- Do not touch the disc optical lens inside the disc compartment.

- Never place the product or any objects on power cords or on other electrical equipment.
- If the product is transported in temperatures below 5°C, unpack the product and wait until its temperature matches room temperature before connecting it to the power outlet.

Risk of overheating!

- Never install this product in a confined space. Always leave a space of at least four inches around the product for ventilation. Make sure that curtains or other objects never cover the ventilation slots on the product.

Risk of contamination!

- Remove the battery if it is exhausted or if the remote control is not to be used for an extended period of time.
- Batteries contain chemical substances, they should be disposed of properly.

Care for your product

- Do not insert any objects other than discs into the disc compartment.
- Do not insert warped or cracked discs into the disc compartment.
- Remove the discs from the disc compartment if you are not using the product for an extended period of time.
- Only use microfiber cloth to clean the product.



Warning

- Never remove the casing of this apparatus.

Care of the environment



Your product is designed and manufactured with high quality materials and components, which can be recycled and reused.



When this crossed-out wheeled bin symbol is attached to a product it means that the product is covered by the European Directive 2002/96/EC.

Please inform yourself about the local separate collection system for electrical and electronic products.

Please act according to your local rules and do not dispose of your old products with your normal household waste. Correct disposal of your old product helps to prevent potential negative consequences for the environment and human health.



Your product contains batteries covered by the European Directive 2006/66/EC, which cannot be disposed with normal household waste. Please inform yourself about the local rules on separate collection of batteries because correct disposal helps to prevent negative consequences for the environmental and human health.

Compliance



This product complies with the radio interference requirements of the European Community.

This apparatus includes this label:



Class II equipment symbol:



This symbol indicates that this product has a double insulation system.



Note

- The type plate is located on the back of the apparatus.

Copyright



**Be responsible
Respect copyrights**

This item incorporates copy protection technology that is protected by U.S. patents and other intellectual property rights of Rovi Corporation. Reverse engineering and disassembly are prohibited.

2013 © Koninklijke Philips Electronics N.V. Specifications are subject to change without notice. Trademarks are the property of Koninklijke Philips Electronics N.V or their respective owners. Philips reserves the right to change products at any time without being obliged to adjust earlier supplies accordingly.

Warranty

- Never attempt to repair the product, this could lead to the risk of injury, damage to the product and will void your warranty.
- Use the product and accessories only as intended by the manufacturer. The caution sign printed on the back of the product indicates risk of electric shock.
- Never remove the cover of the product. Always contact Philips Customer Support for service or repairs.
- Any operation expressly prohibited in this manual, or any adjustments and assembly procedures not recommended or authorized in this manual shall void the warranty.

2 Your Micro Hi-Fi System

Congratulations on your purchase, and welcome to Philips! To fully benefit from the support that Philips offers, register your product at www.Philips.com/welcome.

Introduction

With this unit, you can:

- enjoy audio from discs and other external devices
- listen to radio stations

You can enrich sound output with the following sound effect:

- Dynamic Bass Boost (DBB)

The unit supports the following media format:

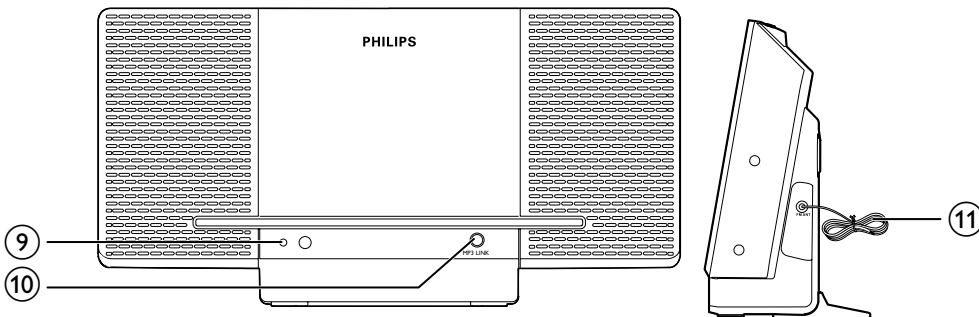
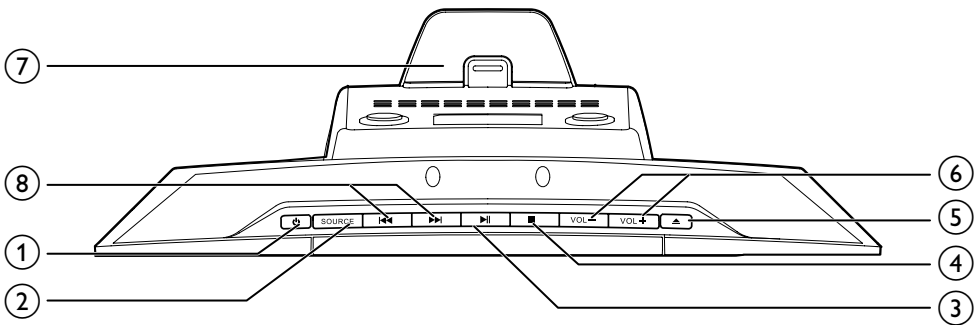


What's in the box

Check and identify the contents of your package:

- Main unit
- Remote control (with battery)
- Base bracket
- Printed materials

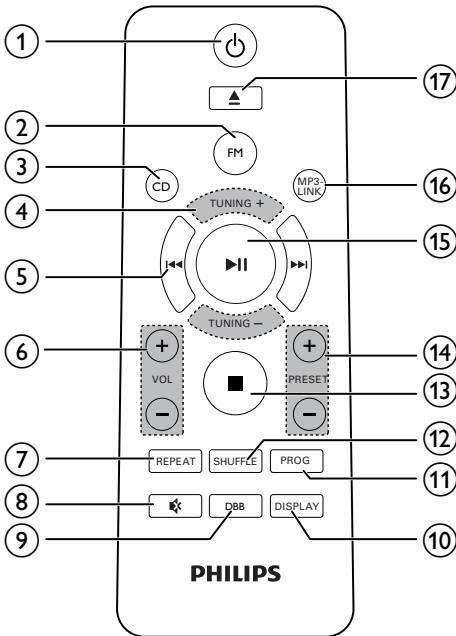
Overview of the main unit



- ①
 - Turn on/off the unit.
 - Switch to standby mode.
- ② **SOURCE**
 - Select a source: CD, Tuner, or AUX.
- ③
 - Start or pause play.
- ④
 - Stop play or erase a program.
- ⑤
 - Open/close the disc compartment.
- ⑥ **VOL +/-**
 - Adjust volume.
- ⑦ **Base bracket**

- ⑧
 - Skip to the previous/next track.
 - Search within a track or disc.
 - Select a preset radio station.
 - Search for a radio station.
- ⑨ **Standby LED**
 - On: Standby mode.
 - Off: Working mode.
- ⑩ **MP3-LINK**
 - Jack for an external audio device.
- ⑪ **Pigtail(FM ANT)**
 - Improve FM reception.

Overview of the remote control



- ① **Power**
 - Turn on/off the unit.
 - Switch to standby mode.
- ② **FM**
 - Select FM radio source.
- ③ **CD**
 - Select disc source.
- ④ **TUNING +/-**
 - Tune to a radio station.
- ⑤ **⏮ / ⏭**
 - Skip to the previous/next track.
 - Search within a track or disc.
 - Select a preset radio station.
 - Tune to a radio station.
- ⑥ **VOL +/-**
 - Adjust volume.

- ⑦ **REPEAT**
 - Play a track or all tracks repeatedly.
- ⑧ **🔇**
 - Mute or restore volume.
- ⑨ **DBB**
 - Turns on or off dynamic bass boost.
- ⑩ **DISPLAY**
 - Show current status.
- ⑪ **PROG**
 - Program tracks.
 - Program radio stations.
- ⑫ **SHUFFLE**
 - Play tracks randomly.
- ⑬ **■**
 - Stop play or erase a program.
- ⑭ **PRESET +/-**
 - Select a preset radio station.
- ⑮ **▶ ||**
 - Start or pause play.
- ⑯ **MP3-LINK**
 - Select external audio device source.
- ⑰ **▲**
 - Open/close the disc compartment.

3 Get started

Always follow the instructions in this chapter in sequence.

If you contact Philips, you will be asked for the model and serial number of this apparatus. The model number and serial number are on the rear of the apparatus. Write the numbers here:

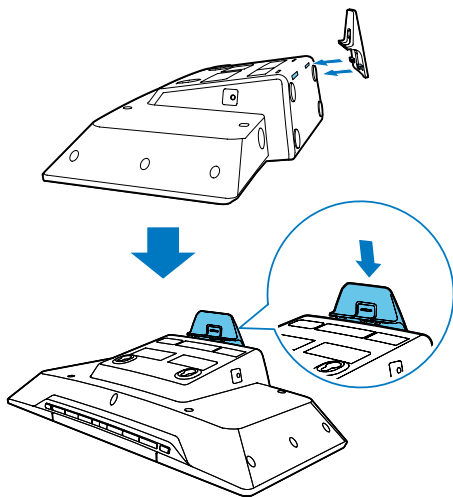
Model No. _____

Serial No. _____

Place on a flat surface

Before you place the micro Hi-Fi system on a flat surface, attach the supplied base bracket.

- 1 Place the micro Hi-Fi system face-down on a flat surface.
- 2 Insert the base bracket into the two slots on the bottom of the unit.
- 3 Push the bracket downward to fit into the slots until it locks into place.



Tip

- You can also mount the unit on a wall.

Prepare the remote control

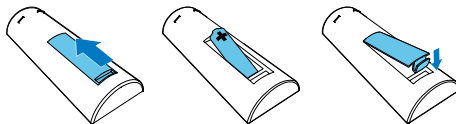


Caution

- Risk of explosion! Keep batteries away from heat, sunshine or fire. Never discard batteries in fire.
- Risk of decreased battery life! Never mix different brands or types of batteries.
- Danger of explosion if battery is incorrectly replaced. Replace only with the same or equivalent type.

To replace the remote control battery:

- 1 Open the battery compartment.
- 2 Insert one AAA battery with correct polarity (+/-) as indicated.
- 3 Close the battery compartment.



Connect power adapter

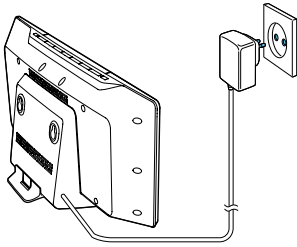


Caution

- Risk of product damage! Make sure that the power supply voltage corresponds to the voltage printed on the back or the underside of the Micro Hi-Fi system.
- Risk of electric shock! When you unplug the power adapter, always pull the plug from the socket. Never pull the cord.

Connect the power adapter to the wall socket.

- ↳ The red standby indicator turns on.
- ↳ The unit is ready to be set up for use.



Switch on

Press **⏻**.

↳ The unit switches to the last selected source.

To switch on and select a source directly,

- Press **CD**, **FM** or **MP3-LINK** on the remote control.

Switch to standby mode

Press **⏻** to switch to standby mode.

↳ The red standby indicator turns on.

↳ The backlight on the display panel turns off.

4 Play disc



Caution

- Do not place any objects other than discs into the disc compartment.
- Do not touch the disc optical lens inside the disc compartment.

- 1 Press **CD** on the remote control to select the disc source.
- 2 Press **⏮** on the unit to open the disc compartment.
- 3 Insert a disc with the printed side facing outward.
- 4 Press **⏮** to close the disc compartment.
 - To pause/resume play, press **⏮**.
 - To stop play, press **⏹**.

Play options

Skip to a track

During play, press **⏮** / **⏭** to select another track.

Search within a track

- 1 During play, press and hold **⏮** / **⏭**.
- 2 Release to resume normal play.

Display play information

During play, press **DISPLAY** repeatedly to select different play information.

Program tracks

You can program a maximum of 20 tracks.

- 1 In CD mode, in the stop position, press **PROG** to activate the program mode.
↳ [P01] (program) is displayed.
- 2 Press **◀◀** / **▶▶** to select a track number, and then press **PROG** to confirm.
- 3 Repeat step 2 to select and store more tracks to program.
- 4 Press **▶▶** to play the programmed tracks.

To erase the program,

- Press **■** twice.
- Switch to another mode.
- Switch off the micro Hi-Fi System.

Repeat play

- 1 During play, press **REPEAT** repeatedly to select:
 - [r1]: play the current track repeatedly.
 - [rA]: play all tracks repeatedly.
- 2 To return to normal play, press **REPEAT** repeatedly until repeat mode is no longer displayed.

Shuffle play

You can play all tracks in random order:

- 1 During play, press **SHUFFLE**.
 - [SH]: play tracks randomly.
- 2 To return to normal play, press **SHUFFLE** again.

5 Adjust volume level and sound effect

Adjust volume level

During play, press **VOL +/-** to increase/decrease the volume level.

Enhance bass

During play, press **DBB** repeatedly to turn on or off dynamic bass enhancement.

↳ The current DBB setting is displayed.

- [dbb-0]: The Dynamic Bass Boost (DBB) function is off.
- [dbb-1]: The DBB function is on.

Mute sound

During play, press **✱** to mute or restore the volume.

6 Listen to the radio

Tune to a radio station

- 1 Press **FM** on the remote control to select FM source.
- 2 Press and hold **◀◀** / **▶▶** for more than 2 seconds.
 - ↳ The radio tunes to a station with strong reception automatically.
- 3 Repeat step 2 to tune to more stations.
 - To tune to a weak station, press **TUNING +/-** repeatedly until you find optimal reception.
 - To improve FM reception, extend and position the pigtail fully.

Program radio stations automatically



Note

- You can program a maximum of 10 preset FM radio stations.

In tuner mode, press and hold **PROG** for more than 2 seconds to activate automatic program mode.

- ↳ **[AUTO]** (auto) is displayed.
- ↳ All available stations are programmed in the order of waveband reception strength.
- ↳ The first programmed radio station is broadcast automatically.

Program radio stations manually



Note

- You can program a maximum of 10 preset radio stations.

- 1 Tune to a radio station.
- 2 Press **PROG** to activate program mode.
 - ↳ **[P01]** is displayed.
- 3 Press **PRESET +/-** to allocate a number to this radio station, and then press **PROG** to confirm.
 - ↳ The preset number and the frequency of the preset station are displayed.
- 4 Repeat the above steps to program other stations.



Tip

- To overwrite a programmed station, store another station in its place.

Select a preset radio station

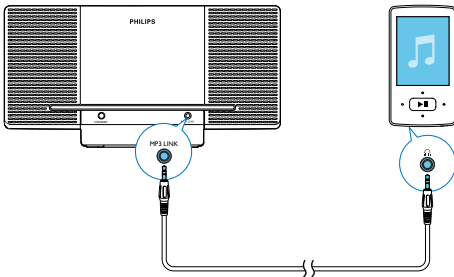
In tuner mode, press **PRESET +/-** to select a preset number.

7 Other features

Listen to an external device

You can listen to an external device through this micro Hi-Fi system.

- 1 Press **MP3-LINK** on the remote control to select **AUX** source.
- 2 Connect an MP3 link cable to:
 - **MP3-LINK** jack (3.5 mm) on the unit
 - the headphone jack on an external device
- 3 Start to play the device (see the device user manual).



8 Product information



Note

- Product information is subject to change without prior notice.

Specifications

Amplifier

Rated Output Power	2 x 2 W RMS
Frequency Response	60 Hz - 20 kHz
Signal to Noise Ratio	>57 dBA
Aux Input	0.6V RMS 22 kohm

Disc

Laser Type	Semiconductor
Disc Diameter	12 cm/8 cm
Support Disc	CD-DA, CD-R, CD-RW
Audio DAC	24 Bits / 44.1 kHz
Total Harmonic Distortion	<1% (1 kHz)
Frequency Response	60 Hz -20 kHz (44.1 kHz)
S/N Ratio	>57 dBA

Tuner

Tuning Range	FM: 87.5 - 108 MHz
Tuning grid	50 KHz
Sensitivity	
- Mono, 26dB S/N Ratio	<22 dBf
- Stereo, 46dB S/N Ratio	<48 dBf
Search Selectivity	>28 dBf
Total Harmonic Distortion	<3%
Signal to Noise Ratio	>55 dB

Speakers

Speaker Impedance 4 ohm

Speaker Driver 2.5" full range

Sensitivity >82 dB/m/W \pm 3 dB/m/W

General information

Adapter 9 V, 1.5 A

Operation Power

Consumption 10 W

Standby Power

Consumption < 0.5 W

Dimensions

- Main Unit (W x H x D) 400 x 202 x 80 mm

Weight

- With Packing 3.82 kg

- Main Unit 1.4 kg

9 Troubleshooting



Caution

- Never remove the casing of this apparatus.

To keep the warranty valid, never try to repair the system yourself.

If you encounter problems when using this apparatus, check the following points before requesting service. If the problem remains unsolved, go to the Philips web site (www.philips.com/support). When you contact Philips, ensure that the apparatus is nearby and the model number and serial number are available.

No power

- Ensure that the AC power cord of the unit is connected properly.
- Ensure that there is power at the AC outlet.
- As a power-saving feature, the system switches off automatically 15 minutes after track play reaches the end and no control is operated.

No response from the unit

- Disconnect and reconnect the AC power plug, and then turn on the system again.

No sound or poor sound

- Adjust the volume.

Remote control does not work

- Before you press any function button, first select the correct source with the remote control instead of the main unit.
- Reduce the distance between the remote control and the unit.
- Insert the battery with its polarities (+/- signs) aligned as indicated.
- Replace the battery.
- Aim the remote control directly at the sensor on the front of the unit.

No disc detected

- Insert a disc.
- Check if the disc is inserted upside down.
- Wait until the moisture condensation at the lens has cleared.
- Replace or clean the disc.
- Use a finalized CD or correct format disc.

Poor radio reception

- Increase the distance between the unit and your TV or VCR.
- Fully extend the antenna.



Specifications are subject to change without notice
© 2013 Koninklijke Philips Electronics N.V.
All rights reserved.

TCM350_12_UM_V1.0

