

# Quick Start Guide



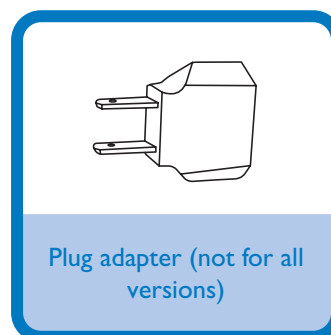
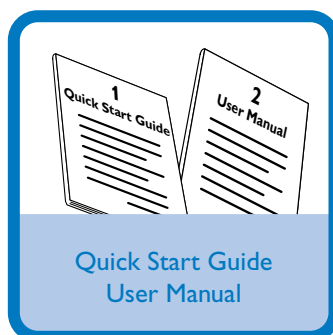
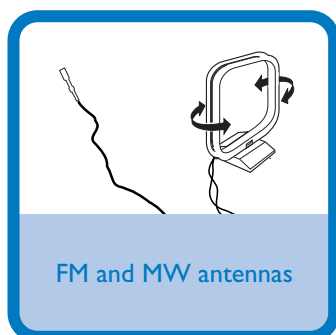
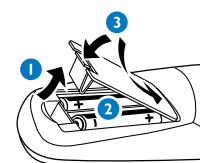
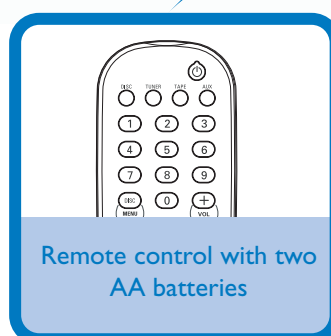
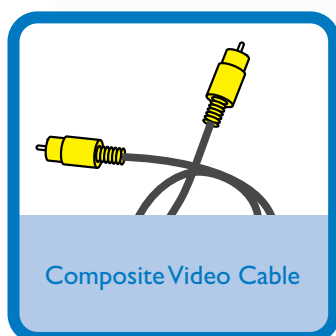
Step A *Connect*

Step B *Setup*

Step C *Enjoy*

## What's in the Box?

You should find these items upon opening the box.



## Step A *Connect*

### Tip

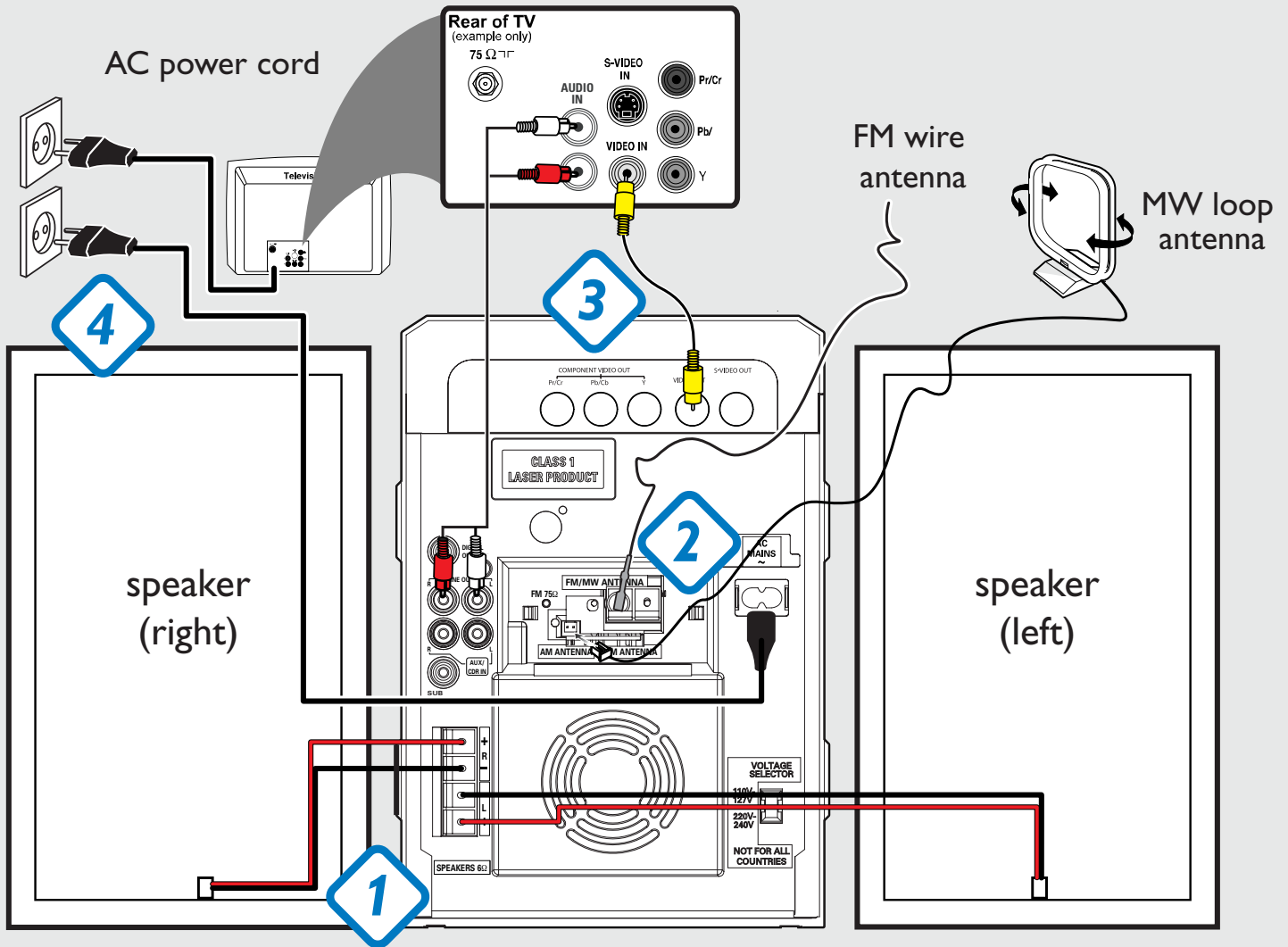
See the User Manual for other TV connection options.

1 Connect the speaker cables.

2 Connect the MW and FM antennas.

3 Connect the composite video cable and audio cables to a TV.

4 Connect the power cords of the system and TV.

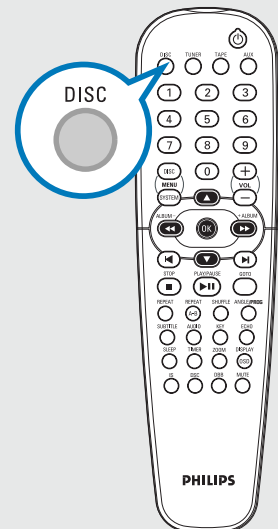


## Step B *Setup*

### Setting up the TV

1 Press **SOURCE** (**DISC** on the remote) to select disc source.

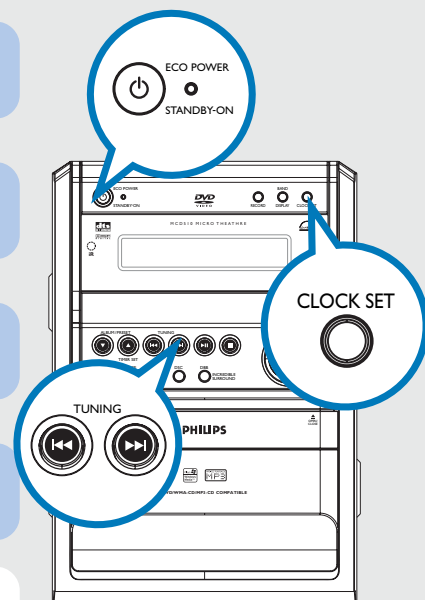
2 Turn on the TV and set it to the correct Video In channel.




# Step B Setup

## Setting the clock

- 1 In normal standby mode, press and hold **CLOCK SET** on the system.
- 2 When the hour digits flash, press **TUNING** ◀▶ on the system to set the hours.
- 3 Press **CLOCK SET** again and the minute digits flash. Then press **TUNING** ◀▶ to set the minutes.
- 4 Press **CLOCK SET** again to confirm the time setting.




**Tip**  
 If the system is in Eco power standby mode, press and hold **ECO POWER/STANDBY-ON**  for more than 3 seconds to switch to normal standby.

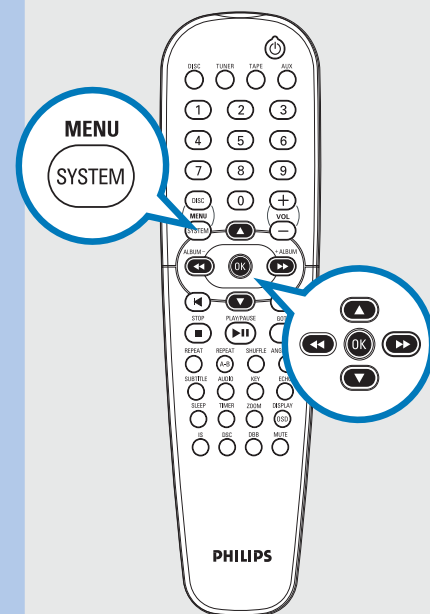
## Setting DVD menu options

Language	Video	Audio	Rating
OSD Menu	English		
Subtitle	English		
Audio	English		
Menu	English		

Language	Video	Audio	Rating
TV Shape	4:3 LB		4:3 PS
TV System	Auto		4:3 LB
Video output	S-VIDEO		16:9

Language	Video	Audio	Rating
Digital Out	PCM		
PCM 48KHz	Off		Off
Priority	CD		On
Night Mode	Off		

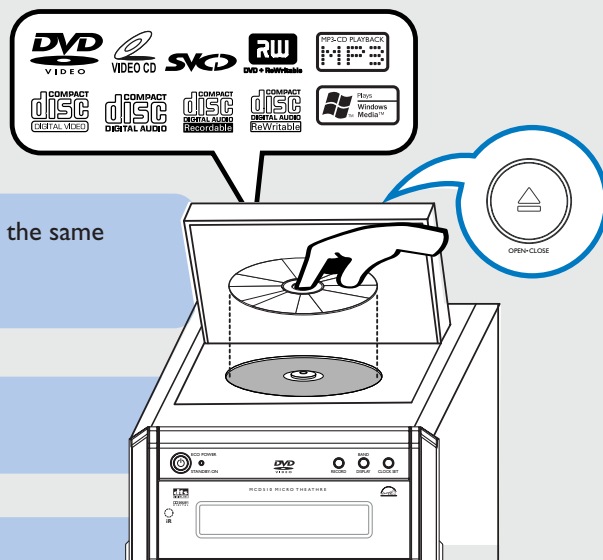
Language	Video	Audio	Rating
Password		---	1.kid Safe
Rating	8. Adult		2.G
Load Factory	Reset		3.PG
			4.PG-13
			5.PG-R
			6.R
			7.NC-17
			8.Adult



**Tip**  
 See chapters "Preparations" and "DVD Menu Options" in the User Manual for detailed descriptions.

## Playing a disc

- 1 Press **OPEN •CLOSE ▲** to open the disc tray and load in a disc, then press the same button again to close the disc tray.  
→ Make sure the label side of the disc is facing up.
- 2 Playback will start automatically. If not press **▶ II (PLAY/PAUSE ▶ II)** on the remote).
- 3 To stop playback, press **■ (STOP ■)** on the remote).



## Programming and tuning to radio stations

- 1 Press **SOURCE (TUNER)** on the remote) to select tuner source.
- 2 Press **PROGRAM (ANGLE/PROG)** on the remote) for more than two seconds to program all available stations in order of waveband.
- 3 Press **ALBUM/PRESET ▲/▼** until the desired preset station is displayed.

### Tip

Detailed playback features and additional functions are described in the accompany owner's manual.

