

Register your product and get support at
www.philips.com/welcome

DA9011



EN User manual

PHILIPS

1 Important

Safety

- Never lubricate any part of this unit
 - Never place this unit on other electrical equipment.
 - Never expose this device to direct sunlight, naked flames, or heat.
 - Only use attachments/accessories specified by the manufacturer.
 - Refer all servicing to qualified service personnel. Servicing is required when the digital radio has been damaged in any way, such as power-supply cord or plug is damaged, liquid has been spilled or objects have fallen into the digital radio, the digital radio has been exposed to rain or moisture, does not operate normally, or has been dropped.
 - The unit shall not be exposed to dripping or splashing.
 - Do not place any sources of danger on the unit (e.g. liquid filled objects, lighted candles).
 - Where the mains plug or an appliance coupler is used as the disconnect device, the disconnect device shall remain readily operable.
-

Hearing safety



Listen at a moderate volume.

- Using earphones at a high volume can impair your hearing. This product can produce sounds in decibel ranges that may cause hearing loss for a normal person, even for exposure less than a minute. The higher decibel ranges are offered for those that may have already experienced some hearing loss.
- Sound can be deceiving. Over time your hearing 'comfort level' adapts to higher volumes of sound. So after prolonged listening, what sounds 'normal' can actually be loud and harmful to your hearing. To guard against this, set your volume to a safe level before your hearing adapts and leave it there.

To establish a safe volume level:

- Set your volume control at a low setting.
- Slowly increase the sound until you can hear it comfortably and clearly, without distortion.

Listen for reasonable periods of time:

- Prolonged exposure to sound, even at normally 'safe' levels, can also cause hearing loss.
- Be sure to use your equipment reasonably and take appropriate breaks.

Be sure to observe the following guidelines when using your earphones.

- Listen at reasonable volumes for reasonable periods of time.
- Be careful not to adjust the volume as your hearing adapts.
- Do not turn up the volume so high that you can't hear what's around you.
- You should use caution or temporarily discontinue use in potentially hazardous situations. Do not use earphones while operating a motorized vehicle, cycling, skateboarding, etc.; it may create a traffic hazard and is illegal in many areas.

Notice



This product complies with the radio interference requirements of the European Community.

Any changes or modifications made to this device that are not expressly approved by Philips Consumer Lifestyle may void the user's authority to operate the equipment.



Your product is designed and manufactured with high quality materials and components, which can be recycled and reused.



When this crossed-out wheeled bin symbol is attached to a product it means that the product is covered by the European Directive 2002/96/EC. Please inform yourself about the local separate collection system for electrical and electronic products.

Please act according to your local rules and do not dispose of your old products with your normal household waste.

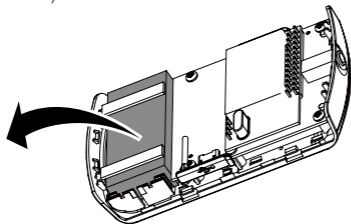
Correct disposal of your old product helps to prevent potential negative consequences for the environment and human health.



Your product contains batteries covered by the European Directive 2006/66/EC, which cannot be disposed with normal household waste.

Please inform yourself about the local rules on separate collection of batteries because correct disposal helps to prevent negative consequences for the environmental and human health.

Always bring your product to a professional to remove the built-in battery.



Environmental information

All unnecessary packaging has been omitted. We have tried to make the packaging easy to separate into three materials: cardboard (box), polystyrene foam (buffer) and polyethylene (bags, protective foam sheet.)

Your system consists of materials which can be recycled and reused if disassembled by a specialized company. Please observe the local regulations regarding the disposal of packaging materials, exhausted batteries and old equipment.



Note

- The type plate is located on the back of the unit.

2 Your FM/DAB radio

Congratulations on your purchase, and welcome to Philips! To fully benefit from the support that Philips offers, register your product at www.philips.com/welcome.

Introduction

With this unit, you can enjoy both FM and Digital Audio Broadcasting (DAB) radio.

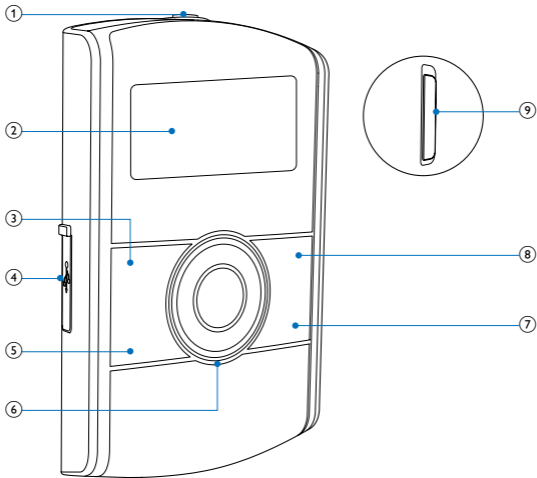
Digital Audio Broadcasting (DAB), is a way of broadcasting radio digitally through a network of transmitters. It provides you with more choice, better sound quality, and more information.


What's in the box

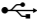
Check and identify the contents of your package:

- Main unit
- Power adapter
- USB cable
- Earphones
- User manual

Overview of the main unit



- ① 
 - Earphones socket.
- ② **Display panel**
 - Show current information.
- ③ **INFO**
 - Display DAB/RDS information

④  (USB socket)

- Connect power through a USB cable.
- Connect PC for software update.

⑤ MENU

- Access DAB/FM menu.

⑥ Navigation keys



- Adjust volume.



- Adjust settings.
- Tune to a radio station.
- Search for next radio station automatically.

OK

- Confirm a selection.
- Search for next radio station automatically.

⑦ DAB/FM

- Select DAB/FM source.

⑧ PRESET

- Store radio stations manually.
- Select a preset radio station.

⑨ Power selector

- Turn on/off the power.

3 Get started



Caution

- Use of controls, or adjustments or performance of procedures other than herein may result in hazardous radiation exposure or other unsafe operation.

Always follow the instructions in this chapter in sequence.

If you contact Philips, you will be asked for the model and serial number of this device. The model number and serial number are on the back of the device. Write the numbers here:

Model No. _____

Serial No. _____


Connect power



Caution

- Risk of product damage! Ensure that the power supply voltage corresponds to the voltage printed on the back or the underside of the unit.
- Risk of electric shock! When you unplug the AC power cord, always pull the plug from the socket. Never pull the cord.
- Before connecting the AC adapter, ensure that you have completed all other connections.
- Danger of explosion if battery is incorrectly replaced. Replace only with the same or equivalent type.
- The battery contains chemical substances, so it should be disposed of properly.

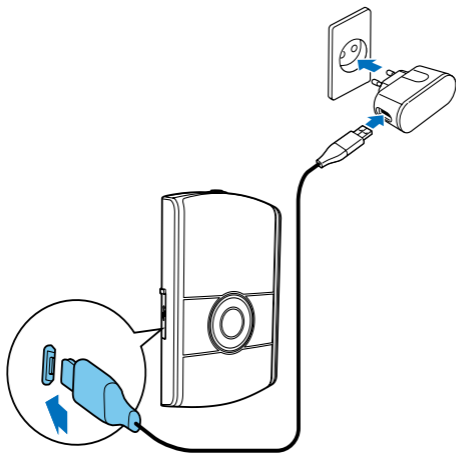
This digital radio can be powered on by AC mains or build-in battery.

- 1 Pull the cover out of the  (USB) socket on the left of the unit.
- 2 Insert one end of the USB cable into the USB socket.
- 3 Connect the other end of the USB cable to the AC adapter.
- 4 Connect the AC adapter to the wall outlet.
↳ This digital radio begins to charge automatically.



Note

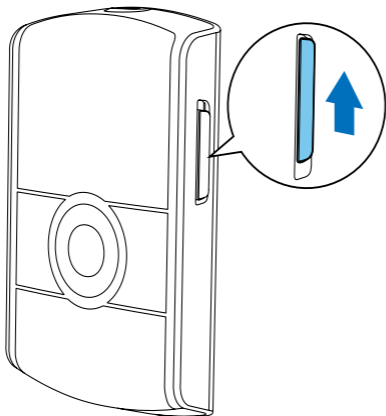
- When use build-in battery, please make sure the power is sufficient. If not, follow above steps to charge your digital radio.



Turn on

Push the selector upward to turn on the unit.

- ↳ **[Welcome to Digital Radio]** (welcome to digital radio) is displayed.
- ↳ The unit switches to the last selected source.




To turn off the unit, push the selector downward.

Adjust volume

Press ▲ / ▼ repeatedly to increase/decrease the volume.

Connect the earphones

Before tune to a radio station, plug the supplied earphoned into the  socket on the top of the unit. Otherwise, you can't listen to the radio. For optimal reception, fully extend your earphones cable and adjust the position of your digital radio.



Note

- To prevent interference, position your digital radio as far as possible from TV, VCR, or other radiation source.

4 Listen to DAB radio

Tune to DAB radio stations

When you enter the DAB mode for the first time, or the station list is empty, the digital radio automatically scans DAB radio stations, and station list is retained in memory. Next time when you turn on the unit, the station scan does not take place.

- 1 Press **DAB/FM** repeatedly to select DAB mode.
 - ↳ A bar graph indicates the progress of the search and the number of stations found increase as the scan progresses.



- 2 When scan is completed,
- ↳ The stations are listed and first available station broadcasts automatically.
 - ↳ If no DAB station is available, **[No DAB Station]** (no DAB station) is displayed.
 - Change the location.
 - Press **OK** to scan again.

To change DAB stations:

In DAB mode, press ◀/▶ repeatedly to tune to a desired station, and then press **OK** to confirm. If not, the radio exits the station list automatically.

Scan DAB radio stations automatically



Note

- New stations and services will be added in the DAB broadcast. To make new DAB stations and services available, perform full scan regularly.

- 1 In DAB mode, press **MENU** to access the DAB menu.
- 2 Press ◀/▶ repeatedly to display **[Full scan]** (full scan).
- 3 Press **OK** to confirm.
 - ↳ The unit scans all DAB radio stations and broadcasts the first available station.

Store DAB radio stations manually



Note

- You can store up to 10 DAB radio stations.

- 1 Tune to a DAB radio station.
- 2 Press and hold **PRESET** for more than two seconds to activate the storing mode.
 - ↳ **[Preset Store]** (preset store) is displayed.
- 3 Press ◀/▶ repeatedly to select a preset number.
- 4 Press **OK** to confirm.
- 5 Repeat steps 1 to 4 to store more DAB stations.



Note

- To overwrite a preset station, store another station in its place.

Select a preset DAB radio station

- 1 In DAB mode, press **PRESET**.
- 2 Press ◀/▶ repeatedly to select a preset DAB radio station.
- 3 Press **OK** to confirm.



Note

- When you go through the preset station list, if no button is pressed within 15 seconds, the radio tunes to last selected station.

Display DAB information

- 1 Tune to a DAB radio station.
- 2 Press **INFO** repeatedly to scroll through the following information (if available):
 - ↳ Dynamic Label Segment (DLS)
 - ↳ Signal strength
 - ↳ Program Type (PTY)
 - ↳ Ensemble name
 - ↳ Channel and frequency
 - ↳ Signal error rate
 - ↳ Bit rate and audio status
 - ↳ Time

Use DAB menu

- 1 In DAB mode, press **MENU** to access the DAB menu.
- 2 Press ◀/▶ repeatedly to display the menu options:
 - **[Station list]** (station list): display all DAB radio stations that have been found.
 - **[Full scan]** (full scan): scan all available DAB radio stations.
 - **[Manual tune]** (manual tune): tune to a specific channel/frequency manually and add it to the station list.
 - **[DRC]** (DRC)
 - **[Station order]** (station order): change station order.
 - **[Prune]** (prune): remove unavailable stations from the station list.
 - **[System]** (system): adjust system settings.
- 3 To select an option, press **OK**.
- 4 Repeat steps 2-3 if sub-option is available under one option.

[DRC] (DRC)

Dynamic range compression (DRC) adds or removes a degree of compensation for the differences in the dynamic range between radio stations.

- **[DRC high]** (DRC high): set DRC in high level.
- **[DRC low]** (DRC low): set DRC in low level.
- **[DRC off]** (DRC off): turn off DRC.



Note

- DRC only works if it is enabled by the broadcaster for a specific station.

[Station order] (station order)

- **[Alphanumeric]** (alphanumeric): list stations in alphanumeric order.

- **[Ensemble]** (ensemble): list groups of stations that are broadcast together on the same ensemble.

[System] (system)

- **[Backlight]** (backlight): select timeout mode for the backlight.
- **[Language]** (language): select a language.
- **[Factory Reset]** (factory reset): reset all settings to factory default.
- **[Software Upgrade]** (software upgrade): upgrade software if available.
- **[SW version]** (software version): know the software version of this digital radio.



Note

- If no button is pressed within 15 seconds, the menu exits.

5 Listen to FM radio

Tune to FM radio stations

- 1 Press **DAB/FM** repeatedly to select FM mode.
- 2 Press **◀/▶** repeatedly to tune to a radio station.

Scan FM radio stations automatically

In FM mode, press **OK** or press and hold **◀/▶** for more than two seconds.

- ↳ The unit scans the next available station and broadcasts it automatically.

Store FM radio stations manually



Note

- You can store up to 10 FM radio stations.

- 1 Tune to an FM radio station.
- 2 Press and hold **PRESET** for more than two seconds to activate storing mode.
- 3 Press ◀/▶ repeatedly to select a preset number.
- 4 Press **OK** to confirm.
- 5 Repeat steps 1-4 to store more FM stations.



Tip

- To overwrite a preset station, store another station in its place.

Select a preset FM radio station

- 1 In FM mode, press **PRESET**.
- 2 Press ◀/▶ repeatedly to select a preset FM radio station.
- 3 Press **OK** to confirm.



Note

- When you go through the preset station list, if no button is pressed within 15 seconds, the radio tunes to last selected station.

Display RDS information

Radio Data System (RDS) is a service that allows FM stations to show additional information.

If you listen to an FM station with RDS signal, the station name is displayed.

- 1 Tune to an RDS station.
- 2 Press **INFO** repeatedly to scroll through the following information (if available):
 - ↳ Radio text
 - ↳ Program type such as **[NEWS]** (news), **[SPORT]** (sport), **[POP M]** (pop music)...
 - ↳ Station name
 - ↳ Mono/stereo

Use FM menu

- 1 In FM mode, press **MENU** to access FM menu.
- 2 Press **◀/▶** repeatedly to scroll the menu options:
 - **[Scan setting]** (scan setting)
 - **[Audio setting]** (audio setting)
 - **[System]** (system)
- 3 To select an option, press **OK**.
- 4 Repeat steps 2-3 if sub-option is available under one option.

[Scan setting] (scan setting)

- **[All stations]** (all stations): scan all FM radio stations.
- **[Strong stations only]** (strong stations only): scan stations with strong signals only.

[Audio setting] (audio setting)

- **[Stereo allowed]** (stereo allowed): select stereo broadcast.

- **[Forced mono]** (forced mono): select mono broadcast.

[System] (system)

- **[Backlight]** (backlight): set time duration of the backlight.
- **[Language]** (language): select a language.
- **[Factory Reset]** (factory reset): reset all settings to factory default.
- **[Software Upgrade]** (software upgrade): upgrade software if available.
- **[SW version]** (software version): display the current software version.



Note

- If no button is pressed within 15 seconds, the menu exits.

6 Update software (if available)

Software upgrade for your radio may be available in future. If you register your product at Philips website (www.philips.com/welcome) with a valid email address, you may receive software update notification. Or you can visit Philips website constantly to check if the updating information is provided.

To upgrade software of your radio, follow these steps strictly:

- 1** Read software update instructions on Philips website carefully.
- 2** Download the latest software to your PC, and then connect your radio to the PC via USB socket.
- 3** In FM/DAB mode, enter the system menu.
- 4** Press ◀/▶ repeatedly until **[Software Upgrade]** (software upgrade) is displayed.

- 5 Press **OK** to confirm.
- 6 Follow the instructions on the screen to complete upgrade.



Note

- If you select **[Software upgrade]** (software upgrade) > **[Yes]** (yes) without downloading the latest software or connecting to PC via USB socket, you need power off and turn on the radio again.
- If upgrade is interrupted by accident, you must power off the unit and reinstall the software, otherwise your radio cannot work normally.

7 Synchronize the time

The time can be synchronized with external clocks broadcast over DAB and RDS radio stations.

8 Product information



Note

- Product information is subject to change without prior notice.

Tuner (FM/DAB)

Tuning Range	FM: 87.5 - 108 MHz DAB: 174.928 - 239.200 MHz (Band III)
Tuning grid (FM)	50 KHz
Sensitivity	
- Mono, 26 dB S/N Ratio	<22 dBu
- Stereo, 46 dB S/N Ratio	<45 dBu
Search Selectivity	
-All stations	30 dBf
-Strong station	35 dBf
Total Harmonic Distortion	< 2%
Signal to Noise Ratio	>55 dB

General information

AC adapter	
-Brand name	PHILIPS
-Model	S005SV0500050
-Input	100-240 V ~; 50/60 Hz;150 mA
-Output	5 V $\overline{=}$ 0.5 A
Operation Power Consumption	2.5 W
Headphone output power	3 mW x 2 (16 ohm)
Dimensions	
- Main Unit (H x W x D)	172 x 92 x 72 mm
Weight	
- Main Unit	0.067 kg

9 Troubleshooting



Warning

- Never remove the casing of this device.

To keep the warranty valid, never try to repair the system yourself. If you encounter problems when using this device, check the following points before requesting service. If the problem remains unsolved, go to the Philips web site (www.philips.com/welcome). When you contact Philips, ensure that the device is nearby and the model number and serial number are available.

No power

- When use build-in battery only, make sure that the power is sufficient.
- When use AC power plug, make sure that the plug is connected properly, and there is power at the AC outlet.

No sound

- Fully insert your earphones.
- Adjust the volume.

No response from the unit

- Turn off the unit and then turn on it again.

Poor radio reception

- Increase the distance between your digital radio and your TV or VCR.
- Change the location.

10 About DAB

About Digital Audio Broadcasting (DAB)

DAB digital radio is a new way of broadcasting radio via a network of terrestrial transmitters. It provides listeners with more choice and information delivered in crystal clear, crackle-free sound quality.

- The technology allows the receiver to lock on to the strongest signal it can find.
- With DAB digital stations there are no frequencies to remember, and sets are tuned by station name, so there's no returning on the move.

What is a multiplex?

Digital radio operation is made up of a single block of frequencies called a multiplex. Each multiplex works within a frequency spectrum, such as Band III for DAB broadcasts.

DAB BROADCASTERS AND DLS

Each DAB broadcaster (or multiplex operator) also provides text and audio data services. Some programs are supported by Dynamic Label Segments (DLS). This is data which you can read as scrolling text on your DAB radio display. Some stations transmit the latest news, travel, and weather; what's on now and next, website addresses and phone numbers.

For more information on digital radio coverage and services, please visit: www.drdb.org.



© 2011 Koninklijke Philips Electronics N.V.

All rights reserved.

DA9011_02_UM_V1.1

