

Register your product and get support at  
[www.philips.com/welcome](http://www.philips.com/welcome)



HTS9520

**PHILIPS**



# Contents

<b>1</b>	<b>Important</b>	<b>2</b>
	Safety	2
	Product care	2
	Disposal of your old product and batteries	3
	3D health warning	3
<b>2</b>	<b>Your home theater</b>	<b>4</b>
	Main unit	4
	Remote control	4
<b>3</b>	<b>Connect your home theater</b>	<b>7</b>
	Connectors	7
	Connect to the TV	8
	Connect audio from TV or other devices	9
	Connect to a computer network and the Internet	10
	Connect a Wi-Fi USB adapter	11
	Connect a wireless module	11
<b>4</b>	<b>Use your home theater</b>	<b>11</b>
	Before you start	11
	Access the home menu	11
	Choose your sound	12
	Play a disc	13
	Use Bonus View on Blu-ray	13
	Access BD-Live on Blu-ray	14
	Play 3D video	14
	Play from a USB storage device	14
	More play features for disc or USB	15
	Play from PC (DLNA)	16
	Browse NetTV	17
	Play from radio	17
	Play audio from TV or other devices	18
	Play from an MP3 player	18
	Play from an iPod or iPhone	18
	Use Philips EasyLink	18

<b>5</b>	<b>Change settings</b>	<b>19</b>
	Access the setup menu	19
	Change video settings	19
	Change audio settings	20
	Set up network	20
	Set up EasyLink	20
	Change preference settings	21
	Change advanced settings	21
<b>6</b>	<b>Update software</b>	<b>22</b>
	Check software version	22
	Update software from the network	22
	Update software from a USB	23
	Update electronic user manual	23
<b>7</b>	<b>Product specifications</b>	<b>24</b>
<b>8</b>	<b>Troubleshooting</b>	<b>25</b>
	Main unit	25
	Picture	25
	Sound	26
	Play	26
	Network	27
<b>9</b>	<b>Index</b>	<b>27</b>

# 1 Important

Read and understand all instructions before you use your home theater. If damage is caused by failure to follow instructions, the warranty does not apply.

---

## Safety

### Risk of electric shock or fire!

- Never expose the product and accessories to rain or water. Never place liquid containers, such as vases, near the product. If liquids are spilt on or into the product, disconnect it from the power outlet immediately. Contact Philips Consumer Care to have the product checked before use.
- Never place the product and accessories near naked flames or other heat sources, including direct sunlight.
- Never insert objects into the ventilation slots or other openings on the product.
- Where the mains plug or an appliance coupler is used as the disconnect device, the disconnect device shall remain readily operable.
- Disconnect the product from the power outlet before lightning storms.
- When you disconnect the power cord, always pull the plug, never the cable.

### Risk of short circuit or fire!

- Before you connect the product to the power outlet, ensure that the power voltage matches the value printed on the back or bottom of the product. Never connect the product to the power outlet if the voltage is different.

### Risk of injury or damage to the home theater!

- For wall-mountable products, use only the supplied wall mount bracket. Secure the wall mount to a wall that can support the combined weight of the product and the wall mount. Koninklijke Philips Electronics N.V. bears no responsibility for improper wall mounting that results in accident, injury or damage.
- For speakers with stands, use only the supplied stands. Secure the stands to the

speakers tightly. Place the assembled stands on flat, level surfaces that can support the combined weight of the speaker and stand.

- Never place the product or any objects on power cords or on other electrical equipment.
- If the product is transported in temperatures below 5°C, unpack the product and wait until its temperature matches room temperature before connecting it to the power outlet.
- Visible and invisible laser radiation when open. Avoid exposure to beam.
- Do not touch the disc optical lens inside the disc compartment.

### Risk of overheating!

- Never install this product in a confined space. Always leave a space of at least four inches around the product for ventilation. Ensure curtains or other objects never cover the ventilation slots on the product.

### Risk of contamination!

- Do not mix batteries (old and new or carbon and alkaline, etc.).
- Remove batteries if they are exhausted or if the remote control is not to be used for a long time.
- Batteries contain chemical substances, they should be disposed of properly.

---

## Product care

- Do not insert any objects other than discs into the disc compartment.
- Do not insert warped or cracked discs into the disc compartment.
- Remove discs from the disc compartment if you are not using the product for an extended period of time.
- Only use microfiber cloth to clean the product.

## Disposal of your old product and batteries



Your product is designed and manufactured with high quality materials and components, which can be recycled and reused.



When this crossed-out wheeled bin symbol is attached to a product it means that the product is covered by the European Directive 2002/96/EC. Please inform yourself about the local separate collection system for electrical and electronic products.

Please act according to your local rules and do not dispose of your old products with your normal household waste.

Correct disposal of your old product helps to prevent potential negative consequences for the environment and human health.



Your product contains batteries covered by the European Directive 2006/66/EC, which cannot be disposed with normal household waste.

Please inform yourself about the local rules on separate collection of batteries because correct disposal helps to prevent negative consequences for the environmental and human health.

## 3D health warning

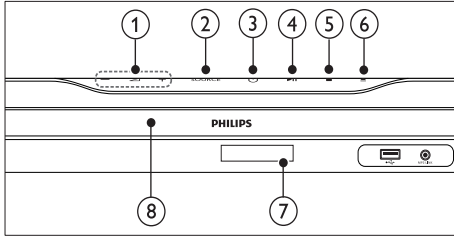
If you or your family has a history of epilepsy or photosensitive seizures, consult a medical professional before exposing yourself to flashing light sources, rapid image sequences or 3D viewing.

To avoid discomfort such as dizziness, headache or disorientation, we recommend not watching 3D for extended periods of time. If you experience any discomfort, stop watching 3D and do not immediately engage in any potentially hazardous activity (for example driving a car) until your symptoms have disappeared. If symptoms persist, do not resume watching 3D without consulting a medical professional first. Parents should monitor their children during 3D viewing and ensure they do not experience any discomfort as mentioned above. Watching 3D is not recommended for children under six years of age as their visual system is not fully developed yet.

## 2 Your home theater

Congratulations on your purchase, and welcome to Philips! To fully benefit from the support that Philips offers, register your home theater at [www.philips.com/welcome](http://www.philips.com/welcome).

### Main unit



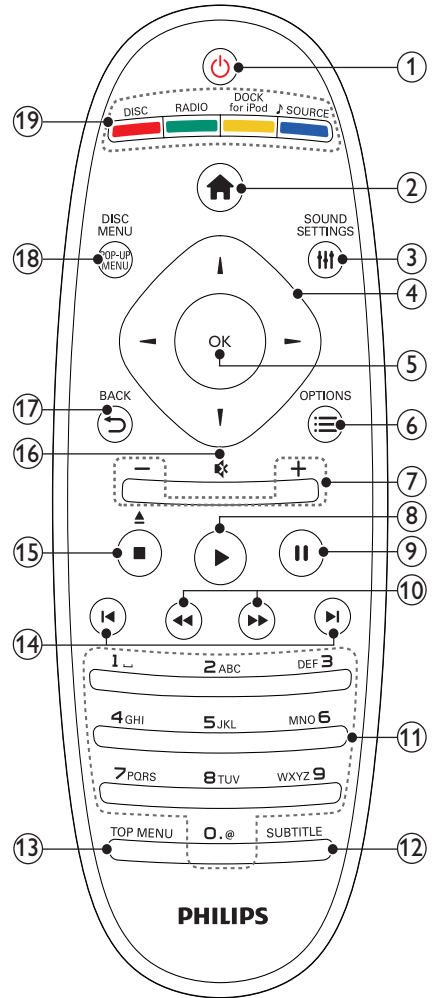
- ① **+/- (Volume)**  
Increases or decreases volume.
- ② **SOURCE**  
Selects an audio/video source for the home theater.
- ③ **⏻ (Standby-On)**  
Switches on the home theater or switches to standby mode.
- ④ **▶|| (Play/Pause)**  
Starts, pauses or resumes play.
- ⑤ **■ (Stop)**  
Stops play.
- ⑥ **▲ (Open/Close)**  
Opens or closes the disc compartment.
- ⑦ **Display panel**
- ⑧ **Disc compartment**

### Remote control

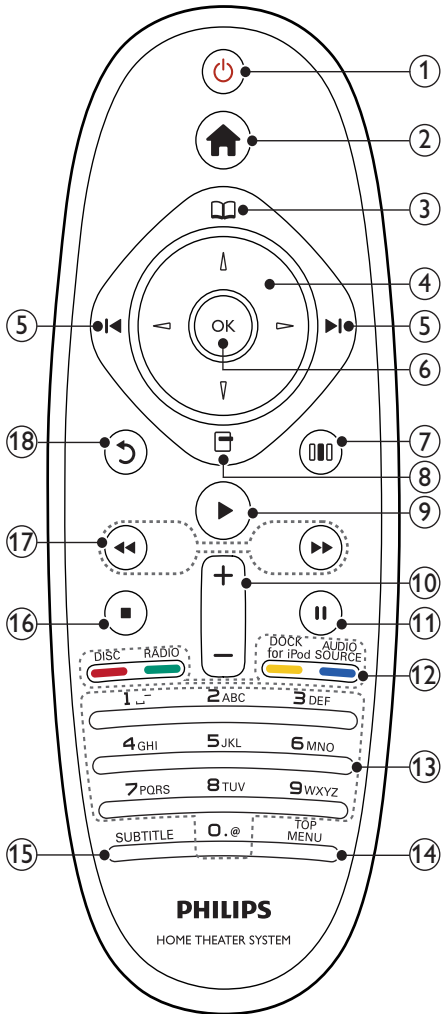
#### Note

- Your home theater is supplied with one of the following remote controls.

### Remote control - A



- ① **⏻ (Standby-On)**
  - Switches the home theater on or to standby.
  - When EasyLink is enabled, press and hold for at least three seconds to switch all connected HDMI CEC compliant devices to standby.
- ② **🏠 (Home)**  
Accesses the home menu.
- ③ **🔊SOUND SETTINGS**  
Accesses or exits various sound options.
- ④ **Navigation buttons**
  - Navigates menus.
  - In radio mode, press left or right to start auto search.
- ⑤ **OK**
  - Confirms an entry or selection.
- ⑥ **☰OPTIONS**
  - Accesses more play options during playback.
  - In radio mode, programs radio stations.
- ⑦ **+/- (Volume)**  
Increases or decreases volume.
- ⑧ **▶ (Play)**  
Starts or resumes play.
- ⑨ **⏸ (Pause)**  
Pauses play.
- ⑩ **⏮ / ⏭ (Fast Backward/Fast Forward)**  
Fast backwards or fast forwards. Press repeatedly to change the search speed.
- ⑪ **Alphanumeric buttons**  
Enters values or letters (using SMS style entry).
- ⑫ **SUBTITLE**  
Selects subtitle language for video.
- ⑬ **TOP MENU**  
Accesses the main menu of a video disc.
- ⑭ **⏮ / ⏭ (Previous/Next)**
  - Skips to the previous or next track, chapter or file.
  - In radio mode, selects a preset radio station.
- ⑮ **■ (Stop) / ▲ (Eject / Open/Close)**
  - Stops play.
  - Press and hold to eject the disc or open the disc compartment.
  - In radio mode, erases the current preset radio station.
- ⑯ **🔇 (Mute)**  
Mutes or restores volume.
- ⑰ **↶ BACK**  
Returns to a previous menu screen.
- ⑱ **POP-UP MENU/DISC MENU**  
Accesses or exits the disc menu.
- ⑲ **Source buttons**
  - **Color buttons** (for Blu-ray discs):  
Selects tasks or options.
  - **DISC**: Switches to disc source.
  - **RADIO**: Switches to FM radio.
  - **DOCK for iPod**: Switches to Philips Dock for iPod/iPhone.
  - **🔊SOURCE**: Selects an audio input source.



- ① **⏻ (Standby-On)**
  - Switches the home theater on or to standby.
  - When EasyLink is enabled, press and hold for at least three seconds to switch all connected HDMI CEC compliant devices to standby.
- ② **🏠 (Home)**  
Accesses the home menu.
- ③ **📀 (Disc menu)**  
Accesses or exits the disc menu.
- ④ **Navigation buttons**
  - Navigates menus.
  - In radio mode, press left or right to start auto search.
- ⑤ **⏮ / ⏭ (Previous/Next)**
  - Skips to the previous or next track, chapter or file.
  - In radio mode, selects a preset radio station.
- ⑥ **OK**  
Confirms an entry or selection.
- ⑦ **🔊 (Sound options)**  
Accesses or exits various sound options.
- ⑧ **📺 (Options)**
  - Accesses more play options during playback.
  - In radio mode, programs radio stations.
- ⑨ **▶ (Play)**  
Starts or resumes play.
- ⑩ **+/- (Volume)**  
Increases or decreases volume.
- ⏸ **(Pause)**  
Pauses play.
- ⑫ **Source buttons / Color buttons**
  - Blu-ray discs: Selects tasks or options.
  - AUDIO SOURCE:** Selects an audio input source.
  - DOCK for iPod:** Switches to Philips Dock for iPod/iPhone.
  - RADIO:** Switches to FM radio.
  - DISC:** Switches to disc source.
- ⑬ **Alphanumeric buttons**  
Enters values or letters (using SMS style entry).



- ⑭ **TOP MENU**  
Accesses the main menu of a video disc.
- ⑮ **SUBTITLE**  
Selects subtitle language for video.
- ⑯ **■ (Stop)**
- Stops play.
  - Press and hold to eject the disc or open the disc compartment.
  - In radio mode, erases the current preset radio station.
- ⑰ **⏮ / ⏭ (Fast Backward/Fast Forward)**  
Fast backwards or fast forwards. Press repeatedly to change the search speed.
- ⑱ **⏮ (Back)**  
Returns to a previous menu screen.

## 3 Connect your home theater

This section helps you connect your home theater to a TV and other devices. The basic connections of the home theater with its accessories are provided in the Quick Start. For a comprehensive interactive guide, see [www.connectivityguide.philips.com](http://www.connectivityguide.philips.com).



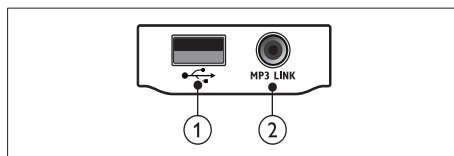
### Note

- Refer to the type plate at the back or bottom of the product for identification and supply ratings.
- Before you make or change any connections, ensure that all devices are disconnected from the power outlet.

## Connectors

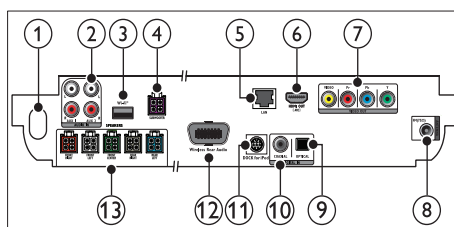
Connect other devices to your home theater.

### Front connectors



- ① **USB**  
Audio, video or picture input from a USB storage device.
- ② **MP3 LINK**  
Audio input from an MP3 player.

### Back connectors



- ① **AC MAINS~**  
Connects to the power supply.
- ② **AUDIO IN-AUX 1/AUX 2**  
Connects to the analog audio output on the TV or an analog device.
- ③ **Wi-Fi®**  
Connects to a Wi-Fi USB adapter.(Model: Philips WUB1110, sold separately.)
- ④ **SUBWOOFER**  
Connects to the supplied subwoofer.
- ⑤ **LAN**  
Connects to the LAN input on a broadband modem or router.
- ⑥ **HDMI OUT (ARC)**  
Connects to the HDMI input on the TV.
- ⑦ **VIDEO OUT**  
Connects to the video input on the TV.
- ⑧ **ANTENNA FM 75 Ω**  
Signal input from an antenna, cable or satellite.
- ⑨ **DIGITAL IN-OPTICAL**  
Connects to the optical audio output on the TV or a digital device.
- ⑩ **DIGITAL IN-COAXIAL**  
Connects to the coaxial audio output on the TV or a digital device.
- ⑪ **DOCK for iPod**  
Connects to a Philips Dock for iPod/iPhone. (Model: Philips DCK3060)
- ⑫ **Wireless Rear Audio**  
Connects to a Philips wireless module. (Model: Philips RWSS9500, sold separately.)
- ⑬ **SPEAKERS**  
Connects to the supplied speakers.

## Connect to the TV

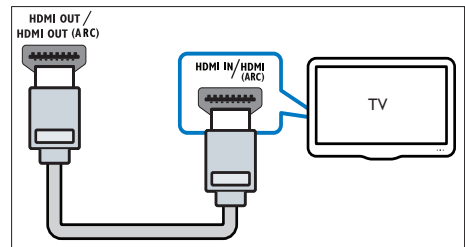
Connect your home theater directly to a TV through one of the following connectors (from highest to basic quality video):

- ① **HDMI**
- ② **Component video**
- ③ **Composite video**

### Option 1: Connect to the TV through HDMI

#### Note

- The HDMI connector on the TV might be labeled **HDMI IN** or **HDMI ARC**.
- If the TV supports HDMI Audio Return Channel (ARC), you can use it to output digital audio to the home theater.
- If the HDTV has a DVI connector; connect using an HDMI/DVI adapter.
- If the TV supports EasyLink HDMI CEC, control the home theater and TV with one remote control (see 'Use Philips EasyLink' on page 18).

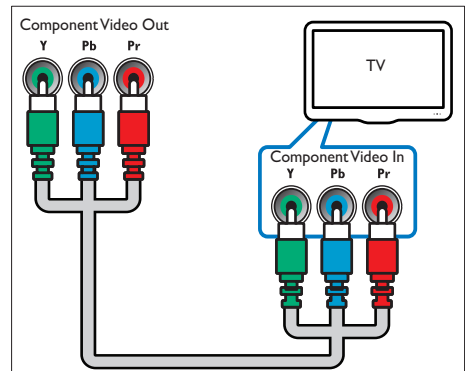


### Option 2: Connect to the TV through YPbPr (component video)

#### Note

- The component video cable or connector might be labeled **Y Cb Cr** or **YUV**.

(Cable not supplied)

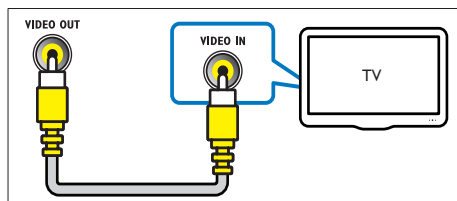


### Option 3: Connect to the TV through composite video (CVBS)

#### Note

- The composite video cable or connector might be labeled **AV IN**, **VIDEO IN**, **COMPOSITE** or **BASEBAND**.

(Cable not supplied)



## Connect audio from TV or other devices

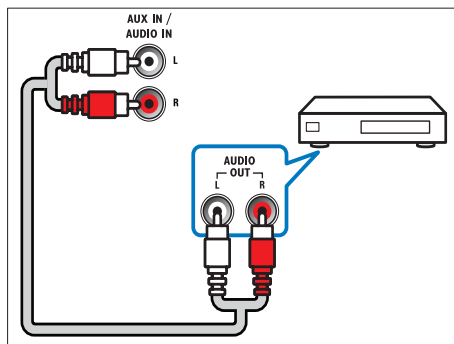
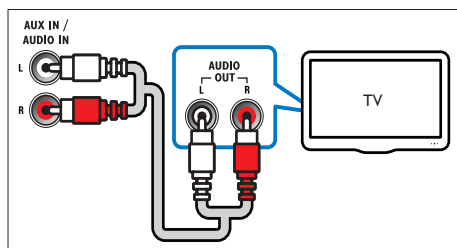
Use your home theater to play audio from the TV or other devices such as a cable box.

#### Tip

- Press **SOURCE / AUDIO SOURCE** repeatedly to select the audio output of your connection.

### Option 1: Connect audio through analog audio cables

(Cable not supplied)

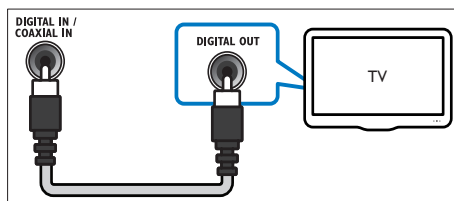


### Option 2: Connect audio through coaxial cable

#### Note

- The digital coaxial cable or connector might be labeled **COAXIAL/DIGITAL OUT** or **SPDIF OUT**.

(Cable not supplied)

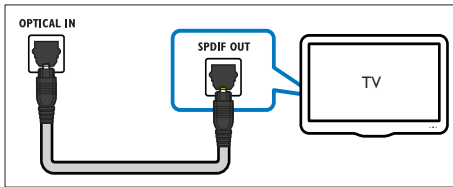


### Option 3: Connect audio through a digital optical cable

#### Note

- The digital optical cable or connector might be labeled as **SPDIF OUT** or **OPTICAL OUT**.

(Cable not supplied)



## Connect to a computer network and the Internet

Connect the home theater to a computer network and enjoy:

- **Multimedia content streamed from your computer** : view photos, play music and watch video files streamed from your computer (see 'Play from PC (DLNA)' on page 16).
- **Net TV** : browse Net TV services (see 'Browse Net TV' on page 17).
- **Software update** : update the software of the home theater through the network (see 'Update software from the network' on page 22).

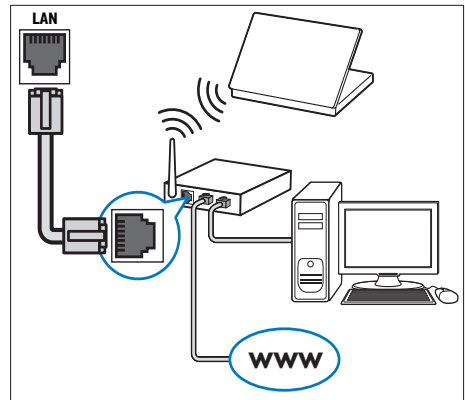
### What you need:

- A network router (with DHCP enabled).
- A network cable (RJ45 straight cable).
- A computer with media server software installed (see 'Set up media server software' on page 16).
- For Net TV and software update, make sure that the network router has access to the Internet and is not restricted by firewalls or other security systems.

### Note

- Net TV feature not available in China and Latin America

(Cable not supplied)



## Set up network

- 1 Connect the home theater to a network router through wired or wireless network connection (see 'Connect a Wi-Fi USB adapter' on page 11).
- 2 Turn on your TV and switch to the correct source for the home theater.
- 3 Press **⬆** (Home).
- 4 Select **[Setup]**, then press **OK**.
- 5 Select **[Network] > [Network Installation]**, then press **OK**.
  - For wired network, select **[Wired (Ethernet)]** and press **OK**.
  - For wireless network, select **[Wireless (Wi-Fi)]** and press **OK**.
- 6 Follow the instructions on the TV to complete the setup.
  - ↳ The home theater connects to the internet. If connection fails, select **[Retry]**, then press **OK**.
- 7 Select **[Finish]**, then press **OK** to exit.

### Caution

- Familiarize yourself with the network router, media server software and networking principles before attempting to connect the home theater to a computer network. If necessary, read documentation accompanying network components. Philips is not responsible for lost, damaged or corrupt data.

## Connect a Wi-Fi USB adapter

Purchase a Wi-Fi USB adapter (model: PHILIPS WUB1110) and set up the wireless network (see 'Set up network' on page 10).

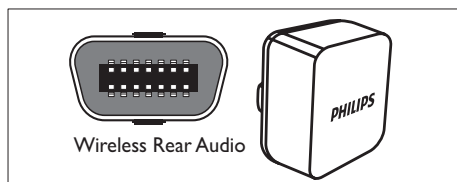


## Connect a wireless module

### Note

- When you connect and switch on the wireless module, the rear speaker connectors on the home theater are muted, the rear surround sound is output through the connectors on the wireless receiver.

(Wireless module not supplied - Philips RWSS9500)



## 4 Use your home theater

This section helps you use the home theater to play media from a wide range of sources.

### Before you start

Check that you:

- Make the necessary connections described in the Quick Start and User Manual.
- Complete the first time setup. First time setup appears when you turn on the home theater for the first time. If you do not complete the setup, you are prompted to complete it each time you turn on the home theater.
- Switch the TV to the correct source for the home theater.

### Access the home menu

The home menu gives you easy access to connected devices, audio and video settings, and other features.

- Press **⬆ (Home)**.  
➡ The home menu appears.
- Press the **Navigation buttons** and **OK** to select the following:
  - [play Disc]** : Starts disc play.
  - [browse USB]** : Accesses the content browser of the connected USB storage device.
  - [browse iPod]** : Accesses the content browser of the connected iPod or iPhone.
  - [browse PC]** : Accesses the content browser of the connected PC network.
  - [browse Net TV]** : Accesses Net TV.
  - [Setup]** : Accesses menus to change picture, sound and other settings.
  - [User Manual]** : Launches the electronic user manual.

# Choose your sound

This section helps you choose the ideal sound for your video or music.

- 1 Press **⏮SOUND SETTINGS / 🔊** (Sound options).
- 2 Press the **Navigation buttons** (left/right) to access the sound options.

Sound experience	Description
<b>AUTO VOLUME</b>	Sets a constant output signal at the speaker output. This option is best for TV audio input where the commercial signal level is usually higher than the content.
<b>SOUND</b>	Selects a sound mode.
<b>SURROUND</b>	Selects a surround sound or stereo sound.
<b>TREBLE</b>	Adjusts the high frequency output.
<b>MID</b>	Adjusts the middle frequency output.
<b>BASS</b>	Adjusts the low frequency output.
<b>AUDIO SYNC</b>	Delays the audio to match the video.

- 3 Select an option, then press **OK**.
- 4 Press **↩BACK** to exit.
- If you do not press a button within five seconds, it automatically exits the menu.

## Change auto volume

Select the level of volume which output from your TV or other devices to the home theater.

- 1 Press **⏮SOUND SETTINGS / 🔊** (Sound options).
- 2 Select **AUTO VOLUME**, then press **OK**.
- 3 Press the **Navigation buttons** (up/down) to select **ON** or **OFF**.
- 4 Press **OK** to confirm your choice.

# Change sound mode

Select predefined sound modes to suit your video or music.

- 1 Press **⏮SOUND SETTINGS / 🔊** (Sound options).
- 2 Select **SOUND**, then press **OK**.
- 3 Press the **Navigation buttons** (up/down) to select the following settings:
  - **ACTION/ROCK** : Enhanced low and high-range. Ideal for action movies and rock or pop music.
  - **DRAMA/JAZZ** : Clear mid and high-range. Ideal for drama movies and jazz music.
  - **GAMING/PARTY** : Moderate low-range and strong mid-range. Ideal for video games and party.
  - **CONCERT/CLASSIC** : Neutral sound. Ideal for live concerts and classical music.
  - **SPORTS** : Moderate mid-range and surround effects for clear vocals and the atmosphere of a live sport venue.
  - **NEWS** : Enhanced mid-range for clear vocals and speech.
- 4 Press **OK** to confirm your choice.

## Change surround sound mode

Experience an immersive audio experience with surround sound modes.

- 1 Press **⏮SOUND SETTINGS / 🔊** (Sound options).
- 2 Select **SURROUND**, then press **OK**.
- 3 Press the **Navigation buttons** (up/down) to select the following settings:
  - **360SOUND** : 9.1 surround sound mode, best cinematic experience.
  - **360SOUND STEREO** : Enhanced stereo mode with 4.1 channels.
  - **STEREO** : Two-channel stereo sound. Ideal for listening to music.
  - **MULTI-CH** : Traditional 5.1 channels for a more relaxing cinematic experience.
- 4 Press **OK** to confirm your choice.

## Change treble, mid and bass

Change the high frequency (treble), mid frequency (mid) and low frequency (bass) settings of the home theater to suit your video or music.

- 1 Press **SOUND SETTINGS** / **[SOUND]** (Sound options).
- 2 Select **TREBLE**, **MID** or **BASS**, then press **OK**.
- 3 Press the **Navigation buttons** (up/down) to adjust the frequency level.
- 4 Press **OK** to confirm.

## Synchronize audio with video

If the audio and video are not synchronized, you can delay the audio to match the video.

- 1 Press **SOUND SETTINGS** / **[SOUND]** (Sound options).
- 2 Select **AUDIO SYNC**, then press **OK**.
- 3 Press the **Navigation buttons** (up/down) to sync the audio with the video.
- 4 Press **OK** to confirm.

## Play a disc

The home theater can play a wide variety of discs, including video, audio and mixed media (for example, a CD-R that contains JPEG pictures and MP3 music).

- 1 Insert a disc into the home theater.
- 2 Press **DISC**, or select **[play Disc]** in the home menu and press **OK**.  
 ↳ The disc plays or the disc main menu appears.
- 3 Press the following buttons to control play:

Button	Action
<b>Navigation buttons</b>	Navigate menus.
<b>OK</b>	Confirms an entry or selection.
<b>▶(Play)</b>	Starts or resumes play.
<b>  </b>	Pauses play.
<b>■</b>	Stops play.
<b>◀ / ▶</b>	Skips to the previous or next track, chapter or file.
<b>◀◀ / ▶▶</b>	Fast backwards or fast forwards. Press repeatedly to change the search speed.
<b>Navigation buttons</b> (up/down)	Rotates the picture counter-clockwise or clockwise.
<b>SUBTITLE</b>	Selects subtitle language for video.
<b>POP-UP MENU / DISC MENU</b> / <b>[DISC menu]</b>	Accesses or exits the disc menu.
<b>≡OPTIONS</b> / <b>[Options]</b>	Accesses more play options during playback.

For video formats such as, DivX and WMV:

- To stop play, press **■**.
- To resume the video from where you stopped, press **▶(Play)**.
- To play the video from the start, press **OK**.



### Note

- To play DivX DRM - protected files from a disc or a USB storage device, connect your home theater to a TV through an HDMI cable.

## Use Bonus View on Blu-ray

Blu-ray discs that support the Bonus View feature (also known as Picture-In-Picture) allow you to view special content such as a director's commentary while watching the main feature.

- 1 If necessary, enable BonusView (or Picture-In-Picture) in the Blu-ray disc menu.
- 2 During playback of the main feature, press **≡OPTIONS** / **[Options]**.  
 ↳ The options menu is displayed.

- 3 Select **[PIP Selection]** > **[PIP]**, then press **OK**.
  - ↳ PIP options [1]/[2] depend on the video contents.
  - ↳ The picture-in-picture video appears in a small window.
- 4 Select **[2nd Audio Language]** or **[2nd Subtitle Language]**, then press **OK**.
- 5 Select the language to play, then press **OK**.

#### Note

- To turn off the Bonus View (Picture-in-Picture), press **≡****OPTIONS** / **Ⓞ** (**Options**), select **[PIP Selection]** > **[Off]**, then press **OK**.

## Access BD-Live on Blu-ray

BD-Live enabled Blu-ray discs include exclusive services such as movies and other online bonuses.

- 1 Prepare the internet connection and set up the network (see 'Connect to a computer network and the Internet' on page 10).
- 2 Connect the USB storage device to the home theater.
- 3 Select the BD-Live icon in the disc menu, then press **OK**.
  - ↳ BD-Live starts to load. The loading time depends on the disc and your internet connection.
- 4 Press the **Navigation buttons** to navigate BD-Live.
- 5 Press **OK** to select an item.

#### Note

- The range of BD-Live services depends on the disc.
- When you use BD-Live, data on the disc and home theater are accessed by the content provider.
- Use a USB storage device with at least 1GB of free space to store the downloaded files.
- If there is insufficient memory to download BD-Live content, clear memory space.

## Play 3D video

Your home theater can play 3D videos on 3D TVs.

**Before you start, make sure that:**

- your TV is a 3D TV, and is connected to your home theater through HDMI,
- your disc is a Blu-ray 3D disc, and
- you have 3D glasses that are compatible with your 3D TV.

- 1 Insert a Blu-ray 3D disc into your home theater.
  - ↳ Your TV switches to the correct HDMI source, and the disc plays automatically.
- 2 If the disc does not play automatically, press **DISC** or select **[play Disc]** in the home menu, and then press **OK**.
- 3 Press the play buttons to control play. When you search forward or backward, and in some other play modes, the video displays in 2D. It returns to 3D when you play normally again.
- 4 Put on the 3D glasses to enjoy the 3D effects.

## Play 3D discs in 2D

- 1 Press **⬆** (**Home**).
- 2 Select **[Setup]** > **[Video]** > **[Blu-ray 3D video]** > **[Off]**.
- 3 Press **OK**.
- 4 Play your Blu-ray 3D disc.
  - ↳ The 3D video is displayed in 2D.

## Play from a USB storage device

The home theater is fitted with a USB connector that allows you to view pictures, listen to music or watch movies stored on a USB storage device.

- 1 Connect the USB storage device to the home theater.
- 2 Press **⬆** (**Home**).
  - ↳ The home menu appears.
- 3 Select **[browse USB]**, then press **OK**.
  - ↳ A content browser appears.
- 4 Select a file, then press **OK**.



- 5 Press the playback buttons to control play (see 'Play a disc' on page 13).

### Note

- If the USB storage device does not fit into the connector, use a USB extension cable.
- The home theater does not support digital cameras that need a computer program to display photos.
- The USB storage device must be NTFS, FAT or DOS-formatted, and Mass Storage Class compliant.

## More play features for disc or USB

Several advanced features are available for video or picture playback from a disc or USB storage device.

### Use video options

Access several useful features while viewing video.

### Note

- Available video options depend on the video source.

- 1 Press **≡OPTIONS** / **Ⓞ (Options)**.  
→ The video options menu appears.
- 2 Press the **Navigation buttons** and **OK** to select and adjust:
  - **[Audio Language]** : Selects audio language for video.
  - **[Subtitle Language]** : Selects subtitle language for video.
  - **[Subtitle Shift]** : Adjusts the subtitle position on the screen.
  - **[Info]** : Displays information about what is playing.
  - **[Character Set]** : Selects a character set that supports the DivX subtitle.
  - **[Time Search]** : Skips to a specific part of the video by entering the time of the scene.

- **[2nd Audio Language]** : Selects the second audio language to play.
- **[2nd Subtitle Language]** : Selects the second subtitle language to play.
- **[Titles]** : Selects a specific title.
- **[Chapters]** : Selects a specific chapter.
- **[Angle List]** : Selects a different camera angle.
- **[Menus]** : Displays the disc menu.
- **[PIP Selection]** : Displays Picture-in-Picture window.
- **[Zoom]** : Zooms into a video scene or picture. Press the **Navigation buttons** (left/right) to select a zoom factor.
- **[Repeat]** : Repeats a chapter or title.
- **[Repeat A-B]** : Marks two points within a chapter or track for repeat play, or turns off repeat mode.
- **[Picture Settings]** : Selects a predefined color setting.

### Use picture options

Access several useful features while viewing pictures.

- 1 Press **≡OPTIONS** / **Ⓞ (Options)**.  
→ The pictures options menu appears.
- 2 Press the **Navigation buttons** and **OK** to select and adjust:
  - **[Rotate +90]** : Rotates the picture 90 degree clockwise.
  - **[Rotate -90]** : Rotates the picture 90 degree counter-clockwise.
  - **[Zoom]** : Zooms into a video scene or picture. Press the **Navigation buttons** (left/right) to select a zoom factor.
  - **[Info]** : Displays picture information.
  - **[Duration per slide]** : Sets the display speed for each picture in a slide show.
  - **[Slide Animation]** : Selects animation for the slide show.
  - **[Picture Settings]** : Selects a predefined color setting.
  - **[Repeat]** : Repeats a selected folder.

---

## Use audio options

Access several useful features while audio is played.

- 1 Press **≡** **OPTIONS** / **Ⓞ** (**Options**) repeatedly to cycle through the following functions:
  - **REPEAT TRACK** : Repeats the current track.
  - **REPEAT DISC** : Repeats all the tracks on the disc or folder.
  - **REPEAT RANDOM** : Plays audio tracks in random order.
  - **REPEAT OFF** : Turns off repeat mode.

---

## Play a musical slideshow

Play music and pictures simultaneously to create a musical slideshow.

- 1 Select a music track, then press **OK**.
- 2 Press **↩** **BACK** and go to the picture folder.
- 3 Select a picture, then press **OK** to start slideshow.
- 4 Press **■** to stop slideshow.
- 5 Press **■** again to stop music.

---

## Play from PC (DLNA)

When you connect your home theater to your home network, you can play music, photo, and video from a computer or other media server on that network.

### What you need:

- A wired or wireless home network, connected with a Universal Plug and Play (uPnP) router.
- A Philips wireless USB adapter or a LAN able to connect your home theater to your home network.
- A media server such as:
  - PC running Windows Media Player 11 or higher; or
  - Mac running Twonky Media Server.

For help to use other media servers, such as TVersity, see the web site of the media server.

---

## Set up media server software

### Before you start:

- Connect your home theater to your home network (see 'Connect to a computer network and the Internet' on page 10).
- Connect your PC to the same home network.
- Make sure that your PC firewall allows you to run Windows Media Player programs.

### In Microsoft Windows Media Player 11

- 1 Connect the home theater to a network router (see 'Connect to a computer network and the Internet' on page 10).
- 2 Switch on the computer and router.
- 3 Open Windows Media Player on the computer.
- 4 Select **Library > Media Sharing**, then select settings to share your media.
- 5 Select **Library > Add to Library**, then select settings to share the folder containing your media.
- 6 Select **Advanced options**, then add the folders to share.
- 7 Select **Library > Apply Media Information Changes** to activate the changes.

### In Macintosh OS X Twonky Media (v4.4.2)

- 1 Connect the home theater to a network router (see 'Connect to a computer network and the Internet' on page 10).
- 2 Switch on the Macintosh and router.
- 3 Visit [www.twonkymedia.com](http://www.twonkymedia.com) to purchase the software or download a free 30-day trial to your Macintosh.
- 4 Open Twonky Media on the Macintosh.
  - ↳ The media sharing setting is turned on by default, thus enabling you to directly add folders for media sharing.
- 5 Select **Basic Setup > Sharing**, then select settings to add a folder location or add more folders.
- 6 Select **Save Changes** to activate the changes.

## Play multimedia content

### Note

- Before playing multimedia content from the computer, ensure that the home theater is connected to the computer network and the media server software is properly set up.

- 1 Press **⬆** (Home).  
↳ The home menu appears.
- 2 Select **[browse PC]**, then press **OK**.  
↳ A content browser appears.
- 3 Select a file, then press **OK**.
- 4 Press the playback buttons to control play (see 'Play a disc' on page 13).

## Browse Net TV

With the home theater connected to the Internet, you can use Net TV to access videos, pictures, music, information, games and other online services.

### Note

- Koninklijke Philips Electronics N.V. bears no responsibility for content provided by Net TV service providers.

(Net TV feature not available in China and Latin America)

## Access Net TV

- 1 Prepare the internet connection and set up the network (see 'Connect to a computer network and the Internet' on page 10).
- 2 Press **⬆** (Home).  
↳ The home menu appears.
- 3 Select **[browse Net TV]**, then press **OK**.  
↳ The Net TV home page appears.
- 4 Press the **Navigation buttons** to navigate Net TV web pages or services.
- 5 Press **OK** to view or select an item.
- 6 Press **↶ BACK** to return to the previous page, or press **⬆** (Home) to exit.

## Clear browsing history

Clear browsing history to remove passwords, cookies and browsing data from your home theater.

- 1 Press **⬆** (Home).
- 2 Select **[Setup]**, then press **OK**.
- 3 Select **[Network] > [Clear Net TV Memory]**, then press **OK**.

## Play from radio

The home theater can store up to 40 radio stations.

- 1 Check that the FM antenna is connected.
- 2 Press **RADIO**.  
↳ "AUTO INSTALL...PRESS PLAY" appears on the display panel if you have not installed any radio stations. Press **▶(Play)**.
- 3 Press the following buttons to control play:

Button	Action
<b>⏮ / ⏭</b>	Selects a preset radio station.
<b>Navigation buttons</b> (left/right)	Searches for a radio station.
<b>Navigation buttons</b> (up/down)	Fine tunes a radio frequency.
<b>■</b>	Press and hold to erase the preset radio station. Press to stop the installation of radio stations.
<b>≡</b> <b>OPTIONS /</b> <b>☐ (Options)</b>	Manual: Press once to access program mode, and press again to store the radio station. Automatic: Press and hold for five seconds to reinstall radio stations.
<b>RADIO</b>	Toggles between stereo and mono sound.

### Note

- AM and digital radio are not supported.
- If no stereo signal is detected, you are prompted to install the radio stations again.
- For the best reception, place the antenna away from the TV or other sources of radiation.

---

## Change tuning grid

In some countries, you can switch the FM tuning grid between 50 kHz and 100 kHz. Changing the tuning grid erases all preset radio stations.

- 1 Press **RADIO**.
- 2 Press **■ (Stop)**.
- 3 Press and hold **▶ (Play)** to toggle between 100 kHz and 50 kHz frequency.

---

## Play audio from TV or other devices

Press **JSOURCE / AUDIO SOURCE** repeatedly to select the audio output of the connected device.

---

## Play from an MP3 player

Connect and play audio files from an MP3 player or other external audio devices.

- 1 Connect the MP3 player to the home theater as described in the Quick start guide.
- 2 Press **JSOURCE / AUDIO SOURCE** repeatedly until '**MP3 LINK**' appears on the display panel.
- 3 Press the buttons on the MP3 player to select and play audio files.

---

## Play from an iPod or iPhone

By connecting and installing a Philips Dock for iPod/iPhone, you can use the home theater to play music, movies and photos from your iPod or iPhone.



### Note

- Philips Dock for iPod/iPhone is sold separately.
- You can charge your iPod/iPhone on the dock while the home theater is in iPod mode.

---

## Dock your iPod or iPhone

- 1 Connect the dock to the home theater and connect the yellow composite cable from the dock to the TV. For more information, see the Quick Start provided with the dock.
- 2 Switch on the iPod or iPhone and place it in the dock.
- 3 On the home theater remote control, press **⬆ (Home)**, then select **[browse iPod]** and press **OK**.

---

## Listen to music

- 1 Dock your iPod or iPhone (see 'Dock your iPod or iPhone' on page 18).
- 2 Press **DOCK for iPod** on the home theater remote control.  
↳ The playlists are displayed on the TV.
- 3 Press the **Navigation buttons** and **OK** to select and play tracks.

---

## Watch video or view slideshows



### Note

- On iPod, enable the TV ON setting.
- On iPhone, select the TV Out option.

- 1 Dock your iPod or iPhone (see 'Dock your iPod or iPhone' on page 18).
- 2 Switch the TV to the **AV/VIDEO** source (corresponding to the yellow composite cable).  
↳ The TV screen goes blank.
- 3 Browse on the iPod or iPhone screen to select videos or photos.
- 4 Press **▶ (Play)** to play the video and photos.  
↳ The picture is displayed on the TV.

---

## Use Philips EasyLink

The home theater supports Philips EasyLink, which uses the HDMI CEC (Consumer Electronics Control) protocol. EasyLink-compliant devices that are connected through HDMI connectors can be controlled by a single remote control.

## Note

- Philips does not guarantee 100% interoperability with all HDMI CEC devices.

- 1 Switch on the HDMI CEC operations on the TV and other connected devices. See the manual of the TV or other devices for details.
- 2 Press **⬆** (Home).
- 3 Select **[Setup]**, then press **OK**.
- 4 Select **[EasyLink]** > **[EasyLink]**, then press **OK**.
- 5 Select **[On]**, then press **OK**.
- 6 You can now enjoy the following Philips EasyLink controls.

### One-touch play

When you play a disc, the TV automatically switches to the correct channel.

### One-touch standby

When you press and hold **⏻** (Standby) on the remote control, the home theater and all the connected HDMI CEC devices (if they support one-touch standby) switch to standby mode simultaneously.

### System Audio Control

When you play a device that has its audio output routed to the home theater, the home theater switches to the corresponding audio source automatically.

To use one-touch audio, enable this feature and follow the instructions on the TV to map the connected devices correctly to the audio input jacks of the home theater.

### Audio Input Mapping

Updates audio input mapping if there are new devices connected.

## 5 Change settings

This section helps you to change the settings of your home theater.



### Caution

- Most of the settings are already configured with the best value for the home theater. Unless you have a specific reason to change a setting, it is best to leave it at the default value.

## Access the setup menu

- 1 Press **⬆** (Home).
- 2 Select **[Setup]**, then press **OK**.  
➡ The setup menu appears.
- 3 Select a setup menu, then press **OK**.  
See the following sections for information about how to change the settings of your home theater.
- 4 Press **⬅** BACK to return to the previous menu, or press **⬆** to exit.



### Note

- You cannot change a setting that is grayed out.

## Change video settings

- 1 Press **⬆** (Home).
- 2 Select **[Setup]**, then press **OK**.
- 3 Select **[Video]**, then press **OK**.
- 4 Select and adjust the following settings:
  - [TV Display]**: Selects a picture display format to fit the TV screen.
  - [HDMI Video]**: Selects the HDMI video resolution.
  - [HDMI Deep Color]**: Displays colors with more shades and hues when the video content is recorded in Deep Color and the TV supports this feature.

- **[Component Video]:** Selects the component video resolution. Copy-protected DVDs can display only 480p/576p or 480i/576i.
- **[Blu-ray 3D video]:** Selects the 3-dimensional video output when you play a 3D video on your home theater. The home theater must be connected to a 3D TV through HDMI.
- **[Picture Settings]:** Selects a predefined color setting.

5 Press **OK** to confirm your choice.

#### Note

- The best setting is automatically selected for the TV. If you change the setting, ensure that the TV supports the new setting.
- For settings related to HDMI, the TV must be connected through HDMI.
- For settings related to progressive or component video, the TV must be connected through Component Video.

## Change audio settings

- 1 Press **▲** (Home).
- 2 Select **[Setup]**, then press **OK**.
- 3 Select **[Audio]**, then press **OK**.
- 4 Select and adjust the following settings:
  - **[Night Mode]** : Selects quiet or full dynamic sound. Night mode decreases the volume of loud sounds and increases the volume of soft sounds such as speech.
  - **[HDMI Audio]** : Selects HDMI audio format or disables HDMI audio output for the TV.
  - **[360Sound Setup]** : Basic 360Sound setup. This only performs the acoustics and rear speakers placement setup which is the minimum requirement for a 360Sound system.
  - **[Speaker Setup]** : Sets the volume level and distance of each speaker to obtain the best possible surround sound based on your room setup.

5 Press **OK** to confirm your choice.

#### Note

- For settings related to HDMI, the TV must be connected through HDMI.
- Night mode is available for Dolby encoded DVD and Blu-ray discs (for models support Blu-ray playback).

## Set up network

- 1 Press **▲** (Home).
- 2 Select **[Setup]**, then press **OK**.
- 3 Select **[Network]**, then press **OK**.
- 4 Select and adjust the following settings:
  - **[Network Installation]** : Starts wired (Ethernet) or wireless setup. Follow the instructions to set up the network connection.
  - **[View Network Settings]** : Displays the current network settings.
  - **[View Wireless Settings]** : Displays the current Wi-Fi settings.
  - **[Net TV User Location]** : Selects the location for accessing Net TV content and services.
  - **[Clear Net TV Memory]** : Clears Net TV memory, delete the temporary downloaded files (e.g., cookies) of the Net TV browser.
- 5 Press **OK** to confirm your choice.

## Set up EasyLink

- 1 Press **▲** (Home).
- 2 Select **[Setup]**, then press **OK**.
- 3 Select **[EasyLink]**, then press **OK**.
- 4 Select and adjust the following settings:
  - **[EasyLink]** : Enables or disables EasyLink.
  - **[One Touch Play]** : Enables or disables One Touch Play.  
If enabled, you can use the remote control to start disc play in the home theater and the TV switches automatically to the correct channel.

- **[One Touch Standby]** : Enables or disables One Touch Standby.  
If enabled, the home theater can be switched off to standby by a remote control from the TV or other connected HDMI CEC devices.
- **[System Audio Control]** : Enables or disables System audio control.  
If enabled, follow the instructions on the TV to map the connected devices correctly to the audio connectors of the home theater. The home theater switches automatically to the audio source of the connected device.
- **[Audio Input Mapping]** : Updates audio input mapping if there are new devices connected.

5 Press **OK** to confirm your choice.



#### Note

- The connected devices must be connected through HDMI and switched on.

## Change preference settings

- 1 Press **⬆** (Home).
- 2 Select **[Setup]**, then press **OK**.
- 3 Select **[Preference]**, then press **OK**.
- 4 Select and adjust the following settings:
  - **[Menu language]** : Selects the on-screen display menu language.
  - **[Audio]** : Selects audio language for video.
  - **[Subtitle]** : Selects subtitle language for video.
  - **[Disc Menu]** : Selects menu language for video disc.
  - **[Parental Control]** : Restricts access to discs that are recorded with ratings. To play all discs irrespective of the rating, select level '8'.
  - **[Screen Saver]** : Enables or disables screen saver mode. If enabled, the screen enters idle mode after 10 minutes of inactivity (for example, in pause or stop mode).

- **[Auto Subtitle Shift]** : Enables or disables shift subtitle. If enabled, it adjusts the subtitle position automatically to fit the TV screen.
- **[Change Password]** : Sets or changes a PIN code to play a restricted disc. Enter '0000' if you do not have a PIN or if you have forgotten your PIN.
- **[Display Panel]** : Changes the brightness of the display panel.
- **[Auto Standby]** : Enables or disables auto standby. If enabled, the home theater switches to standby after 30 minutes of inactivity (for example, in pause or stop mode).
- **[VCD PBC]** : Displays or skips the content menu for VCD and SVCD discs.
- **[Sleep Timer]** : Sets a sleep timer to switch the home theater to standby after a specific time.

5 Press **OK** to confirm your choice.



#### Note

- If your preferred disc language is not available, you can select **[Other]** from the list and enter the 4-digit language code which can be found at the back of this manual.
- If you select a language that is not available on a disc, the home theater uses the default language of the disc.

## Change advanced settings

- 1 Press **⬆** (Home).
- 2 Select **[Setup]**, then press **OK**.
- 3 Select **[Advanced]**, then press **OK**.
- 4 Select and adjust the following settings:
  - **[BD-Live Security]** : Restricts or allows access to BD-Live.
  - **[Enhanced Audio]** : Enables or disables the audio post processing at the speaker output.
  - **[Software Update]** : Selects to update software from the network or from USB storage device.

- **[Clear memory]** : Clears local memory, delete the BD-Live files that you previously downloaded. If using an USB storage device, the local storage folder is 'BUDA'.
- **[DivX® VOD Code]** : Displays the DivX VOD registration code for the home theater.
- **[Version Info.]** : Displays the software version for the home theater.
- **[Restore default settings]** : Resets the home theater to the default settings programmed at the factory.

5 Press **OK** to confirm your choice.

#### Note

- You cannot restrict internet access on commercial Blu-ray discs.
- Before you purchase DivX videos and play them on the home theater, register the home theater on [www.divx.com](http://www.divx.com) using the DivX VOD code.
- You cannot reset parental control setting to its default value.

## 6 Update software

To check for new updates, compare the current software version of your home theater with the latest software version (if available) on the Philips web site.

### Check software version

- 1 Press **⬆ (Home)**.
- 2 Select **[Setup]**, then press **OK**.
- 3 Select **[Advanced]** > **[Version Info.]**, then press **OK**.  
↳ The software version is displayed.

### Update software from the network

- 1 Prepare the internet connection (see 'Connect to a computer network and the Internet' on page 10).
- 2 Press **⬆ (Home)** and select **[Setup]**.
- 3 Select **[Advanced]** > **[Software Update]** > **[Network]**.  
↳ If an upgrade media is detected, you are prompted to start or cancel the update.
- 4 Follow the instruction on the TV to confirm the update.  
↳ When complete, the home theater automatically switches off and restarts.
  - If not, disconnect the power cord for a few seconds and then reconnect it.

#### Note

- If the home theater is unable to connect to the Philips server, press **⬆ (Home)**, select **[Setup]** > **[Network]** > **[Network Installation]** to set up the network.



## Update software from a USB

- 1 Check for the latest software version on [www.philips.com/support](http://www.philips.com/support).
  - Search for your model and click on 'software and drivers'.
- 2 Create a folder named 'UPG' in the root directory of your USB storage device.
- 3 Download the software into the 'UPG' folder of the USB storage device.
- 4 Unzip the software in the 'UPG' folder.
- 5 Connect the USB storage device to the home theater.
- 6 Press **⬆** (Home) and select **[Setup]**.
- 7 Select **[Advanced]** > **[Software Update]** > **[USB]**.
- 8 Follow the instructions on the TV to confirm the update.
  - ↳ When complete, the home theater automatically switches off and restarts.
  - If not, disconnect the power cord for a few seconds and then reconnect it.



### Caution

- Do not turn off the power or remove the USB storage device when the software update is in progress because you might damage the home theater.

- 6 Unzip the downloaded file in the root directory of the USB storage device.
  - ↳ A file named '**HTSxxxxeDFU.zip**' is extracted in the 'UPG' folder of your USB storage device, 'xxxx' being the model number of your home theater.
- 7 Disconnect the USB storage device from the PC, and connect it to the home theater.
- 8 Press **⬆** (Home).
  - Ensure that there is no disc inside the disc compartment of your home theater and it is closed.
- 9 Press **[3]**, **[3]**, **[8]** on the remote control.
  - ↳ Software update starts. When complete, the home theater automatically switches off and restarts.
- 10 When complete, disconnect the USB storage device from the home theater.



### Caution

- Do not turn off the power or remove the USB storage device during the update.
- If power failure occurs during the update, do not remove the USB flash drive from the home theater. The home theater continues the update as soon as the power is restored.
- If an error occurs during the update, retry the procedure. If the error reoccurs, contact Philips Consumer Care.

## Update electronic user manual

- 1 Check the current version of the electronic user manual installed in your home theater (see 'Check software version' on page 22).
- 2 Insert a USB storage device into your PC.
- 3 In your web browser, navigate to [www.philips.com/support](http://www.philips.com/support), and find your product.
- 4 Click on 'Software and drivers' in the left panel, and then locate the 'Electronic Manual'. The electronic user manual is compressed into a \*.zip archive.
- 5 If the \*.zip file at the Philips Support website is a later version than the file in your home theater, download the file in the root directory of your USB storage device.

# 7 Product specifications

## Note

- Specification and design are subject to change without notice.

## Region code

The type plate on the back or bottom of the home theater shows which regions it supports

Country	DVD	BD
Europe, United Kingdom		
Asia Pacific, Taiwan, Korea		
Latin America		
Australia, New Zealand		
Russia, India		
China		

## Playback media

- AVCHD, BD-RE, BD-Video, DVD-Video, DVD+R/+RW, DVD-R/-RW, DVD+R/-R DL, CD-R/CD-RW, Audio CD, Video CD/SVCD, Picture CD, MP3-CD, WMA-CD, DivX (Ultra)-CD, USB storage device

## File Format

- Audio: .mp3, .wma, .wav
- Video: .avi, .divx, .mp4, .mkv, .wmv
- Picture: .jpg, .gif, .png

## Amplifier

- Total output power: 800W RMS
- Frequency response: 40 Hz-20 kHz /  $\pm 3$ dB
- Signal-to-noise ratio: > 65 dB (CCIR) / (A-weighted)

- Input sensitivity:
  - AUX1, AUX2: 400 mV
  - MP3 LINK: 150 mV

## Video

- Signal system: PAL / NTSC
- Component video output: 480i/576i, 480p/576p, 720p, 1080i
- HDMI output: 480i/576i, 480p/576p, 720p, 1080i, 1080p, 1080p24

## Audio

- S/PDIF Digital audio input:
  - Coaxial: IEC 60958-3
  - Optical: TOSLINK
- Sampling frequency:
  - MP3: 32 kHz, 44.1 kHz, 48 kHz
  - WMA: 44.1 kHz, 48 kHz
- Constant bit rate:
  - MP3: 112 kbps - 320 kbps
  - WMA: 48 kbps - 192 kbps

## Radio

- Tuning range:
  - Europe/China: FM 87.5-108 MHz (50 kHz)
  - Asia Pacific/Russia/Latin America/India: FM 87.5-108 MHz (50/100kHz)
- Signal-to-noise ratio: FM 55 dB
- Frequency response: FM 60 Hz-12.5 kHz /  $\pm 3$ dB

## USB

- Compatibility: Hi-Speed USB (2.0)
- Class support: UMS (USB Mass Storage Class)
- File system: NTFS, FAT16, FAT32
- Maximum memory support: < 160GB

## Main Unit

- Power supply:
  - Europe/China: 220-240V,  $\sim 50$  Hz;
  - Latin America/Asia Pacific: 110-127V/220-240V,  $\sim 50-60$ Hz;
  - Russia/India: 220-240V,  $\sim 50$ Hz
- Power consumption: 125 W
- Standby power consumption:  $\leq 0.22$  W
- Dimensions (WxHxD): 437 x 75 x 342 (mm)
- Weight: 4.5 kg

### Subwoofer

- Impedance: 4 ohm
- Speaker drivers: 165 mm (6.5") woofer
- Frequency response: 20 Hz-150 Hz
- Dimensions (WxHxD): 196 x 397 x 342 (mm)
- Weight: 6.4 kg
- Cable length: 3 m

### Speakers

- System: full range satellite
- Speaker impedance: 4 ohm (center), 6 ohm (Front/Rear)
- Speaker drivers:
  - Center: 2 x 2.5" woofer + 1" soft-dome tweeter
  - Front/Rear: 2 x 2.5" full range + 2.5" woofer + 1" soft-dome tweeter
- Frequency response: 150 Hz-20 kHz
- Dimensions (WxHxD):
  - Center: 435 x 85 x 111 (mm)
  - Front/Rear : 99 x 247 x 117 (mm)
- Weight:
  - Center: 1.67 kg
  - Front/Rear : 1.17 kg/each

### Laser Specification

- Laser Type (Diode): InGaN/AlGaIn (BD), AlGaInP (DVD/CD)
- Wave length: 405 +5nm/-5nm (BD), 655 +5nm/-10nm (DVD), 790 +10nm/-10nm (CD)
- Output power (Max. ratings): 20mW (BD), 6mW (DVD), 7mW (CD)

## 8 Troubleshooting



### Warning

- Risk of electric shock. Never remove the casing of the product.

To keep the warranty valid, never try to repair the product yourself.

If you have problems using this product, check the following points before you request service. If you still have a problem, register your product and get support at [www.philips.com/welcome](http://www.philips.com/welcome).

If you contact Philips, you will be asked for the model and serial number of your product. The model number and serial number are on the back or bottom of your product. Write the numbers here:

Model No. \_\_\_\_\_

Serial No. \_\_\_\_\_

## Main unit

**The buttons on this home theater do not work.**

- Disconnect the home theater from the power outlet for a few minutes, then reconnect.

## Picture

**No picture.**

- Ensure that the TV is switched to the correct source for the home theater.

**No picture on HDMI connection.**

- Change the HDMI video setting or wait for 15 seconds for auto recover.
- Check if the HDMI cable is faulty. Replace with a new HDMI cable.

**No picture on the Component (Y Pb Pr) connection.**

- If the HDMI video connection is set to **[Auto]** or **[1080p/24Hz]**, there is no video output through the component connection. Change the HDMI video setting or remove the HDMI connection.

**No high-definition video signal on the TV.**

- Ensure that the disc contains high-definition video.
- Ensure that the TV supports high-definition video.

---

## Sound

### No sound.

- Ensure that the audio cables are connected and select the correct input source (for example, **SOURCE / AUDIO SOURCE**) for the device you want to play.

### No sound on HDMI connection.

- You might not hear any sound if the connected device is not HDCP (High-bandwidth Digital Content Protection) compliant or only DVI compatible. Use an analog or digital audio connection.
- Ensure that the **[HDMI Audio]** is enabled.

### No sound from TV program.

- Connect an audio cable from the audio input on the home theater to the audio output on the TV, then press **SOURCE / AUDIO SOURCE** repeatedly to select the correct audio source.

### Distorted sound or echo.

- Ensure that the TV volume is muted or set to minimum if you are playing audio through the home theater.

### Audio and video are not synchronized.

- 1) Press **SOUND SETTINGS /** (Sound options) . 2) Press the **Navigation buttons** (left/right) repeatedly until **AUDIO SYNC** is displayed, then press **OK**. 3) Press the **Navigation buttons** (up/down) to sync the audio with the video.

---

## Play

### Disc cannot be played.

- Clean the disc.
- Ensure that the home theater supports the disc (see 'Product specifications' on page 24).
- Ensure that the home theater supports the region code of the disc.
- For DVD±RW or DVD±R, ensure that the disc is finalized.

### DivX video files cannot be played.

- Ensure that the DivX file is encoded according to the 'Home Theater Profile' with the DivX encoder.
- Ensure that the DivX video file is complete.

### DivX subtitles do not display correctly.

- Ensure that the subtitle file name is the same as the movie file name.
- Select the correct character set: 1) Press **≡OPTIONS /** (Options). 2) Select **[Character Set]**. 3) Select the supported character set. 4) Press **OK**.

### The contents of a USB storage device cannot be read.

- Ensure that the format of the USB storage device is compatible with the home theater (see 'Product specifications' on page 24).
- Ensure that the USB storage device is formatted with a file system that is supported by the home theater.

### 'No entry' or 'x' sign appears on the TV.

- The operation is not possible.

### EasyLink feature does not work.

- Ensure that the home theater is connected to a Philips brand EasyLink TV and that EasyLink is on.

### I do not want my home theater to be switched on when I switch on my TV.

- This is the correct behavior for Philips EasyLink (HDMI-CEC). To make the home theater work independently, switch off EasyLink.

### I cannot access BD-Live features.

- Check the network connection (see 'Connect to a computer network and the Internet' on page 10) or ensure that the network has been set up (see 'Set up network' on page 10).
- Clear memory storage. (see 'Change advanced settings' on page 21)
- Ensure that the Blu-ray disc supports BD-Live feature.

### The video (movies, photos, video clips, etc.) contents of the iPod/iPhone do not display on TV.

- Video and photo browsing is not supported, you can only browse the video and photo contents on the iPod/iPhone itself.

### Cannot see pictures from my iPod/iPhone on the TV.

- Connect a yellow composite cable from the dock to the TV.
- Switch the TV to the **AV/VIDEO** source (corresponding to the yellow composite cable).
- Press **PLAY** on the iPod or iPhone to start the slideshow.

The audio is interrupted when I play music from my iPod or iPhone in the docking station.

- Ensure that you have installed the latest firmware on your iPod or iPhone. For more information, refer to the support website of your iPod or iPhone.

**My 3D video plays in 2D mode.**

- Ensure that your home theater is connected to your 3D TV through HDMI.
- Ensure that your disc is a Blu-ray 3D disc.
- Ensure that the **[Blu-ray 3D video]** setting is turned on (see 'Change video settings' on page 19).

**I see black video on my TV screen.**

- Ensure that your home theater is connected to the TV through HDMI.
- Switch to the correct HDMI source on your TV.

## Network

**Wireless network not found or distorted.**

- Ensure that the wireless network is not disturbed by the microwave ovens, dect phones or other Wi-Fi devices in your neighbourhood.
- Try the wired network installation if the wireless network does not work properly (see 'Set up network' on page 999).

## 9 Index

### 3

3D video	14
----------	----

### A

amplifier	24
audio	
connection	9
language	21
synchronize with video	13
audio input mapping	18, 20

### B

BD-Live	
access	14
set up	10
Bonus View	13
Browse	
Net TV	17
PC	17

### C

care	2
change settings	19
chapter	15
connect	
audio from TV	9, 18
guide	7
network	10
other devices	9
TV	8
wireless module	11
connectors	7
contact us	25

### D

disc	
play	13
supported discs	24
disposal of your product	3
DivX	
character set	15
DLNA	16

### E

EasyLink	
settings	18, 20

---

<b>F</b>	
file formats	24

---

<b>H</b>	
HDMI CEC (see Easylink)	18

---

<b>I</b>	
<b>Internet</b>	
BD-Live	14
connect	10
software update	22
<b>iPod</b>	
play	18
slideshow	18

---

<b>L</b>	
<b>language</b>	
audio	15, 21
disc menu	21
on-screen display	21
subtitle	15, 21

---

<b>M</b>	
media server software	
set up	16
<b>MP3</b>	
play	18

---

<b>N</b>	
Net TV	17
<b>network</b>	
connect	10
set up	10
software update	22

---

<b>O</b>	
one-touch play	18, 20
one-touch standby	18, 20
<b>overview</b>	
connectors	7
main unit	4
remote control	4

---



---

<b>P</b>	
password (PIN code)	21
<b>picture</b>	
options	15
rotate	15
slide show	16, 15
troubleshooting	25
<b>picture-in-picture</b>	
2nd audio language	13
2nd subtitle language	13
enable	13
<b>play</b>	
2D video	14
3D video	14
disc	13
from PC	16
MP3 player	18
multimedia content	16
options	13
radio	17
troubleshooting	26
USB storage device	14
<b>product care</b>	2
<b>product specifications</b>	24

---

<b>R</b>	
<b>radio</b>	
play	17
program	17
tune	17
<b>recycle</b>	3
<b>region code</b>	24
<b>remote control</b>	4
<b>repeat</b>	15, 13
<b>rotate pictures</b>	15

---

<b>S</b>	
<b>safety</b>	2
<b>settings</b>	
EasyLink	20
network	20
parental control	21
preferences	21
<b>slideshow</b>	
animation	15
duration	15
play from iPod/iPhone	18
play musical slideshow	16
<b>software</b>	
update	22
version	22

---

<b>sound</b>	
auto volume	12
mode	12
surround	12
treble and bass	13
troubleshooting	26
<b>subtitle</b>	
language	15, 21
<b>subtitle shift</b>	15, 21
<b>system audio control</b>	18

---

## T

<b>time search video</b>	15
<b>title</b>	15
<b>troubleshooting</b>	25
<b>TV</b>	
audio from TV	9, 18
connect	8

---

## U

<b>USB</b>	
play	14
software update	23

---

## V

<b>video</b>	
options	15
synchronize with audio	13

---

## W

<b>wireless</b>	
wireless module	11

# Language Code

Abkhazian	6566	Inupiaq	7375	Pushto	8083
Afar	6565	Irish	7165	Russian	8285
Afrikaans	6570	Íslenska	7383	Quechua	8185
Amharic	6577	Italiano	7384	Raeto-Romance	8277
Arabic	6582	Ivrit	7269	Romanian	8279
Armenian	7289	Japanese	7465	Rundi	8278
Assamese	6583	Javanese	7486	Samoan	8377
Avestan	6569	Kalaallisut	7576	Sango	8371
Aymara	6589	Kannada	7578	Sanskrit	8365
Azerhaijani	6590	Kashmiri	7583	Sardinian	8367
Bahasa Melayu	7783	Kazakh	7575	Serbian	8382
Bashkir	6665	Kernewek	7587	Shona	8378
Belarusian	6669	Khmer	7577	Shqip	8381
Bengali	6678	Kinyarwanda	8287	Sindhi	8368
Bihari	6672	Kirghiz	7589	Sinhalese	8373
Bislama	6673	Komi	7586	Slovensky	8373
Bokmål, Norwegian	7866	Korean	7579	Slovenian	8376
Bosanski	6683	Kuanyama; Kwanyama	7574	Somali	8379
Brezhoneg	6682	Kurdish	7585	Sotho; Southern	8384
Bulgarian	6671	Lao	7679	South Ndebele	7882
Burmese	7789	Latina	7665	Sundanese	8385
Castellano, Español	6983	Latvian	7686	Suomi	7073
Catalán	6765	Letzeburgesch;	7666	Swahili	8387
Chamorro	6772	Limburgan; Limburger	7673	Swati	8383
Chechen	6769	Lingala	7678	Svenska	8386
Chewa; Chichewa; Nyanja	7889	Lithuanian	7684	Tagalog	8476
中文	9072	Luxembourgish;	7666	Tahitian	8489
Chuang; Zhuang	9065	Macedonian	7775	Tajik	8471
Church Slav; Slavonic	6785	Malagasy	7771	Tamil	8465
Chuvash	6786	Magyar	7285	Tatar	8484
Corsican	6779	Malayalam	7776	Telugu	8469
Česky	6783	Maltese	7784	Thai	8472
Dansk	6865	Manx	7186	Tibetan	6679
Deutsch	6869	Maori	7773	Tigrinya	8473
Dzongkha	6890	Marathi	7782	Tonga (Tonga Islands)	8479
English	6978	Marshallese	7772	Tsonga	8483
Esperanto	6979	Moldavian	7779	Tswana	8478
Estonian	6984	Mongolian	7778	Türkçe	8482
Euskara	6985	Nauru	7865	Turkmen	8475
Ελληνικά	6976	Navaho; Navajo	7886	Twi	8487
Faroese	7079	Ndebele, North	7868	Uighur	8571
Français	7082	Ndebele, South	7882	Ukrainian	8575
Frysk	7089	Ndonga	7871	Urdu	8582
Fijian	7074	Nederlands	7876	Uzbek	8590
Gaelic; Scottish Gaelic	7168	Nepali	7869	Vietnamese	8673
Gallegan	7176	Norsk	7879	Volapuk	8679
Georgian	7565	Northern Sami	8369	Walloon	8765
Gikuyu; Kikuyu	7573	North Ndebele	7868	Welsh	6789
Guarani	7178	Norwegian Nynorsk;	7878	Wolof	8779
Gujarati	7185	Occitan; Provençal	7967	Xhosa	8872
Hausa	7265	Old Bulgarian; Old Slavonic	6785	Yiddish	8973
Herero	7290	Oriya	7982	Yoruba	8979
Hindi	7273	Oromo	7977	Zulu	9085
Hiri Motu	7279	Ossetian; Ossetic	7983		
Hrwatski	6779	Pali	8073		
Ido	7379	Panjabi	8065		
Interlingua (International)	7365	Persian	7065		
Interlingue	7365	Polski	8076		
Inuktitut	7385	Português	8084		



