

**PHILIPS**

5000 series

5.1影院扬声器  
CSS5530G

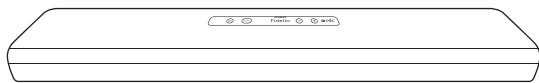
# 快速操作指南



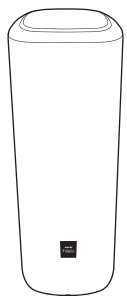
在以下网站上注册产品并获得支持  
[www.philips.com/support](http://www.philips.com/support)



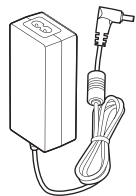
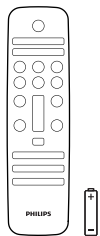
在重低音音箱上也有此二维码



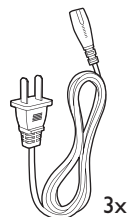
无线盒



4x

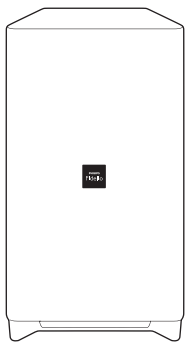


电源适配器



3x

电源线

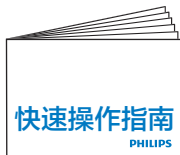


8x



4x

挂架



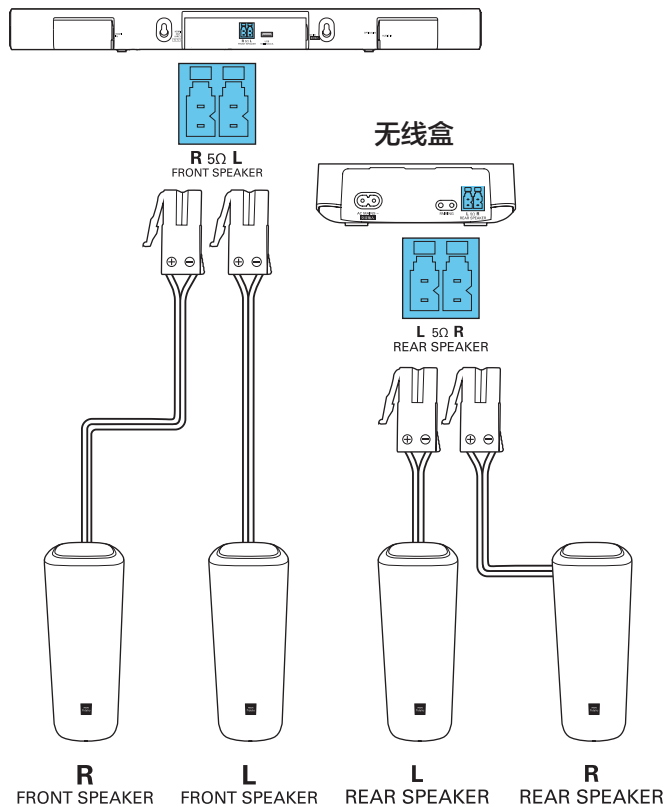
快速操作指南

PHILIPS

# 1

ZH-CN 连接本产品

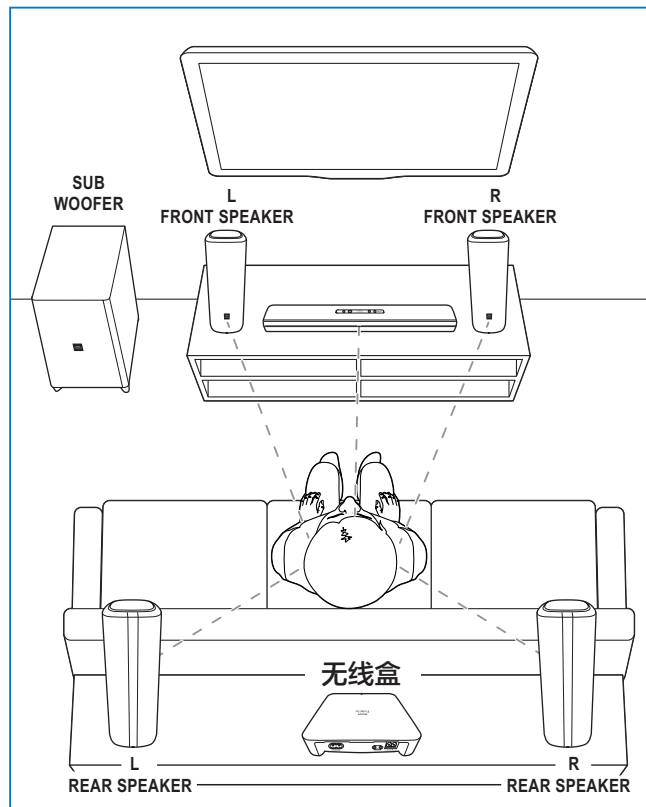
EN Connect your product



# 2

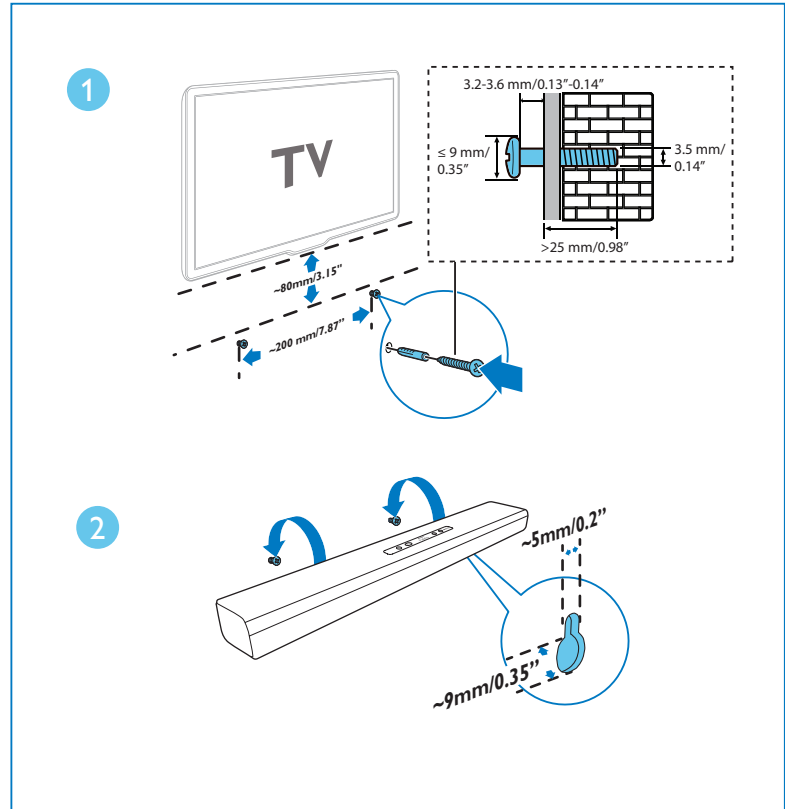
ZH-CN 摆置本产品

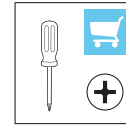
EN Position your product



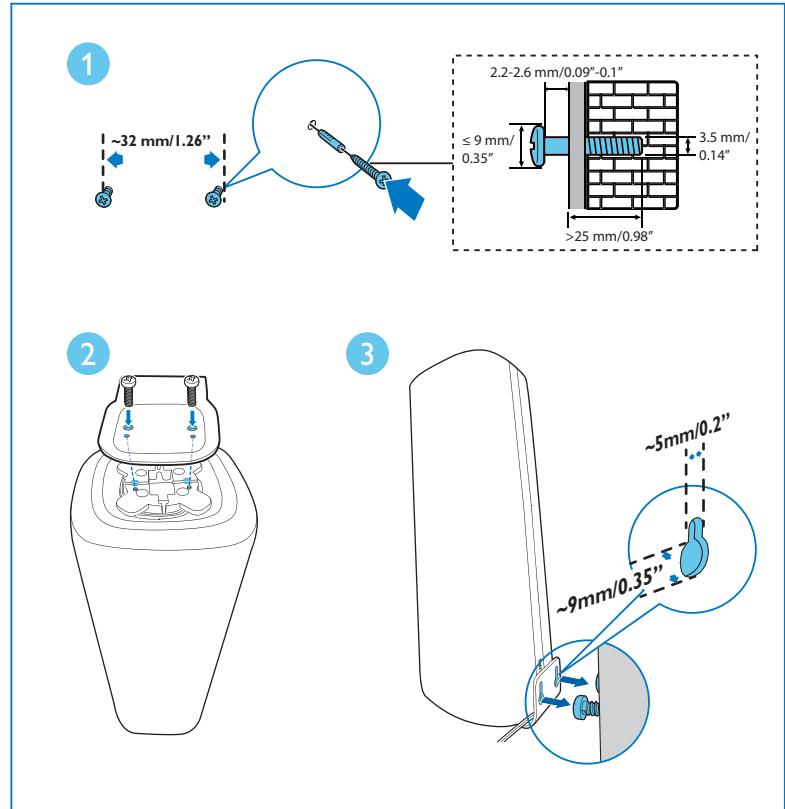


**ZH-CN** 将主装置挂置墙上（自选）  
**EN** Wall mount the main unit  
(optional)



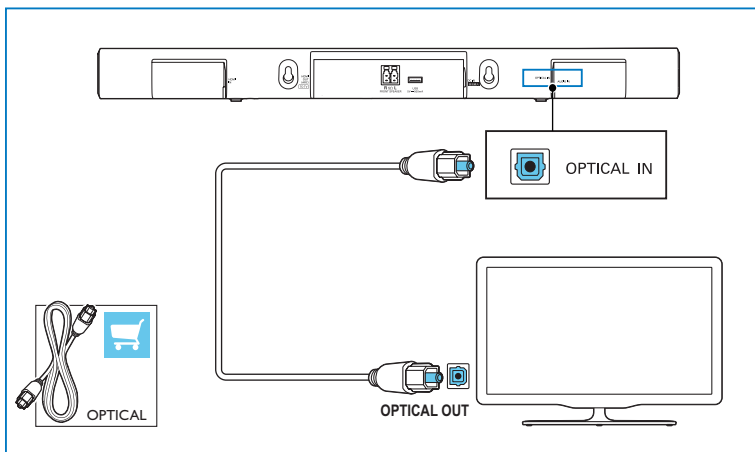
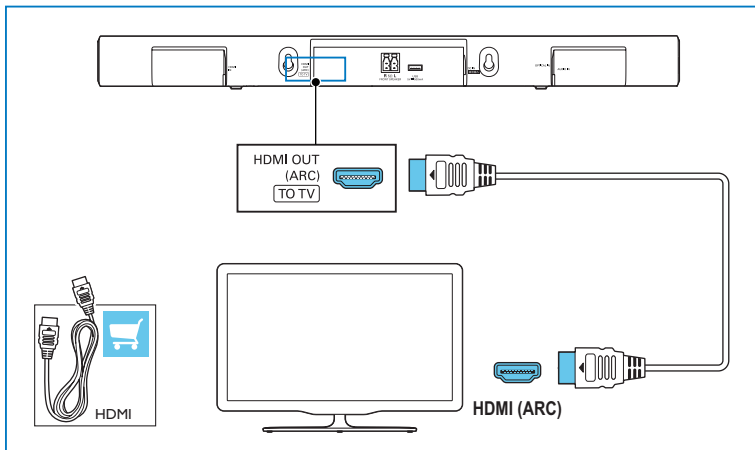


**ZH-CN** 将扬声器挂置墙上 (自选)  
**EN** Wall mount the speakers (optional)



# 3

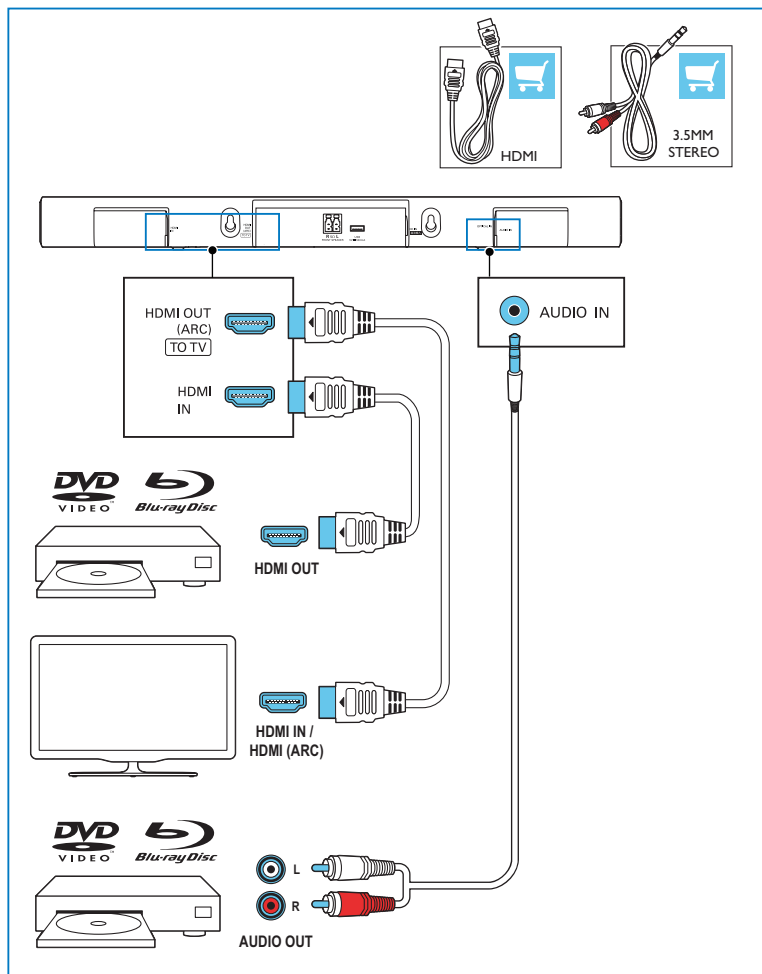
**ZH-CN** 通过以下一种连接方式收听来自电视的声音  
**EN** Hear audio from TV in one of the following ways



# 4

**ZH-CN** 通过本产品连接其它音视频设备

**EN** Enjoy audio and video from your devices

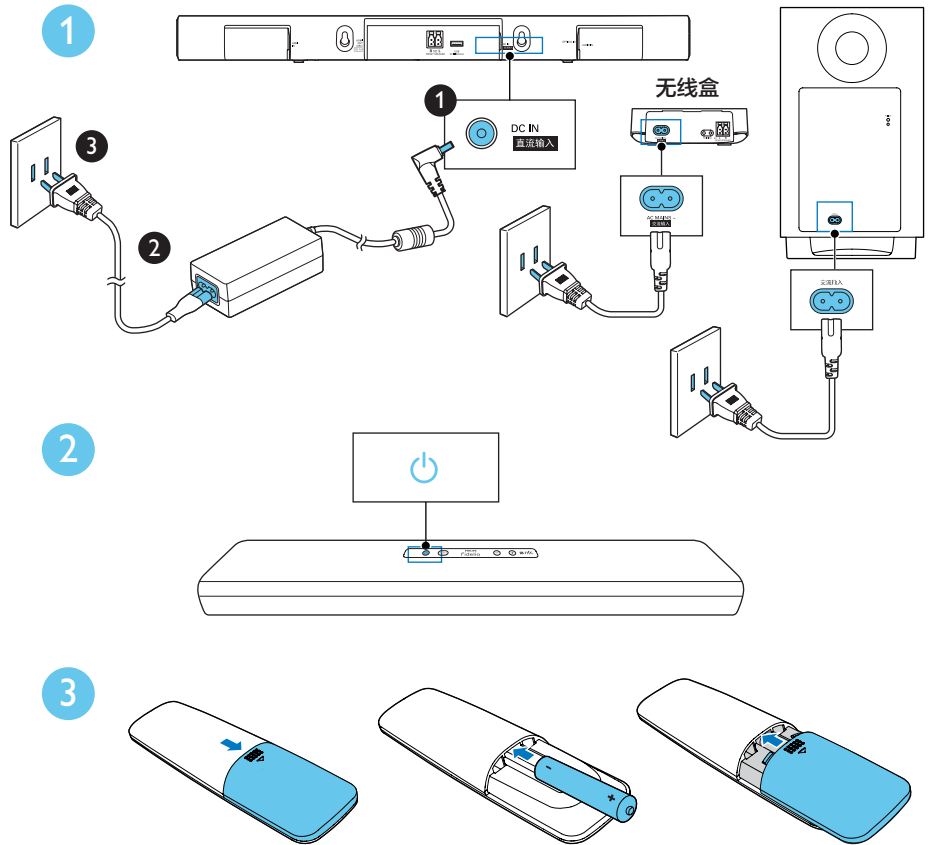




# 5

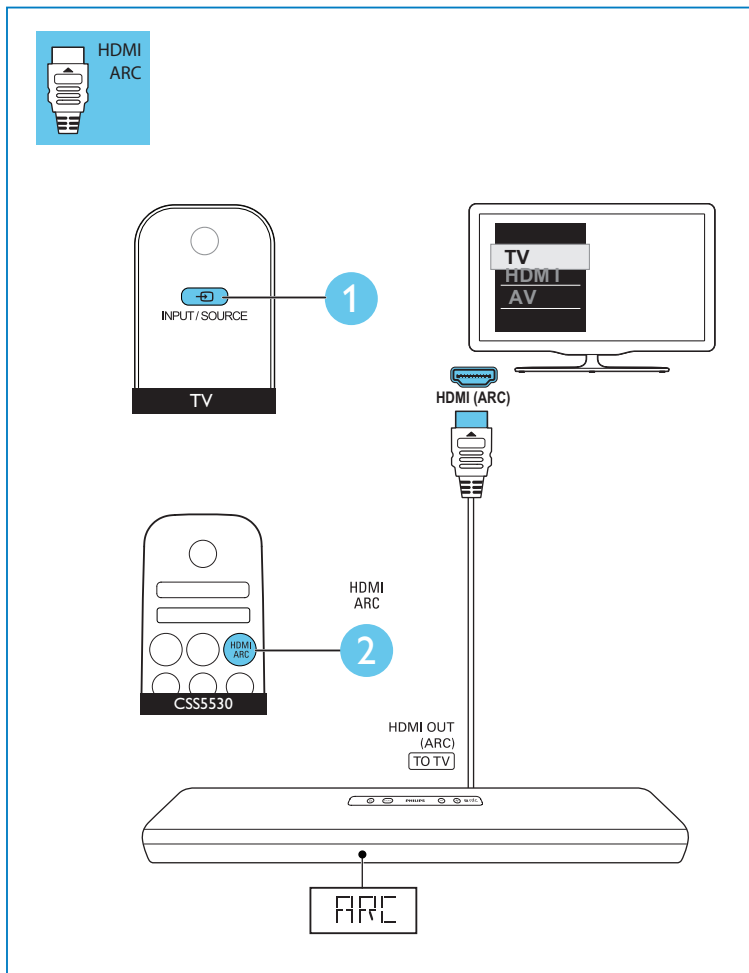
ZH-CN 开启本产品

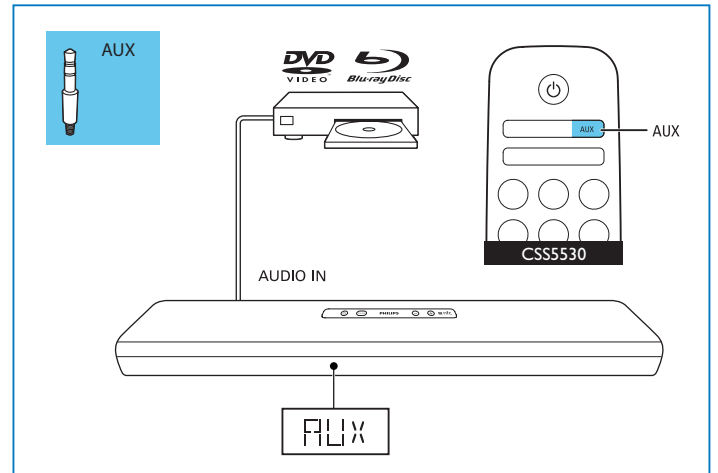
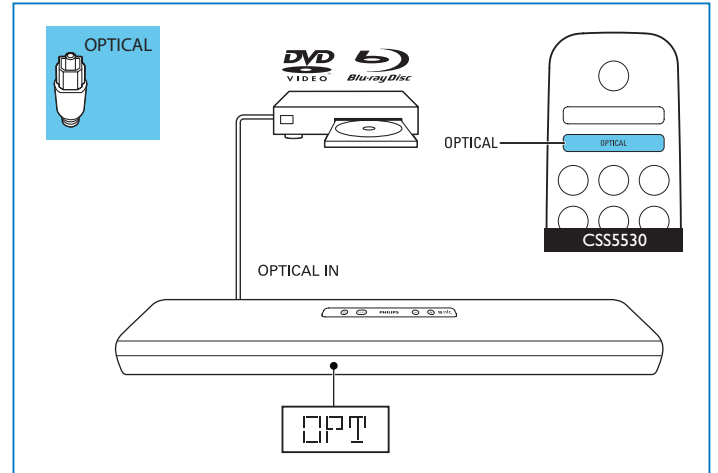
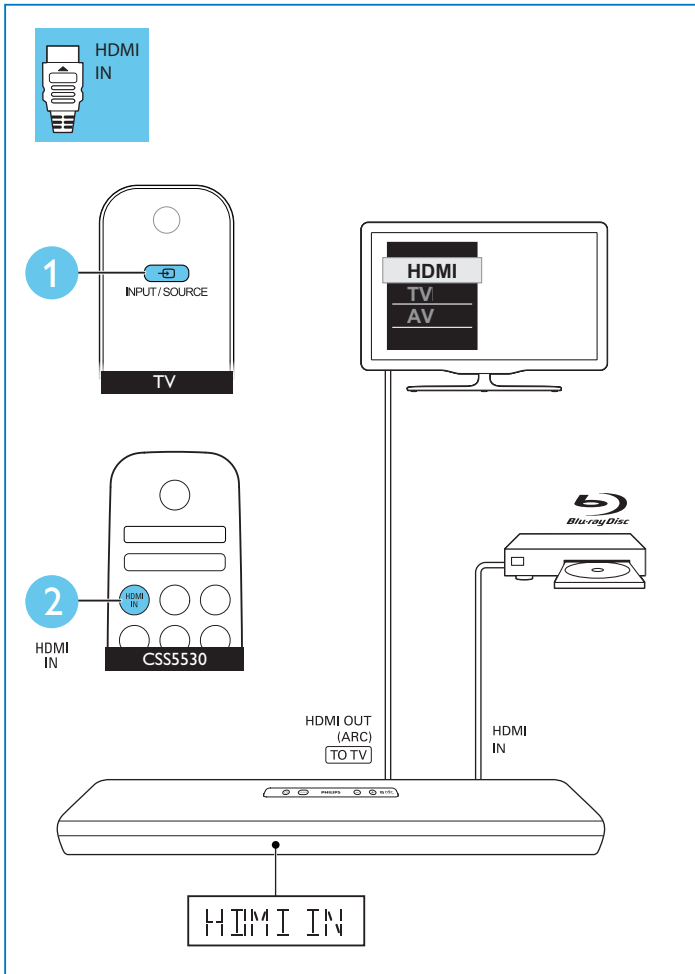
EN Switch on your product



# 6

**ZH-CN** 选择正确的音频输入源  
**EN** Select the correct audio source

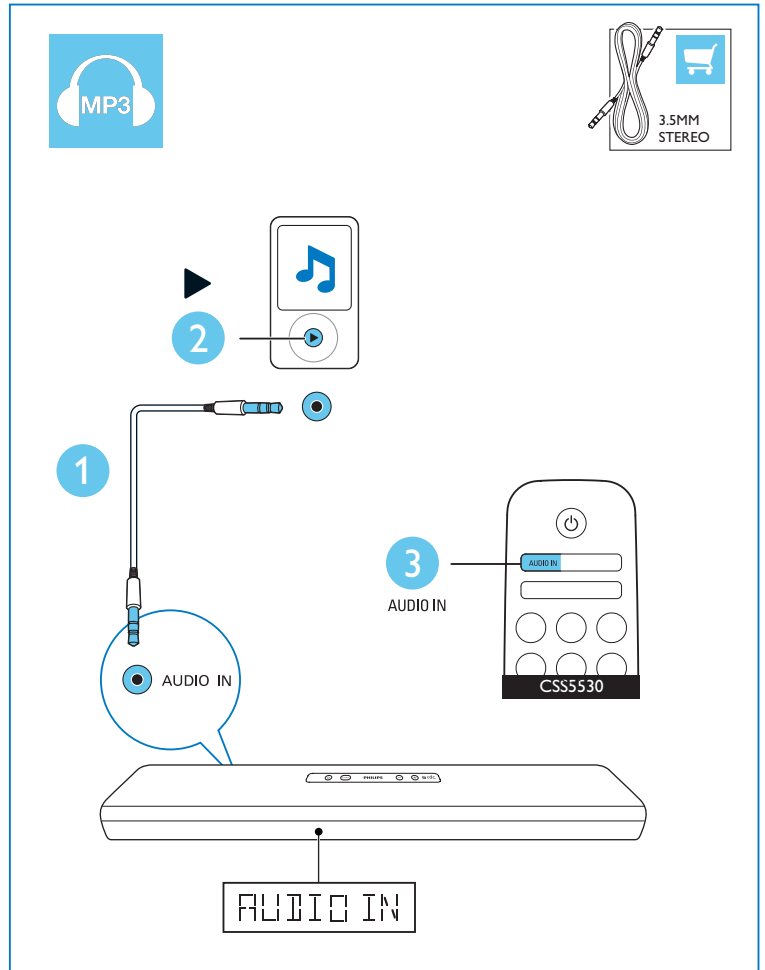




# 7

ZH-CN 播放其它设备

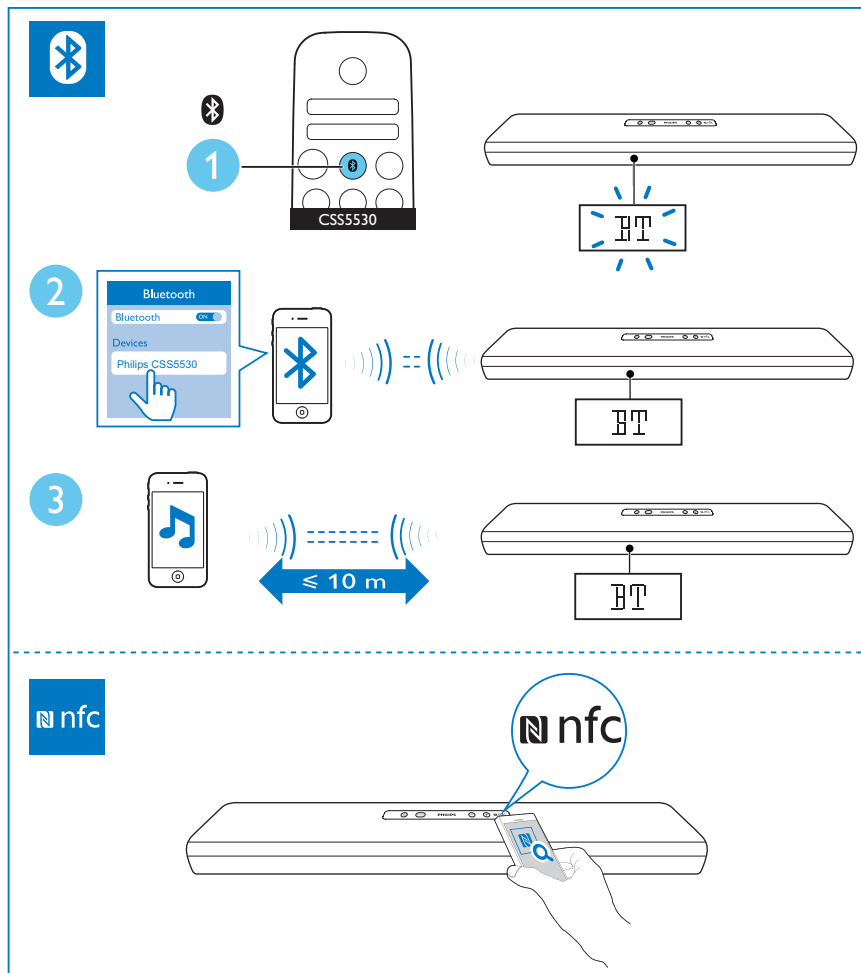
EN Play other devices



# 8

**ZH-CN** 通过蓝牙播放音频或通过 NFC 连接蓝牙

**EN** Play audio through Bluetooth or connect Bluetooth via NFC





**ZH-CN** 访问 [www.philips.com/support](http://www.philips.com/support)  
更详尽地了解本产品

**EN**

For more information about  
using this product, visit  
[www.philips.com/support](http://www.philips.com/support)



[www.philips.com/support](http://www.philips.com/support)



Manufactured under license from Dolby Laboratories.  
Dolby, Pro Logic, and the double-D symbol are  
trademarks of Dolby Laboratories.



The terms HDMI and HDMI High-Definition Multimedia  
Interface, and the HDMI Logo are trademarks or  
registered trademarks of HDMI Licensing LLC in the  
United States and other countries.



The Bluetooth® word mark and logos are registered  
trademarks owned by Bluetooth SIG, Inc. and any  
use of such marks by Gibson is under license. Other  
trademarks and trade names are those of their  
respective owners.



The N Mark is a trademark or registered trademark  
of NFC Forum, Inc. in the United States and in other  
countries.

## 产品中有害物质的名称及含量 Names and Contents of Hazardous Substances

部件名称 Name of the parts	有害物质 Hazardous Substance					
	铅 (Pb)	汞 (Hg)	镉 (Cd)	六价铬 (Cr (VI))	多溴联苯 (PBB)	多溴二苯醚 (PBDE)
Housing 外壳	○	○	○	○	○	○
Subwoofer 超重低音箱	×	○	○	○	○	○
Loudspeakers 喇叭单元	○	○	○	○	○	○
PWBs 电路板组件	×	○	○	○	○	○
Accessories (Remote control & cables 附件 (遥控器, 电源线, 连接线)	×	○	○	○	○	○
Batteries in Remote Control (ZnC) 遥控器电池	×	○	○	○	○	○

本表格依据 SJ/T 11364 的规定编制。

The table is formulated according to SJ/T 11364.

O: 表示该有害物质在该部件所有均质材料中的含量均在 GB/T 26572 规定的限量要求以下。

○: Indicates that this hazardous substance contained in all of the homogeneous materials for this part is below the limit requirement in GB/T 26572.

x: 表示该有害物质至少在该部件的某一均质材料中的含量超出 GB/T 26572 规定的限量要求。

×: Indicates that this hazardous substance contained in at least one of the homogeneous materials used for this part is above the limit requirement in GB/T 26572.



### 环保使用期限 Environmental Protection Use Period

此标识指期限（十年），电子电气产品中的有害物质在正常使用的条件下不会发生外泄或突变，用户使用该电子电气产品不会对环境造成严重污染或对其人身、财产造成严重损害的期限。

This logo refers to the period (10 years) during which the hazardous substances in electronic and electrical products will not leak or mutate so that the use of these [substances] will not result in any severe environmental pollution, any bodily injury or damage to any assets.



Specifications are subject to change without notice

This product has been manufactured by, and is sold under the responsibility of WOOX Innovations (Shanghai) Commercial Company Ltd., and WOOX Innovations (Shanghai) Commercial Company Ltd., is the warrantor in relation to this product.

Philips and the Philips Shield Emblem are registered trademarks of Koninklijke Philips N.V. and are used under license.

CSS5530G\_93\_QSG\_V1.0

