

Register your product and get support at
www.philips.com/welcome

Immersive
5000 series



Quick start guide

PHILIPS

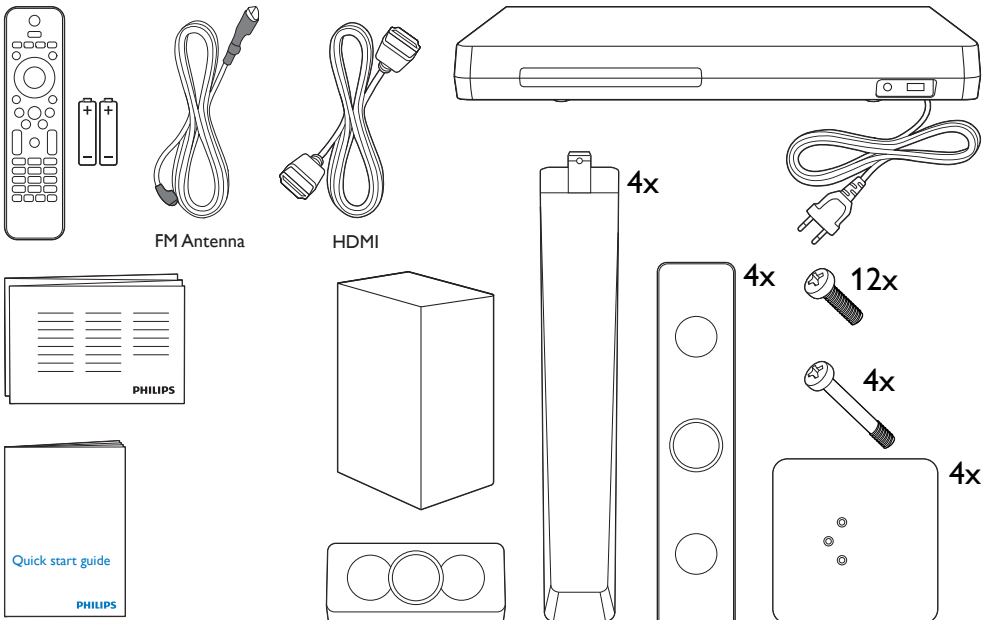


EN Before using your product, read all accompanying safety information

MS Sebelum menggunakan produk anda, baca semua maklumat keselamatan yang disertakan

ZH 使用产品前，请阅读所有随附的安全信息
CN

ZH 使用您的產品前，請先閱讀所有附隨的安全資訊
TW



1

EN Stand mount the speakers

MS Dirikan dirian pembesar suara

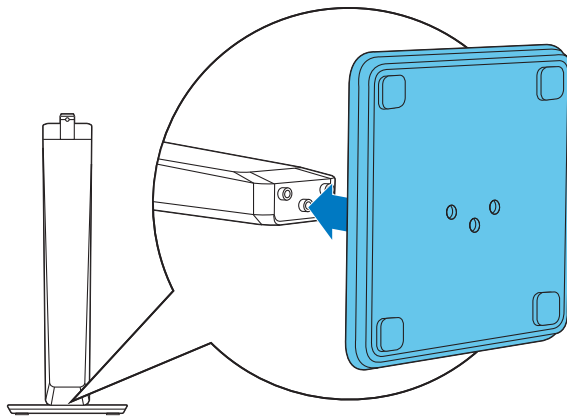
ZH 桌架和扬声器

CN

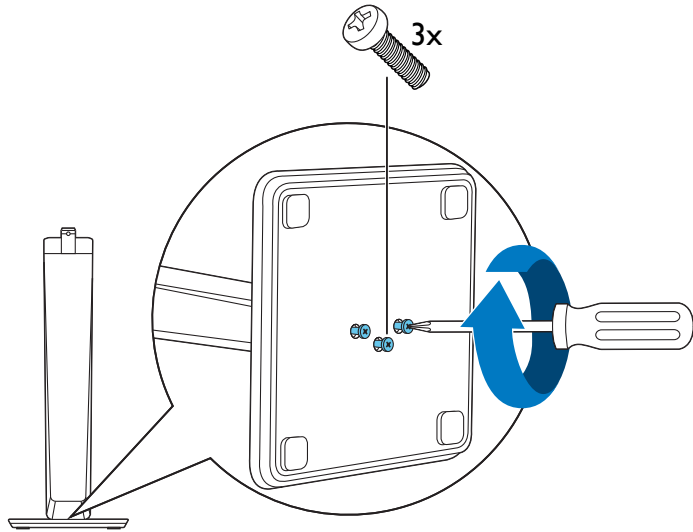
ZH 将喇叭安装到立架上

TW

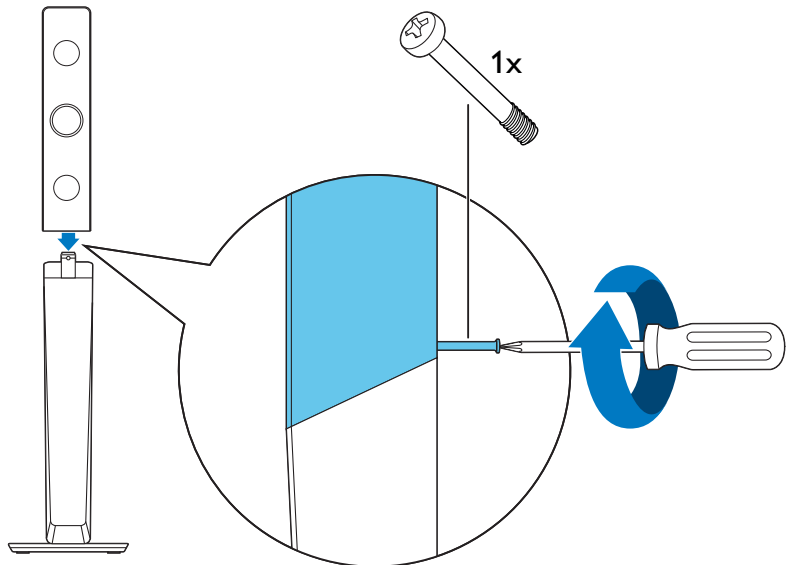
1



2



3



2

EN Connect the home theater

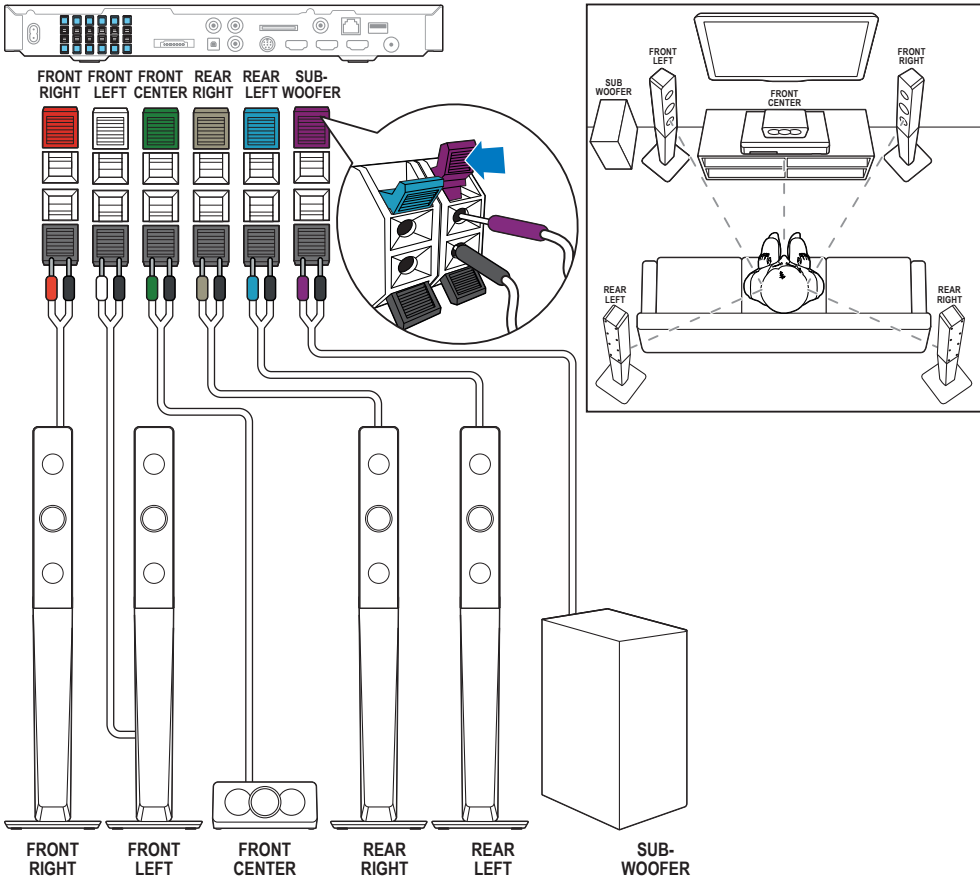
MS Sambungkan teater rumah

ZH 连接家庭影院

CN

ZH 連線至家庭劇院

TW



3

EN Connect to TV in one of these ways

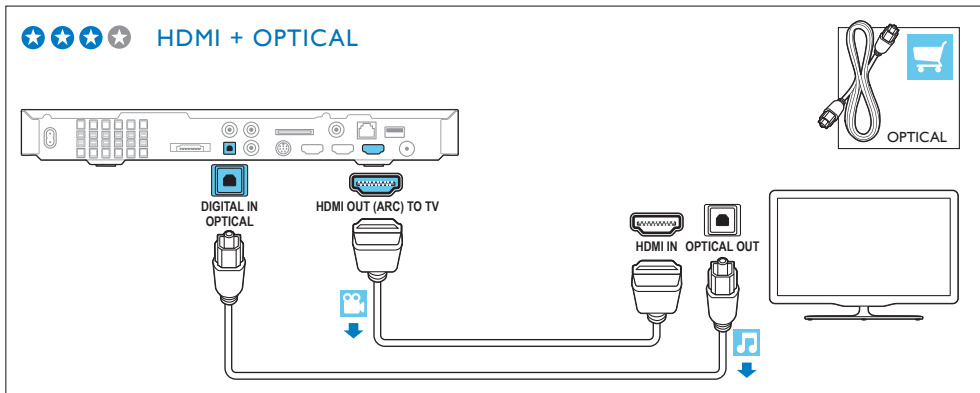
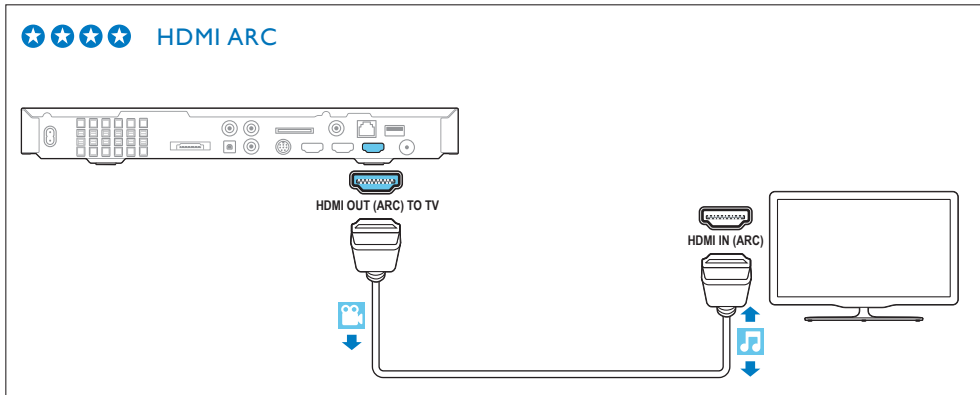
MS Sambung kepada TV dalam salah satu cara berikut

ZH 通过这些方式连接至电视

CN

ZH 用這些方式之一連線到電視

TW



★ ★ ★ ★ HDMI + COAXIAL



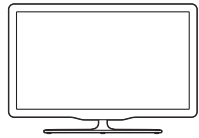
DIGITAL IN
COAXIAL

HDMI OUT (ARC) TO TV



HDMI IN

COAXIAL OUT

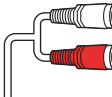


★ ★ ★ ★ HDMI + AUDIO L/R



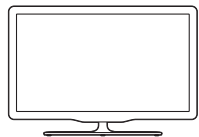
L
R
AUDIO IN

HDMI OUT (ARC) TO TV



HDMI IN

L
R
AUDIO OUT



4

EN Switch on the home theater

MS Hidupkan teater rumah

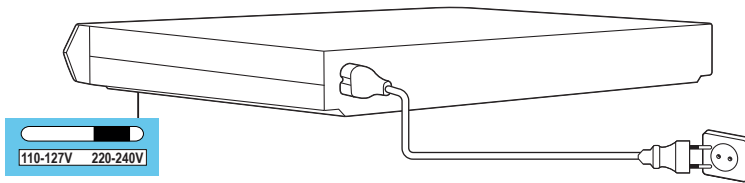
ZH 打开家庭影院

CN

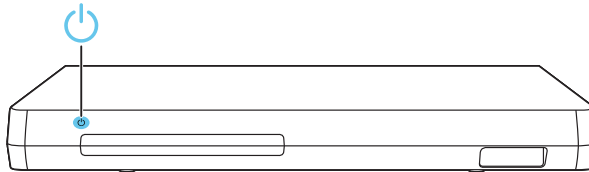
ZH 開啟家庭劇院

TW

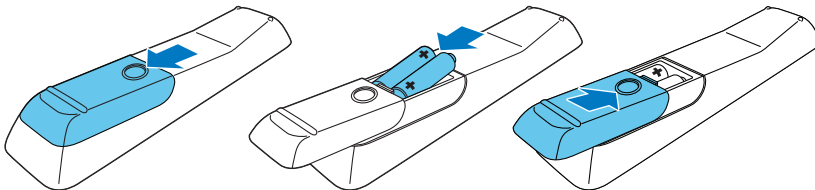
1



2



3



5

EN Complete the first time setup

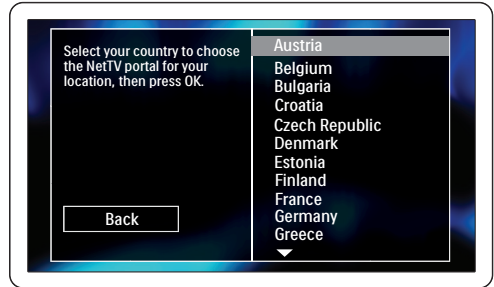
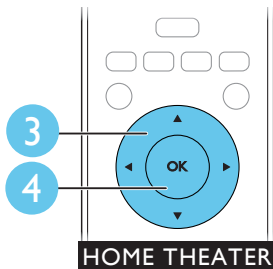
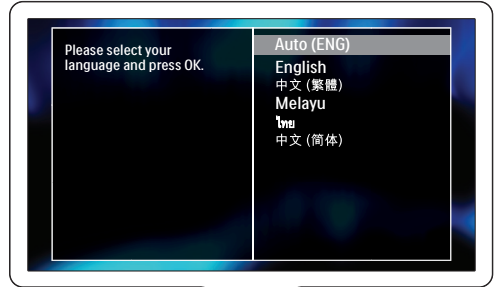
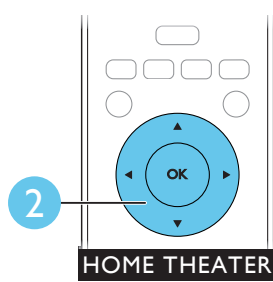
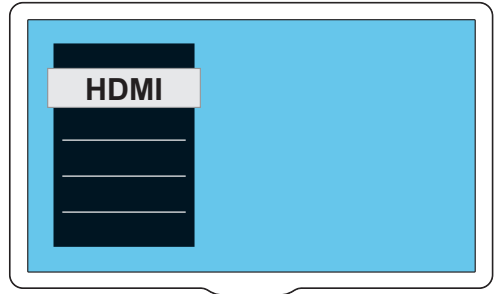
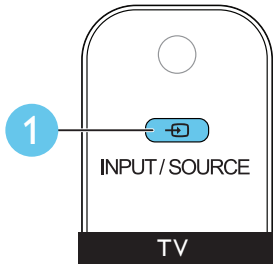
MS Lengkapi persediaan kali pertama

ZH 完成首次设置

CN

ZH 完成首次設定

TW



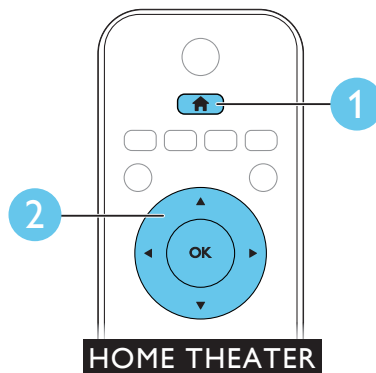
6

EN Need help with your product? Select Help to access the onscreen user manual

MS Perlukan bantuan dalam pengendalian produk anda? Klik Bantuan untuk mengakses manual pengguna atas skrin

ZH 需要有关产品的帮助吗? 选择
CN 帮助以访问屏上用户手册

ZH 需要產品協助? 請按一下「說明」存取線上使用者
TW 手冊



7

EN Use your home theater

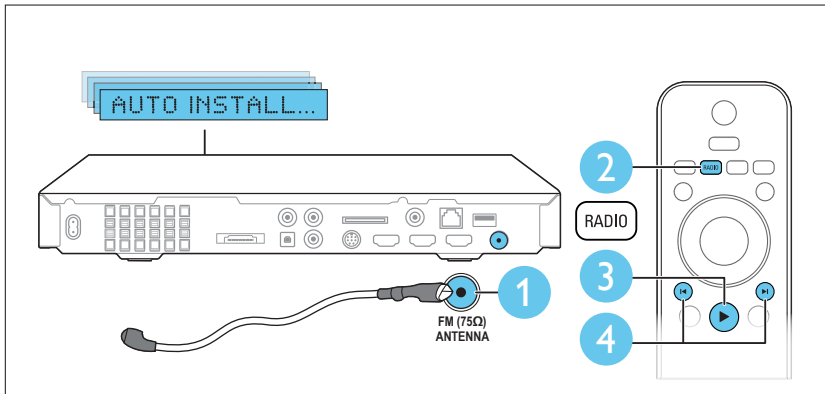
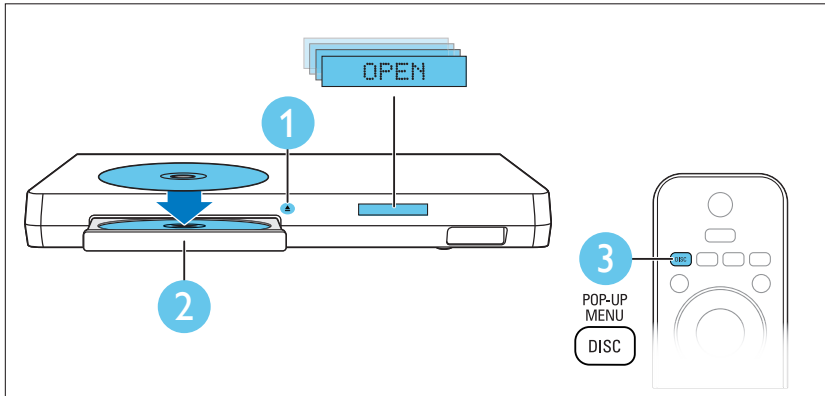
MS Gunakan teater rumah anda

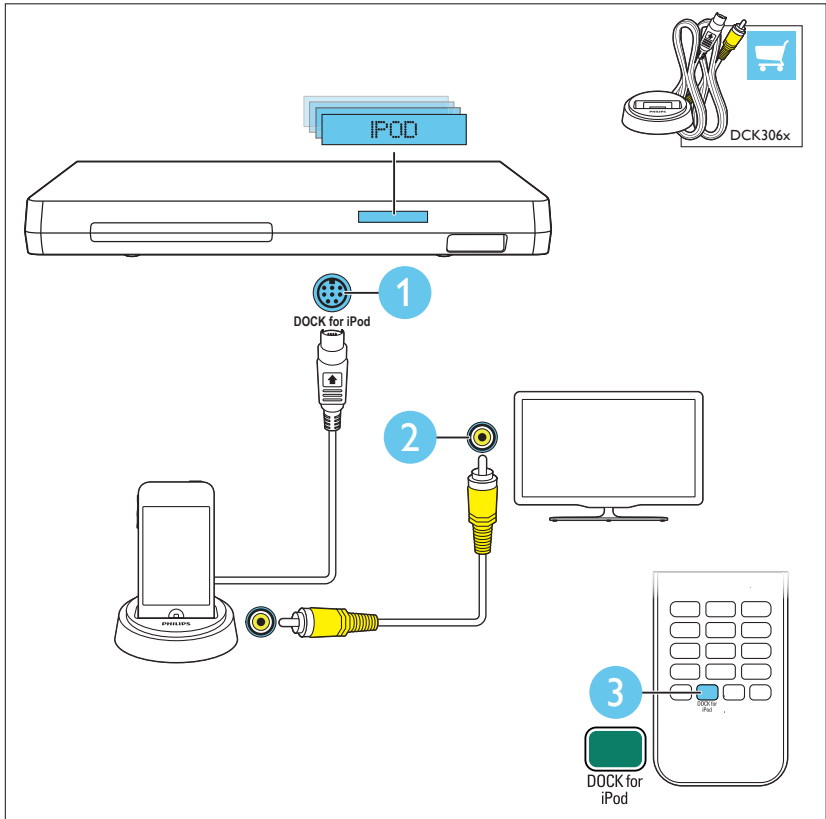
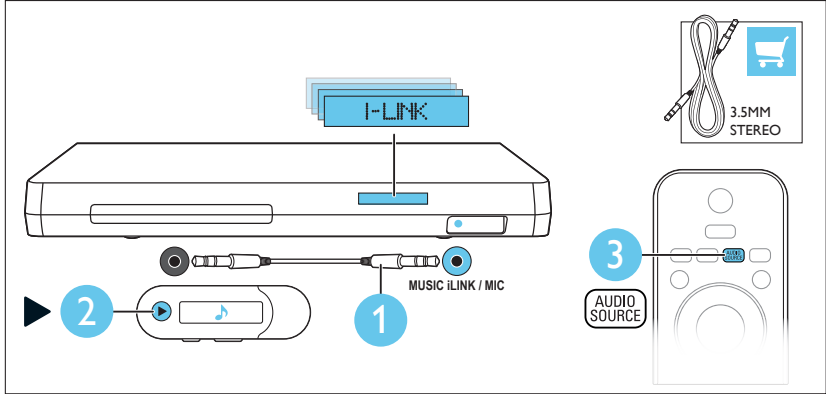
ZH 使用家庭影院

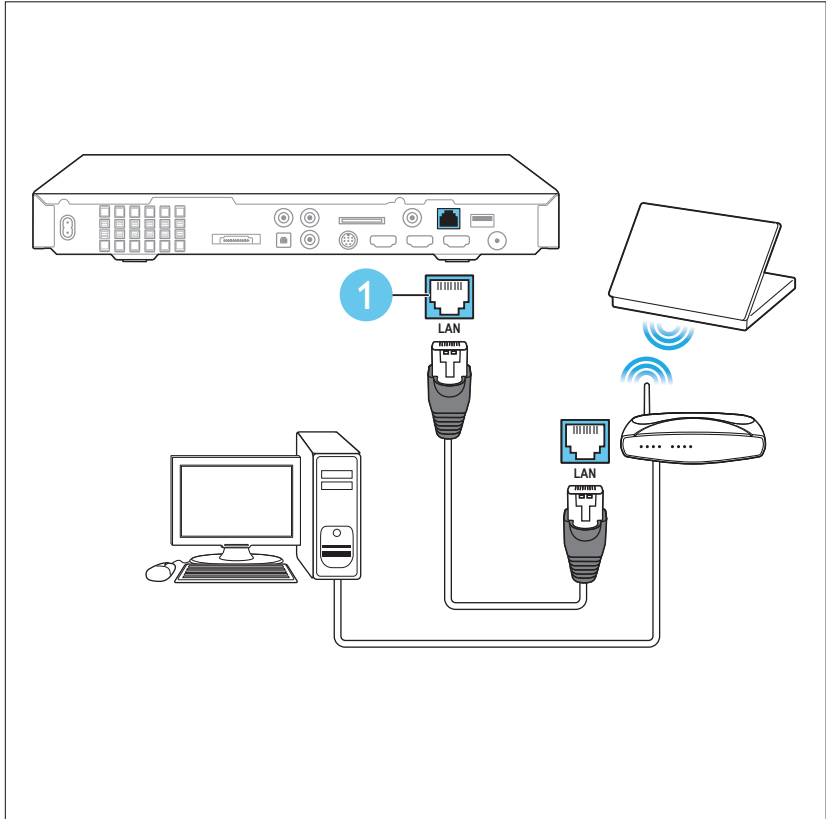
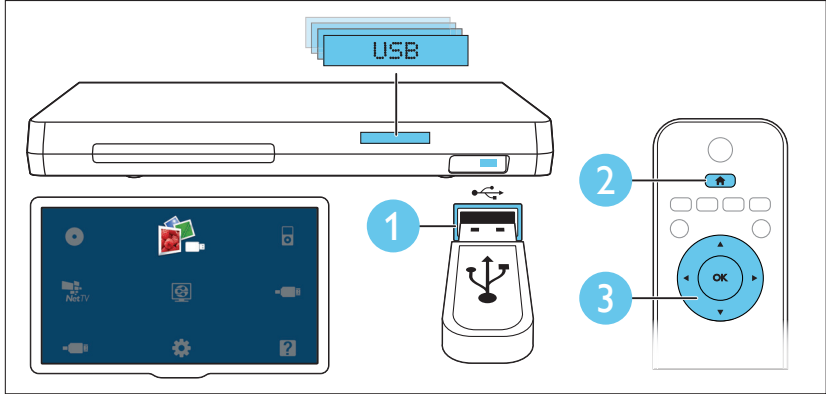
CN

ZH 使用您的家庭劇院

TW









EN For sustainability, the user manual is not printed and available in your product as onscreen help. A printable user manual as well as product updates is available from www.philips.com/support.

MS Untuk keamanan alam, manual pengguna tidak dicetak dan tersedia dalam produk anda sebagai bantuan atas skrin. Manual pengguna yang boleh dicetak dan juga kemas kinian produk tersedia daripada www.philips.com/support.

ZH 为实现可持续发展，未随附打印版的用户手册，用户可以从屏幕帮助中进行查看。有关可打印的用户手册以及产品更新，请访问 www.philips.com/support。
CN

ZH 為了環境的永續發展，使用者手冊不提供影印版本，而是隨附在產品的螢幕上說明。如果要取得使用者手冊的影印版本以及產品更新，請瀏覽 www.philips.com/support。
TW



www.philips.com/support



Non-contractual images. / Images non contractuelles. /
Außervertragliche Bilder:

All registered and unregistered trademarks are property
of their respective owners.

Specifications are subject to change without notice

Trademarks are the property of Koninklijke Philips Electronics N.V.
or their respective owners

2012 © Koninklijke Philips Electronics N.V. All rights reserved

www.philips.com
sgsn_1152/98_v1



Be responsible
Respect copyrights

