



AJB4700



User manual

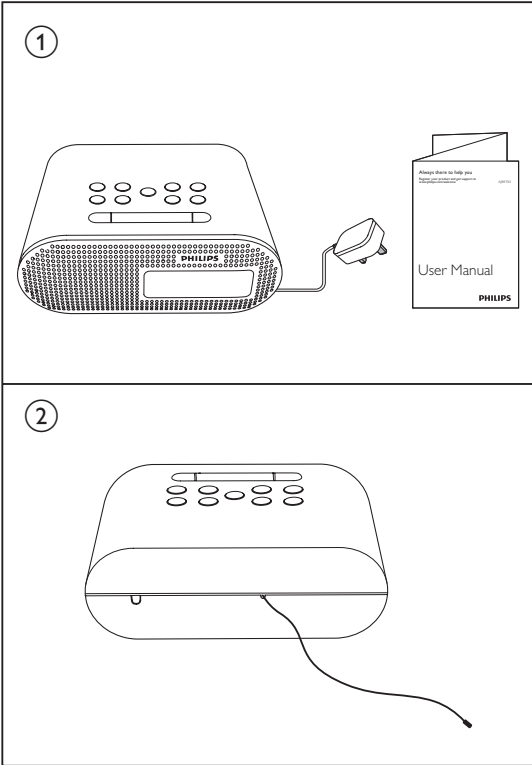
PHILIPS

1 Important

- Read these instructions.
- Heed all warnings.
- Follow all instructions.
- Do not block any ventilation openings. Install in accordance with the manufacturer's instructions.
- Do not install near any heat sources such as radiators, heat registers, stoves, or other apparatus (including amplifiers) that produce heat.
- Protect the power cord from being walked on or pinched, particularly at plugs, convenience receptacles, and the point where they exit from the unit.
- Only use attachments/accessories specified by the manufacturer.
- Use only power supplies listed in the user manual.
- Unplug this unit during lightning storms or when unused for long periods of time.
- Refer all servicing to qualified service personnel. Servicing is required when the unit has been damaged in any way, such as power-supply cord or plug is damaged, liquid has been spilled or objects have fallen into the unit, the unit has been exposed to rain or moisture, does not operate normally, or has been dropped.
- This unit shall not be exposed to dripping or splashing.
- Do not place any sources of danger on the unit (e.g. liquid filled objects, lighted candles).
- Where the plug of the Direct Plug-in Adapter is used as the disconnect device, the disconnect device shall remain readily operable.

Warning

- Never remove the casing of this clock radio.
- Never lubricate any part of this clock radio.
- Never place this clock radio on other electrical equipment.
- Keep this clock radio away from direct sunlight, naked flames or heat.
- Make sure that you always have easy access to the power cord, plug or adaptor to disconnect the clock radio from the power.



2 Your FM/DAB+ clock radio

Congratulations on your purchase, and welcome to Philips! To fully benefit from the support that Philips offers, register your product at www.philips.com/welcome.

Introduction

With this clock radio, you can

- listen to FM and Digital Audio Broadcasting (DAB+) radio; and
- set two alarms.

What's in the box (Fig. ①)

3 Get started

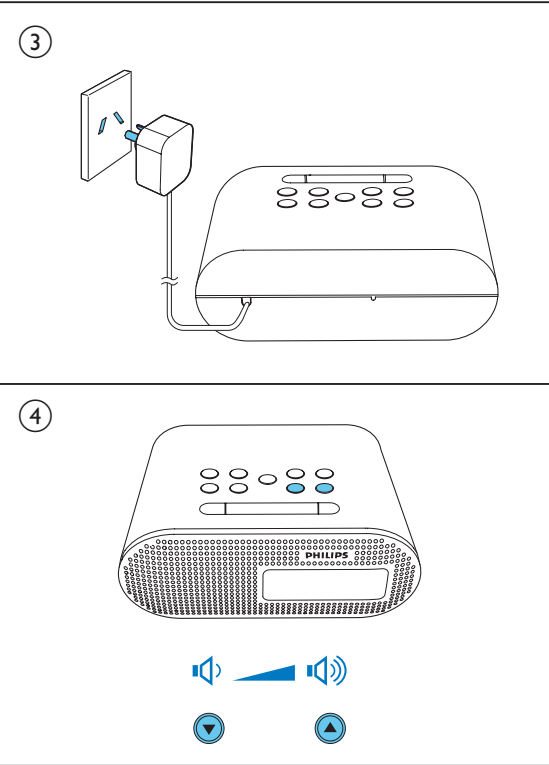
Always follow the instructions in this chapter in sequence.

Prepare FM/DAB+ antenna

For better reception, fully extend and adjust the position of the FM/ DAB+ antenna. (Fig. ②)

Note

- To prevent interference, position the antenna as far as possible from TV, VCR, or other radiation source.



Connect power

Caution

- Risk of product damage! Make sure that the power supply voltage corresponds to the voltage printed on the back or the underside of the clock radio.
- Risk of electric shock! Hold the plug securely when unplugging the adapter.

Note

- The type plate is located on the bottom of the clock radio.

(Fig. ③)

Turn on

Press **POWER**.

- ↳ The clock radio switches to the last selected source.

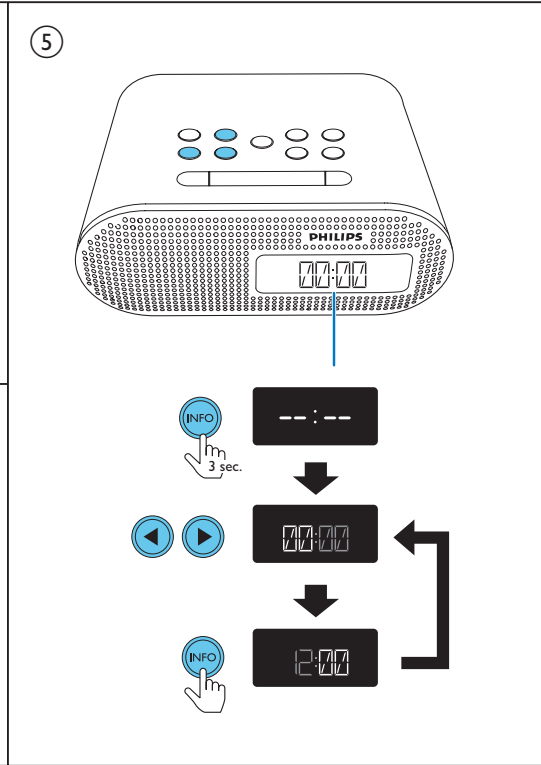
Switch to standby mode

Press and hold **POWER** for 3 seconds.

- ↳ The clock (if set) appears on the display panel.

Set time

- 1 In standby mode, press and hold **INFO** for 3 seconds to activate the time setting mode. (Fig. ⑤)
 - ↳ The hour digits blink.
- 2 Press **◀/▶** to adjust the hour.



3 Press **INFO** to confirm.

- ↳ The minute digits blink.

4 Repeat steps 2-3 to set the minute.

5 Repeat steps 2-3 to set the day, month, and year.

Tip

- To adjust the 12/24 hour format, see "**Use system menu**" > "**Set hour format and synchronize time**".
- When being idle for 10 seconds, the clock radio exits clock setting mode automatically.

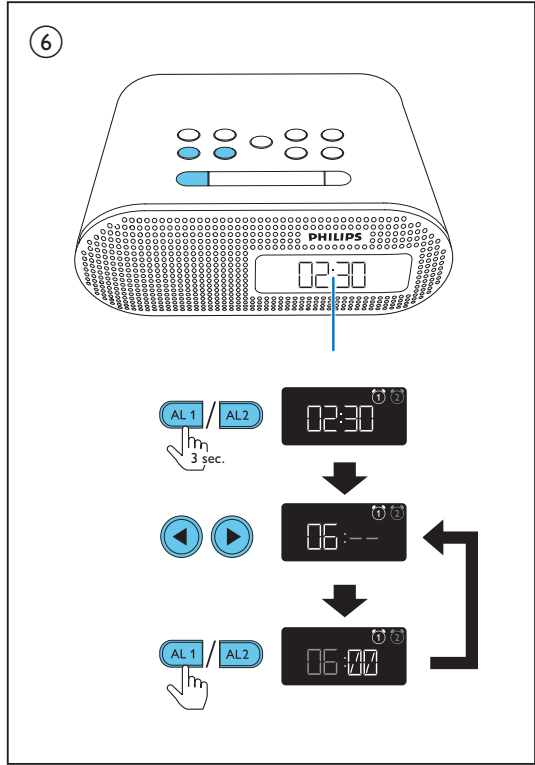
4 Listen to DAB+ radio

Digital Audio Broadcasting (DAB+) is a way of broadcasting radio digitally through a network of transmitters. It provides you with more choice, better sound quality and more information.

For the first time use

- 1 Press **SOURCE** repeatedly to select DAB+ radio.
 - ↳ **[FULL SCAN]** (full scan) is displayed.
- 2 Press **SELECT** to start full scan.
 - ↳ The clock radio stores all DAB+ radio stations automatically and then broadcasts the first available station.
 - ↳ The station list is memorized in the clock radio. When you turn on the unit next time, the station scan does not take place.
 - ↳ If no DAB+ station is found, **[No DAB Station]** (no DAB station) is displayed.

To tune to a station from the station list:



In DAB+ mode, press **TUNING** repeatedly to navigate through the available DAB+ stations.

- ↳ If the signal of the DAB+ radio station is too weak, **[OFF AIR]** (off air) is displayed.

Store DAB+ radio stations automatically

Tip

- New stations and services will be added in the DAB+ broadcast. To make new DAB+ stations and services available, perform full scan regularly.

In DAB+ mode, press and hold **SCAN** for 3 seconds.

- ↳ The clock radio stores all the available DAB+ radio stations automatically.

- ↳ After full scan, the first available station is broadcast.

Store DAB+ radio stations manually

You can store up to 10 DAB+ radio stations.

- 1 Tune to a DAB+ radio station.
- 2 Press and hold **PRESET** for 3 seconds to activate the storing mode.
- 3 Press **TUNING** to select a number.
 - ↳ The preset number is displayed for one second. Then if this position is occupied, the previously stored DAB+ station name will be displayed; if this position is empty, **[Empty]** will be displayed.
- 4 Press **PRESET** to confirm.
- 5 Repeat steps 1-4 to store other DAB+ stations.

Note

- To remove a pre-stored DAB+ radio station, store another station in its place.

Listen to a preset DAB+ radio station

In DAB+ mode, press **PRESET** repeatedly to select a preset radio station.

Use DAB+ menu

- 1 In DAB+ mode, press and hold **MENU** for 3 seconds to access DAB+ menu.
- 2 Press **TUNING** to scroll through the menu options:
 - **[STATION]**: Display a list of available DAB+ stations.
 - **[FULL SCAN]**: Scan and store all available DAB+ radio stations.
 - **[MANUAL]**: Tune to a specific channel/frequency manually and add it to the station list.
 - **[DRC]** (Dynamic Range Control): Add or remove a degree of compensation for differences in the dynamic range among DAB+ stations. You may experiment the options on different source materials to decide which option suits best.
 - **[PRUNE]**: Remove invalid stations from the station list.
 - **[SYSTEM]**: Adjust system settings (see the Chapter "**Use system menu**").
- 3 To select an option, press **SELECT**.
- 4 Repeat steps 2-3 if sub-option is available under one option.

[DRC]

- **[DRC OFF]**: No compensation applied.
- **[DRC HIGH]**: Maximum compensation applied (the default option recommended for noisy environment).
- **[DRC LOW]**: Medium compensation applied.

[PRUNE]

- **[PRUNE N]**: Return to the previous menu.
- **[PRUNE Y]**: Remove invalid stations from the station list.

Show DAB+ information

While listening to DAB+ radio, press **INFO** repeatedly to scroll through the following information (if available):

- ↳ Station name
- ↳ Dynamic Label Segment (DLS)
- ↳ Signal strength
- ↳ Program type (PTY)
- ↳ Ensemble Name
- ↳ Frequency
- ↳ Signal error rate
- ↳ Bitrate
- ↳ Codec
- ↳ Time and date

5 Listen to FM radio

Tune to FM radio stations

- 1 Press **SOURCE** repeatedly to select FM radio.
- 2 Press and hold **TUNING** for 3 seconds.
 - ↳ The FM tuner tunes to a station with strong reception automatically.

To tune to a radio station manually:

Press **TUNING** repeatedly to tune to a radio station.

Store FM radio stations automatically

In FM tuner mode, press and hold **SCAN** for 3 seconds.

- ➔ The clock radio stores all the available FM radio stations automatically.

- ➔ The first stored radio station is broadcast.

Store FM radio stations manually

You can store up to 10 FM radio stations.

- 1 Tune to an FM radio station.
- 2 Press and hold **PRESET** for 3 seconds to activate the storing mode.
- 3 Press **TUNING** ◀ / ▶ to select a number:
 - ➔ The preset number is displayed for one second. Then if this position is occupied, the previously stored radio frequency will be displayed; if this position is empty, **[Empty]** will be displayed.
- 4 Press **PRESET** to confirm.
- 5 Repeat steps 1-4 to store more FM stations.



Tip

- To remove a pre-stored FM radio station, store another station in its place.

Select a preset FM radio station

In FM mode, press **PRESET** repeatedly to select a preset radio channel.

Use FM menu

- 1 In FM mode, press and hold **MENU** for 3 seconds to access FM menu.
 - **[SCAN SETTINGS]**
 - **[SYSTEM]** (see the Chapter "Use system menu")
- 3 To select an option, press **SELECT**.
- 4 Repeat steps 2-3 if sub-option is available under one option.**[SCAN SETTINGS]**
 - **[ALL]**: Scan all the available FM radio stations.
 - **[STRONG]**: Scan FM radio stations with strong signals only.

Show RDS information

RDS (Radio Data System) is a service that allows FM stations to show additional information.

- 1 Tune to an RDS station.
- 2 Press **INFO** repeatedly to scroll through the following information (if available):
 - ➔ Station name
 - ➔ Radio text messages
 - ➔ Program type such as **[NEWS]** (news), **[SPORT]** (sport), **[POP M]** (pop music)...
 - ➔ Frequency
 - ➔ Time and date

RDS program types

Program type	Description	Program type	Description
NEWS	News services	FINANCE	Finance
AFFAIRS	Politics and current affairs	CHILDREN	Children's programs

INFO	Special information programs	SOCIAL	Social affairs
SPORT	Sports	RELIGION	Religion
EDUCATE	Education and advanced training	PHONE IN	Phone in
DRAMA	Radio plays and literature	TRAVEL	Travel
CULTURE	Culture, religion and society	LEISURE	leisure
SCIENCE	Science	JAZZ	Jazz Music
VARIED	Entertainment programs	COUNTRY	Country Music
POP M	Pop music	NATION M	National Music
ROCK M	Rock music	OLDIES	Oldies Music
MOR M	Light music	FOLK M	Folk Music
LIGHT M	Light classical music	DOCUMENT	Documentary
CLASSICS	Classical music	TEST	Alarm Test
OTHER M	Special music programs	ALARM	Alarm
WEATHER	Weather		

6 Use system menu

Use the system menus to

- set 12/24 hour format;
- select whether to synchronize time from the DAB+ stations;
- check the software version of this clock radio; and
- reset the clock radio to factory default status.

Set hour format and synchronize time

- 1 Enter the system menu (see "Listen to DAB+ radio" > "Use DAB+ menu" or "Listen to FM radio" > "Use FM menu")
- 2 Press ◀ / ▶ to select **[TIME]**.
- 3 Press **SELECT** to confirm.
- 4 Repeat steps 2-3 to select a sub-option.

Options	Sub-option	Function
[UPDATE]	[DAB]	Synchronize time from DAB+ stations.
	[NONE]	Deactivate time synchronization.
[12/24 HR]	[12]	Display time in 12-hour format.
	[24]	Display time in 24-hour format.

Reset all the settings

- 1 Enter the system menu.
- 2 Press ◀ / ▶ to select **[RESET]**.
- 3 Press **SELECT** to confirm.
- 4 Press ◀ / ▶ to select an option.
 - **[RESET N]**: Return to the previous menu.
 - **[RESET Y]**: Reset the radio to factory default status.
- 5 Press **SELECT** again to confirm.

Know the software version

- 1 Enter the system setting menu.
- 2 Press ◀ / ▶ to select **[SWVER]** (Software version).

- 3 Press **SELECT** to confirm.
 - ➔ The software version of the clock radio is displayed.

7 Other features

Set the alarm timer

You can set two alarms to ring at different time. (Fig. ⑥)



Note

- Make sure that you have set the time correctly.

- 1 Press and hold **AL1** or **AL2** for 3 seconds to activate alarm setting mode.
 - ➔ The alarm icon and the hour digits blink.
- 2 Press ◀ / ▶ repeatedly to set the hour.
- 3 Press **AL1** or **AL2** to confirm.
 - ➔ The minute digits blink.
- 4 Repeat steps 2-3 to set the minute.
- 5 Repeat steps 2-3 to set the alarm source: DAB, FM or buzzer.
- 6 Repeat steps 2-3 to set the alarm volume.
 - ➔ The alarm icon is displayed.



Tip

- When alarms sounds, volume rises gradually.
- If DAB is selected as alarm source, while no DAB+ radio station is available, buzzer is activated when alarm time comes.

Activate/deactivate the alarm timer

- 1 Press **AL1/AL2** to view alarm settings.
- 2 Press **AL1/AL2** repeatedly to activate or deactivate the alarm timer.
 - ➔ The alarm icon appears if the alarm timer is on and disappears if it is off.
 - To stop the ringing alarm, press the corresponding **AL1/AL2**.
 - ➔ The alarm repeats ringing for the next day.

Snooze the alarm

When alarm sounds, press **SNOOZE**.

- ➔ The alarm snoozes and repeats ringing nine minutes later.

Set the sleep timer

This clock radio can switch to standby mode automatically after a preset period.

Press **SLEEP** repeatedly to select the sleep timer period (in minutes).

- ➔ When the sleep timer is activated, **zz** appears.

To deactivate the sleep timer:

- Press **SLEEP** repeatedly until **[OFF]** (off) appears.

15 → 30 → 60 → 90 → 120
↑ OFF

Adjust volume

Press **VOLUME** ▼ / ▲ (Fig. ④)

Adjust display brightness

Press **BRIGHTNESS** repeatedly to select different brightness levels.

8 Product information



Note

- Product information is subject to change without prior notice.

Amplifier

Rated Output Power 0.5 W RMS

Tuner

FM:	
Tuning Range	FM: 87.5 - 108 MHz
Tuning Grid	50 KHz
Sensitivity	<22 dBf
- Mono, 26dB S/N Ratio	
Search Selectivity	25-32 dBf
Total Harmonic Distortion	< 2%
Signal to Noise Ratio	>50 dBA

DAB:

Tuning Range	174.92-239.20MHz
Total Harmonic Distortion	<2%
Signal to Noise Ratio	>55 dBA

General information

AC Power	(Model)	SSW-1920AU-3 (Philips)
	(Input)	100-240 V ~, 50/60 Hz, 0.2 A
	(Output)	6 V --- 0.5 A
Operation Power Consumption		< 3 W
Standby Power Consumption		<1 W
Dimensions - Main Unit (W × H × D)		152 × 62 × 109 mm
Weight - Main Unit		0.3 kg

9 Troubleshooting



Warning

- Never remove the casing of this product.

Philips, make sure that the product is nearby and the model number and serial number are available.

No power

- Make sure that the power adapter is connected properly.
- Make sure that there is power at the AC power outlet.

No sound

- Adjust the volume.

No response from the unit

- Make sure that the unit is connected to power.
- Disconnect and reconnect the AC power plug, then turn the unit on again.

Poor radio reception

- Increase the distance between the unit and your TV or VCR.
- Fully extend the antenna.

10 Notice

Any changes or modifications made to this device that are not expressly approved by Philips Consumer Lifestyle may void the user's authority to operate the equipment.

Disposal of your old product

Your product is designed and manufactured with high quality materials and components, which can be recycled and reused. Never dispose of your product with other household waste. Please inform yourself about the local rules on the separate collection of electrical and electronic products. The correct disposal of these products helps prevent potentially negative consequences on the environment and human health.

Please visit www.recycle.philips.com for additional information on a recycling center in your area.

Environmental information

All unnecessary packaging has been omitted. We have tried to make the packaging easy to separate into three materials: cardboard (box), polystyrene foam (buffer) and polyethylene (bags, protective foam sheet.)

Your system consists of materials which can be recycled and reused if disassembled by a specialized company. Please observe the local regulations regarding the disposal of packaging materials, exhausted batteries and old equipment.



This is CLASS II apparatus with double insulation, and no protective earth provided.



Note

- The type plate is located on the bottom of the product.



All registered and unregistered trademarks are property of their respective owners.
© 2013 Koninklijke Philips Electronics N.V.
All rights reserved.

AJB4700_79_UM_V1.1



PHILIPS

sense and simplicity

Philips Electronics Australia Limited and Philips New Zealand Limited

Warranty against Defects

In this warranty: We or us means Philips Electronics Australia Limited ACN 008 445 743 or Philips New Zealand Limited (Company Number 1723), and our contact details are set out at the end of this warranty.

You means the purchaser or the original end-user of the Goods.

Supplier means the authorised distributor or retailer of the Goods that sold you the Goods in Australia or New Zealand; and

Goods means the product or equipment which was accompanied by this warranty and purchased in Australia or New Zealand.

If you require assistance with the operation of the product, its features or specifications, please call the Philips Consumer Care Centre on 1300 363 391 in Australia or 0800 658 224 in New Zealand.

Australia Our Goods come with guarantees that cannot be excluded under the Australian Consumer Law. You are entitled to a replacement or refund for a major failure and for compensation for any other reasonably foreseeable loss or damage. You are also entitled to have the Goods repaired or replaced if the goods fail to be of acceptable quality and the failure does not amount to a major failure. This is not a complete statement of your legal rights as a consumer.

New Zealand: Our Goods come with guarantees that cannot be excluded under the Consumer Guarantees Act 1993. This guarantee applies in addition to the conditions and guarantees implied by that legislation.

Additional Warranty:

In addition to the rights and remedies that you have under the Australian Consumer Law, Consumer Guarantees Act of New Zealand or any other applicable law, we provide the following warranty against defects:

1. If, during the first 12 months from their date of purchase from the Supplier (**Warranty Period**), the Goods prove defective by reason of improper workmanship or materials and none of your statutory rights or remedies apply, we will repair or replace the Goods without charge.
 2. We do not have to repair or replace the Goods under this Additional Warranty if the Goods have been used for a commercial purpose; misused; improperly or inappropriately installed, operated or repaired; abused; damaged; or not maintained in accordance with the manufacturer's instructions.
 3. Even when we do not have to repair or replace the Goods, we may decide to do so anyway. In some cases, we may decide to substitute the Goods with a similar alternative product of our choosing. All such decisions are at our absolute discretion.
 4. All such repaired, replaced or substituted Goods continue to receive the benefit of this Additional Warranty for the time remaining on the original Warranty Period.
 5. This Additional Warranty is limited to repair, replacement or substitution only. As far as the law permits, we will not be liable for any loss or damage caused to property or persons arising from any cause whatsoever.
 6. In order to claim under this Additional Warranty you must telephone us on 1300 363 391 in Australia or 0800 658 224 in New Zealand within the Warranty Period. You will be asked for details of the Goods, a description of the defect and your personal details. Upon accepting your claim, we shall assist you with either returning the Goods to the Supplier for replacement or to the most convenient Philips Authorised Service Centre for your Goods to be repaired. In some cases we may require that you return to the Goods to us (at the address below) for repair, replacement or substitution.
- * All returned Goods must be accompanied by satisfactory proof of purchase which clearly indicates the name and address of the Supplier, the date and place of purchase and identifies product. It is best to provide a legible and unmodified receipt or sales invoice.
- * You must bear any expense for return of the Goods or otherwise associated with making your claim under this Additional Warranty.
- This warranty is only valid and enforceable in Australia and New Zealand.

Contact us or the place of purchase for further details.

Philips Electronics Australia Limited

Level 1, 65 Epping Rd,

North Ryde, SYDNEY NSW 2113

Consumer Care: 1300 363 391

E-mail: pceninfo.australia@philips.com

Website: www.philips.com/support

Philips New Zealand Limited

Level 2, 1 Nugent St,

Grafton, AUCKLAND, 1023

Consumer Care: 0800 658 224

Email: pceninfo.australia@philips.com

Website: www.philips.com/support

August 2011