

Register your product and get support at
www.philips.com/welcome

HTS8562



PHILIPS

Contents

1	Using help	4	7	Use your home theater	20
	Navigate the onscreen help	4		Choose sound	20
2	Help and support	5		Discs	21
	Update your onscreen help	5		USB storage devices	24
	Tutorials	6		DivX	24
	FAQs	6		Audio, video, and picture options	25
	Contact Philips	6		Radio	26
3	Notice	6		MP3 player	27
	Open source software	6		iPod or iPhone	27
	Trademarks	6		Use smartphone	28
4	Important	8		Browse PC through DLNA	29
	Safety	8		Browse Net TV	32
	Care for your product	8		Rent online video	33
	Care of the environment	9		Multiview	33
	3D health warning	9		EasyLink	34
5	Your home theater	10	8	Change settings	35
	Main unit	10		Picture	35
	Remote control	10		Sound	36
6	Connect your home theater	12		Language	37
	Speakers	12		Parental control	37
	Connectors	14		Energy saving	38
	Connect to TV	15		Apply factory settings	38
	Connect to other devices through HDMI	17	9	Update software	39
	Connect audio from TV and other devices	17		Check software version	39
	Computers and the Internet	18		Update software through the Internet	39
				Update software through USB	39
			10	Product specifications	40
			11	Troubleshooting	43
			12	Index	46

1 Using help

Philips is committed to develop products that contribute to a greener environment. To save paper and the environment, access the help on your home theater through the onscreen interface.

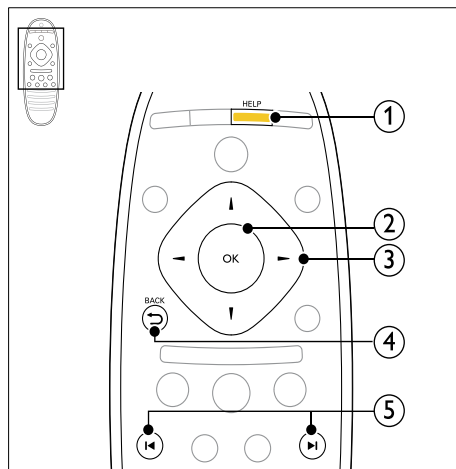
The onscreen help contains all the information that you need to set up your home theater. However, if you prefer to print the user manual, download the PDF version from www.philips.com/support. Follow the instructions on the website to select your language, and then enter your model number.

Access the onscreen help by pressing **HELP** (yellow button) on your remote control.

The onscreen help has two panels.

- The left panel contains the **Contents** and **Index**. Navigate the **Contents** or **Index** to select a page.
- The right panel contains the content of each page. Select **Related topics** for additional help on the content.

Navigate the onscreen help



- ① **HELP**
Access the onscreen help.
- ② **OK**
Display the selected page, or expand topics in **Contents**.
- ③ **Navigation buttons**
 - Up: Scroll up or move to the previous page.
 - Down: Scroll down or move to the next page.
 - Right: Navigate to the right panel or next index entry.
 - Left: Navigate to the left panel or previous index entry.
- ④ **↶ BACK**
Move up in the **Contents** or **Index**.
From the right panel, move to the **Contents** on the left panel.
- ⑤ **◀/▶ (Previous/Next)**
 - **◀**: Display the last viewed page in history.
 - **▶**: Display the next page from history.

2 Help and support

Watch video tutorials, download a software update, and find answers to many frequently answered questions (FAQs) on your product at www.philips.com.

Update your onscreen help

Philips continually tries to improve its products. To make sure that your onscreen help is up to date with the latest information, update your home theater with the latest onscreen help.

Download the latest help from www.philips.com/support.

What you need

- A USB flash drive, with at least 35MB of memory. The USB flash drive must be FAT or NTFS formatted. Do not use a USB hard drive.
- A computer with Internet access.
- An archive utility that supports the ZIP file format (for example, WinZip® for Microsoft® Windows® or StuffIt® for Macintosh®).

Step 1: Check the current version of help

Check the current version of onscreen help installed in your home theater. If the version is lower than the version available at www.philips.com/support, download and install the latest onscreen help.

The last two digits indicate the version of the onscreen help installed in your home theater. For example, if the version in the home theater is 'Subsystem SW: 35-00-00-05', '05' represents the version of the onscreen help currently installed.

- 1 Press **⬆** (Home).
- 2 Select **[Setup]**, and then press **OK**.
- 3 Select **[Advanced]** > **[Version Info.]**, and then press **OK**.

Step 2: Download the latest onscreen help

- 1 Connect a USB flash drive to your computer.

- 2 In your web browser, go to www.philips.com/support.
- 3 At the Philips support website, find your product and click on **User manuals**, and then locate the **User Manual Upgrade Software**.
 - ➔ The help update is available as a zip file.
- 4 Save the zip file in the root directory of your USB flash drive.
- 5 Use the archive utility to extract the help update file in the root directory of the USB flash drive.
 - ➔ A file named 'HTSxxxxeDFU.zip' is extracted under the **UPG_ALL** folder of your USB flash drive, 'xxxx' being the model number of your home theater.
- 6 Disconnect the USB flash drive from your computer.

Step 3: Update onscreen help



Caution

- Before you connect the USB flash drive to your home theater, make sure that there is no disc in the disc compartment, and the disc compartment is closed.

- 1 Switch on the TV.
- 2 Connect the USB flash drive containing the downloaded file to your home theater.
- 3 Press **⬆** (Home).
- 4 Enter **338** on the remote control.
 - ➔ Follow the instructions on the TV to confirm the update. Do not switch off the home theater or remove the USB flash drive during the update.
- 5 Disconnect the USB flash drive from the home theater.



Warning

- If power fails during the update, do not remove the USB flash drive from the home theater.
- If an error occurs during the update, retry the procedure. If the error reoccurs, contact Philips Consumer Care.

Tutorials

To set up your home theater and get additional information, refer to the video tutorials at www.philips.com/support.

FAQs

If you have a problem, refer to the frequently asked questions (FAQs) for this home theater at www.philips.com/support.

If you still need help, contact Philips Consumer Care in your country.



Warning

- Do not attempt to repair your home theater yourself. This may cause severe injury, irreparable damage to your home theater, or void your warranty.

Contact Philips

If you contact Philips, you will be asked for the model and serial number of your product. The model number and serial number are on the back or bottom of your product. Note the numbers before you call Philips:

Model No. _____

Serial No. _____

3 Notice

This section contains the legal and trademark notices.

Open source software

Philips Electronics Singapore Pte Ltd hereby offers to deliver, upon request, a copy of the complete corresponding source code for the copyrighted open source software packages used in this product for which such offer is requested by the respective licenses. This offer is valid up to three years after product purchase to anyone in receipt of this information. To obtain source code, please contact open.source@philips.com. If you prefer not to use email or if you do not receive confirmation receipt within a week after mailing to this email address, please write to "Open Source Team, Philips Intellectual Property & Standards, P.O. Box 220, 5600 AE Eindhoven, The Netherlands". If you do not receive timely confirmation of your letter, please email to the email address above. The texts of the licenses and acknowledgements for open source software used in this product are included in the user manual.

Trademarks



"Blu-ray 3D" and "Blu-ray 3D" logo are trademarks of Blu-ray Disc Association.



BONUSVIEW™

'BD LIVE' and 'BONUSVIEW' are trademarks of Blu-ray Disc Association.



'AVCHD' and 'AVCHD' logo are trademarks of Matsushita Electric Industrial Co., Ltd and Sony Corporation.



'DVD Video' is a trademark of DVD Format/Logo Licensing Corporation.



Java and all other Java trademarks and logos are trademarks or registered trademarks of Sun Microsystems, Inc. in the United States and/or other countries.

x.v.Colour

'x.v.Colour' is a trademark of Sony Corporation.



Manufactured under license under U.S. Patent #'s: 5,451,942; 5,956,674; 5,974,380; 5,978,762; 6,226,616; 6,487,535; 7,392,195; 7,272,567; 7,333,929; 7,212,872 & other U.S. and worldwide patents issued & pending. DTS and the Symbol are registered trademarks, & DTS-HD, and DTS-HD Master Audio | Essential and the DTS logos are trademarks of DTS, Inc. Product includes software. © DTS, Inc. All Rights Reserved.



Manufactured under license from Dolby Laboratories. Dolby, Pro Logic, and the double-D symbol are trademarks of Dolby Laboratories.



DivX®, DivX Certified®, DivX Plus™ HD and associated logos are trademarks of DivX, Inc. and are used under license.

ABOUT DIVX VIDEO: DivX® is a digital video format created by DivX, Inc. This is an official DivX Certified® device that plays DivX video. Visit divx.com for more information and software tools to convert your files into DivX video.

ABOUT DIVX VIDEO-ON-DEMAND: This DivX Certified® device must be registered in order to play purchased DivX Video-on-Demand (VOD) movies. To obtain your registration code, locate the DivX VOD section in your device setup menu. Go to vod.divx.com for more information on how to complete your registration.



HDMI, the HDMI logo, and High-Definition Multimedia Interface are trademarks or registered trademarks of HDMI licensing LLC in the United States and other countries.



SDHC Logo is a trademark of SD-3C, LLC.



4 Important

Read and understand all instructions before you use your home theater. If damage is caused by failure to follow instructions, the warranty does not apply.

Safety

Risk of electric shock or fire!

- Never expose the product and accessories to rain or water. Never place liquid containers, such as vases, near the product. If liquids are spilt on or into the product, disconnect it from the power outlet immediately. Contact Philips Consumer Care to have the product checked before use.
- Never place the product and accessories near naked flames or other heat sources, including direct sunlight.
- Never insert objects into the ventilation slots or other openings on the product.
- Where the mains plug or an appliance coupler is used as the disconnect device, the disconnect device shall remain readily operable.
- Disconnect the product from the power outlet before lightning storms.
- When you disconnect the power cord, always pull the plug, never the cable.

Risk of short circuit or fire!

- Before you connect the product to the power outlet, ensure that the power voltage matches the value printed on the back or bottom of the product. Never connect the product to the power outlet if the voltage is different.

Risk of injury or damage to the home theater!

- For wall-mountable products, use only the supplied wall mount bracket. Secure the wall mount to a wall that can support the combined weight of the product and the wall mount. Koninklijke Philips Electronics N.V. bears no responsibility for improper wall mounting that results in accident, injury or damage.
- For speakers with stands, use only the supplied stands. Secure the stands to the speakers tightly. Place the assembled stands on flat, level surfaces that can support the combined weight of the speaker and stand.

- Never place the product or any objects on power cords or on other electrical equipment.
- If the product is transported in temperatures below 5°C, unpack the product and wait until its temperature matches room temperature before connecting it to the power outlet.
- Visible and invisible laser radiation when open. Avoid exposure to beam.
- Do not touch the disc optical lens inside the disc compartment.
- Parts of this product can be made of glass. Handle with care to avoid injury and damage.

Risk of overheating!

- Never install this product in a confined space. Always leave a space of at least four inches around the product for ventilation. Ensure curtains or other objects never cover the ventilation slots on the product.

Risk of contamination!

- Do not mix batteries (old and new or carbon and alkaline, etc.).
- Remove batteries if they are exhausted or if the remote control is not to be used for a long time.
- Batteries contain chemical substances, they should be disposed of properly.

Risk of swallowing batteries!

- The product/remote control may contain a coin type battery, which can be swallowed. Keep the battery out of reach of children at all times!

Care for your product

- Do not insert any objects other than discs into the disc compartment.
- Do not insert warped or cracked discs into the disc compartment.
- Remove discs from the disc compartment if you are not using the product for an extended period of time.
- Use only microfiber cloth to clean the product.

Care of the environment



Your product is designed and manufactured with high quality materials and components, which can be recycled and reused.



When this crossed-out wheeled bin symbol is attached to a product it means that the product is covered by the European Directive 2002/96/EC. Please inform yourself about the local separate collection system for electrical and electronic products.

Please act according to your local rules and do not dispose of your old products with your normal household waste.

Correct disposal of your old product helps to prevent potential negative consequences for the environment and human health.



Your product contains batteries covered by the European Directive 2006/66/EC, which cannot be disposed with normal household waste.

Please inform yourself about the local rules on separate collection of batteries because correct disposal helps to prevent negative consequences for the environmental and human health.

3D health warning

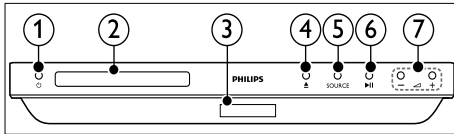
If you or your family has a history of epilepsy or photosensitive seizures, consult a medical professional before exposing yourself to flashing light sources, rapid image sequences or 3D viewing.

To avoid discomfort such as dizziness, headache or disorientation, we recommend not watching 3D for extended periods of time. If you experience any discomfort, stop watching 3D and do not immediately engage in any potentially hazardous activity (for example driving a car) until your symptoms have disappeared. If symptoms persist, do not resume watching 3D without consulting a medical professional first. Parents should monitor their children during 3D viewing and ensure they do not experience any discomfort as mentioned above. Watching 3D is not recommended for children under six years of age as their visual system is not fully developed yet.

5 Your home theater

Congratulations on your purchase, and welcome to Philips! To fully benefit from the support that Philips offers, register your home theater at www.philips.com/welcome.

Main unit



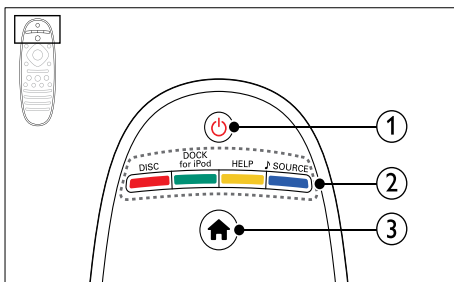
- ① **⏻ (Standby-On)**
Switch the home theater on or to standby.
- ② **Disc compartment**
- ③ **Display panel**
- ④ **▲ (Open/Close)**
Open or close the disc compartment, or eject the disc.
- ⑤ **SOURCE**
Select an audio or video source for the home theater.
- ⑥ **▶|| (Play/Pause)**
Start, pause or resume play.
- ⑦ **⏮ +/⏭ (Volume)**
Increase or decrease volume.

Remote control

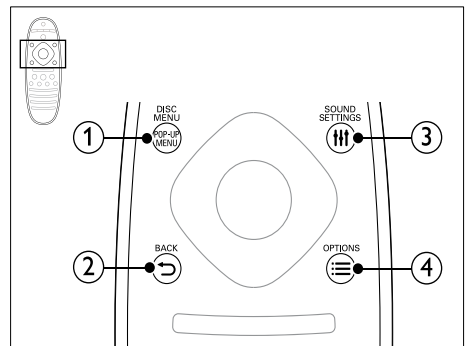
This section includes an overview of the remote control.

Overview

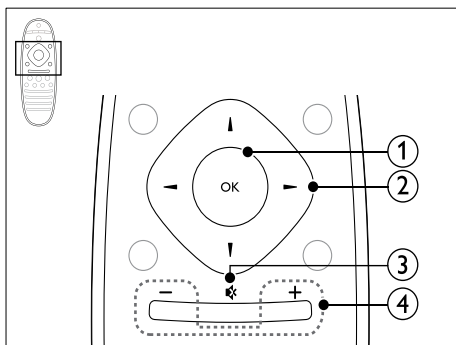
Control your home theater with the remote control.



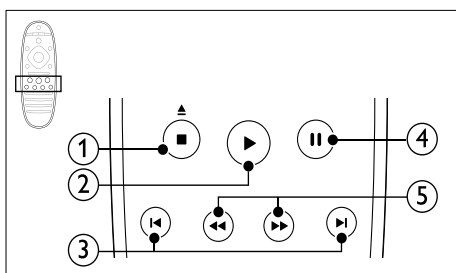
- ① **⏻ (Standby-On)**
 - Switch the home theater on or to standby.
 - When EasyLink is enabled, press and hold for at least three seconds to switch all connected HDMI CEC compliant devices to standby.
- ② **Source buttons / Color buttons**
 - **Color buttons:** Select tasks or options for Blu-ray discs.
 - **DISC:** Switch to disc source.
 - **DOCK for iPod:** Switch to Philips dock for iPod or iPhone.
 - **HELP:** Access the onscreen help.
 - **♪ SOURCE:** Select an audio input source or radio source.
- ③ **🏠 (Home)**
Access the home menu.



- ① **POP-UP MENU/DISC MENU**
Access or exit the disc menu when you play a disc.
- ② **↶ BACK**
 - Return to a previous menu screen.
 - In radio mode, press and hold to erase the current preset radio stations.
- ③ **🔊 SOUND SETTINGS**
Access or exit sound options.
- ④ **☰ OPTIONS**
 - Access more play options while playing a disc or a USB storage device.
 - In radio mode, set a radio station.

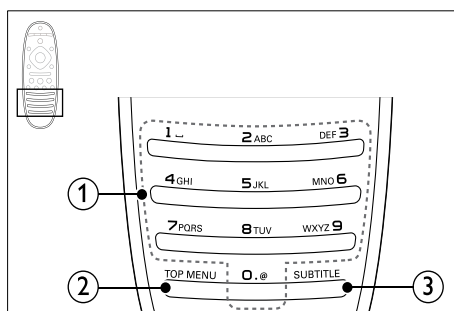


- ① **OK**
Confirm an entry or selection.
- ② **Navigation buttons**
 - Navigate menus.
 - In radio mode, press left or right to start auto search.
 - In radio mode, press up or down to tune the radio frequency.
- ③ *** (Mute)**
Mute or restore volume.
- ④ **+/- (Volume)**
Increase or decrease volume.



- ① **■ (Stop) / ▲ (Eject/ Open/Close)**
 - Stop play.
 - Press and hold for three seconds to open or close the disc compartment, or eject the disc.
- ② **▶ (Play)**
Start or resume play.
- ③ **◀ / ▶ (Previous/Next)**
 - Skip to the previous or next track, chapter or file.
 - In radio mode, select a preset radio station.

- ④ **⏸ (Pause)**
Pause play.
- ⑤ **◀◀ / ▶▶ (Fast Backward/Fast Forward)**
Search backwards or forward. Press repeatedly to change the search speed.



- ① **Alphanumeric buttons**
 - Enter values or letters (using SMS style entry).
 - In radio mode, select a preset radio station.
- ② **TOP MENU**
Access the main menu of a video disc.
- ③ **SUBTITLE**
Select subtitle language for video.

EasyLink controls

With Easylink, you can control your home theater and the TV with the following buttons on your home theater remote control (see 'EasyLink' on page 34).

- **⏻ (Standby-On):** Press and hold to switch your home theater, TV and the connected devices to standby.
- **▶ (Play):** When a video disc is in the disc compartment, wake up the TV from standby, and then play a disc.

6 Connect your home theater

This section helps you connect your home theater to a TV and other devices.

For information about the basic connections of your home theater and accessories, see the quick start guide. For a comprehensive interactive guide, see www.connectivityguide.philips.com.

Note

- For identification and supply ratings, refer to the type plate at the back or bottom of the product.
- Before you make or change any connections, make sure that all devices are disconnected from the power outlet.

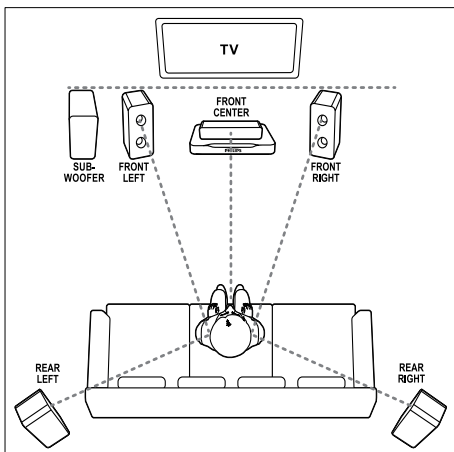
Speakers

Position, connect, and set up your speakers for best surround sound.

Position

Speaker position plays a critical role in setting up a surround sound effect.

For best results, place your speakers and the subwoofer as shown below.



Note

- Surround sound depends on factors such as room shape and size, type of wall and ceiling, windows and reflective surfaces, and speaker acoustics. Experiment with the speaker positions to find the optimum setting for you.

Follow these general guidelines, and then set up your speakers.

- 1 Seating position:**
This is the center of your listening area.
- 2 FRONT CENTER** (front center) speaker:
Place the center speaker directly in front of the seating position, either above or below your TV. Make sure that it is close to your ear height when you are seated.
- 3 FRONT LEFT** (front left) and **FRONT RIGHT** (front right) speakers:
Place the left and right speakers in the front, and equidistant from the center speaker in an arc, so that all the three speakers are at same distance from your seating position. For best effect, point the speakers towards the seating position and place the speakers close to the ear level (when seated).
- 4 REAR LEFT** (rear left) and **REAR RIGHT** (rear right) speakers:
Place the rear surround speakers to the left and right side of your seating position, either in line with it or slightly behind it. For best effect, point the speakers towards the seating position and place the speakers just above the ear level (when seated).
- 5 SUBWOOFER** (subwoofer):
Place the subwoofer at least one meter to the left or right of the TV. Leave about ten centimeter clearance from the wall.

Connect

Connect your speakers and the subwoofer to your home theater as described in the quick start guide.

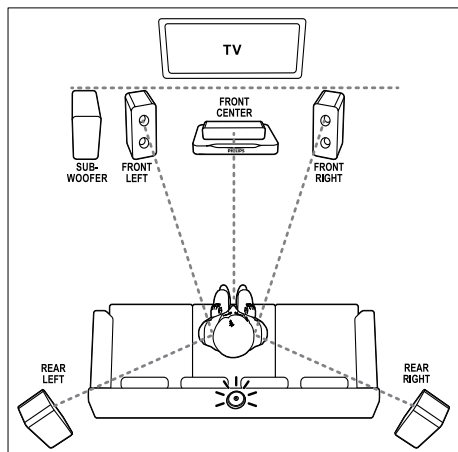
Calibrate

You can set up the speakers automatically by using a calibration microphone, or manually through the speaker setup menu.

Automatic setup

When you set up the home theater for the first time, the setup menu prompts you to calibrate your speakers for the best surround sound. If you move your speakers or change the layout of the room, calibrate the speakers again to continue getting the best sound.

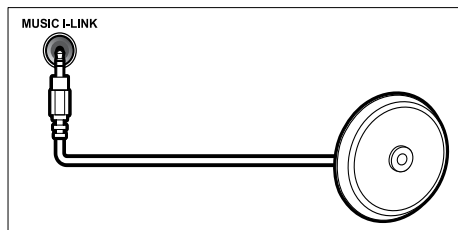
Place the calibration microphone as close to the seating position as possible, at ear height.



Before you start, check that:

- The calibration microphone is less than 5 meters (16 feet) from each of the speakers. If it is more, set up your speakers manually (see 'Manual setup' on page 13);
- There is nothing between the speakers and the microphone to block the sound, and
- The room is quiet. For example, switch off your TV or radio, close doors and windows, and switch off your air conditioning.

- 1 Connect the calibration microphone to the **MUSIC iLINK** connector on your home theater.



- 2 Press **⬆ (Home)** on your home theater remote control, and select **[Setup] > [Audio] > [Acoustic calibration]**.
- 3 Follow the onscreen instructions to set up the sound.
 - ↳ During the calibration, you hear a series of test tones from the speakers and the subwoofer. These sounds are normal - don't change the volume or move the speakers, and be sure to keep quiet until the calibration finishes.
- 4 After the auto calibration, disconnect the calibration microphone.

Manual setup

If the position of the speakers are more than 5 meters (16 feet) away from the calibration microphone, or you want to fine-tune the speaker settings after the auto calibration, you can set up the speakers manually through the speaker setup menu.

- 1 Connect your speakers and subwoofer as described in the Quick start guide.
- 2 Press **⬆ (Home)** on your home theater remote control, and select **[Setup] > [Audio] > [Speaker Setup]**.
- 3 Enter the distance for each speaker, and then listen to the test tones and change the volume. Experiment a little with the speaker positions to find the ideal setting.

Wireless rear speakers

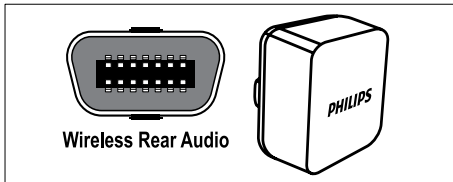
Convert the rear speakers of your home theater into wireless speakers by using a wireless module.

- The wireless transmitter connects to the **Wireless Rear Audio** connector on your home theater.
- The wireless receiver connects to the rear surround speakers and the power supply. For more information, refer to the user manual of your wireless module.

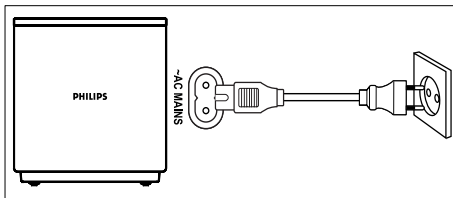
Wireless module - RWSS5510

Purchase the wireless module RWSS5510 (sold separately) from a Philips authorized dealer.

Wireless transmitter:



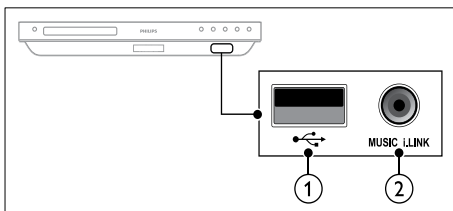
Wireless receiver:



Connectors

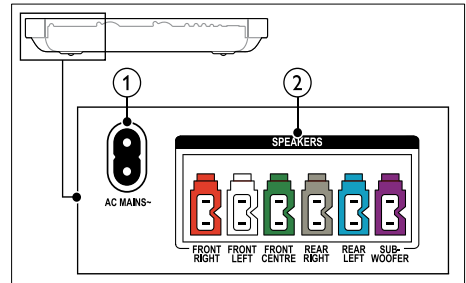
Connect other devices to your home theater.

Front



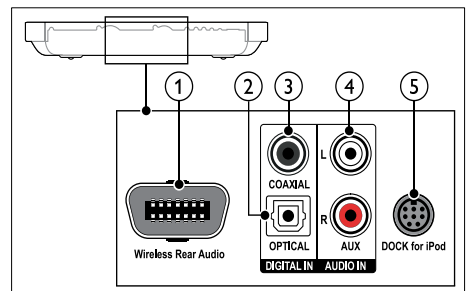
- ① **USB**
Audio, video or picture input from a USB storage device.
- ② **MUSIC i.LINK**
 - Audio input from an MP3 player.
 - Connect to the auto calibration microphone.

Rear left



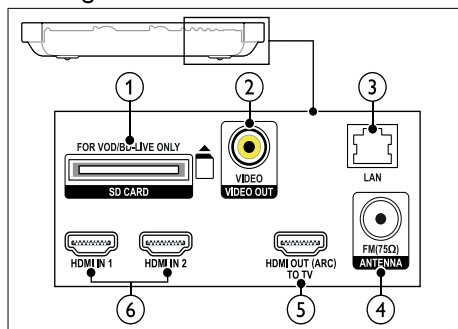
- ① **AC MAINS~**
Connect to the power supply.
- ② **SPEAKERS**
Connect to the supplied speakers and subwoofer.

Rear center



- ① **Wireless Rear Audio**
Connect to a Philips wireless module.
(Model: Philips RWSS5510, sold separately)
- ② **DIGITAL IN-OPTICAL**
Connect to an optical audio output on the TV or a digital device.
- ③ **DIGITAL IN-COAXIAL**
Connect to a coaxial audio output on the TV or a digital device.
- ④ **AUDIO IN-AUX**
Connect to an analog audio output on the TV or an analog device.
- ⑤ **DOCK for iPod**
Connect to a Philips dock for iPod or iPhone. (Model: Philips DCK3061)

Rear right



- ① **SD CARD-FOR VOD/BD-LIVE ONLY**
Slot for SD card. The SD card is used to rent online videos and access BD-Live.
- ② **VIDEO OUT-VIDEO**
Connect to the composite video input on the TV.
- ③ **LAN**
Connect to the LAN input on a broadband modem or router.
- ④ **ANTENNA FM 75 Ω**
Signal input from an antenna, cable or satellite.
- ⑤ **HDMI OUT (ARC)TO TV**
Connect to the HDMI input on the TV.
- ⑥ **HDMI IN 1/2**
Connect to the HDMI output on a digital device.

Connect to TV

Connect your home theater to a TV to watch videos. You can listen to audio from TV programs through your home theater speakers. Use the best quality connection available on your home theater and TV.

Option 1: Connect to TV through HDMI (ARC)

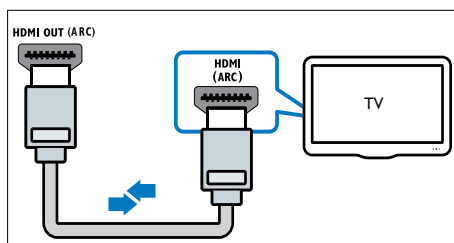
Best quality video

Your home theater supports HDMI version 1.4 - Audio Return Channel (ARC). If your TV is HDMI ARC compliant, connect your home theater to the TV through the HDMI ARC connection for easy and quick setup.

With HDMI ARC, you do not need an additional audio cable to play audio from TV through your home theater.

- 1 Using a High Speed HDMI cable, connect the **HDMI OUT (ARC)** connector on your home theater to the **HDMI ARC** connector on the TV.

The **HDMI ARC** connector on the TV might be labeled **HDMI IN** or **HDMI**. For details on TV connectors, see the TV user manual.



- 2 On your TV, turn on HDMI-CEC. For details, see the TV user manual.
↳ When you play a disc on your home theater; the video is automatically displayed on TV and the audio is automatically played on the home theater.
- 3 If audio from the TV does not play automatically on your home theater; set up the audio manually (see 'Set up audio for connected devices' on page 18).

Option 2: Connect to TV through HDMI

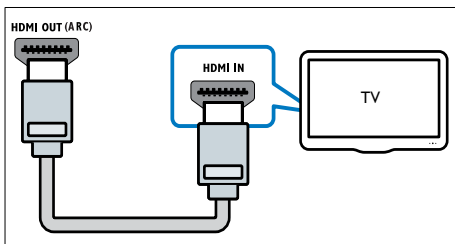
Best quality video

If your TV is not HDMI ARC compliant, connect your home theater to the TV through a standard HDMI connection.

With a standard HDMI connection, you need an additional audio cable to play the audio from the TV through your home theater (see 'Connect audio from TV and other devices' on page 17).

- 1 Using a High Speed HDMI cable, connect the **HDMI OUT (ARC)** connector on your home theater to the **HDMI IN** connector on the TV.

The HDMI connector on the TV might be labeled **HDMI IN**.



- 2 On your TV, turn on HDMI-CEC. For details, see the TV user manual.
↳ When you play a disc on your home theater, the video is automatically displayed on TV and the audio is automatically played on the home theater.
- 3 To play audio from TV programs through your home theater, connect an additional audio cable (see 'Connect audio from TV and other devices' on page 17).
- 4 If audio from the TV does not play automatically on your home theater, set up the audio manually (see 'Set up audio for connected devices' on page 18).

Note

- If your TV has a DVI connector, you can use an HDMI/DVI adapter to connect to TV.

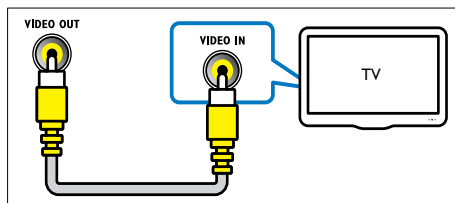
Option 3: Connect to the TV through composite video

Basic quality video

If your TV does not have HDMI connectors, connect your home theater to the TV through a composite connection. A composite connection does not support high-definition video.

With a composite connection, you need an additional audio cable to play the audio from the TV through your home theater (see 'Connect audio from TV and other devices' on page 17).

- 1 Using a composite video cable, connect the **VIDEO** connector on your home theater to the composite video connector on the TV. The composite video connector might be labeled **AV IN**, **VIDEO IN**, **COMPOSITE**, or **BASEBAND**.

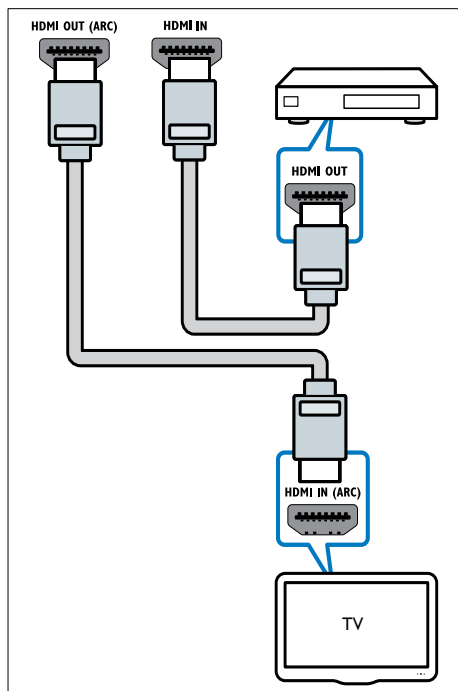


- 2 On your TV, switch to the correct video input.
- 3 To play audio from TV programs through your home theater, connect an additional audio cable (see 'Connect audio from TV and other devices' on page 17).
On your home theater, press **SOURCE** repeatedly to select the correct audio input.

Connect to other devices through HDMI

Connect digital devices directly to your home theater through an HDMI connection. Digital devices can include a set-top box, games console, or camcorder.

With standard HDMI connection, the video from the connected device is automatically displayed on your TV and the audio is automatically played on your home theater:



- 1 Using a High Speed HDMI cable, connect the **HDMI OUT** connector on your digital device to the **HDMI IN** connector on your home theater.
- 2 Connect your home theater to the TV (see 'Connect to TV' on page 15).
- 3 On the connected devices, turn on HDMI-CEC. For details, see the user manual of the devices.
- 4 If the TV is not HDMI CEC compliant, select the correct video input on your TV.
- 5 Select the correct HDMI input on your home theater (see 'Set up audio for connected devices' on page 18).

Connect audio from TV and other devices

Play audio from TV or other devices through your home theater.

Use the best quality connection available on your TV, home theater, and other devices.

Note

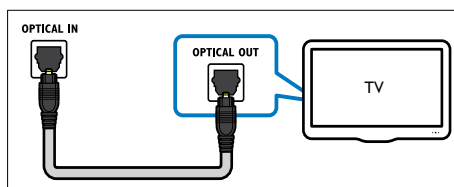
- The audio connections in this user manual are only recommendations. You can use other connections too.
- When your home theater and TV are connected through **HDMI ARC**, an audio connection is not required.

Option 1: Connect audio through a digital optical cable

Best quality audio

Using an optical cable, connect the **OPTICAL** connector on your home theater to the **OPTICAL OUT** connector on the TV or other device.

The digital optical connector might be labeled **SPDIF**, **SPDIF OUT**, or **OPTICAL**.

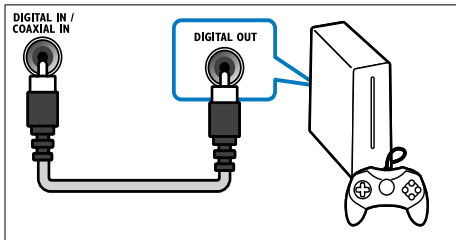


Option 2: Connect audio through a digital coaxial cable

Good quality audio

Using a coaxial cable, connect the **COAXIAL** connector on your home theater to the **COAXIAL/DIGITAL OUT** connector on the TV or other device.

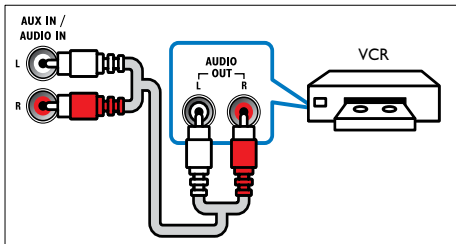
The digital coaxial connector might be labeled **DIGITAL AUDIO OUT**.



Option 3: Connect audio through analog audio cables

Basic quality audio

Using an analog cable, connect the **AUX** connectors on your home theater to the **AUDIO OUT** connectors on the TV or other device.



Set up audio for connected devices

When you connect a device to your home theater, check the audio settings.

- 1 On your TV and other devices, turn on HDMI-CEC. For details, see the user manual of the TV and the other device.
- 2 Select 'Amplifier' from the TV speakers menu. For details, see the TV user manual.

- 3 On your home theater, turn on System Audio Control, and then map the audio of the connected device to the correct connectors on your home theater (see 'Play audio from home theater' on page 35). If the connected device is not HDMI-CEC compliant, press **SOURCE** repeatedly on your home theater to select the correct audio input.

Computers and the Internet

Connect your home theater to your computer network and the internet, and enjoy:

- **Multimedia content streamed from your computer:** Play music, photo, and video from a computer or other media server on your network (see 'Browse PC through DLNA' on page 29).
- **Net TV** (Not available in China): Browse Net TV services to access online information, games, news, music, and other services (see 'Browse Net TV' on page 32).
- **Software update:** Update the home theater software through the network (see 'Update software through the Internet' on page 39).

! Caution

- Before you try to connect the home theater to a computer network, familiarize yourself with the network router, media server software and networking principles. If necessary, read documentation that accompanies the network components. Philips is not responsible for lost, damaged, or corrupt data.

Wired connection

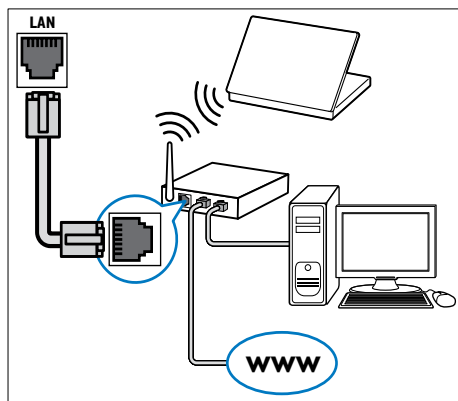
Connect your home theater to your router through a network cable.

What you need

- A network router (with DHCP enabled).
- A network cable (RJ45 straight cable).
- A computer with media server software installed (see 'Set up media server software' on page 29).
- For Net TV and software update, make sure that the network router has access to the Internet, and is not restricted by firewalls or other security systems.

Set up the wired network

Connect your home theater to your router as shown below, and then switch on the devices.



- 1 Connect the home theater to a network router through a wired connection (see 'Wired connection' on page 18).
- 2 Turn on your TV, and switch to the correct source for the home theater.
- 3 Press **⬆** (Home).
- 4 Select **[Setup]**, and then press **OK**.
- 5 Select **[Network] > [Network Installation] > [Wired (Ethernet)]**, and then press **OK**.
- 6 Follow the instructions on the TV to complete the setup.
 - ➔ The home theater connects to the internet. If connection fails, select **[Retry]**, and then press **OK**.
- 7 Select **[Finish]**, and then press **OK** to exit.

Check wired network settings

- 1 Press **⬆** (Home).
- 2 Select **[Setup]**, and then press **OK**.
- 3 Select **[Network] > [View Network Settings]**, and then press **OK**.
 - ➔ The current network settings are displayed.

Wireless connection

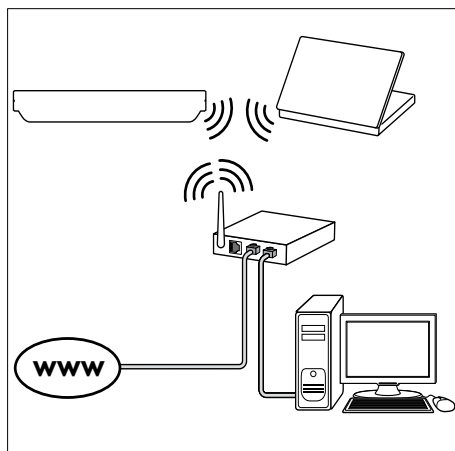
Connect your home theater to your router through a wireless connection.

What you need

- A network router (with DHCP enabled).
- A computer with media server software installed (see 'Set up media server software' on page 29).
- For Net TV and software update, make sure that the network router has access to the Internet and is not restricted by firewalls or other security systems.

Set up the wireless network

Your home theater has built-in Wi-Fi for easy access to the wireless network. Connect your home theater to your router as shown below, and then switch on the devices.



- 1 Connect the home theater to a network router through a wireless connection (see 'Wireless connection' on page 19).
- 2 Turn on your TV, and switch to the correct source for the home theater.
- 3 Press **⬆** (Home).
- 4 Select **[Setup]**, and then press **OK**.
- 5 Select **[Network] > [Network Installation] > [Wireless (Wi-Fi)]**, and then press **OK**.
- 6 Follow the instructions on the TV to complete the setup.
 - ➔ The home theater connects to the internet. If connection fails, select **[Retry]**, and then press **OK**.
- 7 Select **[Finish]**, and then press **OK** to exit.

Check wireless network settings

- 1 Press **Home**.
- 2 Select **[Setup]**, and then press **OK**.
- 3 Select **[Network] > [View Wireless Settings]**, and then press **OK**.
↳ The current Wi-Fi settings are displayed.

Name your home theater

To easily identify your home theater on a network, name your home theater.

- 1 Turn on your TV, and switch to the correct source for the home theater.
- 2 Press **Home**.
- 3 Select **[Setup]**, and then press **OK**.
- 4 Select **[Network] > [Name your Product:]**, and then press **OK**.
- 5 Press the **Alphanumeric buttons** to enter the name.
- 6 Select **[Done]**, and then press **OK** to exit.

7 Use your home theater

This section helps you use the home theater to play media from a wide range of sources.

Before you start

- Make the necessary connections described in the quick start guide and the onscreen help.
- Complete the first-time setup. First-time setup appears when you turn on the home theater for the first time. If you do not complete the setup, you are prompted to complete it each time you turn on the home theater.
- Switch the TV to the correct source for the home theater.

Choose sound

This section helps you choose the ideal sound for your video or music.

- 1 Press **III SOUND SETTINGS**.
- 2 Press the **Navigation buttons** (left/right) to access the sound options on the display.

Sound settings	Description
AUTO VOLUME	Set a constant volume for the speakers. This option is best for TV audio input where the commercial signal level is usually louder than the content.
SOUND	Select a sound mode.
SURROUND	Select surround sound or stereo sound.
TREBLE	Change the high frequency output.
MID	Change the middle frequency output.
BASS	Change the low frequency output.
AUD SYNC	Delay the audio to match the video.

- 3 Select an option, and then press **OK**.
- 4 Press **↩ BACK** to exit.
If you do not press a button within a minute, the menu exits automatically.

Auto volume

Turn the auto volume on to keep the volume constant when you switch to a different source.

- 1 Press **III SOUND SETTINGS**.
- 2 Select **AUTO VOLUME**, and then press **OK**.
- 3 Press the **Navigation buttons** (up/down) to select **ON** or **OFF**.
- 4 Press **OK** to confirm.

Sound mode

Select predefined sound modes to suit your video or music.

- 1 Press **III SOUND SETTINGS**.
- 2 Select **SOUND**, and then press **OK**.
- 3 Press the **Navigation buttons** (up/down) to select a setting on the display:
 - **MOVIE**: Enjoy a cinematic audio experience, specially enhanced for movies.
 - **MUSIC**: Recreate the original recording environment of your music, in the studio or at a concert.
 - **ORIGINAL**: Experience the original sound of your movies and music, without added sound effects.
 - **NEWS**: Hear every word with optimized speech and clear vocals.
 - **GAMING**: Enjoy thrilling arcade sounds, ideal for action-packed video games or loud parties.
- 4 Press **OK** to confirm.

Surround sound mode

Experience an immersive audio experience with surround sound modes.

- 1 Press **III SOUND SETTINGS**.
- 2 Select **SURROUND**, and then press **OK**.
- 3 Press the **Navigation buttons** (up/down) to select a setting from your display:
 - **AUTO**: Surround sound based on the audio stream.
 - **SURROUND PLUS**: Enhanced surround mode with 5.1 channels, best cinematic experience.

- **MULTI-CH**: Immersive multi-channel sound for an enhanced movie experience.
- **STEREO**: Two-channel stereo sound. Ideal for listening to music.

- 4 Press **OK** to confirm.

Equalizer

Change the high frequency (treble), mid frequency (mid), and low frequency (bass) settings of the home theater.

- 1 Press **III SOUND SETTINGS**.
- 2 Select **TREBLE**, **MID** or **BASS**, and then press **OK**.
- 3 Press the **Navigation buttons** (up/down) to change the frequency.
- 4 Press **OK** to confirm.

Discs

Your home theater can play DVDs, VCDs, CDs, and Blu-ray discs. It can also play discs that you've made at home, such as CD-R discs of photos and music.

What you need

For audio or 2D video:

- Audio and video connection between your home theater and the TV.
- An audio or a video disc.

For 3D video:

- A 3D TV.
- An HDMI connection between your home theater and the TV.
- A Blu-ray 3D disc.
- A pair of 3D glasses that are compatible with your 3D TV.

Play discs

- 1 Insert a disc into the home theater.
↳ YourTV switches to the correct source and the disc plays automatically.
- 2 If the disc does not play automatically, press **DISC** or select **[play Disc]** in the home menu, and then press **OK**.
- 3 For a 3D video, put on your 3D glasses.
- 4 Press the play buttons to control play (see 'Play buttons' on page 22).

Note

- For a 3D video, during search forward or backward, and in some other play modes, the video displays in 2D. It returns to 3D display when you play normally again.

Tip

- To avoid flickering, change the brightness of the display (see 'Display panel' on page 38).

Play buttons

Button	Action
Navigation buttons	Navigate menus.
OK	Confirm an entry or selection.
▶ (Play)	Start or resume play.
⏏	Pause play.
■	Stop play.
⏮ / ⏭	Skip to the previous or next track, chapter or file.
⏪ / ⏩	Fast backwards or fast forwards. Press repeatedly to change the search speed.
Navigation buttons (up/down)	Rotate the picture clockwise or counter-clockwise.
SUBTITLE	Select subtitle language for video.
POP-UP MENU/DISC MENU	Access or exit the disc menu.
≡ OPTIONS	Access the advanced options when you play your audio, video, or media files (see 'Audio, video, and picture options' on page 25).

For video formats such as DivX and WMV:

- To stop play, press **■**.
- To resume the video from where you stopped, press **▶ (Play)**.
- To play the video from the start, press **OK**.

Play 3D discs in 2D mode

If you do not have a 3D TV, watch the 3D disc in 2D mode.

- 1 Press **⬆ (Home)**.
- 2 Select **[Setup] > [Video] > [Watch 3D video] > [Off]**.
- 3 Press **OK**.
- 4 Play your Blu-ray 3D disc.
↳ The 3D video is displayed in 2D.

Display menu for VCD and SVCD

Display the content menu on VCD and SVCD discs.

- 1 Press **⬆ (Home)**.
- 2 Select **[Setup] > [Preference]**, and then press **OK**.
- 3 Select **[VCD PBC] > [On]**, and then press **OK**.

Note

- To skip the content menu, select **[Off]**.

Synchronize picture and sound

If the audio and video are not synchronized, delay the audio to match the video.

- 1 Press **≡ SOUND SETTINGS**.
- 2 Select **AUD SYNC**, and then press **OK**.
- 3 Press the **Navigation buttons** (up/down) to synchronize the audio with the video.
- 4 Press **OK** to confirm.

Bonus View on Blu-ray

On Blu-ray discs that support the Bonus View, enjoy extra content, such as a director's commentary, while you watch the main feature. Bonus View is also known as picture-in-picture.

- 1 Enable Bonus View (picture-in-picture) in the Blu-ray disc menu.
- 2 While you play the main feature, press **≡** **OPTIONS**.
 - ↳ The options menu is displayed.
- 3 Select **[PIP Selection] > [PIP]**, and then press **OK**.
 - ↳ Depending on the video, PIP option [1] or [2] is displayed.
 - ↳ The picture-in-picture video is displayed in a small window.
- 4 Select **[2nd Audio Language]** or **[2nd Subtitle Language]**, and then press **OK**.
- 5 Select the language, and then press **OK**.

≡ Note

- To turn off Bonus View, press **≡ OPTIONS**, select **[PIP Selection] > [Off]**, and then press **OK**.

BD-Live on Blu-ray

On Blu-ray discs with BD-Live content, access additional features, such as internet chats with the director, the latest movie trailers, games, wallpaper, and ringtones.

What you need

- a Blu-ray disc with BD-Live content
- an internet connection
- a storage device:
 - a USB storage device, with at least 1 GB of memory, or
 - an SD memory card of type SDHC Class 6, with at least 8 GB of memory.

≡ Note

- BD-Live services vary from country to country, and depend on the disc.
- When you use BD-Live, data on the disc and home theater are accessed by the content provider.

Access BD-Live with a USB storage device


- 1 Connect your home theater to the home network and internet (see 'Computers and the Internet' on page 18).
- 2 Connect the USB storage device to the home theater.
 - The USB storage device is used to store the downloaded BD-Live content.
- 3 Press **⬆** (**Home**).
- 4 Select **[Setup]**, and then press **OK**.
- 5 Select **[Advanced] > [Local Storage] > [USB]**, and then press **OK**.
- 6 Select the BD-Live icon in the disc menu, and then press **OK**.
 - ↳ BD-Live starts to load. The loading time depends on the disc and your internet connection.
- 7 Press the **Navigation buttons** to navigate BD-Live, and then press **OK** to select an item.

Access BD-Live with an SD card

- 1 Connect your home theater to the home network and internet. (see 'Computers and the Internet' on page 18)
- 2 Insert the SD memory card into the **SD CARD** slot on your home theater.
 - ↳ The first time you insert an SD memory card, the card is formatted. After formatting, leave the card in the home theater (see 'Format an SD card' on page 33).
- 3 Press **⬆** (**Home**).
- 4 Select **[Setup]**, and then press **OK**.
- 5 Select **[Advanced] > [Local Storage] > [SD card]**, and then press **OK**.
- 6 Select the BD-Live icon in the disc menu, and then press **OK**.
 - ↳ BD-Live starts to load. The loading time depends on the disc and your internet connection.
- 7 Press the **Navigation buttons** to navigate BD-Live, and then press **OK** to select an item.


Clear memory

If your storage device does not have enough memory for the BD-Live content, clear the memory on the storage device.

- 1 Press  (**Home**).
- 2 Select **[Setup]**, and then press **OK**.
- 3 Select **[Advanced]** > **[Clear memory]**, and then press **OK**.
 - ↳ This clears the local memory and deletes the BD-Live files that you downloaded on your storage device.

Disable BD-Live

To restrict access to BD-Live, turn on the BD-Live security.

- 1 Press  (**Home**).
- 2 Select **[Setup]**, and then press **OK**.
- 3 Select **[Advanced]** > **[BD-Live security]** > **[On]**, and then press **OK**.
 - ↳ BD-Live access is restricted.

Note

- You cannot restrict internet access on commercial Blu-ray discs.

USB storage devices

Enjoy pictures, audio and video on a USB storage device.


What you need

- A USB storage device that is formatted for FAT or NTFS file systems, and complies with the Mass Storage Class.
- A USB extension cable, if the USB storage device does not fit into the connector.

Note

- You can use digital cameras connected by USB if they can play the files without using a special computer program.
- To play DivX DRM - protected files from a USB storage device, connect your home theater to a TV through an HDMI cable.

Play files

- 1 Connect the USB storage device to the home theater.
- 2 Press  (**Home**).
 - ↳ The home menu is displayed.
- 3 Select **[browse USB]**, and then press **OK**.
 - ↳ A content browser is displayed.
- 4 Select a file, and then press **OK**.
- 5 Press the playback buttons to control play (see 'Play buttons' on page 22).

DivX

Play DivX videos from :


- a disc (see 'Discs' on page 21),
- a USB storage device (see 'USB storage devices' on page 24), or
- an online video store (see 'Rent online video' on page 33).

Note

- To play DivX DRM protected files from a disc, a USB storage device, or an online video store, connect your home theater to a TV through an HDMI cable.

VOD code for DivX

Before you purchase DivX videos and play them on your home theater, register the home theater on www.divx.com using the DivX VOD code.

- 1 Press  (**Home**).
- 2 Select **[Setup]**, and then press **OK**.
- 3 Select **[Advanced]** > **[DivX® VOD Code]**, and then press **OK**.
 - ↳ The DivX VOD registration code for your home theater is displayed.

Subtitles

If your video has subtitles in multiple languages, select a subtitle language.

- 1 While playing video, press **SUBTITLE** to select a language.

Note

- Make sure that the subtitle file has the same name as the video file. For example, if the video file is named 'movie.avi', save the subtitle file as 'movie.srt' or 'movie.sub'.
- Your home theater can play subtitle files in the following formats: .srt, .sub, .txt, .ssa, .ass, smi, and .sami. These files do not appear in the file navigation menu.
- If the subtitles do not appear correctly, change the character set.

Subtitle character set

If the subtitles do not appear correctly, change the character set that supports the DivX subtitle.

- 1 Press **≡** **OPTIONS**.
↳ The options menu is displayed.
- 2 Press the **Navigation buttons** to select **[Character Set]**, and then press **OK**.
- 3 Select a character set.

Europe, India, and Russia

Character Set	Language
[Standard]	English, Albanian, Danish, Dutch, Finnish, French, Gaelic, German, Italian, Kurdish (Latin), Norwegian, Portuguese, Spanish, Swedish and Turkish
[Central Europe]	Albanian, Croat, Czech, Dutch, English, German, Hungarian, Irish, Polish, Romanian, Slovak, Slovene and Sorbian
[Cyrillic]	Bulgarian, Belorussian, English, Macedonian, Moldavian, Russian, Serbian and Ukrainian
[Greek]	Greek

Asia Pacific and China

Character Set	Language
[Standard]	Albanian, Danish, Dutch, English, Finnish, French, Gaelic, German, Italian, Kurdish (Latin), Norwegian, Portuguese, Spanish, Swedish, Turkish
[Chinese]	Simplified Chinese
[Chinese-Traditional]	Traditional Chinese
[Korean]	English and Korean

Audio, video, and picture options

Use advanced features when you play audio, video, or media files from a disc or a USB storage device.

Audio options

While playing audio, repeat an audio track, a disc, or a folder.

- 1 Press **≡** **OPTIONS** repeatedly to cycle through the following functions:
 - **RPT TRACK / RPT FILE**: Repeat the current track or file.
 - **RPT DISC / RPT FOLDER**: Repeat all the tracks on the disc or the folder.
 - **RPT RANDOM**: Play audio tracks in random order.
 - **RPT OFF**: Turn off the repeat mode.

Video options

While watching video, select options such as subtitles, audio language, time search, and picture settings. Depending on the video source, some options are not available.

- 1 Press **≡** **OPTIONS**.
↳ The video options menu is displayed.
- 2 Press the **Navigation buttons** and **OK** to select and change:
 - **[Audio Language]**: Select audio language for video.
 - **[Subtitle Language]**: Select subtitle language for video.
 - **[Subtitle Shift]**: Change the subtitle position on the screen.

- **[Info]:** Display information about what is playing.
- **[Character Set]:** Select a character set that supports the DivX subtitle.
- **[Time Search]:** Skip to a specific part of the video by entering the time of the scene.
- **[2nd Audio Language]:** Select the second audio language for Blu-ray video.
- **[2nd Subtitle Language]:** Select the second subtitle language for Blu-ray video.
- **[Titles]:** Select a specific title.
- **[Chapters]:** Select a specific chapter.
- **[Angle List]:** Select a different camera angle.
- **[Menus]:** Display the disc menu.
- **[PIP Selection]:** Display Picture-in-Picture window when playing a Blu-ray disc that supports the Bonus View.
- **[Zoom]:** Zoom into a video scene or picture. Press the **Navigation buttons** (left/right) to select a zoom factor.
- **[Repeat]:** Repeat a chapter or title.
- **[Repeat A-B]:** Mark two points within a chapter or track to repeat play, or turn off the repeat mode.
- **[Picture Settings]:** Select a predefined color setting.

Picture options

While viewing a picture, zoom into the picture, rotate it, add animation to a slideshow, and change the picture settings.

- 1 Press **≡ OPTIONS**.
↳ The picture options menu appears.
- 2 Press the **Navigation buttons** and **OK** to select and change the following settings:
 - **[Rotate +90]:** Rotate the picture 90 degree clockwise.
 - **[Rotate -90]:** Rotate the picture 90 degree counter-clockwise.
 - **[Zoom]:** Zoom into a video scene or picture. Press the **Navigation buttons** (left/right) to select a zoom factor.
 - **[Info]:** Display picture information.
 - **[Duration per slide]:** Select the display speed for each picture in a slide show.
 - **[Slide Animation]:** Select animation for the slide show.
 - **[Picture Settings]:** Select a predefined color setting.
 - **[Repeat]:** Repeat a selected folder.

Slideshows

While playing audio, access fun features such as picture and musical slideshows.

Picture slideshows

View a slideshow of your pictures stored in your disc or a USB storage device.

- 1 Select a picture from a disc or USB storage device, and then press **▶ (Play)**.
- 2 Press **≡ OPTIONS**.
- 3 Press **Navigation buttons** and **OK** to select the following settings:
 - **[Slide Animation]:** Select an animation for the slideshow.
 - **[Duration per slide]:** Select a display speed for each picture in a slideshow.
- 4 Press **■** to stop the slideshow.

Musical slideshows

Create a musical slideshow to play music and pictures at the same time.

- 1 Select a music track, and then press **OK**.
- 2 Press **↶ BACK**, and go to the picture folder.
- 3 Select a picture, and then press **▶ (Play)** to start the slideshow.
- 4 Press **■** to stop slideshow.
- 5 Press **■** again to stop music.

Radio

Listen to FM radio on your home theater, and store up to 40 radio stations.

What you need

- FM antenna.



Note

- AM and digital radio are not supported.
- If no stereo signal is detected, you are prompted to install the radio stations again.
- For the best reception, place the antenna away from the TV or other sources of radiation.

Tune stations

- 1 Connect the FM antenna as described in the quick start guide.
- 2 Press **⏮ SOURCE** repeatedly until **RADIO** appears on the display panel.
 - ↳ If you have already installed the radio stations, the last channel that you listened to is played.
 - ↳ If you have not installed any radio stations, the message **AUTO INSTALL... PRESS PLAY** appears on the display panel. Press **▶ (Play)**.
- 3 Press the following buttons to listen to or change radio stations:

Button	Action
◀ / ▶ or Alphanumeric buttons	Select a preset radio station.
Navigation buttons (left/right)	Search for a radio station.
Navigation buttons (up/down)	Fine tune a radio frequency.
■	Press to stop the installation of radio stations.
↶ BACK	Press and hold to erase the preset radio station.
≡ OPTIONS	Manual: Press once to access program mode, and press again to store the radio station. Automatic: Press and hold for three seconds to reinstall the radio stations.

Listen to radio

- 1 Press **⏮ SOURCE** repeatedly until **RADIO** appears on the display panel.
 - To listen to a preset station, press **◀** or **▶**.
 - To search for a radio station, and then listen, press **Navigation buttons (left/right)**.
- 2 Press **+/- (Volume)** to change the volume.

MP3 player

Connect your MP3 player to play your audio files or music.

What you need

- An MP3 player.
- A 3.5mm stereo audio cable.

Play music

- 1 Connect the MP3 player to the home theater as described in the quick start guide.
- 2 Press **⏮ SOURCE** repeatedly until **MUSIC I-LINK** appears on the display panel.
- 3 Press the buttons on the MP3 player to select and play audio files or music.

iPod or iPhone

When you connect a Philips dock for iPod/iPhone, you can use the home theater to play music, movies and photos from your iPod or iPhone.

What you need

- A Philips dock (Model: Philips DCK3061).
- A yellow composite cable.



Note

- Charge your iPod/iPhone on the dock while the home theater is in iPod mode.

Dock your iPod or iPhone

- 1 Move the slide at the bottom of the dock to **STANDARD**, and then connect the dock to the home theater.
- 2 Connect the yellow composite cable to the dock and TV.
- 3 Switch on the iPod or iPhone, and place it on the dock.

Play music

- 1 Dock your iPod or iPhone (see 'Dock your iPod or iPhone' on page 27).
- 2 Press **DOCK for iPod** on the home theater remote control.
- 3 Browse on the iPod or iPhone screen to select music tracks.
 - To view the playlist on your TV and use the home theater remote control to select a track, press **DOCK for iPod** again.

Play video and slideshows

- 1 Dock your iPod or iPhone (see 'Dock your iPod or iPhone' on page 27).
- 2 On the home theater remote control, press **⬆ (Home)**.
- 3 Select [**browse iPod**], and then press **OK**.
- 4 Switch the TV to the **AV/VIDEO** source (corresponding to the yellow composite cable).
 - ↳ The TV screen goes blank.
- 5 Browse on the iPod or iPhone screen to select videos or photos.
- 6 Press **▶ (Play)** to play the videos or photos.

Use smartphone

Turn your iPhone or Android smartphone into a virtual remote control, or use it to browse the contents of a disc or USB storage device on your home theater.

What you need

- An iPhone (iOS 3.1.3 and above) or Android (Android 2.1 and above) smartphone.
- A wired or wireless home network.

Before you start

- Connect your home theater to your home network (see 'Computers and the Internet' on page 18).
- Name your home theater (see 'Name your home theater' on page 20).
- Connect your smartphone to the same home network. For details, see your smartphone user manual.

Download MyRemote application

Download the Philips application, **MyRemote** (MyRemote) to your smartphone. This application is free.



Note

- Philips **MyRemote** is only available for iPhones and Android smartphones.

- 1 Tap the **App Store** (App Store) icon on the iPhone or the **Market** (Market) icon on the Android smartphone.
- 2 Search for 'Philips **MyRemote**' application.
- 3 Follow the instructions on your smartphone to download the application.
 - ↳ The **MyRemote** (MyRemote) icon is added to the home screen of your smartphone.

Access MyRemote application

Access the **MyRemote** application from your smartphone, and then identify your home theater on the home network.

- 1 Tap **MyRemote** (MyRemote) on your smartphone.
 - ↳ Your home theater and the other devices on the network are displayed on your smartphone. A browsing bar with **Devices**, **Remote**, and **Source** tabs is also displayed.
- 2 If your home theater is not found, check the network connection (see 'Computers and the Internet' on page 18).
Then, tap the **Devices** (Devices) tab on your smartphone to search again.
- 3 Tap the home theater icon on the smartphone.
 - ↳ The virtual remote control is displayed on the smartphone.
- 4 To exit the application, press the home button on your smartphone.

Use your smartphone as a remote control

The virtual remote control is displayed in multiple screens on the smartphone. To access the buttons, swipe the smartphone screen to the left or right. Only the control buttons that are relevant to the play mode are enabled on your smartphone. For example, if you play pictures, only the remote control buttons that are used to control the pictures are enabled. However, if you play a video, additional buttons, such as **SUBTITLE** and **TOP MENU**, are enabled on your smartphone.

- 1 Launch the application on your smartphone (see 'Access MyRemote application' on page 28).
 - ➔ Depending on the play mode, the relevant remote control buttons are enabled.
- 2 If the remote control buttons do not appear, tap the **Remote** (Remote) tab on your smartphone.
- 3 Swipe to the left or right screen to access more buttons.

Note

- Some control functions are not available on smartphones.

Browse a disc or USB storage device

Browse a disc or USB storage device from your smartphone, and play an audio, video, or multimedia file.

- 1 Launch the remote control application on your smartphone (see 'Access MyRemote application' on page 28).
- 2 Load a data disc or connect a USB storage device into your home theater.
- 3 On your smartphone, tap the **Source** (Source) tab, and then select **DISC** (DISC) or **USB** (USB).
 - ➔ The folders in your disc or USB storage device are displayed.
- 4 Select a folder to browse, and then select a file to play.
 - ➔ The relevant remote control buttons are enabled on your smartphone.
- 5 To access the remote control while you browse the contents, tap the **Remote** (Remote) tab on your smartphone.

Browse PC through DLNA

When you connect your home theater to your home network, you can enjoy music, photo, and video stored on a computer or other media server on the network.

What you need

- A wired or wireless home network, connected with a Universal Plug and Play (uPnP) router.
- A LAN cable to connect your home theater to your home network.
- A media server such as:
 - PC running Windows Media Player 11 or higher; or
 - Mac running Twonky Media Server.

Note

- For help to use other media servers, such as TVersion, see the web site of the media server.

Set up media server software

To enable media sharing, set up the media server software.

Before you start

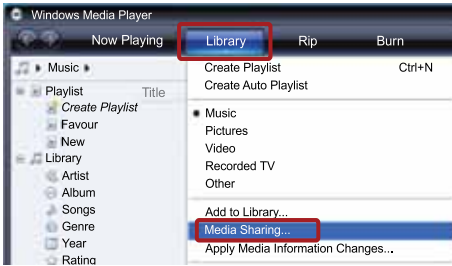
- Connect your home theater to your home network (see 'Computers and the Internet' on page 18).
- Connect your computer to the same home network.
- Make sure that your PC firewall allows you to run Windows Media Player programs.
- Switch on your computer and the router.

Microsoft Windows Media Player 11

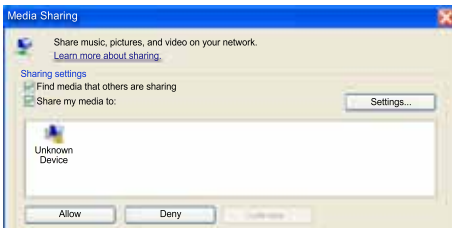
Note

- Depending on your version of Microsoft Windows, the screens might look different to the following screens.

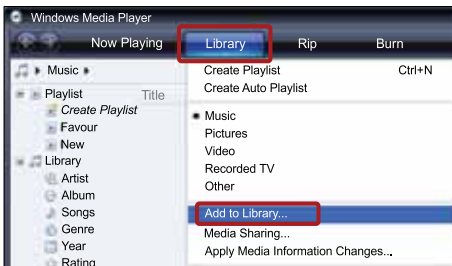
- 1 Start Windows Media Player on your PC.
- 2 Click the **Library** tab, and then select **Media Sharing**.



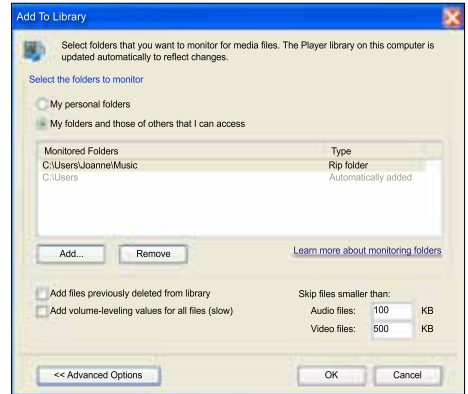
- 3 The first time you select **Media Sharing** on your PC, a pop-up screen appears. Check the **Share my media box** and click **OK**.
 ↳ The **Media Sharing** screen is displayed.
- 4 In the **Media Sharing** screen, make sure that you see a device marked as **Unknown Device**.



- ↳ If you don't see an unknown device after a minute or so, check that your PC firewall is not blocking the connection..
- 5 Select the unknown device and click **Allow**.
 ↳ A green tick appears next to the device.
- 6 By default, Windows Media Player shares from these folders: **My Music**, **My Pictures**, and **My Videos**. If your files are in other folders, select **Library > Add to Library**.



- ↳ The **Add to Library** screen is displayed.
- ↳ If necessary, select **Advanced options** to display a list of monitored folders.



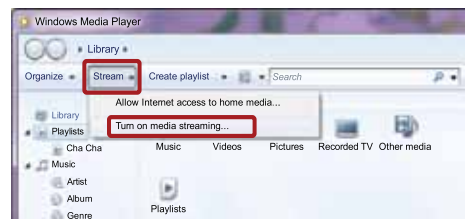
- 7 Select **My folders and those of others I can access**, and then click **Add**.
- 8 Follow the onscreen instructions to add the other folders that contain your media files.

Microsoft Windows Media Player 12

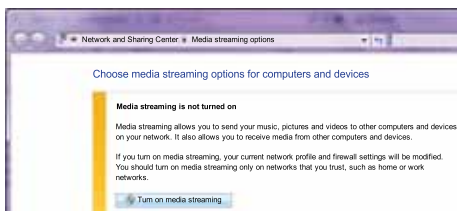
Note

- Depending on your version of Microsoft Windows, the screens might look different to the following screens.

- 1 Start Windows Media Player on your PC.
- 2 In Windows Media Player, click the **Stream** tab, and then select **Turn on media streaming**.
 ↳ The **Media streaming options** screen is displayed.



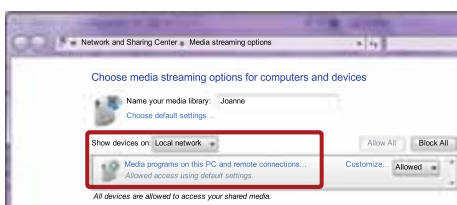
- 3 Click **Turn on media streaming**.



→ You return to Windows Media Player screen.

4 Click the **Stream** tab and select **More streaming options**.

→ The **Media streaming options** screen is displayed.



5 Make sure that you see a media program in the **Local network** screen.

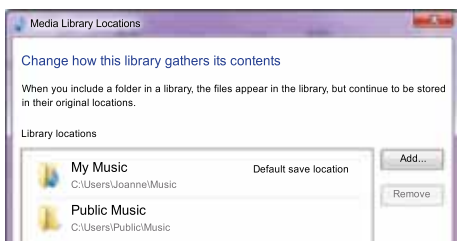
→ If you don't see a media program, check that your PC firewall is not blocking the connection.

6 Select the media program and click **Allowed**.

→ A green arrow appears next to the media program.

7 By default, Windows Media Player shares from these folders: **My Music**, **My Pictures**, and **My Videos**. If your files are in other folders, click the **Organize** tab and select **Manage libraries > Music**.

→ The **Music Library Locations** screen is displayed.



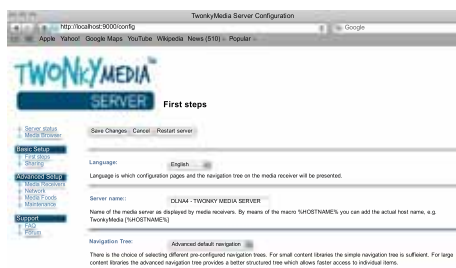
Follow the onscreen instructions to add the other folders that contain your media files.

Macintosh OS X Twonky Media (v4.4.2)

Note

- Depending on which version of the Mac operating system you use, your screens might look different to the following screens.

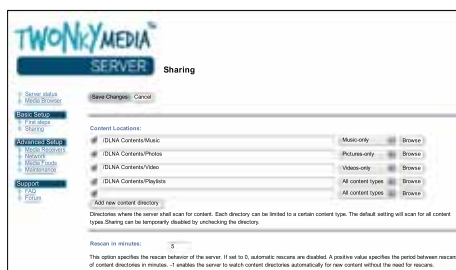
- Visit <http://www.twonkymedia.com> to purchase the software, or download a free 30-day trial to your Macintosh.
- Start Twonky Media on the Macintosh.
- In the Twonky Media Server screen, select **Basic Setup** and **First Steps**.
→ The **First steps** screen is displayed.



4 Type a name for your media server, and then click **Save changes**.

5 Back in the Twonky Media screen, select **Basic Setup** and **Sharing**.

→ The **Sharing** screen is displayed.



6 Browse and select folders to share, and then select **Save Changes**.

→ Your Macintosh rescans the folders automatically so that they are ready to share.

Play files from your PC

Note

- Before you play multimedia content from the computer, make sure that the home theater is connected to the home network, and the media server software is properly set up.

- 1 Switch your TV to the correct HDMI source for your home theater.
- 2 Press **⬆ (Home)**.
↳ The home menu is displayed.
- 3 Select **[browse PC]**, and then press **OK**.
↳ A content browser is displayed.
- 4 Select a file, and then press **OK**.
- 5 Press the playback buttons to control play.

Browse Net TV

Not available in China

Use Net TV to access variety of internet applications and specially adapted internet websites.

For interactive discussions on Net TV services, visit the Net TV forum at www.supportforum.philips.com

Note

- Koninklijke Philips Electronics N.V. bears no responsibility for content provided by Net TV service providers.

Access Net TV

- 1 Connect your home theater to a home network and the Internet (see 'Computers and the Internet' on page 18).
- 2 Press **⬆ (Home)**.
↳ The home menu is displayed.
- 3 Select **[browse Net TV]**, and then press **OK**.
↳ The Net TV home page is displayed. The first time you access Net TV, follow the onscreen instructions to agree to the terms and conditions, and then register with Club Philips.

- 4 Press the **Navigation buttons** to select **App Gallery** (App Gallery) or **Internet** (Internet), and then press **OK**.
 - Access **App Gallery** (App Gallery) to add more Apps to your screen.
 - Access **Internet** (Internet) to browse the Internet.
- 5 Press **↩ BACK** to return to the previous page, or press **⬆ (Home)** to exit.

Browse internet

- 1 Press the **Navigation buttons** to select **Internet** (Internet) from the Net TV home page, and then press **OK**.
- 2 Select the address bar, and then press the **Alphanumeric buttons** to enter the URL of the website.
 - To clear the text in the address bar, press **↩ BACK**.
 - To display the onscreen keyboard, follow the instructions on the screen.
- 3 After you enter the URL, press the **Navigation buttons** to select the arrow next to the address bar, and then press **OK** to confirm.
- 4 While browsing internet, press **≡ OPTIONS** to access the address bar, shortcut keys and other advanced options.
- 5 Press **↩ BACK** to return to the previous page, or press **⬆ (Home)** to exit.

Clear browsing history

Clear the browsing history to remove passwords, cookies, and browsing data from your home theater.

- 1 Press **⬆ (Home)**.
- 2 Select **[Setup]**, and then press **OK**.
- 3 Select **[Network] > [Clear Net TV Memory]**, and then press **OK**.

Rent online video

Not available in China

Rent videos from online stores, through your home theater. You can watch them right away or later.

Many online video stores offer a huge choice of video, with different rental prices, periods, and conditions. For some stores, you must create an account before you can rent.

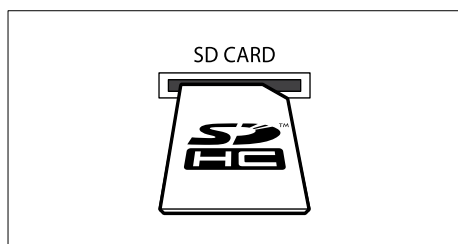
What you need

- A high-speed internet connection to the home theater.
- An HDMI connection between your home theater and TV.
- An SD memory card of type SDHC Class 6, with at least 8 GB of memory.

Format an SD card

Before you download any online video or BD-Live content, your SD card must be in the SD card slot of your home theater, and formatted.

- 1 Switch your TV to the correct HDMI source for your home theater.
- 2 Insert the SD memory card into the **SD CARD** slot on your home theater.



- 3 Follow the onscreen instructions to format the card.
 - ↳ Any content on the card is erased during formatting.
- 4 After formatting, leave the card in the **SD CARD** slot.

Rent and play online video

- 1 Connect your home theater to the home network and internet (see 'Computers and the Internet' on page 18).
- 2 Press **⬆ (Home)**.
- 3 Select **[browse Net TV]**, and then press **OK**.
 - ↳ The online services available in your country are displayed.
- 4 Press the **Navigation buttons** to go to a video store, and then press **OK**.
- 5 If prompted, follow the video store instructions to register or log in to an account.
 - ↳ You see an option to rent videos.
 - ↳ If you have rented videos and are still within the rental period, you also see an option to watch the videos.
- 6 Follow the video store instructions to rent or watch a video.
 - The video is downloaded to your SD memory card. You can watch it now or at any time within the rental period.
 - When you have downloaded a video to your card, you can watch it only on your home theater. You can't move the card and watch it on another device.
 - If you move the card and format it in another device, your downloaded video is erased. Download your video again before you watch.
- 7 Press the play buttons on your remote control to play, pause, search, or stop the video.

Multiview

You can watch two video sources side by side on some of the Philips TVs. The sources can be:

- video from your home theater,
- TV broadcasts, and
- Net TV.

For information about how to set up multiview, see your TV user manual.

EasyLink

The home theater supports Philips EasyLink, which uses the HDMI-CEC (Consumer Electronics Control) protocol. EasyLink-compliant devices that are connected through HDMI can be controlled by a single remote control.

Philips does not guarantee 100% interoperability with all HDMI-CEC devices.

What you need

- HDMI-CEC compliant devices.
- An HDMI connection between the connected devices.

Switch on

- 1 On the TV and other connected devices, turn on the HDMI-CEC operations. For details, see the manual of the TV or other devices.
- 2 Press **⬆** (Home).
- 3 Select **[Setup]**, and then press **OK**.
- 4 Select **[EasyLink] > [EasyLink]**, and then press **OK**.
- 5 Select **[On]**, and then press **OK**.

Control devices

Control the home theater and the other connected HDMI-CEC compliant devices with a single remote control.

One-touch play

If you enable One-touch play, the TV automatically switches to the correct channel when you play a disc in your home theater.

One-touch standby

When you press and hold **⏻** (Standby) on the remote control, the home theater and all the connected HDMI-CEC devices (that support one-touch standby) switch to the standby mode.

If one-touch standby is enabled on your home theater, you can switch to standby with the remote control of the TV or other HDMI-CEC devices.

System Audio Control

When you play a device that has its audio output routed to the home theater, the home theater switches to the corresponding audio source automatically.

To use one-touch audio, turn on System Audio Control and follow the instructions on the TV to map connected devices to the audio input connectors of the home theater.

Audio Input Mapping

When you connect a new device to your home theater, map the device to the audio input connector (see 'Play audio from home theater' on page 35).

Play audio from home theater

Play the audio from a connected device through your home theater.

- 1 Press **⬆** (Home).
- 2 Select **[Setup]**, and then press **OK**.
- 3 Select **[EasyLink]** > **[System Audio Control]** > **[On]**, and then press **OK**.
 - To play the audio from the TV speakers, select **[Off]**, and skip the following steps.
- 4 Select **[EasyLink]** > **[Audio Input Mapping]**, and then press **OK**.
- 5 Follow the instructions on the TV to map the audio of the connected device to the audio inputs on your home theater.



Note

- If you connect your home theater to the TV through an HDMI ARC connection, make sure that the TV audio is mapped to the ARC input on your home theater.

8 Change settings

This section helps you to change the settings of your home theater.



Caution

- Most of the settings are already configured with the best value for your home theater. Unless you have a reason to change a setting, it is best to leave it at the default value.



Note

- You cannot change a setting that is grayed out.
- To return to the previous menu, press **⬅** **BACK**. To exit the menu, press **⬆** (Home).

Picture

Change the picture settings to suit your preferences.



Note

- The best setting is automatically selected for the TV. If you change the setting, make sure that the TV supports the new settings.

Picture settings and format

- 1 Press **⬆** (Home).
- 2 Select **[Setup]**, and then press **OK**.
- 3 Select **[Video]**, and then press **OK**.
- 4 Change the following settings, and then press **OK**:
 - **[TV Display]**: Picture format.
 - **[Picture Settings]**: Predefined color settings.

Picture color

Deep Color recreates the natural world on your TV screen and displays vivid images in over a billion of colors.

If your TV supports Deep Color and is connected to your home theater through an HDMI cable, you can change the Deep Color.

- 1 Press **▲** (Home).
- 2 Select **[Setup]**, and then press **OK**.
- 3 Select **[Video]** > **[HDMI Deep Color]**, and then press **OK**.
- 4 Select the following options, and then press **OK**:
 - **[Auto]**: Automatically select HDMI Deep Color.
 - **[On]**: View vivid images.
 - **[Off]**: Display standard 24-bit color.

Picture resolution

For HDMI video settings, connect your home theater to the TV through an HDMI cable.

- 1 Press **▲** (Home).
- 2 Select **[Setup]**, and then press **OK**.
- 3 Select **[Video]** > **[HDMI Video]**, and then press **OK**.
- 4 Change the HDMI resolution setting, and then press **OK**.

Blu-ray 3D video

To play 3D video, connect your home theater to a 3D TV through an HDMI cable.

- 1 Press **▲** (Home).
- 2 Select **[Setup]**, and then press **OK**.
- 3 Select **[Video]** > **[Watch 3D video]** > **[Auto]**, and then press **OK**.

Subtitle position

Automatically change the position of the subtitles to fit your TV screen.

- 1 Press **▲** (Home).
- 2 Select **[Setup]**, and then press **OK**.
- 3 Select **[Preference]** > **[Auto Subtitle Shift]** > **[On]**, and then press **OK**.

Sound

Change the sound settings to suit your preference.

HDMI audio

To hear an HDMI audio output from your TV, connect your home theater to the TV through an HDMI cable.

- 1 Press **▲** (Home).
- 2 Select **[Setup]**, and then press **OK**.
- 3 Select **[Audio]** > **[HDMI Audio]**, and then press **OK**.
- 4 Select the following options, and then press **OK**:
 - **[Bitstream]**: Enable bitstream output over HDMI.
 - **[Auto]**: Automatically select the best supported audio format.
 - **[Off]**: Disable audio from the TV.

Audio post processing

To select a predefined sound mode, enable audio post processing at the speaker (see 'Sound mode' on page 21).

- 1 Press **▲** (Home).
- 2 Select **[Setup]**, and then press **OK**.
- 3 Select **[Advanced]** > **[Enhanced Audio]** > **[On]**, and then press **OK**.

Note

- To play the original audio of the disc, select **[Off]**.

Night mode

For quiet listening, decrease the volume of loud sounds when you play discs. Night mode is only available for Dolby-encoded DVD and Blu-ray discs.

- 1 Press **▲** (Home).
- 2 Select **[Setup]**, and then press **OK**.
- 3 Select **[Audio]** > **[Night Mode]** > **[On]**, and then press **OK**.

Restore sound mode settings

Restore the equalizer settings of all the sound modes to the default values.

- 1 Press **⬆** (Home).
- 2 Select **[Setup]**, and then press **OK**.
- 3 Select **[Audio]** > **[Default sound settings]**, and then press **OK**.

Language

Select a language for the home menu, audio, and subtitles.

Home menu

- 1 Press **⬆** (Home).
- 2 Select **[Setup]**, and then press **OK**.
- 3 Select **[Preference]** > **[Menu language]**, and then press **OK**.
- 4 Select a menu language, and then press **OK**.

Disc audio

- 1 Press **⬆** (Home).
- 2 Select **[Setup]**, and then press **OK**.
- 3 Select **[Preference]** > **[Audio]**, and then press **OK**.
- 4 Select an audio language for discs, and then press **OK**.

Note

- If your preferred disc language is not available, select **[Others]** from the list, and enter the 4-digit language code found at the end of this user manual.
- If you select a language that is not available on a disc, the home theater uses the default language of the disc.

Disc subtitle

- 1 Press **⬆** (Home).
- 2 Select **[Setup]**, and then press **OK**.
- 3 Select **[Preference]** > **[Subtitle]**, and then press **OK**.
- 4 Select a subtitle language for discs, and then press **OK**.

Disc menu

- 1 Press **⬆** (Home).
- 2 Select **[Setup]**, and then press **OK**.
- 3 Select **[Preference]** > **[Disc Menu]**, and then press **OK**.
- 4 Select a menu language for discs, and then press **OK**.



Note

- If your preferred disc language is not available, select **[Others]** from the list, and enter the 4-digit language code found at the the end of this user manual.
- If you select a language that is not available on a disc, the home theater uses the default language of the disc.

Parental control

Restrict access to discs that are recorded with ratings.

Password

You can set or change your password to play a restricted disc.

- 1 Press **⬆** (Home).
- 2 Select **[Setup]**, and then press **OK**.
- 3 Select **[Preference]** > **[Change Password]**, and then press **OK**.
 ➞ A change password menu is displayed.
- 4 Follow the instructions on the TV to set or change password.
 - If you do not have a password or you have forgotten, enter **0000**.
- 5 Press **OK**.

Ratings

Some discs are recorded with ratings according to age. You can set up your home theater to play only discs with an age rating lower than your child's age.

- 1 Press **▲** (Home).
 - 2 Select **[Setup]**, and then press **OK**.
 - 3 Select **[Preference] > [Parental Control]**, and then press **OK**.
 - ↳ A message prompts you to enter the password.
 - 4 Enter the password with the **Numeric buttons**.
 - 5 Select an age rating, and then press **OK**.
 - To play all discs irrespective of the rating, select level **8** or **[Off]**.
-

Energy saving

Save energy by changing the following settings.

Auto standby

When playing a disc or a USB storage device, automatically switch your home theater to standby if:

- it is in pause or stop mode, and
 - no button is pressed for 30 minutes.
- 1 Press **▲** (Home).
 - 2 Select **[Setup]**, and then press **OK**.
 - 3 Select **[Preference] > [Auto Standby] > [On]**, and then press **OK**.
-

Sleep timer

Set timers to switch the home theater to standby after a specified time.

- 1 Press **▲** (Home).
- 2 Select **[Setup]**, and then press **OK**.
- 3 Select **[Preference] > [Sleep Timer]**, and then press **OK**.
- 4 Select the duration of the sleep timer.
 - ↳ The sleep timer can be set up to 60 minutes. If the sleep timer is set to **[Off]**, it switches off.
- 5 Press **OK** to activate.
 - ↳ The home theater switches to standby after the specified time.

Screen saver

Automatically switch your home theater to screen saver mode if:

- it is in pause or stop mode, and
 - no button is pressed for 10 minutes.
- 1 Press **▲** (Home).
 - 2 Select **[Setup]**, and then press **OK**.
 - 3 Select **[Preference] > [Screen Saver] > [On]**, and then press **OK**.
-

Display panel

Change the brightness of the home theater display panel.

- 1 Press **▲** (Home).
 - 2 Select **[Setup]**, and then press **OK**.
 - 3 Select **[Preference] > [Display Panel]**, and then press **OK**.
 - 4 Select the brightness, and then press **OK**.
-

Apply factory settings

Reset your home theater to the default settings. You cannot reset the parental control settings.

- 1 Press **▲** (Home).
- 2 Select **[Setup]**, and then press **OK**.
- 3 Select **[Advanced] > [Restore default settings]**, and then press **OK**.
- 4 Select **[OK]**, and then press **OK**.

9 Update software

To continue to get the best features and support for your home theater, update the software regularly. Compare the version of your current software with the latest version on www.philips.com/support.

Check software version

- 1 Press **⬆** (Home).
- 2 Select **[Setup]**, and then press **OK**.
- 3 Select **[Advanced]** > **[Version Info.]**, and then press **OK**.
↳ The software version is displayed.

Update software through the Internet

- 1 Connect your home theater to the network. Use a
 - wired network connection (see 'Set up the wired network' on page 19), or
 - wireless network connection (see 'Set up the wireless network' on page 19).
- 2 Press **⬆** (Home).
- 3 Select **[Setup]**, and then press **OK**.
- 4 Select **[Advanced]** > **[Software Update]** > **[Network]**.
↳ If an upgrade media is detected, you are prompted to start or cancel the update.
- 5 Follow the instruction on the TV to confirm the update.
↳ When the software update is complete, the home theater automatically switches off and restarts. If it does not, disconnect the power cord for a few seconds and then reconnect it.



Note

- If the home theater cannot connect to the Philips server, press **⬆** (Home), and then select **[Setup]** > **[Network]** > **[Network Installation]** to set up the network.

Update software through USB

What you need

- A USB flash drive, with at least 75MB of memory. The USB flash drive must be FAT or NTFS formatted. Do not use a USB hard drive.
- A computer with Internet access.
- An archive utility that supports the ZIP file format (for example, WinZip® for Microsoft® Windows® or StuffIt® for Macintosh®).

Step 1: Download the latest software

- 1 Connect a USB flash drive to your computer.
- 2 In your web browser, go to www.philips.com/support.
- 3 At the Philips Support website, find your product and locate the **Software and drivers**.
↳ The software update is available as a zip file.
- 4 Save the zip file in the root directory of your USB flash drive.
- 5 Use the archive utility to extract the software update file in the root directory of the USB flash drive.
↳ The files are extracted under the **UPG_ALL** folder of your USB flash drive.
- 6 Disconnect the USB flash drive from your computer.

Step 2: Update the software

Caution

- Before you connect the USB flash drive to your home theater, make sure that there is no disc in the disc compartment, and the disc compartment is closed.

- 1 Connect the USB flash drive to your home theater.
- 2 Switch your TV to the correct source for your home theater.
- 3 Press **⬆** (**Home**), and then select **[Setup]**.
- 4 Select **[Advanced]** > **[Software Update]** > **[USB]**.
- 5 Follow the instructions on the TV to confirm the update.
↳ When the software update is complete, the home theater automatically switches off and restarts. If it does not, disconnect the power cord for a few seconds, and then reconnect it.

Note

- When the software update is in progress, do not turn off the power or remove the USB flash drive.

10 Product specifications

Note

- Specifications and design are subject to change without notice.

Region codes

The type plate on the back or bottom of the home theater shows which regions it supports.

Country	DVD	BD
Europe, United Kingdom		
Asia Pacific, Taiwan, Korea		
Latin America		
Australia, New Zealand		
Russia, India		
China		

Media formats

- AVCHD, BD, BD-R/ BD-RE, BD-Video, DVD-Video, DVD+R/+RW, DVD-R/-RW, DVD+R/-R DL, CD-R/CD-RW, Audio CD, Video CD/SVCD, Picture files, MP3 media, WMA media, DivX Plus HD media, USB storage device

File formats

- Audio: .aac, .mka, .mp3, .wma, .wav, .mp4, .m4a
- Video: .avi, .divx, .mp4, .mkv, .asf, .wmv, .mpg, .mpeg,
- Picture: .jpg, .jpeg, .gif, .png

Audio formats

Your home theater supports the following audio files.

Extension	Container	Audio codec	Bit rate
.mp3	MP3	MP3	32 kbps ~ 320 kbps
.wma	ASF	WMA	64 kbps ~ 160 kbps
.aac	AAC	AAC, HE-AAC	192 kbps
.wav	WAV	PCM	1.4 Mbps
.m4a	MKV	AAC	192 kbps
.mka	MKA	PCM	27.648 Mbps
.mka	MKA	Dolby Digital	640 kbps
.mka	MKA	DTS core	1.54 Mbps
.mka	MKA	MPEG	912 kbps
.mka	MKA	MP3	32 kbps ~ 320 kbps
.mka	MKA	WMA	64 kbps ~ 160 kbps
.mka	MKA	AAC, HE-AAC	192 kbps

Video formats

If you have a high definition TV, your home theater allows you to play your video files with:

- Resolution: 1920 x 1080 pixels at
- Frame rate: 6 ~ 30 frames per second.

.avi files in AVI container

Audio codec	Video codec	Bit rate
PCM, Dolby Digital, DTS core, MP3, WMA	DivX 3.11, DivX 4.x, DivX 5.x, DivX 6.x	10 Mbps max
	MPEG 1, MPEG 2	20 Mbps (peak 40 Mbps)
	MPEG 4 ASP	10 Mbps max
	H.264/AVC HP@4.1/4.0; MP@3.2/3.1/3.0	20 Mbps (peak 40 Mbps)
	WMV9	20 Mbps

.divx files in AVI container

Audio codec	Video codec	Bit rate
PCM, Dolby Digital, MP3, WMA	DivX 3.11, DivX 4.x, DivX 5.x, DivX 6.x	10 Mbps max
	MPEG 1, MPEG 2	20 Mbps (peak 40 Mbps)
	MPEG 4 ASP	10 Mbps max

.mp4 or .m4v files in MP4 container

Audio codec	Video codec	Bit rate
Dolby Digital, MPEG, MP3, AAC, HE-AAC	MPEG 1, MPEG 2	20 Mbps (peak 40 Mbps)
	MPEG 4 ASP	10 Mbps max
	H.264/AVC HP@4.1/4.0; MP@3.2/3.1/3.0	20 Mbps (peak 40 Mbps)

.mkv files in MKV container

Audio codec	Video codec	Bit rate
PCM, Dolby Digital, DTS core, MPEG, MP3, WMA, AAC, HE-AAC	MPEG 1, MPEG 2	20 Mbps (peak 40 Mbps)
	MPEG 4 ASP	10 Mbps max
	H.264/AVC HP@4.1/4.0; MP@3.2/3.1/3.0	20 Mbps (peak 40 Mbps)
	WMV9	20 Mbps

.asf and .wmv files in ASF container

Audio codec	Video codec	Bit rate
PCM, Dolby Digital, MP3, WMA	MPEG 4 ASP	10 Mbps max
	H.264/AVC HP@4.1/4.0; MP@3.2/3.1/3.0	20 Mbps (peak 40 Mbps)
	WMV9	20 Mbps

.mpg and .mpeg files in PS container

Audio codec	Video codec	Bit rate
PCM, DTS core, MPEG, MP3	MPEG 1, MPEG 2	20 Mbps (peak 40 Mbps)
	MPEG 1, MPEG 2	20 Mbps (peak 40 Mbps)

Amplifier

- Total output power:
 - Europe and Asia: 1000W RMS (30% THD)
 - Latin America: 800W RMS (+/- 0.5 dB, 10% THD)
- Frequency response: 20 Hz-20 kHz / ± 3 dB
- Signal-to-noise ratio: > 65 dB (CCIR) / (A-weighted)
- Input sensitivity:
 - AUX1: 1000 mV
 - Music iLink: 500 mV

Video

- Signal system: PAL / NTSC
- HDMI output: 480i/576i, 480p/576p, 720p, 1080i, 1080p, 1080p24

Audio

- S/PDIF Digital audio input:
 - Coaxial: IEC 60958-3
 - Optical: TOSLINK
- Sampling frequency:
 - MP3: 32 kHz, 44.1 kHz, 48 kHz
 - WMA: 44.1 kHz, 48 kHz
- Constant bit rate:
 - MP3: 32 kbps - 320 kbps
 - WMA: 48 kbps - 192 kbps

Radio

- Tuning range:
 - Europe/China: FM 87.5-108 MHz (50 kHz)
 - Asia Pacific/Russia/Latin America: FM 87.5-108 MHz (50/100 kHz)
- Signal-to-noise ratio: FM 50 dB
- Frequency response: FM 180 Hz-12.5 kHz / ± 3 dB

USB

- Compatibility: Hi-Speed USB (2.0)
- Class support: USB Mass Storage Class (MSC)
- File system: FAT16, FAT32, NTFS
- Maximum memory support: < 160 GB

Main unit

- Power supply:
 - Europe/China/Russia/India: 220-240 V~, 50 Hz
 - Latin America/Asia Pacific: 110-127 V/220-240 V~, 50-60 Hz
- Power consumption: 105 W
- Standby power consumption: ≤ 0.5 W
- Dimensions (WxHxD): 435 x 63.5 x 342.5 mm
- Weight: 4.0 kg

Subwoofer

- Output power: 230W
- Impedance: 3 ohm
- Speaker drivers: 165 mm (6.5") woofer
- Dimensions (WxHxD): 196 x 395 x 342 mm
- Weight: 4.9 kg
- Cable length: 3 m

Speakers

Center speaker:

- Output power: 230W
- System: full range satellite
- Speaker impedance: 3 ohm
- Speaker drivers: 1 x 25.4 mm (1") tweeter + 2 x 76.2 mm (3") woofer
- Dimensions (WxHxD): 280 x 95 x 92 mm
- Weight: 1.4 kg
- Cable length: 2 m

Front/Rear speaker:

- Output power: 4 x 135W
- Speaker impedance: 5 ohm
- Speaker drivers: 1 x 25.4 mm (1") tweeter + 2 x 76.2 mm (3") woofer
- Dimensions (WxHxD): 97 x 301 x 120 mm
- Weight: 1.5kg
- Cable length (front speakers): 4 m
- Cable length (rear speakers): 10 m

Dock for iPod/iPhone

- Dimensions (HxD): 34.5 x 104 mm
- Weight: 135 g

Remote control batteries

- 2 x AAA-R03-1.5 V

Laser

- Laser Type (Diode): InGaN/AlGaIn (BD), AlGaInP (DVD/CD)
- Wave length: 405 +7 nm/-7 nm (BD), 655 +10 nm/-10 nm (DVD), 790 +10 nm/-20 nm (CD)
- Output power (Max. ratings): 20 mW (BD), 6 mW (DVD), 7 mW (CD)

11 Troubleshooting



Warning

- Risk of electric shock. Never remove the casing of the product.

To keep the warranty valid, never try to repair the product yourself.

If you have problems using this product, check the following points before you request service. If you still have a problem, register your product and get support at www.philips.com/welcome.

Main unit

The buttons on the home theater do not work.

- Disconnect the home theater from the power supply for a few minutes, then reconnect.

Picture

No picture.

- Make sure that the TV is switched to the correct source for the home theater.

No picture on a TV connected through HDMI.

- Make sure that you use a High Speed HDMI cable to connect the home theater and TV. Some Standard HDMI cables do not display properly for some images, 3D video, or Deep Color.
- Make sure that the HDMI cable is not faulty. If it is faulty, replace it with a new cable.
- Press **⬆** (Home) and then **731** on the remote control to restore the default picture resolution.
- Change the HDMI video setting, or wait for 10 seconds for auto recovery (see 'Picture resolution' on page 36).

Disc does not play high-definition video.

- Make sure that the disc contains high-definition video.
- Make sure that the TV supports high-definition video.
- Use an HDMI cable to connect to the TV.

Sound

No sound from home theater speakers.

- Connect the audio cable from your home theater to your TV or other devices. You do not need a separate audio connection when:
 - the home theater and TV are connected through an **HDMI ARC** connection, or
 - a device is connected to the **HDMI IN** connector on your home theater.
- Set up the audio for the connected device (see 'Set up audio for connected devices' on page 18).
- Reset your home theater to its factory settings (see 'Apply factory settings' on page 38), and then switch it off and switch on again.
- On your home theater, press **SOURCE** repeatedly to select the correct audio input.

Distorted sound or echo.

- If you play audio from the TV through the home theater, make sure that the TV is muted.

Audio and video are not synchronized.

- 1) Press **III SOUND SETTINGS**. 2) Press the **Navigation buttons** (left/right) to select **AUD SYNC**, and then press **OK**. 3) Press the **Navigation buttons** (up/down) to synchronize the audio with the video.

Cannot calibrate the speakers with the calibration microphone.

- Make sure that the speakers, subwoofer, and calibration microphone are connected as described in the Quick start guide.
- Move the speakers to a different position, and then calibrate again.
- Follow all the steps for auto calibration (see 'Automatic setup' on page 13).
- If you cannot calibrate the speakers automatically, or you are not happy with the automatic settings, calibrate the speakers manually (see 'Manual setup' on page 13).

Play

Cannot play a disc.

- Clean the disc.
- Make sure that the home theater supports the type of disc (see 'Media formats' on page 40).
- Make sure that the home theater supports the region code of the disc (see 'Region codes' on page 40).
- If the disc is a DVD±RW or DVD±R disc, make sure that it is finalized.

Cannot play a DivX file.

- Make sure that the DivX file is encoded according to the 'Home Theater Profile' with the DivX encoder.
- Make sure that the DivX file is complete.

DivX subtitles do not display correctly.

- Make sure that the subtitle file name is the same as the movie file name (see 'Subtitles' on page 25).
- Select the correct character set: 1) Press **≡ OPTIONS**. 2) Select **[Character Set]**. 3) Select the supported character set. 4) Press **OK**.

Cannot read the contents of a USB storage device.

- Make sure that the format of the USB storage device is compatible with the home theater.
- Make sure that the file system on the USB storage device is supported by the home theater.

'No entry' or 'x' sign appears on the TV.

- The operation is not possible.

EasyLink does not work.

- Make sure that the home theater is connected to a Philips brand EasyLink TV, and the EasyLink option is on (see 'EasyLink' on page 34).

When you switch on the TV, the home theater automatically switches on.

- This behavior is normal when you are using Philips EasyLink (HDMI-CEC). To make the home theater work independently, switch off EasyLink.

Cannot access BD-Live.

- Make sure that the home theater is connected to the network. Use a wired network connection (see 'Wired connection' on page 18) or wireless network connection (see 'Wireless connection' on page 19).
- Make sure that the network is set up. Use a wired network installation (see 'Set up the wired network' on page 19) or wireless network installation (see 'Wireless connection' on page 19).
- Make sure that the Blu-ray disc supports BD-Live.
- Clear memory storage (see 'Clear memory' on page 24).

Cannot play video or photos from an iPod or iPhone on the TV.

- Browse and select videos and photos from the iPod or iPhone screen, and play them on your TV.
- Make sure that the iPod or iPhone software has not been tampered with or illegally modified.

Cannot view pictures from an iPod or iPhone on the TV.

- Connect a yellow composite cable to the iPod dock and the TV.
- Switch the TV to the **AV/VIDEO** source (corresponding to the yellow composite cable).
- Press the play button on the iPod or iPhone to start a slideshow.
- Make sure that the iPod or iPhone software has not been tampered with or illegally modified.

Play 3D video in 2D mode.

- Make sure that your home theater is connected to a 3D TV through an HDMI cable.
- Make sure that the disc is a Blu-ray 3D disc, and the Blu-ray 3D video option is on (see 'Blu-ray 3D video' on page 36).

TV screen is black when you play a Blu-ray 3D video or a DivX copy protected video.

- Make sure that the home theater is connected to the TV through an HDMI cable.
- Switch to the correct HDMI source on the TV.

Cannot download video from an online video store.

- Make sure that your home theater is connected to the TV through an HDMI cable.
- Make sure that the SD card is formatted, has enough memory to download the video, and is of type SDHC Class 6.
- Make sure that you have paid for the video, and it is within the rental period.
- Make sure that the network connection is good. Use a wired network connection (see 'Wired connection' on page 18) or a wireless network connection (see 'Wireless connection' on page 19).
- Visit the video store website for more information.

Network**Wireless network distorted or not found.**

- Make sure that the wireless network is not disturbed by microwave ovens, DECT phones, or other neighboring Wi-Fi devices.
- Place the wireless router and the home theater within five meters of each other.
- Use a USB extension cable to connect the Wi-Fi dongle to the home theater.
- If the wireless network does not work properly, try a wired network installation (see 'Set up the wired network' on page 19).

12 Index

2

2D video	22
----------	----

3

3D	
3D disc in 2D mode	22
3D safety	9

A

advanced	
BD-Live security	24
enhanced audio	36
restore default settings	38
software update	39
software version	39
amplifier	42
audio	
calibration	12
HDMI audio	36
night mode	36
post processing	36
predefined modes	21
quality	17
settings	36
source	18
specifications	42
audio formats	41
audio input mapping	35
audio language	37
audio options	25
auto standby	38

B

bass	21
BD-Live	
BD-Live (SD card)	23
BD-Live (USB)	23
clear memory	24
disable	24
Blu-ray	21
Bonus View	23
brightness	38
browse	
disc	22
from iPhone	29
from iPod	28
Net TV	32
online video stores	33
USB storage device	24

C

calibration microphone	13
care	
environment	9
health	9
product	8
character set	25
close disc compartment	10
computer	
connect to	18
DLNA	29
media server software	29
computer network	18
connect	
audio (analog cable)	18
audio (coaxial cable - digital)	18
audio (optical cable - digital)	17
audio from TV and other devices	17
calibration microphone	13
computer	29
home network	18
speakers	12
to Internet	18
TV (Composite)	16
TV (HDMI ARC)	15
TV (HDMI)	16
wireless speakers	13
connectors	
back connectors - center	14
back connectors - left	14
back connectors - right	15
front connectors	14
control	
disc play	22
Easylink (HDMI-CEC)	11
main unit	10
parental control	37
radio	27

D

disable	
audio post processing	36
BD-Live	24
HDMI-CEC	34
discs	
3D disc in 2D mode	22
audio	25
audio language	37
BD-Live	23
Bonus View	23
control buttons	22
DivX	24
menu language	37
options	25

picture	26
picture-in-picture	23
play	22
subtitle	37
synchronize picture and sound	22
time search	25
titles	25
display panel	10
DivX	
character set	25
subtitles	25
VOD code	24
DLNA	29
dock your iPod or iPhone	27

E

EasyLink (HDMI-CEC)	
audio input mapping	35
control buttons	11
one-touch play	34
one-touch standby	34
system audio control	34
eject disc	10
enable	
auto standby	38
auto subtitle shift	36
BD-Live	24
HDMI-CEC	34
predefined sound mode	36
screen saver	38
energy	
auto standby	38
brightness	38
screen saver	38
sleep timer	38

F

factory settings	38
FAQs	6
FM antenna	14
format SD card	33
front connectors	14

H

HDMI	
audio	36
Deep color	36
TV (HDMI ARC)	15
video	36
HDMI-CEC	34

help	
navigate	4
read	4
update	5

I

Internet	
BD-Live	23
connect to	18
online video stores	33
update home theater software	39
iPod and iPhone	
dock your iPod or iPhone	27
music	28
Philips dock	14
video and slideshow	28

L

language	
2nd audio language	23
2nd subtitle language	23
audio	37
disc menu	37
onscreen menu	37
subtitle	37
legal notices	6

M

Macintosh Twonky Media	29, 31
main unit	
overview	10
specifications	42
troubleshooting	43
manually setup speakers	13
media formats	40
media server software	29
Microsoft Windows Media Player 11	29
Microsoft Windows Media Player 12	30
MP3	
connector	14
play	27
multimedia content	
from disc	21
from online stores	33
from PC	29
from USB storage device	24
multiview	33

N	
Net TV	
access	32
clear browsing history	32
online video stores	33
watch Net TV page	32
network	
home network	18
name a device	20
settings	18
troubleshooting	45
update home theater software	39
Wi-Fi	19
wired connection	18
wireless connection	19
night mode	36
<hr/>	
O	
one-touch play	34
one-touch standby	34
online video stores	
format SD card	33
rent and play video	33
open disc compartment	10
open source software	6
options	
audio	25
picture	26
video	25
overview	
browse PC	29
connectors	14
HDMI-CEC	34
main unit	10
Net TV	32
online video stores	33
remote control	10
settings	35
<hr/>	
P	
parental control	
password	37
ratings	38
password	37
PC	
connect to	18
DLNA	29
media server software	29
Philips Easylink	34
<hr/>	
picture	
options	26
rotate	26
settings	35
slideshowes	26
troubleshooting	43
zoom	26
picture options	26
picture-in-picture	
2nd audio language	23
2nd subtitle language	23
play	
discs	22
DivX	24
from PC	32
iPod and iPhone	27
MP3	27
online video	33
radio	42
slideshowes	26
troubleshooting	44
USB	24
position	
calibration microphone	13
connectors	14
position	12
subtitle	36
power options	
auto standby	38
brightness	38
screen saver	38
sleep timer	38
preference	
audio	36
auto standby	38
auto subtitle shift	36
change password	37
disc menu	37
display panel	38
menu language	37
parental control	37
screen saver	38
sleep timer	38
subtitle	37
product specifications	40
<hr/>	
R	
radio	
control buttons	27
FM antenna	14
listen to radio	27
specifications	42
tune stations	27

ratings	38
recycling	9
region codes	40
remote control	
batteries	43
overview	10
virtual	28
rent video	
format SD card	33
online video stores	33
repeat	25

S

safety	
disposal	9
use of the product	8
watching 3D	9
screen saver	38
SD card	33
settings	
3D video	36
audio	36
auto standby	38
auto subtitle shift	36
default	38
disc language	37
HDMI audio	36
HDMI video	36
HDMI-CEC	34
menu language	37
parental rating	38
password	37
picture	35
power	38
resolution	36
restore	38
screen saver	38
sleep timer	38
subtitle language	37
video	35
sleep timer	38
slideshows	
animation	26
duration	26
musical	26
picture	26
smartphone	
browse disc or USB from smartphone	29
smartphone as remote control	29
software	
check current version	39
electronic user manual	5
update	39

sound	
auto volume	21
bass	21
default sound mode	37
equalizer	21
predefined sound mode	21
surround sound	21
synchronize picture and sound	22
treble	21
troubleshooting	44

speakers	
calibration	12
connect	12
manual setup	13
position	12
specifications	43
surround sound	21
wireless	13
specifications	40
subtitle	
character set	25
language	37
position	36
subwoofer	
specifications	43
synchronize picture and sound	22
system audio control	34

T

time search	25
titles	25
trademarks	6
treble	21
troubleshooting	
connection	43
main unit	43
network	45
picture	43
play	44
serial number	6
sound	44
tutorials	6

U

update software	
check current version	39
electronic user manual	5
from a USB storage device	39
from network	39
USB	
format	42
USB storage device	
options	25
play	24
specifications	42
update home theater software	39
user manual	
download	5
navigate	4
read	4
update	5

V

video	
HDMI deep color	36
online video	33
picture resolution	36
picture settings	35
synchronize picture and sound	22
video and slideshow	28
VOD code for DivX	24
watch 3D	22
video formats	42
video on demand	
format SD card	33
online video stores	33
video options	25
VOD code for DivX	24

W

wired network	
settings	19
wired connection	18
wireless network	
settings	20
Wi-Fi	19
Wi-Fi dongle	19
wireless connection	19
wireless speakers	13

Language Code

Abkhazian	6566
Afar	6565
Afrikaans	6570
Amharic	6577
Arabic	6582
Armenian	7289
Assamese	6583
Avestan	6569
Aymara	6589
Azerhijani	6590
Bahasa Melayu	7783
Bashkir	6665
Belarusian	6669
Bengali	6678
Bihari	6672
Bislama	6673
Bokmål, Norwegian	7866
Bosanski	6683
Brezhoneg	6682
Bulgarian	6671
Burmese	7789
Castellano, Español	6983
Catalán	6765
Chamorro	6772
Chechen	6769
Chewa; Chichewa; Nyanja	7889
中文	9072
Chuang; Zhuang	9065
Church Slav; Slavonic	6785
Chuvash	6786
Corsican	6779
äesky	6783
Dansk	6865
Deutsch	6869
Dzongkha	6890
English	6978
Esperanto	6979
Estonian	6984
Euskara	6985
äĭĖÖĖĭ	6976
Faroese	7079
Français	7082
Frysk	7089
Fijian	7074
Gaelic; Scottish Gaelic	7168
Gallegan	7176
Georgian	7565
Gikuyu; Kikuyu	7573
Guarani	7178
Gujarati	7185
Hausa	7265
Herero	7290
Hindi	7273
Hiri Motu	7279
Hrvatski	6779
Ido	7379
Interlingua (International)	7365
Interlingue	7365
Inuktitut	7385

Inupiaq	7375
Irish	7165
Íslenska	7383
Italiano	7384
Ivrit	7269
Japanese	7465
Javanese	7486
Kalaallisut	7576
Kannada	7578
Kashmiri	7583
Kazakh	7575
Kernewek	7587
Khmer	7577
Kinyarwanda	8287
Kirghiz	7589
Komi	7586
Korean	7579
Kuanyama; Kwanyama	7574
Kurdish	7585
Lao	7679
Latina	7665
Latvian	7686
Letzeburgesch;	7666
Limburi; Limburger	7673
Lingala	7678
Lithuanian	7684
Luxembourgish;	7666
Macedonian	7775
Malagasy	7771
Magyar	7285
Malayalam	7776
Maltese	7784
Manx	7186
Maori	7773
Marathi	7782
Marshallese	7772
Moldavian	7779
Mongolian	7778
Nauru	7865
Navaho; Navajo	7886
Ndebele, North	7868
Ndebele, South	7882
Ndonga	7871
Netherlands	7876
Nepali	7869
Norsk	7879
Northern Sami	8369
North Ndebele	7868
Norwegian Nynorsk;	7878
Occitan; Provençal	7967
Old Bulgarian; Old Slavonic	6785
Oriya	7982
Oromo	7977
Ossetian; Ossetic	7983
Pali	8073
Panjabi	8065
Persian	7065
Polski	8076
Português	8084

Pusho	8083
Russian	8285
Quechua	8185
Raeto-Romance	8277
Romanian	8279
Rundi	8278
Samoa	8377
Sango	8371
Sanskrit	8365
Sardinian	8367
Serbian	8382
Shona	8378
Shqip	8381
Sindhi	8368
Sinhalese	8373
Slovensky	8373
Slovenian	8376
Somali	8379
Sotho; Southern	8384
South Ndebele	7882
Sundanese	8385
Suomi	7073
Swahili	8387
Swati	8383
Svenska	8386
Tagalog	8476
Tahitian	8489
Tajik	8471
Tamil	8465
Tatar	8484
Telugu	8469
Thai	8472
Tibetan	6679
Tigrinya	8473
Tonga (Tonga Islands)	8479
Tsonga	8483
Tswana	8478
Türkçe	8482
Turkmen	8475
Twì	8487
Uighur	8571
Ukrainian	8575
Urdu	8582
Uzbek	8590
Vietnamese	8673
Volapuk	8679
Walloon	8765
Welsh	6789
Wolof	8779
Xhosa	8872
Yiddish	8973
Yoruba	8979
Zulu	9085

