

# Always there to help you

Register your product and get support at  
[www.philips.com/welcome](http://www.philips.com/welcome)

PD7006



## User manual

# PHILIPS



# Contents

---

<b>1</b>	<b>Important</b>	<b>3</b>
	Safety and notice	3
	Safety	3
	Compliance	4
	Care of the environment	4
	Copyright	5
	Warranty	6
<hr/>		
<b>2</b>	<b>Your portable DVD player</b>	<b>7</b>
	Introduction	7
	What's in the box	7
	Overview of the main unit	8
	Spill-resistant performance of the player	9
<hr/>		
<b>3</b>	<b>Get started</b>	<b>11</b>
	Charge power	11
	Switch on/off	12
	Select OSD language	12
<hr/>		
<b>4</b>	<b>Play music or movies</b>	<b>14</b>
	Play discs	14
	Connect additional equipment	17
	Play from USB	17

---

5	Adjust settings	19
---	-----------------	----

---

6	Product information	20
---	---------------------	----

---

7	Troubleshooting	22
---	-----------------	----

# 1 Important

---

## Safety and notice

Read and understand all instructions before you use this product. If damage is caused by failure to follow the instructions, the warranty does not apply.

---

## Safety

Only use attachments/accessories specified by the manufacturer.

Use only power supplies listed in the user manual.

The product shall not be exposed to dripping or splashing.

Do not place any sources of danger on the product (e.g. liquid filled objects, lighted candles).

Batteries (battery pack or batteries installed) shall not be exposed to excessive heat such as sunshine, fire or the like.

Danger of explosion if battery is incorrectly replaced. Replace only with the same or equivalent type.

Where the plug of the Direct Plug-in Adapter is used as the disconnect device, the disconnect device shall remain readily operable.



### Warning

- Never remove the casing of this product.
- Never lubricate any part of this product.
- Never place this product on other electrical equipment.
- Keep this product away from direct sunlight, naked flames or heat.
- Never look into the laser beam inside this product.
- Ensure that you always have easy access to the power cord, plug or adaptor to disconnect the product from the power.

---

# Compliance

This apparatus includes this label:



## Note

- The type plate is located on the bottom of the product.

---

# Care of the environment

## Recycling the product and the built-in battery

Your product is designed and manufactured with high quality materials and components, which can be recycled and reused.

Never dispose of your product with other household waste. Please inform yourself about the local rules on the separate collection of electrical and electronic products and batteries.

The correct disposal of these products helps prevent potentially negative consequences on the environment and human health.

Please visit [www.recycle.philips.com](http://www.recycle.philips.com) for additional information on a recycling center in your area.



## Caution

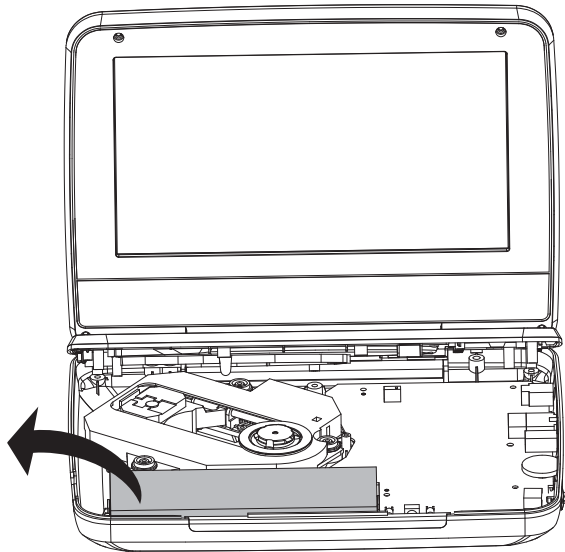
- Removal of the built-in battery invalidates the warranty and can destroy the product.

## Environmental information

All unnecessary packaging has been omitted. We have tried to make the packaging easy to separate into three materials: cardboard (box), polystyrene foam (buffer) and polyethylene (bags, protective foam sheet.)

Your system consists of materials which can be recycled and reused if disassembled by a specialized company. Please observe the local regulations regarding the disposal of packaging materials, and old equipment.

Always bring your product to a professional to remove the built-in battery.



---

## Copyright



This item incorporates copy protection technology that is protected by U.S. patents and other intellectual property rights of Rovi Corporation. Reverse engineering and disassembly are prohibited.

Specifications are subject to change without notice. Trademarks are the property of Koninklijke Philips Electronics N.V or their respective owners. Philips reserves the right to change products at any time without being obliged to adjust earlier supplies accordingly.



Manufactured under license from Dolby Laboratories.  
Dolby and the double-D symbol are trademarks of Dolby Laboratories.



ABOUT DIVX VIDEO: DivX® is a digital video format created by DivX, Inc, a subsidiary of Rovi Corporation. This is an official DivX Certified® device that plays DivX video. Visit [divx.com](http://divx.com) for more information and software tools to convert your files into DivX videos.

ABOUT DIVX VIDEO-ON-DEMAND: This DivX Certified® device must be registered in order to play purchased DivX Video-on-Demand (VOD) movies. To obtain your registration code, locate the DivX VOD section in your device setup menu. Go to [vod.divx.com](http://vod.divx.com) for more information on how to complete your registration.

---

## Warranty

- Never attempt to repair the product, this could lead to the risk of injury, damage to the product and will void your warranty.
- Use the product and accessories only as intended by the manufacturer. The caution sign printed on the back of the product indicates risk of electric shock.
- Never remove the cover of the product. Always contact Philips Customer Support for service or repairs.
- Any operation expressly prohibited in this manual, or any adjustments and assembly procedures not recommended or authorized in this manual shall void the warranty.



# 2 Your portable DVD player

Congratulations on your purchase, and welcome to Philips! To fully benefit from the support that Philips offers, register your product at [www.philips.com/welcome](http://www.philips.com/welcome).

---

## Introduction

On this portable DVD player, you can play the following discs (including CD-R, CD-RW, (S)VCD, DVD±R and DVD±RW):

- DVD-Video
- Video CD
- Audio CD
- MP3 CD
- Divx
- Discs with JPEG files

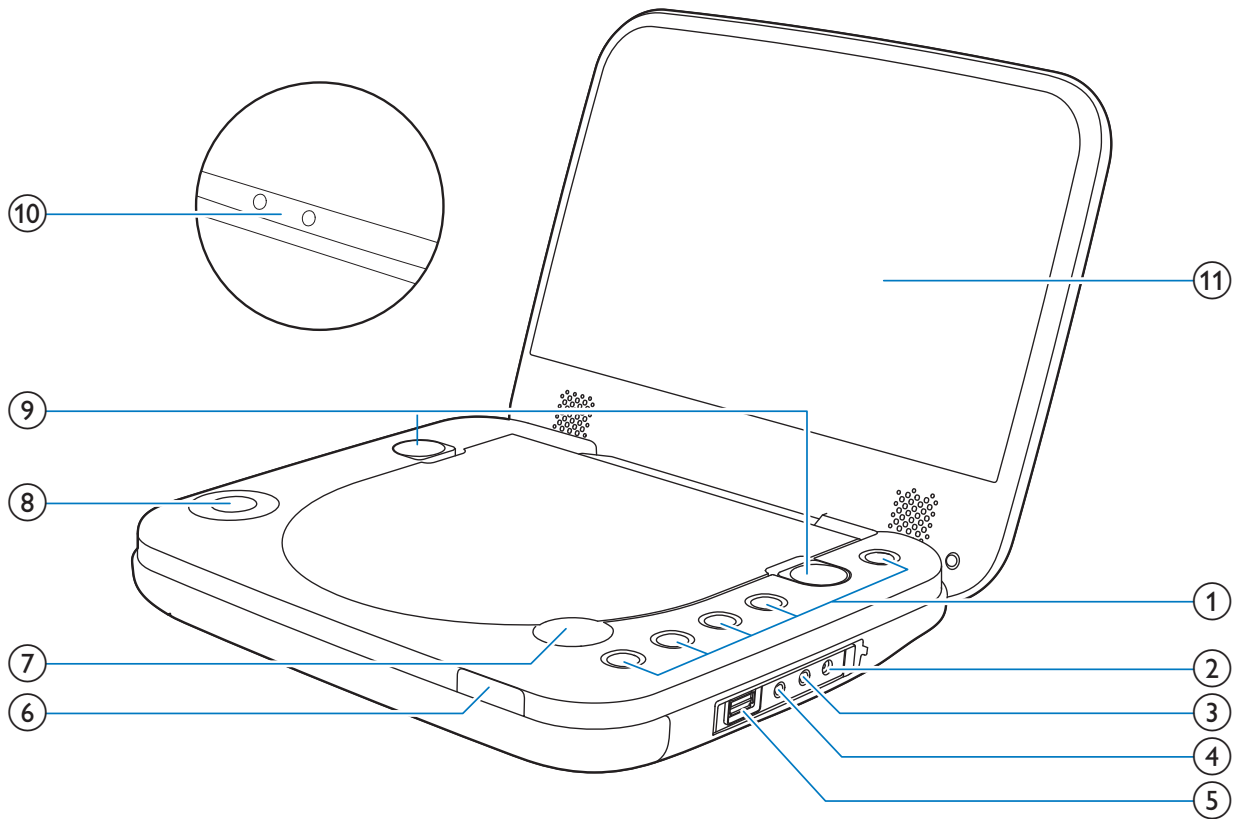
---

## What's in the box

Check and identify the contents of your package:

- Portable DVD player
- AC power adapter, ASUC12C-090080(Philips)
- Car adapter
- Short user manual

## Overview of the main unit








- ① ①
- Turns on/off DVD player.
- OPTIONS**
- Accesses the setup menu.
  - Selects disc or USB source.
  - Selects different modes before or during play.
- DVD MENU**
- For DVD, accesses or exits disc menu.
- 
- Stops disc play.
- ▶||/OK
- Confirms an entry or selection.
  - Starts, pauses or resumes disc play.

- ② **DC IN**
- Power supply socket.

- ③ **AV OUT**

- 8 **EN**

- Audio/video output jack.
- ④  Headphone jack.
- ⑤  Connects a USB storage device.
- ⑥ **Charging indicator/Power indicator**
- ⑦  **OPEN**
  - Opens the disc compartment.
- ⑧ 
  - Navigates menus.
  - 
  - Skips to the previous or next title, chapter, or track.
- ⑨ **Locks**
  - Locks the disc panel.
- ⑩ **VOLUME + / -**
  - Increases or decreases volume.
- ⑪ **Display panel**

---

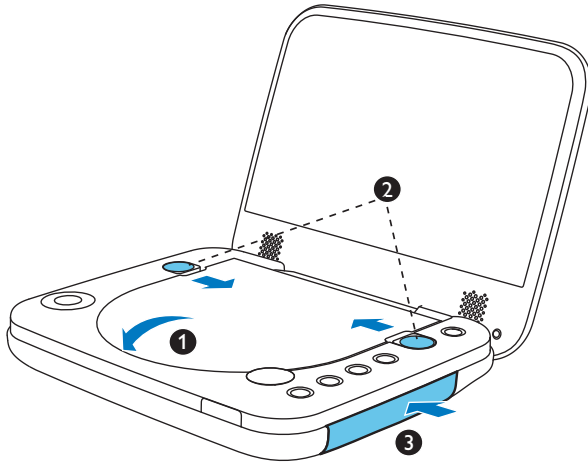
## Spill-resistant performance of the player

The spill resistance meets IP4 standard.

This spill-resistant player survives accidental spillages.

To guarantee the spill-resistant result, do the following:

- ① **Close the disc compartment door.**
- ② **Shut the locks.**
- ③ **Make sure that you close the cover of the connectors.**



### Caution

- Never immerse the player in water or other liquids.
- Never use the player near a pool or in a shower.
- The supplied adaptor is not waterproof and should be kept from getting wet.
- Never use the supplied AC/DC power adaptor in wet environments.
- Use soft towel to dry your portable DVD player when it gets wet.

# 3 Get started



## Caution

- Use the controls only as stated in this user manual.
- Always follow the instructions in this chapter in sequence.

---

## Charge power

---

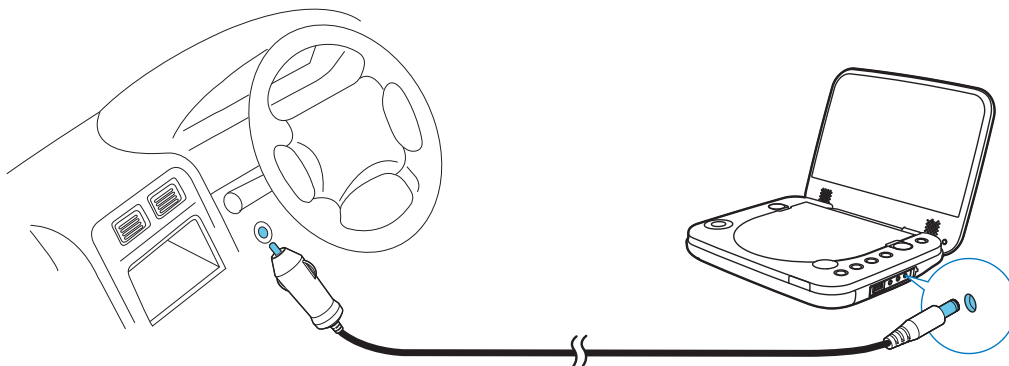
### Charge through car adapter



## Caution

- You can only charge the player when it is powered off.
- The supplied adapter is not waterproof and should be kept from getting wet.
- Never use the supplied adapter in wet environments.

Connect the supplied car adapter to the player and car cigarette lighter.

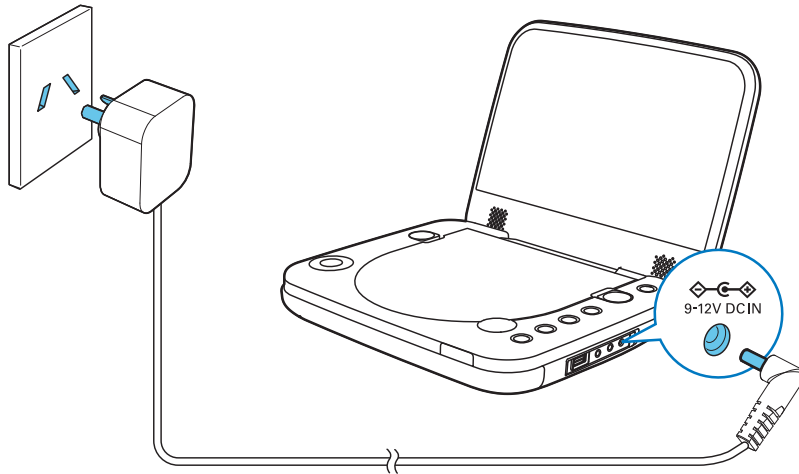


---

### Charge through the AC adapter

- 1 Find the **DC IN** jack of the player.

- 2 Connect the supplied AC adapter to the player and to the AC outlet.



- ↳ The charging indicator turns on (red).
- ↳ When the battery is fully charged, the indicator turns off.



#### Tip

- To maximize battery life, recharge the battery immediately once the battery is fully discharged. If you do not use the player for a long time, recharge the battery once every two months.

---

## Switch on/off

Press **Ⓚ** on the player to switch on.

- ↳ The indicator turns on (green).

To switch off the player, press **Ⓚ**.

- ↳ The indicator turns off.

---

## Select OSD language

You can choose a different language for the on-screen display text.

**1**

Press **OPTIONS**.

- ↳ The options menu is displayed.

- 2 Select **[Setup] (setup) > [General] > [Language]**.
- 3 Press ▲ / ▼ to select an option.
- 4 Press ►||/OK to confirm.
- 5 Press **OPTIONS** to exit.

# 4 Play music or movies

---

## Play discs

- 1 Press **◀ OPEN** on the player to open the disc compartment.
- 2 Insert the disc with label side facing up.
- 3 Push down to close the disc compartment.  
↳ Play starts automatically. If not, press **▶ || /OK**.
- 4 Lock the disc compartment door with the left and right locks to prevent water leaking into the disc compartment.
  - If a menu is displayed, select an item, then press **▶ || /OK** to start play.
  - To pause, press **▶ || /OK**. Press again to resume play.
  - To stop, press **■** twice.
  - To select the previous/next item, press **◀** or **▶**.

---

## Play options

### Select a subtitle language

You can select a subtitle languages on DVDs.

- 1 Press **OPTIONS**.  
↳ The option menu is displayed.
- 2 Select **[Subtitles]**, then press **▶ || /OK**.
- 3 Press **▲ / ▼** to select a subtitle.
- 4 Press **▶ || /OK** to confirm.
- 5 Press **OPTIONS** to exit.

### Select an audio language

You can select an audio language on DVDs or DivX discs.

- 1 Press **OPTIONS**.  
↳ The setup menu is displayed.
- 2 Select **[Audio language]**, then press **▶ || /OK**.
- 3 Press **▲ / ▼** to select a language.



4 Press ►||/OK to confirm.

### Select an audio mode

When you play VCDs, you can select an audio mode.

- 1 Press **OPTIONS**.  
↳ The option menu is displayed.
- 2 Select [**Audio**], then press ►||/OK.
- 3 Press ▲ / ▼ to select audio channel: [**Stereo**], [**Left-mono**] or [**Right-mono**].

### Repeat

During play, you can select different repeat options.

- 1 Press **OPTIONS**.  
↳ The option menu is displayed.
- 2 Select [**Repeat**] and press ►||/OK.  
↳ The repeat options are displayed.

For DVD

- [**Repeat A**]: the start of the section to repeat
- [**Repeat B**]: the end of the section to repeat
- [**Repeat Chapter**]: repeat the current chapter
- [**Repeat Title**]: repeat the current title or track
- [**Repeat all**]: repeat all titles on the disc
- [**Repeat Off**]: switch off the repeat mode

For VCD

- [**Repeat A**]: the start of the section to repeat
- [**Repeat B**]: the end of the section to repeat
- [**Repeat 1**]: repeat the current track
- [**Repeat all**]: repeat all tracks on the disc
- [**Repeat Off**]: switch off the repeat mode

For MP3/CD/DivX

- [**Repeat 1**]: repeat the current track
- [**Repeat Folder**]: repeat all the tracks in current folder
- [**Off**]: switch off the repeat mode

- 3 Select an option, then press ►||/OK to confirm.



## Tip

- You cannot repeat items when PBC is on during VCD/SVCD play.

### Random play

You can play all tracks in random order on CDs or MP3 CDs.

- 1 Press **OPTIONS**.  
↳ The option menu is displayed.
- 2 Select [**Shuffle All**] and press **▶||/OK**.
- 3 Select [**On**] or [**Off**].
- 4 Press **▶||/OK** to confirm.

### Zoom

You can zoom in and out for video images or pictures on DVDs, VCDs, or JPEG CDs.

- 1 Press **OPTIONS**.  
↳ The option menu is displayed.
- 2 Select [**Zoom & Pan**] and press **▶||/OK**.
- 3 Press **▶||/OK** repeatedly to zoom in and out.
- 4 When the video image or picture is enlarged, press **▲, ▼, ◀, ▶** to pan through it.

### Display play information

You can view the play information during play on DVDs or VCDs.

- 1 Press **OPTIONS**.  
↳ The option menu is displayed.
- 2 Select [**Display**] and press **▶||/OK** to confirm.  
↳ For DVDs, title number, chapter number and elapsed play time is displayed. For VCDs, track number and elapsed play time is displayed.

### Rotate pictures

For JPEG CDs only. While the JPEG is displayed:

- Press **▲** to flip up/down.
- Press **▼** to flip left/right.

---

## Connect additional equipment

You can connect the player to a TV or an amplifier to enjoy DVDs.

---

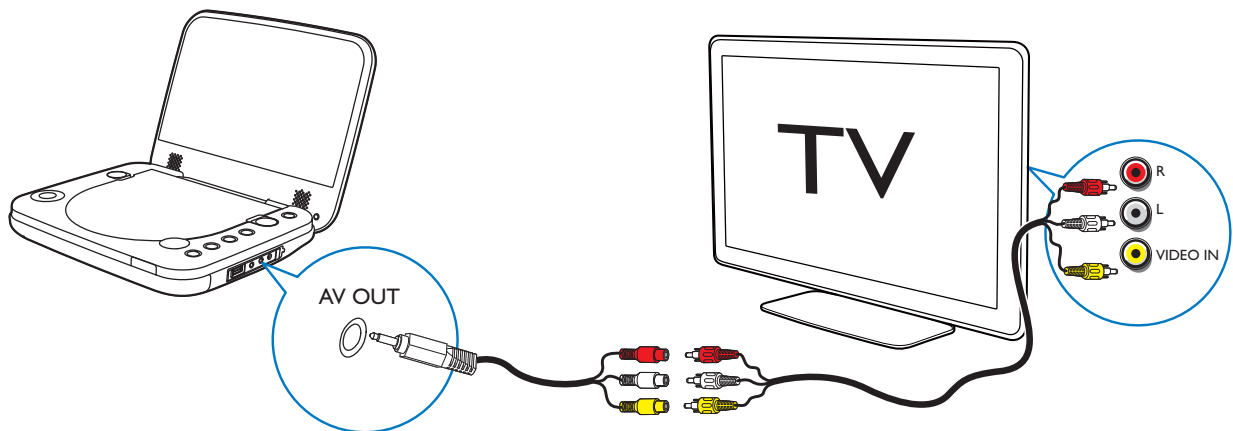
### Connect to a TV



#### Caution

- Turn off your player before connecting to any additional equipment.

- 1 Connect the to the AV cable (not supplied) to the **AV OUT** jack of the player:
- 2 Match the color of the AV cables (not supplied) with the jacks on your TV:
  - the yellow cable is for the yellow video jack
  - the red/white cable is for the red/white audio jacks.



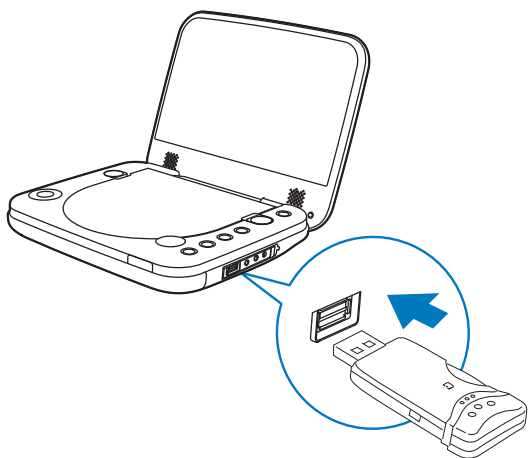
---

### Play from USB

You can play DivX, VOB, MP3, or JPEG files that are stored on a USB storage device.

- 1 Press **OPTIONS** and select **[Source]**.
- 2 Select **USB** from the menu to choose USB mode.

- 3** Connect the USB device to the player.  
↳ The content menu is displayed.



- 4** Select a file, then press ►||/OK.  
↳ Play starts.
- 5** To stop play, press ■.

# 5 Adjust settings

To maximize your play experience, use the setup menu to fine tune your settings.

- 1 Press **OPTIONS**.  
↳ The options menu is displayed.
- 2 Select **[Setup]**.  
↳ The setup menu is displayed.
- 3 Use navigation keys to select an option and press **▶||/OK** to confirm.

---

## [General]

[Language]	Select on-screen display language
[PBC settings]	Set playback control function on/off.
[Power save]	Select power save mode.
[DivX (VOD)]	Get DivX registration code.
[DivX subtitles]	Select DivX subtitle language.
[Parental(DVD)]	Select parental options.
[Set password]	Change existing password (3308 by default).
[Factory settings]	Restore factory settings.
[Video]	
[LCD Display]	Set screen display aspect ratio.
[TV standard]	Set video output format to TV system.
[Brightness]	Adjust screen brightness.
[Contrast]	Adjust screen contrast.
[Audio]	
[Dolby]	Set Dolby output.
[Version]	Check the version information.

---


- 4 Press **◀** to go back to the previous menu.
- 5 Press **OPTIONS** to exit.

# 6 Product information



## Note

- Product information is subject to change without prior notice.

Dimensions	195 x 154 x 37 mm
Weight	0.675 kg
AC power adaptor	ASUC12C-090080(Philips)
Power supply	Input: 100-240V~ 50/60Hz Output: DC 9V  0.8A
Power consumption	9.0 W
Operating temperature range	0-45°C
Laser wavelength	650 nm
Video output	
Format	PAL & NTSC
Output level	1V <sub>p-p</sub> ± 20%
Load impedance	75 Ω
Audio line out	
Audio out (analog audio)	Output level: 2V ± 10%
Load impedance	10 K Ω
Audio distortion + noise	≤ -80 (1KHz)

Frequency response	20Hz-20KHz $\pm$ 1dB
Signal/noise ratio	$\geq$ 80 dB
Channel separation	$\geq$ 80 dB
Dynamic range	$\geq$ 80 dB

### Playable media

Disc	DVD, DVD-Video, VCD/SVCD, Audio CD DVD+R/+RW, DVD-R/-RW, DVD+R/-R DL (Dual Layer) CD-R/CD-RW, MP3 media, JPEG files
------	---

### File format

Video	.avi, .divx, .mp4, xvid
Audio	.mp3
Picture	.jpg, .jpeg

### USB

Compatibility	Hi-Speed USB (2.0)
Class support	USB Mass Storage Class (UMS)
File system	FAT16, FAT32
Support USB HDD (Hard Disc Drive)	an external power source may be needed

# 7 Troubleshooting



## Warning

- Risk of electric shock. Never remove the casing of the player.

To keep the warranty valid, never try to repair the system yourself. If you encounter problems when using the player, check the following points before requesting service. If the problem remains unsolved, register your player and get support at [www.philips.com/support](http://www.philips.com/support). When you contact Philips, ensure that your apparatus is nearby and the model number and serial number are available.

### No power

- Ensure that both plugs of the mains cord are properly connected.
- Ensure that there is power at the AC outlet.
- Check if the built-in battery is drained.

### No sound

- Ensure that the AV cable is connected correctly.

### Distorted picture

- Clean the disc. With a clean, soft, lint-free cloth, wipe the disc outwards from the center.
- Make sure that the video output format of the disc is compatible with the TV.
- Change the video output format to match your TV or program.
- The LCD is manufactured using high precision technology. You may, however, see tiny black points and/or bright points (red, blue, green) that continuously appear on the LCD. This is a normal result of the manufacturing process and does not indicate a malfunction.

### Cannot play disc

- Ensure the disc label is upwards.
- Clean the disc. With a clean, soft, lint-free cloth, wipe the disc outwards from the center.
- Check if the disc is defective by trying another disc.

### The player feels warm

- When the player is in use for a long period of time, its surface will be heated. This is normal.



**Philips Electronics Australia Limited and Philips New Zealand Limited  
Warranty against Defects**

In this warranty:

**We or us** means Philips Electronics Australia Limited ACN 008 445 743 or Philips New Zealand Limited (Company Number 1723), and our contact details are set out at the end of this warranty;

**You** means the purchaser or the original end-user of the Goods;

**Supplier** means the authorised distributor or retailer of the Goods that sold you the Goods in Australia or New Zealand; and

**Goods** means the product or equipment which was accompanied by this warranty and purchased in Australia or New Zealand.

If you require assistance with the operation of the product, its features or specifications please call the Philips Consumer Care Centre on 1300 363 391 in Australia or 0800 658 224 in New Zealand.

**Australia:** Our Goods come with guarantees that cannot be excluded under the Australian Consumer Law. You are entitled to a replacement or refund for a major failure and for compensation for any other reasonably foreseeable loss or damage. You are also entitled to have the Goods repaired or replaced if the goods fail to be of acceptable quality and the failure does not amount to a major failure. This is not a complete statement of your legal rights as a consumer.

**New Zealand:** Our Goods come with guarantees that cannot be excluded under the Consumer Guarantees Act 1993. This guarantee applies in addition to the conditions and guarantees implied by that legislation.

**Additional Warranty:**

In addition to the rights and remedies that you have under the Australian Consumer Law, Consumer Guarantees Act of New Zealand or any other applicable law, we provide the following warranty against defects:

1. If, during the first 12 months from their date of purchase from the Supplier (**Warranty Period**), the Goods prove defective by reason of improper workmanship or materials and none of your statutory rights or remedies apply, we will repair or replace the Goods without charge.
2. We do not have to repair or replace the Goods under this Additional Warranty if the Goods have been used for a commercial purpose; misused, improperly or inappropriately installed, operated or repaired; abused; damaged; or not maintained in accordance with the manufacturer's instructions.
3. Even when we do not have to repair or replace the Goods, we may decide to do so anyway. In some cases, we may decide to substitute the Goods with a similar alternative product of our choosing. All such decisions are at our absolute discretion.
4. All such repaired, replaced or substituted Goods continue to receive the benefit of this Additional Warranty for the time remaining on the original Warranty Period.
5. This Additional Warranty is limited to repair, replacement or substitution only. As far as the law permits, we will not be liable for any loss or damage caused to property or persons arising from any cause whatsoever.
6. In order to claim under this Additional Warranty you must telephone us on 1300 363 391 in Australia or 0800 658 224 in New Zealand within the Warranty Period. You will be asked for details of the Goods, a description of the defect and your personal details. Upon accepting your claim, we shall assist you with either returning the Goods to the Supplier for replacement or to the most convenient Philips Authorised Service Centre for your Goods to be repaired. In some case we may require that you return to the Goods to us (at the address below) for repair, replacement or substitution.
  - \* All returned Goods must be accompanied by satisfactory proof of purchase which clearly indicates the name and address of the Supplier, the date and place of purchase and identifies product. It is best to provide a legible and unmodified receipt or sales invoice.
  - \* You must bear any expense for return of the Goods or otherwise associated with making your claim under this Additional Warranty.
7. This warranty is only valid and enforceable in Australia and New Zealand.

Contact us or the place of purchase for further details.

Philips Electronics Australia Limited  
Level 1, 65 Epping Rd,  
North Ryde, SYDNEY NSW 2113  
**Consumer Care:** 1300 363 391  
**E-mail:** [pceinfo.australia@philips.com](mailto:pceinfo.australia@philips.com)  
**Website:** [www.philips.com/support](http://www.philips.com/support)

Philips New Zealand Limited  
Level 2, 1 Nugent St,  
Grafton, AUCKLAND, 1023  
**Consumer Care:** 0800 658 224  
**Email:** [pceinfo.australia@philips.com](mailto:pceinfo.australia@philips.com)  
**Website:** [www.philips.com/support](http://www.philips.com/support)



Specifications are subject to change without notice  
© 2013 Koninklijke Philips Electronics N.V.  
All rights reserved.

PD7006\_79\_UM\_V1.1