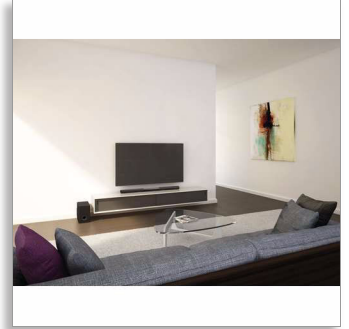




Philips
Soundbar speaker

2.1 CH wireless subwoofer
Bluetooth® aptX, AAC and NFC
1 HDMI in and HDMI out ARC
320 W



HTL5140B

Powerful sound for any TV

with wireless subwoofer

HTL5140 is a slim Soundbar with a maximum output of 320 W. A premium metal finish gives it style and it can be mounted on the wall or placed on a table top. HDMI ARC, one HDMI in for video and Bluetooth® with aptX® and AAC for wireless music.

Richer sound for watching TV and movies

- Powerful 320-W sound output
- 8" woofer for thumping bass
- Dolby Digital and DTS for great surround sound
- Virtual Surround Sound for a realistic movie experience
- Mylar material tweeter for high definition sound

Connect and enjoy all your entertainment

- Bluetooth® (aptX® and AAC) for wireless music streaming
- HDMI ARC to access all the sound from your TV
- Connect to one HDMI in for great picture and sound quality
- One-Touch with NFC-enabled smartphones for Bluetooth pairing
- EasyLink to control all HDMI CEC devices via a single remote

Designed to enhance your living space

- Wireless subwoofer for clutter-free placement

WHAT Hi-Fi?
AWARDS 2014

Soundbars & soundbases
BEST SOUNDBAR aptX, AAC
Philips HTL5140B

PHILIPS

Soundbar speaker

2.1 CH wireless subwoofer Bluetooth® aptX, AAC and NFC, 1 HDMI in and HDMI out ARC, 320 W

HTL5140B/12

Highlights

Powerful 320-W sound output

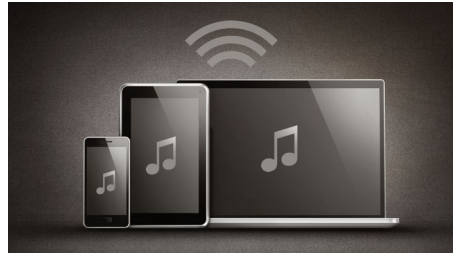


Two units, each one with 4 woofers and 2 tweeters inside, keep sound perfectly balanced. As a whole, they output 320 W of sound, which is matched by powerful bass from a 17-l subwoofer box.

Dolby Digital and DTS

Go digital and get the most out of your music and movies. Even stereo music sounds great because Dolby Digital and DTS Digital Surround enhance digital music and videos, pumping it up so you get truly immersive surround sound out of your home cinema speaker.

Bluetooth® (aptX® and AAC)



Bluetooth® (aptX® and AAC) for wireless music streaming

NFC technology



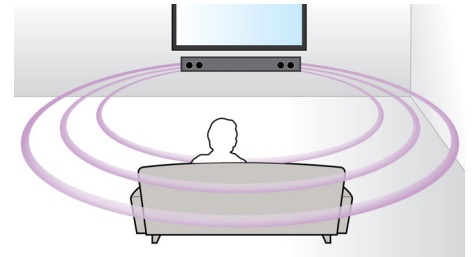
Pair Bluetooth devices easily with one-touch NFC (Near Field Communications) technology. Just tap the NFC-enabled smartphone or tablet on the NFC area of a speaker to turn the speaker on, start Bluetooth pairing and begin streaming music.

Mylar tweeter

The unique Mylar material used in the tweeters ensures incredible sound definition. The full range of high frequencies is perfectly reproduced, so music comes to life and films sound like they were meant to. An integral part

of the 2-way design, the tweeter improves high frequencies resulting in cleaner, more spacious and more accurate sound in tandem with the woofer. Improved clarity means you can identify all the different elements in the music. Listen to the individual instruments, hear the vocals more clearly, enjoy your music in refreshing detail.

Virtual Surround Sound



Philips Virtual Surround Sound produces rich and immersive surround sound from a less than five-speaker system. Highly advanced spatial algorithms faithfully replicate the sonic characteristics that occur in an ideal 5.1-channel environment. Any high quality stereo source is transformed into true-to-life, multi-channel surround sound. No need to purchase extra speakers, wires or speaker stands to appreciate room-filling sound.

One HDMI in available

Enjoy larger-than-life 3D playback and crystal-clear 5.1 or 7.1 audio by simply plugging our player's audio one HDMI in output into the connection on your non-3D AV receiver.

Soundbar speaker

2.1 CH wireless subwoofer Bluetooth® aptX, AAC and NFC, 1 HDMI in and HDMI out ARC, 320 W

Specifications

Sound

- Sound Enhancement: Treble and Bass Control, DoubleBass
- Sound System: DTS Digital Surround, Dolby Digital
- Subwoofer output power: 220 W
- Speaker output power: 100 W
- Total Power RMS @ 10% THD: 320 W

Loudspeakers

- Subwoofer driver: 1 x 8" woofer
- Subwoofer type: Wireless subwoofer
- Drivers per Soundbar: 2 X 1" Mylar tweeters, 4 racetrack woofers

Connectivity

- Rear Connections: Digital optical in, HDMI 1.4 output (ARC), HDMI IN 1, Audio-in 3.5-mm jack, USB
- Wireless connections: Bluetooth APT-X and AAC
- Integrated Connections: Bluetooth APT-X, NFC

Convenience

- EasyLink (HDMI-CEC): Audio Return Channel, Automatic audio input mapping, Remote Control-Passthrough
- HDMI Features: Audio Return Channel (ARC), Content Type

Power

- Power supply: 110-240V
- Standby power consumption: <0.5 W

Dimensions

- Main Unit (W x H x D): 1045.2 X 48.9 X 66.5 mm
- Subwoofer (W x H x D): 208 x 301 x 403 mm

Design

- Wall mountable

Accessories

- Included accessories: 2 x AAA Batteries, Power cord, Remote Control, Safety and Legal Leaflet, Trademarks Sheet, User Manual, World Wide Warranty leaflet

Outer Carton

- EAN: 87 12581 70694 4
- Gross weight: 11.2 kg
- Outer carton (L x W x H): 48 x 35.5 x 35.2 cm
- Net weight: 8.943 kg
- Number of consumer packages: 1
- Tare weight: 2.257 kg

Product dimensions

- Product dimensions (W x H x D): 104.5 x 4.9 x 7.2 cm
- Weight: 8.67 kg



Issue date 2016-04-17

Version: 7.2.6

12 NC: 8670 001 10792
EAN: 08 71258 17069 44

© 2016 Koninklijke Philips N.V.
All Rights reserved.

Specifications are subject to change without notice.
Trademarks are the property of Koninklijke Philips N.V.
or their respective owners.

www.philips.com