

Get product support at
www.philips.com/support

DLP5006U/97



User manual

PHILIPS



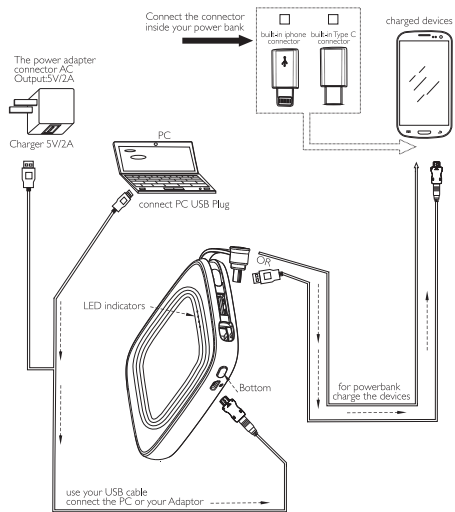
2017 © Gibson Innovations Limited.
All rights reserved.
This product has been manufactured by, and is sold under the responsibility of Gibson Innovations Ltd., and Gibson Innovations Ltd. is the warrantor in relation to this product. The Philips trademark and the Philips Shield Emblem are registered trademarks of Koninklijke Philips N.V. used under license.



UM_DLP5006U/97
WK1815_V1

1

Operation schematic diagram



2

Product Overview

- 1.This product is built with the quality of 3.7V /5000mAH high capacity lithium polymer batteries.
2. Four blue LED lights accurately display the remaining capacity of batteries and a switch light.
3. Press the switch to turn on, or connect the device with power bank to automatically charging.
- 4.This product is compact, unique shape, beautiful, fine craftsmanship, ABS + PC shell surface with UV injection process, bright color, high-end products.

Power Bank Functional Description

1. Configure four power indicators.
2. Switch operation: Mechanical switch function, press the swift (lights automatic off for about 30 seconds) at the same time there is an output power indicator lights and indicates ready for charging; long press 3 seconds to cut down the output, no-load continuously for about 30 seconds into shutdown standby.
3. Charge status: access to the charger, all the lights flash once, then the electric light display like the form shows in the above. Four lights are on when the power bank is full.
4. Discharge status: Connect to the phone or device then charges automatically, power display mode as shown in the form, if the circuit detects a continuous load current is less than the range described in the specification, lasted about 30 seconds after the light is off, enters standby sleep mode, when the battery is low, then 1 LED flashes quickly, indicating the battery is low. During using, LED lights display the percentage (remaining power) as above shown.

3

Power Display mode

Description: ○ It means lights always on
● It means lights always off
◐ It means lights always flash

	Power status	LED ON (25%)	LED ON (50%)	LED ON (75%)	LED ON (100%)
Charging	<25% Power	◐	●	●	●
	<50% Power	○	◐	●	●
	<75% Power	○	○	◐	●
	<100% Power	○	○	○	◐
Discharge	<25% Power	○	●	●	●
	<50% Power	○	○	●	●
	<75% Power	○	○	○	●
	<100% Power	○	○	○	○

Attention :

Safety Tips: No Exposure, Do not put in water; no clash, no disassemble, do not dispose in fire, Be sure to charge each half year even no use.

Dispose: Dispose in properly, Please contact with recycling companies for collection.