

Register your product and get support at

www.philips.com/support

D450

D455



Short user manual

PHILIPS

Important safety instructions



Warning

- The Electrical network is classified as hazardous. The only way to power down the charger is to unplug the power supply from the electrical outlet. Ensure that the electrical outlet is always easily accessible.
- Refer to safety information before using the product.
- Hereby, Gibson Innovations declares that this product is in compliance with the essential requirements and other relevant provisions of Directive 2014/53/EU.
- Use only the power supply listed in the user instructions.
- Use only the batteries listed in the user instructions.
- Do not allow the product to come into contact with liquids.
- Risk of explosion if battery is replaced by an incorrect type.
- Dispose of used batteries according to the instructions.
- When the handset rings or when the handsfree is activated, keep the handset away from your ear to avoid hearing damage.

1 Overview

In call

- [Enter] Enter the option menu.
- [Enter] Change the sound profile.
- [Up/Down] Adjust the volume.
- [R] Recall (network dependent).
- [End] End calls.
- [#a/A] Enter a pause (press and hold).
- [Speaker] Turn the speaker on/off.
- [Microphone] Mute/unmute the microphone.

In menu

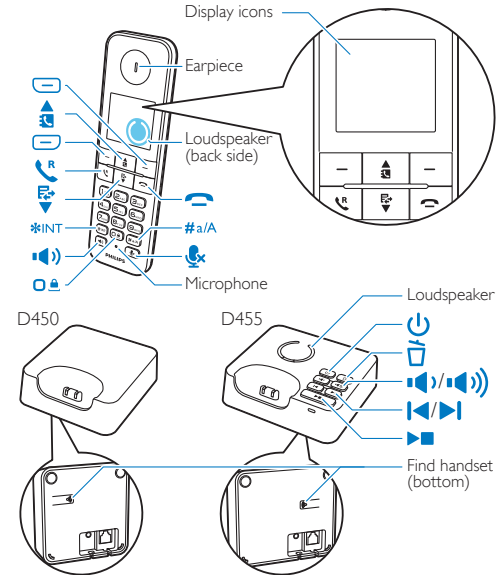
- [Enter] Confirm / Select / Enter the option menu.
- [Enter] Cancel / back
- [Up/Down] Up / down
- [End] Exit menu.

Standby

- [Enter] Access the main menu.
- [Enter] Access the redial list.
- [Phonebook] Phonebook
- [Call log] Call log
- [Call] Make and receive calls.
- [Call] Switch the handset on or off (press and hold).
- [*INT] Make intercom call (press and hold).
- [Lock] Lock/unlock the keypad (press and hold).
- [Speaker] Make and receive calls through the speaker.
- [D455 only] Press to play new message from the answer machine. / Access to the answer machine menu.

In text input

- [Delete] Delete text.
- [Space] Enter a space.
- [#a/A] Switch upper/lower case (press and hold).

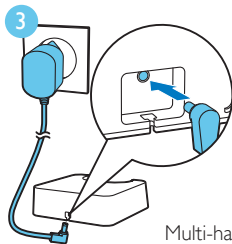
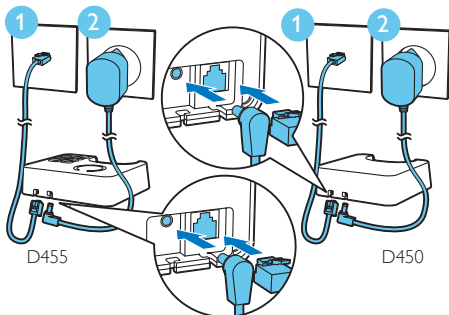


Display icons

- [Signal strength] It shows the connection status between the handset and base station. The more bars are shown, the better the signal strength is.
- [Call log] It remains steadily on when browsing incoming calls in the call log.
- [Redial list] It remains steadily on when browsing outgoing calls in the redial list.
- [Missed call] It flashes when there is a new missed call or when browsing unread missed calls in call log. It remains steadily on when only old call log exists or when browsing the read missed calls in call log.
- [Blocked call] It remains steadily on when browsing blocked calls in call log.
- [Incoming call] It flashes when receiving incoming call. It remains steadily on when you are in a call.
- [Alarm] The alarm is activated.
- [Silent mode] The silent mode is set, but is outside of active period.
- [Speaker] The speaker is on.

- [Ringer off] The ringer is off. The silent mode is set and within active period (the phone does not ring).
- [D455 only: Answering machine] D455 only: Answering machine: it flashes when there is a new message or when the memory is full. It is displayed when the telephone answering machine is turned on.
- [Voice messages indicator] Voice messages indicator: flashes for new messages, is steady for reviewed messages. * This is network dependent.
- [Volume] It is displayed when you scroll up/down a list or increase and decrease the volume.
- [Eco mode] The Eco mode is activated.
- [Eco+ mode] The ECO+ mode is activated.

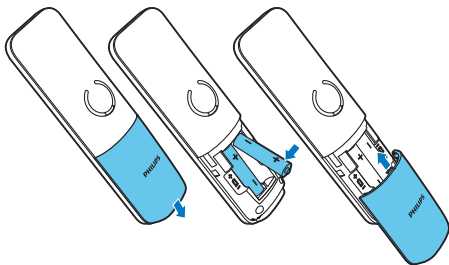
2 Connect



Multi-handset version only.

3 Get started

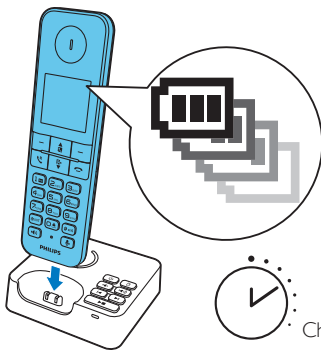
Insert batteries



Configure your phone

- 1 When using your phone for the first time, you see a welcome message (country dependent).
- 2 Set the country and language if prompted.
- 3 Set the date and time.
 - If the time is in 12-hour format, press / to select **[am]** or **[pm]** (country dependent).

Charge your phone



> 70%

40% - 70%

10% - 40%

Flashing: low battery

Scrolling: charging in progress



4 Enjoy

Phonebook

Add record

- 1 Press **[Menu]**.
- 2 Select **[Phonebook]** > **[Add new]**.
- 3 Follow on-screen instructions.

Call from the phonebook

- 1 Press .
- 2 Select a record and press .
- 3 Follow on-screen instructions.

Direct access memory

You have up to 2 direct access memories (keys 1 and 2). To dial the saved phone number automatically, press and hold on the keys in standby mode. Depending on your country, keys 1 and 2 are preset to the voice mail number and information service number of your service provider respectively (network dependent).

Call log

Call from the call log

- 1 Press .
- 2 Select a record and press .

View record

Press  > **[Option]** > **[View]**.

Save record

- 1 Press  > **[Option]** > **[Save number]**.
- 2 Follow on-screen instructions.

Delete record

- 1 Press  > **[Option]** > **[Delete]**.
- 2 Follow on-screen instructions.

Redial list

Call from the redial list

- 1 Press **[Redial]**.
- 2 Select a record and press .

Save record

- 1 Press **[Redial]** > **[Option]** > **[Save number]**.
- 2 Follow on-screen instructions.

Delete record


- 1 Press **[Redial]** > **[Option]** > **[Delete]**.
- 2 Follow on-screen instructions.

Record an announcement (for D455 only)

- 1 Press **[Menu]** > **[Answ. Machine]** > **[Announcement]**.
- 2 Follow on-screen instructions.

Register additional handsets

You can register additional handsets to the base station.

- 1 Press **[Menu]**.
- 2 Select **[Services]** > **[Register]**, then press **[OK]** to confirm.
- 3 Press and hold  on the base station for 5 seconds.
- 4 Enter the system PIN/passcode (0000).
- 5 Press **[OK]** to confirm the PIN/passcode.
↳ Registration is complete in less than 2 minutes.

Restore default settings

You can reset your phone settings to the original factory settings.

- 1 Press **[Menu]**.
- 2 Select **[Services]** > **[Reset]**, then press **[OK]** to confirm.
- 3 Follow on-screen instructions.



Note

- You may recall the original PIN/passcode by following this procedure.

5 Learn more

Silent mode

Sets time during which the phone will not ring.

[Phone setup] > [Sounds] > [Silent mode]

MySound

Customizes the sound of voices to your liking.

[Phone setup] > [Sounds] > [MySound]

Eco/ECO+ mode

Reduces transmission power and radiation (causes 2 seconds ring delay, 50% shorter standby time).

[Phone setup] > [Eco mode]/[ECO+ mode]

Call barring

Prevents unwanted outgoing calls to selected numbers.

[Services] > [Call barring]

Blacklist

Blocks incoming calls to certain undesirable numbers.

[Services] > [Blacklist]



Technical data

Battery

Philips: 2 x AAA NiMH 1.2 V Rechargeable
550 mAh batteries

Use only the supplied batteries.

Adapter (Base and charger):

	Meic:	Philips:
	MN-A102-U130	S003IB0600040
Input:	100-240 V~ 50/60 Hz 200 mA	100-240 V~ 50/60 Hz 150 mA
Output:	6 Vdc 400 mA	6 Vdc 400 mA

Phonebook with 50 entries

Call log with 50 entries

Talk time: 16 hours

Standby time: 250 hours

RF output power: <24 dBm

Frequency Band: 1880 MHz ~ 1900 MHz



Note


- You can install a DSL (digital subscriber line) filter to prevent noise and caller ID problems caused by the DSL interference.
- You can find the Declaration of Conformity on www.p4c.philips.com.

? Frequently asked questions



No signal bar is displayed on the screen.

- The handset is out of range. Move it closer to the base station.
- If the handset displays **[Register your Handset]**, register your handset. (See the section on “Register additional handsets”).

If I fail to pair (register) the additional handsets to the base station, what do I do?

Your base memory is full. Access  > **[Services]** > **[Unregister]** to unregister the unused handsets and try again.

I have chosen a wrong language which I cannot read, what do I do?

- 1 Press  to go back to the standby screen.
- 2 Press  to access the main menu screen.
- 3 The following options will appear on the screen:

[Phone setup] > [Language]
[Réglages] > [Langue]
[Telefon-Setup] > [Sprache]
[Config. telef.] > [Lingua]

- 4 Select them to access the language options.
- 5 Select your own language.

My handset is in searching status, what do I do?

- Make sure that the base station has power supply.
- Register the handset to the base station.
- Move the handset closer to the base station.

I cannot change the settings of my voice mail, what do I do?

The voice mail service is managed by your service provider but not the phone itself. Contact your service provider to change the settings.

No display

- Make sure the batteries are charged.
- Make sure there are power and phone connections.

The handset on the charger does not charge.

- Make sure the batteries are inserted correctly.
- Make sure the handset is placed properly on the charger. The battery icon animates when charging.
- Make sure the docking tone setting is turned on. When the handset is placed correctly on the charger, you can hear a docking tone.
- The charging contacts are dirty. Disconnect the power supply first and clean the contacts with a damp cloth.
- Batteries are defective. Purchase new ones with the same specifications.

Bad audio (crackles, echo, etc.)

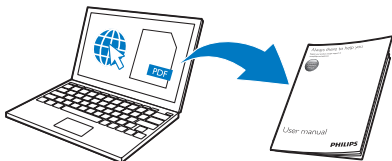
- The handset is nearly out of range. Move it closer to the base station.
- The phone receives interference from the nearby electrical appliances. Move the base station away from them.
- The phone is at a location with thick walls. Move the base away from them.

The handset does not ring.

Make sure the handset ringtone is turned on.

The caller ID does not display.

- The service is not activated. Check with your service provider.
- The caller's information is withheld or unavailable.



www.philips.com/support

To access the user instructions online, use the reference model number written on the product label at the bottom of the base station.



This symbol on a product means that the product is covered by European Directive 2012/19/EU.

This product has been manufactured by, and is sold under the responsibility of Gibson Innovations Ltd., and Gibson Innovations Ltd. is the warrantor in relation to this product.

Philips and the Philips Shield Emblem are registered trademarks of Koninklijke Philips N.V. and are used under license from Koninklijke Philips N.V.



UMS_D450/455
05_EN_V4.0
WK17122