

Register your product and get support at
www.philips.com/welcome

MC127



EN User manual

PHILIPS

Contents

1 Important	4
Safety	4
Notice	5

2 Your Micro Hi-Fi System	6
Introduction	6
What's in the box	6
Overview of the main unit	7
Overview of the remote control	8

3 Connect	9
Connect speakers	9
Connect power	9

4 Get started	10
Prepare the remote control	10
Turn on	10

5 Play disc	11
Play options	11

6 Adjust volume level and sound effect	12
Adjust volume level	12
Enhance bass	12
Mute sound	12

7 Listen to radio	12
Tune to a radio station	12
Program radio stations automatically	12
Program radio stations manually	13
Select a preset radio station	13

8 Other features	13
Listen to an external device	13

9 Product information	14
Specifications	14

10 Troubleshooting	15
---------------------------	----

1 Important

Safety

Know these safety symbols



This 'bolt of lightning' indicates uninsulated material within your unit may cause an electrical shock. For the safety of everyone in your household, please do not remove product covering.

The 'exclamation mark' calls attention to features for which you should read the enclosed literature closely to prevent operating and maintenance problems.

Risk of electric shock or fire!

- Never place the product and accessories near naked flames or other heat sources, including direct sunlight.
- Unplug this apparatus during lightning storms or when unused for long periods of time.
- Where the mains plug or an appliance coupler is used as the disconnect device, the disconnect device shall remain readily operable.

Risk of short circuit or fire!

- Before you connect the product to the power outlet, ensure that the power voltage matches the value printed on the back or bottom of the product. Never connect the product to the power outlet if the voltage is different.

Risk of injury or damage to the product!

- Follow all instructions.
- Heed all warnings.
- Clean only with dry cloth.

- Never remove the casing of this apparatus.
- Never lubricate any part of this apparatus.
- Never place this apparatus on other electrical equipment.
- Never look into the laser beam inside the apparatus.
- Only use attachments/accessories specified by the manufacturer.
- Apparatus shall not be exposed to dripping or splashing.
- Do not place any sources of danger on the apparatus (e.g. liquid filled objects, lighted candles).
- Refer all servicing to qualified service personnel. Servicing is required when the apparatus has been damaged in any way, such as power-supply cord or plug is damaged, liquid has been spilled or objects have fallen into the apparatus, the apparatus has been exposed to rain or moisture, does not operate normally, or has been dropped.

Risk of overheating!

- Never install this product in a confined space. Always leave a space of at least four inches around the product for ventilation. Make sure that curtains or other objects never cover the ventilation slots on the product.

Risk of contamination!

- Install the battery correctly, + and - as marked on the remote control.
- Remove batteries if the remote control is not used for a long time.

Risk of swallowing batteries!

- The unit/remote control may contain a coin type battery, which can be swallowed.
- Keep the battery out of children's reach at all times!

! Caution

- Use of controls or adjustments or performance of procedures other than herein may result in hazardous radiation exposure or other unsafe operation.

Notice

Any changes or modifications made to this device that are not expressly approved by Philips Consumer Lifestyle may void the user's authority to operate the equipment.



This product complies with the radio interference requirements of the European Community.



Your product is designed and manufactured with high quality materials and components, which can be recycled and reused.



When this crossed-out wheeled bin symbol is attached to a product it means that the product is covered by the European Directive 2002/96/EC. Please inform yourself about the local separate collection system for electrical and electronic products.

Please act according to your local rules and do not dispose of your old products with your normal household waste. Correct disposal of your old product helps to prevent potential negative consequences for the environment and human health.



Your product contains batteries covered by the European Directive 2006/66/EC, which cannot be disposed with normal household waste. Please inform yourself about the local rules on separate collection of batteries because correct disposal helps to prevent

negative consequences for the environmental and human health.

Environmental information

All unnecessary packaging has been omitted. We have tried to make the packaging easy to separate into three materials: cardboard (box), polystyrene foam (buffer) and polyethylene (bags, protective foam sheet.) Your system consists of materials which can be recycled and reused if disassembled by a specialized company. Please observe the local regulations regarding the disposal of packaging materials, exhausted batteries and old equipment.

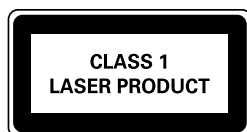
Copyright notice



**Be responsible
Respect copyrights**

This item incorporates copy protection technology that is protected by U.S. patents and other intellectual property rights of Rovi Corporation. Reverse engineering and disassembly are prohibited.

This apparatus includes this label:



Class II equipment symbol:



This symbol indicates that this product has a double insulation system.



Note

- The type plate is located on the bottom of the apparatus.

2 Your Micro Hi-Fi System

Congratulations on your purchase, and welcome to Philips! To fully benefit from the support that Philips offers, register your product at www.Philips.com/welcome.

Introduction

With this unit, you can:

- enjoy audio from discs and other external devices
- listen to radio stations

You can enrich sound output with the following sound effect:

- Dynamic Bass Boost (DBB)

The unit supports the following media format:

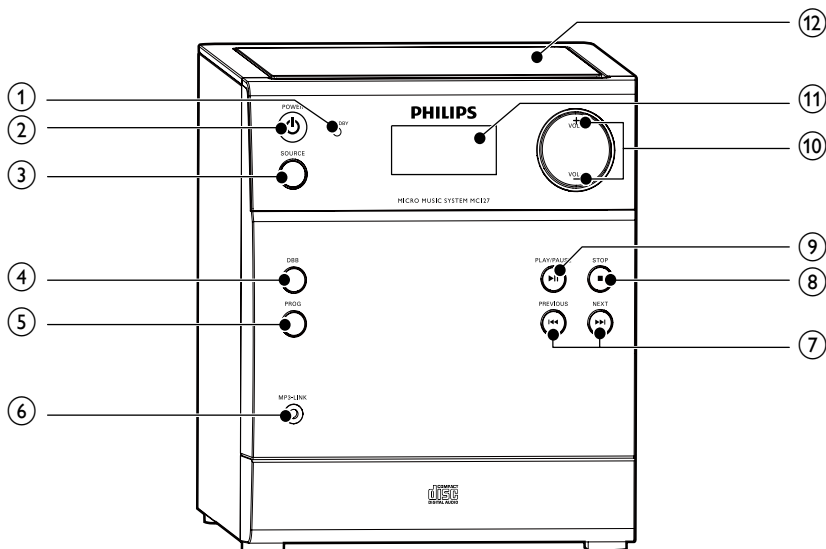


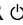
What's in the box

Check and identify the contents of your package:

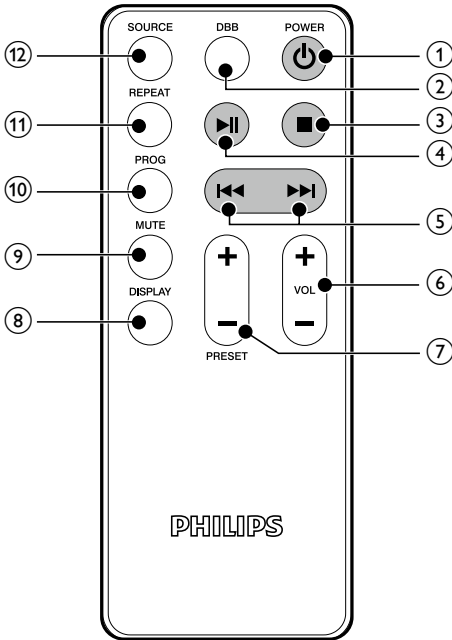
- Main unit
- 2 speakers
- Remote control
- MP3 link cable
- User manual

Overview of the main unit



- ① **STANDBY**
 - Indicate the standby mode.
- ② **POWER** 
 - Turn on/off the unit.
 - Switch to standby mode.
- ③ **SOURCE**
 - Select a source: disc, FM, or AUX.
- ④ **DBB**
 - Turns on or off dynamic bass enhancement.
- ⑤ **PROG**
 - Program tracks.
 - Program radio stations.
- ⑥ **MP3 LINK**
 - Jack for an external audio device.
- ⑦ **◀◀ / ▶▶**
 - Skip to the previous/next track.
 - Search within a track or disc.
 - Tune to a radio station.
- ⑧ **■**
 - Stop play or erase a program.
- ⑨ **▶▶**
 - Start or pause play.
- ⑩ **VOL +/-**
 - Adjust volume.
- ⑪ **Display panel**
 - Show current status.
- ⑫ **Disc compartment**

Overview of the remote control



- ⑦ **PRESET +/-**
 - Select a preset radio station.
- ⑧ **DISPLAY**
 - Show current status.
- ⑨ **MUTE**
 - Mute or restore volume.
- ⑩ **PROG**
 - Program tracks.
 - Program radio stations.
- ⑪ **REPEAT**
 - Play a track or all tracks repeatedly.
- ⑫ **SOURCE**
 - Select a source: disc, FM, or AUX.

- ① **POWER**
 - Turn on/off the unit.
 - Switch to standby mode.
- ② **DBB**
 - Turns on or off dynamic bass boost.
- ③ **■**
 - Stop play or erase a program.
- ④ **▶ ||**
 - Start or pause play.
- ⑤ **◀◀ / ▶▶**
 - Skip to the previous/next track.
 - Search within a track or disc.
 - Tune to a radio station.
- ⑥ **VOL +/-**
 - Adjust volume.

3 Connect

Connect speakers

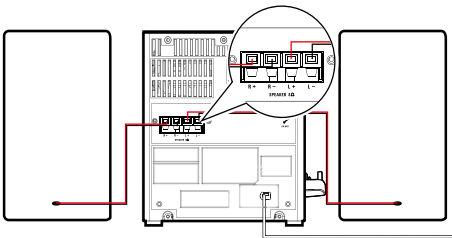
Note

- Insert the stripped portion of each speaker wire into the socket completely.
- For optimal sound, use the supplied speakers only.
- Connect only speakers with impedance that is the same or higher than the supplied speakers. Refer to the Specifications section of this manual.

- 1 For one speaker, insert the red wire to the red (R+) socket on the back of the main unit, and the black wire into the black (R-) socket.
- 2 For another speaker, repeat step 1 to insert the wires into the red (L+) and the black (L-) socket.

To insert each speaker wire:

- 1 Hold down the socket flap.
- 2 Insert the speaker wire fully.
- 3 Release the socket flap.

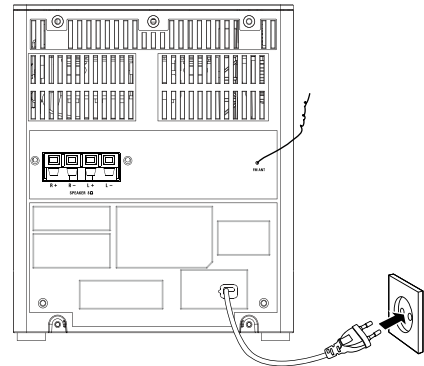


Connect power

! Caution

- Risk of product damage! Make sure that the power supply voltage corresponds to the voltage printed on the back or the underside of the Micro Hi-Fi system.
- Before connecting the AC power cord, make sure that you have completed all other connections.

Connect the AC power cable to the power outlet.



4 Get started

Always follow the instructions in this chapter in sequence.

If you contact Philips, you will be asked for the model and serial number of this apparatus. The model number and serial number are on the rear of the apparatus. Write the numbers here:

Model No. _____

Serial No. _____

Prepare the remote control



Caution

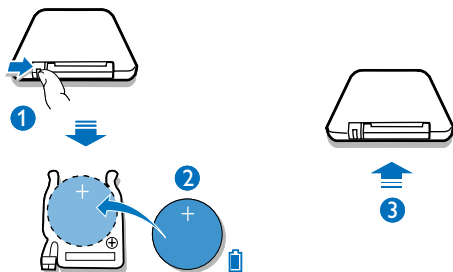
- Risk of explosion! Keep batteries away from heat, sunshine or fire. Never discard batteries in fire.
- Risk of decreased battery life! Never mix different brands or types of batteries.
- Risk of product damage! When the remote control is not used for long periods, remove the batteries.
- Danger of explosion if battery is incorrectly replaced. Replace only with the same or equivalent type.

For first-time use:

- 1 Remove the protective tab to activate the remote control battery.

To replace the remote control battery:

- 1 Open the battery compartment.
- 2 Insert one CR2025 battery with correct polarity (+/-) as indicated.
- 3 Close the battery compartment.



Turn on

Press **POWER**.

- ↳ The unit switches to the last selected source.

Switch to standby

Press **POWER** again to switch the unit to standby mode.

- ↳ The red standby indicator turns on.
- ↳ The backlight on the display panel turns off.

5 Play disc

- 1 Press **SOURCE** repeatedly to select the disc source.
- 2 Open the disc compartment.
- 3 Insert a disc with the printed side facing up.
- 4 Close the disc compartment.
 - To pause/resume play, press **▶||**.
 - To stop play, press **■**.

Play options

Skip to a track

During play, press **◀◀ / ▶▶** to select another track.

Search within a track

- 1 During play, press and hold **◀◀ / ▶▶**.
- 2 Release to resume normal play.

Display play information

During play, press **DISPLAY** repeatedly to select different play information.

Program tracks

You can program a maximum of 20 tracks.

- 1 In disc mode, in the stop position, press **PROG** to activate the program mode.
↳ **[01-]** is displayed.
- 2 Press **◀◀ / ▶▶** to select a track number, and then press **PROG** to confirm.
- 3 Repeat steps 1 to 2 to select and store more tracks to program.
- 4 Press **▶||** to play the programmed tracks.
↳ During play, **[01-]** is displayed.
 - To erase the program, in the stop position, press **■**.

Repeat play

- 1 During play, press **REPEAT** repeatedly to select:
 - **[r1]**: play the current track repeatedly.
 - **[rA]**: play all tracks repeatedly.
- 2 To return to normal play, press **REPEAT** repeatedly until repeat mode is no longer displayed.

6 Adjust volume level and sound effect

Adjust volume level

During play, press **VOL +/-** to increase/decrease the volume level.

Enhance bass

During play, press **DBB** to turn on or off dynamic bass enhancement.

- [**dbb-1**]: turn **DBB** on.
- [**dbb-0**]: turn **DBB** off.

Mute sound

During play, press **MUTE** to mute or restore the volume.

7 Listen to radio

Tune to a radio station

- 1 Press **SOURCE** repeatedly to select FM source.
- 2 Press and hold **◀◀ / ▶▶** for more than 2 seconds.
 - ↳ The radio tunes to a station with strong reception automatically.
- 3 Repeat step 2 to tune to more stations.
 - To tune to a weak station, press **◀◀ / ▶▶** repeatedly until you find optimal reception.

Program radio stations automatically



Note

- You can program a maximum of 20 preset FM radio stations.

In tuner mode, press and hold **PROG** for more than 2 seconds to activate automatic program mode.

- ↳ [**AUTO**] (auto) is displayed.
- ↳ All available stations are programmed in the order of waveband reception strength.
- ↳ The first programmed radio station is broadcast automatically.

Program radio stations manually

Note

- You can program a maximum of 20 preset radio stations.

- 1 Tune to a radio station.
- 2 Press **PROG** to activate program mode.
↳ [P-] is displayed.
- 3 Press **PRESET +/-** to allocate a number to this radio station, and then press **PROG** to confirm.
↳ The preset number and the frequency of the preset station are displayed.
- 4 Repeat the above steps to program other stations.

Tip

- To overwrite a programmed station, store another station in its place.

Select a preset radio station

In tuner mode, press **PRESET +/-** to select a preset number.

Tip

- Position the antenna as far as possible from TV, VCR or other radiation source.
- For optimal reception, fully extend and adjust the position of the antenna.

8 Other features

Listen to an external device

You can listen to an external device through this micro Hi-Fi system.

- 1 Press **SOURCE** repeatedly to select **AUX** source.
- 2 Connect the supplied MP3 link cable to:
 - **MP3 LINK** jack (3.5 mm) on the unit
 - the headphone jack on an external device
- 3 Start to play the device (see the device user manual).

9 Product information



Note

- Product information is subject to change without prior notice.

Specifications

Amplifier

Rated Output Power	2 × 2 W RMS
Frequency Response	60 - 16 kHz, ±3 dB
Signal to Noise Ratio	>50 dBA
Aux Input	0.5 V RMS 20 kohm

Disc

Laser Type	Semiconductor
Disc Diameter	12 cm/8 cm
Support Disc	CD-DA, CD-R, CD-RW
Audio DAC	24 Bits / 44.1 kHz, ±3 dB
Total Harmonic Distortion	<1%
Frequency Response	60 Hz -16 kHz (44.1 kHz)
S/N Ratio	>50 dBA

Tuner

Tuning Range	FM: 87.5 - 108 MHz
Tuning grid	50 KHz
Sensitivity	
- Mono, 26dB S/N Ratio	<22 dBf
- Stereo, 46dB S/N Ratio	<43 dBf
Search Selectivity	>28 dBf
Total Harmonic Distortion	<3%
Signal to Noise Ratio	>55 dB

Speakers

Speaker Impedance	8 ohm
Speaker Driver	3.5" full range
Sensitivity	>82 dB/m/W

General information

AC power	220 - 230 V, 50 Hz
Operation Power Consumption	12 W
Standby Power Consumption	<0,5 W
Dimensions	
- Main Unit (W × H × D)	152 × 175 × 205 mm
- Speaker Box (W × H × D)	132 × 175 × 158 mm
Weight	
- With Packing	3.82 kg
- Main Unit	1.1 kg
- Speaker Box	2 × 0.9 kg

10 Troubleshooting

Caution

- Never remove the casing of this apparatus.

To keep the warranty valid, never try to repair the system yourself.

If you encounter problems when using this apparatus, check the following points before requesting service. If the problem remains unsolved, go to the Philips web site (www.philips.com/welcome). When you contact Philips, ensure that the apparatus is nearby and the model number and serial number are available.

No power

- Ensure that the AC power cord of the unit is connected properly.
- Ensure that there is power at the AC outlet.
- As a power-saving feature, the system switches off automatically 15 minutes after track play reaches the end and no control is operated.

No response from the unit

- Disconnect and reconnect the AC power plug, and then turn on the system again.

No sound or poor sound

- Adjust the volume.
- Check if the speakers are connected correctly.
- Check if the stripped speaker wires are clamped.

Remote control does not work

- Before you press any function button, first select the correct source with the remote control instead of the main unit.
- Reduce the distance between the remote control and the unit.
- Insert the battery with its polarities (+/- signs) aligned as indicated.
- Replace the battery.
- Aim the remote control directly at the sensor on the front of the unit.

No disc detected

- Insert a disc.
- Check if the disc is inserted upside down.
- Wait until the moisture condensation at the lens has cleared.
- Replace or clean the disc.
- Use a finalized CD or correct format disc.

Poor radio reception

- Increase the distance between the unit and your TV or VCR.
- Fully extend the antenna.

