

Always there to help you

Register your product and get support at
www.philips.com/welcome



AJ4000B



User Manual

PHILIPS

Contents

1	Important	3
----------	------------------	----------

2	Your clock radio	4
	What's in the box	4

3	Get started	4
	Install battery	4
	Connect power	4
	Set clock	5

4	Listen to FM radio	5
----------	---------------------------	----------

5	Set alarm timer	6
	Set alarm	6
	Select an alarm source	6
	Deactivate the alarm timer	6
	Snooze the alarm	6

6	Other features	7
	Adjust brightness	7
	Set sleep timer	7
	Charge your mobile phone	7

7	Product information	8
	General information	8
	Tuner (FM)	8
	Amplifier	8

8	Troubleshooting	8
----------	------------------------	----------

9	Notice	9
	Disposal of your old product and batteries	9
	Copyright	9

1 Important

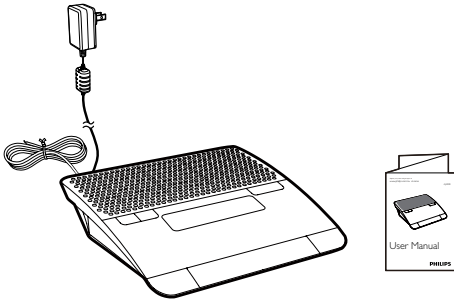
- Read these instructions.
- Heed all warnings.
- Follow all instructions.
- Do not block any ventilation openings. Install in accordance with the manufacturer's instructions.
- Do not install near any heat sources such as radiators, heat registers, stoves, or other apparatus (including amplifiers) that produce heat.
- Protect the power cord from being walked on or pinched, particularly at plugs, convenience receptacles, and the point where they exit from the clock radio.
- Only use attachments/accessories specified by the manufacturer.
- Unplug this clock radio during lightning storms or when unused for long periods of time.
- Refer all servicing to qualified service personnel. Servicing is required when the clock radio has been damaged in any way, such as power-supply cord or plug is damaged, liquid has been spilled or objects have fallen into the clock radio, the clock radio has been exposed to rain or moisture, does not operate normally, or has been dropped.
- Battery usage CAUTION – To prevent battery leakage which may result in bodily injury, property damage, or damage to the clock radio:
 - Install the battery correctly, + and - as marked on the clock radio.
 - Remove the battery when the clock radio is not used for a long time.
 - The battery shall not be exposed to excessive heat such as sunshine, fire or the like.
- This clock radio shall not be exposed to dripping or splashing.
- Do not place any sources of danger on the clock radio (e.g. liquid filled objects, lighted candles).
- Where the plug of the Direct Plug-in Adapter is used as the disconnect device, the disconnect device shall remain readily operable.

2 Your clock radio

Congratulations on your purchase, and welcome to Philips! To fully benefit from the support that Philips offers, register your product at www.philips.com/welcome.

What's in the box

Check and identify the contents of the package:



3 Get started

Always follow the instructions in this chapter in sequence.

Install battery



Caution

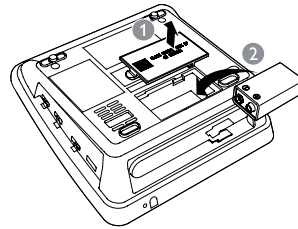
- Risk of explosion! Keep the battery away from heat, sunshine or fire. Never discard battery in fire.
- The battery contains chemical substances, so it should be disposed of properly.

Insert one **9V 6F22** battery (not supplied) with correct polarity (+/-) as illustrated.



Note

- The battery can only back up clock and alarm settings.



Connect power

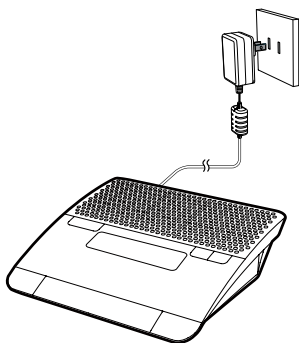


Caution

- Risk of product damage! Make sure that the power voltage corresponds to the voltage printed on the back or underside of the clock radio.
- Risk of electric shock! When you unplug the power adapter, always pull the plug from the socket. Never pull the cord.

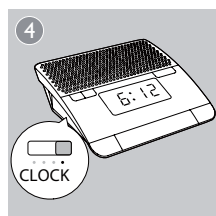
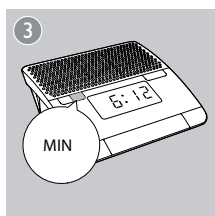
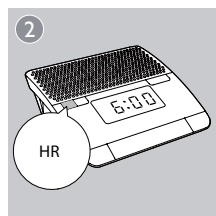
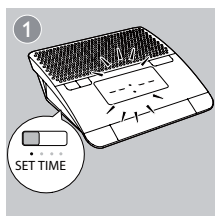
Note

- The type plate is located at the bottom of the clock radio.



Set clock

- 1 Switch the slider to **SET TIME**.
↳ The hour and minute digits blink.
- 2 Press **HR** and **MIN** to adjust time.
- 3 Switch the slider to **CLOCK** to confirm the setting.

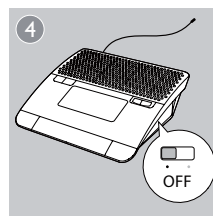
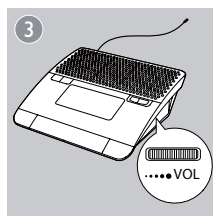
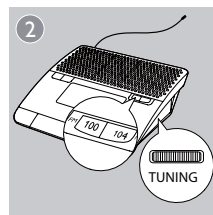
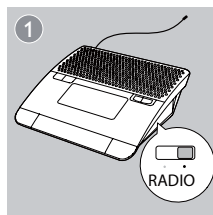


4 Listen to FM radio

Note

- Keep the clock radio away from other electronic devices to avoid radio interference.
- For better reception, fully extend and adjust the position of the FM antenna.

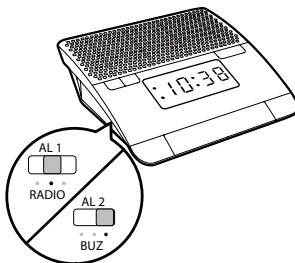
- 1 Switch the slider to **RADIO**.
- 2 Rotate **TUNING** to select a station.
↳ The indicator shows the radio frequency of the waveband.
- 3 While listening, rotate **VOL** to adjust volume.
- 4 To turn off the radio, switch the slider to **OFF**.



5 Set alarm timer

Note

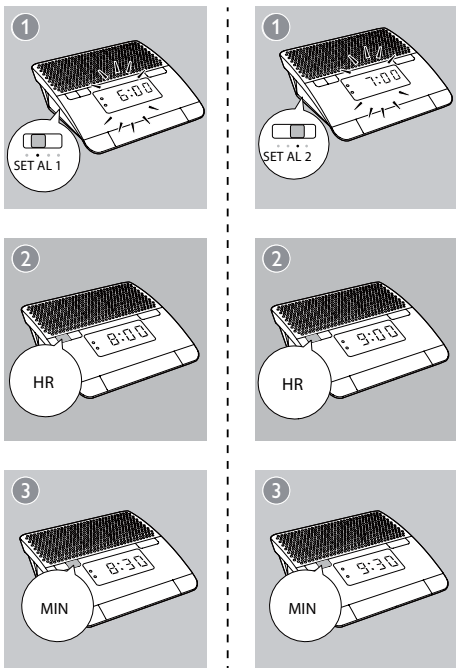
- The gentle wake-up function is available for buzzer only.



Set alarm

Follow the illustration to set the alarm.

- **AL1:** Set the first alarm.
- **AL2:** Set the second alarm.



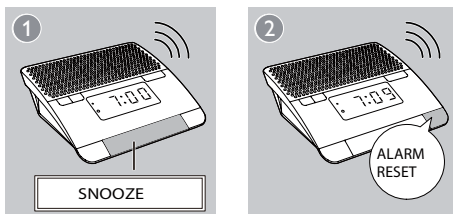
Deactivate the alarm timer

Switch **AL1** or **AL2** to **OFF** to deactivate the alarm clock.

- ↳ If the alarm timer is deactivated, the alarm indicator turns off.

Snooze the alarm

- 1 When alarm sounds, press **SNOOZE**.
 - ↳ The alarm snoozes and repeats ringing nine minutes later.
- 2 To reset the alarm, press **ALARM RESET**.
 - ↳ The alarm repeats ringing for the next day.



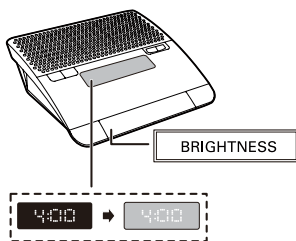
Select an alarm source

To select the last heard channel or buzzer as the alarm sound:

- **AL1:** Switch the slider to **RADIO** or **BUZ**.
- **AL2:** Switch the slider to **RADIO** or **BUZ**.
 - ↳ The corresponding alarm icon lights up.

6 Other features

Adjust brightness



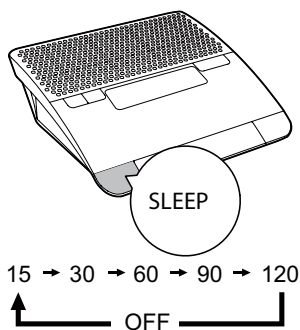
Set sleep timer

1 Press **SLEEP** repeatedly to set the sleep time.
↳ The radio turns on automatically.

2 To check the remaining sleep time, press **SLEEP** again.

To deactivate the sleep timer:

- Press **SLEEP** repeatedly until **[OFF]** appears.



Charge your mobile phone

You can use this device to charge your mobile phone.

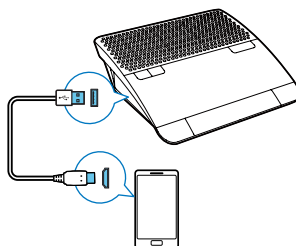
Note

- Make sure that the USB socket and the Micro USB are used only for charging.
- The USB charging and Micro USB charging are available when AC power is connected.

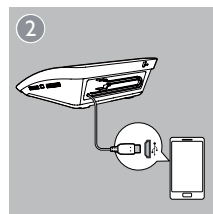
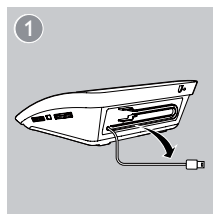
Option 1 :USB socket

Note

- The USB cable is not supplied.
- Some USB cables may not work with this device due to different materials and product techniques.



Option 2 : Micro USB



7 Product information

Note

- Product information is subject to change without prior notice.

General information

AC power (power adapter)	Brand name: Philips Model: AS100-065-AB130 Input: 100-240V~ 50/60 Hz, 0.5 A Output: 6.5 V = 1.3 A
Battery power	9 V
Operation Power Consumption	11 W
Standby Power Consumption	< 1 W
USB Charge voltage	DC 5V
Micro USB Charge voltage	DC 5V
Dimensions - Main Unit (W x H x D)	173 x 64 x 159 mm
Weight - Main Unit	0.5 kg

Tuner (FM)

Tuning Range	87.5 - 108MHz
Sensitivity - Mono, 26dB S/N Ratio	<22 dBf
Total Harmonic Distortion	<3%
Signal to Noise Ratio	>45dB

Amplifier

Rated Output Power	300mW RMS
--------------------	-----------

8 Troubleshooting

Warning

- Never remove the casing of this apparatus.

To keep the warranty valid, never try to repair the system yourself.

If you encounter problems when using this apparatus, check the following points before requesting service. If the problem remains unsolved, go to the Philips web site (www.philips.com/support). When you contact Philips, ensure that the apparatus is nearby and the model number and serial number are available.

No power

- Ensure that the AC power plug of the unit is connected properly.
- Ensure that there is power at the AC outlet.

No sound

- Adjust the volume.

No response from the unit

- Disconnect and reconnect the AC power plug, then turn on the unit again.

No charging

- Use the USB cable bypacked with your device for charging.

Poor radio reception

- Increase the distance between the unit and your TV or VCR.
- Fully extend the FM antenna.

Alarm does not work

- Set the clock/alarm correctly.

Clock/alarm setting erased

- Power has been interrupted or the power plug has been disconnected.
- Back up battery is used up.
- Reset the clock/alarm.

9 Notice

Any changes or modifications made to this device that are not expressly approved by Philips Consumer Lifestyle may void the user's authority to operate the equipment.

Disposal of your old product and batteries

Your product is designed and manufactured with high quality materials and components, which can be recycled and reused.

Never dispose of your product with other household waste. Please inform yourself about the local rules on the separate collection of electrical and electronic products and batteries. The correct disposal of these products helps prevent potentially negative consequences on the environment and human health.

Your product contains batteries, which cannot be disposed of with normal household waste. Please inform yourself about the local rules on separate collection of batteries. The correct disposal of batteries helps prevent potentially negative consequences on the environment and human health.

Please visit www.recycle.philips.com for additional information on a recycling center in your area.

Environmental information

All unnecessary packaging has been omitted. We have tried to make the packaging easy to separate into three materials: cardboard (box), polystyrene foam (buffer) and polyethylene (bags, protective foam sheet.)

Your system consists of materials which can be recycled and reused if disassembled by a specialized company. Please observe the local regulations regarding the disposal of packaging materials, exhausted batteries and old equipment.

Copyright

2013 © Koninklijke Philips Electronics N.V. Specifications are subject to change without notice. Trademarks are the property of Koninklijke Philips Electronics N.V or their respective owners. Philips reserves the right to change products at any time without being obliged to adjust earlier supplies accordingly.



Specifications are subject to change without notice
© 2013 Koninklijke Philips Electronics N.V.
All rights reserved.

AJ4000B_93_UM_V1.0

