

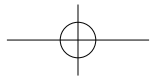
Register your product and get support at
www.philips.com/welcome

DVP3888K

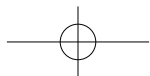


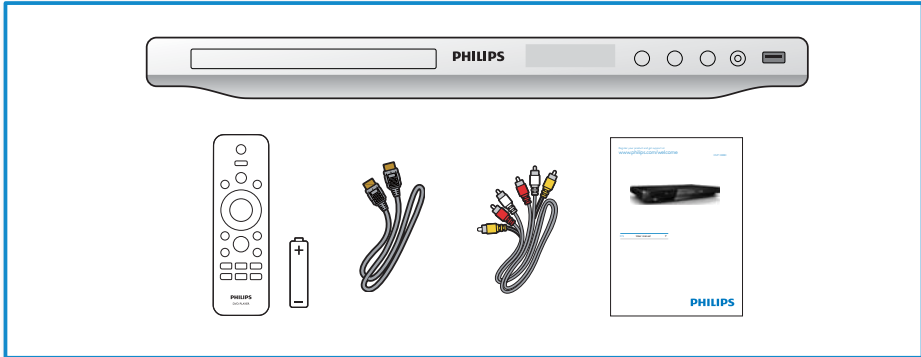
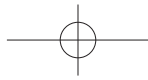
EN User manual

PHILIPS

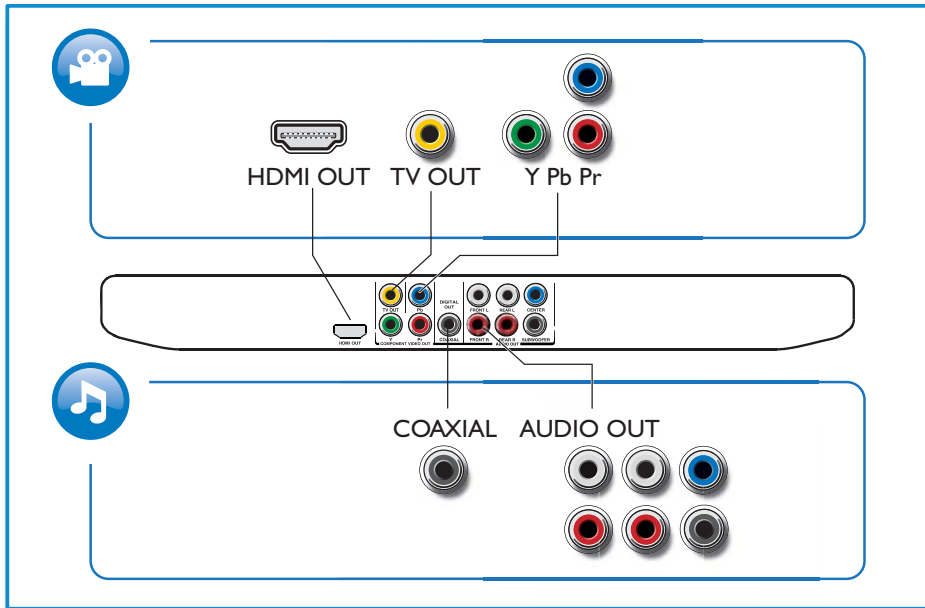


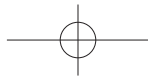
EN Please refer to the safety information before using the product.



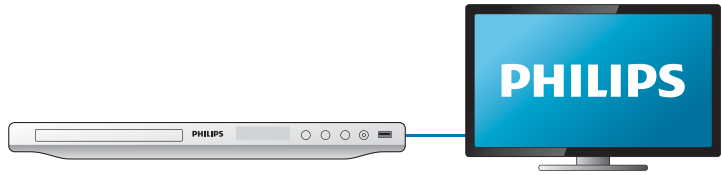


1





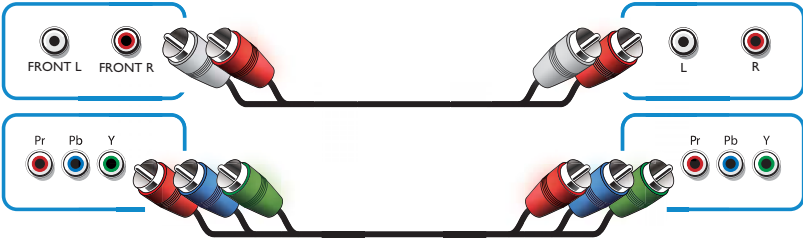
2

HDMI OUT



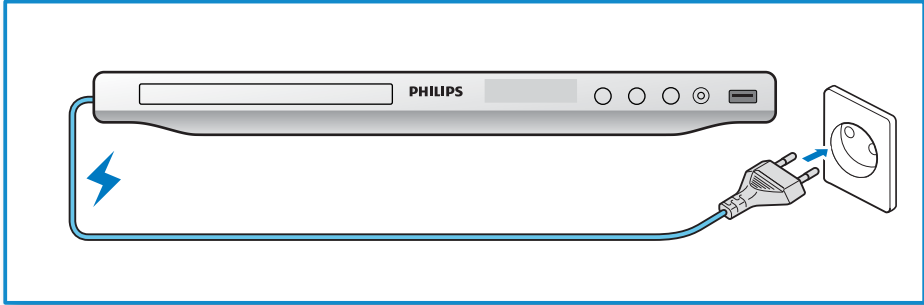
Pr Pb Y + FRONT L/R



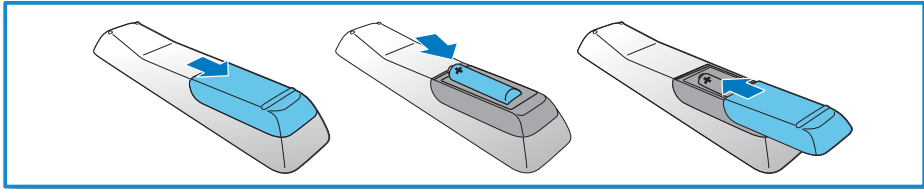
TV OUT + FRONT L/R



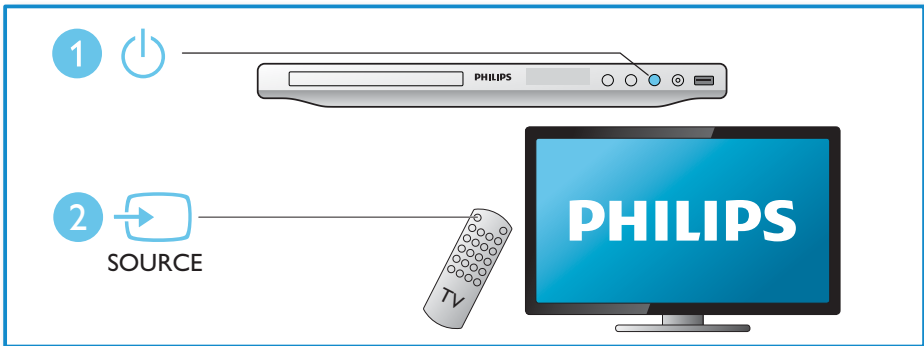
3



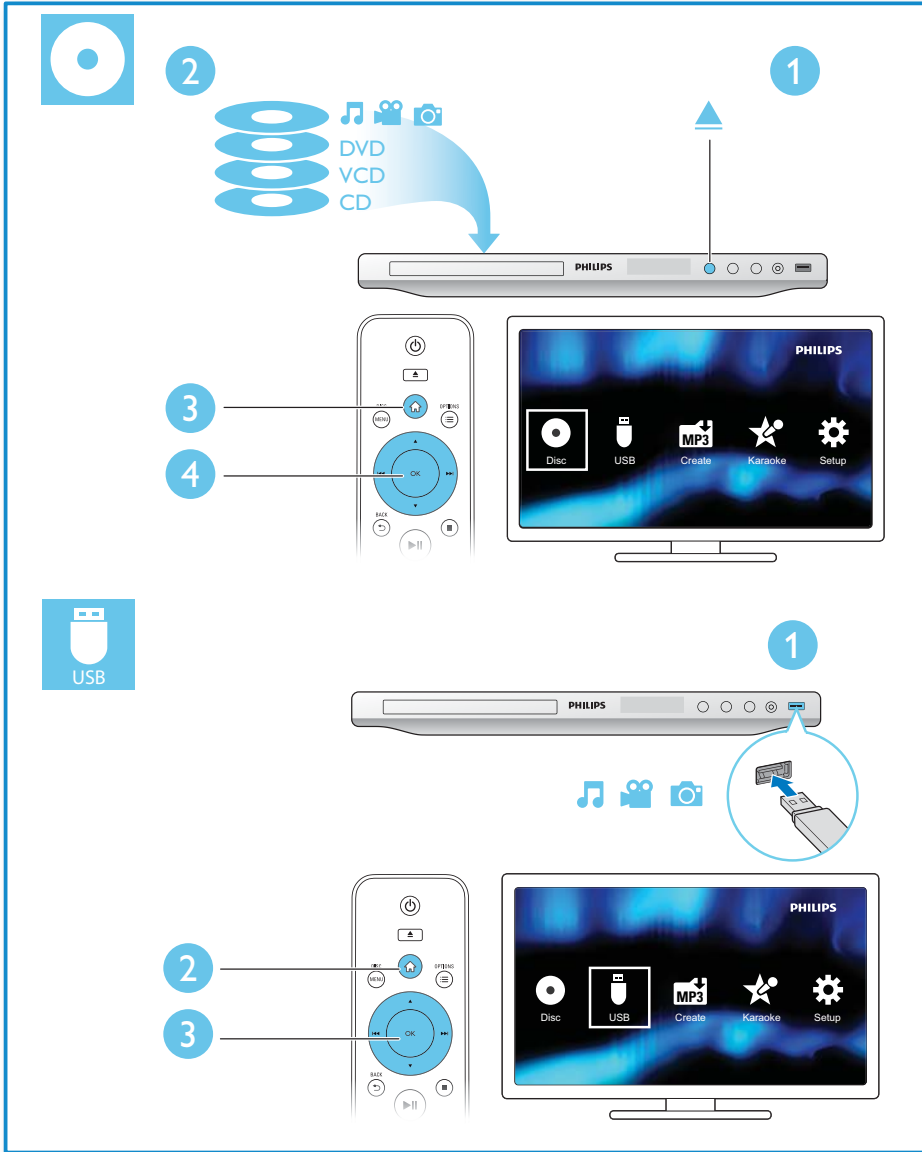
4

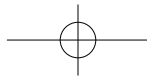


5



6





Contents

English

Connect and play	3
Safety.....	8
Control and play.....	9
Photo and music slideshow	11
Convert audio CD to MP3 files.....	12
Karaoke.....	13
Options	15
Philips EasyLink.....	16
Setup	17
General setup	18
Video setup.....	19
Audio setup	20
Preference.....	21
Software update	23
Troubleshooting.....	24
Specifications.....	26
Notice.....	28



Safety

Read and understand all instructions before you use this DVD player. If damage is caused by failure to follow the instructions, the warranty does not apply.

Risk of electric shock or fire!

- Never expose the product and accessories to rain or water. Never place liquid containers, such as vases, near the product. If liquids are spilt on or into the product, disconnect it from the power outlet immediately. Contact Philips Consumer Care to have the product checked before use.
- Never place the product and accessories near naked flames or other heat sources, including direct sunlight.
- Never insert objects into the ventilation slots or other openings on the product.
- Where the mains plug or an appliance coupler is used as the disconnect device, the disconnect device shall remain readily operable.
- Disconnect the product from the power outlet before lightning storms.
- When you disconnect the power cord, always pull the plug, never the cable.

Risk of short circuit or fire!

- Before you connect the product to the power outlet, ensure that the power voltage matches the value printed on the back of the product. Never connect the product to the power outlet if the voltage is different.
- Never expose the remote control or batteries to rain, water or excessive heat.
- Avoid force coming onto power plugs. Loose power plugs can cause arcing or fire.

Risk of injury or damage to the product!

- Visible and invisible laser radiation when open. Avoid exposure to beam.
- Do not touch the disc optical lens inside the disc compartment.
- Never place the product or any objects on power cords or on other electrical equipment.
- If the product is transported in temperatures below 5°C, unpack the product and wait until its temperature matches room temperature before connecting it to the power outlet.

Risk of overheating!

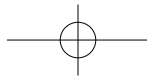
- Never install this product in a confined space. Always leave a space of at least four inches around the product for ventilation. Make sure that curtains or other objects never cover the ventilation slots on the product.

Risk of contamination!

- Remove the battery if it is exhausted or if the remote control is not to be used for an extended period of time.
- Batteries contain chemical substances, they should be disposed of properly.

Risk of swallowing batteries!

- The product/remote control may contain a coin type battery, which can be swallowed. Keep the battery out of reach of children at all times!

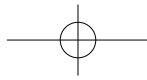


Control and play








Note

- When "X" appears, it means that this operation is unavailable for the current media or at the current time.

Media	Function	Buttons / Actions
	Stop the play	■
	Pause or resume the play	▶
	Skip to the previous/next title, chapter, track, or file	◀ ▶
	Select an audio language or audio channel	AUDIO
	Select a subtitle language	SUBTITLE
	Return to the home page	⬆
	Return to the root menu	↶ BACK
	Return to the disc menu	DISC MENU
	Enable or disable the PBC (playback control) feature	DISC MENU
	Select a repeat mode	1) Press REPEAT/REPEAT A-B . 2) Press ◀◀/▶▶.
	Repeat a specific section within a track	1) Press REPEAT/REPEAT A-B twice to select the start point. 2) Press REPEAT/REPEAT A-B again to select the end point. • To resume the normal play, press REPEAT/REPEAT A-B.
	Skip to a title or chapter	1) Press GOTO. 2) Press ▲ / ▼ to enter the title/chapter number. 3) Press OK to confirm.



Control and play

Media	Function	Buttons / Actions
	Skip to a track	<ol style="list-style-type: none"> 1) Disable PBC. 2) Press GOTO. 3) Press ▲ / ▼ to enter the track number. 4) Press OK to confirm.
	Search backward/forward fast	Press ◀◀ / ▶▶ repeatedly to select a speed.
	Search forward slowly	Press ▲ repeatedly to select a speed.
	Search backward slowly	Press ▼ repeatedly to select a speed.
	Zoom in or out	Press [Z] . <ul style="list-style-type: none"> • To pan through an enlarged photo or video image, press ▲ / ▼ / ◀◀ / ▶▶.
	Rotate a photo	Press ▲ / ▼ / ◀◀ / ▶▶.
	Switch between Fun Mode (pictures in color) and Simple Mode (pictures in black and white)	Press DISC MENU during photo slideshow.

Note

- You can only play DivX videos that were rented or purchased with DivX® registration code of this player. (Refer to "Setup" > "General Setup" > [DivX(R) VOD Code])
- Subtitle files with the following filename extensions (.srt, .smi, .sub, .ssa, .ass, .txt) are supported but not displayed in the file list.
- The subtitle filename has to be the same as the filename of the DivX video (the file extension excluded).
- The DivX video file and the subtitle file must be saved under the same directory.

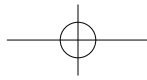
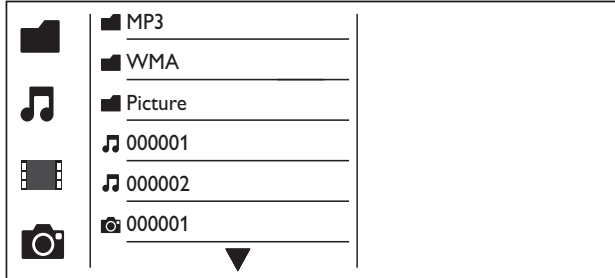


Photo and music slideshow



- 1 Press **▲** / **▼** to select **■**, and then press **OK**.
↳ All supported folders and files are listed.
- 2 Press **▲** / **▼** to select a music file, and then press **OK** to start playing.
 - If the music file is saved in a folder or sub-folder, access its directory first.
- 3 Press **▲** / **▼** to select a picture file, and then press **OK** to start the slideshow.
 - If the picture file is saved in a folder or sub-folder, access its directory first.
 - To stop the slideshow, press **■**.
 - To stop the music, press **■** again.

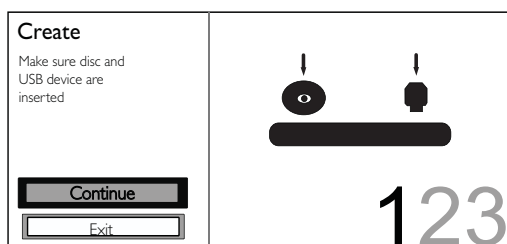
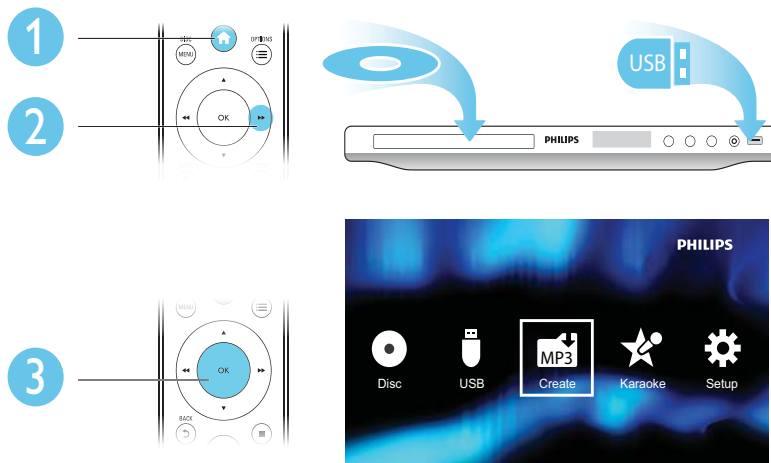


Note

- Music and picture files must be stored on the same disc or USB storage device.
- If a large number of files are compiled onto one disc or USB storage device, it requires longer time to read and display the content.
- This player can only display digital camera pictures with JPEG-EXIF format, which is widely used in digital cameras. It cannot display Motion JPEG, nor pictures in formats other than JPEG. Sound clips associated with pictures cannot be displayed either.
- If a JPEG picture is not recorded as an "exif" type file, its thumbnail picture is displayed as "blue mountain".



Convert audio CD to MP3 files

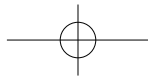


Follow the on-screen instructions to complete the process.

↳ The created MP3 files are saved in a folder named “_PHILIPS”.

Note

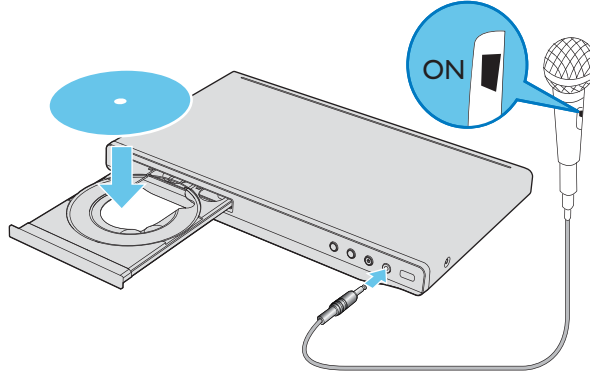
- DTS CDs and copy-protected CDs cannot be converted.
- A write-protected or encrypted USB storage device cannot be used to store MP3 files.



Karaoke

English

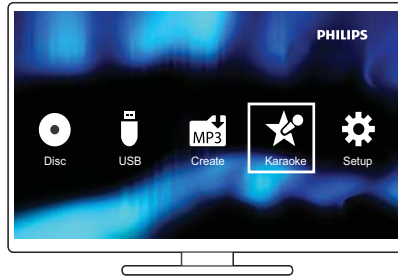
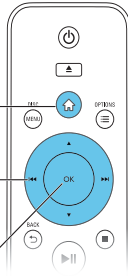
1




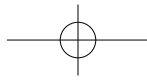
2

3

4



 Karaoke	Microphone	• Off
	Mic Volume	
	Echo	
	Karaoke Scoring	
	Karaoke Idol	• Off
	Key Shift	
	Vocal	• No Vocal



Karaoke

[Microphone]

Enable or disable the Karaoke feature.



Note

- Before you change the other Karaoke settings, set this option to **[On]** first.

[Mic Volume]

Adjust the volume level of microphone input.

[Echo]

Adjust the echo level of microphone input.

[Karaoke Scoring]

Select a difficulty level to score your singing. After a song is end, the score is given.

[Karaoke Idol]

Have a Karaoke contest with your friends.

Enable this feature, and then follow the on-screen instructions to start the contest.

[Key Shift]

Increase or decrease the key level of music.

[Vocal]

Select or turn off lead vocals.

Record your songs

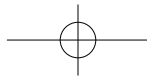
You can record your own songs onto a USB storage device. The recorded songs are saved as .MP3 files.

- 1 Insert a supported USB storage device.
- 2 Press **● KARAOKE**.
- 3 Follow the on-screen instructions to complete the settings.
- 4 Press **OK** to confirm the setting, and then start singing along with the accompaniment music.
 - ↳ The recording stops at the end of the song.
 - To exit the recording, press **● KARAOKE** again.



Note

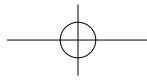
- Make sure that the USB storage device has enough memory remaining.
- Neither DTS discs nor copy-protected discs can be recorded.



Options

During play, press **OPTIONS** to access the following items.

Media	Setting item	Function
	[Info]	Display the play information.
	[PBC]	Enable or disable PBC.
	[Aspect ratio]	Select a display ratio of picture on TV.
	[Volume]	Adjust the volume level.
	[Angle]	Select an available camera angle.
	[Colour]	Select Fun Mode (photos in color) or Simple Mode (photos in black and white).
	[Photo preview]	Display the thumbnail of photos.
	[Mic]	Enable or disable the Karaoke feature.
	[Karaoke]	Increase or decrease the volume level and echo level of microphone input, and the key level of music.
	[Vocal]	Select or turn off lead vocals.



Philips EasyLink

This player supports Philips EasyLink which uses the HDMI CEC (Consumer Electronics Control) protocol. You can use a single remote control to control EasyLink compliant devices that are connected through HDMI.



Note

- Philips does not guarantee 100% interoperability with all HDMI CEC devices.

Make sure that HDMI CEC feature is enabled on the TV and other connected devices (see the user manual of the TV or other devices for details).

- 1 Press **⬆**.
- 2 Select **⚙**, and then press **OK**.
- 3 Select **[Video] > [HDMI Setup] > [EasyLink Setup]**.
- 4 Select **[On]** under the following options: **[EasyLink]**, **[1 Touch Play]**, and **[1 Touch Standby]**.
↳ EasyLink is enabled.

One Touch Play

When you play a disc, the TV automatically switches to the correct video input channel.

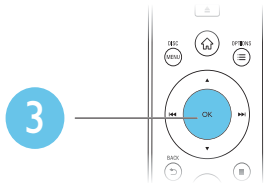
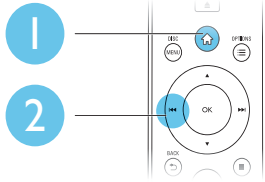
One Touch Standby

When you press and hold **⏻** (standby) on the remote control of this player, this player and all connected HDMI CEC devices (if they support one-touch standby) switches to standby simultaneously.



Setup

English



General	Disc Lock	• Unlock
	OSD Language	• Auto (ENG)
Video	Sleep Timer	• Off
	Auto Standby	• On
Audio	DivX(R) VOD Code	• Registration
	Preference	

- Press ▲ / ▼ to select a menu item or setting option.
- Press **OK** to access the lower-level menu or confirm the selected setting option.
- Press **↶ BACK** to return to the upper-level menu.



Note

- When a menu item is grayed out, it means that its setting cannot be changed at the current state.



Setup

General setup

General	Disc Lock	• Unlock
	OSD Language	• Auto (ENG)
Video	Sleep Timer	• Off
	Auto Standby	• On
Audio	DivX(R) VOD Code	• Registration
Preference		

[Disc Lock] - Restrict the play of a disc (maximum 20 discs can be locked).

- **[Lock]** - Lock the current disc. To play or unlock this disc, you must enter the password.
- **[Unlock]** - Play all discs.

[OSD Language] - Select a language for on-screen menu.

[Sleep Timer] - Set a period of time for the player to switch to Eco-power standby mode automatically.

[Auto Standby] - Enable this feature to automatically switch to Eco-power standby mode after 15 minutes of inactivity.

[DivX(R) VOD Code] - Display the DivX® registration code and deregistration code.



Note

- Go to www.divx.com/vod for how to register your player and rent or purchase DivX videos.
- DivX videos rented or purchased by this registration code can be played only on this player.

Play a locked disc

When you load a locked disc, **[Please enter password]** is displayed, and “0” is displayed as the first digit of the password.





- 1 Press ▲ / ▼ to set a value (0 to 9) to the first digit.
- 2 Press ►►.
- 3 Repeat steps 1 and 2 to enter the 6-digit password.
- 4 Press OK to confirm.



Tip

- Refer to “Setup” > “Preference” > **[Password]** for how to change the password.

Video setup

 General	TV System • PAL Aspect ratio • 4:3 Pan Scan
 Video	Progressive • Off Picture Setting • Standard
 Audio	HD JPEG • On
 Preference	HDMI Setup

[TV System] - Select a TV system that matches your TV. By default, this setting matches common TVs in your country.


[Aspect ratio] - Select a display ratio that matches your TV screen.

[Progressive] - Enable or disable the progressive scan mode on this player.

[Picture Setting] - Select a predefined setting for picture color; or customize the setting.

[HD JPEG] - Enable this feature to view high-definition pictures through HDMI connection.

[HDMI Setup] - Set the options for HDMI connection.

- **[Resolution]** - Select a resolution for high definition videos.
- **[HDMI Deep Color]** - Create vivid images with more color details when the video content is recorded in Deep Color and the TV supports this feature.
- **[Wide Screen]** - Select a display format for wide screen videos.
- **[EasyLink Setup]** - This player supports Philips EasyLink which uses the HDMI CEC (Consumer Electronics Control) protocol. You can use a single remote control to control EasyLink compliant devices that are connected through HDMI.
 - **[EasyLink]** - Enable or disable the EasyLink feature.
 - **[1 Touch Play]** - After you enable this feature, the connected HDMI CEC TV automatically switches to the HDMI input channel when you play a disc.
 - **[1 Touch Standby]** - After you enable this feature, you can press and hold  on the remote control of your player to switch all connected HDMI CEC devices to standby mode simultaneously.

Note

- Refer to "Philips EasyLink" for details.



Setup

Audio setup

General	Analogue Output	• Stereo
	Digital Audio	
Video	HDMI Audio	• On
	Audio Sync	
Audio	Volume	
	Sound Mode	
	Speaker Setup	
Preference	Night Mode	• Off

[Analogue Output] - Adjust this setting for audio output through **AUDIO OUT**.

- **[Stereo]** - Compress multi-channel Dolby digital sound to stereophonic sound output through **AUDIO OUT FRONT L/R**.
- **[LT/RT]** - Compress multi-channel Dolby digital sound to 2-channel surround sound output through **AUDIO OUT FRONT L/R**.
- **[Multi Channel]** - Enjoy Dolby digital sound output through **AUDIO OUT** 5.1 channels.

[Digital Audio] - Adjust this setting for audio output through **COAXIAL/DIGITAL OUT**.

- **[Digital Output]** - Select a type of digital output.
 - **[Off]** - Disable digital output.
 - **[All]** - Support multi-channel audio formats.
 - **[PCM Only]** - Downmix to two-channel audio signal.
- **[LPCM Output]** - Select the LPCM (Linear Pulse Code Modulation) output sampling rate.

Note

- **[LPCM Output]** setting is changeable only when **[Digital Output]** is set as **[PCM Only]**.
- The higher the sampling rate, the better the sound quality.

[HDMI Audio] - Enable or disable the audio output through HDMI cable.

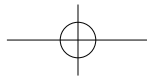
[Audio Sync] - Set a delay time for audio output when you play a video disc.

[Volume] - Set the default volume level.

[Sound Mode] - Select a preset sound effect.

[Speaker Setup] - Optimize the surround effect for the connected speaker system.

- **[Front Speaker]**, **[Center Speaker]** and **[Rear Speaker]**
 - Select **[Large]** when the speakers support the output of low frequency signal (lower than 120 Hz), otherwise select **[Small]**.
 - Select **[Off]** (This option is not available for **[Front Speaker]**) to mute the speaker(s).
- **[Subwoofer]** - Mute or unmute the subwoofer.
- **[Speakers Volume]** - Increase or decrease the volume level of each speaker.
- **[Speakers Delay]** - Set the delay time for each speaker.



[Night Mode] - Equalize loud sound and soft sound. Enable this feature to watch DVD movies at a low volume at night.

Note

- Applicable to Dolby Digital encoded DVD discs only.

Preference

General	Audio	• English
	Subtitle	• Off
Video	Disc Menu	• English
	Parental Control	• 8 Adult
Audio	PBC	• On
	Password	• Change
Preference	DivX Subtitle	• Standard
	Version Info	

[Audio] - Select an audio language.

[Subtitle] - Select a language for subtitle.

[Disc Menu] - Select a language for disc menu.

Note

- For some DVDs, the subtitle or audio language can only be changed from the disc menu.
- For a language that is not listed, select **[Others]**. Check the list of language codes (see **"Language Code"**), and then enter the respective language code. (Refer to **"Setup" > "General setup" > "Play a locked disc"** for how to enter the 4-digit code)

[Parental Control] - Select a rating level to restrict the play of discs to children. These discs must be recorded with rating levels.

Note

- To play a DVD disc that has a rating level higher than your setting, enter the password first. (Refer to **"Setup" > "General setup" > "Play a locked disc"** for details)
- The rating levels are country-dependent. To allow all discs to be played, select **[8 Adult]**.
- Some discs have ratings printed on but are not recorded with ratings. This function has no effect on such discs.

[PBC] - Enable or disable the PBC (playback control) feature.



Setup

[Password] - Change the password for playing discs that are locked or restricted with rating levels.



Note

- If you forget the password, enter "136900" before you set a new password.

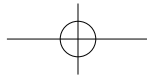
Change the password

- 1** Select **[Preference]** > **[Password]** > **[Change]**, and then press **OK**.
↳ The interface for changing password is displayed.
- 2** Press **OK** again.
↳ "0" is displayed behind **[Old Password]** as the first digit of old password.
- 3** Press **▲** / **▼** to set a value (0-9) to the first digit.
- 4** Press **▶▶**.
- 5** Repeat steps 3 and 4 to enter the 6-digit old password.
- 6** Repeat steps 3 and 4 to enter the new password behind **[New Password]**.
- 7** Repeat steps 3 and 4 to enter the new password behind **[Confirm PWD]**.

[DivX Subtitle] - Select a character set that supports the subtitle of your DivX video.

[Version Info] - Display the information about software version of this player.

[Default] - Reset all settings to factory default, except for the settings for **[Disc Lock]**, **[Parental Control]**, and **[Password]**.



Software update

English




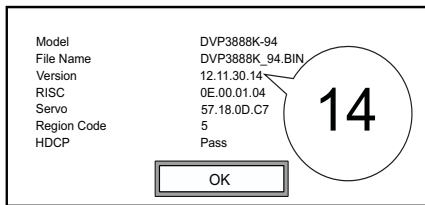
Note

- Power supply must not be interrupted during software update.

Check the current software version of this player, and then go to the Philips website for information about software update.

Check the current software version

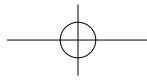
- 1 Press .
- 2 Select  and then press **OK**.
- 3 Select **[Preference] > [Version Info]**, and then press **OK**.



- 4 Write down the last two digits "XX" behind **[Version]** (for example, "14" in the graphic above).
↳ The version of current software is VXX.

Perform the update

- 1 Go to www.philips.com/support.
- 2 Search for support information with "DVP3888K/94" as the keywords.
- 3 Click the search result to display available support information.
- 4 Read the Firmware Upgrade Readme File and follow the instructions to complete the software update.



Troubleshooting



Warning

- Risk of electric shock. Never remove the casing of the player.

To keep the warranty valid, never try to repair the player yourself.

If you have problems using this player, check the following points before you request service. If you still have a problem, register your player and get support at www.philips.com/welcome.

If you contact Philips, you will be asked for the model and serial number of this player. The model number and serial number are on the back of this player. Write the numbers here:

Model No. _____

Serial No. _____

No picture.

- Refer to the TV user manual for how to select the correct video input channel.
- Switch to the default mode if the progressive scan setting or the TV system setting is changed.

No picture on HDMI connection.

- If this player is connected to an unauthorized display device, the audio/video signal cannot be output.
- If the HDMI cable is faulty, replace it with a new HDMI cable.
- If you have changed the setting for HDMI video resolution, switch to its default mode.

No sound output from the TV.

- Make sure that the audio cables are connected to the audio input sockets that are grouped with the selected video input sockets.

No sound on HDMI connection.

- If the connected device is non-HDCP compliant or only DVI-compatible, no sound can be heard from the HDMI output.
- Make sure that **[HDMI Audio]** is set to **[On]**.

No sound during DivX video playback.

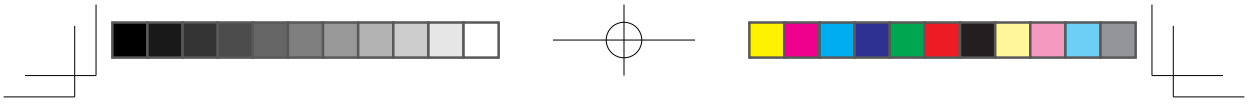
- The audio codes are not supported.

Disc or USB storage device cannot be read.

- Make sure that this player supports the disc or USB storage device.
(Refer to "**Specifications**" > "**Playable media**")
- For a recorded disc, make sure that the disc is finalized.

Recorded files (JPEG, MP3, WMA) cannot be played or read.

- Make sure that the file was recorded in the format of UDF, ISO9660, or JOLIET.
- Make sure that the number of files does not exceed the limitation (648 files maximum).
- Make sure that this player supports these files. (Refer to "**Specifications**" > "**Playable media**")



DivX video files cannot be played.

- Make sure that the DivX video file is complete and the file extension is correct.
- DRM-protected video files that are stored on a USB flash drive cannot be played through an analog video connection (for example, composite, component, and scart). Transfer the video content onto a supported disc, or use an HDMI connection to play these files.

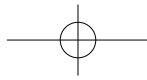
DivX subtitles are not displayed correctly.

- Make sure that the subtitle filename is the same as the video filename.
- Make sure that the DivX video file and the subtitle file are saved under the same directory.
- Select the character set that supports the subtitle. (Refer to **[Preference] > [DivX Subtitle]**)

EasyLink does not work.

- Make sure that EasyLink feature is enabled on the TV.
- Make sure the settings for **[EasyLink]** are correct.





Specifications



Note

- Specifications are subject to change without notice.

DVD region code	Countries
	India



Playable media

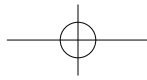
- **Disc**
 - DVD, DVD-Video, VCD, SVCD, Audio CD
 - DVD+R/+RW, DVD-R/-RW, DVD+R/-R DL (Dual Layer), CD-R/-RW (Maximum number of files: 648)
- **File**
 - Video: .avi, .divx, .mp4, .xvid
 - Audio: .mp3, .wma
 - Picture: .jpg, .jpeg
- **USB storage device**
 - Compatibility: Hi-Speed USB (2.0)
 - Class support: MSC (Mass Storage Class)
 - File system: FAT16, FAT32
 - Maximum number of albums/folders: 300
 - Maximum number of tracks/titles: 648

Video

- Signal system: PAL, NTSC
- Composite video output: 1 Vp-p (75 Ohm)
- Component video output: 0.7 Vp-p (75 Ohm)
- HDMI output: 480i, 480p, 576i, 576p, 720p, 1080i, 1080p

Audio

- 2-channel analog output
 - Front L&R : 2 Vrms (47k Ohm)
- 5.1-channel analog output
 - Front L&R : 2 Vrms (47k Ohm)
 - Center: 2 Vrms (47k Ohm)
 - Subwoofer: 1.15 Vrms (47k Ohm)
 - Rear L&R: 2 Vrms (47k Ohm)
- Digital output: 0.5 Vp-p (75 Ohm)
 - Coaxial



- HDMI output
- Sampling frequency:
 - MP3: 8 kHz, 11 kHz, 12 kHz, 16 kHz, 22 kHz, 24 kHz, 32 kHz, 44.1 kHz, 48 kHz
 - WMA: 44.1 kHz, 48 kHz
- Constant bit rate:
 - MP3: 8 kbps - 320 kbps
 - WMA: 64 kbps - 192 kbps

Main unit

- Dimensions (W x H x D): 360 x 42 x 209 (mm)
- Net Weight: 1.35 kg

Power

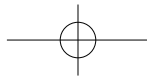
- Power supply rating: 110–240 V~, 50/60 Hz
- Power consumption: < 10 W
- Power consumption in standby mode: < 0.4 W

Accessories supplied

- Remote control and one battery
- HDMI cable
- Audio/Video cables
- User Manual

Laser specification

- Type: Semiconductor laser InGaAlP (DVD), AlGaAs (CD)
- Wave length: 658 nm (DVD), 790 nm (CD)
- Output Power: 7.0 mW (DVD), 10.0 mW (VCD/CD)
- Beam divergence: 60 degrees



Notice

Care for your product

- Do not insert any objects other than discs into the disc compartment.
- Do not insert warped or cracked discs into the disc compartment.
- Remove the discs from the disc compartment if you are not using the product for an extended period of time.
- Only use microfiber cloth to clean the product.

Care of the environment



Your product is designed and manufactured with high quality materials and components, which can be recycled and reused.



When this crossed-out wheeled bin symbol is attached to a product it means that the product is covered by the European Directive 2002/96/EC.

Please inform yourself about the local separate collection system for electrical and electronic products. Please act according to your local rules and do not dispose of your old products with your normal household waste. Correct disposal of your old product helps to prevent potential negative consequences for the environment and human health.



Your product contains batteries covered by the European Directive 2006/66/EC, which cannot be disposed with normal household waste. Please inform yourself about the local rules on separate collection of batteries because correct disposal helps to prevent negative consequences for the environmental and human health.

Compliance

This apparatus includes this label:

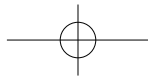


Copyright



Be responsible
Respect copyrights

This item incorporates copy protection technology that is protected by U.S. patents and other intellectual property rights of Rovi Corporation. Reverse engineering and disassembly are prohibited.



2011 © Koninklijke Philips Electronics N.V.

Specifications are subject to change without notice. Trademarks are the property of Koninklijke Philips Electronics N.V or their respective owners. Philips reserves the right to change products at any time without being obliged to adjust earlier supplies accordingly.

Warranty

- Risk of injury, damage to the player or void of warranty! Never attempt to repair the player yourself.
- Use the player and accessories only as intended by the manufacturer. The caution sign printed on the back of the player indicates risk of electric shock.
- Never remove the player cover. Always contact Philips Customer Support for service or repairs.
- Any operation expressly prohibited in this manual, or any adjustments and assembly procedures not recommended or authorized in this manual shall void the warranty.

Trademark



ABOUT DIVX VIDEO: DivX® is a digital video format created by DivX, Inc. This is an official DivX Certified device that plays DivX video. Visit www.divx.com for more information and software tools to convert your files into DivX video.

ABOUT DIVX VIDEO-ON-DEMAND: This DivX Certified® device must be registered in order to play DivX Video-on-Demand (VOD) content. To generate the registration code, locate the DivX VOD section in the device setup menu. Go to vod.divx.com with this code to complete the registration process and learn more about DivX VOD.

DivX®, DivX Certified® and associated logos are registered trademarks of DivX, Inc. and are used under license.



Manufactured under license from Dolby Laboratories. Dolby and the double-D symbol are trademarks of Dolby Laboratories.



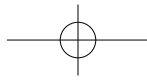
HDMI, the HDMI logo, and High-Definition Multimedia Interface are trademarks or registered trademarks of HDMI licensing LLC in the United States and other countries.



'DVD Video' is a trademark of DVD Format/Logo Licensing Corporation.



Manufactured under license from DTS Licensing Limited. DTS, the Symbol, & DTS and the Symbol together are registered trademarks & DTS Digital Out is a trademark of DTS, Inc. Product includes software. © DTS, Inc. All Rights Reserved.



WARRANTY

This APPARATUS IS covered under warranty against any defect arising out of faulty or defective material or workmanship for a period of 6 months from date of purchase.

Should a defect develop during the period of warranty, Philips Electronics India Limited undertakes to repair the apparatus free of charge through an Authorised Philips service Center. If the purchaser shifts his residence to other town, the warranty will be valid at the nearest Authorised Philips service Center.

This warranty is not valid in case:

1. The apparatus is not used according to this manual;
2. Defects are caused by improper or reckless use;
3. Any repair work are done by person other than Authorised Philips Service Center;
4. Any modification or alteration of any nature are made in the apparatus;
5. The serial number is tampered
6. This warranty form is not completed immediately after purchase.

Serial No.: _____
 Bill No & Date of Purchase: _____
 Purchaser's Name: _____
 Location & Tel No: _____
 Dealer's Name: _____
 Location & Tel No: _____
 Dealer's Stamp & Sign: _____

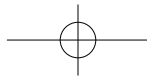
Maintenance Tips for your DVD Player:

- Always keep a Disc loaded in your DVD Player tray.
- Keep the player away from the dusty areas. Keep it covered with a dust cover.
- Clean your DVD Player Lens after every 20 discs played.
 - Use the 2 brush Philips DVD Lens Cleaner SVC2520 for best results.
- Clean the CDs / VCD / DVD / MP3 CD before inserting in your DVD Player.

"For unlimited listening pleasure use Philips earphones / headphones". Over 20 models to choose from

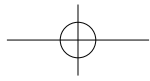
Philips Electronics India Limited

For any sales or service related queries:
 Visit us on web at www.philips.com/support or
 Call us on Tel No. 1860-180-1111
 1800-102-2929
 "standard call rates apply"
 Email: customercare.india@philips.com



Language code

Abkhazian	6566	Inupiaq	7375	Pushto	8083
Afar	6565	Irish	7165	Russian	8285
Afrikaans	6570	Íslenska	7383	Quechua	8185
Amharic	6577	Italiano	7384	Raeto-Romance	8277
Arabic	6582	Ivrit	7269	Romanian	8279
Armenian	7289	Japanese	7465	Rundi	8278
Assamese	6583	Javanese	7486	Samoaan	8377
Avestan	6569	Kalaallisut	7576	Sango	8371
Aymara	6589	Kannada	7578	Sanskrit	8365
Azerhajani	6590	Kashmiri	7583	Sardinian	8367
Bahasa Melayu	7783	Kazakh	7575	Serbian	8382
Bashkir	6665	Kernewek	7587	Shona	8378
Belarusian	6669	Khmer	7577	Shqip	8381
Bengali	6678	Kinyarwanda	8287	Sindhi	8368
Bihari	6672	Kirghiz	7589	Sinhalese	8373
Bislama	6673	Komi	7586	Slovensky	8373
Bokmål, Norwegian	7866	Korean	7579	Slovenian	8376
Bosanski	6683	Kuanyama; Kwanyama	7574	Somali	8379
Brezhoneg	6682	Kurdish	7585	Sotho; Southern	8384
Bulgarian	6671	Lao	7679	South Ndebele	7882
Burmese	7789	Latina	7665	Sundanese	8385
Castellano, Español	6983	Latvian	7686	Suomi	7073
Catalán	6765	Letzeburgesch;	7666	Swahili	8387
Chamorro	6772	Limburgan; Limburger	7673	Swati	8383
Chechen	6769	Lingala	7678	Svenska	8386
Chewa; Chichewa; Nyanja	7889	Lithuanian	7684	Tagalog	8476
中文	9072	Luxembourgish;	7666	Tahitian	8489
Chuang; Zhuang	9065	Macedonian	7775	Tajik	8471
Church Slavic; Slavonic	6785	Malagasy	7771	Tamil	8465
Chuvash	6786	Magyar	7285	Tatar	8484
Corsican	6779	Malayalam	7776	Telugu	8469
Česky	6783	Maltese	7784	Thai	8472
Dansk	6865	Manx	7186	Tibetan	6679
Deutsch	6869	Maori	7773	Tigrinya	8473
Dzongkha	6890	Marathi	7782	Tonga (Tonga Islands)	8479
English	6978	Marshallese	7772	Tsonga	8483
Esperanto	6979	Moldavian	7779	Tswana	8478
Estonian	6984	Mongolian	7778	Türkçe	8482
Euskara	6985	Nauru	7865	Turkmen	8475
Ελληνικά	6976	Navaho; Navajo	7886	Twí	8487
Faroese	7079	Ndebele, North	7868	Uighur	8571
Français	7082	Ndebele, South	7882	Ukrainian	8575
Frysk	7089	Ndonga	7871	Urdu	8582
Fijian	7074	Nederlands	7876	Uzbek	8590
Gaelic; Scottish Gaelic	7168	Nepali	7869	Vietnamese	8673
Galleghan	7176	Norsk	7879	Volapuk	8679
Georgian	7565	Northern Sami	8369	Walloon	8765
Gikuyu; Kikuyu	7573	North Ndebele	7868	Welsh	6789
Guarani	7178	Norwegian Nynorsk;	7878	Wolof	8779
Gujarati	7185	Occitan; Provençal	7967	Xhosa	8872
Hausa	7265	Old Bulgarian; Old Slavonic	6785	Yiddish	8973
Herero	7290	Oriya	7982	Yoruba	8979
Hindi	7273	Oromo	7977	Zulu	9085
Hiri Motu	7279	Ossetian; Ossetic	7983		
Hrwatski	6779	Pali	8073		
Ido	7379	Panjabi	8065		
Interlingua (International)	7365	Persian	7065		
Interlingue	7365	Polски	8076		
Inuktitut	7385	Português	8084		



© 2011 Koninklijke Philips Electronics N.V.
All rights reserved.
DVP3888K_94_UM_V2.2

