

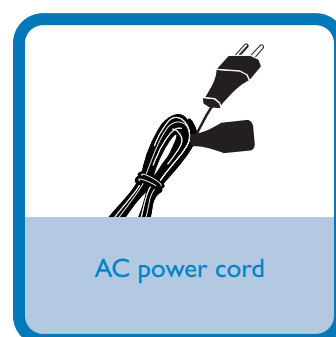
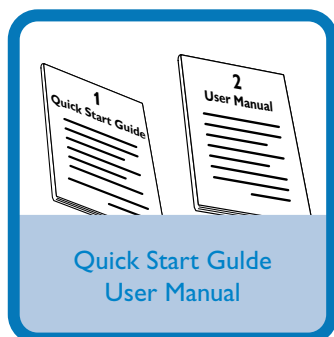
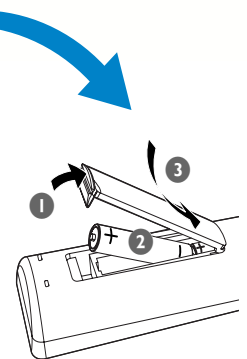
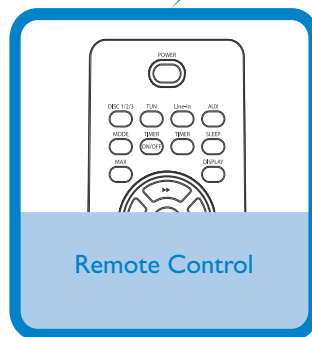
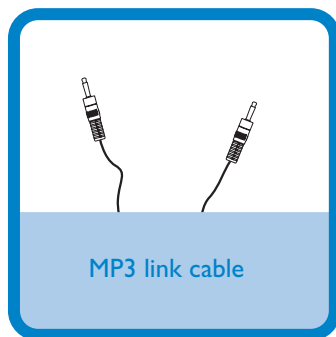
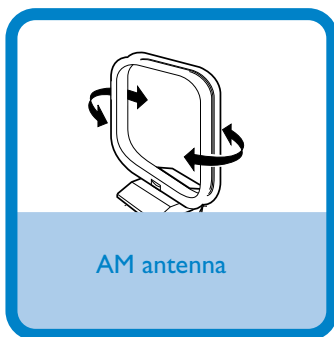
Quick start guide



- Step A **Connect**
- Step B **Setup**
- Step C **Enjoy**

What's in the Box?

You should find these items upon opening the box.

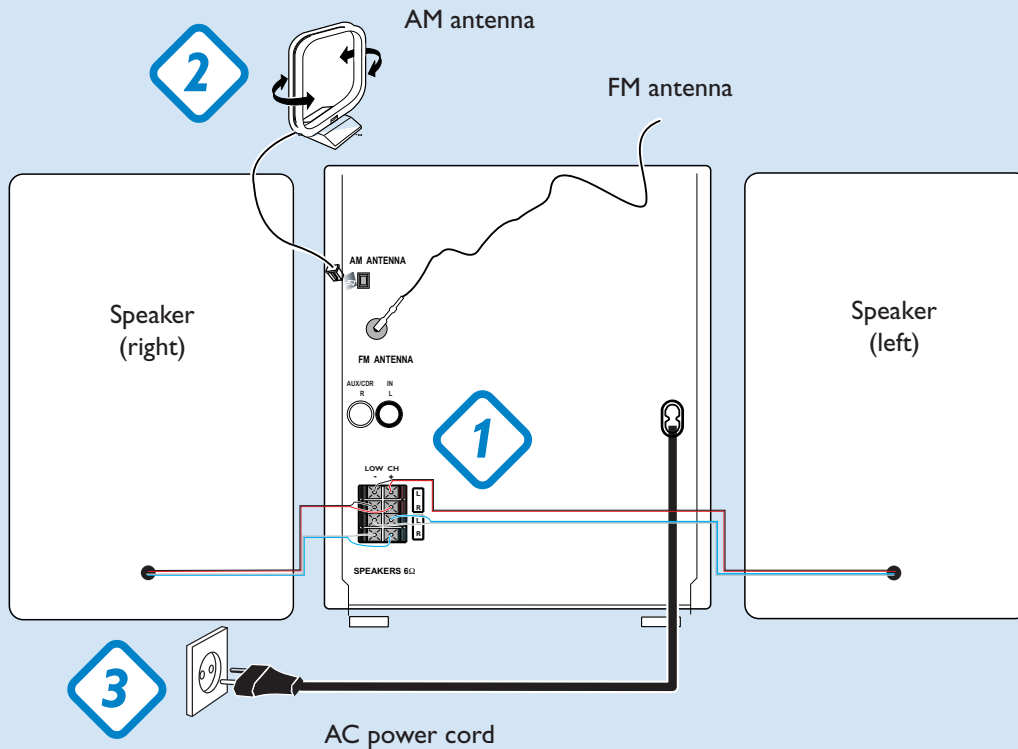


Step A *Connect*

- 1 Connect the speaker cables.
- 2 Connect the AM antenna.
- 3 Connect the power cable of the system.

Tip

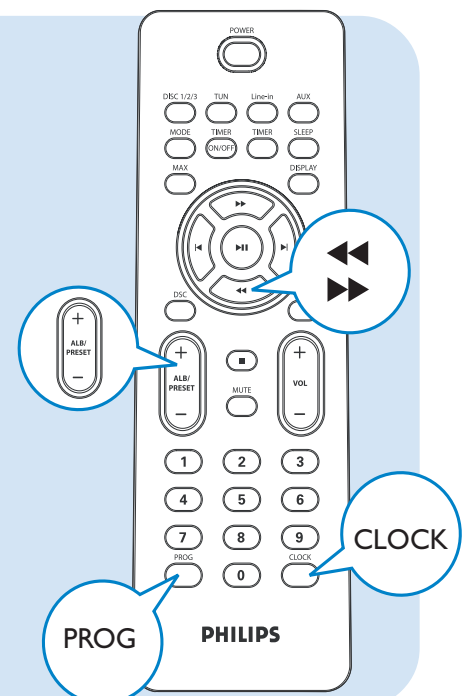
See the User Manual on how to connect other equipment to this system.



Step B *Setup*

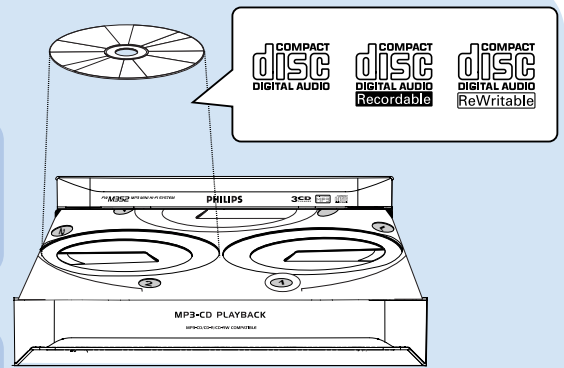
Setting the clock

- 1 In standby or view clock mode, press **CLOCK/TIMER** (or **CLOCK** on the remote control) once.
- 2 Press **PROG** to select clock mode. The clock can be set in either 12-hour or 24-hour mode.
- 3 Press **CLOCK/TIMER** (or **CLOCK** on the remote control) again to activate and adjust clock time.
- 4 Press **◀** or **▶** repeatedly to set the hour.
- 5 Press **ALBUM/PRESET +/-** (or **ALB/PRESET +/-** on the remote control) repeatedly to set the minute.
- 6 Press **CLOCK/TIMER** (or **CLOCK** on the remote control) again to store the setting.



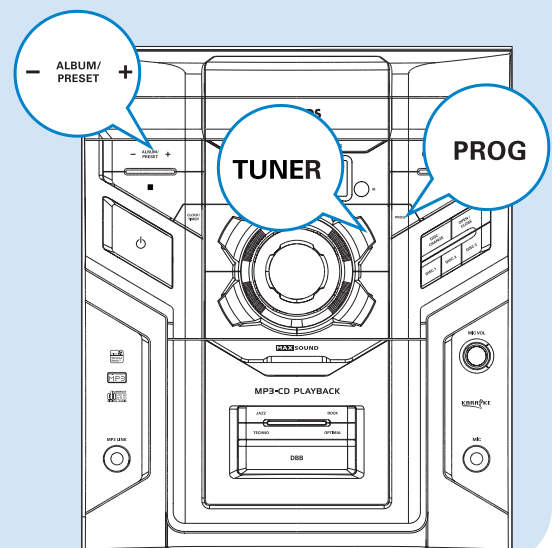
Playing a disc

- 1 Press **OPEN•CLOSE** to open the disc tray and load up to two discs on the individual disc trays. To load the third disc, press **DISC CHANGE**.
→ Make sure the label side of each loaded disc is facing up.
- 2 Press **OPEN•CLOSE** again to close the disc tray.
- 3 Use **DISC 1/2/3** to select a disc for playback.
- 4 To stop playback, press **■**.



Programming and tuning to radio stations

- 1 Press **TUNER** repeatedly (or **TUN** on the remote control) to select the tuner source.
- 2 Press **PROG** for more than two seconds to program all available stations in order of waveband.
- 3 Press **ALBUM/PRESET +/-** (or **ALB/PRESET +/-** on the remote control) until the desired preset station is displayed.



Tip

Detailed playback features and additional functions are described in the accompany owner's manual.

