

**PHILIPS**

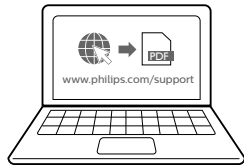
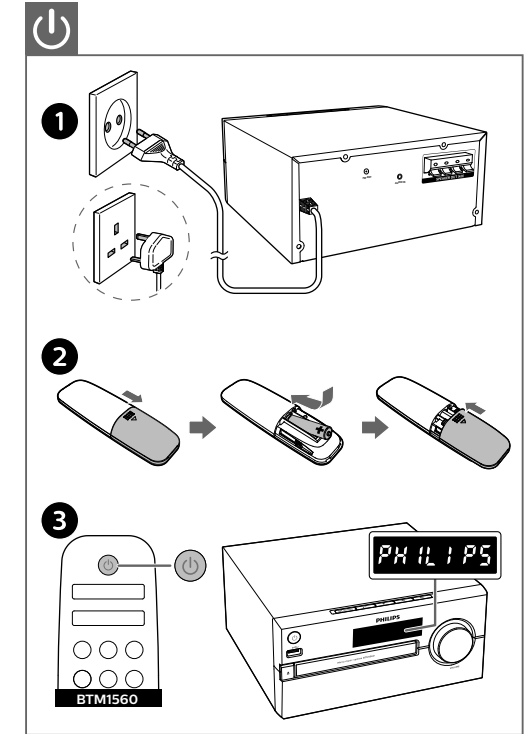
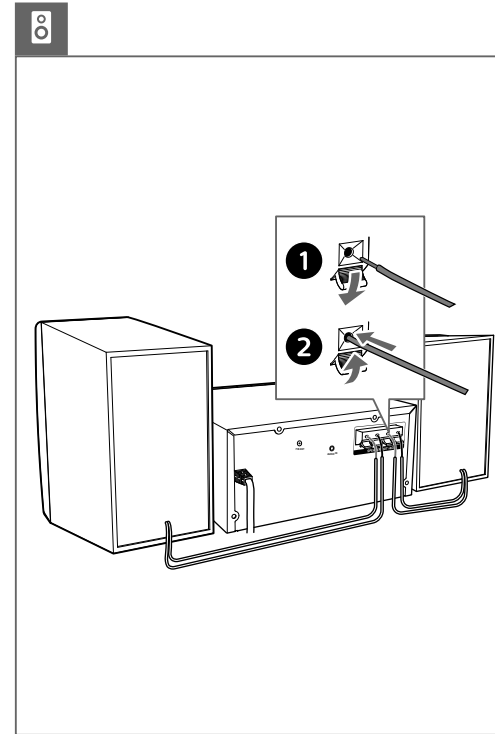
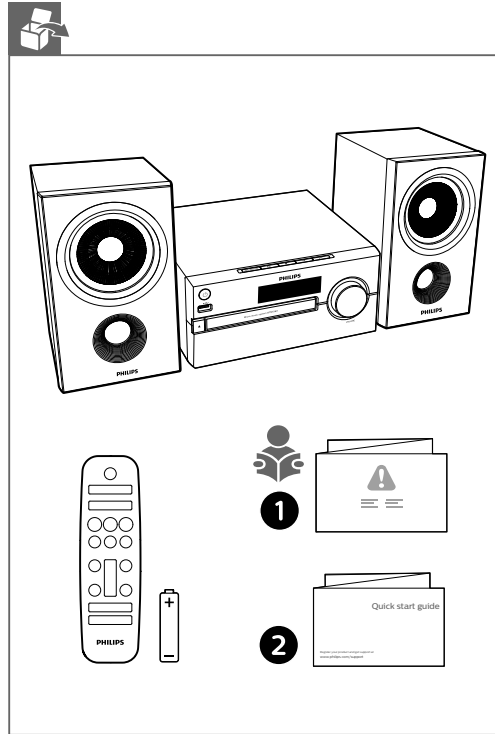
# Quick Start Guide

Micro music system

BTM1560



Register your product and get support at [www.philips.com/support](http://www.philips.com/support)



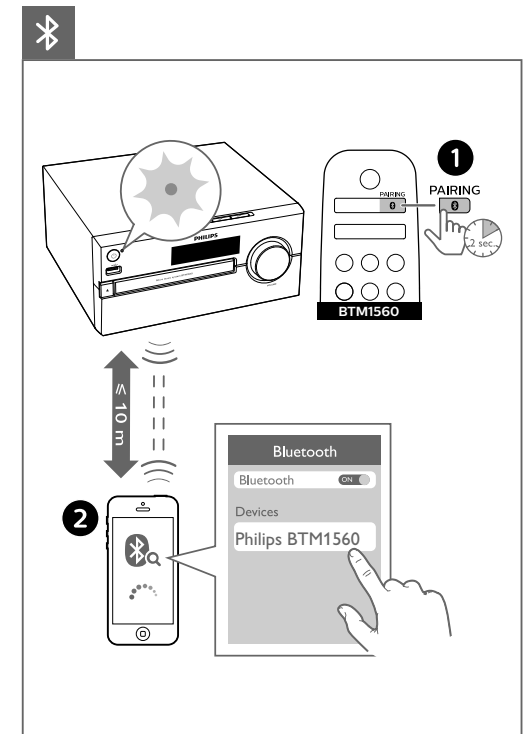
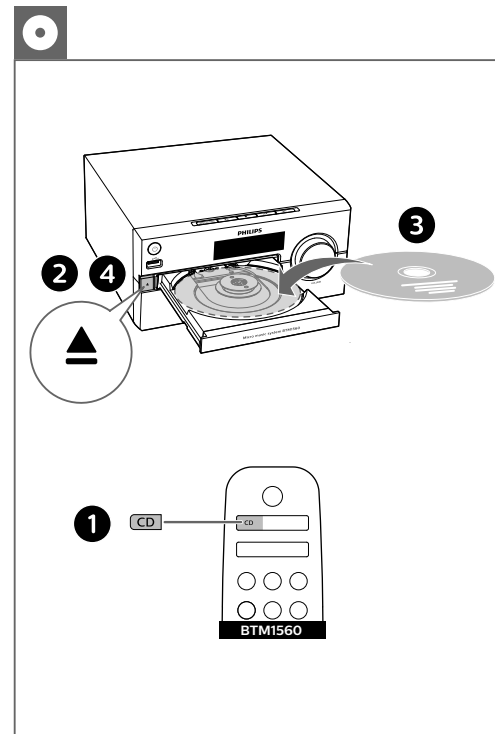
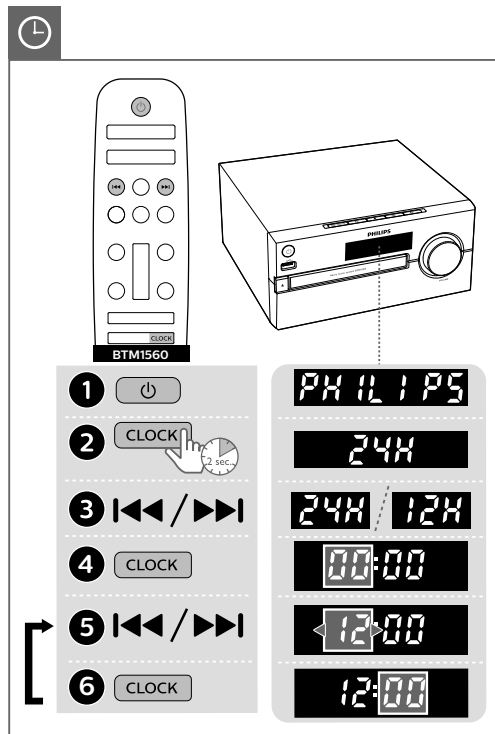
[www.philips.com/support](http://www.philips.com/support)



Specifications are subject to change without notice. This product has been manufactured by, and is sold under the responsibility of Gibson Innovations Ltd., and Gibson Innovations Ltd. is the warrantor in relation to this product. Philips and the Philips Shield Emblem are registered trademarks of Koninklijke Philips N.V. and are used under license.



BTM1560\_12\_QSG\_V2.0



**FM ANT**

**BTM1560**

- 1 FM
- 2 A |◀◀/▶▶|
- 2 B |◀◀/▶▶|

tuner  
87.75 MHz  
PROG  
98.70 MHz

**BTM1560**

- 1 FM
- 2 SCAN  
PROG
- 3 ▲/▼

tuner  
PROG  
98.70 MHz

**BTM1560**

- 1
- 2 AUDIO IN USB
- 3

**BTM1560**

**BTM1560**

- 1
- 2 AUDIO IN USB

AUDIO IN  
3.5MM STEREO

**SLEEP TIMER**

**BTM1560**

- 1
- 2 SLEEP TIMER
- 3 |◀◀/▶▶|
- 4 SLEEP TIMER
- 5 |◀◀/▶▶|
- 6 SLEEP TIMER
- 7 |◀◀/▶▶|
- 8 |◀◀/▶▶|
- 9 SLEEP TIMER

12:28  
00:00  
08:00  
08:00  
08:30  
USB  
8:15  
12  
t-07

**SLEEP TIMER**

**BTM1560**

SLEEP TIMER

120  
90  
60  
30  
15  
OFF

**BTM1560**

SLEEP TIMER

120  
90  
60  
30  
15  
OFF