



Philips Fidelio
Soundbar 5.1.2 with
wireless subwoofer

808 W max. Wireless subwoofer

Dolby Atmos. IMAX Enhanced
DTS Play-Fi compatible
Connects with voice assistants



B95

Stunning sound for every drama. Or song.

Experience your movies and music like never before. This Fidelio soundbar with wireless subwoofer brings new levels of detail to every scene and soundtrack. Plus, it's easy to make this soundbar part of your multi-room audio setup.

A seamless experience

- 4K pass-through. Dual HDMI inputs
- Effortless. From movie night to music
- Easily connect to your favourite sources
- Connects to your favourite voice assistant-enabled devices

New levels of detail for movies and music

- Play-Fi. From multi-room audio to surround sound
- HDMI eARC. Enjoy Dolby Atmos and DTS:X audio formats
- IMAX Enhanced. Immersive, heart-pounding audio
- Spotify Connect. Bluetooth. Apple AirPlay 2. Optical-in

Give your entertainment the sound it deserves

- 5.1.2 channels. 808 W max. 410 W RMS (1%THD)
- Philips Fidelio. Stunning sound with rich, deep bass
- Dedicated centre channel for crystal-clear dialogue
- Dolby Atmos and Dolby Surround. Heighten the excitement

PHILIPS

Soundbar 5.1.2 with wireless subwoofer

808 W max. Wireless subwoofer Dolby Atmos. IMAX Enhanced, DTS Play-Fi compatible, Connects with voice assistants

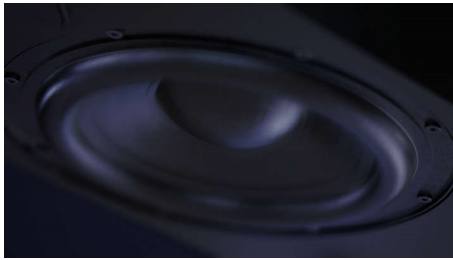
Highlights

Effortless connection



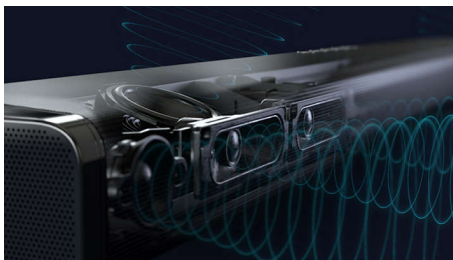
With a Philips Fidelio soundbar, nothing comes between you and the moment. Whether it's the seamless way you can switch between all of your favourite sources or connect to speakers in other rooms. Or the low-profile design that allows easy placement. Simply unpack, connect and enjoy.

Stunning sound. Rich deep bass



This soundbar creates a breathtaking sound experience. 5.1.2 channels fill any room with rich, deep soundtracks, thunderous effects and sparkling dialogue. The wireless subwoofer adds impact to every explosion and every beat.

Dolby Atmos and Dolby Surround



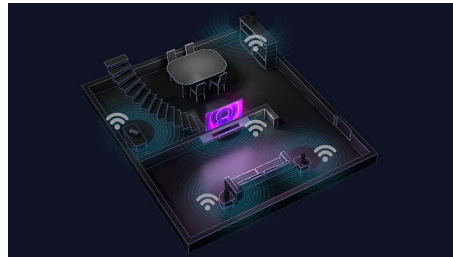
Get the full Dolby Atmos experience from this soundbar's up-firing speakers. Your favourite movies and shows will sound breathtakingly realistic as sound flows above and around you.

If you're watching non-Atmos content, the soundbar switches to Dolby Surround.

IMAX Enhanced

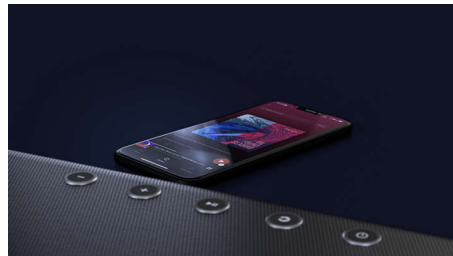
This powerful soundbar is certified IMAX Enhanced, which means that it's capable of delivering an audio experience that truly takes you to another world. The 240 W subwoofer looks great freestanding and the soundbar itself has a low profile for simple placement.

Play-Fi. Multi-room and more



Easy Play-Fi compatibility will make this soundbar the star of your multi-room set-up. You can sync Play-Fi-compatible speakers for multi-room audio or even create a true surround-sound system—all via the Philips Sound app or the Play-Fi app.

All of your favourite sources



For music, Spotify Connect lets you stream Spotify's best-quality signal over Wi-Fi. You can also stream hi-res playlists from your mobile device via Apple AirPlay 2 or Bluetooth. For movies and gaming, 4K pass-through lets you connect 4K HDR video sources with no loss of resolution.

B95/10

HDMI eARC



Lose nothing from the mix when you're immersed in the drama. This soundbar is compatible with HDMI eARC, a high-speed connection that lets you experience the full effect of advanced audio formats like Dolby Atmos and DTS:X. The soundbar also has dual HDMI inputs.

Connect with voice assistants



Ask Alexa-enabled devices, or any speaker that works with the Google Assistant, to play music through the soundbar. Prefer Siri? This soundbar works with Apple AirPlay 2, so you can ask her too. Turn the music up. Skip tracks. All completely hands-free.

4K pass-through. Dual HDMI-in

5.1.2 channels. 808 W max

5.1.2 channels. 808 W max. 410 W RMS (1%THD)

Dedicated centre channel

Dedicated centre channel for crystal-clear dialogue

Spotify Connect. Bluetooth.

Spotify Connect. Bluetooth. Apple AirPlay 2. Optical-in



Soundbar 5.1.2 with wireless subwoofer

808 W max. Wireless subwoofer Dolby Atmos. IMAX Enhanced, DTS Play-Fi compatible, Connects with voice assistants

Specifications

Sound

- Sound Enhancement: Movie, Music, Voice, Sport, Custom
- Sound System: Dolby Atmos®, DTS:X, IMAX Enhanced
- Total harmonic distortion: 1%
- Speaker system output power: 808 W MAX / 410 W RMS (1%THD)

Loudspeakers

- Subwoofer freq range: 35–150 Hz
- Subwoofer type: Active, Wireless subwoofer
- Subwoofer impedance: 3 ohm
- Number of sound channels: 5.1.2
- Number of woofers: 1
- Woofer diameter: 8"
- Soundbar freq range: 150–20k Hz
- Centre drivers: 2 full range (L+R)
- Front drivers: 4 full range (L+R), 2 tweeters (L+R)
- Side-firing drivers: 2 tweeters (L+R)
- Up-firing drivers: 2 full range (L+R)
- External subwoofer enclosure: Bass reflex

Connectivity

- Bluetooth: Receiver
- Bluetooth version: 4.2
- EasyLink (HDMI-CEC)
- Aux in: 3.5 mm
- Optical input x 1
- HDMI content protection: HDCP 1.4/2.3
- HDMI IN x 2
- HDMI Out (eARC/ARC) x 1
- Wi-Fi: IEEE 802.11 a/b/g/n/ac, 2.4 GHz/5 GHz
- DLNA Standard: No
- Multiple speaker connection
- Multiple speaker technology: DTS Play-Fi Multi-room
- Smart Home: Spotify Connect, Built-in Chromecast, Works with OK Google, Works with Alexa, Works with Apple AirPlay 2
- Wireless speaker connection: Subwoofer

Supported Audio Formats

- HDMI ARC/eARC: Dolby Atmos®, Dolby Digital, Dolby Digital EX, Dolby Digital plus, Dolby TrueHD, DTS, DTS 96/24, DTS Digital Surround (5.1-ch), DTS:X, DTS-ES, DTS-HD High Resolution Audio, DTS-HD Master Audio
- Play-Fi: AIFF, FLAC, MP3, WAV, MPEG4 AAC,

MPEG4 M4A

- Bluetooth: SBC
- HDMI IN1/IN2: Dolby Atmos®, Dolby Digital, Dolby Digital plus, Dolby TrueHD, Dolby Digital EX, DTS, DTS 96/24, DTS Digital Surround (5.1-ch), DTS:X, DTS-ES, DTS-HD High Resolution Audio, DTS-HD Master Audio
- Optical: Dolby Digital, LPCM 2ch

Outer Carton

- Length: 116.5 cm
- Number of consumer packages: 2
- Width: 53.5 cm
- Gross weight: 40.3 kg
- Height: 48 cm
- GTIN: 1 48 95229 11261 9
- Net weight: 27.74 kg
- Tare weight: 12.56 kg

Convenience

- Remote Control
- Night mode: No

Compatibility

- Smartphone/tablet APP control

Power

- Subwoofer Power supply: 220–240 V AC, 50/60 Hz
- Main unit power supply: 100-240 V AC, 50/60 Hz
- Subwoofer standby power: < 0.5 W
- Main unit standby power: < 0.5 W
- Auto standby

Packaging dimensions

- Height: 45.8 cm
- Packaging type: Box
- Width: 115 cm
- Depth: 40.5 cm
- Number of products included: 1
- EAN: 48 95229 11261 2
- Gross weight: 18.8 kg
- Net weight: 13.87 kg
- Tare weight: 4.93 kg

Accessories

- Included accessories: Remote Control (with battery), Power cord, Quick start guide, World Wide Warranty leaflet

B95/10

Design

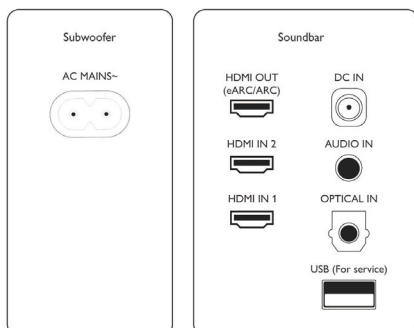
- Colour: Black
- Wall mountable

Dimensions

- Main Unit (W x H x D): 1049 x 55.6 x 120 mm
- Main Unit Weight: 4.07 kg
- Subwoofer (W x H x D): 230 x 400 x 407 mm
- Subwoofer Weight: 9.6 kg

Video

- 3D pass-through
- Video Enhancement: 4K Video Pass-through, Dolby Vision, HDR10, HDR10+, HLG



Issue date 2024-04-29

Version: 19.2.3

EAN: 48 95229 11261 2

© 2024 Koninklijke Philips N.V.
All Rights reserved.

Specifications are subject to change without notice.
Trademarks are the property of Koninklijke Philips N.V.
or their respective owners.

www.philips.com

