

Always there to help you

Register your product and get support at [www.philips.com/support](http://www.philips.com/support)

Question?  
Contact  
Philips

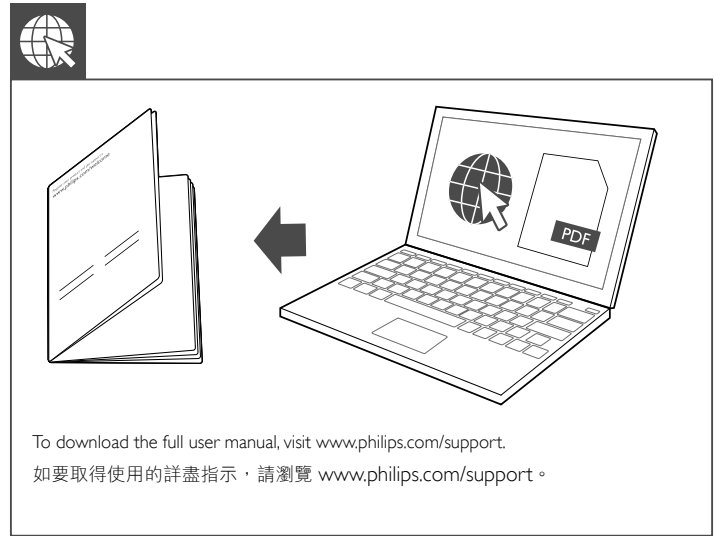
BTD7170



EN Short User Manual

ZH-TW 精簡用戶手冊

PHILIPS

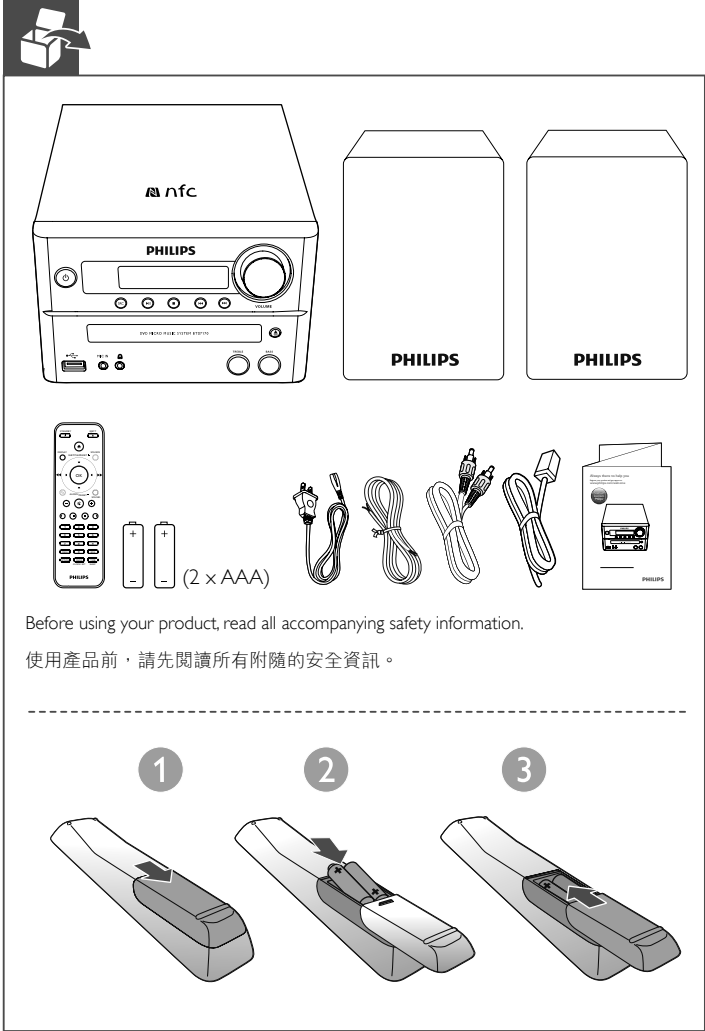


To download the full user manual, visit [www.philips.com/support](http://www.philips.com/support).  
如要取得使用的詳盡指示，請瀏覽 [www.philips.com/support](http://www.philips.com/support)。

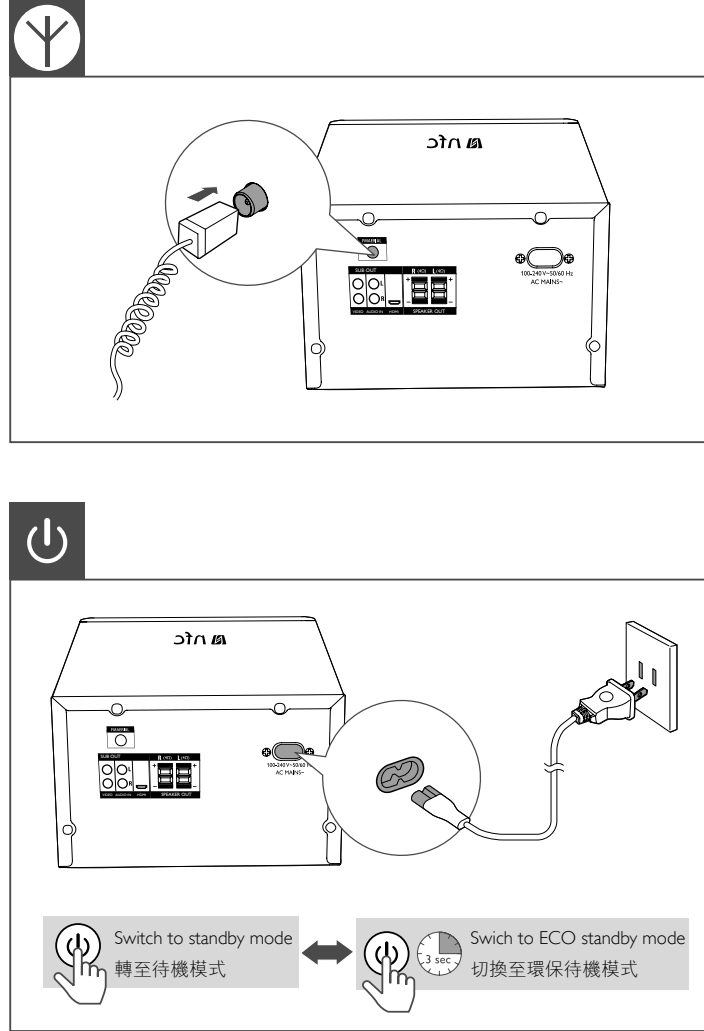
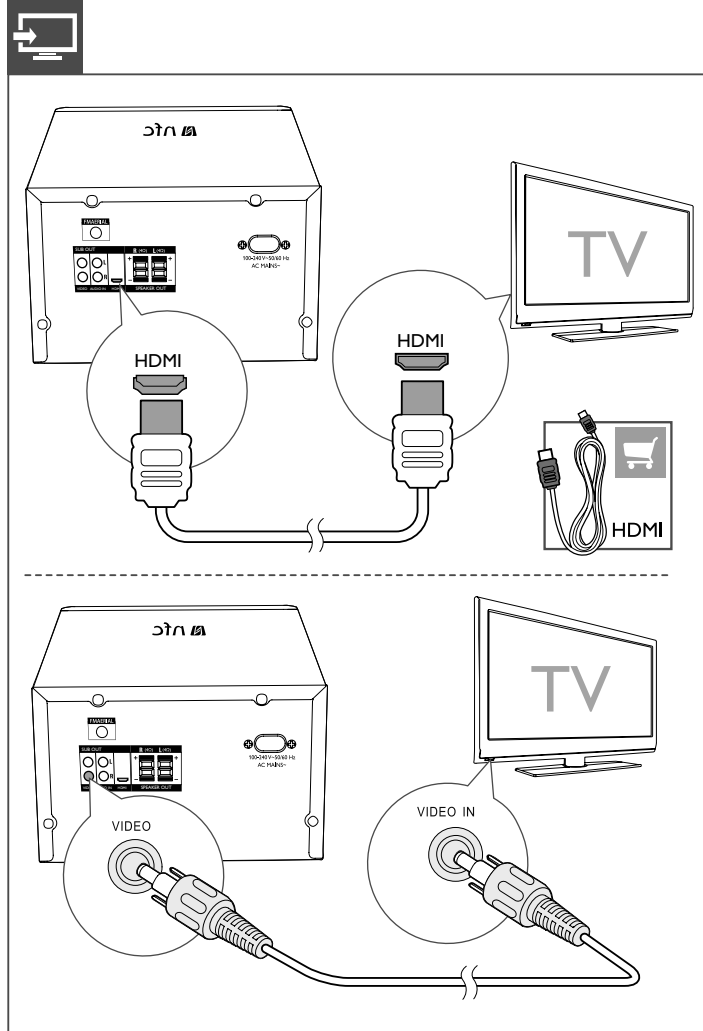
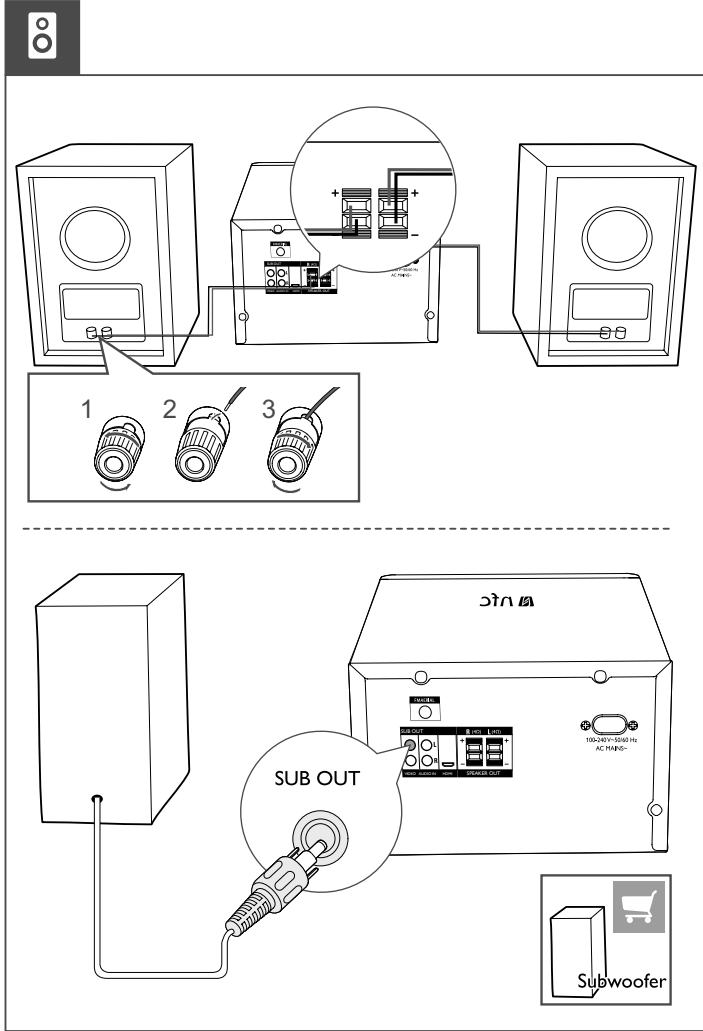
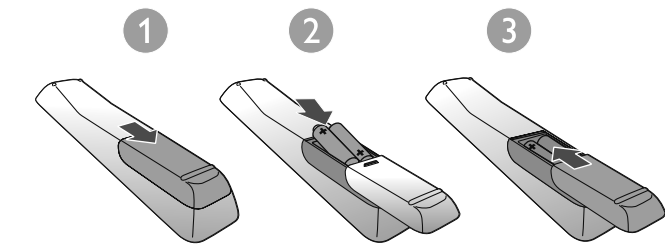


Specifications are subject to change without notice.  
2014 © WOOX Innovations Limited. All rights reserved.  
Philips and the Philips' Shield Emblem are registered trademarks of Koninklijke Philips N.V. and are used by WOOX Innovations Limited under license from Koninklijke Philips N.V.

BTD7170\_98\_Short User Manual\_V3.0



Before using your product, read all accompanying safety information.  
使用產品前，請先閱讀所有附隨的安全資訊。

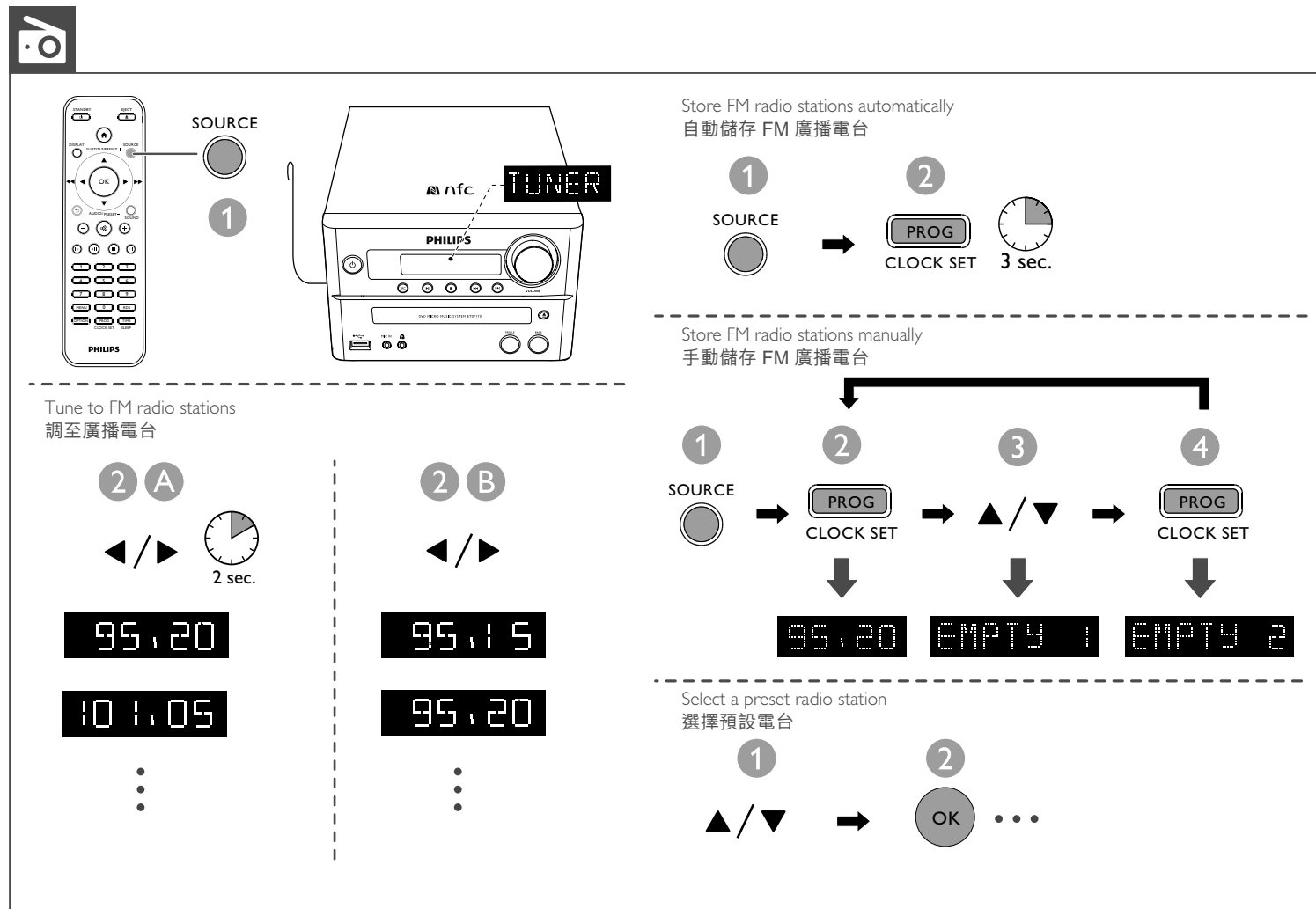
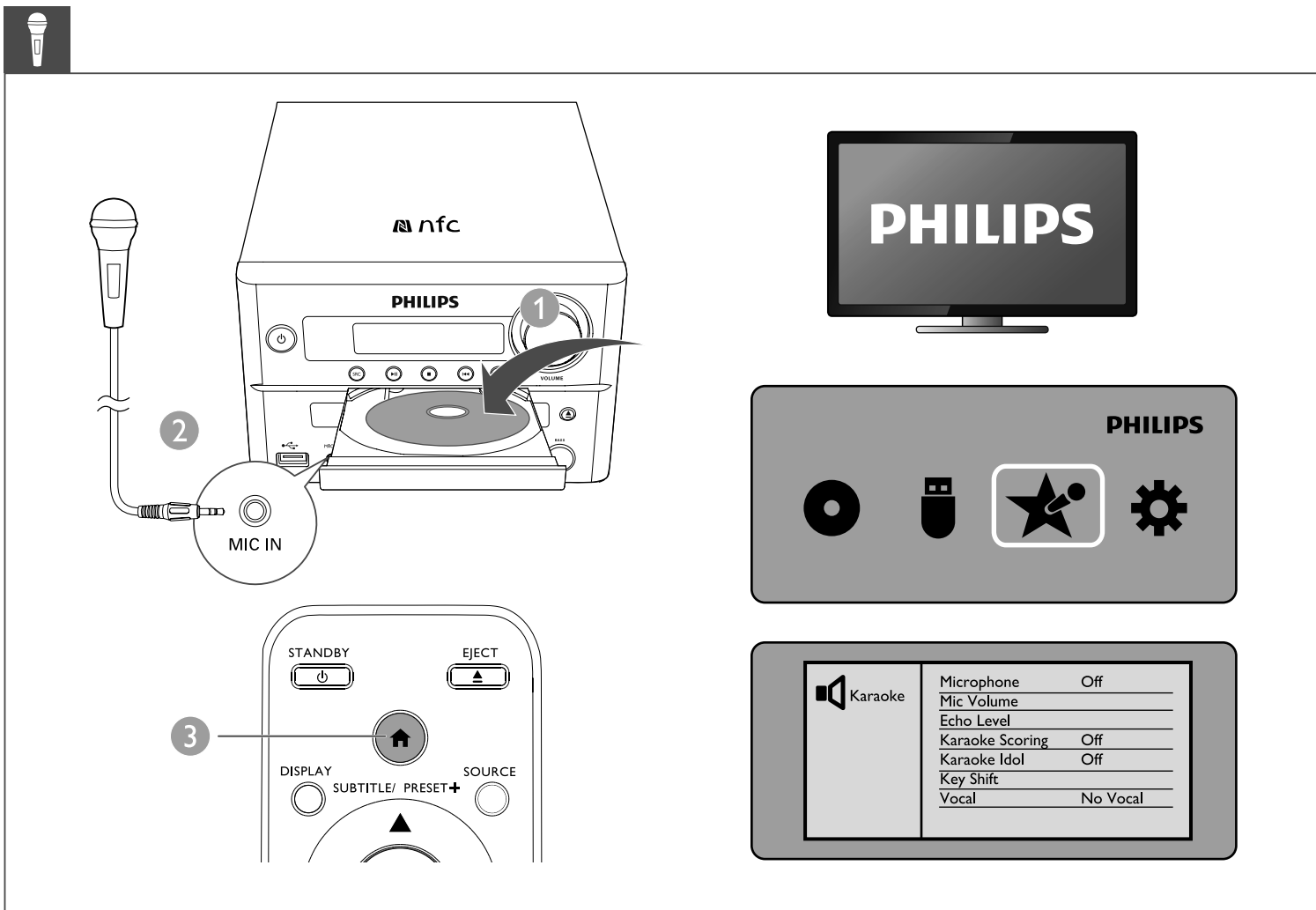
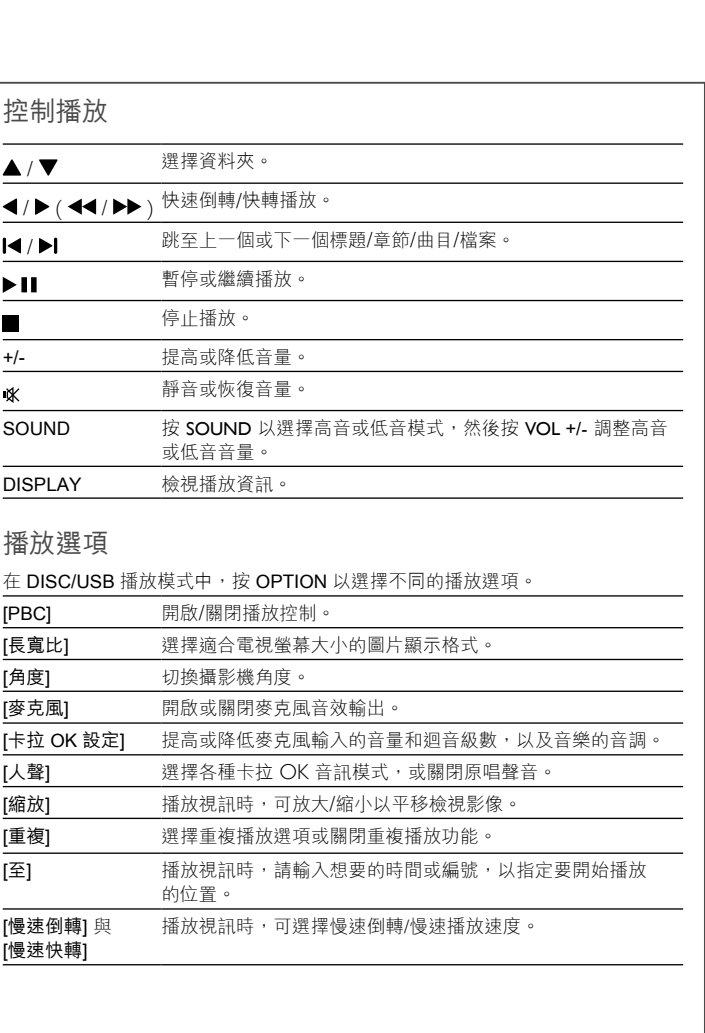
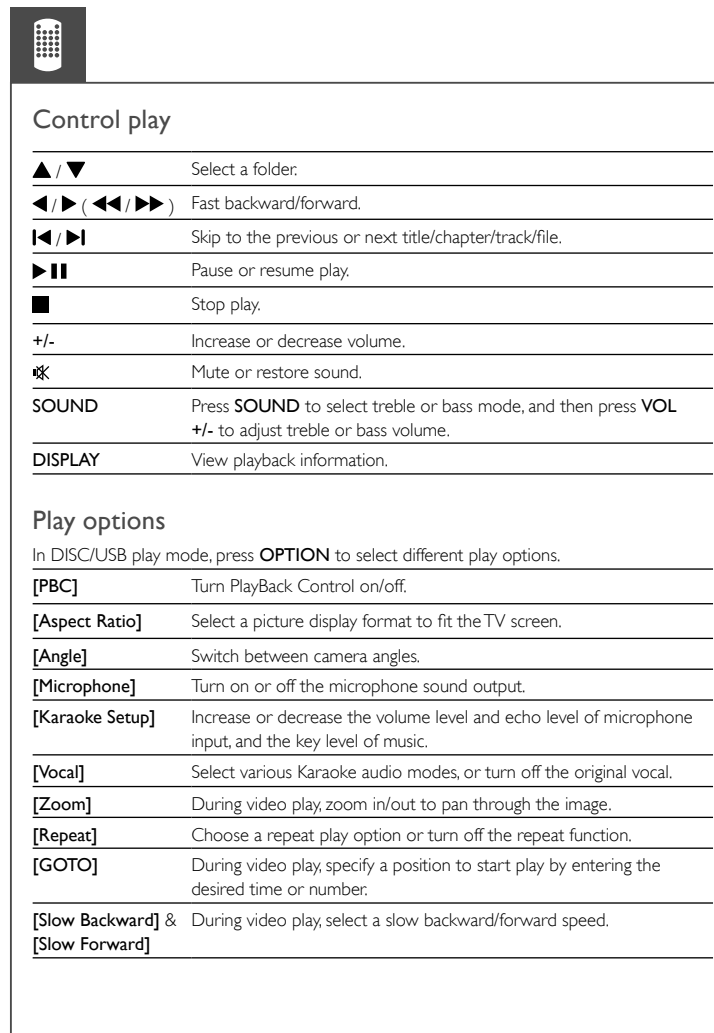
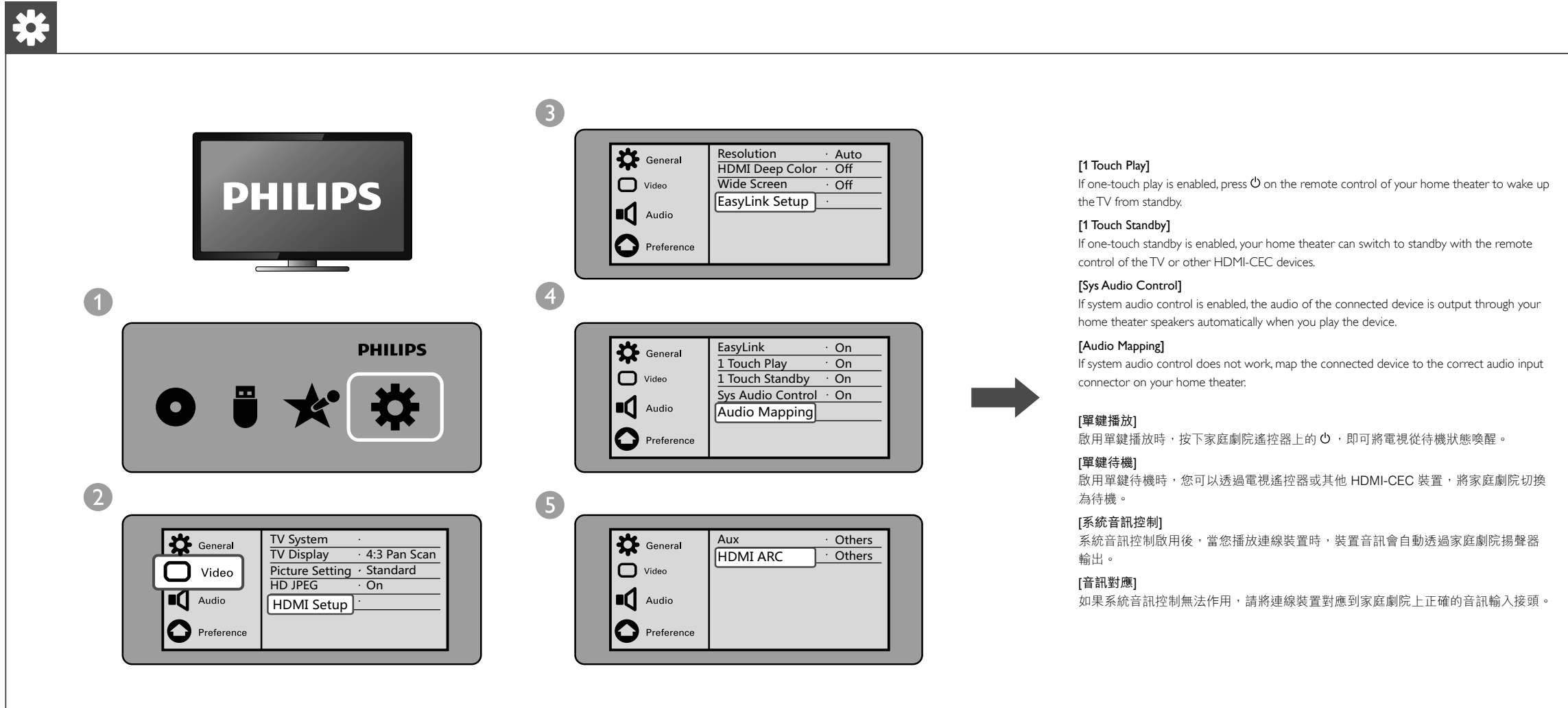
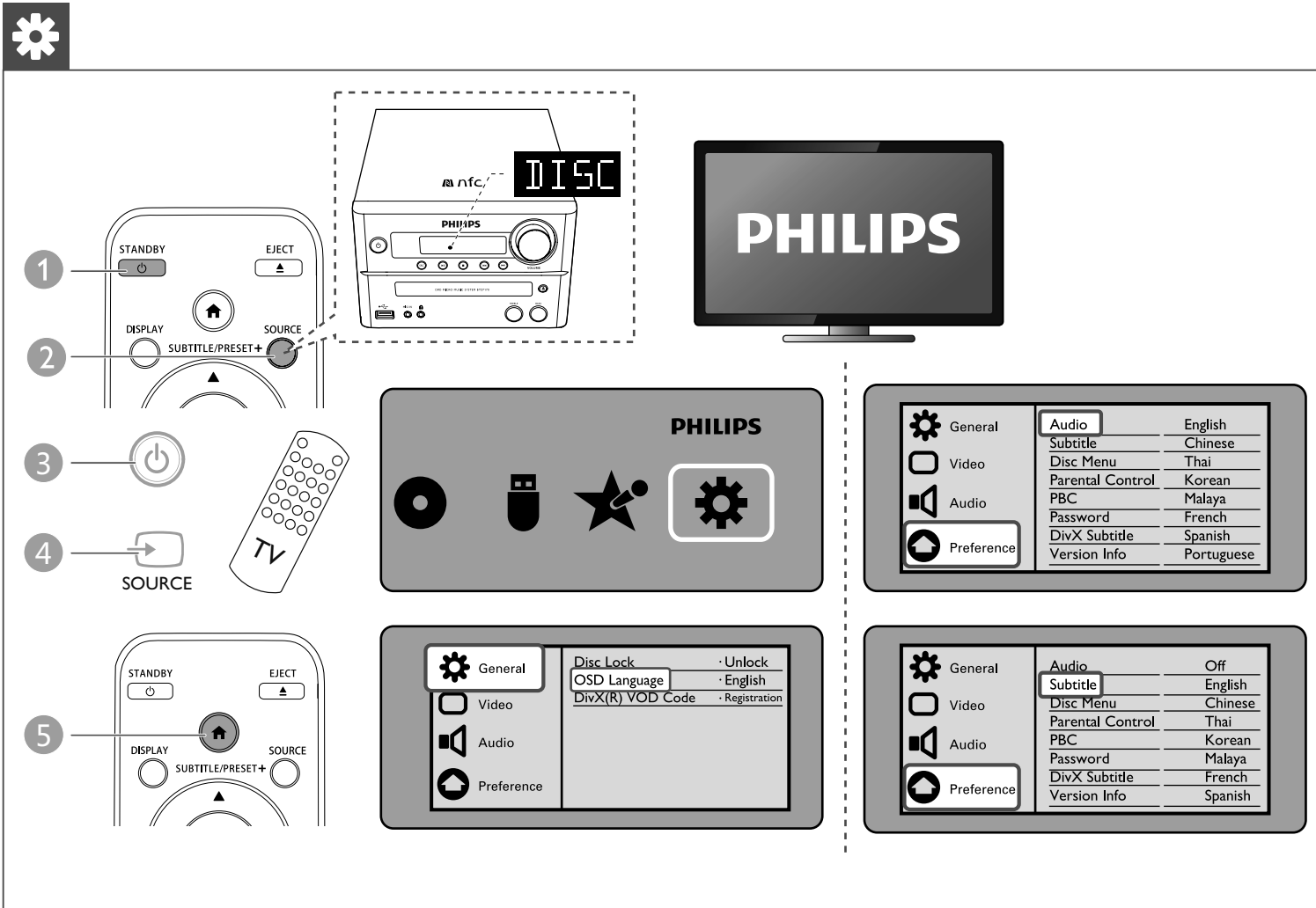


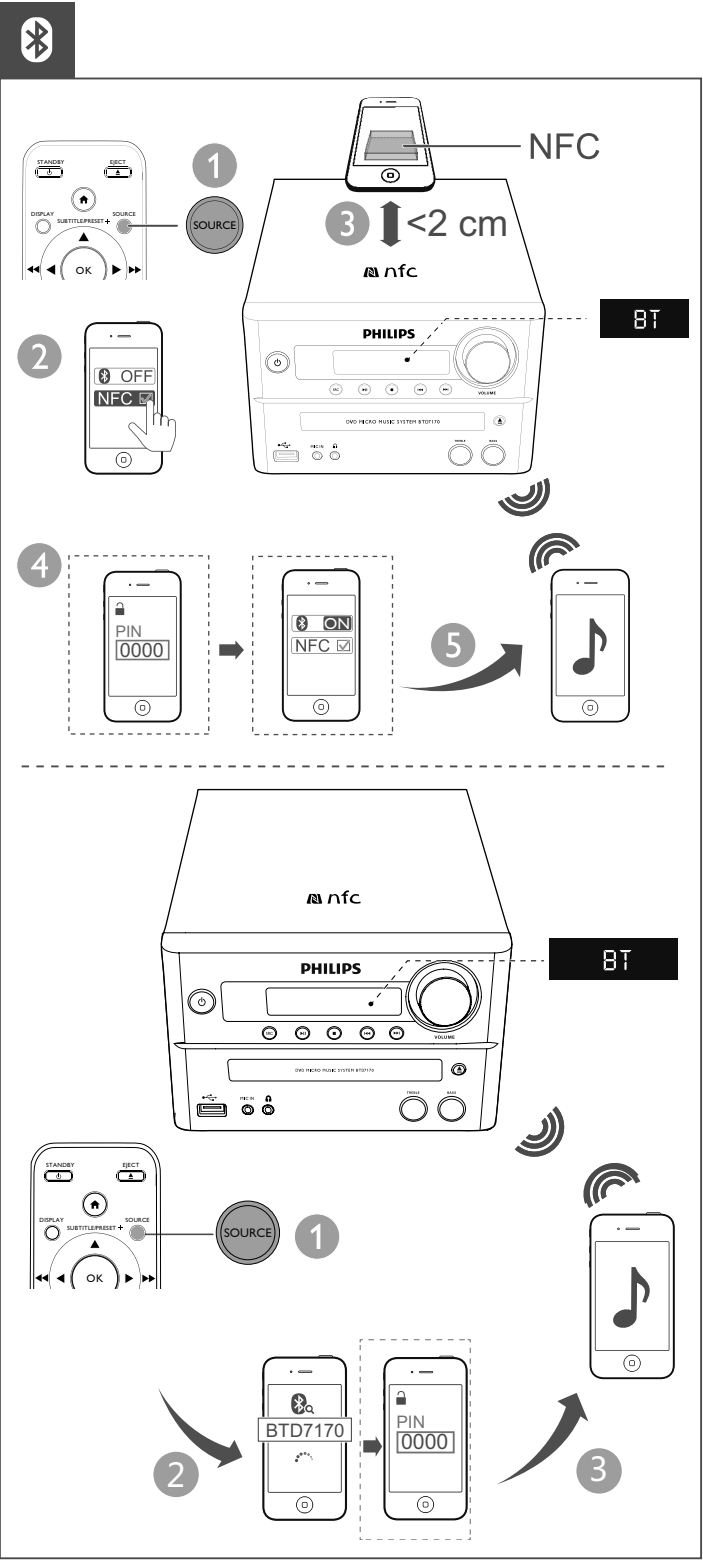
You can play DVD discs marked with the following region code:

DVD region code	Countries
2	Asia Pacific

您可以播放標有下列區碼的DVD光碟：

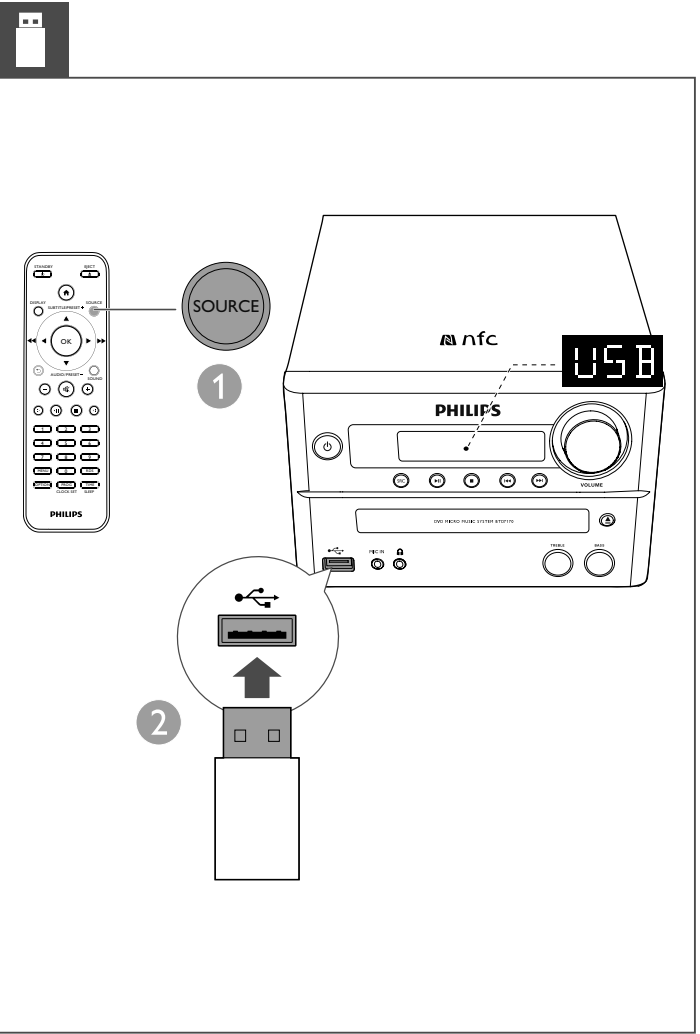
DVD 區碼	國家/地區
2	亞太地區





Specifications	
Maximum Output Power	150 W
Speaker Impedance	4 ohm
Speaker Driver	5.25" woofer + 25 mm tweeter
Sensitivity	>84 dB/mW
Disc Diameter	12 cm/8 cm
USB Direct Version	2.0 full speed
USB Charging	1 A
Bluetooth version	V2.1 + EDR/support APT-X
Frequency band	2.4 GHz ~ 2.48 GHz ISM Band
Range	10 m (free space)
Tuning Range	87.5-108 MHz
Tuning grid	50 KHz
AC power	100-240V~, 50/60 Hz
Connector type	RCA connector
Subwoofer recommendation	
RMS power	100W@10%THD
Frequency response	30 Hz~200Hz
Input impedance	>22K
Alimentation par secteur	100-240V~, 50/60 Hz
Operation Power Consumption	50W
Eco Standby Power Consumption	<0.5 W
Dimensions	
- Main Unit (W x H x D)	230 x 145 x 240 mm
- Speaker Box (W x H x D)	173 x 261 x 241 mm
Weight	
- Main Unit	2.9 kg
- Speaker Box	2 x 3.1 kg

規格	
最大輸出功率	150 W
揚聲器阻抗	4 歐姆
揚聲器驅動器	5.25 吋低音揚聲器 + 25 公釐高音揚聲器
靈敏度	>84 dB/mW
光碟直徑	12 公分 / 8 公分
USB Direct 版本	2.0 全速
USB 充電	1 A
藍牙版本	V2.1 + EDR/支援 APT-X
頻率波段	2.4 GHz ~ 2.48 GHz ISM 波段
範圍	10 公尺 (自由空間)
調諧範圍	87.5-108 MHz
接頭類型	RCA 接頭
低低音揚聲器建議	
RMS 功率	100W@10%THD
頻率響應	30 Hz~200Hz
輸入阻抗	> 22K
AC 電源	100-240V~，50/60 Hz
變更調諧	50 KHz
AC 電源	100-240V~，50/60 Hz
操作耗電量	50 W
節能耗電量	<0.5 W
尺寸	
- 主裝置 (寬 x 高 x 深)	230 x 145 x 240 公釐
- 揚聲器音箱 (寬 x 高 x 深)	173 x 261 x 241 公釐
重量	
- 主裝置	2.9 公斤
- 揚聲器音箱	2 x 3.1 公斤



Supported MP3-CD formats	
• Digital Video Discs (DVDs)	
• Video CDs (VCDs)	
• Super Video CDs (SVCDs)	
• Digital Video Discs + Rewritable (DVD+RW)	
• Compact Discs (CDs)	
• Picture (Kodak) JPEG files on CDR(W)	
• DivX(R) disc on CD-R(W):	
• DivX 3.11, 4.x and 5.x	

Supported MP3-CD formats	
• ISO 9660	
• Max. title/album name: 12 characters	
• Max. title number plus album: 255	
• Max. nested directory: 8 levels	
• Max. album number: 32	
• Max. MP3 track number: 999	
• Supported sampling frequencies for MP3 disc: 32 kHz, 44.1 kHz, 48 kHz	
• Supported Bit-rates of MP3 disc are: 32, 64, 96, 128, 192, 256 (kbps)	

Compatible USB devices	
• USB flash memory (USB2.0 or USB1.1)	
• USB flash players (USB2.0 or USB1.1)	
• memory cards (Requires an additional card reader to work with this unit)	

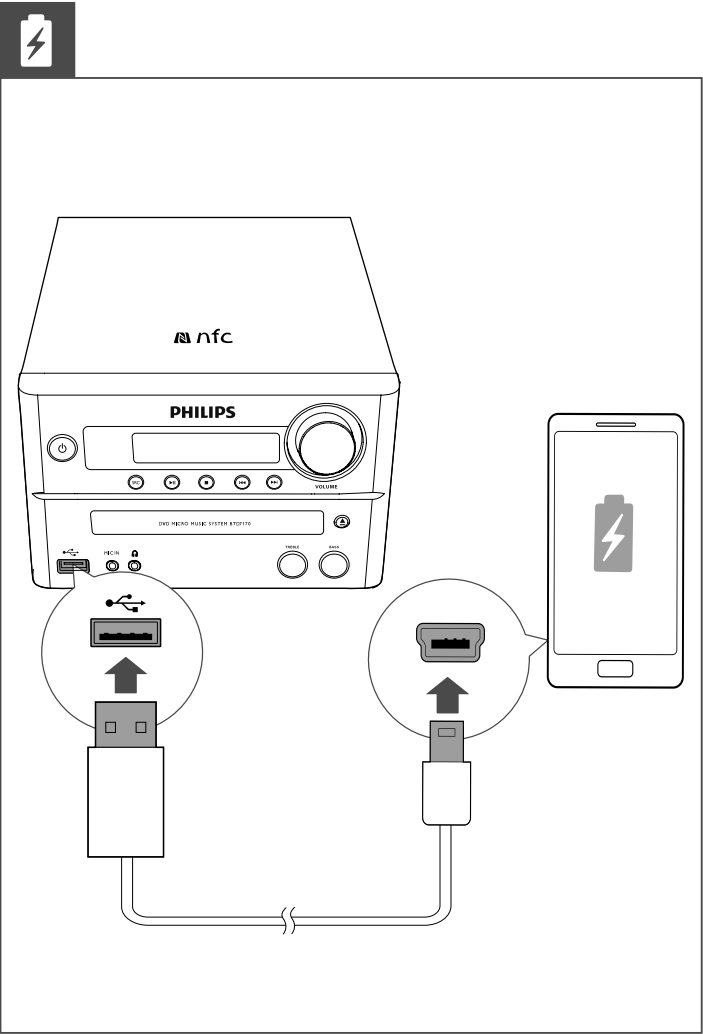
Supported USB formats	
• USB or memory file format: FAT12, FAT16, FAT32 (sector size: 512 bytes)	
• MP3 bit rate (data rate): 32-320 Kbps and variable bit rate	
• Directory nesting up to a maximum of 8 levels	
• Number of albums/ folders: maximum 99	
• Number of tracks/titles: maximum 999	
• ID3 tag v2.0 or later	
• File name in Unicode UTF8 (maximum length: 32 bytes)	

支援的光碟格式	
• 數位視訊光碟 (Digital Video Disc：DVD)	
• 視訊光碟 (Video CD：VCD)	
• Super VCD (SVCD)	
• 數位影片光碟 + 可覆寫 (DVD+RW)	
• 光碟 (CD)	
• CDR(W) 上的影像檔 (Kodak - JPEG)	
• CD-R(W) 上的 DivX(R) 檔：	
• DivX 3.11、4.x 和 5.x	

支援的 MP3-CD 光碟格式	
• ISO 9660	
• 最大 標題/專輯名稱：12 個字元	
• 最大 標題數 (加專輯)：255。	
• 最大 巢狀目錄層次：8 層。	
• 最大 專輯數：32。	
• 最大 MP3 曲目數：999。	
• 支援的 MP3 光碟取樣頻率：32 kHz、44.1 kHz、48 kHz。	
• 支援的 MP3 光碟位元傳輸速率：32、64、96、128、192、256 (kbps)。	

相容的 USB 裝置	
• USB 快閃記憶體 (USB 2.0 或 USB 1.1)	
• USB 快閃播放機 (USB 2.0 或 USB 1.1)	
• 記憶卡 (需要額外的讀卡機搭配產品使用)	

支援的 USB 格式	
• USB 或記憶體檔案格式：FAT12、FAT16、FAT32 (區段大小：512 位元組)	
• MP3 位元速率 (資料速率)：32-320 Kbps 及變動位元速率	
• 最多 8 層的巢狀結構：	
• 專輯/資料夾數目：上限 99	
• 曲目/標題數目：上限 999	
• ID3 標籤 v2.0 或更新版本	
• Unicode UTF8 格式的檔名 (長度上限：32 位元組)	



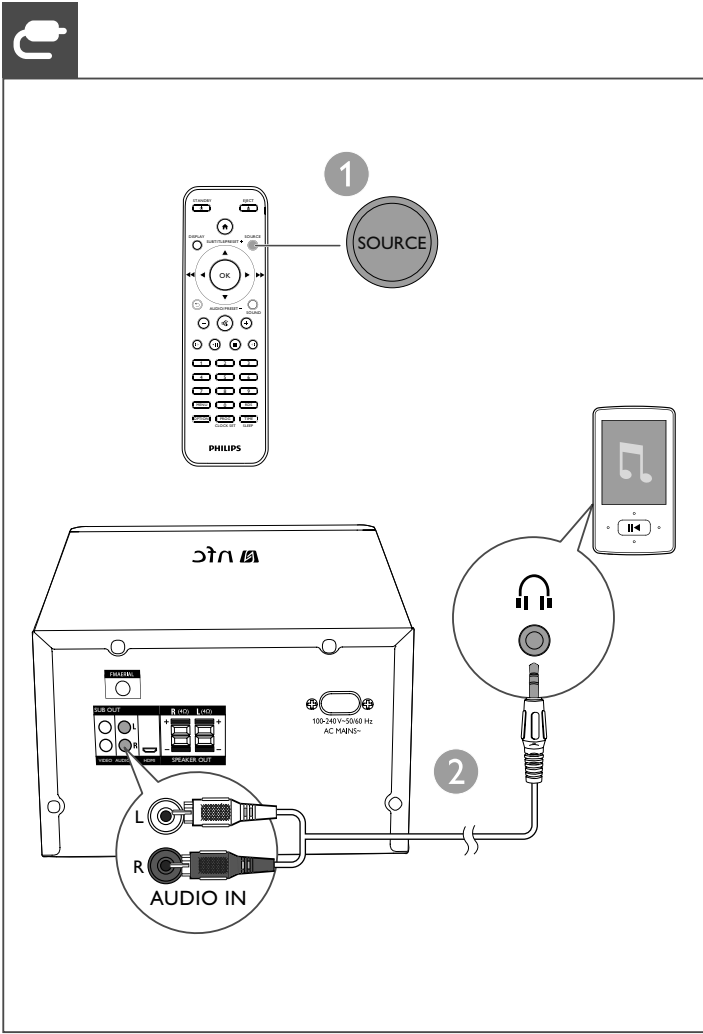
EN	
1 Important	
Safety	
This 'bolt of lightning' indicates uninsulated material within the device may cause an electrical shock. For the safety of everyone in your household, please do not remove the covering. The 'exclamation mark' calls attention to features for which you should read the enclosed literature closely to prevent operating and maintenance problems. WARNING: To reduce the risk of fire or electric shock the device should not be exposed to rain or moisture and objects filled with liquids, such as vases, should not be placed on the device. CAUTION: To prevent electric shock, fully insert the plug. (For regions with polarized plugs: To prevent electric shock, match wide blade to wide slot.)	

Important Safety Instructions	
• Follow all instructions.	
• Heed all warnings.	
• Do not use this device near water.	
• Clean only with dry cloth.	
• Do not block any ventilation openings. Install in accordance with the manufacturer's instructions.	
• Do not install near any heat sources such as radiators, heat registers, stoves, or other devices (including amplifiers) that produce heat.	
• Protect the power cord from being walked on or pinched, particularly at plugs, convenience receptacles, and the point where they exit from the device.	
• Only use attachments/accessories specified by the manufacturer.	
• Use only with the cart, stand, tripod, bracket, or table specified by the manufacturer or sold with the device. When a cart is used, use caution when moving the cart/device combination to avoid injury from tip-over.	
• Unplug this device during lightning storms or when unused for long periods of time.	
• Refer all servicing to qualified service personnel. Servicing is required when the device has been damaged in any way, such as power-supply cord or plug is damaged, liquid has been spilled or objects have fallen into the device, the device has been exposed to rain or moisture, does not operate normally, or has been dropped.	
• Battery usage CAUTION - To prevent battery leakage which may result in bodily injury, property damage, or damage to the unit:	
• Install all batteries correctly, + and - as marked on the unit.	
• Do not mix batteries (old and new or carbon and alkaline, etc.).	
• Batteries (packed or installed) shall not be exposed to excessive heat such as sunshine, fire or the like.	
• Remove batteries when the unit is not used for a long time.	
• The device shall not be exposed to dripping or splashing.	
• Do not place any sources of danger on the device (e.g. liquid filled objects, lighted candles).	
• Where the MAINS plug or an appliance coupler is used as the disconnect device, the disconnect device shall remain readily operable.	

Warning	
• Never remove the casing of this device.	
• Never lubricate any part of this device.	
• Never place this device on other electrical equipment.	
• Keep this device away from direct sunlight, naked flames or heat.	
• Never look into the laser beam inside this device.	
• Ensure that you always have easy access to the power cord, plug, or adaptor to disconnect this device from the power.	

Hearing safety	
<b>Caution</b>	
• To prevent possible hearing damage, do not listen at high volume levels for long periods.	

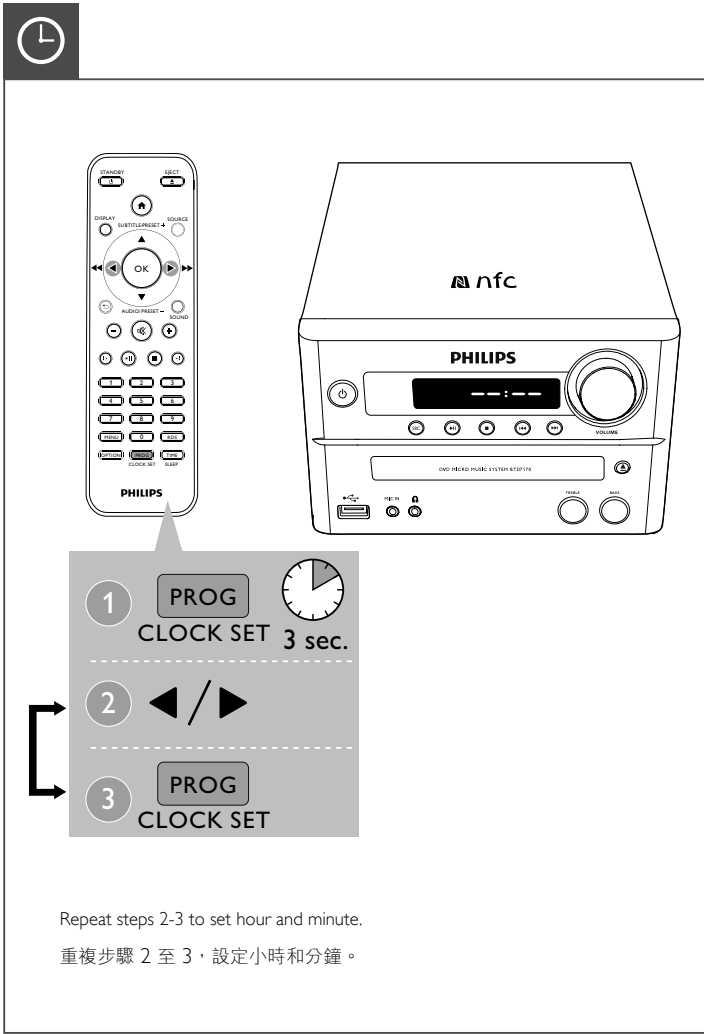
Listen at a moderate volume:	
• Using headphones at a high volume can impair your hearing. This product can produce sounds in decibel ranges that may cause hearing loss for a normal person, even for exposure less than a minute. The higher decibel ranges are offered for those that may have already experienced some hearing loss.	



Sound can be deceiving. Over time your hearing 'comfort level' adapts to higher volumes of sound. So after prolonged listening, what sounds 'normal' can actually be loud and harmful to your hearing. To guard against this, set your volume to a safe level before your hearing adapts and leave it there.	
To establish a safe volume level:	
• Set your volume control at a low setting.	
• Slowly increase the sound until you can hear it comfortably and clearly, without distortion.	
Listen for reasonable periods of time:	
• Prolonged exposure to sound, even at normally 'safe' levels, can also cause hearing loss.	
• Be sure to use your equipment reasonably and take appropriate breaks.	
Be sure to observe the following guidelines when using your headphones.	
• Listen at reasonable volumes for reasonable periods of time.	
• Be careful not to adjust the volume as your hearing adapts.	
• Do not turn up the volume so high that you can't hear what's around you.	
• You should use caution or temporarily discontinue use in potentially hazardous situations.	
• Do not use headphones while operating a motorized vehicle, cycling, skateboarding, etc.: it may create a traffic hazard and is illegal in many areas.	

Notice	
Any changes or modifications made to this device that are not expressly approved by WOOX Innovations may void the user's authority to operate the equipment. Your product is designed and manufactured with high quality materials and components, which can be recycled and reused. Never dispose of your product with other household waste. Please inform yourself about the local rules on the separate collection of electrical and electronic products and batteries. The correct disposal of these products helps prevent potentially negative consequences on the environment and human health. Your product contains batteries, which cannot be disposed of with normal household waste. Please inform yourself about the local rules on separate collection of batteries. The correct disposal of batteries helps prevent potentially negative consequences on the environment and human health. Please visit <a href="http://www.recycle.philips.com">www.recycle.philips.com</a> for additional information on a recycling center in your area.	
Environmental information	
All unnecessary packaging has been omitted. We have tried to make the packaging easy to separate into three materials: cardboard (box), polystyrene foam (buffer) and polyethylene (bags, protective foam sheet). Your system consists of materials which can be recycled and reused if disassembled by a specialized company. Please observe the local regulations regarding the disposal of packaging materials, exhausted batteries and old equipment.	
This item incorporates copy protection technology that is protected by U.S. patents and other intellectual property rights of Rovi Corporation. Reverse engineering and disassembly are prohibited.	
The Bluetooth® word mark and logos are registered trademarks owned by Bluetooth SIG, Inc. and any use of such marks by WOOX Innovations is under license.	
The N Mark is a trademark or registered trademark of NFC Forum, Inc. in the United States and in other countries.	
HDMI and HDMI logos and High-Definition Multimedia Interface are trademarks or registered trademarks of HDMI licensing LLC in the United States and other countries.	
'DVD Video' is a trademark of DVD Format/Logo Licensing Corporation. ABOUT DivX VIDEO: DivX® is a digital video format created by DivX, LLC, a subsidiary of Rovi Corporation. This is an official DivX Certified® device that plays DivX video. Visit <a href="http://divx.com">divx.com</a> for more information and software tools to convert your files into DivX videos. ABOUT DivX VIDEO-ON-DEMAND: This DivX Certified® device must be registered in order to play purchased DivX Video-on-Demand (VOD) movies. To obtain your registration code, locate the DivX VOD section in your device setup menu. Go to <a href="http://vod.divx.com">vod.divx.com</a> for more information on how to complete your registration. DivX®, DivX Certified® and associated logos are trademarks of Rovi Corporation or its subsidiaries and are used under license.	
Manufactured under license from Dolby Laboratories. 'Dolby' and the double-D symbol are trademarks of Dolby Laboratories. This apparatus includes this label:	

• The type plate is located on the back of the device.	



ZH-TW	
1 重要事項	
安全性	
了解這些安全符號	

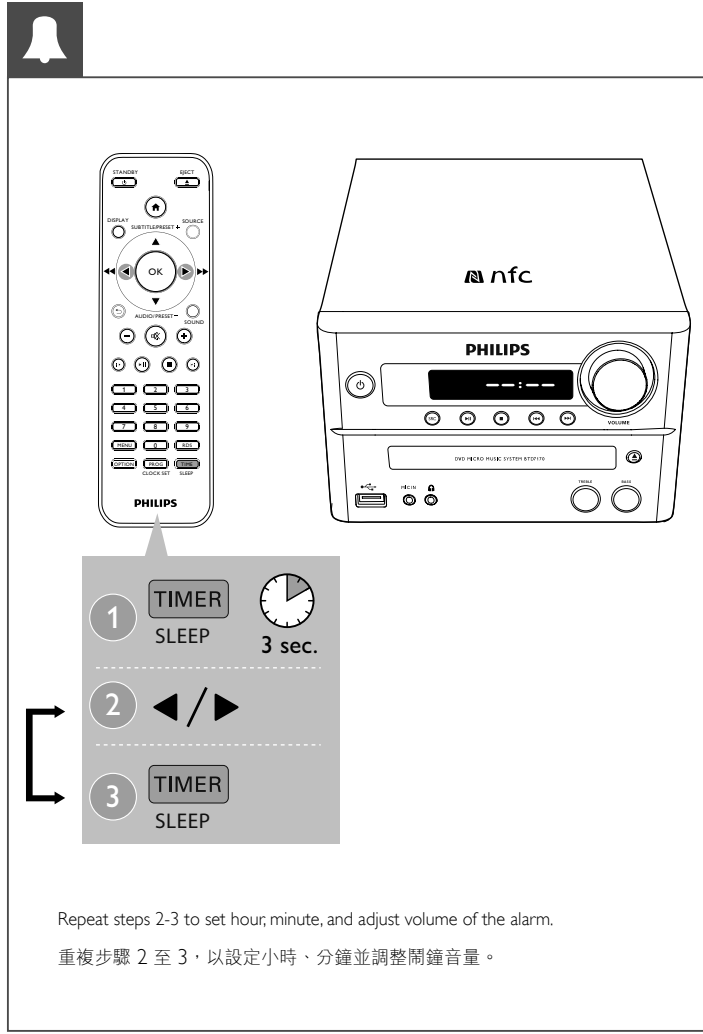
此「閃電」表示裝置內部的非絕緣材質可能導致電擊。為保障家中所有人員的安全，請勿拆卸外殼。對於以「驚嘆號」提醒您注意的功能，應仔細閱讀隨附的說明文字，避免發生操作及維修問題。警告：為降低火災與觸電的危險，您應避免讓本裝置暴露於雨水或濕氣中，並且請勿在本裝置上放置花瓶等裝有液體之物品。注意：若要防止觸電，請完全地插入插頭。(使用具體指示之插頭的地區：若要防止觸電，請將較寬的接腳插入較寬的插孔。)	
---	--

重要安全性指示	
• 遵循所有指示。	
• 注意所有警告文字。	
• 請勿在近水處使用本裝置。	
• 清潔時僅能使用乾布。	
• 請勿阻塞任何通風口。請依製造商的指示進行安裝。	
• 請勿將本裝置安裝在接近熱源處，例如暖器裝置、暖氣孔、火爐或其他會產生高溫的裝置 (包括擴大機在內)。	
• 妥善保護電源線，避免踩踏或夾壓，尤其是插頭、便利插座，以及電源線與裝置的連接處。	
• 僅使用原廠指定的附件/配件。	
• 僅使用經原廠指定或隨裝置銷售的推車、底座、三腳架、支架或桌子。使用推車移動裝置時應謹慎小心，避免因翻覆而造成傷害。	
• 如遇雷雨或長時間不使用時，請將裝置的插頭拔除。	
• 所有維修服務應委託合格的服務人員處理。當本裝置因故障時 (例如電源線或插頭損壞、液體潑灑、物品掉入裝置內、裝置淋到雨或受潮、無法正常操作或排障等)，都必須進行維修。	
• 電池使用注意事項 – 為防止電池滲漏導致人身傷害、財物受損或產品損壞：	
• 請勿混用電池 (新舊混用或鹼性電池混用等)。	
• 請勿讓電池 (套組或安裝在內) 暴露在高溫環境下，例如日照或火灼等。	
• 若產品長時間不使用時，請將電池取出。	
• 請勿將裝置置於潮濕或過熱的環境。	
• 請勿在裝置上放置危險物品 (如盛裝液體的容器、點燃的蠟燭等)。	
• 當電源插頭或產品連接器作為中斷連接裝置時，中斷連接裝置應保持隨時可操作。	

警告	
• 請勿打開裝置外殼。	
• 請勿在此裝置的任何部位使用潤滑油。	
• 請勿將此裝置放置在其他電器上。	
• 請勿讓此裝置直接曝曬於陽光下，或靠近未隔絕的火線或熱源。	
• 請勿直視此裝置內的雷射光。	
• 請確保電源線、插頭或變壓器位於容易取得的地方，以便其中斷裝置電源。	

聽力安全	
<b>注意</b>	
• 為避免造成可能的聽力受損，請勿長時間以高音量聆聽。	

收聽音量需適中：	
• 耳機音量過高可能損傷聽力。本產品產生的音量大且可能達到損害一般人聽力的範圍，即使持續不到一分鐘也可能造成傷害。較高分貝數範圍是提供給聽力可能已受損的人。	
• 音質不容易處理。聽了一段時間，聽覺「舒適度」會逐漸習慣更高的音量，因此長時間聆聽之後，「正常」的音實際上已經很大聲，並可能有損聽力。請在聽覺適應之前將音量調至安全量，並維持不變，以免聽力受損。	
調整安全音量：	
• 先將音量調低。	
• 慢慢提高音量，直到聽起來舒服且清晰而無失真為止。	



適時休息：	
• 長時間聆聽的情況下，即使是正常「安全」的音量，也可能會損害聽力。	
• 請務必適度使用裝置，並適時休息。	
使用耳機時務必遵守以下準則。	
• 音量適中，適時休息。	
• 注意勿因聽覺適應而不斷調高音量。	
• 勿將音量調高至聽不到廣播聲音的程度。	
• 在有潛在危險的環境應提高警覺或暫不使用本產品。	
• 駕駛車輛、騎腳踏車、玩滑板或進行相關活動時，請勿使用耳機，否則可能釀成交通意外，而且有些地區也已立法禁止。	

2 注意	
未經 WOOX Innovations 明示許可即變更或修改本裝置，可能導致使用者操作本設備的授權失效。您的產品是使用優質材料和元件所設計及製造，均可回收和重複使用。請勿將您的產品與其他家用廢棄物一併丟棄。請瞭解當地電子及電器產品與電池的分類回收相關法規。正確處理廢棄產品有助於避免對環境和人類健康帶來負面影響。此產品內含電池，不可視為生活垃圾處理。請了解當地有關電池的垃圾分類相關法規。正確處理廢棄電池有助於避免對環境和人類健康帶來負面影響。請瀏覽 <a href="http://www.recycle.philips.com">www.recycle.philips.com</a> 以瞭解有關當地回收機構的詳細資訊。	

環境保護資訊	
所有非必要之包裝材料均已捨棄。我們嘗試讓包裝可以輕易拆分成三種材質：厚紙板(外盒)、聚苯乙烯泡棉(防震)以及聚乙烯(包裝袋、保護性泡棉膠紙)。產品本身含有可回收並重複使用的材質，但是需由專業公司拆解。請根據各地法規丟棄包裝材料、廢電池和舊機器。	
Be responsible. Respect copyrights.	
Bluetooth	
nfc	
HDMI	
DVD VIDEO	
DIVX	
HDMI、HDMI 標誌以及 High-Definition Multimedia Interface (HDMI，高畫質媒體介面) 為 HDMI 授權 LLC 在美國及其他國家的商標或註冊商標。	
「DVD Video」為 DVD Format/Logo Licensing Corporation 的商標。	
關於 DivX VIDEO：DivX® 是 DivX, LLC 創立的數位視訊格式。DivX, LLC 本身為 Rovi Corporation 的子公司。此為正式的 DivX Certified® 裝置，能播放 DivX 視訊。請造訪 <a href="http://divx.com">divx.com</a> 瞭解更多資訊，並下載軟體工具將檔案轉換為 DivX 視訊。	
關於 DivX VIDEO-ON-DEMAND：DivX Certified® 裝置必須先註冊，才能播放所購買的 DivX Video-on-Demand (VOD) 電影。要取得註冊碼，請在您的裝置設定選單中，找出 DivX VOD 的部分。請造訪 <a href="http://vod.divx.com">vod.divx.com</a> 瞭解更多有關如何完成註冊等資訊。	
DivX®, DivX Certified® 以及相關標誌為 Rovi Corporation 或其分公司的商標，經授權後使用。	
依據 Dolby Laboratories 之授權製造。「Dolby」與雙 D 符號為 Dolby Laboratories 之商標。	
本產品包含此標識：	

低功率電波輻射性電機管理辦法	
第十二條 經型式認證合格之低功率射頻電機，非經許可，公司、商號或使用者均不得擅自變更頻率、加大功率或變更原設計之特性及功能。	
第十四條 低功率射頻電機之使用不得影響飛航安全及干擾合法通信；經發現有干擾現象時，應立即停用，並改善至無干擾時方得繼續使用。	
備註	
• 機型牌位於產品背面。	

