

PHILIPS**Fidelio****E6**Wireless satellite speakers
and subwoofer

ZH-CN 用户手册

EN User manual

始终如一地为您提供帮助

在以下网站上注册产品并获得支持
www.philips.com/support

有疑问？
请联系飞利浦

目录

1 重要信息	2	6 更新软件	18
安全	2	检查软件版本	18
爱护产品	2	通过 USB 设备更新软件	18
爱护环境	3		
帮助和支持	3	7 产品规格	19
开放源代码软件	3		
		8 故障种类和处理方法	20
2 您的产品	4		
主装置	4		
遥控器	4		
无线环绕音箱	5		
无线重低音音箱	6		
接口	6		
3 连接	7		
连接主装置	7		
为环绕音箱充电	7		
与主装置手动配对连接	8		
摆放音箱	8		
连接电视的音频	9		
连接其他设备的音频	10		
通过 HDMI 连接数字设备	11		
4 空灵校准	12		
步骤 1: 校准聆听区	12		
步骤 2: 校准无线环绕音箱位置	13		
5 使用您的产品	13		
调节音量	13		
选择声音	13		
MP3 播放器	14		
USB 存储设备	15		
通过蓝牙播放音频	15		
通过 NFC 连接蓝牙	17		
自动待机	17		
设置显示屏亮度	17		
应用出厂设置	17		

1 重要信息

请在使用本产品之前阅读并理解所有说明。因未遵守说明而造成的损坏不在保修范围内。

安全

小心触电或发生火灾！

- 在建立或更改任何连接之前，请确保所有设备均已与电源插座断开连接。
- 切勿让本产品及配件与雨或水接触。切勿将液体容器（如花瓶）置于产品旁边。如果有液体溅到本产品表面或内部，请立即断开其电源。请与客户服务联系，对产品进行检查后再使用。
- 切勿将本产品及配件放置在靠近明火或其他热源的地方，包括阳光直射处。
- 切勿将物体插入本产品的通风槽或其他开口。
- 将电源插头或设备耦合器用作断电设备时，该断电设备应可以随时使用。
- 不可将电池（电池组或安装的电池）置于高温环境，如阳光直射处、明火或类似环境。
- 在雷电天气之前，应断开本产品的电源。
- 断开电源线时，应始终握住插头，而不能拉电缆。

小心短路或起火！

- 有关标识和电源功率，请参阅产品背面或底部的型号铭牌。
- 在将本产品连接到电源插座上之前，请确保电源电压与产品背面或底部印刷的电压值相匹配。如果电压不同，切勿将产品连接到电源插座上。

小心受伤或损坏本产品！

- 切勿将本产品或任何物体放在电源线或其他电子设备上面。
- 如果在低于 5°C 的温度下运送了本产品，请先拆开产品的包装并等待其温度达到室温，再将其连接至电源插座。

- 本产品的部件可能由玻璃制造。请小心处理，以免受到伤害或造成损坏。

小心过热！

- 切勿将本产品安装在封闭的空间内。务必在产品周围留出至少 4 英寸的空间以便通风。确保窗帘或其他物体不会遮挡产品上的通风槽。

小心污染！

- 请勿混合使用电池（旧电池与新电池或碳电池与碱性电池，等等）。
- 电池安装不正确会有爆炸危险。只能用相同或相当的型号更换。
- 如果电池电量耗尽或遥控器长时间不用，请取下电池。
- 电池含有化学物质，因此应适当地进行处理。

吞咽电池的危險！

- 产品/遥控器可能包含纽扣式/按钮式电池，容易被吞咽。始终将电池放在儿童接触不到的地方！如不慎吞咽，电池可能导致严重受伤或死亡。摄入后 2 小时内可能发生严重的内部烧伤。
- 如果您怀疑电池不慎被吞咽或位于体内的任何部位，请立即就医。
- 更换电池时，请务必将所有新旧电池放在儿童接触不到的地方。更换电池后，确保电池仓完全紧闭。
- 如果电池仓无法完全紧闭，请不要继续使用产品。放在儿童接触不到的地方并联系制造商。



此款 II 类设备具有双重绝缘，不提供保护接地。

爱护产品

- 只能用微细纤维清洁布清洁本产品，如清除音箱布上积聚的灰尘和脱落物。切勿使用任何清洁溶剂清洁木质面板和音箱布。

- 用稍微蘸湿的软布清洁皮质提梁，先将软布浸入皮革清洁溶液，然后用干燥软布擦亮皮革。
- 由于使用天然材料，木质面板和皮质提梁的颜色和纹理可能会有所不同。

爱护环境

弃置旧产品



本产品采用可回收利用的高性能材料和组件制造而成。

弃置产品时，请不要将其与一般生活垃圾一同丢弃，应将其交给政府指定的回收中心或回收。这样做有利于环保。

帮助和支持

有关广泛的在线支持，请访问 www.philips.com/support 以：

- 下载用户手册和快速入门指南
- 观看视频教程（仅限于选定的型号）
- 查找常见问题 (FAQ) 的答案
- 通过电子邮件向我们发送问题
- 与支持代表聊天。

请按照网站上的说明选择您的语言，然后输入您的产品型号。

或者，您可以联系所在国家/地区的客户服务。联系之前，请记下产品的型号和序列号。您可在产品的背面或底部找到此信息。

开放源代码软件

本产品包含有开源软件授权许可的软件。许可和回执正文，请参阅 www.philips.com/support 网站上本产品的用户手册。Gibson Innovations Limited 特此承诺，若用户提出要求，并出具相应的许可证，我们将向其提供本产品中所用的开源软件包

的源代码副本。本承诺自购买本产品后三年内有效。要获得源代码，请联系 open-source-gi@gibson.com。如果您不想使用电子邮件，或者在寄到此电子邮件地址后一周内没有收到确认回执，请写信至“Intellectual Property Team, Gibson Innovations Limited, 5/F Philips Electronics Building, 5 Science Park East Avenue, Hong Kong Science Park, Shatin, N.T. Hong Kong”。

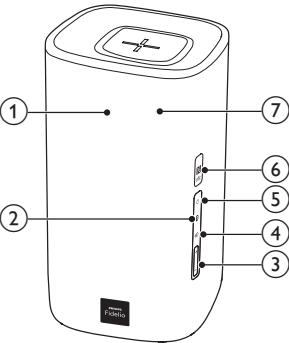
2 您的产品

感谢您的惠顾，欢迎光临飞利浦！为了您能充分享受飞利浦提供的支持（例如产品软件升级的通知），请在 www.philips.com/welcome 上注册您的产品。

主装置

本产品的主装置由左、右基座音箱组成。

右基座音箱

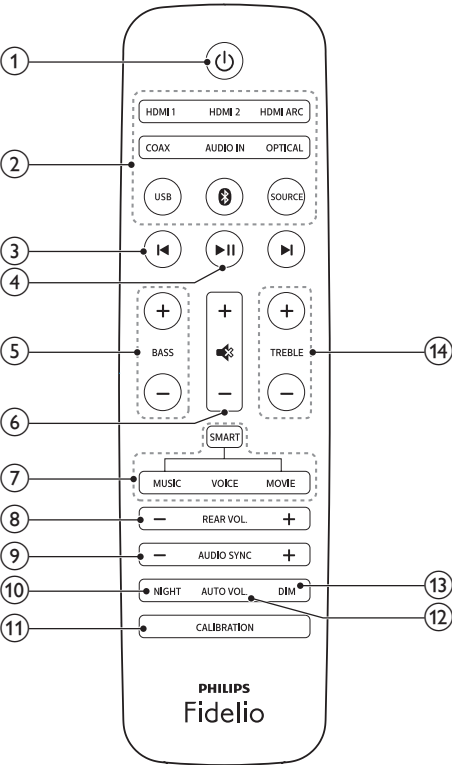


- ① 显示面板
- ② 切换至蓝牙模式（仅限于主装置）。
- ③ 音量 +/- 增大或减小音量。
- ④ 切换各种输入源。
- ⑤ 打开主装置或将其切换为待机模式。
- ⑥ **NFC** 标签
用 NFC 设备轻击此标签可实现蓝牙连接。

- ⑦ 红色指示灯
主装置切换为待机模式时亮起。

遥控器

本部分包括遥控器的概述。



- ① 打开主装置或将其切换为待机模式。
- ② 来源按钮
 - **HDMI ARC**：将来源切换至 HDMI ARC 连接。
 - **HDMI 1**：将来源切换至 HDMI IN 1 连接。
 - **HDMI 2**：将来源切换至 HDMI IN 2 连接。
 - **COAX**：将音频来源切换至同轴连接。

- **OPTICAL**：将音频来源切换至光纤连接。
- **AUDIO IN**：切换至 AUX 或 AUDIO IN（3.5 毫米插孔）模式。
- **USB**：切换至 USB 模式。
- **0**：切换至蓝牙模式（仅限于主装置）。
- **SOURCE**：切换各种输入源。

③ ⏮/⏭

跳至上一首或下一首曲目（支持 USB/ 蓝牙的播放）。

④ ▶||

开始、暂停或继续播放（支持 USB/ 蓝牙的播放）。

⑤ BASS +/-

增大或减小低音。

⑥ 音量控制

- **+/-**：增大或减小音量
- **🔊**：静音或恢复音量。

⑦ 声音模式控制

SMART：为播放的视频或音频自动选择预设的声音模式。

MUSIC：选择立体声模式。

VOICE：选择语音清晰声音模式，或者选择 **CLOSE TO ME**（靠近自己）声音模式。

MOVIE：选择环绕声模式。

⑧ REAR VOL. +/-

按下可增加或减少无线环绕音箱的音量（仅适用于环绕音箱无线连接至主装置即 **SOD** 模式已开启时的情况）。

⑨ AUDIO SYNC +/-

增大或减小音频延迟。

⑩ NIGHT

打开或关闭夜间模式。

⑪ CALIBRATION

- 按住可启用聆听区校准。
- 按三次可启用无线环绕音箱位置校准。

⑫ AUTO VOL.

打开或关闭自动音量。

⑬ DIM

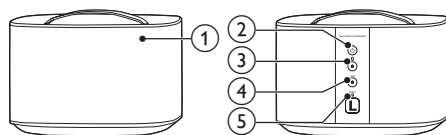
设置本产品的显示面板亮度。

⑭ TREBLE +/-

增大或减小高音。

无线环绕音箱

本产品配备一对无线环绕音箱。



* 以上图示是其中一个无线环绕音箱的概况。

① 音箱指示灯

- 环绕音箱未无线连接至主装置时，红色灯和橙色灯会交替闪烁。
- 环绕音箱与主装置实现无线连接，或电池电量充足或多于 30% 时，白灯会点亮。
- 电池电量少于 30% 时，红色灯会点亮。
- 电池电量不足 10% 时，红色灯会闪烁。
- 环绕音箱充电时（环绕音箱插接至主装置），橙色灯会点亮。

② 电源按钮

- 环绕音箱待机时，按下此键启动环绕音箱。
- 按住此键环绕音箱进入待机模式。

③ 蓝牙按钮/指示灯

- 按下此键将环绕音箱切换至蓝牙模式。
- 环绕音箱切换至蓝牙模式且未连接蓝牙设备时，指示灯会闪烁。
- 环绕音箱切换至蓝牙模式且与蓝牙设备实现连接时，指示灯会点亮。

④ SOD 按钮/指示灯

- 按下此键将环绕音箱切换至 **SOD** 模式（环绕音激活模式）。

- 环绕音箱切换至 **SOD** 模式时，指示灯会点亮。

⑤ RESET

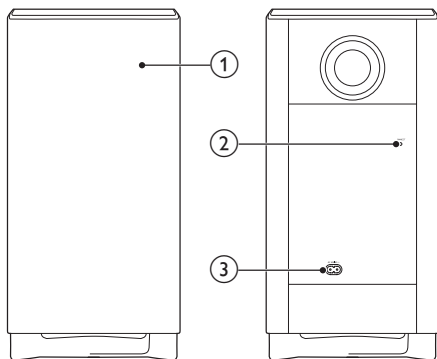
环绕音箱操作无反应时，用别针按住此键5秒将环绕音箱重置为默认设置。

注

- 如果您按无线环绕音箱上的 **Ⓢ** 按钮，则环绕音箱会与主装置断开无线连接（即 **SOD** 模式关闭）。

无线重低音音箱

本产品配备一个无线重低音音箱。



① 重低音音箱指示灯

- 重低音音箱和主装置之间未无线连接或进行无线配对时，指示灯会快速闪烁。
- 重低音音箱与主装置实现无线连接时，指示灯会点亮。
- 重低音音箱进入待机模式或无线连接断开4分钟后，指示灯会关闭。

② CONNECT (连接)

按下此键可进入重低音音箱与主装置的配对模式。

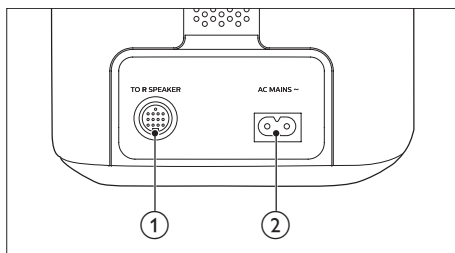
③ AC MAINS~

连接电源。

接口

此节概述本产品上的可用接口。

左基座音箱



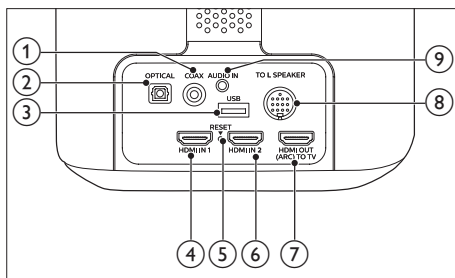
① TO R SPEAKER

用随附的 DIN 线缆与右基座音箱连接。

② AC MAINS~

连接电源。

右基座音箱



① COAX

连接至电视或数字设备的同轴音频输出插孔。

② OPTICAL

连接至电视或数字设备的光学音频输出插孔。

③ USB

- 连接至 USB 存储设备以播放音频媒体。
- 升级此产品的软件。

- ④ **HDMI IN 1**
连接至数字设备上的 HDMI 输出。
- ⑤ **RESET**
主装置操作无反应时，用别针按住此键 5秒将本产品重置为默认设置。
- ⑥ **HDMI IN 2**
连接至数字设备上的 HDMI 输出。
- ⑦ **TO TV - HDMI OUT (ARC)**
连接至电视的 HDMI (ARC) 输入。
- ⑧ **TO L SPEAKER**
用随附的 DIN 线缆与左基座音箱连接。
- ⑨ **AUDIO IN**
连接至电视或模拟设备的模拟音频输出插孔（重复按遥控器上的 **AUDIO IN** 键选择 AUDIO IN 或 AUX 输入源）。

3 连接

本节帮助您将本产品连接至电视和其他设备。

有关本产品及配件的基本连接详细信息，请参阅快速入门指南。

注

- 有关标识和电源功率，请参阅产品背面或底部的型号铭牌。
- 在建立或更改任何连接之前，请确保所有设备均已与电源插座断开连接。

连接主装置

用随附的 DIN 线缆将左右基座音箱连接一起，组成本机的主装置。有关详细信息，请参阅快速入门指南。

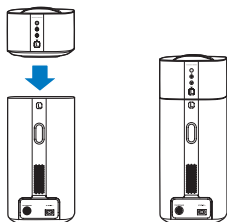
注意

- 为避免损坏产品，将随附的DIN线缆插入主装置时，需确保正确的插入方向。

为环绕音箱充电

如果已将无线环绕音箱从主装置中拔出，无线环绕音箱上的指示灯会指示其电量。

- 白色 LED 指示灯：电池电量充足或剩余 30% 以上
- 红色 LED 指示灯：电池电量不足，剩余不足 30%
- 红色 LED 指示灯闪烁：电池电量几乎耗尽，剩余不足 10%



- 1 将左右环绕音箱插接至主装置（左、右基座音箱）为环绕音箱充电。
- 2 打开主装置。
 - ➔ 充电期间，无线环绕音箱上的橙色 LED 会点亮。
 - ➔ 充满电后，无线环绕音箱上的橙色 LED 会熄灭。

注

- 无线环绕音箱充满电约需 3 小时。

与主装置手动配对连接

打开主装置、无线环绕音箱和重低音音箱时，无线环绕音箱和重低音音箱会与主装置（左、右基座音箱）自动配对，实现无线连接。如果无线环绕音箱和无线重低音音箱接收不到主装置发出的音频，就必须对主装置、无线环绕音箱和重低音音箱进行手动配对。

- 1 将无线环绕音箱插接至主装置。
- 2 打开主装置及重低音音箱。
- 3 按重低音音箱上的 **CONNECT**（连接）按钮进入配对模式。
 - ➔ 重低音音箱上的指示灯会快速闪烁。
- 4 在 HDMI ARC 模式（按 **HDMI ARC**）下，在 6 秒钟内先按 2 次遥控器上的 **⏮**，再按 1 次 **音量 +**，然后按住 **BASS +**。
 - ➔ 如果配对成功，重低音音箱上的指示灯会点亮。
 - ➔ 如果配对失败，重低音音箱上的指示灯会缓慢闪烁。

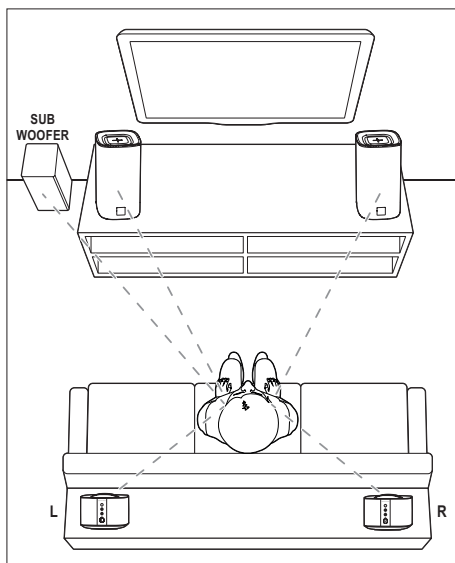
- 5 如果配对失败，请重复上述步骤。

注

- 如果无线环绕音箱接收不到主装置的音频（环绕音箱的红色灯和橙色灯会交替闪烁），将环绕音箱插接至主装置后再拔出，可实现无线连接。

摆放音箱

为了获得最佳音效，请将所有音箱朝向座位，并将各音箱放置于接近就坐时耳朵高度的位置。



注

- 环绕音效取决于房间形状和大小、墙壁和天花板类型、窗户和反射面以及扬声器声学特性等诸多因素。试验不同的音箱定位以找出适合您的最佳摆放。

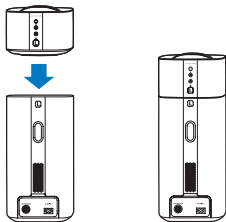
按照以下一般原则摆放音箱。

- 1 座位：
这是您聆听区域的中心。

- 2 将主装置（左、右基座音箱）摆放在座位前方。
- 3 L/ R 环绕音箱（左/右）：
将后部环绕音箱摆放于您座位的左右两侧，要么齐平，要么稍后一点。
- 4 SUBWOOFER（重低音音箱）：
将重低音音箱放置在电视左侧或右侧至少一米远。与墙壁之间留出大约 10 厘米间隙。

插接环绕音箱

您也可以将环绕音箱插接至主装置来聆听音频，例如，观看电视节目和新闻。



连接电视的音频

将本产品连接至电视。您可以通过本产品的扬声器收听电视节目的音频。

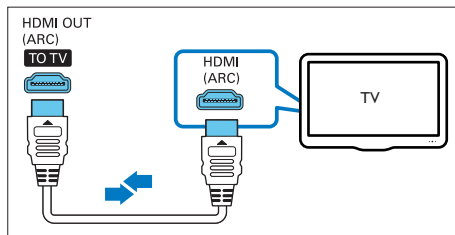
方案 1：通过 HDMI (ARC) 连接至电视

最佳质量音频

本产品支持带音频回传通道 (ARC) 功能的 HDMI。在 ARC 功能的支持下，可以使用一根 HDMI 线缆通过本产品来收听电视音频。

所需组件

- 一根高速 HDMI 线缆。
- 您的电视支持 HDMI ARC 和 HDMI-CEC（详情参见电视的用户手册）。
- 对于某些电视型号，可从电视的设置菜单中启用外部扬声器输出（详情参见电视的用户手册）。



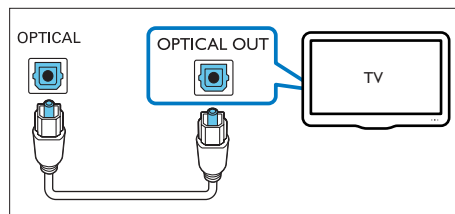
- 1 使用高速 HDMI 线缆，将本产品上的 **HDMI OUT (ARC)** 接口连接至电视上的 **HDMI ARC** 接口。
 - 电视上的 **HDMI ARC** 接口的标记可能有所不同。有关详细信息，请参阅电视用户手册。
- 2 在电视上，请打开 HDMI-CEC 操作。
 - 如果电视上出现 HDMI-CEC 问题，请参阅电视的用户手册，确保 HDMI-CEC 设置正确无误；也可根据需要进行联系电视制造商。
- 3 按下本产品遥控器上的 **HDMI ARC**，启用 HDMI ARC 连接。

注

- 不保证本产品可与所有 HDMI - CEC 设备进行互操作。
- 如果电视不兼容 HDMI ARC，则连接音频线缆，以便通过本产品收听电视音频。

方案 2：通过光纤线缆连接电视

最佳质量音频



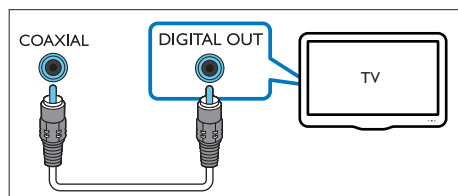
- 1 使用光纤线缆，将本产品上的 **OPTICAL** 接口连接到电视上的光纤输出。

- 电视上的数字光纤输出可能标记为 **OPTICAL OUT**、**SPDIF** 或 **SPDIF OUT**。

- 按下本产品遥控器上的 **OPTICAL**，启用光纤连接。

方案 3：通过同轴线缆连接电视

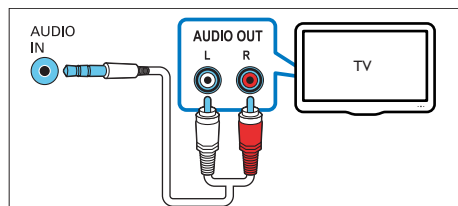
最佳质量音频



- 使用同轴线缆，将本产品上的 **COAXIAL** 接口连接到电视上的同轴输出。
 - 电视上的数字同轴输出可能标记为 **COAXIAL/DIGITAL OUT** 或 **DIGITAL AUDIO OUT**。
- 按下本产品遥控器上的 **COAX**，启用同轴连接。

方案 4：通过模拟音频线缆连接电视

基本质量音频



- 使用模拟音频线缆，将本产品上的 **AUDIO IN**（3.5 毫米插孔）连接到电视上的模拟音频输出（红白色接口）。
 - 电视上的模拟音频输出可能标记为 **AUDIO OUT**。

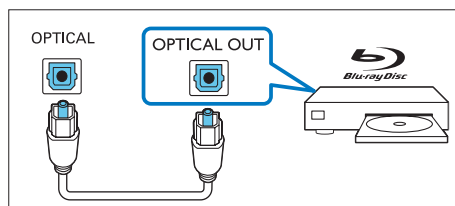
- 重复按本产品遥控器上的 **AUDIO IN**，启用模拟音频连接。
 - **AUX** 在本产品的显示屏幕上显示。

连接其他设备的音频

您也可以通过本产品的扬声器来播放其他设备的音频。

方案 1：通过光纤线缆连接其他设备

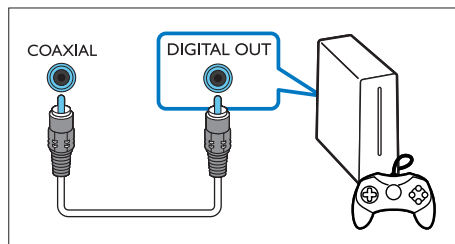
最佳质量音频



- 使用光纤线缆，将本产品上的 **OPTICAL** 接口连接到外部设备的光纤输出上。
 - 外部设备上的数字光纤输出可能标记为 **OPTICAL OUT**、**SPDIF** 或 **SPDIF OUT**。
- 按下本产品遥控器上的 **OPTICAL**，启用光纤连接。

方案 2：通过同轴线缆连接其他设备

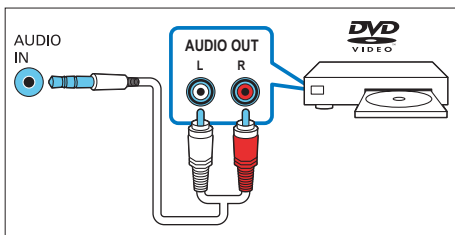
最佳质量音频



- 1 使用同轴线缆，将本产品上的 **COAXIAL** 接口连接到外部设备的同轴输出上。
 - 外部设备上的数字同轴输出可能标记为 **COAXIAL/DIGITAL OUT** 或 **DIGITAL AUDIO OUT**。
- 2 按下本产品遥控器上的 **COAX**，启用同轴连接。

方案 3：通过模拟音频线缆连接其他设备

基本质量音频



- 1 使用模拟音频线缆，将本产品上的 **AUDIO IN**（3.5 毫米插孔）连接到外部设备上的模拟音频输出（红白色接口）。
 - 外部设备上的模拟音频输出可能标记为 **AUDIO OUT**。
- 2 重复按本产品遥控器上的 **AUDIO IN**，启用模拟音频连接。
 - ↳ **AUX** 会显示在本产品的显示屏幕上。

通过 HDMI 连接数字设备

通过单一 HDMI 连接将数字设备（例如机顶盒、DVD/蓝光光盘播放机或游戏控制台）连接至本产品。使用此方法连接设备并播放文件或玩游戏时，

- 电视会自动显示视频，并且
- 音频自动在本产品上播放。

- 1 使用高速 HDMI 线缆，将数字设备上的 **HDMI OUT** 接口连接至本产品上的 **HDMI IN 1/2**。
- 2 使用高速 HDMI 线缆，将本产品上的 **HDMI OUT (ARC)** 接口连接至电视上的 **HDMI** 接口。
 - 打开电视和数字设备上的 **HDMI-CEC** 功能（若有此功能）。有关详情，请参阅电视和数字设备的用户手册。
- 3 按下本产品遥控器上的 **HDMI IN 1/2**，启用 **HDMI IN 1/2** 连接。
 - 如果电视与 **HDMI CEC** 不兼容，请在电视上选择正确的视频输入。

4 空灵校准

空灵校准用于实现以下便利性，同时优化环绕音效体验。

- 您可以根据需要随意放置无线环绕音箱。
- 根据就坐位置自动均衡无线环绕音箱的摆放。

空灵校准包括两个步骤。

- **步骤 1**：校准聆听区
- **步骤 2**：校准环绕音箱位置

何时需要校准

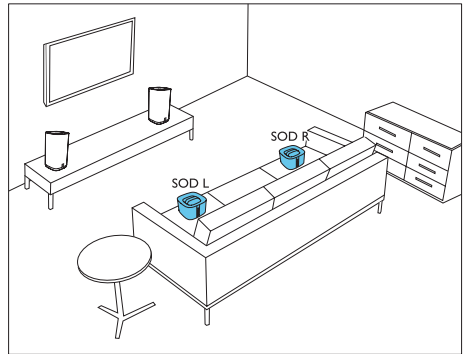
- 如果是首次执行空灵校准，则依次执行**步骤 1**和**步骤 2**。
- 如果您重新设计就坐位置布局，则依次执行**步骤 1**和**步骤 2**。
- 如果您重新定位无线环绕音箱的摆放，则单独执行**步骤 2**（可以跳过**步骤 1**）。

开始之前

- 确保房间非常安静。
- 确保左右主装置音箱之间没有被障碍物阻挡。
- 将环绕音箱朝向主装置。
- 确保主装置音箱，环绕音箱可以完全“看到”对方，中间没有任何障碍物妨碍视线。
- 左右主装置音箱之间的最小距离为 0.8 米（2.6 英尺），最大距离为 3 米（10 英尺）。
- 左右环绕音箱之间的最小距离为 0.8 米（2.6 英尺），最大距离为 6 米（20 英尺）。

步骤 1：校准聆听区

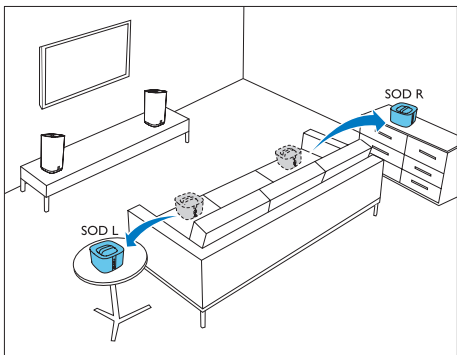
- 1 将无线环绕音箱置于您最喜欢的两个座位（如沙发上）上。
 - 确保环绕音箱与主装置已实现无线连接（按环绕音箱上的 **SOD**）。



- 2 按住遥控器上的 **CALIBRATION** 3 秒钟会启用校准。
 - ↳ **ZONE**（区域）将显示在显示面板上。
 - ↳ 您会听到无线环绕音箱发出校准音。
- 3 等待校准音结束。
 - ↳ **->SPEAKER**（扬声器）将显示在显示面板上。
- 4 然后，执行以下步骤 2（校准无线环绕音箱位置）以完成并存储新设置。

步骤 2: 校准无线环绕音箱位置

- 1 将无线环绕音箱置于您喜欢的位置。
 - 确保环绕音箱与主装置已实现无线连接（按环绕音箱上的 **SOD**）。



- 2 按 1 次 **CALIBRATION** 可启用校准。
 - 如果之前已完成了一次空灵校准，之后只是改变了无线环绕音箱的摆放位置并跳过了步骤 1（校准聆听区），这时可按 3 次 **CALIBRATION** 直接进入环绕音箱位置的校准。

→ 您会听到无线环绕音箱发出校准音。
- 3 等待校准音结束。

→ 校准成功后，显示面板上会显示 **DONE**（完成）。并将存储新设置。

注

- 空灵校准约需 3 分钟。
- 只有当无线环绕音箱未正确放置或所播放的音乐中有较强的环绕音效时，空灵校准后的环绕音效增强才会起效。
- 如果将左右环绕音箱的位置交换摆放，则在校准期间会显示几秒钟 **L<->R**，然后才完成校准。
- 校准期间，您可以按 **CALIBRATION** 取消校准，设置会恢复默认。
- 如果空灵校准失败，显示面板上会显示错误消息，例如，**FAIL**（失败），设置会恢复默认。
- 如果空灵校准失败，再次尝试时，要确保完全满足本章开头部分所述的空灵校准要点。

5 使用您的产品

本节将帮助您使用本产品播放各种来源的媒体文件。

开始之前

- 根据快速入门指南和本用户手册中所述，建立必要连接。
- 将本产品切换至对应其它设备的正确来源。

调节音量

- 1 按 音量 +/- 可增大或减小音量。
 - 要静音，请按 **MUTE**。
 - 要恢复声音，请再次按 **MUTE** 或按 音量 +/-。

仅限于无线环绕音箱

- 1 环绕音箱与主装置实现无线连接（在 **SOD** 模式下）后，按 **REAR VOL.+/-** 可增大或减小环绕音箱的音量。

选择声音

本节将帮助您选择适合于视频或音乐的声音。

声音模式

根据您的视频或音乐需求选择预定义声音模式。

- 按 **MOVIE** 可营造环绕声听觉体验，适合观看电影。
- 按 **MUSIC** 可营造双声道或多声道立体声效果，适合聆听音乐。
- 按 **VOICE** 可产生使人声听起来更清晰突出的效果。
- 按 **SMART** 可根据音频内容自动选择一种预设的声音模式（**MOVIE**，**MUSIC** 或 **VOICE**），优化音效。

CLOSE TO ME（靠近自己）

要享受极致清晰的声音而不打扰邻近的人，请将无线环绕音箱靠近自己，然后启用该功能（主装置将会静音）。

注

- 该功能仅在环绕音箱与主装置无线连接（SOD 模式打开）时适用。
- 打开 **CLOSE TO ME**（靠近自己）功能后，**MOVIE** 和 **MUSIC** 按钮的功能会被禁用。

- 1 按住 **VOICE** 3 秒钟可启用该功能。
 - ↳ **CLOSE TO ME**（靠近自己）会在显示面板上滚动一次。
 - ↳ 主装置会静音。
- 2 要退出该声音模式，再次按住 **VOICE** 3 秒钟。
 - ↳ 将切换至上次已选的声音模式。

均衡器

更改本产品的高频（高音）和低频（低音）设置。

- 1 按 **TREBLE +/-** 或 **BASS +/-** 可更改频率。

同步视频和音频

如果音频和视频不同步，请延迟音频以匹配视频。

- 1 按 **AUDIO SYNC +/-** 将音频与视频同步。
 - **AUDIO SYNC +** 可增加声音延迟，**AUDIO SYNC -** 可减少声音延迟。

自动音量调衡

切换至不同来源时，打开自动音量调衡后可保持音量恒定。其还可以压缩声音动态、增大安静场景的音量及减小大声场景的音量。

- 1 按 **AUTO VOL.** 开启或关闭自动音量。
 - ↳ 打开自动音量调衡时，**ON AUTO VOLUME** 会在显示面板上滚动一次。
 - ↳ 关闭自动音量调衡时，**OFF AUTO VOLUME** 会在显示面板上滚动一次。

夜间模式

在播放音频时，夜间模式可降低响亮声音的音量，以达到安静聆听的效果。夜间模式仅适用于杜比数字音轨。

- 1 按 **NIGHT** 开启或关闭夜间模式。
 - ↳ 打开夜间模式时，**ON NIGHT** 会在显示面板上短暂显示。
 - ↳ 关闭夜间模式时，**OFF NIGHT** 会在显示面板上短暂显示。

注

- 如果自动音量功能设置为开启，夜间模式将不能启用。

MP3 播放器

连接 MP3 播放器以播放您的音频文件或音乐。

所需组件

- 一个 MP3 播放器。
- 一根 3.5 毫米立体声音频线缆。

- 1 使用 3.5 毫米立体声音频线缆，将 MP3 播放器连接至本产品上的 **AUDIO IN** 接口。
- 2 反复按遥控器上的 **AUDIO IN**。
 - ↳ **AUDIO IN** 会在显示板上显示。
- 3 按 MP3 播放器上的按钮选择和播放音频文件或音乐。
 - 在 MP3 播放器上，建议将音量设置在最大音量的 80% 范围内。

USB 存储设备

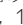
欣赏音乐 USB 存储设备中音乐，例如 MP3 播放器和 USB 闪存等等。

所需组件

- 格式为 FAT 或 NTFS 文件系统，并符合海量存储类的 USB 存储设备。

- 1 将 USB 存储设备连接至本产品。
- 2 按遥控器上的 **USB**。
- 3 使用遥控器控制播放。
 - 按下 **▶||** 可开始、暂停或继续播放。
 - 按下 **◀** 或 **▶** 可跳至上一个或下一个曲目。
 - 在 USB 播放期间，按 **USB** 选择下列任一播放模式。
 - **RPT TRACK**：重复播放当前曲目。
 - **RPT ALL**：重复播放一个文件夹中的所有曲目。
 - **SHUFFLE**：随机播放一个文件夹中的曲目。
 - **RPT OFF**：退出重复或随机播放模式。

注

- 本产品可能不兼容某些类型的 USB 存储设备。
- 如果您使用 USB 延长线、USB 集线器或 USB 多功能阅读器，则可能无法识别 USB 存储设备。
- 不支持数码相机 PTP 和 MTP 协议。
- 不要在读取文件时移除 USB 存储设备。
- 不支持受 DRM 保护的音频文件（MP3）。
- 支持 USB 端口：5 伏 ，1 安。

通过蓝牙播放音频

通过蓝牙，将本产品连接到蓝牙设备（如 iPad、iPhone、iPod touch、Android 手机或笔记本电脑），然后便可以通过本产品的音箱来聆听该设备上存储的音频文件。

所需组件

- 支持 A2DP、AVRCP 蓝牙规格并具有蓝牙版本 4.1 的蓝牙设备。
- 主装置与蓝牙设备之间的最大操作范围约为 10 米（30 英尺）。

注

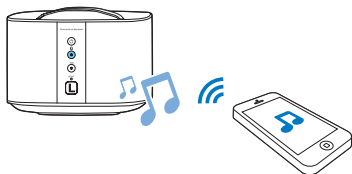
- 音乐传输可能因设备与本产品之间的障碍物而中断，如墙壁、设备的金属外壳或附近以相同频率工作的其他设备。
- 如果要本产品与其他蓝牙设备连接，按住遥控器上的 **Ⓢ** 便可断开当前连接的蓝牙设备。

主装置的蓝牙

- 1 按遥控器上的 **Ⓢ** 可将本产品切换至蓝牙模式。
↳ **BT** 将显示在显示面板上，持续闪烁。
- 2 在蓝牙设备上，开启蓝牙，搜索并选择 **Philips E6** 以开始连接（有关如何启用蓝牙功能，请参阅蓝牙设备用户手册）。
↳ 连接期间，显示面板上的 **BT** 会闪烁。
- 3 等待本产品发出蜂鸣音。
↳ 蓝牙连接成功时，**BT** 将显示在显示面板上。
↳ 如果连接失败，显示面板上的 **BT** 会持续闪烁。
- 4 选择并播放蓝牙设备上的音频文件或音乐。
 - 播放期间，如有通话接入，音乐播放会暂停。通话结束后继续播放（该功能的实现取决于所连接的蓝牙手机）。
 - 如果蓝牙设备支持 AVRCP 规格，您可以按遥控器上的 **◀** / **▶** 跳至某首曲目，或按 **▶||** 暂停/继续播放。
 - 如果音乐传输中断，则将蓝牙设备移近主装置。
- 5 要退出蓝牙功能，请选择其他来源。
↳ 切换回蓝牙模式后，蓝牙连接仍会处于活动状态。
 - 要断开当前蓝牙连接，请按住遥控器上的 **Ⓢ**。

单个环绕音箱的蓝牙

可将一个环绕音箱作为独立于主装置的一个蓝牙音箱使用。



- 1 按左或右环绕音箱上的 **Ⓢ** 按钮可切换至蓝牙模式。
↳ 左或右环绕音箱上的 **Ⓢ** 指示灯会闪烁。
- 2 在蓝牙设备上，打开蓝牙功能，搜索和选择左或右环绕音箱的名称，并进行连接（有关如何启用蓝牙，请参阅蓝牙设备用户手册）。
 - **Philips E6 -L** 代表左环绕音箱；
Philips E6 -R 代表右环绕音箱。
 - ↳ 连接期间，左或右环绕音箱上的 **Ⓢ** 指示灯会闪烁。
- 3 等待环绕音箱上的 **Ⓢ** 指示灯亮起。
↳ 如果连接成功，会听到连接音，并且环绕音箱上的 **Ⓢ** 指示灯会亮起。
↳ 如果连接失败，环绕音箱上的 **Ⓢ** 指示灯会闪烁。
- 4 选择并播放蓝牙设备上的音频文件或音乐。
 - 播放期间，如有通话接入，音乐播放会暂停。通话结束后继续播放（该功能的实现取决于所连接的蓝牙手机）。
 - 如果音乐传输中断，则将蓝牙设备移近正使用的环境音箱。
- 5 要退出蓝牙模式，按环绕音箱上的 **SOD** 按钮。
↳ 切换回蓝牙模式后，蓝牙连接便会恢复。
 - 要断开当前蓝牙连接，请按住环绕音箱上的 **Ⓢ** 按钮。

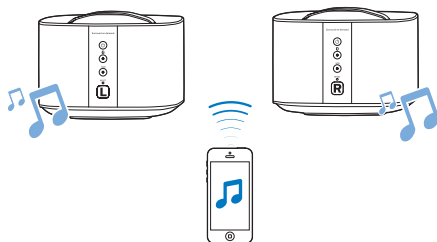
注

- 遥控器的功能不适用于单个蓝牙音箱（即左或右环绕音箱）。

立体声环绕音箱的蓝牙

也可将左右两个环绕音箱进行配对，合并成独立于主装置的一个整体，产生具立体声效果的蓝牙播放。

此功能中，左环绕音箱为主音箱，右环绕音箱为副音箱。



- 1 分别按左和右环绕音箱上的 **Ⓢ** 按钮，将两个音箱切换至蓝牙模式。
 - 确保左右环绕音箱已打开。
 - 确保右环绕音箱已断开跟其它设备的蓝牙连接。
 - ↳ 左右环绕音箱上的 **Ⓢ** 指示灯会闪烁。
- 2 按左和右环绕音箱的 **Ⓢ** 按钮后进入配对模式。
↳ 左环绕音箱上的 **Ⓢ** 指示灯会闪烁，右环绕音箱上的 **Ⓢ** 指示灯会点亮。这种指示说明右环绕音箱已连接至左环绕音箱。
- 3 在蓝牙设备上，开启蓝牙，搜索并选择 **Philips E6 -L** 开始蓝牙连接（有关如何启用蓝牙功能，请参阅蓝牙设备用户手册）。
↳ 左环绕音箱与蓝牙设备连接期间，左环绕音箱上的 **Ⓢ** 灯继续闪烁。

- 4 等待左环绕音箱上的 **Ⓢ** 指示灯亮起。
 - ➔ 如果左环绕音箱与蓝牙设备成功连接，左环绕音箱上的 **Ⓢ** 指示灯会亮起。
 - ➔ 如果左环绕音箱与蓝牙设备连接不成功，左环绕音箱上的 **Ⓢ** 指示灯会持续闪烁。
- 5 选择并播放蓝牙设备上的音频文件或音乐。
 - 播放期间，如有通话接入，音乐播放会暂停。通话结束后继续播放（该功能的实现取决于所连接的蓝牙手机）
 - 如果音乐传输中断，则将蓝牙设备移近左环绕音箱。
- 6 要断开右环绕音箱与左环绕音箱的蓝牙连接，按右环绕音箱上的 **SOD** 按钮，或按左环绕音箱上的 **SOD** 按钮退出蓝牙模式，或直接停止蓝牙播放。
 - 要断开当前蓝牙连接，可按住左环绕音箱的 **Ⓢ**。

注

- 遥控器的功能不适用于左右环绕音箱互相相对的蓝牙播放。

通过 NFC 连接蓝牙

NFC（近场通信）是一种用于手机等 NFC 设备之间进行短距离无线通信的技术。

所需组件

- 具有 NFC 功能的蓝牙设备。
- 要进行配对，请用 NFC 设备轻击主装置的 **NFC** 标签。

注

- NFC 功能仅适用于主装置，不适用于左和右环绕音箱。

- 1 在蓝牙设备上启用 NFC（有关详细信息，请参阅设备用户手册）。

- 2 用 NFC 设备轻击主装置的 **NFC** 标签，直至本产品发出蜂鸣音。
 - 首次连接时，某些移动设备会出现配对提示，选择“是”进行连接。
 - ➔ 蓝牙连接成功时，**BT** 将显示在显示面板上。
 - ➔ 如果连接失败，显示面板上的 **BT** 会持续闪烁。
- 3 选择并播放 NFC 设备上的音频文件或音乐。
 - 要断开连接，请再次用 NFC 设备轻击主装置的 **NFC** 标签。

自动待机

播放所连接设备中的媒体时，如果按钮处于不活动状态 15 分钟，并且未播放所连接设备中的音频/视频，则本产品会自动切换至待机模式。

设置显示屏亮度

您可以反复按 **DIM** 改变本产品显示面板的显示亮度级别。

如果选择 **DIM 0**，并且 10 秒钟内未操作任何按钮，本产品的屏幕将会关闭，不显示信息。

应用出厂设置

如果本产品操作无反应，可将本产品重置为出厂时设定的默认设置。

- 1 分别在右基座音箱和左右环绕音箱上，用别针按住 **RESET** 按钮 5 秒可恢复出厂设置。
 - ➔ 恢复出厂设置完成后，产品将自动关闭并重启。

6 更新软件



注意

- 在软件更新过程中，请勿关闭电源或移除 USB 存储设备，因为这样做可能会损坏本产品。

为了获得最佳功能及支持，请使用最新软件更新您的产品。

检查软件版本

在 HDMI ARC 模式（按 **HDMI ARC**）下，在 6 秒钟内先按 2 次遥控器上的 **⏮**，再按 1 次 **TREBLE -**，然后按住 **BASS -**。
→ 软件版本号将显示在显示面板上。

通过 USB 设备更新软件

- 在 www.philips.com/support 上检查最新的软件版本。
 - 搜索您的型号，然后单击“软件和驱动程序”。
- 将软件下载到 USB 存储设备上。
 - ① 将下载的文件解压，需确保解压后的文件夹名为“**UPG**”。
 - ② 将“**UPG**”文件夹放在根目录中。
- 将 USB 存储设备连接至本产品上的 **USB** 接口。
- 按下 **HDMI ARC**，将本产品切换至 HDMI ARC 来源。
- 在遥控器上，在 6 秒钟内先按两下 **⏮**，再按一下 **音量 +**，然后按住 **MOVIE**。
 - 更新过程中，显示板会显示“**UPG XX**”，“**XX**”指的是完成更新进度的百分比。
 - 更新完成，本产品会自动关闭并重新打开。
 - 如果更新失败，显示板会显示“**ERROR**”（失败），然后本产品会自动关闭并重新打开，并会提示要重新启动更新。

7 产品规格

注

- 规格和设计如有更改，恕不另行通知。

功放器

- 总输出功率: 192 瓦 RMS
(+/- 0.5 分贝, 10% THD)
- 频率响应:
20 赫兹 - 20 千赫兹 / +/- 3 分贝
- 信噪比: > 65 dB (CCIR) / (A 加权)
- 输入灵敏度:
 - AUDIO IN: 500 毫伏
 - AUX: 1000 毫伏

音频

- S/PDIF 数字音频输入
 - 同轴: IEC 60958-3
 - 光纤: TOSLINK

USB

- 兼容性: 高速 USB (2.0)
- 类别支持: USB 海量存储类 (MSC)
- 文件系统: FAT16、FAT32、NTFS
- 支持的音频文件格式: .aac, .mka, .mp3, .wav, .m4a, .flac, .ogg, .ape, .dsf, .dff

蓝牙

- 蓝牙规格: A2DP、AVRCP
- 蓝牙版本: 4.1

主装置 (左右基座音箱)

- 电源: 110-240 伏; 50-60 赫兹
- 功耗: 70 瓦
- 待机功耗: ≤ 0.5 瓦
- 尺寸 (宽 × 高 × 厚):
161 × 302 × 161 毫米
- 重量: 2.4 千克/个

- 内置扬声器:
 - 左/右声道:
2个低音扬声器 (76.2 毫米/3英寸, 8 欧姆) + 2个高音扬声器 (25.4 毫米/1英寸, 8 欧姆)
 - 中声道: 2个全频 (76.2 毫米/3英寸, 8 欧姆)

环绕音箱

- 阻抗: 8 欧姆
- 扬声器驱动器:
2 个 63.5 毫米 (2.5英寸) 全频
- 尺寸 (宽 × 高 × 厚):
161 × 111 × 161 毫米
- 重量: 1 千克/个

重低音音箱

- 电源: 110-240 伏; 50-60 赫兹
- 功耗: 30 瓦
- 待机功耗: ≤ 0.5 瓦
- 阻抗: 4 欧姆
- 扬声器驱动器: 1 个 165 毫米 (6.5 英寸) 低音扬声器
- 尺寸 (宽 × 高 × 厚):
222 × 441 × 222 毫米
- 重量: 5.4 千克

遥控器电池

- 2 节 1.5 伏 AAA-R03

8 故障种类和 处理方法



警告

- 存在触电危险。切勿拆下本产品的外壳。

为保证保修的有效性，切勿尝试自行维修本产品。

如果在使用本产品时遇到问题，请在申请服务之前检查以下事项。如果仍遇到问题，请在 www.philips.com/support 页面上获得支持。

主装置

本产品上的按钮不起作用。

- 将本产品的电源断开几分钟，然后重新连接。

声音

本产品的音箱没有声音。

- 用音频线缆将本产品连接至电视或其他设备。然而，在以下情况下，无需单独的音频连接：
 - 本产品和电视通过 **HDMI ARC** 进行连接，或
 - 当设备连接至本产品的 **HDMI IN** 接口时。
- 确保将本产品上的音频输入连接至电视或其他设备上的音频输出。
- 将本产品重置为出厂设置。
- 在遥控器上，选择正确的音频输入。
- 确保本产品未静音。

无线环绕音箱没有声音。

- 确保无线环绕音箱已打开。按无线环绕音箱的 **⏻**。
- 将无线环绕音箱插接至主装置，为电池充电。
- 如果要将环绕音箱与主装置实现无线连接，确保按下无线环绕音箱的 **SOD** 按钮。

- 如果要将无线环绕音箱作为单个蓝牙音箱使用，确保无线环绕音箱与设备已实现蓝牙。

无线重低音音箱和无线环绕音箱接收不到主装置发出的音频。

- 在无线重低音音箱和主装置之间进行手动配对，实现无线连接。
- 将无线环绕音箱插接至主装置，再拔出可实现无线连接。

声音失真或有回声。

- 如果通过本产品播放电视的音频，确保将电视静音。

音频和视频不同步。

- 按 **AUDIO SYNC +/-** 将音频与视频同步。

蓝牙

设备无法与本产品连接。

- 设备不支持本产品所需的兼容规格。
- 您尚未启用设备的蓝牙功能。有关如何启用该功能，请参阅设备的用户手册。
- 设备未正确连接。正确连接设备。
- 本产品已连接其他蓝牙设备。断开连接的设备，然后重试。

播放所连接蓝牙设备中的音频时音质较差。

- 蓝牙接收质量较差。将设备移近本产品，或移除设备与本产品之间的任何障碍物。

所连接的蓝牙设备时断时续。

- 蓝牙接收质量较差。将设备移近本产品，或移除设备与本产品之间的任何障碍物。
- 关闭蓝牙设备的 Wi-Fi 功能以避免干扰。
- 对于某些蓝牙设备，为节省电量可能会自动禁用蓝牙连接。这并不表示本产品存在故障。

NFC

设备无法通过 **NFC** 与本产品连接。

- 确保设备支持 **NFC**。
- 确保设备已启用 **NFC**（有关详细信息，请参阅设备用户手册）。
- 要进行配对，请用 **NFC** 设备轻击本产品的 **NFC** 标签。

空灵校准

为何需要进行空灵校准？

- 空灵校准可在无线环绕音箱未正确放置时优化环绕声体验。

空灵校准成功后，环绕声改善并不明显。

- 只有无线环绕音箱未正确放置或所播放的音乐中有较强的环绕音效时，校准后的环绕音效增强才会起效。

显示面板上显示错误消息。

- 如果空灵校准失败，则会显示以下任一错误消息。有关重新校准的详细信息，请参阅第四章（空灵校准）的内容。
 - **FAIL**（失败）：表示无线环绕音箱未处于 **SOD** 模式或超出校准范围，或者有一些障碍物使得主装置和无线环绕音箱之间无法完全“看到”对方。
 - **BATT LOW**（电池电量不足）：表示无线环绕音箱的电池电量不足。
 - **ERROR**（错误）：表示无线环绕音箱未从主装置里拔出。

Contents

1 Important	2	6 Update software	20
Safety	2	Check software version	20
Care for your product	3	Update software via USB	20
Care of the environment	3		
Help and support	3	7 Product specifications	21
Open source software	3		
2 Your product	4	8 Troubleshooting	22
Main unit	4		
Remote control	4		
Wireless surround speakers	5		
Wireless subwoofer	6		
Connectors	7		
3 Connect	8		
Connect the main unit	8		
Charge speakers	8		
Manual pair-up with the main unit	8		
Place speakers	9		
Connect audio from TV	9		
Connect audio from other devices	11		
Connect digital devices through HDMI	12		
4 Spatial calibration	13		
Step 1: calibrate the listening zone	13		
Step 2: calibrate the surround speaker position	14		
5 Use your product	15		
Adjust the volume	15		
Choose your sound	15		
MP3 player	16		
USB storage devices	16		
Play music via Bluetooth	17		
Connect Bluetooth via NFC	19		
Auto standby	20		
Set display brightness	20		
Apply factory settings	20		

1 Important

Read and understand all instructions before you use your product. If damage is caused by failure to follow instructions, the warranty does not apply.

Safety

Risk of electric shock or fire!

- Before you make or change any connections, make sure that all devices are disconnected from the power outlet.
- Never expose the product and accessories to rain or water. Never place liquid containers, such as vases, near the product. If liquids are spilt on or into the product, disconnect it from the power outlet immediately. Contact Consumer Care to have the product checked before use.
- Never place the product and accessories near naked flames or other heat sources, including direct sunlight.
- Never insert objects into the ventilation slots or other openings on the product.
- Where the mains plug or an appliance coupler is used as the disconnect device, the disconnect device shall remain readily operable.
- Batteries (battery pack or batteries installed) shall not be exposed to excessive heat such as sunshine, fire or the like.
- Disconnect the product from the power outlet before lightning storms.
- When you disconnect the power cord, always pull the plug, never the cable.

Risk of short circuit or fire!

- For identification and supply ratings, see the type plate at the back or bottom of the product.
- Before you connect the product to the power outlet, ensure that the power voltage matches the value printed on the

back or bottom of the product. Never connect the product to the power outlet if the voltage is different.

Risk of injury or damage to this product!

- Never place the product or any objects on power cords or on other electrical equipment.
- If the product is transported in temperatures below 5°C, unpack the product and wait until its temperature matches room temperature before connecting it to the power outlet.
- Parts of this product can be made of glass. Handle with care to avoid injury and damage.

Risk of overheating!

- Never install this product in a confined space. Always leave a space of at least four inches around the product for ventilation. Ensure curtains or other objects never cover the ventilation slots on the product.

Risk of contamination!

- Do not mix batteries (old and new or carbon and alkaline, etc.).
- Danger of explosion if batteries are incorrectly replaced. Replace only with the same or equivalent type.
- Remove batteries if they are exhausted or if the remote control is not to be used for a long time.
- Batteries contain chemical substances, they should be disposed of properly.

Risk of swallowing batteries!

- The product/remote control may contain a coin/button type battery, which can be swallowed. Keep the battery out of reach of children at all times! If swallowed, the battery can cause serious injury or death. Severe internal burns can occur within two hours of ingestion.
- If you suspect that a battery has been swallowed or placed inside any part of the body, seek immediate medical attention.

- When you change the batteries, always keep all new and used batteries out of reach of children. Ensure that the battery compartment is completely secure after you replace the battery.
- If the battery compartment cannot be completely secured, discontinue use of the product. Keep out of reach of children and contact the manufacturer.



This is CLASS II apparatus with double insulation, and no protective earth provided.

Care for your product

- Use only microfiber cloth to clean the product, such as removing dust and shedding accumulated on the speaker cloth. Do not use any cleaning solvent to clean the wooden panels and speaker cloth.
- Clean the leather handles with a slightly damp soft cloth which is dipped in a leather cleaning solution, then buff the leather with a dry soft cloth.
- The wooden panels and leather handles may vary on color and grain pattern due to the use of natural materials.

Care of the environment

Disposal of your old product



Your product is designed and manufactured with high quality materials and components, which can be recycled and reused. Do not throw away the product with the normal household waste at the end of its life, but hand it in at an official collection point or recycling. By doing this, you help to preserve the environment.

Help and support

For extensive online support, visit www.philips.com/support to:

- download the user manual and the quick start guide
- watch video tutorials (available only for selected models)
- find answers to frequently answered questions (FAQs)
- email us a question
- chat with our support representative.

Follow the instructions on the website to select your language, and then enter your product model number.

Alternatively, you can contact Consumer Care in your country. Before you contact, note down the model number and serial number of your product. You can find this information on the back or bottom of your product.

Open source software

This product contains software licensed under an open source license. For acknowledgements and license texts, please refer to your product's user manual on www.philips.com/support. Gibson Innovations Limited hereby offers to deliver, upon request, a copy of the corresponding source code for the open source software packages used in this product for which such offer is requested by the respective licenses. This offer is valid up to three years after product purchase. To obtain source code, please contact open.source-gi@gibson.com. If you prefer not to use email or if you do not receive confirmation receipt within a week after mailing to this email address, please write to Open Source Team, Gibson Innovations Limited, 5/F Philips Electronics Building, 5 Science Park East Avenue, Hong Kong Science Park, Shatin, N.T. Hong Kong.

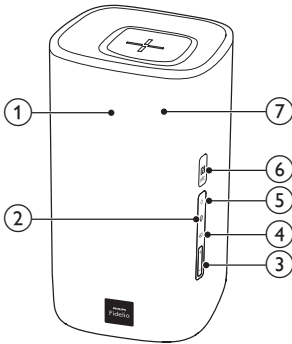
2 Your product

Congratulations on your purchase, and welcome to Philips! To fully benefit from the support that Philips offers, register your product at www.philips.com/welcome.

Main unit

The main unit of this product is comprised of left and right base speakers.

Right base speaker

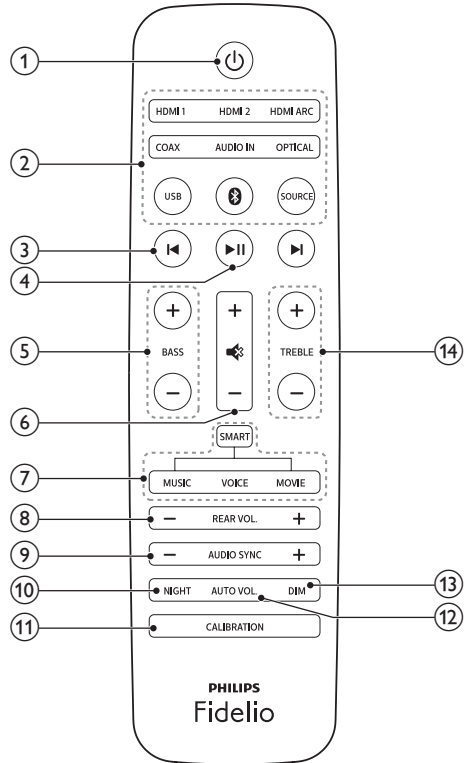


- ① Display panel
- ② Switch to Bluetooth mode (main unit only).
- ③ +/- (Volume) Increase or decrease volume.
- ④ Toggle through all sources.
- ⑤ Switch the main unit on or to standby.
- ⑥ **NFC tag**
Tap the NFC-enabled device on the tag for Bluetooth connection.

- ⑦ **Red LED**
Lights up when the main unit is switched to standby.

Remote control

This section includes an overview of the remote control.



- ① Switch the main unit on or to standby.
- ② **Source buttons**
 - **HDMI ARC:** Switch your source to the HDMI ARC connection.
 - **HDMI 1:** Switch your source to the HDMI IN 1 connection.
 - **HDMI 2:** Switch your source to the HDMI IN 2 connection.

- **COAX:** Switch your audio source to the coaxial connection.
- **OPTICAL:** Switch your audio source to the optical connection.
- **AUDIO IN:** Toggle audio source between AUX or AUDIO IN connection (3.5mm jack).
- **USB:** Switch to USB mode.
- **0 :** Switch to Bluetooth mode (main unit only).
- **SOURCE:** Toggle through all sources.

③ ⏮ / ⏭

Skip to the previous or next track (for USB/ Bluetooth).

④ ▶ ||

Start, pause or resume play (for USB/ Bluetooth).

⑤ BASS +/-

Increase or decrease bass on the main unit.

⑥ Volume control

- **+/-:** Increase or decrease volume.
- **🔇:** Mute or restore volume.

⑦ Sound mode control

SMART: Automatically select a predefined sound mode to suit your video or music.

MUSIC: Select stereo sound mode.

VOICE: Select voice clarity or **CLOSE TO ME** (close to me) sound mode.

MOVIE: Select surround sound mode.

⑧ REAR VOL. +/-

Press to increase or decrease volume of the wireless surround speakers (only applicable when the surround speakers are wirelessly connected to the main unit (or SOD mode switches on)).

⑨ AUDIO SYNC +/-

Increase or decrease audio delay.

⑩ NIGHT

Turn night mode on or off.

⑪ CALIBRATION

- Press and hold to trigger calibration for listening zone.

- Press three times to trigger calibration for the wireless surround speakers position.

⑫ AUTO VOL.

Turn auto volume on or off.

⑬ DIM

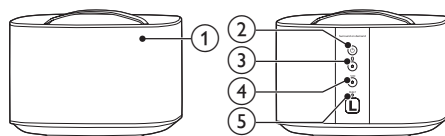
Set the brightness of the display panel for this product.

⑭ TREBLE +/-

Increase or decrease treble on the main unit.

Wireless surround speakers

This product comes with a pair of wireless surround speakers.



* The illustration above is for either of wireless surround speakers.

① Speaker LED

- **Blinks in red and orange alternatively** if the surround speaker is not wirelessly connected to the main unit.
- **Lights up white** when the surround speaker is wirelessly connected to the main unit, or when the battery capacity is full or more than 30% remaining.
- **Lights up red** when the battery capacity is less than 30% remaining.
- **Blinks red** when the battery capacity is less than 10% remaining.
- **Lights up orange** when the surround speaker is being charged (only for the surround speakers docked onto the main unit).

②

- Press to turn on the surround speaker if it automatically goes to standby.
- Press and hold to switch the surround speaker to standby.

③ button/LED

- Press to switch the surround speaker to Bluetooth mode.
- The LED blinks when you switch the surround speaker to Bluetooth and no Bluetooth devices are connected.
- The LED lights up when you switch the surround speaker to Bluetooth and Bluetooth devices are connected.

④ SOD button/LED

- Press to switch the surround speaker to **SOD** (surround on demand) mode.
- The LED lights up white when the surround speaker is switched to **SOD** mode.

⑤ RESET

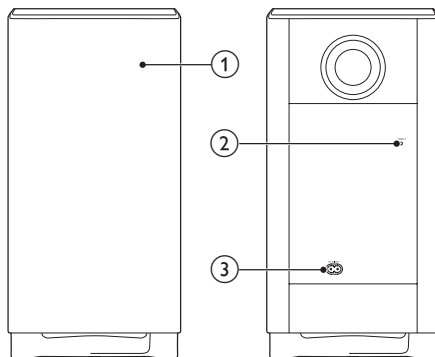
In case of no response from the surround speaker, press and hold with a pin for 5 seconds to reset the surround speaker to the default settings.

Note

- If you press the  button on the surround speaker; the surround speaker disconnects the main unit (or **SOD** mode switches off).

Wireless subwoofer

This product comes with a wireless subwoofer.



① Subwoofer indicator

- Blinks when the subwoofer is not connected, or being connected, to the main unit.
- Lights up when the subwoofer is connected to the main unit.
- Lights off when the subwoofer goes to standby, or wireless connection is disconnected for 4 minute.

② CONNECT (connect)

Press to enter the pairing mode for connection with the main unit.

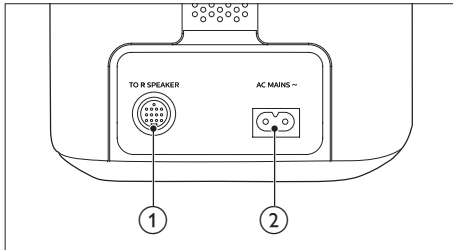
③ AC MAINS~

Connect to the power supply.

Connectors

This section includes an overview of the connectors available on this product.

On the left base speaker



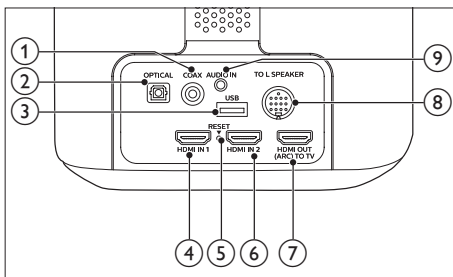
① **TO R SPEAKER**

Connect to the right base speaker with the supplied DIN cable.

② **AC MAINS~**

Connect to the power supply.

On the right base speaker



① **COAX**

Connect to a coaxial audio output on the TV or a digital device.

② **OPTICAL**

Connect to an optical audio output on the TV or a digital device.

③ **USB**

- Connect to a USB storage device for audio media play.
- Upgrade software of this product.

④ **HDMI IN 1**

Connect to the HDMI output on a digital device.

⑤ **RESET**

In case of no response from the main unit, press and hold with a pin for 5 seconds to reset this product to the factory settings.

⑥ **HDMI IN 2**

Connect to the HDMI output on a digital device.

⑦ **TO TV - HDMI OUT (ARC)**

Connect to the HDMI (ARC) input on the TV.

⑧ **TO L SPEAKER**

Connect to the left base speaker with the supplied DIN cable.

⑨ **AUDIO IN**

Connect to an audio output on a device via AUDIO IN or AUX source (by pressing repeatedly **AUDIO IN** on the remote control).

3 Connect

This section helps you connect this product to a TV and other devices, and then set it up. For information about the basic connections of this product and accessories, see the quick start guide.

Note

- For identification and supply ratings, see the type plate at the back or bottom of the product.
- Before you make or change any connections, make sure that all devices are disconnected from the power outlet.

Connect the main unit

With the supplied DIN cable, connect the left base speaker to the right base speaker as main unit. See the quick start guide for details.

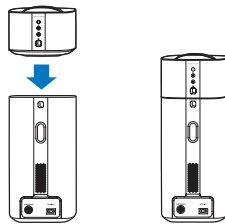
Caution

- When you plug the supplied DIN cable into the connectors on the main unit, make sure that you plug the DIN cable in the correct orientation to prevent product damage.

Charge speakers

If the wireless surround speaker is undocked from the main unit, its battery level is indicated by the indicators on the wireless speaker.

- **Light up white:** full battery or more than 30% capacity remaining
- **Light up red:** low battery level, less than 30% remaining
- **Blink red:** near empty, less than 10% remaining



- 1 Dock the left and right wireless speakers onto the main unit (left and right base speakers) to charge the speakers.
- 2 Turn on the main unit.
 - ↳ During charging, the orange LED on the wireless speaker lights up.
 - ↳ When fully charged, the orange LED on the wireless speaker turns off.

Note

- It may take around 3 hours to fully charge the speakers.

Manual pair-up with the main unit

The wireless speakers and subwoofer automatically pair up with the main unit (left and right base speakers) for wireless connection when you turn on the main unit, the speakers and the subwoofer.

If audio from the main unit cannot be heard through the wireless speakers and subwoofer, manual pair up with the main unit is required.

- 1 Dock the wireless surround speakers onto the main unit.
- 2 Turn on the main unit and the subwoofer.
- 3 Press the **CONNECT** (connect) button on the subwoofer to enter the pairing mode.
 - ↳ The indicator on the subwoofer blinks quickly.

- 4 In HDMI ARC mode (press **HDMI ARC**), within six seconds, on the remote control, press **Volume +** twice then **Volume +** once, and then hold down **BASS +**.

➡ If the pairing succeeds, the indicator on the subwoofer lights up.

➡ If the pairing fails, the indicator on the subwoofer blinks slowly.

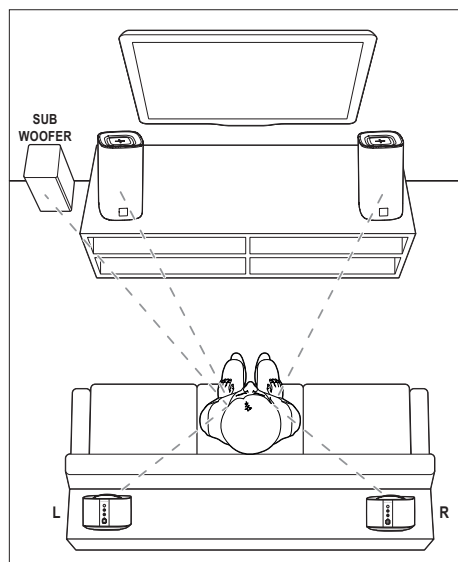
- 5 If the pairing fails, repeat the steps above.

Note

- If there is no sound from the wireless surround speakers which are undocked (or the LED on the wireless surround speaker blinks in red and orange alternatively), you may dock then undock the surround speakers to make wireless connection with the main unit.

Place speakers

For best sound effect, position all the speakers towards the seating position and place them close to your ear level (seated).



Note

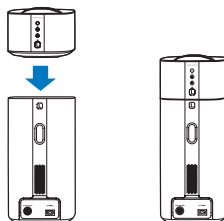
- Surround sound depends on factors such as room shape and size, type of wall and ceiling, windows and reflective surfaces, and speaker acoustics. Experiment with the speaker positions to find the optimum setting for you.

Follow these general guidelines for speakers placement.

- 1 **Seating position:**
This is the center of your listening area.
- 2 Place the main unit (left and right base speakers) in front of the seating position.
- 3 **L/ R surround speakers (left/right):**
Place the rear surround speakers to the left and right side of your seating position, either in line with it or slightly behind it.
- 4 **SUBWOOFER (subwoofer):**
Place the subwoofer at least one meter to the left or right of the TV. Leave about 10-centimeter clearance from the wall.

Dock the surround speakers

You can also dock your surround speakers onto the main unit to listen to audio, for example, watching TV shows and news.



Connect audio from TV

Connect this product to a TV. You can listen to audio from TV programs through the speakers of this product.

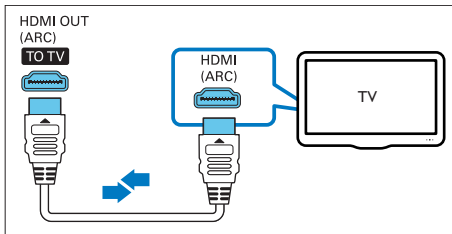
Option 1: Connect to TV through HDMI (ARC)

Best quality audio

This product supports HDMI with Audio Return Channel (ARC). With the ARC feature, you can hear the TV audio through this product by using a single HDMI cable.

What you need

- A High Speed HDMI Cable.
- Your TV supports both HDMI ARC and HDMI-CEC (see the TV user manual for details).
- For some TV models, enable the external speaker output from the TV setting menu (see the TV user manual for details).



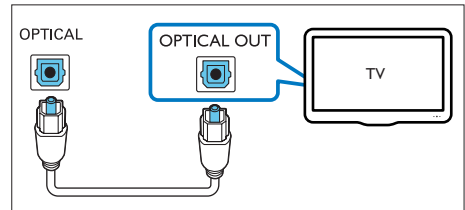
- 1 Using a High Speed HDMI cable, connect the **HDMI OUT (ARC)** connector on this product to the **HDMI ARC** connector on the TV.
 - The **HDMI ARC** connector on the TV might be labeled differently. For details, see the TV user manual.
- 2 On your TV, turn on HDMI-CEC operations.
 - For HDMI-CEC issues on your TV, see the TV user manual to make sure that the HDMI-CEC setup is correct, or contact the TV manufacturer if needed.
- 3 Press **HDMI ARC** on the remote control of this product to enable the HDMI ARC connection.

Note

- 100% interoperability with all HDMI-CEC devices is not guaranteed.
- If your TV is not HDMI ARC compliant, connect an audio cable to hear the TV audio through this product.

Option 2: Connect to TV through optical cable

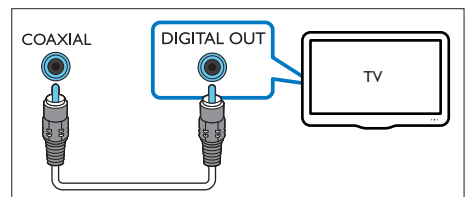
Best quality audio



- 1 Using an optical cable, connect the **OPTICAL** connector on this product to the optical output on the TV.
 - The digital optical output on the TV might be labeled **OPTICAL OUT**, **SPDIF** or **SPDIF OUT**.
- 2 Press **OPTICAL** on the remote control of this product to enable the optical connection.

Option 3: Connect to TV through coaxial cable

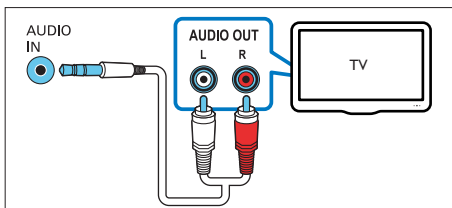
Best quality audio



- 1 Using a coaxial cable, connect the **COAXIAL** connector on this product to the coaxial output on the TV.
 - The digital coaxial output on the TV might be labeled **COAXIAL/DIGITAL OUT** or **DIGITAL AUDIO OUT**.
- 2 Press **COAX** on the remote control of this product to enable the coaxial connection.

Option 4: Connect to TV through analog audio cables

Basic quality audio



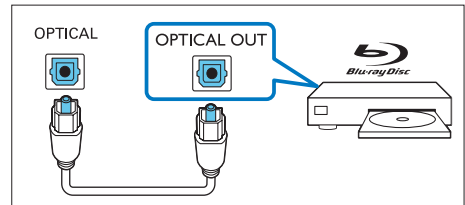
- 1 Using an analog cable, connect the **AUDIO IN** (3.5mm jack) on this product to the analog audio output (red and white) on the TV.
 - The analog audio output on the external device might be labeled **AUDIO OUT**.
- 2 Press repeatedly **AUDIO IN** on the remote control of this product to enable the analog audio connection.
 - ↳ **AUX** is displayed on the display panel of this product.

Connect audio from other devices

You may also play audio from other devices through the speakers of this product.

Option 1: Connect to other device through optical cable

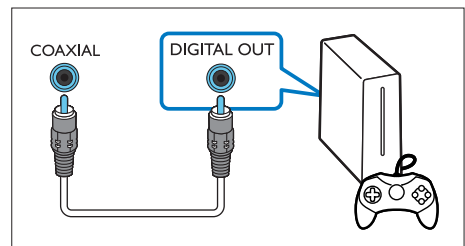
Best quality audio



- 1 Using an optical cable, connect the **OPTICAL** connector on this product to the optical output on the external device.
 - The digital optical output on the external device might be labeled **OPTICAL OUT**, **SPDIF** or **SPDIF OUT**.
- 2 Press **OPTICAL** on the remote control of this product to enable the optical connection.

Option 2: Connect to other device through coaxial cable

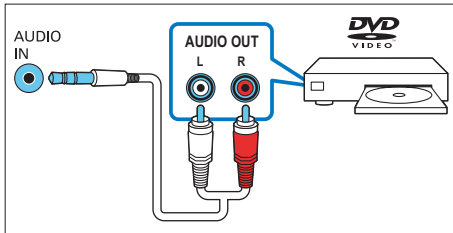
Best quality audio



- 1 Using a coaxial cable, connect the **COAXIAL** connector on this product to the coaxial output on the external device.
 - The digital coaxial output on the external device might be labeled **COAXIAL/DIGITAL OUT** or **DIGITAL AUDIO OUT**.
- 2 Press **COAX** on the remote control of this product to enable the coaxial connection.

Option 3: Connect to other device through analog audio cables

Basic quality audio



- 1 Using an analog cable, connect the **AUDIO IN** (3.5mm jack) on this product to the analog audio output (red and white) on the external device.
 - The analog audio output on the external device might be labeled **AUDIO OUT**.
- 2 Press **AUDIO IN** on the remote control of this product to enable the analog audio connection.
 - ↳ **AUX** is displayed on the display panel of this product.

Connect digital devices through HDMI

Connect a digital device such as a set-top box, DVD/Blu-ray player, or games console to this product through a single HDMI connection. When you connect the devices in this way and play a file or game, the

- video is automatically displayed on your TV, and
- audio is automatically played on this product.

- 1 Using a High Speed HDMI cable, connect the **HDMI OUT** connector on your digital device to the **HDMI IN 1/2** on this product.

- 2 Using a High Speed HDMI cable, connect the **HDMI OUT (ARC) - TO TV** connector on this product to the **HDMI** connector on the TV.
 - On your TV and the connected device, turn on HDMI-CEC controls (if available). For details, see the user manual of the TV and the device.
- 3 Press **HDMI 1/2** on the remote control of this product to enable the HDMI IN connection.
 - If the TV is not HDMI-CEC compliant, select the correct video input on your TV.

4 Spatial calibration

Spatial calibration is used to achieve the following convenience, and simultaneously optimizes surround sound experience for it.

- Have freedom to place the wireless surround speakers according to your need, and
- automatically balance the placement of the wireless surround speakers with respect to your seating position.

The spatial calibration involves two steps.

- **Step 1:** calibrate the listening zone
- **Step 2:** calibrate the surround speaker position

When to calibrate

- If you perform spatial calibration for the first time, perform **Step 1** and **Step 2** in sequence.
- If you re-design your seating position, perform **Step 1** and **Step 2** in sequence.
- If you re-locate the wireless surround speakers, perform **Step 2** independently (**Step 1** can be skipped).

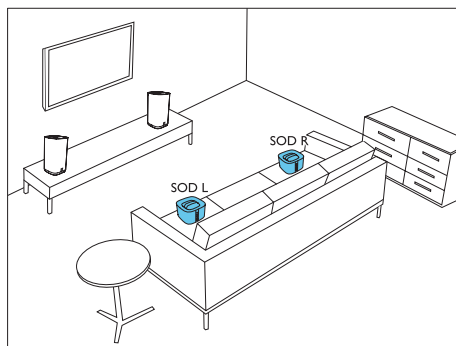
Before you start

- Make sure that the room is fairly quiet.
- Make sure that there is no obstacle between the left and right base speakers.
- Place the wireless surround speakers with the speaker side facing towards the main unit.
- Make sure that the main unit, the wireless surround speakers can fully "see" each other; no obstacle between them blocking such view.
- The minimum distance between the left and right base speakers is 0.8m (2.6'), the maximum distance 3m (10').
- The minimum distance between the wireless surround speakers and the main unit is 0.8m (2.6'), the maximum distance 6m (20').

Step 1: calibrate the listening zone

This step is to optimize surround experience through balance of your seating position.

- 1 Place the wireless surround speakers on two seating positions you prefer most (such as on a sofa).
 - Make sure that the wireless surround speakers are wirelessly connected to the main unit (press **SOD** on the wireless speaker).

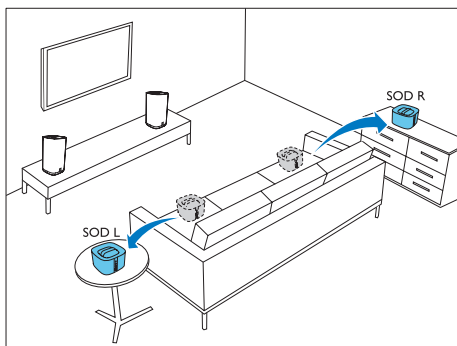


- 2 Press and hold **CALIBRATION** on the remote control for three seconds to trigger calibration.
 - ↳ **ZONE** (zone) is displayed on the display panel.
 - ↳ You can hear the calibration tones from the wireless surround speakers.
- 3 Wait until the calibration tones end.
 - ↳ **->SPEAKER** (speaker) is displayed on the display panel.
- 4 Then perform the following Step 2 (calibrate the surround speaker position) to complete and store the new settings.

Step 2: calibrate the surround speaker position

This step is to optimize surround experience through balance of the placement of wireless surround speakers.

- 1 Place the wireless surround speakers on the position you prefer.
 - Make sure that the wireless surround speakers are wirelessly connected to the main unit (press **SOD** on the wireless speaker).



- 2 Press **CALIBRATION** once to trigger calibration.
 - Press **CALIBRATION** three times to trigger calibration if you re-locate the wireless surround speakers and skip Step 1 (calibrate the listening zone) after you completed a round of spatial calibration previously.

↳ You can hear the calibration tones from the wireless surround speakers.
- 3 Wait until the calibration tones end.
 - ↳ If the calibration succeeds, **DONE** (done) is displayed on the display panel. And the new settings are stored.

Note

- Spatial calibration takes around three minutes.
- Surround sound improvement is only noticeable if the wireless surround speakers were improperly placed, or if there is strong surround effect in the music you play.
- If the wireless surround speakers are swapped in placement, at the end of calibration **L<->R** is displayed for few seconds, then the calibration completes.
- During calibration, you may press **CALIBRATION** to cancel calibration, and the settings returns to the default.
- If the spatial calibration fails, an error message is displayed on the display panel, such as **FAIL** (fail), and the settings returns to the default.
- If the spatial calibration fails, try the spatial calibration again, and make sure that the calibration points described at the beginning of this chapter are fully met.



5 Use your product

This section helps you use this product to play audio from connected devices.

Before you start

- Make the necessary connections described in the quick start guide and the user manual.
- Switch this product to the correct source for other devices.

Adjust the volume

- 1 Press **Volume +/-** to increase or decrease a volume level.
 - To mute sound, press .
 - To restore the sound, press  again or press **Volume +/-**.

For the wireless surround speakers only

- 1 When the wireless surround speakers are wirelessly connected to the main unit (in **SOD** mode), press **REAR VOL. +/-** to increase or decrease a volume level.

Choose your sound

This section helps you choose the ideal sound for your video or music.

Sound mode

Select predefined sound modes to suit your video or music.

- Press **MOVIE** to create a surround listening experience. Ideal for watching movie.
- Press **MUSIC** to create two-channel or multi-channel stereo. Ideal for listening to music.

- Press **VOICE** to create sound effect which makes human voice more clear and outstanding for listening.
- Press **SMART** to automatically select a predefined sound mode (**MOVIE**, **MUSIC** or **VOICE**) based on input audio content to optimize audio performance.

CLOSE TO ME (close to me)

For ultimate clear sound without disturbing your neighbors, place both the wireless surround speakers close to you, and activate this feature (to mute the main unit).



Note

- It is applicable only when the wireless surround speakers are wirelessly connected to the main unit (or **SOD** mode switches on).
- If **CLOSE TO ME** (close to me) is turned on, the functions for **MOVIE** and **MUSIC** buttons are disabled.

- 1 Press and hold **VOICE** for 3 seconds to activate the feature.
 - ↳ **CLOSE TO ME** (close to me) scrolls once on the display panel.
 - ↳ The main unit is muted.
- 2 To exit this sound mode, press and hold **VOICE** again for three second.
 - ↳ The previous sound mode switches in.

Equalizer

Change the high frequency (treble) and low frequency (bass) settings of this product.

- 1 Press **TREBLE +/-** or **BASS +/-** to change the frequency.

Synchronize video and sound

If the audio and video are not synchronized, delay the audio to match the video.

- 1 Press **AUDIO SYNC +/-** to synchronize the audio with the video.
 - **AUDIO SYNC +** increases the sound delay, and **AUDIO SYNC -** decreases the sound delay.

Auto volume

Turn the auto volume on to keep the volume constant when you switch to a different source. It also compresses the sound dynamics, increasing the volume for quiet scenes and decreasing the volume for loud scenes.

- 1 Press **AUTO VOL.** to turn auto volume on or off.
 - ↳ When auto volume is turned on, **ON AUTO VOLUME** scrolls once on the display panel.
 - ↳ When auto volume is turned off, **OFF AUTO VOLUME** scrolls once on the display panel.

Night mode

For quiet listening, night mode decreases the volume of loud sounds when audio is played. Night mode is only available for Dolby Digital soundtracks.

- 1 Press **NIGHT** to turn night mode on or off.
 - ↳ When night mode is turned on, **ON NIGHT** is displayed briefly on the display panel.
 - ↳ When night mode is turned off, **OFF NIGHT** is displayed briefly on the display panel.



Note

- If auto volume is set to turned on, you cannot enable the night mode.

MP3 player

Connect your MP3 player to play your audio files or music.

What you need

- An MP3 player.
- A 3.5mm stereo audio cable.

- 1 Using the 3.5mm stereo audio cable, connect the MP3 player to the **AUDIO IN** connector on the right base speaker.
- 2 Press **AUDIO IN** repeatedly.
 - ↳ **AUDIO IN** is displayed on the display panel.
- 3 Press the buttons on the MP3 player to select and play audio files or music.
 - On the MP3 player, it is recommended to set the volume in the range of 80% maximum volume.

USB storage devices

Enjoy audio on a USB storage device, such as an MP3 player and USB flash memory, etc.

What you need

- A USB storage device that is formatted for FAT or NTFS file systems, and complies with the Mass Storage Class.

- 1 Connect a USB storage device to this product.
- 2 Press **USB** on the remote control.
- 3 Use the remote control to control play.
 - Press **▶||** to start, pause or resume play.
 - Press **◀/▶** to skip to the previous or next track.
 - During USB play, press **USB** to select one of the following play modes.
 - **RPT TRACK**: repeat the current track.
 - **RPT ALL**: repeat all the tracks in one folder.

- **SHUFFLE:** play randomly in one folder.
- **RPT OFF:** exit repeat or shuffle play mode.



Note

- This product may not be compatible with certain types of USB storage device.
- If you use a USB extension cable, USB HUB, or USB multi-reader; the USB storage device may not be recognized.
- Digital camera PTP and MTP protocols are not supported.
- Do not remove the USB storage device while it is being read.
- DRM-protected music files (MP3) are not supported.
- Support a USB port: 5V ---, 1A.

Play music via Bluetooth

Through Bluetooth, connect your product with a Bluetooth device (such as an iPad, iPhone, iPod touch, Android phone, or laptop), and then you can listen to the audio files stored on the device through the speakers of this product.

What you need

- A Bluetooth device which supports Bluetooth profile A2DP, AVRCP and with Bluetooth version as 4.1
- The operational range between the main unit (left and right base speakers) and a Bluetooth device is approximately 10 meters (30 feet).



Note

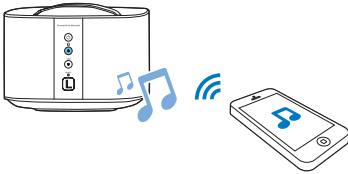
- The music streaming may be interrupted by obstacles between the device and this product, such as wall, metallic casing that covers the device, or other devices nearby that operate in the same frequency.
- If you want to connect this product with another Bluetooth device, break the current Bluetooth connection.

Bluetooth on the main unit

- 1 Press **0** on the remote control to switch the main unit to Bluetooth mode.
↳ **BT** on the display blinks.
- 2 On the Bluetooth device, switch on Bluetooth, search for and select **Philips E6** to start connection (see the user manual of the Bluetooth device on how to enable Bluetooth).
↳ During connection, **BT** on the display panel blinks.
- 3 Wait until **BT** on the display lights up.
↳ If the connection succeeds, **BT** on the display panel lights up.
↳ If the connection fails, **BT** on the display panel blinks.
- 4 Select and play audio files or music on your Bluetooth device.
 - During play, if a call is coming, music play is paused (this feature is dependent on the connected mobile phone).
 - If your Bluetooth device supports AVRCP profile, on the remote control you can press **◀/▶** to skip to a track, or press **⏸** to pause/resume play.
 - If music streaming is interrupted, place the Bluetooth device closer to the main unit.
- 5 To exit Bluetooth, select other source.
↳ When you switch back to Bluetooth mode, Bluetooth connection resumes.
 - To break the current Bluetooth connection, press and hold **0** on the remote control.

Bluetooth on a single surround speaker

You can use the left or right surround speaker as a standalone Bluetooth speaker; independently from the main unit.



- 1 Press the **B** button on the left or right surround speaker to switch to Bluetooth mode.
 - ↳ The **B** LED on the left or right surround speaker blinks.
- 2 On the Bluetooth device, switch on Bluetooth, search for and select the name of the left or right surround speaker to start connection (see the user manual of the Bluetooth device on how to enable Bluetooth).
 - **Philips E6 -L** stands for the left surround speaker; **Philips E6 -R** for the right surround speaker.
 - ↳ During connection, the **B** LED on the left or right surround speaker blinks.
- 3 Wait until the **B** LED on the surround speaker lights up.
 - ↳ If the connection succeeds, connection tone is heard, and the **B** LED on the surround speaker lights up.
 - ↳ If the connection fails, the **B** LED on the surround speaker blinks.
- 4 Select and play audio files or music on your Bluetooth device.
 - During play, if a call is coming, music play is paused (this feature is dependent on the connected mobile phone).

- If music streaming is interrupted, place the Bluetooth device closer to the surround speaker.

- 5 To exit Bluetooth, press the **SOD** button on the surround speaker.
 - ↳ Then the surround speaker is wirelessly re-connected to the main unit.
 - ↳ When you switch back to Bluetooth mode, Bluetooth connection resumes.
- To break the current Bluetooth connection, press and hold the **B** button on the surround speaker.

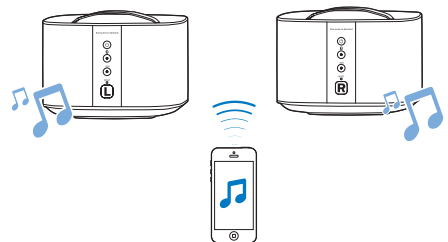
Note

- The function of the remote control is not available to this feature.

Stereo Bluetooth on wireless speakers

You can also pair up the left and right surround speakers with each other as a whole for Bluetooth to create stereo effect, independently from the main unit.

The left surround speaker functions as the master speaker; and the right surround speaker as the slave speaker.



- 1 Press the **B** buttons on the left and right surround speaker to switch both speakers to Bluetooth mode.
 - Make sure that both surround speakers are turned on.

- Make sure that the right surround speaker is not currently connected with other Bluetooth device.
 - ↳ The **BT** LEDs on the left and right surround speakers blink.
- 2** Press the **BT** buttons on the left and right surround speakers to initialize pair-up.
- ↳ The **BT** LED on the left surround speaker blinks, and the **BT** LED on the right surround speaker lights up, indicating that the right surround speaker is connected to the left surround speaker.
- 3** On the Bluetooth device, switch on Bluetooth, search for and select **Philips E6 L** to connect the left surround speaker to the Bluetooth device (see the user manual of the Bluetooth device on how to enable Bluetooth).
- ↳ During connection between the left surround speaker and the Bluetooth device, the **BT** LED on the left surround speaker still blinks.
- 4** Wait until the **BT** LED on the left surround speaker lights up.
- ↳ If the connection between the left surround speaker and the Bluetooth device succeeds, the **BT** LED on the left surround speaker lights up.
 - ↳ If the connection between the left surround speaker and the Bluetooth device fails, the **BT** LED on the left surround speaker still blinks.
- 5** Select and play audio files or music on your Bluetooth device.
- During play, if a call is coming, music play is paused (this feature is dependent on the connected mobile phone).
 - If music streaming is interrupted, place the Bluetooth device closer to the left surround speaker.

- 6** To break pair-up of the right surround speaker from the left surround speaker, press the **SOD** on the right surround speaker.

Or, to exit Bluetooth mode or stop Bluetooth play, press the **SOD** on the left surround speaker.

- Press and hold **BT** on the left surround speaker to break the Bluetooth connection.

Note

- The function of the remote control is not available to this feature.

Connect Bluetooth via NFC

NFC (Near Field Communication) is a technology that enables short-range wireless communication between NFC-enabled devices, such as mobile phones.

What you need

- A Bluetooth device with NFC function.
- For pairing, tap the NFC device on the **NFC** tag of the right base speaker.

Note

- NFC feature is only available to the main unit, not available to the left and right surround speakers.

- 1** Enable NFC on the Bluetooth device (see the device's user manual for details).
- 2** Tap the NFC device on the **NFC** tag of this product until you hear a beep sound from this product.
- Make sure that this product is switched on from standby, and is currently disconnected from other Bluetooth device.
- ↳ The **BT** on the display panel lights up, and the NFC device is connected to this product via Bluetooth.

- ↳ If the connection fails, the **BT** on the display panel blinks.

- 3** Select and play audio files or music on your **NFC** device.
- To break the connection, tap again the **NFC** device with the **NFC** tag on this product.

Auto standby

When playing media from a connected device, this product automatically switches to standby after 15 minutes of button inactivity and no audio/video play from a connected device.

Set display brightness

You can press **DIM** repeatedly to select a different brightness level of the display panel on this product.

If you select **DIM 0**, LED message is switched off after 10 seconds of button inactivity.

Apply factory settings

In case of no response from this product, you may reset this product to the default settings programmed at the factory.

- 1** On the right base speaker and the wireless surround speakers respectively, press and hold **RESET** with a pin for 5 seconds to reset this product.
- ↳ When the factory settings restore is complete, the product automatically switches off and restarts.

6 Update software


To get the best features and support, update your product with the latest software.

Check software version

In **HDMI ARC** mode (press **HDMI ARC**), within six seconds, on the remote control, press **❖** twice then **TREBLE -** once, and then hold down **BASS -**.

- ↳ The software version number is displayed on the display panel.

Update software via USB

- 1** Check the latest software version on www.philips.com/support.
 - Search for your model and click on "Software and drivers".
- 2** Download the software into a USB storage device.
 - ①** Unzip the downloaded file, and make sure that the unzipped folder is named "UPG".
 - ②** Put the "UPG" folder in the root directory.
- 3** Connect the USB storage device to the  (USB) connector on this product.
- 4** Press **HDMI ARC** to switch this product to the **HDMI ARC** source.
- 5** On the remote control, within six seconds press **❖** twice then **Volume +** once, and then hold down **MOVIE**.

↳ During upgrade, "UPG XX" (upgrade) is displayed on the display panel, and "XX" indicates a percentage of upgrade completion.

- ➔ If the update is complete, this product automatically turns off and on again.
- ➔ If the update fails, "ERROR" (error) is displayed on the display panel, then this product automatically turns off and on again, and prompts you to re-trigger the upgrade.



Caution

- Do not turn off the power or remove the USB storage device when the software update is in progress because you might damage this product.

7 Product specifications



Note

- Specifications and design are subject to change without notice.

Amplifier

- Total output power:
192W RMS (+/- 0.5 dB, 10% THD)
- Frequency response: 20 Hz-20 kHz / ± 3 dB
- Signal-to-noise ratio:
> 65 dB (CCIR) / (A-weighted)
- Input sensitivity:
 - AUDIO IN: 500 mV
 - AUX: 1000 mV

Audio

- S/PDIF Digital audio input:
 - Coaxial: IEC 60958-3
 - Optical: TOSLINK

USB

- Compatibility: Hi-Speed USB (2.0)
- Class support: USB Mass Storage Class (MSC)
- File system: FAT16, FAT32, NTFS
- Playable audio files: .aac, .mka, .mp3, .wav, .m4a, .flac, .ogg, .ape, .dsf, .dff

Bluetooth

- Bluetooth profiles: A2DP, AVRCP,
- Bluetooth version: V4.1

Main unit (left and right base speakers)

- Power supply: 110-240 V~, 50-60 Hz
- Power consumption: 70 W
- Standby power consumption: ≤ 0.5 W
- Dimensions (W x H x D):
161 x 302 x 161 mm
- Weight: 2.4 kg/each
- **Built-in speakers**
 - Left/Right channel:
2 x woofer (76.2 mm/3", 8 ohm) +
2 x tweeter (25.4 mm/1", 8 ohm)
 - Center channel: 2 x full-range
(76.2 mm/3", 8 ohm)

Surround speakers

- Speaker impedance: 8 ohm
- Speaker drivers: 2 x 63.5 mm (2.5")
full range
- Dimensions (W x H x D):
161 x 111 x 161 mm
- Weight: 1.0 kg/each

Subwoofer

- Power supply: 110-240 V~, 50-60 Hz
- Power consumption: 30 W
- Standby power consumption: ≤ 0.5 W
- Impedance: 4 ohm
- Speaker drivers: 1 x 165 mm (6.5") woofer
- Dimensions (W x H x D):
222 x 441 x 222 mm
- Weight: 5.4 kg

Remote control batteries

- 2 x AAA-R03-1.5 V

8 Troubleshooting



Warning

- Risk of electric shock. Never remove the casing of the product.

To keep the warranty valid, never try to repair the product yourself.

If you have problems using this product, check the following points before you request service. If you still have a problem, get support at www.philips.com/support.

Main unit

The buttons on this product do not work.

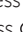
- Disconnect this product from the power supply for a few minutes, then reconnect.

Sound

No sound from the speakers of this product.

- Connect the audio cable from this product to your TV or other devices. However, you do not need a separate audio connection when:
 - this product and TV are connected through **HDMI ARC** connection, or
 - a device is connected to the **HDMI IN** connector on this product.
- Make sure that you connect the audio input on this product to the audio output on your TV or other devices.
- Reset this product to its factory settings.
- On the remote control, select the correct audio input.
- Make sure that this product is not muted.

No sound from the wireless surround speakers.

- Make sure that the wireless surround speaker is turned on. Press  on the wireless surround speaker.
- Dock the wireless surround speakers onto the main unit to charge the battery.

- If you intend the wireless surround speaker to wirelessly connect to the main unit, make sure that you press the **SOD** button on the wireless surround speaker.
- If you intend the surround speaker to be a standalone Bluetooth speaker, make sure that you connect the surround speaker to a Bluetooth device.

Audio from the main unit cannot be heard through the subwoofer and the wireless surround speakers.

- Manually pair up the subwoofer with the main unit.
- Re-dock the wireless surround speakers onto the main unit to pair up the surround speakers with the main unit.

Distorted sound or echo.

- If you play audio from the TV through this product, make sure that the TV is muted.

Audio and video are not synchronized.

- Press **AUDIO SYNC +/-** to synchronize the audio with the video.

Bluetooth

A device cannot connect with this product.

- The device does not support the compatible profiles required for this product.
- You have not enabled the Bluetooth function of the device. See the user manual of the device on how to enable the function.
- The device is not correctly connected. Connect the device correctly.
- This product is already connected with another Bluetooth device. Disconnect the connected device, then try again.

Quality of audio play from a connected Bluetooth device is poor.

- The Bluetooth reception is poor. Move the device closer to this product, or remove any obstacle between the device and this product.

The connected Bluetooth device connects and disconnects constantly.

- The Bluetooth reception is poor. Move the device closer to this product, or remove any obstacle between the device and this product.
- Turn off Wi-Fi function on the Bluetooth device to avoid interference.
- For some Bluetooth, the Bluetooth connection can be deactivated automatically to save power. This does not indicate any malfunction of this product.

NFC

A device cannot connect with this product via NFC.

- Make sure that the device is supported by NFC.
- Make sure that NFC is enabled on the device (see the device's user manual for details).
- For pairing, tap the NFC device on the **NFC** tag of this product.

Spatial calibration

Why spatial calibration is needed?

- Spatial calibration optimizes surround sound experience if your portable left and right speakers (surround) are not properly placed.

Improvement in surround sound is not noticeable after successful spatial calibration.

- Surround sound improvement is only noticeable if the portable left and right speakers (surround) were improperly placed, or if there is strong surround effect in the music you play.

Error message is displayed on the display panel.

- If spatial calibration fails, one of the following error message is displayed. Refer to the fourth chapter (Spatial calibration) for details to re-calibrate.

- **FAIL** (fail): indicates that the portable left/right speaker is not in **SOD** mode or out of calibration range, or there is some obstacle by which the main unit, the portable left and right speakers cannot completely “see” each other.
- **BATT LOW** (battery low): indicates that the portable left/right speaker has low battery.
- **ERROR** (error): indicates that the portable left and right speakers are not detached from the main unit.



Manufactured under license from Dolby Laboratories. Dolby, Pro Logic, and the double-D symbol are trademarks of Dolby Laboratories.



For DTS patents, see <http://patents.dts.com>.
Manufactured under license from DTS Licensing Limited. DTS, the Symbol, & DTS and the Symbol together are registered trademarks, and DTS Digital Surround is a trademark of DTS, Inc. © DTS, Inc. All Rights Reserved.



The terms HDMI and HDMI High-Definition Multimedia Interface, and the HDMI Logo are trademarks or registered trademarks of HDMI Licensing LLC in the United States and other countries.



The Bluetooth® word mark and logos are registered trademarks owned by Bluetooth SIG, Inc. and any use of such marks by Gibson Innovations Limited is under license. Other trademarks and trade names are those of their respective owners.



The N Mark is a trademark or registered trademark of NFC Forum, Inc. in the United States and in other countries.



Specifications are subject to change without notice

2016 © Gibson Innovations Limited. All rights reserved.

This product has been manufactured by, and is sold under the responsibility of WOOX Innovations (Shanghai) Commercial Company Ltd., and WOOX Innovations (Shanghai) Commercial Company Ltd., is the warrantor in relation to this product.

Philips and the Philips Shield Emblem are registered trademarks of Koninklijke Philips N.V. and are used under license.

