

Always there to help you
Register your product and get support at
www.philips.com/support



Short User Manual

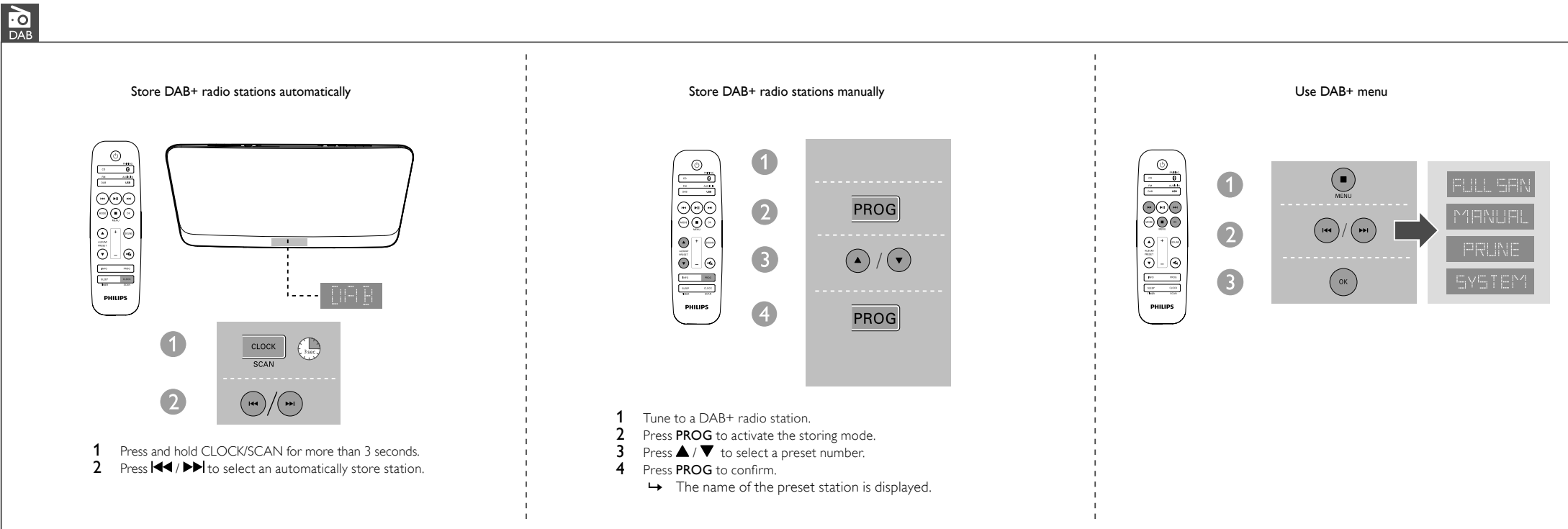
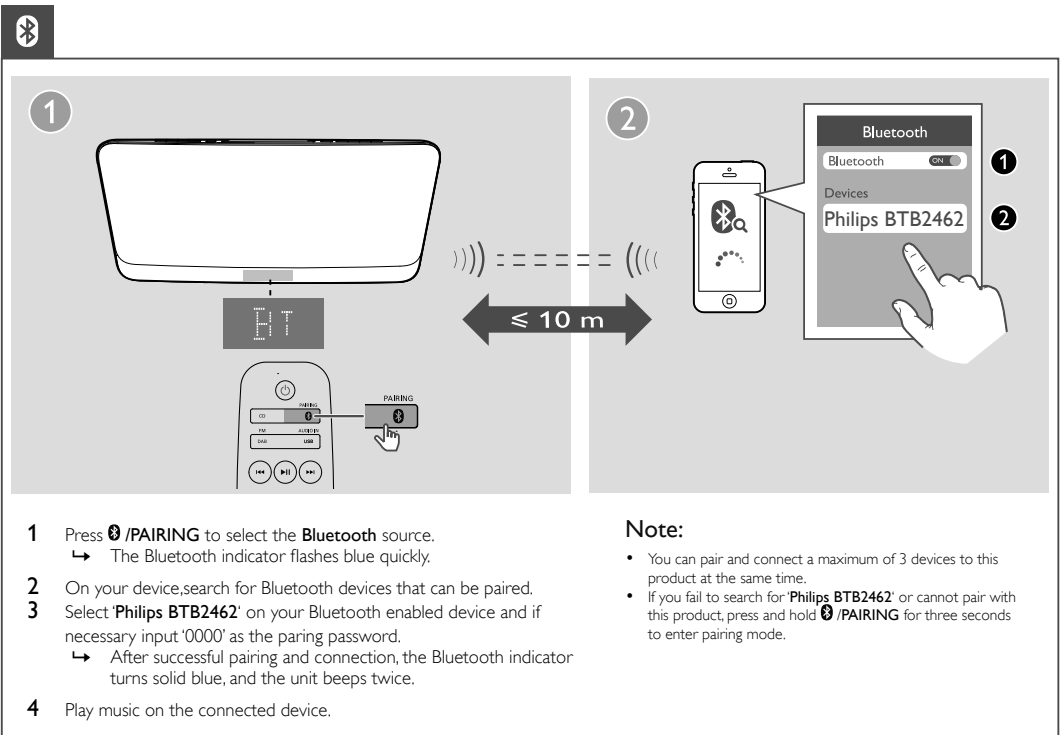
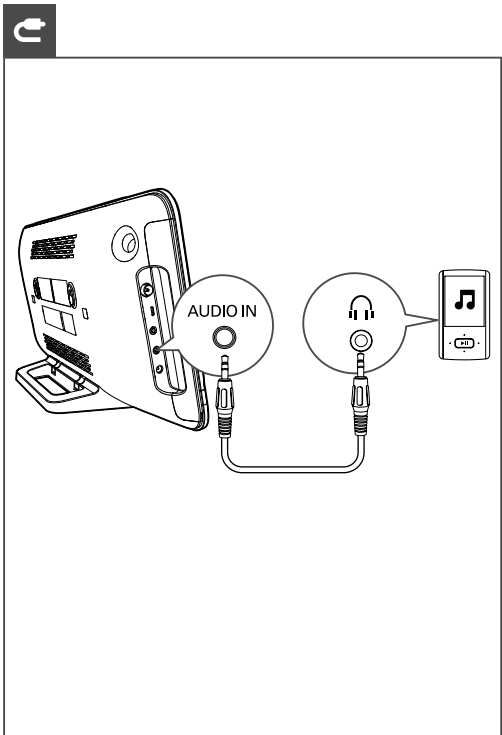
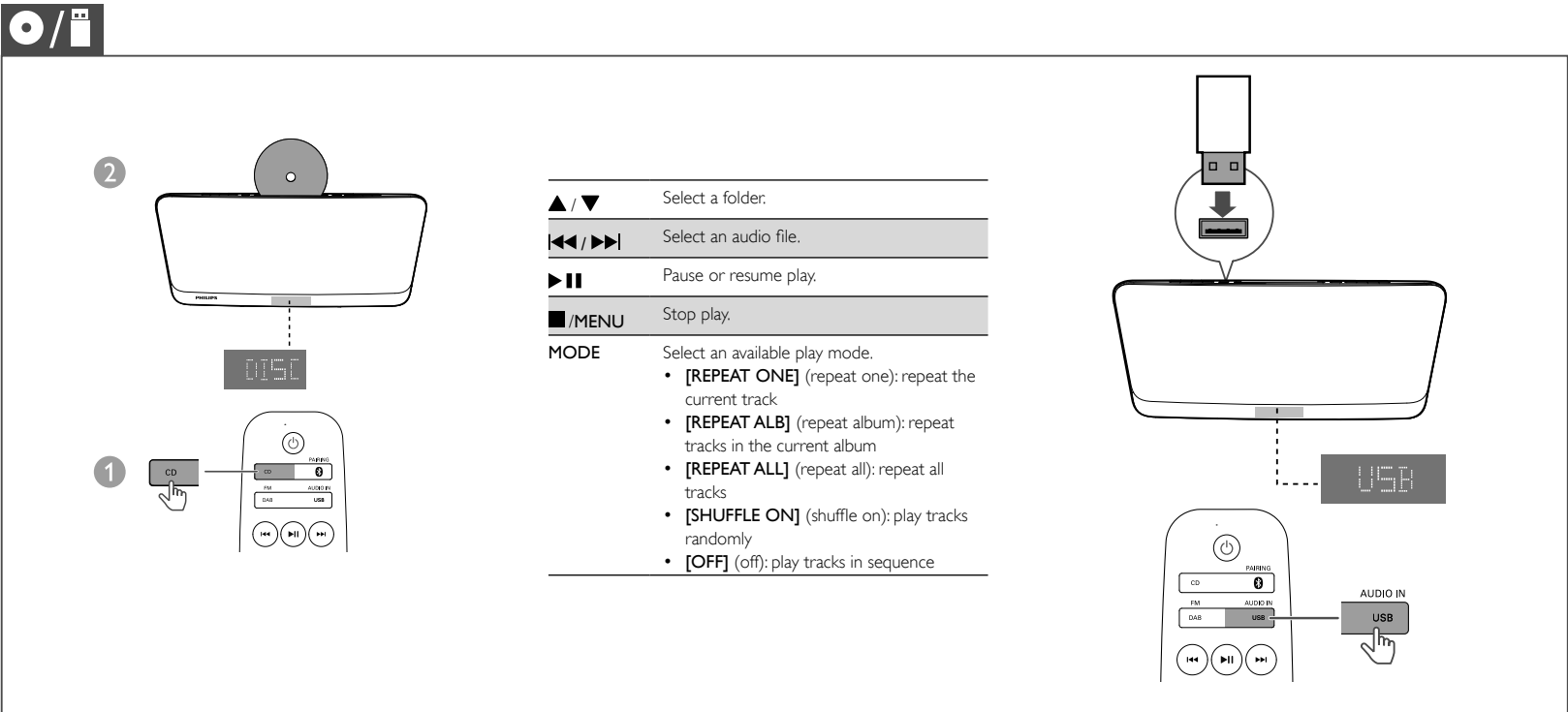
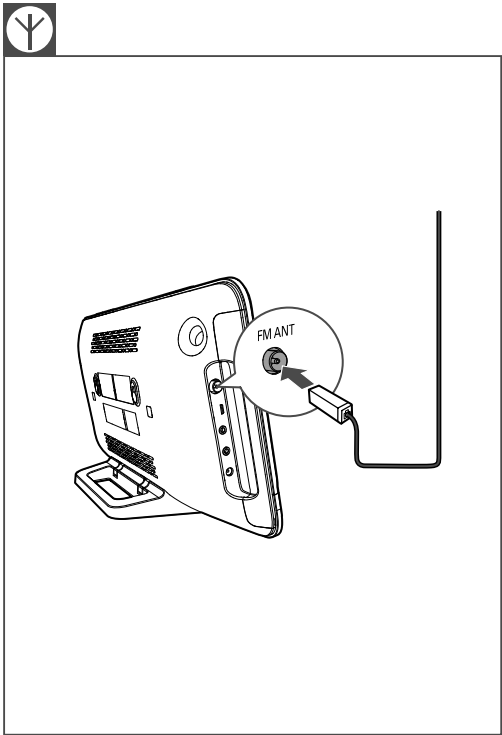
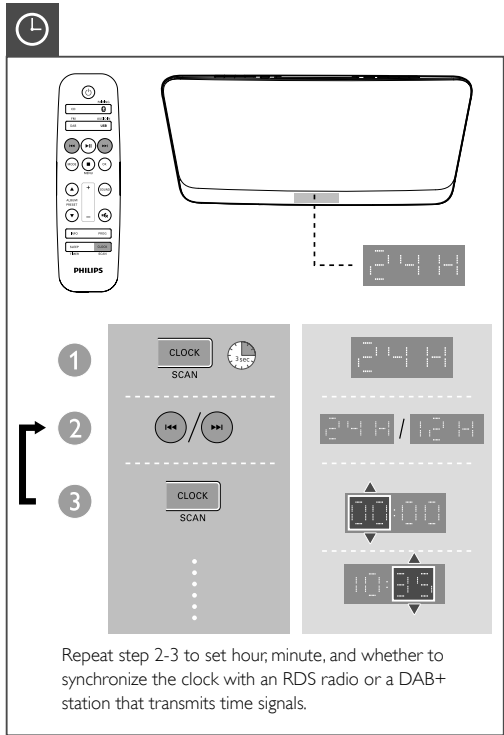
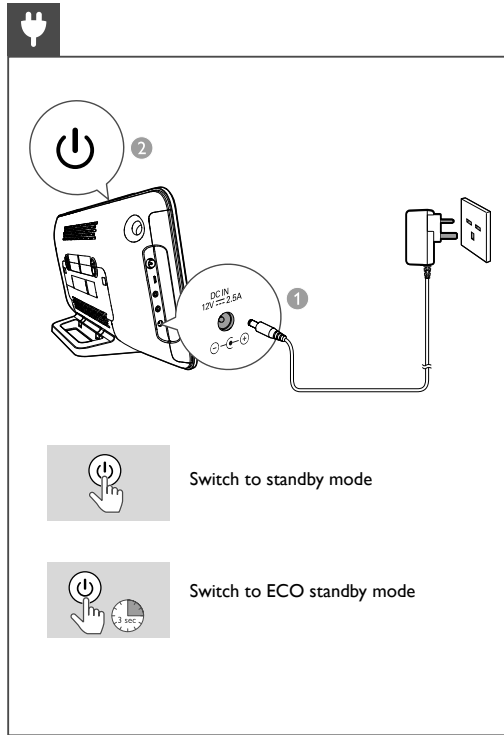
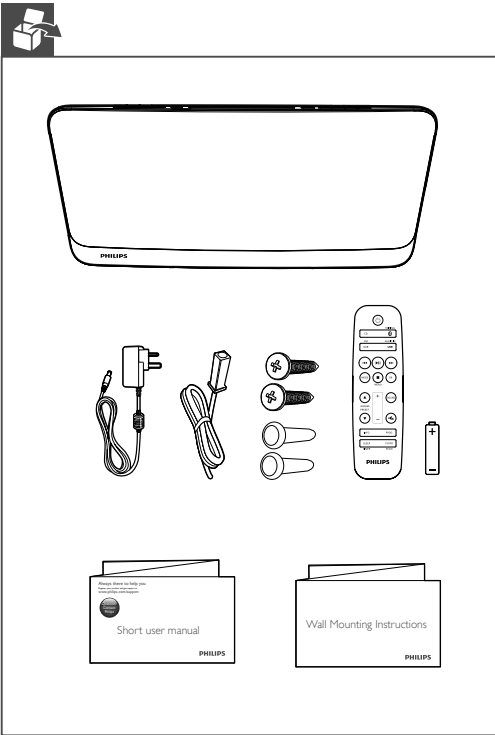
PHILIPS

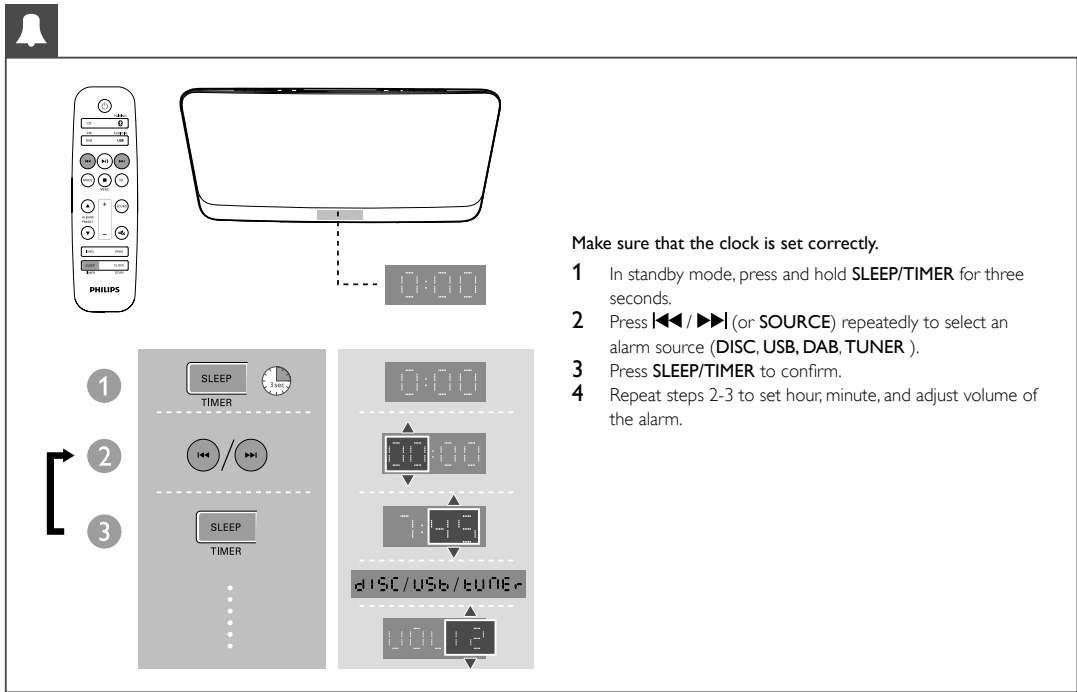
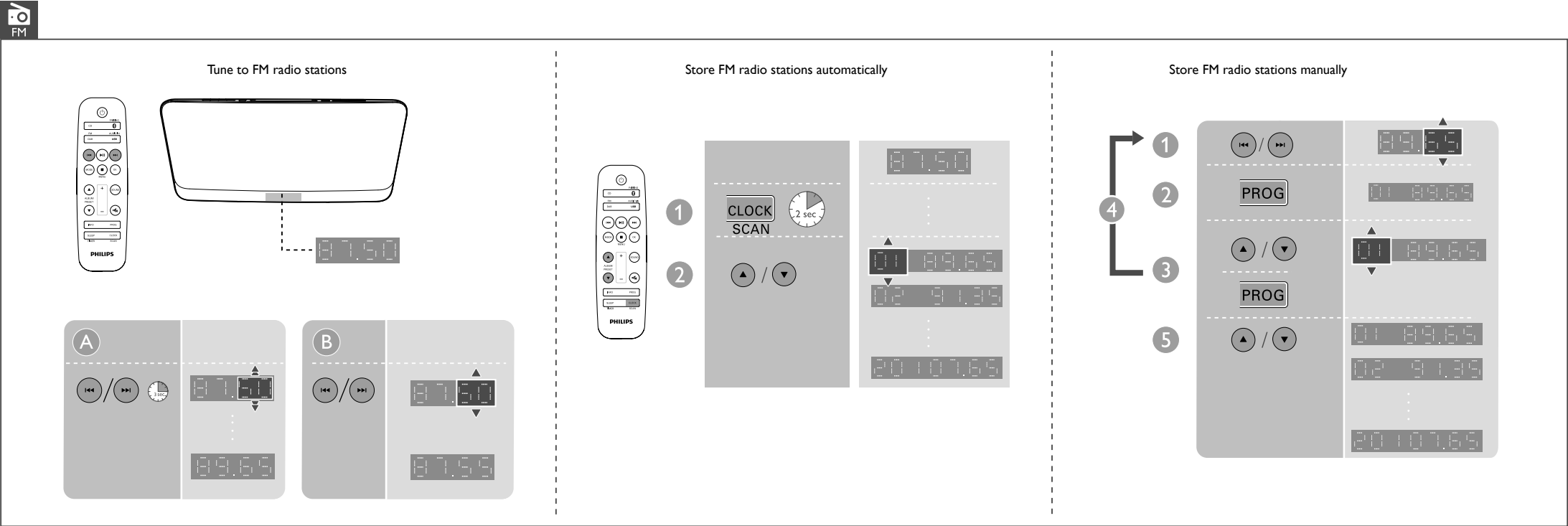
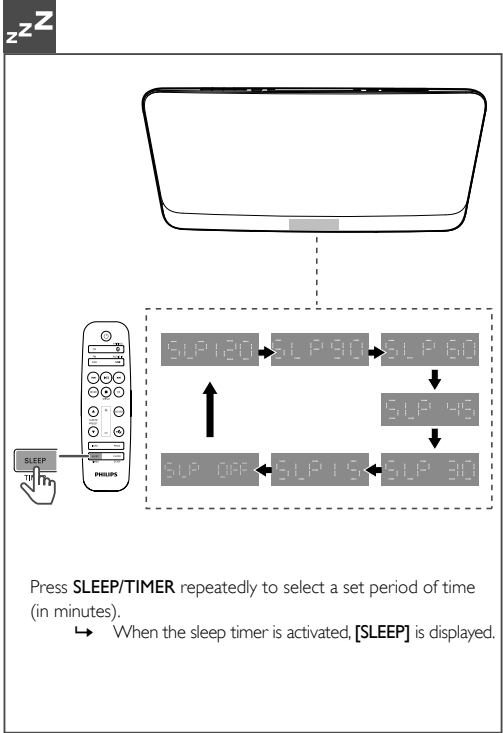
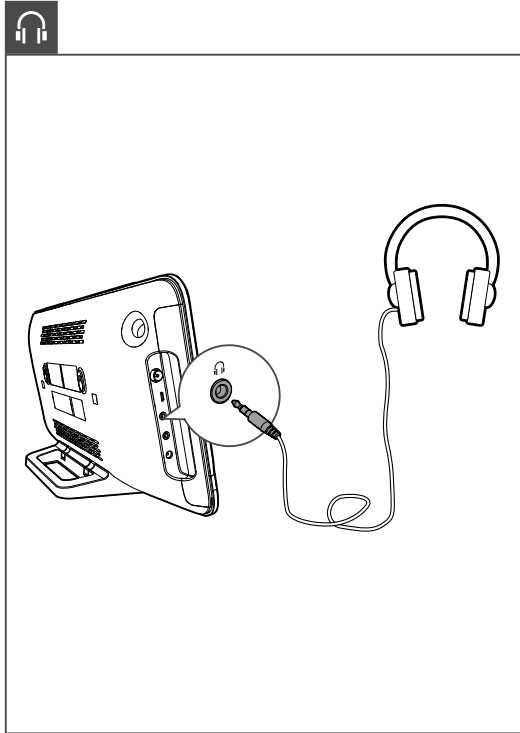


2015 © Gibson Innovations Limited. All rights reserved.
This product has been manufactured by, and is sold under the responsibility of
Gibson Innovations Ltd., and Gibson Innovations Ltd. is the warrantor in relation
to this product.
Philips and the Philips Shield Emblem are registered trademarks of Koninklijke
Philips N.V. and are used under license from Koninklijke Philips N.V.
BTB2462_05_Short User Manual_V1.0



BTB2462

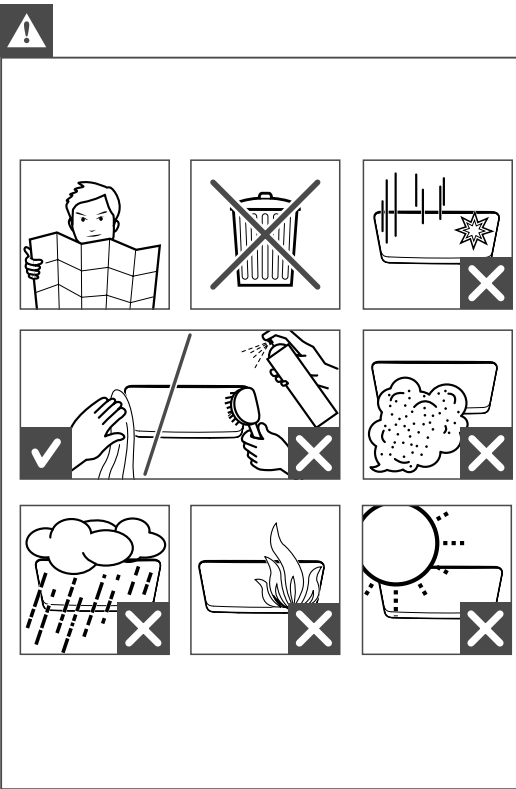
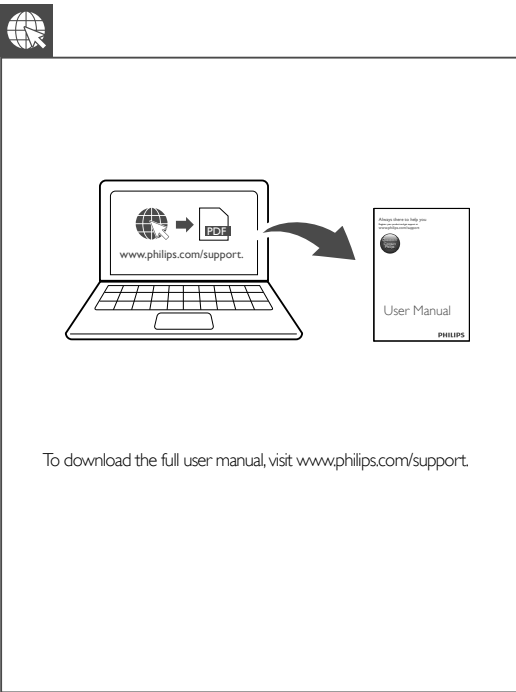




Specifications

Amplifier	
Rated Output Power	2 x 5 W
Frequency Response	63 -20KHz, ±3dB
Total Harmonic Distortion	<1%(1 KHz)
Signal to Noise Ratio (A-weighted)	>72dBA
AUDIO IN	650mV RMS 22kohm
Disc	
Laser Type	Semiconductor
Disc Diameter	12 cm
Support Disc	CD-DA, CD-R, CD-RW, MP3-CD
Audio DAC	
Audio DAC	24 Bits/44.1 kHz
Total Harmonic Distortion	<1% (1 kHz)
Frequency Response	63Hz - 20kHz, ±3dB
S/N Ratio	>72dBA
Bluetooth	
Bluetooth version	V3.0 +EDR
Bluetooth frequency band	2.4GHz ~ 2.48GHz ISM Band
Range	10 m (free space)
USB	
USB Direct Version	2.0 full speed

Tuner (FM)	
Tuning Range	87.5-108 MHz
Tuning grid	50 KHz
Sensitivity	- Mono, 26 dB S/N Ratio <22 dBf - Stereo, 46 dB S/N Ratio <43 dBf
Search Selectivity	<28dBf
Total Harmonic Distortion	<3%
Signal to Noise Ratio	>55dBA
DAB	
DAB Range	174.928MHz - 239.200MHz
General information	
AC power	MODEL: GT-WA-HU12000250-002/ AS360-120-A250 Input: 100-240V~, 50-60 Hz Output: DC 12V, 2500 mA
Operation Power Consumption	15W
Eco Standby Power Consumption	0.5W
Dimensions	
- Main Unit (W x H x D)	465 x 233 x 107 mm
Weight	
- Main Unit	2.4 kg



1 Important

Safety

- Make sure that there is enough free space around the product for ventilation.
- Only use attachments or accessories specified by the manufacturer.
- Battery usage CAUTION –To prevent battery leakage which may result in bodily injury, property damage, or damage to the product:
 - Install the batteries correctly, + and - as marked on the product.
 - Do not mix batteries (old and new or carbon and alkaline, etc.).
 - Remove the batteries when the product is not used for a long time.
 - The batteries shall not be exposed to excessive heat such as sunshine, fire or the like.
- Use only power supplies listed in the user manual.
- The product shall not be exposed to dripping or splashing.
- Do not place any sources of danger on the product (e.g. liquid filled objects, lighted candles).
- Where the mains plug or an appliance coupler is used as the disconnect device, the disconnect device shall remain readily operable.

Warning

- Never remove the casing of this device.
- Never lubricate any part of this device.
- Never place this device on other electrical equipment.
- Keep this device away from direct sunlight, naked flames or heat.
- Never look into the laser beam inside this device.
- Ensure that you always have easy access to the power cord, plug, or adaptor to disconnect this device from the power.

Hearing safety

A pleine puissance, l'écoute prolongée du baladeur peut endommager l'oreille de l'utilisateur. Listen at a moderate volume.

- Using headphones at a high volume can impair your hearing. This product can produce sounds in decibel ranges that may cause hearing loss for a normal person, even for exposure less than a minute. The higher decibel ranges are offered for those that may have already experienced some hearing loss.
- Sound can be deceiving. Over time your hearing 'comfort level' adapts to higher volumes of sound. So after prolonged listening, what sounds 'normal' can actually be loud and harmful to your hearing. To guard against this, set your volume to a safe level before your hearing adapts and leave it there.

To establish a safe volume level:

- Set your volume control at a low setting.
- Slowly increase the sound until you can hear it comfortably and clearly, without distortion.

Listen for reasonable periods of time:

- Prolonged exposure to sound, even at normally 'safe' levels, can also cause hearing loss.
- Be sure to use your equipment reasonably and take appropriate breaks.

Be sure to observe the following guidelines when using your headphones.

- Listen at reasonable volumes for reasonable periods of time.
- Be careful not to adjust the volume as your hearing adapts.
- Do not turn up the volume so high that you can't hear what's around you.
- You should use caution or temporarily discontinue use in potentially hazardous situations.

2 Notice

Any changes or modifications made to this device that are not expressly approved by Gibson Innovations may void the user's authority to operate the equipment.

Declaration of conformity

Hereby, Gibson Innovations declares that this product is in compliance with the essential requirements and other relevant provisions of Directive 1999/5/EC. You can find the Declaration of Conformity on www.p4c.philips.com.

Disposal of your old product and battery

Your product is designed and manufactured with high quality materials and components, which can be recycled and reused.

This symbol on a product means that the product is covered by European Directive 2012/19/EU.

This symbol means that the product contains batteries covered by European Directive 2013/56/EU which cannot be disposed of with normal household waste. Inform yourself about the local separate collection system for electrical and electronic products and batteries. Follow local rules and never dispose of the product and batteries with normal household waste. Correct disposal of old products and batteries helps prevent negative consequences for the environment and human health.

Removing the disposable batteries

To remove the disposable batteries, see battery installation section.

Environmental information

All unnecessary packaging has been omitted. We have tried to make the packaging easy to separate into three materials: cardboard (box), polystyrene foam (buffer) and polyethylene (bags, protective foam sheet.)

Your system consists of materials which can be recycled and reused if disassembled by a specialized company. Please observe the local regulations regarding the disposal of packaging materials, exhausted batteries and old equipment.

Important notes for users in the U.K.

Mains plug

This apparatus is fitted with an approved 13 Amp plug. To change a fuse in this type of plug proceed as follows:

- Remove fuse cover and fuse.
- Fix new fuse which should be a BS1362 3 Amp, A.S.T.A. or BSI approved type.
- Refit the fuse cover.

If the fitted plug is not suitable for your socket outlets, it should be cut off and an appropriate plug fitted in its place.

If the mains plug contains a fuse, this should have a value of 3 Amp. If a plug without a fuse is used, the fuse at the distribution board should not be greater than 3 Amp.

Note: The severed plug must be disposed off to avoid a possible shock hazard should it be inserted into a 13 Amp socket elsewhere.

How to connect a plug

The wires in the mains lead are coloured with the following code: blue = neutral (N), brown = live (L).

As these colours may not correspond with the colour markings identifying the terminals in your plug, proceed as follows:

- Connect the blue wire to the terminal marked N or coloured black.
- Connect the brown wire to the terminal marked L or coloured red.
- Do not connect either wire to the earth terminal in the plug, marked E (or e) or coloured green (or green and yellow).

Before replacing the plug cover, make certain that the cord grip is clamped over the sheath of the lead - not simply over the two wires.

Copyright in the U.K.

Recording and playback of material may require consent see Copyright Act 1956 and The performer's Protection Acts 1958 to 1972.

**Be responsible
Respect copyrights**

This item incorporates copy protection technology that is protected by U.S. patents and other intellectual property rights of Rovi Corporation. Reverse engineering and disassembly are prohibited.

Bluetooth

The Bluetooth® word mark and logos are registered trademarks owned by Bluetooth SIG, Inc. and any use of such marks by Gibson is under license. Other trademarks and trade names are those of their respective owners.

This apparatus includes this label:

**CLASS 1
LASER PRODUCT**

Note

- The type plate is located on the back of the device.