

Always there to help you

Register your product and get support at
www.philips.com/support



SB365



User manual

PHILIPS

Contents

1	Important	2
	Safety	2

2	Your Bluetooth speaker	3
	Introduction	3
	What's in the box	3
	Overview of the speaker	4

3	Get started	5
	Power supply	5
	Turn on	5

4	Play from Bluetooth-enabled devices	6
	Connect a device	6
	Play from Bluetooth device	7
	Clear the pairing information	7

5	Other features	7
	Charge your mobile devices	7
	Listen to an external device	7
	Adjust volume	8

6	Product information	8
	Specifications	8

7	Troubleshooting	9
	General	9
	About Bluetooth device	10

8	Notice	10
	Disposal of your old product and batteries	11

1 Important

Safety



Warning

- Never remove the casing of this speaker.
- Never lubricate any part of this speaker.
- Never place this speaker on other electrical equipment.
- Keep this speaker away from direct sunlight, naked flames or heat.

Important safety instructions

- ① Read these instructions.
- ② Keep these instructions.
- ③ Heed all warnings.
- ④ Follow all instructions.
- ⑤ Do not use this apparatus near water.
- ⑥ Clean only with dry cloth.
- ⑦ Do not block any ventilation openings. Install in accordance with the manufacturer's instructions.
- ⑧ Do not install near any heat sources such as radiators, heat registers, stoves, or other apparatus (including amplifiers) that produce heat.
- ⑨ Protect the power cord from being walked on or pinched, particularly at plugs, convenience receptacles, and the point where they exit from the apparatus.
- ⑩ Only use attachments/accessories specified by the manufacturer.
- ⑪ Unplug this apparatus during lightning storms or when unused for long periods of time.
- ⑫ Refer all servicing to qualified service personnel. Servicing is required when the apparatus has been damaged in any way, such as liquid has been spilled or objects have fallen into the apparatus, the apparatus has been exposed to rain or moisture, does not operate normally, or has been dropped.
- ⑬ **Battery usage CAUTION** – To prevent battery leakage which may result in bodily injury, property damage, or damage to the unit:
 - Install all batteries correctly, + and - as marked on the unit.
 - Do not mix batteries (old and new or carbon and alkaline, etc.).
 - Remove batteries when the unit is not used for a long time.
- ⑭ Battery shall not be exposed to excessive heat such as sunshine, fire or the like.
- ⑮ Apparatus shall not be exposed to dripping or splashing.
- ⑯ Do not place any sources of danger on the apparatus (e.g. liquid filled objects, lighted candles).
- ⑰ Where the plug of the Direct Plug-in Adapter is used as the disconnect device, the disconnect device shall remain readily operable.



Note

- The type plate is located on the bottom of the apparatus.

2 Your Bluetooth speaker

Congratulations on your purchase, and welcome to Philips! To fully benefit from the support that Philips offers, register your product at www.philips.com/welcome.

Introduction

With this product, you can

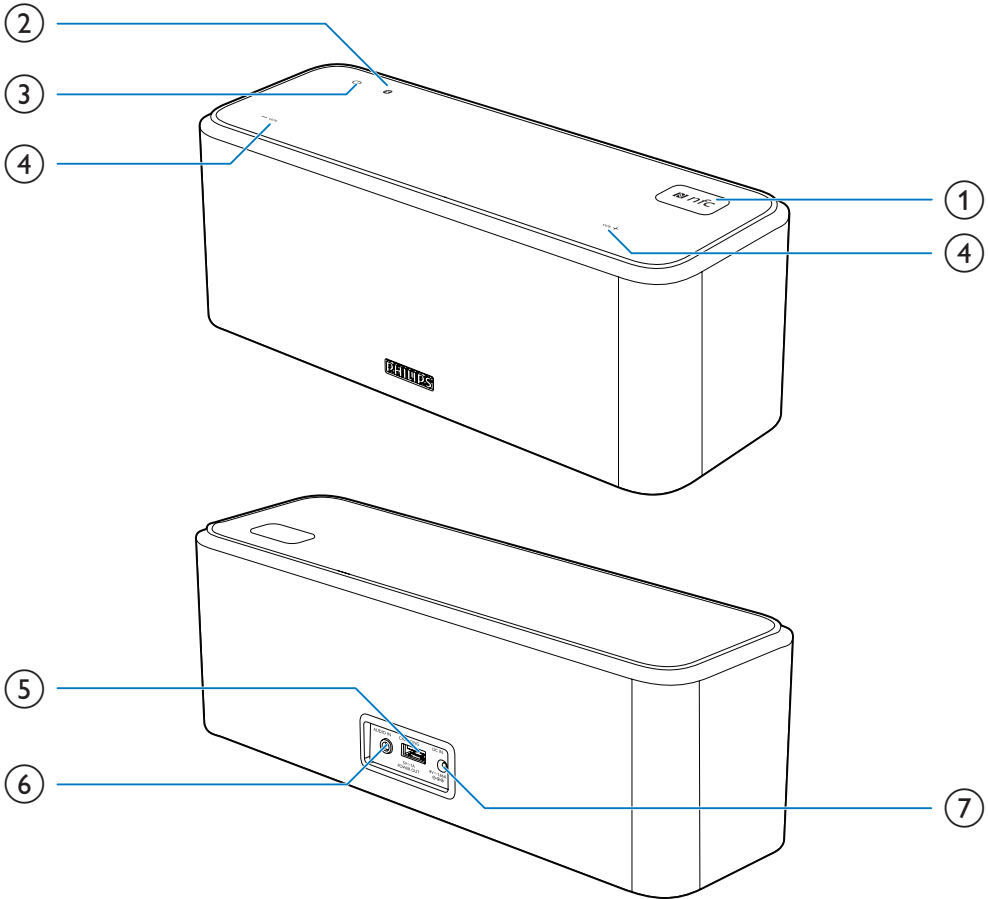
- play audio from Bluetooth-enabled devices, or other external devices;
- charge your mobile devices.

What's in the box

Check and identify the contents of your package:

- Main unit
- Power adaptor
- Audio-in cable
- Short user manual

Overview of the speaker



① NFC

- Connect a device with NFC feature through Bluetooth.

②

- Bluetooth indicator;

③

- Turn on the speaker or switch to standby mode.
- Disconnect the paired device.
- Enter Bluetooth pairing mode.
- Clear Bluetooth pairing information.

④ -VOL/VOL +

- Adjust volume.

⑤ CHARGING

- Charge mobile devices.

⑥ AUDIO IN

- Connect an external audio device.

⑦ DC IN

- Connect power.

3 Get started

Always follow the instructions in this chapter in sequence.

Power supply


Either AC power or battery can be used as power supply of this product.

Option 1: Battery power

! Caution

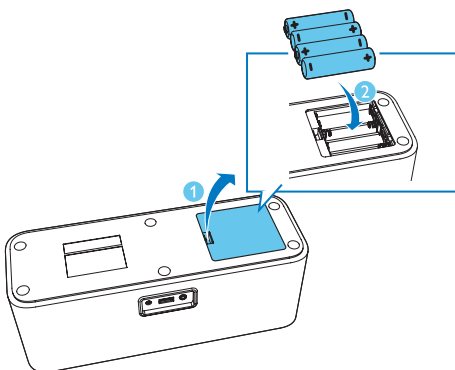
- Risk of explosion! Keep batteries away from heat, sunshine, or fire. Never discard batteries in fire.
- Batteries contain chemical substances, so they should be disposed of properly.

≡ Note

- Batteries are not supplied with the accessories.
- If battery is low, the  button flashes when the speaker is turned on.

To install the batteries:

- 1 Open the battery compartment.
- 2 Insert 4 AA batteries with correct polarity (+/-) as indicated.
- 3 Close the battery compartment.



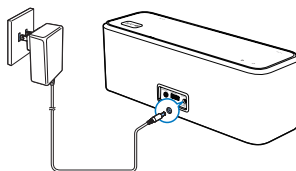
Option 2: AC power

! Caution

- Risk of product damage! Make sure that the power voltage corresponds to the voltage printed on the back or underside of the speaker.
- Risk of electric shock! When you unplug the AC adapter, always pull the plug from the socket. Never pull the cord.

Connect the power adaptor to:

- the **DC IN** socket at the back of the speaker;
- the wall outlet.




Turn on

Press .

- ↳ The speaker switches to Bluetooth mode.
- ↳ The Bluetooth indicator begins to flash.

Switch to standby mode

The speaker switches to standby mode in the following situation:

- Press  again;
- The connection with Bluetooth device or other device is invalid for 15 minutes; or
- Music playback is stopped for 15 minutes.

4 Play from Bluetooth-enabled devices

With this product, you can listen to audio from Bluetooth-enabled devices.

Connect a device

Note

- Make sure that your Bluetooth device is compatible with this speaker.
- Before pairing a device with this speaker, read its user manual for Bluetooth compatibility.
- The speaker can memorize a maximum of 4 paired devices.
- Make sure that Bluetooth function is enabled on your device, and your device is set as visible to all other Bluetooth devices.
- Any obstacle between this speaker and a Bluetooth device can reduce the operational range.
- Keep away from any other electronic device that may cause interference.

Connect a device manually

Note

- The operational range between this speaker and a Bluetooth device is approximately 10 meters (30 feet).

- 1 Press **⏻** on the speaker.
↳ The Bluetooth indicator **Ⓡ** begins to flash.
- 2 On your Bluetooth device, enable Bluetooth and search for Bluetooth devices (refer to the user manual of the device).
- 3 When **[Philips SB365]** is displayed on your device, select it to start pairing and connection. If necessary, enter default password "0000".

- ↳ After successful pairing and connection, the speaker beeps twice, and the Bluetooth indicator turns solid blue.

To disconnect the Bluetooth-enabled device:

- Press and hold **⏻** for 3 seconds;
- Disable Bluetooth on your device; or
- Move the device beyond the communication range.

To reconnect the Bluetooth-enabled device:

- Next time you turn on the speaker, the speaker will reconnect the last connected device automatically; or
- On your Bluetooth device, select "PHILIPS SB365" on your Bluetooth menu to start connection.

To connect another Bluetooth-enabled device:

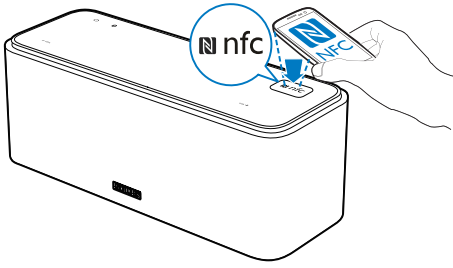
- 1 Press and hold **⏻** for 3 seconds to disconnect the currently connected device;
↳ The speaker enters Bluetooth pairing mode.
- 2 Connect another Bluetooth device.

Connect a device through NFC

Near Field Communication (NFC) is a technology that enables short-range wireless communication between various NFC compatible devices, such as mobile phones and IC tags.

If your Bluetooth device supports NFC, you can connect it with this speaker easily.

- 1 Press **⏻** on the speaker.
↳ The Bluetooth indicator **Ⓡ** begins to flash.
- 2 Enable the NFC feature on your Bluetooth device (see the user manual of the device for details).
- 3 Touch the NFC tag on the speaker with the back of your Bluetooth device.



- 4 On your Bluetooth device, accept the pairing request with "SB365". If necessary, input "0000" as the pairing password.
- 5 Follow the on-screen instructions to complete the pairing and connection.
 - ➔ After successful pairing and connection, the speaker beeps twice, and the Bluetooth indicator turns solid blue.


LED indicator	Description
Flashing blue	Connecting or waiting for connection
Solid blue	Connected

Play from Bluetooth device

After successful Bluetooth connection, play audio on the Bluetooth device.

- ➔ Audio streams from your Bluetooth device to the speaker.

Clear the pairing information

In Bluetooth mode, press and hold  for 8 seconds.

- ➔ All the Bluetooth pairing information is erased.

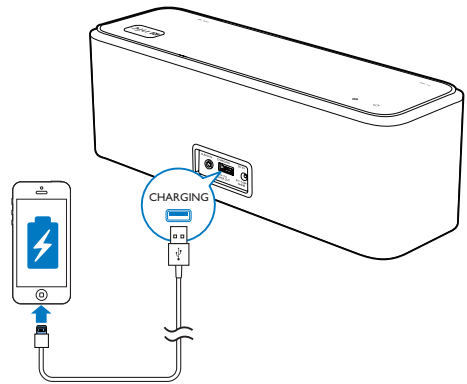
5 Other features

Charge your mobile devices

With this speaker, you can charge your mobile devices through the **CHARGING** socket.

Note

- The USB socket is used for charging only.
- In AC power supply mode, connect to your mobile device with a USB cable (not supplied).
 - ➔ Once the device is recognized, the charging starts.



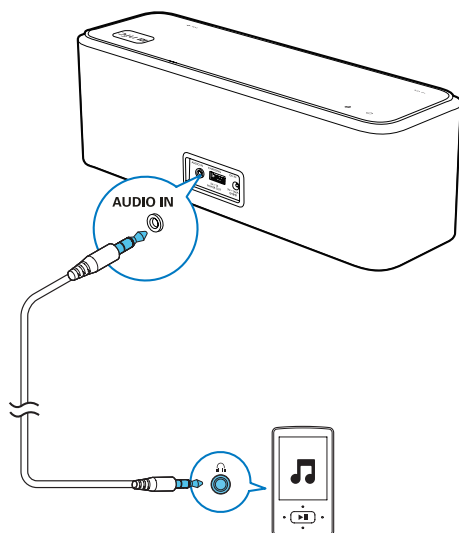
Listen to an external device

With this speaker, you can also listen to an external audio device such as an MP3 player.

Note

- Make sure that there is no Bluetooth connection, or music playback through Bluetooth is paused.

- 1 Connect the supplied audio input cable to
 - the **AUDIO IN** socket on this speaker;
 - and
 - the headphone socket on the external device.




- 2 Play audio on the external device (refer to its user manual).

Adjust volume

During play, press **VOL +** or **-VOL** to increase or decrease volume.

Note

- When the volume reaches the minimum or maximum, the  button flashes for one second.

6 Product information

Note

- Product information is subject to change without prior notice.

Specifications

Amplifier

Rated Output Power	2 X 4 W RMS
Signal to Noise Ratio	> 65 dBA
AUX Input	600 mV

Bluetooth

Bluetooth version	V4.0
Supported profiles	A2DP, AVRCP
Range	10 m (Free space)

General information

Power Supply

- AC Power (power adapter)	Brand name: PHILIPS; Power adapter A: Model: OH-1015A0901660U1-UL; Input: 100-240 V~, 50/60 Hz, 350 mA; Output: 9 V \approx 1.66 A; Power adapter B: Model: TPA103B-15090-US; Input: AC100-240 V~, 50/60 Hz, 1.1A MAX; Output: 9 V \approx 1.66 A;
- Battery	4 x 1.5 V LR6 AA

Charging Voltage and Current	5 V $\overline{\text{---}}$ 1 A
Operation Power Consumption	12 W
Dimensions - Main Unit (W x H x D)	201 x 101 x 35 mm
Weight - Main Unit	0.5 kg

7 Troubleshooting



Warning

- Never remove the casing of this device.

To keep the warranty valid, never try to repair the system yourself.

If you encounter problems when using this device, check the following points before requesting service. If the problem remains unsolved, go to the Philips Web page (www.philips.com/support). When you contact Philips, make sure that the device is nearby and the model number and serial number are available.

General

No power

- Make sure that the AC power plug of the unit is connected properly.
- Make sure that there is power at the AC outlet.
- Insert the batteries with their polarities (+/– signs) aligned as indicated.
- Replace the battery.

No sound

- Adjust volume on the speaker or the Bluetooth-connected device.
- Make sure that your Bluetooth device is within the effective operational range.

No response from the unit

- Take out the batteries and turn on the unit again.
- Disconnect and reconnect the AC power plug, then turn on the unit again.
- Make sure that AC power is connected properly.
- Make sure that there is power at the AC outlet.

About Bluetooth device

The audio quality is poor after connection with a Bluetooth-enabled device.

- The Bluetooth reception is poor. Move the device closer to this product or remove any obstacle between them.

Cannot connect with the device.

- The Bluetooth function of the device is not enabled. Refer to the user manual of the device for how to enable the function.
- This product is already connected with another Bluetooth-enabled device. Disconnect that device and then try again.

The paired device connects and disconnects constantly.

- The Bluetooth reception is poor. Move the device closer to this product or remove any obstacle between them.
- For some devices, Bluetooth connection may be deactivated automatically as a power-saving feature. This does not indicate any malfunction of this product.

8 Notice

Any changes or modifications made to this device that are not expressly approved by WOOX Innovations may void the user's authority to operate the equipment.

Notice for the USA and Canada

This device complies with Part 15 of the FCC Rules and license-exempt RSS standard of Industry Canada. Operation is subject to the following two conditions:

- 1 this device may not cause harmful interference, and
- 2 this device must accept any interference received, including interference that may cause undesired operation.

This equipment has been tested and found to comply with the limits for a Class B digital device, pursuant to part 15 of the FCC Rules.

These limits are designed to provide reasonable protection against harmful interference in a residential installation. This equipment generates, uses, and can radiate radio frequency energy and, if not installed and used in accordance with the instruction manual, may cause harmful interference to radio communications. However, there is no guarantee that interference will not occur in a particular installation. If this equipment does cause harmful interference to radio or television reception, which can be determined by turning the equipment off and on, the user is encouraged to try to correct the interference by one or more of the following measures:

- Relocate the receiving antenna.
- Increase the separation between equipment and receiver.
- Connect the equipment into an outlet on a circuit different from that to which the receiver is connected.
- Consult the dealer or an experienced radio/TV technician for help.

RF Radiation Exposure Statement: This equipment complies with FCC's and IC's RF

radiation exposure limits set forth for an uncontrolled environment. The antenna(s) used for this transmitter must be installed and operated to provide a separation distance of at least 20 cm from all persons and must not be collocated or operating in conjunction with any other antenna or transmitter. Installers must ensure that 20cm separation distance will be maintained between the device (excluding its handset) and users.

CAN ICES-3(B)/NMB-3(B)

Disposal of your old product and batteries

Your product is designed and manufactured with high quality materials and components, which can be recycled and reused.

Never dispose of your product with other household waste. Please inform yourself about the local rules on the separate collection of electrical and electronic products and batteries. The correct disposal of these products helps prevent potentially negative consequences on the environment and human health.

Your product contains batteries, which cannot be disposed of with normal household waste. Please inform yourself about the local rules on separate collection of batteries. The correct disposal of batteries helps prevent potentially negative consequences on the environment and human health.

Please visit www.recycle.philips.com for additional information on a recycling center in your area.

Environmental information

All unnecessary packaging has been omitted. We have tried to make the packaging easy to separate into three materials: cardboard (box), polystyrene foam (buffer) and polyethylene (bags, protective foam sheet.)

Your system consists of materials which can be recycled and reused if disassembled by a specialized company. Please observe the local regulations regarding the disposal of

packaging materials, exhausted batteries and old equipment.



The Bluetooth® word mark and logos are registered trademarks owned by Bluetooth SIG, Inc. and any use of such marks by WOOX Innovations is under license.



The N Mark is a trademark or registered trademark of NFC Forum, Inc. in the United States and in other countries.



Specifications are subject to change without notice.
2014 © WOOX Innovations Limited. All rights reserved.
Philips and the Philips' Shield Emblem are registered
trademarks of Koninklijke Philips N.V. and are used by WOOX
Innovations Limited under license from Koninklijke Philips N.V.

SB365_37_UM_V3.0

