



Philips
Linea design cordless
phone

1.6" display/ white backlight
Handset speakerphone



M3301B

The purest line to connect

Designed with simplicity and elegance in mind, the Philips LINEA takes pride of place in any modern home. Precisely engineered and crafted, as reflected in its timeless architectural silhouette, the LINEA truly is a desirable work of art.

Outstanding design in high-quality execution

- Slender design and compact footprint for space efficiency
- Perfectly adjusted magnetic force ensures secure docking
- Calibrated keys for precise dialing
- Smart cable management maintains visual appeal at all angles
- Extra weight integrated in the base for greater stability

Ultimate calling experience

- High contrast 4.1cm (1.6") 2-line reverse display
- Advanced sound testing and tuning for superb voice quality
- Handset speakerphone allows you to talk handsfree
- Save up to 50 favorite contacts in your phonebook
- Enjoy 16 hours of talk time on a single charge

Eco-conscious product

- Zero power emission when ECO+ mode is activated

PHILIPS

Linea design cordless phone
1.6" display/ white backlight Handset speakerphone

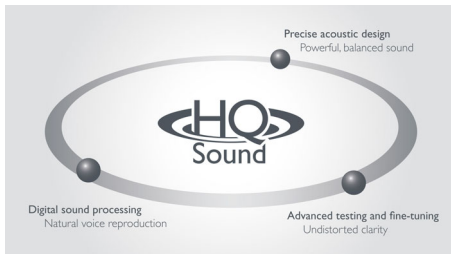
Highlights

ECO+ mode



Philips phones are energy efficient and designed to be respectful to the environment. When ECO mode is activated the emitted radiation is reduced by up to 60%, and up to 95% when the phone is charging. With ECO+ mode activation the radiation drops to zero.

Superb sound quality

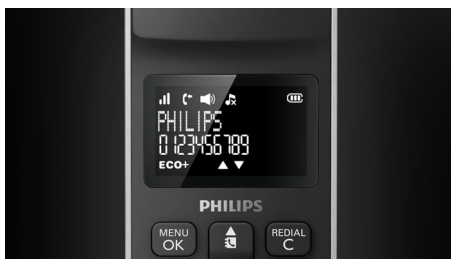


HQ-Sound refers to high quality acoustic engineering that results in voice quality so crisp and natural it is almost like being there in person. High quality components, precise acoustic design, advanced testing and fine tuning reflect decades of experience in high end audio systems and headphones.

Up to 16 hours talk time

Enjoy 16 hours of talk time on a single charge

4.1cm (1.6") reverse display



High contrast, white-on-black reverse LCD display ensures easy reading and also blends well with the overall sleek design language.

50-name phone book

Save up to 50 favorite contacts in your phonebook

Calibrated keypad



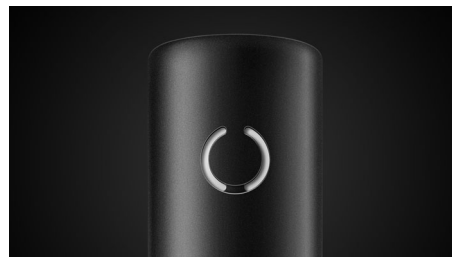
The calibrated and carefully designed keypad ensures precise dialing where you clearly feel every keystroke whether you are dialing a number or entering a phonebook contact.

Compact footprint



Slender design and compact footprint for space efficiency

Handset speakerphone



Handsfree mode uses a built-in loud speaker to amplify the voice of the caller, allowing you to speak and listen during a call without holding the phone to your ear. This is especially useful if you want to share the call with others or simply multitask.

M3301B/90

Perfect look from every angle



The smart cable management system cleverly hides the wires from sight. Intelligently designed concealed sockets and an internal cable guide ensure everything is clutter free and neatly tucked away.

Secure docking



Precisely adjusted magnets – with optimized force – are placed on the top of the handset and the base to ensure secure docking of the phone in a stable, upright position. A cleverly designed recess on the base not only serves as an attractive design highlight but also helps guide the user's hand for easy pick-up of the handset.

Weighted base for stability

Extra weight integrated in the base for greater stability

Specifications

Convenience

- Menu structure in the handset: List Menu
- Speakerphone - talk handsfree
- Signal strength indicator: 3-bar indicator
- Battery level indicator: 3-bar battery icon
- Intercom - multiple handsets
- Date / Time display
- Battery charge indication
- Signal strength indication
- Programmable hot keys: Key 1 and 2
- Call Management: Call Waiting*, Caller ID*, Microphone mute, Missed Calls, Received Calls
- Keypad lock
- Key tone on/off
- Auto hang up
- Multi base capability: 1
- Multi handset capability: Up to 4
- Backlit keypad: White
- Up to 16 hrs talk time
- Up to 180 hrs standby time
- Charge time: 8 hours
- Line cord length: 1.8m
- Power cord length: 1.8m
- Range: Open field <300m; in door <50m

Sound

- Ringtones on handset: 10 polyphonic
- HQ-Sound

Picture/Display

- Display size: 4.1cm / 1.6"
- Display type: 1-line dot matrix + 1-line numeric + hard icons
- Backlight: Yes
- Backlight color: White

Memory Capacity

- Phonebook: 50 names and numbers
- Redial List Capacity: 10 entries
- Call log entries: 20 entries
- Phonebook store in the base

Power

- Battery capacity: 550 mAh
- Battery type: 2xAAA NiMH Rechargeable
- Mains power: AC 100-240V ~50/60Hz
- Power Consumption: < 0.7 W

Security

- Transmission encryption : Yes

Network Features

- Compatible: GAP

SAR Value

- Philips handsets: <0.1 W/kg

Eco Design

- Eco+

Packaging dimensions

- Packaging type: Carton
- Number of products included: 1
- Type of shelf placement: Laying
- Packaging dimensions (W x H x D): 22.5 x 12 x 10 cm
- Gross weight: 0.585 kg
- Nett weight: 0.4076 kg
- Tare weight: 0.1774 kg
- EAN: 69 23410 73314 3



Issue date 2015-03-01

Version: 5.1.2

12 NC: 8670 001 19298
EAN: 06 92341 07331 43

© 2015 Koninklijke Philips N.V.
All Rights reserved.

Specifications are subject to change without notice.
Trademarks are the property of Koninklijke Philips N.V.
or their respective owners.

www.philips.com

**This feature requires additional subscription of Caller ID service.
Please check with your local network operator for details.