

Register your product and get support at  
[www.philips.com/welcome](http://www.philips.com/welcome)

HMP3000



EN	User manual	7
ZH-CN	用户手册	9

**PHILIPS**



EN Please refer to the safety information before using the product.  
ZH-CN 使用产品之前，请参阅安全信息。

## Trademark notice



HDMI, the HDMI logo, and High-Definition Multimedia Interface are trademarks or registered trademarks of HDMI licensing LLC in the United States and other countries.



Manufactured under license from Dolby Laboratories. Dolby and the double-D symbol are trademarks of Dolby Laboratories.



ABOUT DIVX VIDEO: DivX® is a digital video format created by DivX, Inc. This is an official DivX Certified® device that plays DivX video. Visit [divx.com](http://divx.com) for more information and software tools to convert your files into DivX video.

ABOUT DIVX VIDEO-ON-DEMAND: This DivX Certified® device must be registered in order to play purchased DivX Video-on-Demand (VOD) movies. To obtain your registration code, locate the DivX VOD section in your device setup menu. Go to [vod.divx.com](http://vod.divx.com) for more information on how to complete your registration.

DivX®, DivX Certified®, DivX Plus™ HD and associated logos are registered trademarks of DivX, Inc. and are used under license.

DivX Certified® to play DivX® and DivX Plus™ HD (H.264/MKV) video up to 1080p HD including premium content



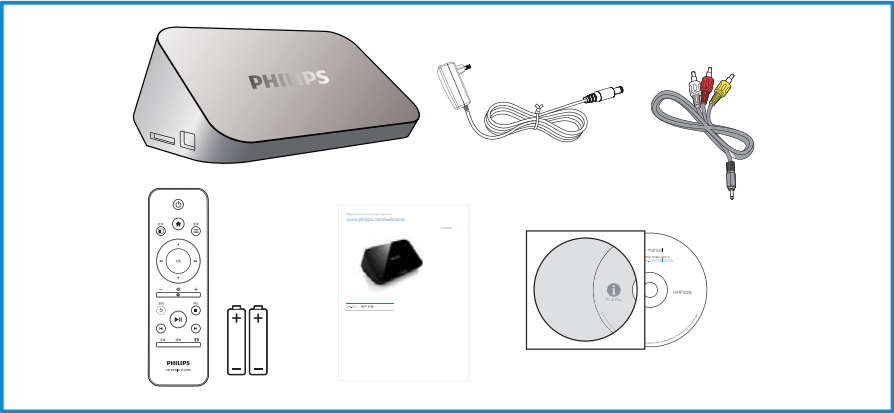
Real RMVB logo is a trademark or a registered trademark of RealNetworks, Inc.



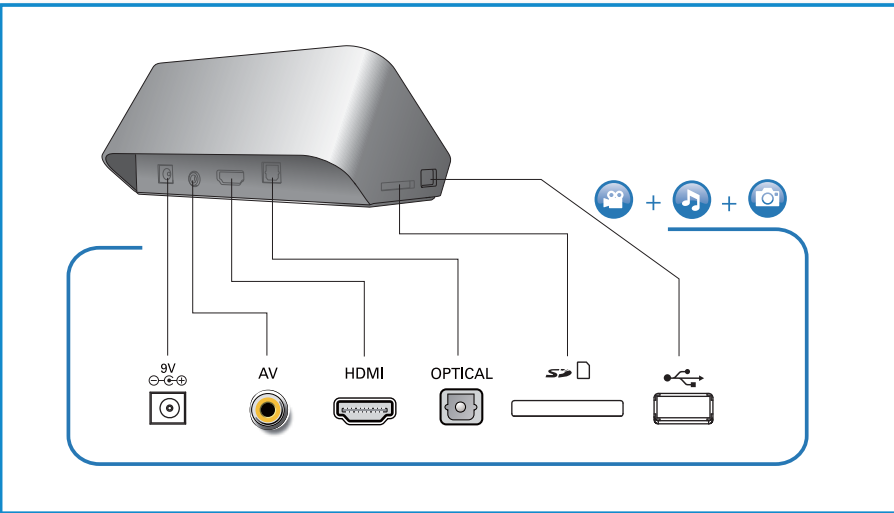
Manufactured under license under U.S. Patent Nos: 5,956,674; 5,974,380; 6,487,535 & other U.S. and worldwide patents issued & pending. DTS, the Symbol, & DTS and the Symbol together are registered trademarks & DTS 2.0+Digital Out is a trademark of DTS, Inc. Product includes software. © DTS, Inc. All Rights Reserved.

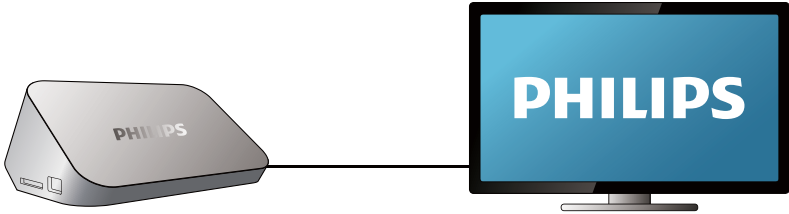
Windows Media and the Windows logo are trademarks, or registered trademarks of Microsoft Corporation in the United States and/or other countries.





# 1





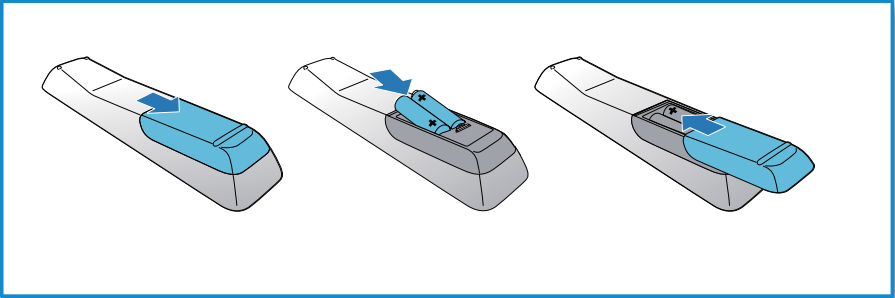
## HDMI



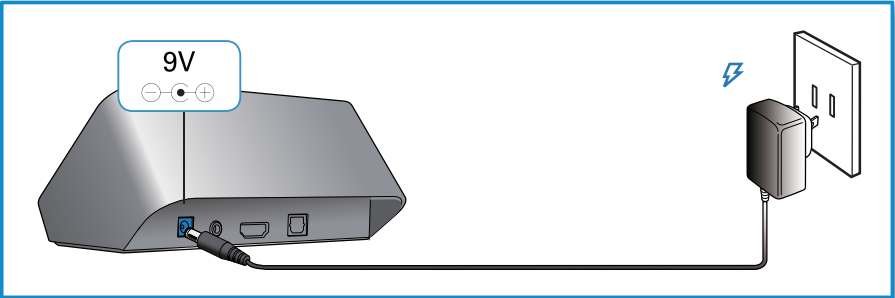
## TV OUT + AUDIO OUT



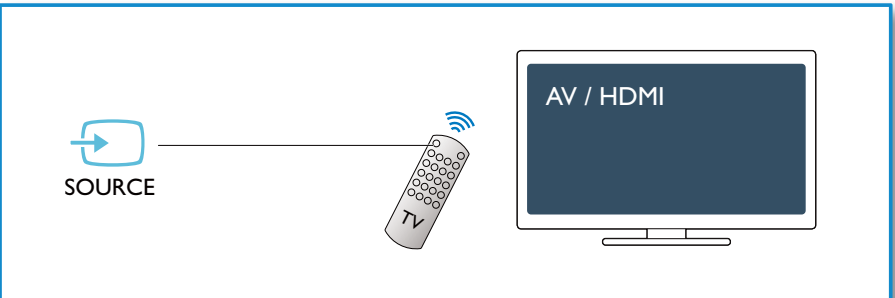
3



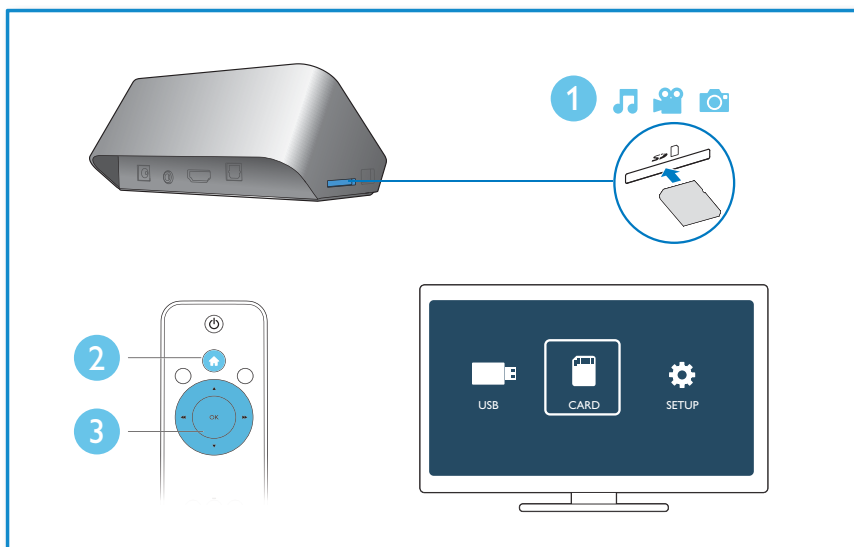
4



5



# 6



# 1 Control and play

Use your remote control to control the play.



Function	Buttons / Actions
Stop the play.	■
Pause or resume the play.	▶▶
Skip to the previous/next media file.	◀▶▶
Return to the home page.	🏠
Zoom in or out.	Press  repeatedly. • To pan through an enlarged photo, press ▲ / ▼ / ◀◀ / ▶▶.
Search backward/forward fast.	Press ◀◀ / ▶▶ repeatedly to select a speed.
Access subtitle settings.	字幕
Rotate a photo.	Press ▲ / ▼.
Navigate menus.	▲ / ▼ / ◀◀ / ▶▶
Confirm a selection or entry.	OK
Access option menus during play or in the file list.	≡
Access the file editing menu in the file folder list.	编辑

## 2 Troubleshooting

If you contact Philips, you will be asked for the model and serial number of this player. The model number and serial number are at the bottom of this player. Write the numbers here:

Model No. \_\_\_\_\_

Serial No. \_\_\_\_\_

### No picture.

- Refer to the TV user manual for how to select the correct video input channel

### No sound output from the TV.

- Make sure that the audio cables are connected to the audio input sockets that are grouped with the selected video input sockets.

### The contents of the USB storage device cannot be read.

- The format of this USB storage device is not supported.
- The supported memory size is 1TB maximum.
- Make sure that this player supports these files. (Refer to “Specifications” > “Playable media”)
- DRM-protected video files that are stored on a USB/SD storage device cannot be played through an analog video connection (for example, composite). You need to use an HDMI connection to play these files.

### DivX subtitles are not displayed correctly.

- Make sure that the subtitle filename is the same as the video filename.
- Make sure that the DivX video file and the subtitle file are saved under the same directory.

For more information, please refer to the user manual which is available in the CD rom.

# 3 Specification



## Note

Specification and design are subject to change without notice.

### File

- Video: MPEG 1/2/4(MPEG 4 Part 2), H.264, VC-1, H.263, VP6(640 × 480), DivX Plus HD, DivX 3/4/5/6, Xvid, RMVB 8/9/10, RM, WMV (V9), AVI, TS, M2TS, TP, TRP, ISO, VOB, DAT, MP4, MPEG, MPG, MOV (MPEG 4, H.264), ASF, FLV(640 × 480), MKV, M4V.
- Audio: Dolby digital, AAC, RA, OGG, MKA, MP3, WAV, APE, FLAC, DTS, LPCM, PCM, WMA (V9), IMP/MS ADPCM, WMA Pro
- Picture: JPEG, JPG, M-JPEG, PNG, TIF, TIFF, GIF (unanimated GIF), BMP, HD JPEG

### USB storage device

- Compatibility: Hi-Speed USB (2.0)

### Subtitle support

- .srt, .sub, .smi, .ssa, .ass, .txt, .psb

### SD card

- Compatibility: SDHC 2.0 (up to 32 GB)

### Video

- Signal system: PAL /NTSC
- Composite video output: 1 Vpp ~ 75 ohm
- HDMI output: 480i, 480p, 576i, 576p, 720p, 1080i, 1080p

### Audio

- Analog stereo output
- Signal to noise ratio (1 kHz): > 90 dB (A-weighted)
- Dynamic Range (1 kHz): > 80 dB (A-weighted)
- Frequency response: +/-0.2 dB
- Digital output: Optical

### Main Unit

- Dimensions (L x W x H): 136 × 86 × 52 mm
- Net Weight: 0.41 Kg

### Power

- Input: DC 9V 1.1A
- Power consumption: < 10 W
- Power consumption in standby mode: < 1 W

### Power Adapter

- Power supply rating: AC 100V-240V 50Hz / 60Hz
- Output: DC 9V 1.1A
- Brand: Philips
- Model No: SSW-1918CN-1

### Accessories

- Main unit
- Remote control
- AV cable
- Power adapter
- Disc
- User manual



# 1 控制与播放

使用遥控器控制播放。



功能	按钮/操作
停止播放。	■
暂停或继续播放。	▶▶
跳至上一个/下一个媒体文件。	◀◀▶▶
返回主页。	🏠
放大或缩小。	反复按 。 • 要平移放大的照片，请按 ▲ / ▼/◀◀/▶▶。
快退或快进搜索。	反复按 ◀◀/▶▶ 选择速度。
访问字幕设置。	字幕
旋转照片。	按 ▲ / ▼。
导航菜单。	▲ / ▼/◀◀/▶▶
确认选择或输入。	OK
在播放时或文件列表中访问选项菜单。	☰
在文件夹列表中访问文件编辑菜单。	编辑

# 2 故障种类和处理方法

如果您与 Philips 联系，将询问您该播放机的型号和序列号。型号和序列号可以在本播放机的底部找到。请在此处填写型号：

型号 \_\_\_\_\_

序列号 \_\_\_\_\_

无画面。

- 请参阅电视用户手册，了解如何选择正确的视频输入频道

电视没有声音输出。

- 确保音频电缆连接到与所选视频输入插孔分组的音频输入插孔。

无法读取 USB 存储设备中的内容。

- 不支持此 USB 存储设备格式。
- 支持的存储设备大小最大为 1TB。
- 确保本播放机支持这些文件。（请参阅“规格”>“可播放的介质”）
- 存储在 USB/SD 存储设备中且受 DRM 保护的 video 文件无法通过模拟视频连接播放（如复合）。您需要使用 HDMI 连接播放这些文件。

DivX 字幕没有正确显示。

- 确保字幕文件名与视频文件名相同。
- 确保 DivX 视频文件和字幕文件保存在相同的目录下。

有关更多信息，请参阅 CD ROM 中随附的用户手册。

# 3 规格



注

- 规格和设计如有更改, 恕不另行通知。

## 文件

- 视频: MPEG 1/2/4(MPEG 4 Part 2), H.264, VC-1, H.263, VP6(640 × 480), DivX Plus HD, DivX 3/4/5/6, Xvid, RMVB 8/9/10, RM, WMV (V9), AVI, TS, M2TS, TP, TRP, ISO, VOB, DAT, MP4, MPEG, MPG, MOV (MPEG 4, H.264), ASF, FLV(640 × 480), MKV, M4V
- 音频: 杜比数字, AAC, RA, OGG, MKA, MP3, WAV, APE, FLAC, DTS, LPCM, PCM, WMA (V9), IMP/MS ADPCM, WMA Pro
- 图片: JPEG, JPG, M-JPEG, PNG, TIF, TIFF, GIF, BMP, HD JPEG

## USB 存储设备

- 兼容性: 高速 USB (2.0)

## 字幕支持

- .srt, .sub, .smi, .ssa, .ass, .txt, .psb

## SD 卡

- 兼容性: SDHC 2.0 (最多 32 GB)

## 视频

- 信号制式: PAL / NTSC
- 复合视频输出: 1 Vpp ~ 75 欧姆
- HDMI 输出: 480i, 480p, 576i, 576p, 720p, 1080i, 1080p

## 音频

- 模拟立体声输出
- 信噪比 (1 千赫): > 90 分贝 (A 加权)
- 动态范围 (1 千赫): > 80 分贝 (A 加权)
- 频率响应: +/-0.2 dB
- 数字输出: 光学

## 主装置

- 尺寸 (长 × 宽 × 高): 136 × 86 × 52 毫米
- 净重: 0.41 千克

## 电源

- 输入: 直流 9 伏 1.1 安
- 功耗: < 10 瓦
- 待机模式下的功耗: < 1 瓦

## 电源适配器

- 额定电源: 交流 100 伏-240 伏 50 赫兹 / 60 赫兹
- 输出: 直流 9 伏 1.1 安
- 品牌: 飞利浦
- 型号: SSW-1918CN-1

## 附件

- 主装置
- 遥控器
- AV 电缆
- 电源适配器
- 光盘
- 用户手册

部件名称 Name of the Parts	有毒有害物质或元素 Hazardous/Toxic Substance					
	铅 (Pb, Lead)	汞 (Hg, Mercury)	镉 (Cd, Cadmium)	六价铬 (Chromium 6+)	多溴联苯 (PBB)	多溴二苯醚 (PBDE)
Housing 外壳	O	O	O	O	O	O
PWBs 电路板组件	X	O	O	O	O	O
Accessories (Remote control & cables) 附件 (遥控器, 电源线, 连接线)	X	O	O	O	O	O

O: 表示该有毒有害物质在该部件所有均质材料中的含量均在SJ/T11363 - 2006 标准规定的限量要求以下。  
O: Indicates that this toxic or hazardous substance contained in all of the homogeneous materials for this part is below the limit requirement in SJ/T11363 - 2006.

X: 表示该有毒有害物质至少在该部件的某一均质材料中的含量超出SJ/T11363 - 2006 标准规定的限量要求。  
X: Indicates that this toxic or hazardous substance contained in at least one of the homogeneous materials used for this part is above the limit requirement in SJ/T11363 - 2006.



### 环保使用期限 Environmental Protection Use Period

此标识指期限（十年），电子信息产品中含有的有毒有害物质或元素在正常使用的条件下不会发生外泄或突变，用户使用该电子信息产品不会对环境造成严重污染或对其人身、财产造成严重损害的期限。

This logo refers to the period ( 10 years ) during which the toxic or hazardous substances or elements contained in electronic information products will not leak or mutate so that the use of these [substances or elements] will not result in any severe environmental pollution, any bodily injury or damage to any assets.

### 电池标识 Battery labeling logo



### 环保使用期限 Environmental Protection Use Period

此标识指期限（五年），电池中含有的有毒有害物质或元素在正常使用的条件下不会发生外泄或突变，用户使用该电池产品不会对环境造成严重污染或对其人身、财产造成严重损害的期限。

This logo refers to the period ( 5 years ) during which the toxic or hazardous substances or elements contained in the **battery** will not leak or mutate so that the use of these [substances or elements] will not result in any severe environmental pollution, any bodily injury or damage to any assets.

