

Always there to help you
Register your product and get support at
www.philips.com/support



EN Short User Manual

ZH-TW 短版使用手冊

AZ330T

PHILIPS



Specifications are subject to change without notice.
2014 © WOOX Innovations Limited. All rights reserved.
Philips and the Philips' Shield Emblem are registered trademarks of Koninklijke Philips N.V. and are used by WOOX Innovations Limited under license from Koninklijke Philips N.V.
AZ330T_96_Short User Manual_V1.0



EN
Before using your product, read all accompanying safety information.

ZH-TW
在使用產品之前，請先閱讀所有隨附的安全資訊。

EN
To play with the device, you can use either alkaline battery (R14) or AC power.

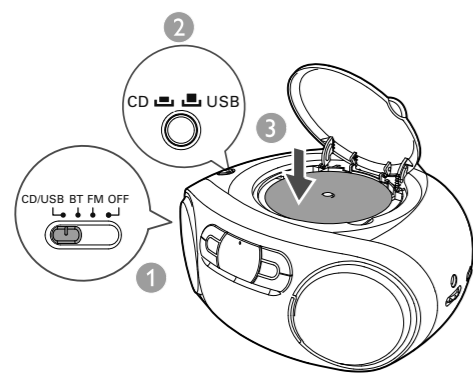
ZH-TW
若要使用本裝置進行播放，您可使用鹼性電池 (R14) 或 AC 電源。

EN

- Switch the source selector to **BT**.
→ The bluetooth indicator flashes blue.
- On your Bluetooth device, enable Bluetooth function and search for devices.
- Select **[Philips AZ330T]** on your device for pairing. If necessary, enter default password "0000".
→ After successful pairing and connection, the product beeps twice, and the LED indicator turns solid blue.
- After successful Bluetooth connection, play audio on the Bluetooth device.
Note: Press and hold **PAIRING** for two seconds to disconnect the Bluetooth connection and enter pairing mode.

ZH-TW

- 將音源選擇鈕切換至 **BT**。
→ 藍牙指示燈會閃爍藍燈。
- 在您的藍牙裝置上，啟用藍牙功能並搜尋裝置。
- 選擇裝置上的 **[Philips AZ330T]** 進行配對。視需要輸入預設密碼「0000」。
→ 成功配對與連線後，產品會發出兩次響聲，且 LED 指示燈會持續亮藍燈。
- 藍牙連線成功後，在藍牙裝置上播放音訊。
備註：按住 **PAIRING** 兩秒可中斷藍牙連線並進入配對模式。



EN

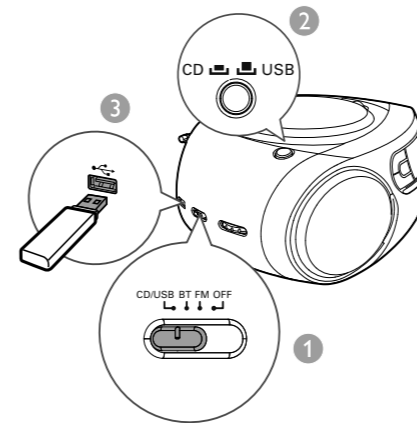
⏮ / ⏭	Press to skip to the previous/next track Press and hold to search within play, then release to resume play.
⏸	Start or pause play.
■	Stop play.
PROG	Program tracks.
+ VOLUME -	Adjust volume.
- ALBUM +	Skip the the previous or next album.
MODE	Select a play mode.

- In CD/USB/BT mode, the CD sound machine switches to standby mode automatically if there is no audio signal detected for over 15 minutes.
- Press **⏸** to wake up your CD sound machine from standby mode.

ZH-TW

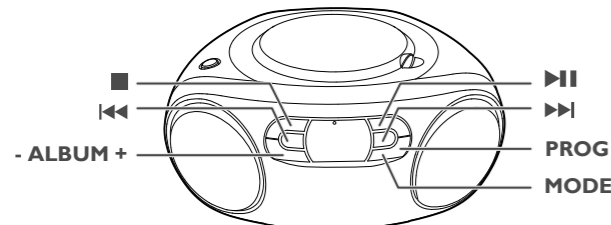
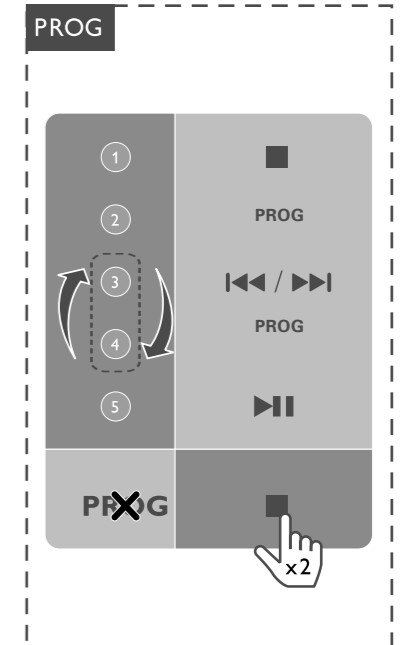
⏮ / ⏭	按下可跳至上一/下一曲目 按住可在播放內搜尋，放開即可恢復播放。
⏸	開始或暫停播放。
■	停止播放。
PROG	編排曲目。
+ VOLUME -	調整音量。
- ALBUM +	跳過上一張或下一張專輯。
MODE	選擇播放模式。

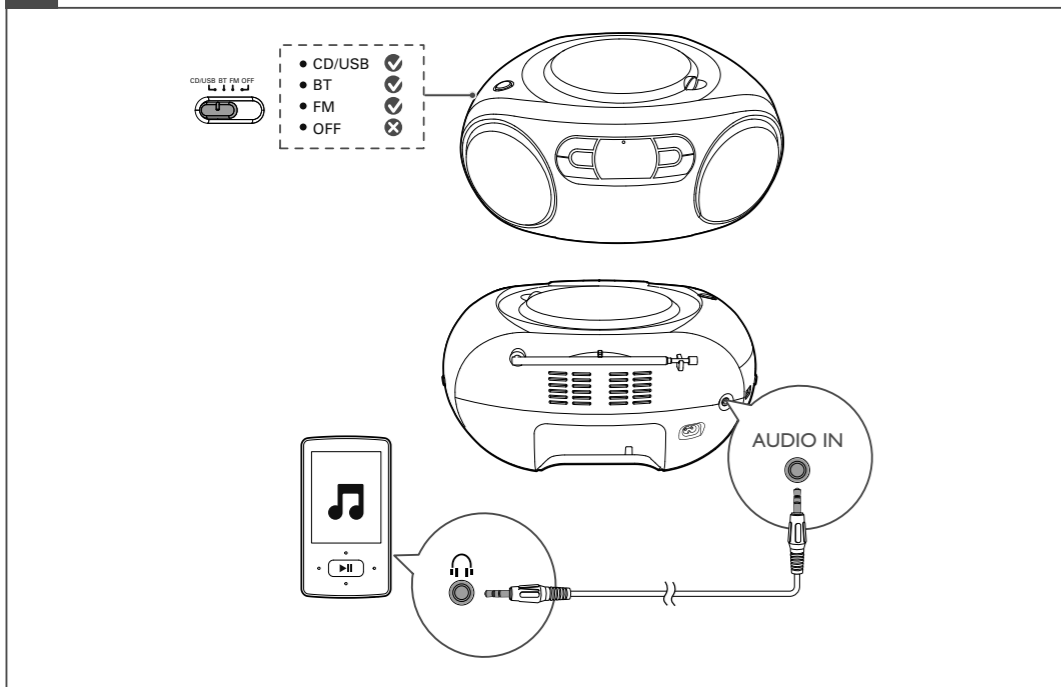
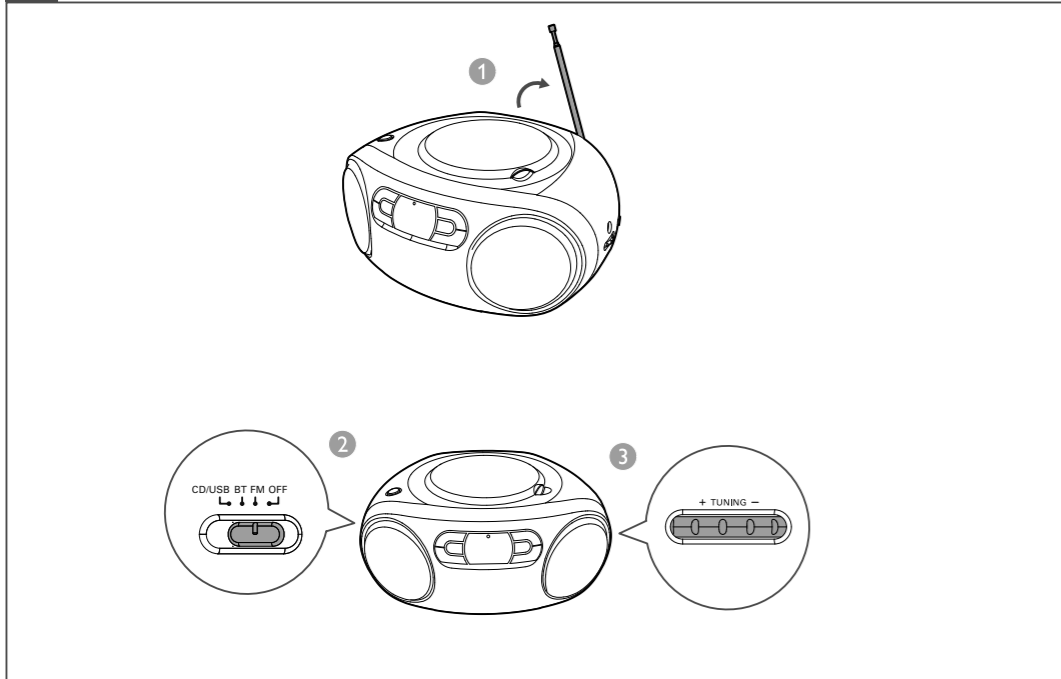
- 在 CD/USB/BT 模式中，若 CD 音響超過 15 分鐘未偵測到任何音訊，即會自動切換至待機模式。
- 按下 **⏸** 可喚醒待機模式中的 CD 音響。



EN Program tracks

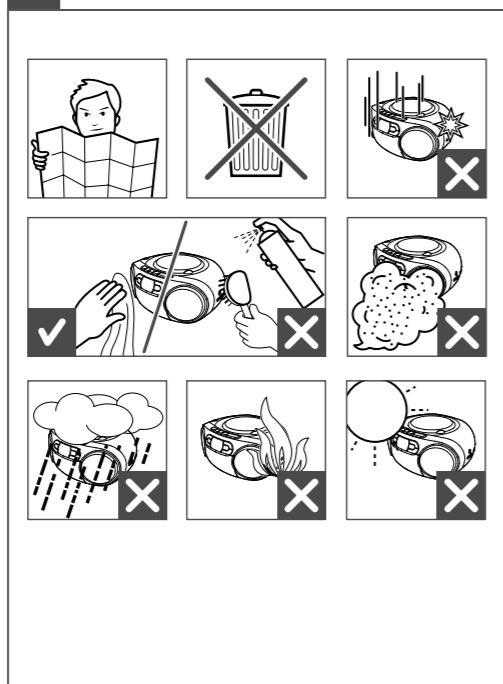
ZH-TW 編排曲目





EN
To download the full user manual, visit www.philips.com/support.

ZH-TW
若要下載完整的使用手冊，請造訪 www.philips.com/support。



EN Specifications

Amplifier	
Rated Output Power	2 x 2 W RMS
Frequency Response	125 -16000 Hz, -3dB
Signal to Noise Ratio	>57 dBA
Total Harmonic Distortion	<1 %
Audio-in Input	650 mV RMS
Disc	
Laser Type	Semiconductor
Disc Diameter	12cm/8cm
Support Disc	CD-DA, CD-R, CD-RW, MP3-CD
Audio DAC	
Audio DAC	24Bits / 44.1kHz
Frequency Response	125 -16000 Hz, -3dB
S/N Ratio	>55 dBA
Tuner	
Tuning Range	FM: 87.5 - 108MHz
Sensitivity:	
Mono, 26dB S/N Ratio	<22 dBf
Stereo, 46dB S/N Ratio	<43 dBf
Total Harmonic Distortion	<3 %
Signal to Noise Ratio	>50 dBA
Bluetooth	
Bluetooth Version	V3.0
Range	10 m (Free space)
Bluetooth Frequency Band	2.4GHz ~ 2.48GHz ISM Band
General	
Power supply	
- AC Power	110V~, 60 Hz
- Battery	DC 9 V, 6 x 1.5 V type: R14/UM2/C CELL
Operation Power Consumption	
Operation Power Consumption	15 W
Standby Power Consumption	<0.5 W
Dimensions	
- Main Unit (W x H x D)	300 x 134 x 240 mm
Weight (Main Unit)	1.4 kg

ZH-TW 規格

擴音機	
額定輸出功率	2 x 2 W RMS
頻率響應	125 -16000 Hz, -3dB
訊噪比	>57 dBA
總諧波失真	<1 %
音訊輸入	650 mV RMS
光碟	
雷射類型	半導體
光碟直徑	12 公分/8 公分
支援光碟	CD-DA、CD-R、CD-RW、MP3-CD
音訊 DAC	24 位元 / 44.1 kHz
頻率響應	125 -16000 Hz, -3dB
訊噪比	>55 dBA
調諧器	
調諧範圍	FM: 87.5 - 108MHz
敏感度:	
單聲道, 26dB 訊噪比	<22 dBf
立體聲, 46dB 訊噪比	<43 dBf
總諧波失真	<3%
訊噪比	>50 dBA
藍牙	
藍牙版本	V3.0 + EDR
範圍	10 公尺 (自由空間)
藍牙頻率波段	2.402GHz ~ 2.48GHz
一般	
電源供應	
- AC 電源	110V~, 60 Hz;
- 電池	DC 9 V, 6 x 1.5 V 類型: R14/UM2/C CELL
操作耗電量	
操作耗電量	15 W
待機耗電量	<0.5 W
尺寸	
- 主裝置 (寬 x 高 x 深)	300 x 134 x 240 公釐
重量 (主裝置)	1.4 公斤

EN

Safety

- Read these instructions.
- Follow all instructions.
- Do not block any ventilation openings. Install in accordance with the manufacturer's instructions.
- Do not install near any heat sources such as radiators, heat registers, stoves, or other apparatus (including amplifiers) that produce heat.
- Protect the power cord from being walked on or pinched, particularly at plugs, convenience receptacles, and the point where they exit from the unit.
- Only use attachments/accessories specified by the manufacturer.
- Unplug this unit during lightning storms or when unused for long periods of time.
- Recording is permissible insofar as copyright or other rights of third parties are not infringed upon.
- Refer all servicing to qualified service personnel. Servicing is required when the unit has been damaged in any way, such as power-supply cord or plug is damaged, liquid has been spilled or objects have fallen into the apparatus, the unit has been exposed to rain or moisture, does not operate normally, or has been dropped.
- Battery usage CAUTION – To prevent battery leakage which may result in bodily injury, property damage, or damage to the unit:
 - Install all batteries correctly, + and - as marked on the unit.
 - Do not mix batteries (old and new or carbon and alkaline, etc.).
 - Remove batteries when the unit is not used for a long time.
- Batteries (battery pack or batteries installed) shall not be exposed to excessive heat such as sunshine, fire or the like.
- CAUTION: Danger of explosion if battery is incorrectly replaced. Replace only with the same or equivalent type.
- The unit shall not be exposed to dripping or splashing.
- Do not place any sources of danger on the unit (e.g. liquid filled objects, lighted candles).
- Where the MAINS plug or an appliance coupler is used as the disconnect device, the disconnect device shall remain readily operable.

Warning

- Never remove the casing of this apparatus.
- Never place this apparatus on other electrical equipment.
- Never look into the laser beam inside this apparatus.

Caution

- Use of controls or adjustments or performance of procedures other than herein may result in hazardous radiation exposure or other unsafe operation.

Notice

Any changes or modifications made to this device that are not expressly approved by WOOX Innovations may void the user's authority to operate the equipment.

Disposal of your old product

Your product is designed and manufactured with high quality materials and components, which can be recycled and reused. Do not throw away the product with the normal household waste at the end of its life, but hand it in at an official collection point or recycling. By doing this, you help to preserve the environment.

Environmental information

All unnecessary packaging has been omitted. We have tried to make the packaging easy to separate into three materials: cardboard (box), paper pulp (buffer) and polyethylene (bags, protective foam sheet).

Your system consists of materials which can be recycled and reused if disassembled by a specialized company. Please observe the local regulations regarding the disposal of packaging materials, exhausted batteries and old equipment.

Trademark notice

The making of unauthorized copies of copy-protected material, including computer programs, files, broadcasts and sound recordings, may be an infringement of copyrights and constitute a criminal offence. This equipment should not be used for such purposes.

The USB-IF Logos are trademarks of Universal Serial Bus Implementers Forum, Inc.

The Bluetooth® word mark and logos are registered trademarks owned by Bluetooth SIG, Inc. and any use of such marks by WOOX Innovations is under license.

This apparatus includes these labels:



The making of unauthorized copies of copy-protected material, including computer programs, files, broadcasts and sound recordings, may be an infringement of copyrights and constitute a criminal offence. This equipment should not be used for such purposes.

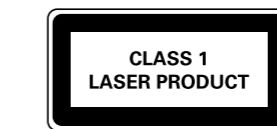


The USB-IF Logos are trademarks of Universal Serial Bus Implementers Forum, Inc.

Bluetooth

The Bluetooth® word mark and logos are registered trademarks owned by Bluetooth SIG, Inc. and any use of such marks by WOOX Innovations is under license.

This apparatus includes these labels:



Class II equipment symbol



This symbol indicates that the apparatus has a double insulation system.

Note

- The type plate is located on the bottom of the apparatus.

ZH-TW

安全性

- 閱讀這些指示。
- 遵循所有指示。
- 請勿阻塞任何通風口。請依照製造商的指示進行安裝。
- 請勿將本產品安裝在接近熱源處，例如暖氣裝置、暖氣孔、火爐或其他會產生高溫的產品 (包括擴大機在內)。
- 妥善保護電源線，避免踩踏或夾壓，尤其是插頭、便利插座，以及電源線與裝置的連接處。
- 僅使用原廠指定的附件/配件。
- 如遇雷雨或長時間不使用時，請將裝置的插頭拔除。
- 在不侵害版權或第三方其他權利的情況下可錄製。
- 所有維修服務應委託合格的服務人員處理。本裝置因故損壞時 (例如電源線或插頭損壞、液體濺灑、物品掉入產品內部、裝置淋到雨或受潮、無法正常運作或掉落等)，皆必須進行維修。
- 電池使用注意事項 – 為防止電池滲漏導致人身傷害、財物受損或產品損壞：
 - 請依照裝置上標示的 + 與 - 極正確安裝所有電池。
 - 請勿混用電池 (新舊混用或碳鹼性電池混用等)。
 - 若裝置長時間不使用時，請將電池取出。
 - 電池 (安裝的電池套組或電池) 請勿暴露在過度的熱源下，例如日照或火焰等。
 - 注意：未正確更換電池將造成電池爆炸的危險。限換用同型或通用類型。
 - 切勿將本裝置置於滴水或濺水環境中。
 - 請勿在裝置上放置危險物品 (如盛裝液體的容器、點燃的蠟燭等)。
 - 當電源插頭或產品連接器作為中斷連接裝置時，中斷連接裝置應保持隨時可操作。
 - 經型式認證合格之低功率射頻電機，非經許可，公司、商號或使用者均不得擅自變更頻率、加大功率或變更原設計之特性及功能。
 - 低功率射頻電機之使用不得影響飛航安全及干擾合法通信；經發現有干擾現象，應立即停用，並改善至無干擾時方得繼續使用。

警告

- 請勿打開產品外殼。
- 請勿將本產品放置在其他電器上。
- 請勿直視本產品內的雷射光。

注意

- 使用本手冊以外的方法來控制、調校或不按順序操作，可能會導致危險輻射外洩或造成危險。

注意

未經 WOOX Innovations 明示核可即變更或修改本裝置，可能導致使用者操作本設備的授權失效。

舊產品的處置



您的產品是使用高品質材料與元件所設計製造，可回收和重複使用。本產品使用壽命結束時，請勿與一般家庭廢棄物一併丟棄。請將該產品送至政府指定的回收點或進行回收。此舉能為環保盡一份心力。

環境保護資訊
所有非必要的包裝材料均已省略。我們嘗試讓包裝可以輕易拆解成三種材質：厚紙板 (外盒)、紙漿 (防震) 以及聚乙烯 (包裝袋、保護性泡棉膠紙)。

產品本身含有可回收並重複使用的材質，但是需由專業公司拆解。請根據地方法規丟棄包裝材料、廢電池和舊器材。商標說明



製作者版權保護之未經授權的資料，包括電腦程式、檔案、廣播及聲音錄製品，可能構成侵害版權之行為並引起刑事訴訟。本設備不應用於此類用途。



USB-IF 標誌為 Universal Serial Bus Implementers Forum, Inc. 的商標。

Bluetooth

Bluetooth®文字標記及標誌為 Bluetooth SIG, Inc. 之註冊商標。WOOX Innovations 對這些標記的使用均已獲得授權。本產品含有以下標記：



Class II 設備符號



此符號表示產品具有雙絕緣系統。

備註

- 機型牌位於產品底部。