



Philips
Cordless phone

D150

1.6" display/ amber backlight
Black



D1501B



Keep it simple

Designed for complete simplicity, this phone gives you all the benefits of long-lasting ergonomic comfort, and great sound reproduction. A true plug & play device with an intuitive menu, it is simplicity itself.

Nice and simple

- Easy to read 4.1 cm (1.6") display with backlight
- Ultimate convenience through easy setup
- Textured back cover for non-slip grip
- Menu in multiple local languages
- Caller ID – so you always know who is calling*
- Programmable hot keys for quick dial
- Up to 16 hours talk time on a single charge

Crystal clear sound

- Advanced sound testing & tuning for superb voice quality
- Parametric Equalizer delivers pure and clear sound
- Automatic Volume Control offsets unwanted volume variation
- Optimized antenna layout for great reception in any room

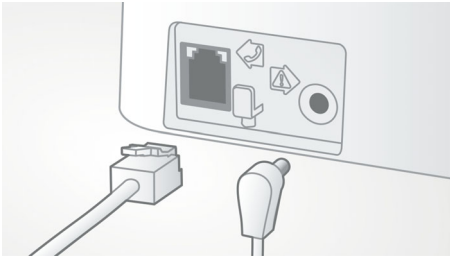
Eco-conscious product

- Low radiation and power consumption

PHILIPS

Highlights

Easy setup



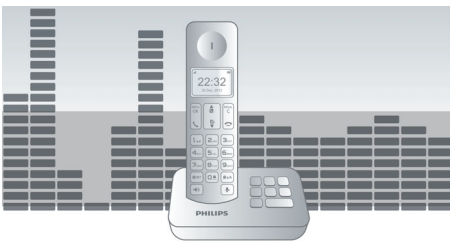
Ultimate convenience through easy set up. Simplified installation - Plug & Play product

Optimized antenna layout



Our optimized antenna layout ensures strong and stable reception – even in areas of the house where cordless transmission is difficult. Now you can take a call wherever you are in the house, and enjoy a long, uninterrupted conversation even as you walk around.

Parametric Equalizer



Our telephones use parametric equalization in the digital sound processing to fine-tune the sound response back to the intended linear frequency response curve, delivering sound that is pure and clear, for each conversation.

Automatic Volume Control



Automatic Volume Control offsets variations in sound signal, which can be caused by distance, signal strength or the caller's phone - so what you hear always remains consistent. Reducing the audio amplification for strong signals, and increasing it for weak ones, it means you can enjoy a smooth conversation without unwanted sound volume variation.

Eco-conscious product



Philips phones are energy efficient and designed to be respectful to the environment.

Menu in local languages



Enjoy easy set-up, navigation and control with intuitive menu available in local languages.

Programmable hot keys



Now calling the people you care about most is easier than ever. With simple one-touch dialing, you will never have to search for their number again. You can program up to 2 keys for instant calling.

Non-slip grip



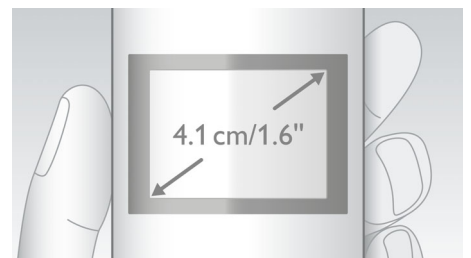
The rear of the handset is treated with a special texture for added comfort and better grip.

Up to 16 hours talk time



Up to 16 hours talk time on a single charge

4.1cm (1.6") display



Easy to read 4.1 cm (1.6") display with backlight

Specifications

Picture/Display

- Display size: 4.1 cm / 1.6"
- Display type: 12 digits (Alphanumeric) + hard icons
- Backlight: Yes
- Backlight color: Amber

Memory Capacity

- Phonebook: 50 names and numbers
- Redial List Capacity: 10 last numbers
- Call log entries: 20 entries
- Phonebook store in the base

Sound

- Volume control on handset
- Ringtones on handset: 10 standard

Convenience

- Menu structure in the handset: List Menu
- Signal strength indicator: 3- bar indicator
- Battery level indicator: 3- bar battery icon
- Date / Time display
- Base Station keys: Paging key
- Battery charge indication
- Signal strength indication
- Programmable hot keys: Key 1 and 2
- Auto hang up
- Key tone on/off
- Call Management: Call Waiting*, Caller ID*, Microphone mute, Missed Calls, Received Calls
- Multi base capability: 1
- Multi handset capability: Up to 4
- Intercom - multiple handsets
- Line cord length: 1.8m

- Power cord length: 1.8m
- Charge time: 8 hours
- Up to 16 hrs talk time
- Range: Open field <300m; in door <50m
- Keypad lock
- Non-slip grip: Circular texture
- Up to 180 hrs standby time

Power

- Battery capacity: 550 mAh
- Battery type: AAA NiMH Rechargeable
- Mains power: AC 100-240V ~50/60Hz
- Power Consumption: <0.7 W

Security

- Transmission encryption : Yes

Network Features

- Compatible: GAP

SAR Value

- Philips handsets: <0.1 W/kg

Packaging dimensions

- EAN: 87 12581 67287 4
- Type of shelf placement: Laying
- Number of products included: 1
- Packaging type: Carton
- Packaging dimensions (W x H x D): 18.4 x 13.5 x 5.5 cm
- Gross weight: 0.389 kg
- Nett weight: 0.306 kg
- Tare weight: 0.083 kg



Issue date 2015-02-18

Version: 4.0.4

12 NC: 8670 000 97229
EAN: 08 71258 16728 74

© 2015 Koninklijke Philips N.V.
All Rights reserved.

Specifications are subject to change without notice.
Trademarks are the property of Koninklijke Philips N.V.
or their respective owners.

www.philips.com