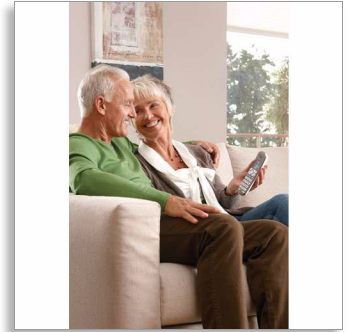




Philips SoClear
Cordless phone

5000-series

1.9" display/ white backlight
Speakerphone



XL5901C

Comfortable and simple

Visual ringer, extra loud sound

Comfortable and simple, this phone features a visual ringer, so you can see incoming calls as well as hear them. There is also extra loud volume for easy listening, as well as an extra large screen and oversize buttons for easy dialing.

Hear everything loud and clear

- Extra loud sound for clear voice reproduction
- Handset speakerphone allows you to talk handsfree
- Hearing aid compatible - reduces unwanted noise
- Optimized antenna layout for great reception in any room

Smart, simple and easy to use

- Large display and easy to read characters
- Visual ringer flashes to alert you of incoming calls
- Instantly call your loved ones via speed-dial keys
- Ultimate convenience through easy setup
- Up to 19 hours talk time on a single charge

Eco-conscious product

- 60% reduction of radiation when ECO mode is activated
- Low power consumption: < 0,6W in stand-by mode

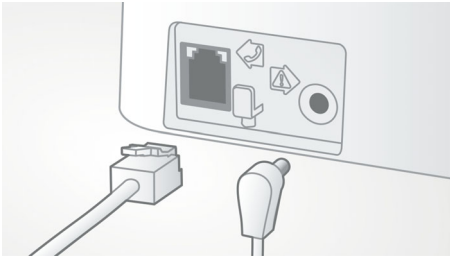
PHILIPS

Cordless phone
5000-series 1.9" display/ white backlight, Speakerphone

XL5901C/51

Highlights

Easy setup



Ultimate convenience through easy set up.
Simplified installation - Plug & Play product

ECO mode



60% reduction of radiation when ECO mode is activated

Extra loud sound



Extra loud sound for clear voice reproduction

Handset speakerphone



Handsfree mode uses a built-in loud speaker to amplify the voice of the caller, allowing you to speak and listen during a call without holding the phone to your ear. This is especially useful

if you want to share the call with others or simply multitask.

Hearing aid compatible



Hearing aid compatible - reduces unwanted noise

Instant calling



Instantly call your loved ones via speed-dial keys

Large, easy to read display



Large display and easy to read characters

Optimized antenna layout



Our optimized antenna layout ensures strong and stable reception – even in areas of the

house where cordless transmission is difficult. Now you can take a call wherever you are in the house, and enjoy a long, uninterrupted conversation even as you walk around.

Up to 19 hours talk time



Up to 19 hours talk time on a single charge

Visual ringer



Visual ringer flashes to alert you of incoming calls

Low power consumption: < 0.6 W



Philips phones are energy efficient and are designed to be respectful to the environment. Now the power consumed in stand-by mode is less than < 0.6 W.

Specifications

Sound

- Hearing Aid Compatible
- Volume control on handset
- Ringtones on handset: 10 polyphonic with progressive ringtone volume

Picture/Display

- Display size: 4.8 cm / 1.9"
- Display type: FSTN - dot matrix
- Backlight: Yes
- Backlight color: White

Convenience

- Menu structure in the handset: List Menu
- Speakerphone - talk handsfree
- Personalization: Silence mode
- Personalization (ringtone): VIP ringtones for M1, M2 and M3
- Signal strength indicator: 3- bar indicator
- Battery level indicator: 3- bar battery icon
- Intercom - multiple handsets
- Date / Time display
- Alarm Clock
- Battery charge indication
- Programmable hot keys: Key 1 and 2, and M1/2/3
- Call Management: Call Waiting*, Microphone mute, Missed Calls, Received Calls, AOH/ Caller ID
- Key tone on/off
- Auto Registration
- Auto hang up
- Multi base capability: 1
- Multi handset capability: Up to 4
- Number of keys: 23
- Backlit keypad: White (flashing when the phone rings)
- Base Station keys: Paging key
- Up to 19 hrs talk time
- Up to 300 hrs standby time
- Charge time: 8 hours

- Line cord length: 1.8m
- Power cord length: 1.8m
- Range: Open field <300m; in door <50m

Memory Capacity

- VIP Caller Identification
- Phonebook: 200 names and numbers + 2 direct access memories
- Redial List Capacity: 20 entries
- Call log entries: 50 entries
- Phonebook store in the base

Power

- Battery capacity: 650 mAh
- Battery type: AAA NiMH Rechargeable
- Mains power: AC 100-240V ~50/60Hz
- Power Consumption: < 0.6 W

Security

- Transmission encryption : Yes

Network Features

- Compatible: GAP

SAR Value

- Philips handsets: <0.1 W/kg

Eco Design

- EcoMode: automatic & manual

Packaging dimensions

- Packaging type: Carton
- Number of products included: 1
- Type of shelf placement: Laying
- Packaging dimensions (W x H x D): 19.7 x 15.7 x 8.3 cm
- Gross weight: 0.553 kg
- Nett weight: 0.429 kg
- Tare weight: 0.124 kg
- EAN: 87 12581 66147 2



Issue date 2015-03-01

Version: 1.0.3

12 NC: 8670 000 95779
EAN: 87 12581 66147 2

© 2015 Koninklijke Philips N.V.
All Rights reserved.

Specifications are subject to change without notice.
Trademarks are the property of Koninklijke Philips N.V.
or their respective owners.

www.philips.com