



Short User Manual



AJ7260D

Safety

Know these safety symbols



This 'bolt of lightning' indicates uninsulated material within your unit may cause an electrical shock. For the safety of everyone in your household, please do not remove product covering. The 'exclamation point' calls attention to features for which you should read the enclosed literature closely to prevent operating and maintenance problems.
WARNING: To reduce the risk of fire or electric shock, this apparatus should not be exposed to rain or moisture and objects filled with liquids, such as vases, should not be placed on this apparatus.
CAUTION: To prevent electric shock, match wide blade of plug to wide slot, fully insert.

Warning

- Never remove the casing of this apparatus.
- Never lubricate any part of this apparatus.
- Never place this apparatus on other electrical equipment.
- Keep this apparatus away from direct sunlight, naked flames or heat.
- Ensure that you always have easy access to the power cord, plug or adaptor to disconnect the apparatus from the power.
- Use only power supplies listed in the user manual.

Caution

- Danger of explosion if battery is incorrectly replaced.
- Remove battery if it is exhausted or will not be used for a long time.
- Batteries contain chemical substances, so they should be disposed of properly.
- Perchlorate Material-special handling may apply. See www.dtsc.ca.gov/hazardouswaste/perchlorate.

- The product/remote control may contain a coin/button type battery, which can be swallowed. Keep the battery out of reach of children at all times! If swallowed, the battery can cause serious injury or death. Severe internal burns can occur within two hours of ingestion.
- If you suspect that a battery has been swallowed or placed inside any part of the body, seek immediate medical attention.
- When you change the batteries, always keep all new and used batteries out of reach of children. Ensure that the battery compartment is completely secure after you replace the battery.
- If the battery compartment cannot be completely secured, discontinue use of the product. Keep out of reach of children and contact the manufacturer.
- Batteries (battery pack or batteries installed) shall not be exposed to excessive heat such as sunshine, fire or the like.
- Battery usage CAUTION – To prevent battery leakage which may result in bodily injury, property damage, or damage to the remote control:
 - Install all batteries correctly, + and - as marked on the remote control.
 - Do not mix batteries (old and new or carbon and alkaline, etc.).
 - Remove batteries when the remote control is not used for a long time.
- Make sure that there is enough free space around the product for ventilation.
- The system shall not be exposed to dripping or splashing.
- Do not place any sources of danger on the system (e.g. liquid filled objects, lighted candles).
- Where the MAINS plug or an appliance coupler is used as the disconnect device, the disconnect device shall remain readily operable.

Notice

Any changes or modifications made to this device that are not expressly approved by Philips Consumer Lifestyle may void the user's authority to operate the equipment.

This product complies with the radio interference requirements of the European Community.



Your product is designed and manufactured with high quality materials and components, which can be recycled and reused.



When this crossed-out wheeled bin symbol is attached to a product it means that the product is covered by the European Directive 2002/96/EC. Please inform yourself about the local separate collection system for electrical and electronic products.



Please act according to your local rules and do not dispose of your old products with your normal household waste. Correct disposal of your old product helps to prevent potential negative consequences for the environment and human health.

Your product contains batteries covered by the European Directive 2006/66/EC, which cannot be disposed with normal household waste. Please inform yourself about the local rules on separate collection of batteries because correct disposal helps to prevent negative consequences for the environmental and human health.

Environmental information

All unnecessary packaging has been omitted. We have tried to make the packaging easy to separate into three materials: cardboard (box), polystyrene foam (buffer) and polyethylene (bags, protective foam sheet.)

Your system consists of materials which can be recycled and reused if disassembled by a specialized company. Please observe the local regulations regarding the disposal of packaging materials, exhausted batteries and old equipment.



"Made for iPod," "Made for iPhone," and "Made for iPad" mean that an electronic accessory has been designed to connect specifically to iPod, iPhone, or iPad, respectively, and has been certified by the developer to meet Apple performance standards. Apple is not responsible for the operation of this device or its compliance with safety and regulatory standards. Please note that the use of this accessory with iPod, iPhone, or iPad may affect wireless performance.

iPod and iPhone are trademarks of Apple Inc., registered in the U.S. and other countries. iPad is a trademark of Apple Inc.

Class II equipment symbol:



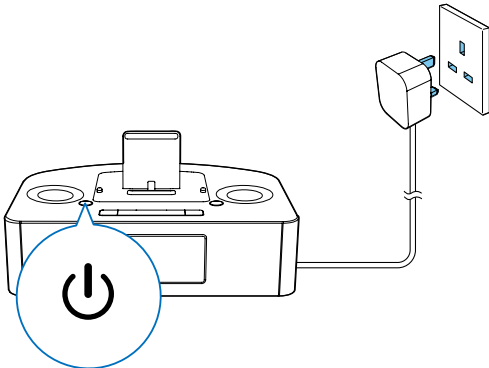
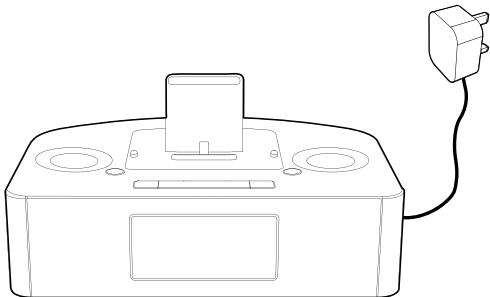
CLASS II apparatus with double insulation, and no protective earth provided.

Note

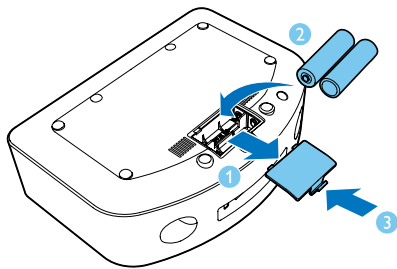
- The type plate is located on the bottom of the unit.

Specifications

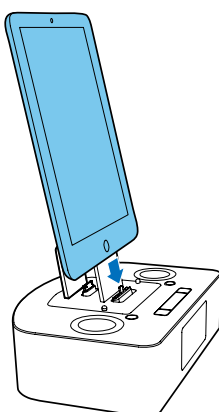
Total output power	8 W
Frequency Response	80 Hz -16 kHz, ±3dB
Signal to Noise Ratio	≥67dBA
Aux Input (Audio in)	0.6 V RMS 20kohm
Tuning Range	FM 87.5 - 108 MHz
Tuning grid	50 KHz
- Mono, 26dB quieting sensitivity	<22 dBf
- Stereo, 46dB quieting sensitivity	<51 dBf
Search Sensitivity	<41 dBf
Total Harmonic Distortion	<2%
Signal to Noise Ratio	FM: >45 dB
Speaker Impedance	4 ohm
Speaker Driver	57mm
Sensitivity	>84dB/m/W
AC power	220-240V~,50/60 Hz
Operation Power Consumption	44 W
Standby Power Consumption (clock display)	<1 W
Dimensions - Main Unit (W x H x D)	260 x 138 x 185 mm
Weight (Main unit, without packing)	1.13 kg



Tip: Press again to switch the unit to standby mode.

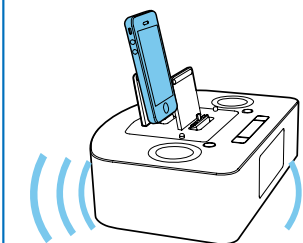


You can only use AC power as power supply. Batteries (not supplied) are for backup purpose.



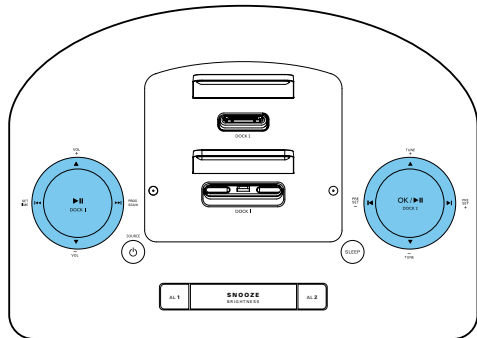
Dock 1

- iPod nano (7th generation)
- iPod touch (5th generation)
- iPad (4th generation)
- iPad mini
- iPhone 5



Dock 2

- iPod nano (2nd/3rd/4th/5th/6th generation)
- iPod classic
- iPod touch (1st/2nd/3rd/4th generation)
- iPad (3rd generation)
- iPad 2
- iPad
- iPhone 4S
- iPhone 4
- iPhone 3GS
- iPhone 3G
- iPhone



Listen to the iPod/iPhone/iPad

Press **SOURCE** repeatedly to select DOCK 1 or DOCK 2 mode.

- To pause/resume play, press **II**
- To skip to a track, press **II**
- To search during play, press and hold **II** or **PRESET** +/-/PRESET -, then release to resume normal play.

During play, press **SET TIME** repeatedly to select from a preset sound effect and turn on/off dynamic bass enhancement.



