



## Micro Hi-Fi System

MCM239D

Register your product and get support at  
[www.philips.com/welcome](http://www.philips.com/welcome)

User manual

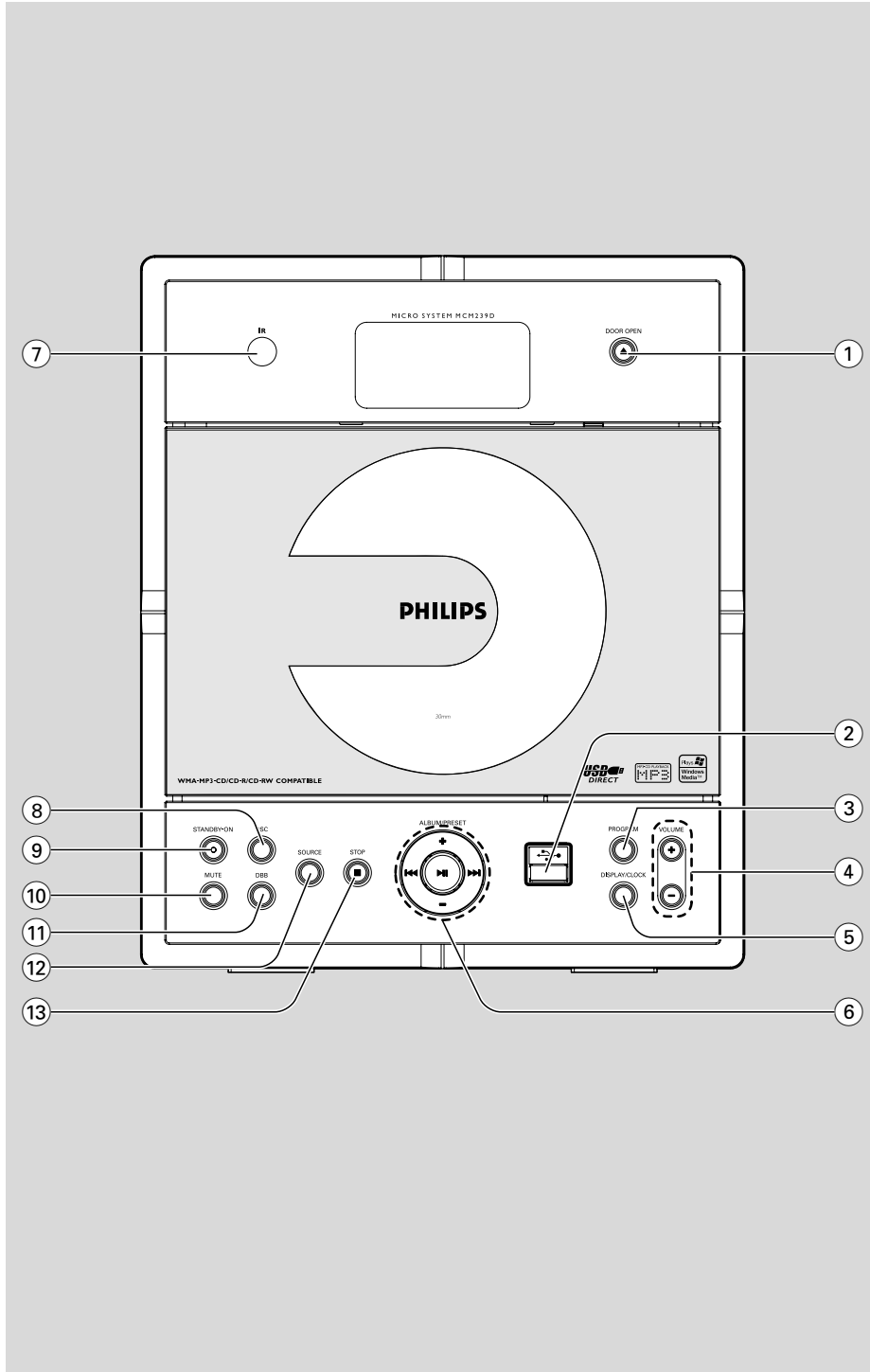


# PHILIPS



**CAUTION**

*Use of controls or adjustments or performance of procedures other than herein may result in hazardous radiation exposure or other unsafe operation.*



3



# Contents

## General Information

Supplied accessories .....	5
Environmental information .....	5
Safety information .....	6

## Controls

Controls on the set .....	7
Remote control .....	8-9

## Installation

Placing MCM239D .....	9
Mounting the stand onto the set	
Rear connections .....	10-11
Speaker connections	
Antenna connections	
Connecting an additional appliance .....	11-12
Connecting a USB device	
Connecting a non-USB device	
Using AC power .....	12

## Preparations

Using the remote control .....	13
Setting the clock .....	13

## Basic Functions

Switching on/off the set and selecting functions .....	14
Switching between Standby and Auto-standby .....	14
Volume control .....	14
Volume adjustment	
MUTE	
Sound control .....	14
DSC	
DBB	
Displaying the clock .....	14

## CD

Discs for playback .....	15
Playing discs .....	15
Selecting and searching .....	16
Selecting a different track	
Finding a passage within a track during playback	
Programming tracks .....	16
Reviewing the program	
Erasing the program	
Different play modes: REPEAT, SHUFFLE .....	17
Display track information (MP3/WMA only) .....	17

## Tuner

Tuning to radio stations .....	18
Programming radio stations .....	18
Autostore:Automatic programming	
Manual programming	
To listen to a preset station	

## USB

Using a USB mass storage device .....	19-20
Playing a USB mass storage device	

## AUX

AUX (Listening to an external source) .....	20
---	----

## iPod

Playing iPod using the dock .....	21-22
Compatible portable player	
Dock	
Dock adaptor	
Selecting the correct dock adaptor	
Installing the dock adaptor	
Removing the dock adaptor	
Playing iPod	
Charging iPod battery using the dock	

## Timer

Setting the timer .....	23
Activating and deactivating TIMER .....	23

## SLEEP

.....	23
-------	----

<b>Specifications</b> .....	24
-----------------------------	----

<b>Maintenance</b> .....	24
--------------------------	----

<b>Troubleshooting</b> .....	25-26
------------------------------	-------

## General Information

**Congratulations on your purchase and welcome to Philips!**

**To fully benefit from the support that Philips offers, register your product at [www.philips.com/welcome](http://www.philips.com/welcome).**

### Supplied accessories

- 1 X certified power adapter  
(Input: 100-240V ~50/60Hz 0.7A,  
Output: 15V ===1.2A)
- 2 speaker boxes including 2 speaker cables
- remote control (with 1 x CR2025 battery)
- MW loop antenna
- FM wire antenna
- stand
- Docking kit
  - 1 dock used for Apple iPod
  - Dock adaptors (8 adaptors for different iPod types)

### Environmental Information

All unnecessary packaging has been omitted. We have tried to make the packaging easy to separate into three materials: cardboard (box), polystyrene foam (buffer) and polyethylene (bags, protective foam sheet).

Your system consists of materials which can be recycled and reused if disassembled by a specialized company. Please observe the local regulations regarding the disposal of packaging materials, exhausted batteries and old equipment.

### Safety Information

- Place the system on a flat, hard and stable surface.
- Where the MAINS plug or an appliance coupler is used as the disconnnet device, the disconnnet device shall remain readily operable.
- Install the unit near the AC outlet and where the AC power plug can be easily reached.
- The apparatus shall not be exposed to dripping or splashing.
- Place the system in a location with adequate ventilation to prevent internal heat build-up in your system. Allow at least 10 cm (4 inches) clearance from the rear and the top of the unit and 5 cm (2 inches) from each side.
- The ventilation should not be impeded by covering the ventilation openings with items, such as newspapers, table-cloths, curtains, etc.
- Do not expose the system, batteries or discs to excessive moisture, rain, sand or heat sources caused by heating equipment or direct sunlight.
- No naked flame sources, such as lighted candles, should be placed on the apparatus.
- No objects filled with liquids, such as vases, shall be placed on the apparatus.
- If the system is brought directly from a cold to a warm location, or is placed in a very damp room, moisture may condense on the lens of the disc unit inside the system. Should this occur; the CD player would not operate normally. Leave the power on for about one hour with no disc in the system until normal playback is possible.
- The mechanical parts of the set contain self-lubricating bearings and must not be oiled or lubricated.
- **When the system is switched to Standby mode, it is still consuming some power. To disconnect the system from the power supply completely, remove the AC power plug from the wall socket.**

English

## General Information

### Hearing Safety

#### Listen at a moderate volume.

- Using headphones at a high volume can impair your hearing. This product can produce sounds in decibel ranges that may cause hearing loss for a normal person, even for exposure less than a minute. The higher decibel ranges are offered for those that may have already experienced some hearing loss.
- Sound can be deceiving. Over time your hearing "comfort level" adapts to higher volumes of sound. So after prolonged listening, what sounds "normal" can actually be loud and harmful to your hearing. To guard against this, set your volume to a safe level before your hearing adapts and leave it there.

#### To establish a safe volume level:

- Set your volume control at a low setting.
- Slowly increase the sound until you can hear it comfortably and clearly, without distortion.

#### Listen for reasonable periods of time:

- Prolonged exposure to sound, even at normally "safe" levels, can also cause hearing loss.
- Be sure to use your equipment reasonably and take appropriate breaks.

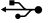
#### Be sure to observe the following guidelines when using your headphones.

- Listen at reasonable volumes for reasonable periods of time.
- Be careful not to adjust the volume as your hearing adapts.
- Do not turn up the volume so high that you can't hear what's around you.
- You should use caution or temporarily discontinue use in potentially hazardous situations.
- Do not use headphones while operating a motorized vehicle, cycling, skateboarding, etc.; it may create a traffic hazard and is illegal in many areas.

## Controls

English

### Controls on the set (illustrations on page 3)

- ① **DOOR OPEN**
  - press to open the CD door.
- ② 
  - jack for the external USB mass storage device
- ③ **PROGRAM**
  - **CD/USB:** programs tracks
  - **Tuner:** programs preset radio stations
- ④ **VOLUME**
  - adjusts the volume level
  - **Clock/Timer:** adjusts the hours and minutes
- ⑤ **DISPLAY/CLOCK**
  - **Clock:**
    - displays the set time
  - **In standby mode:** enters the clock setting mode (press and hold for more than 2 seconds)
  - **TUNER/Audio CD/iPod/AUX:** switches between clock display and playback display
  - **MP3/WMA files:** displays disc information during playback
- ⑥ **ALBUM/ PRESET + /-**
  - **CD/USB:** selects albums (for MP3/WMA only)
  - **TUNER:** selects a preset radio station

◀◀ / ▶▶

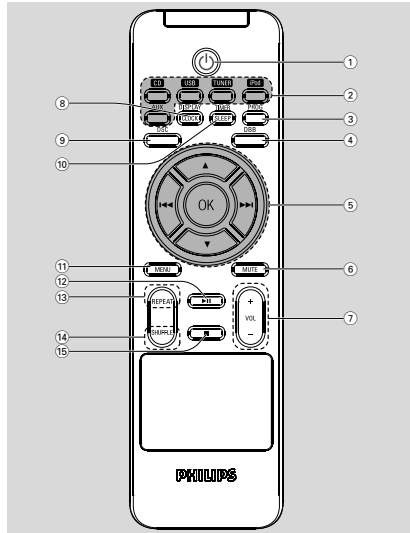
  - **CD/USB/iPod:** skips or searches CD tracks/titles backwards/forwards
  - **Tuner:** tunes to radio stations

▶ II

  - **CD/USB/iPod:** starts or pauses playback
- ⑦ **IR**
  - sensor for the infrared remote control
  - Helpful hints:** Always point the remote control towards this sensor.
- ⑧ **DSC (Digital Sound Control)**
  - selects predefined sound settings: **ROCK, JAZZ, POP, CLASSIC, OPTIMAL**
- ⑨ **STANDBY-ON**
  - press briefly to switch the set on or off (standby)
- ⑩ **MUTE**
  - switches the sound off temporarily
- ⑪ **DBB (Dynamic Bass Boost)**
  - turns the bass enhancement on/off
- ⑫ **SOURCE**
  - selects sound source **CD, USB, TUNER, iPod** or **AUX**
  - **In standby mode:** switches the set on and selects sound source **CD, USB, TUNER, iPod** or **AUX**
- ⑬ **STOP**
  - **CD/USB:** stops playback; erase a program

## Controls

### Remote control



#### Notes for remote control:

- First select the source you wish to control by pressing one of the source select keys on the remote control (for example **CD**, **TUNER**).
- Then select the desired function (for example **II**, **◀▶**).

- ① **Power**
  - press briefly to switch the set on or off (standby)
- ② **Source buttons**
  - USB**
    - selects **USB** source
    - **In standby mode:** switches the set on and selects **USB** source.
  - CD**
    - selects **CD** source
    - **In standby mode:** switches the set on and selects **CD** source.
  - TUNER**
    - selects **TUNER** source and toggles between the wavebands: FM and MW
    - **In standby mode:** switches the set on and selects **TUNER** source

#### iPod

- selects **iPod** source.
- **In standby mode:** switches the set on and selects **iPod** source

#### AUX

- selects the audio input from an additional connected appliance
- **In standby mode:** switches the set on and selects the audio input from an additional connected appliance

#### ③ PROG

- **CD/USB:** programs tracks
- **Tuner:** programs preset radio stations

#### ④ DBB (Dynamic Bass Boost)

- turns the bass enhancement on/off

#### ⑤ ◀▶ / ▶▶

- **CD/USB/iPod:** skips or searches CD tracks backwards/forwards
- **Tuner:** tunes to radio stations

#### ▲ / ▼

- **CD/USB:** selects the next/previous album (for MP3/WMA only)
- **TUNER:** selects a preset radio station
- **iPod:** navigates in iPod menu

#### OK

- **iPod:** confirms menu selection

#### ⑥ MUTE

- switches the sound off temporarily

#### ⑦ VOL + / –

- adjusts the volume level
- **Clock/Timer:** adjusts the hours and minutes

#### ⑧ DISPLAY/CLOCK

- **Clock:** - displays the set time
  - **In standby mode:** enters the clock setting mode (press and hold for more than 2 seconds)
- **TUNER/Audio CD/iPod/AUX:** switches between clock display and playback display
- **MP3/WMA files:** displays disc information during playback





## Controls

- ⑨ **DSC (Digital Sound Control)**
  - selects predefined sound settings: **ROCK**, **JAZZ**, **POP**, **CLASSIC**, **OPTIMAL**
- ⑩ **TIMER/SLEEP**
  - displays the timer setting
  - switches the timer on/off
  - enters the timer setting mode (press and hold for more than 2 seconds)
  - set the sleep timer
- ⑪ **MENU**
  - **iPod**: enters iPod menu
- ⑫ **▶ II**
  - **CD/USB/iPod**: starts or pauses playback
- ⑬ **REPEAT**
  - selects continuous playback
- ⑭ **SHUFFLE**
  - selects random playback
- ⑮ **■**
  - **CD/USB**: stops playback; erase a program

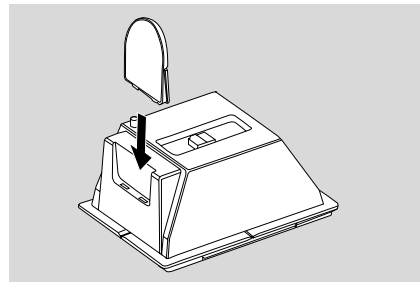
## Installation

### Placing MCM239D

MCM239D is supplied with a stand, you may attach or detach the stand to/from the main set.

### Mounting the stand onto the set

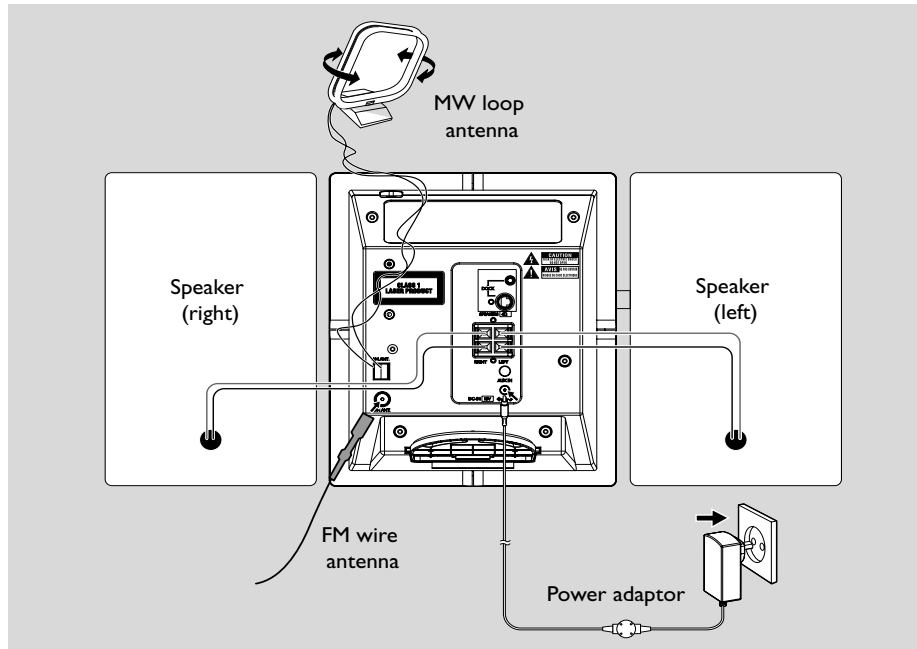
- ① Locate the bottom of the main unit and find the slot, then slide the stand in the slot until it stops, as indicated in the figure below.



English



## Installation



### Rear connections

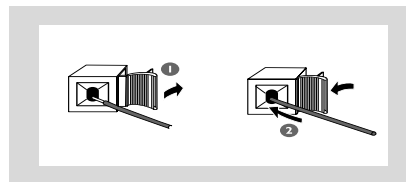
#### Warning:

- **Never make or change connections with the mains supply switched on.**
- **Install your set near the AC outlet and where the AC power plug can be reached easily.**

#### (A) Speaker connections

**Use the supplied speakers only. Using other speakers can damage the set or the sound quality will be negatively affected.**

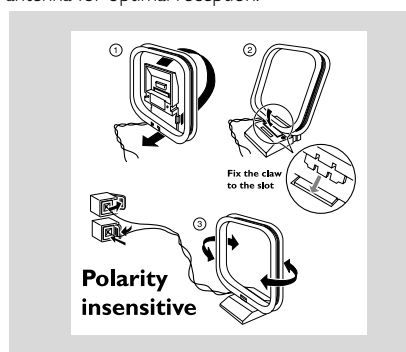
- Connect the cable of the left speaker to **LEFT** (red and black) and the cable of the right speaker to **RIGHT** (red and black) as follows:
  - a. Press the clip of the red terminal and fully insert the stripped portion of the colored (or marked) speaker cable into the socket, then release the clip
  - b. Press the clip of the black terminal and fully insert the stripped portion of the black (or unmarked) speaker cable into the socket, then release the clip



#### (B) Antenna connections

##### MW antenna

Connect the supplied MW loop antenna to the "AM aerial" terminal. Adjust the position of the antenna for optimal reception.



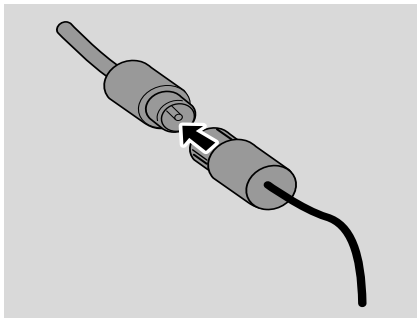
## Installation

- Position the antenna as far as possible from a TV, VCR or other radiation source.

### FM antenna

The wire antenna supplied can only be used to receive nearby stations. For better reception we recommend using a cable antenna system or an outdoor antenna.

- 1 Extend the wire antenna and fit it to FM ANTENNA as shown below



**Note:** If you are using a cable antenna system or an outdoor antenna, fit the antenna plug, instead of the wire antenna, to FM ANTENNA .

- 2 Move the antenna in different positions for optimal reception (as far away as possible from the TV,VCR or other radiation sources)
- 3 Fix the antenna's end to the wall.


### Helpful hints:

– To receive optimal radio reception, put the main unit and the antennas as far away as possible from the power adaptor.

### Connecting an additional appliance

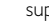
#### Connecting a USB device or memory card

By connecting a USB mass storage device (including USB flash memory, USB flash players or memory cards) to the Hi-Fi system, you can enjoy the music stored on the external device through the powerful speakers of Hi-Fi system.

- 1 Insert the USB device's USB plug into the socket  on the front panel of the main set.


**Or,**

#### for the devices with USB cable:

- a. Insert one plug of the USB cable (not supplied) to the socket  on the front panel of the main set.
- b. Insert the other plug of the USB cable to the USB output terminal of the USB device.

**Or,**

#### for the memory card:

- a. Insert the memory card into a card reader (not supplied).
- b. Use a USB cable (not supplied) to connect the card reader to the socket  on the front panel of the main set.

## Installation

### Connecting a non-USB device

It is possible to use an additional appliance, e.g. TV, VCR or CD recorder with the set. On MCM239D, you can playback music from an external source.

- 1 Insert one plug of the audio cable (not supplied) to the socket **AUX IN** at the rear panel of the main set.
- 2 Connect the other end of the audio cable to the **AUDIO OUT** terminal of the additional appliance.
- 3 Select **AUX** mode on the set.

#### Helpful hints:

- Always refer to the owner's manual of other equipment for complete connection.

### Using AC power

- 1 Make sure all the connections have been made before switching on the power supply
- 2 Connect the supplied AC/DC power adaptor to the DC jack (located on the rear panel of the main set) and to the wall socket. This switches on the power supply.

**To avoid damage to the set, use only the adaptor supplied.**

When MCM239D is switched to standby, it is still consuming some power. **To disconnect the system from the power supply completely, remove the power plug from the wall socket.**

**The type plate is located on the rear of the set.**

#### Warning!

**To avoid overheating of the system, a safety circuit has been built in. Therefore, your system may switch to Standby mode automatically under extreme conditions. If this happens, let the system cool down before reusing it (not available for all versions).**

### CAUTION

**Visible and invisible laser radiation. If the cover is open, do not look at the beam.**

**High voltage! Do not open. You run the risk of getting an electric shock.**

**The machine does not contain any user-serviceable parts.**

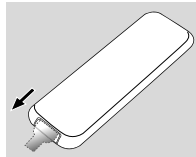
**Modification of the product could result in hazardous radiation of EMC or other unsafe operation.**

## Preparation

### Using the remote control

#### IMPORTANT!

- Remove the protective plastic tab before using the remote control.
- Always point the remote control directly towards IR area on the Center or Station you wish to operate.

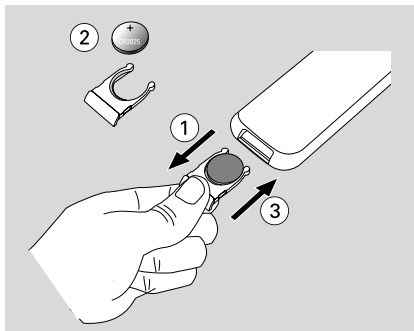


#### Notes for remote control:

- First select the source you wish to control by pressing one of the source select keys on the remote control (for example CD, TUNER).
- Then select the desired function (for example **▶ II**, **◀▶**).

#### To replace the remote controls' battery

- 1 Push to open the battery tray.
- 2 Replace a new battery according to the indicated polarity.
- 3 Push the battery tray back to close it.



#### CAUTION!

- Remove the battery if it is exhausted or will not be used for a long time.
- Batteries contain chemical substances, so they should be disposed of properly.

### Setting the clock

After connecting MCM239D to the power supply, set the clock first.

- 1 Press and hold **STANDBY-ON** to switch the set to Standby mode.
  - The display shows the set time.
  - --:--:-- flashes by default if you have not set the clock.
- 2 In the standby mode, press and hold **DISPLAY/CLOCK**.
  - SET CLOCK scrolls on the display
  - 24 HR or 12 HR appears for the initial clock setting. **To select 24-hour clock or 12-hour clock,**
    - a. Press **VOLUME +/-**.
    - b. Press **CLOCK** to confirm
  - The hours digits start flashing
- 3 Hold down or press **VOLUME +/-** repeatedly to set the hours.
- 4 Press **DISPLAY/CLOCK** to confirm
  - The minutes digits start flashing
- 5 Hold down or press **VOLUME +/-** repeatedly to set the minutes.
- 6 Press **DISPLAY/CLOCK** to confirm
  - To exit without storing the clock setting press **STOP** ■

#### Helpful hints:

- The clock setting will be erased when the system is disconnected from the power supply.
- The set will exit from the clock setting mode if no button is pressed within 90 seconds.

## Basic Functions

### Switching on/off the set and selecting functions

- 1 To switch on, press **STANDBY-ON** or **SOURCE** on the set (or  $\odot$  on the remote control)
  - The set switches to the last source selected **OR**
  - On the remote control, press the source button (e.g. **USB, CD, TUNER, iPod, AUX**).
- 2 When the set is on, press **STANDBY-ON** to switch off (or  $\odot$  on the remote control).
- 3 To select your function, press **SOURCE** once or more on the set (or **USB, CD, TUNER, iPod, AUX** on the remote control).

#### Helpful hints:

- In the standby mode, the tone, sound settings, tuner presets and the volume level (up to a maximum volume level of 12) will be retained in the set's memory.

### Auto-standby

When the set has reached the end of CD playback and remains in the stop position for more than 15 minutes, the set will switch off automatically to save power.

### Volume control

#### Volume adjustment

- Adjust the volume by pressing **VOLUME +/-**.
  - **VOL** and the actual value (between 1 and 31) are displayed.
  - **VOL MIN** is the minimum volume level.
  - **VOL MAX** is the maximum volume level.

#### MUTE

You can temporarily switch off the sound without switching off the set.

- 1 Press **MUTE** to switch off the sound.
  - **MUTE** appears. Playback continues without sound.
- 2 To switch on the sound, you can:
  - press **MUTE** again;
  - adjust the volume controls;
  - change source.

### Sound control

#### DSC

Digital Sound Control enables you to select predefined sound settings.

- Press **DSC** repeatedly to select the desired sound setting: **ROCK, JAZZ, POP, CLASSIC, OPTIMAL**.

#### DBB

- Press **DBB** (**D**ynamic **B**ass **B**oost) once or more to switch bass enhancement on or off.
  - **DBB** appears if **DBB** is activated

### Displaying the clock

- During playback, press **DISPLAY/CLOCK** on the remote control repeatedly to switch between the clock display and the playback display.

#### Notes:

- When playing MP3 files, you will get track information (ID3 tag) by pressing **DISPLAY/CLOCK**.

### Discs for playback

- With this system, you can play
- all pre-recorded audio CDs (CDDA)
  - all finalized audio CD-Rs and CD-RWs
  - MP3/WMA-CDs (CD-Rs/CD-RWs with MP3/WMA files)



### IMPORTANT!

- **This system is designed for regular discs. Therefore, do not use any accessories such as disc stabilizer rings or disc treatment sheets, etc.**

### About MP3/WMA

The music compression technology MP3 (MPEG1 Audio Layer 3) and WMA (Windows Media Audio) significantly reduces the digital data of an audio CD while maintaining CD quality sound.

**Windows Media Audio® is a registered trademark of Microsoft Corporation.**

### Supported formats:

- Disc format ISO9660, Joliet, UDF (created on Adaptec Direct CD) and multi-session CDs
- MP3 bit rate (data rate): 32-320 Kbps and variable bit rate
- Directory nesting up to a maximum of 8 levels
- Max. track number plus album: 500
- WMA v9 or earlier

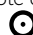
### The system will not play or support the following:

- Empty albums: an empty album is an album that does not contain MP3/WMA files, and will not be shown in the display.
- Non-supported file formats are skipped. This means that e.g.: Word documents .doc or MP3 files with extension .dlf are ignored and will not be played.
- DRM protected WMA files
- WMA files in Lossless or VBR format

### IMPORTANT!

- Make sure that the file names of MP3 files end with .mp3.
- For DRM protected WMA files, use Windows Media Player 10 (or later) for CD burning/ conversion. Visit [www.microsoft.com](http://www.microsoft.com) for details about Windows Media Player and WM DRM (Windows Media Digital Rights Management).

### Playing discs

- 1 Press **SOURCE** once or more to select **CD** (or **CD** on the remote control)  
→ The CD icon  appears
- 2 Press **DOOR OPEN** to open the CD door.  
→ **CD OPEN** is displayed.
- 3 Insert a disc with the printed side facing up. Then close the CD door.  
→ **RETRIEVING** is displayed as the CD player scans the contents of a disc  
→ **Audio CD**: the total number of tracks and playing time are shown  
**MP3/WMA**: Display shows current album number "A x x" and current track number "T x xx".

### Helpful hints:

- If you have not organized MP3/WMA files into any albums on your disc, an album "00" will be automatically assigned for all those files.

- 4 Press **▶ II** to start playback.  
→ Display shows current track number and elapsed playing time.
- 5 To pause playback, press **▶ II**. To resume playback, press the button again.
- 6 To stop playback, press **STOP ■**

### Helpful hints:

- CD play will also stop when
- the CD door is opened.
  - the disc has reached the end.
  - you select another source: **TUNER, USB, iPod** or **AUX**.

## CD

### Selecting and searching

#### Selecting a different track

- Press **I◀◀ / ▶▶I** once or repeatedly until the desired track number appears in the display.  
**MP3/WMA:** → Track information scrolls briefly.

#### MP3/WMA:

- Press **ALBUM/ PRESET** once or more to select the next or previous album.  
 → Album information scrolls briefly.
- or**
- In the stop position, press **ALBUM/ PRESET** and **I◀◀ / ▶▶I** to select the desired album and track.  
 → **MP3/WMA:** Display shows current album/ track number.

#### Finding a passage within a track during playback

- 1 During playback, press and hold **I◀◀ / ▶▶I**  
 → The CD plays at a high speed.
- 2 When you recognize the passage you want, release **I◀◀** or **▶▶I**.  
 → Normal playback resumes.

### Programming tracks

You may store up to 20 tracks in the desired sequence. If you like, store any track more than once.

- 1 In the stop position, press **PROGRAM** to start programming.  
 → **PRPG** flashes.
- 2 Press **I◀◀ / ▶▶I** once or repeatedly until the desired track number appears in the display.
- **MP3/WMA:** press **ALBUM/ PRESET** and **I◀◀ / ▶▶I** to select the desired album and track.
- 3 Press **PROGRAM** to confirm.  
 → Display shows briefly the number of tracks programmed.  
 → Then, the display shows the track number you just stored.
- 4 Repeat steps 2-3 to select and store all desired tracks.  
 → **FULL** is displayed if you attempt to program more than 20 tracks.
- 5 Press **▶ II** play the program.

#### Helpful hints:

- The set will return to the stop position if no button is pressed within 90 seconds. To resume programming, press **PROGRAM**.
- **MP3/WMA:** When playing a program, use of **ALBUM/ PRESET** are void.

### Erasing the program

You can erase the contents of the memory by:

- Press **STOP ■**
  - once if in the stop position;
  - twice during playback;
- Press **STANDBY-ON**.
- Select another sound source.
- Open the CD door:  
 → **PRPG** disappears.





## CD

English

### Different play modes: REPEAT, SHUFFLE

*REP TRACK* – plays the current track continuously.

*REP ALL* – plays the entire disc/program continuously.

*SHUF* – plays all the tracks in random order.

- 1 During playback, press once or more **REPEAT** or **SHUFFLE** to select play modes.
- 2 To return to normal playback, press **REPEAT** or **SHUFFLE** repeatedly until the various modes are no longer displayed.

#### Helpful hints:

– In the shuffle mode, press **▶|** to select tracks.

### Display track information (MP3/WMA only)

The ID3 tag is part of an MP3/WMA file and contains various track information such as the track's title or the artist's name.

- During playback, press **DISPLAY/CLOCK** repeatedly on the remote control.  
→ Display show title name, album name and ID3 tag information.



#### Helpful hints:

– **Complete the ID3 tag information with your MP3/WMA encoder software before burning the MP3/WMA-CD.**



## Tuner

### Tuning to radio stations

- 1 Press **SOURCE** once or more to select **TUNER** (or **TUNER** on the remote control).
- 2 Press **TUNER** on the remote control repeatedly to select your desired waveband, FM or MW.
  - Display shows: , radio station frequency, waveband and if programmed, a preset number.
- 3 Press and hold **◀◀ / ▶▶** until **SEARCH** appears.
  - The radio automatically tunes to a station with sufficient reception. Display shows **SEARCH** during automatic tuning.
  - **FM**: If a station is received in stereo,  is shown.
- 4 Repeat step 3 if necessary until you find the desired station.
- To tune to a weak station, press **◀◀ / ▶▶** briefly and repeatedly until you have found optimal reception.

### Programming radio stations

You can store up to a total of 40 radio stations (FM and MW) in the memory, manually or automatically (Autostore).

#### Autostore: Automatic programming

Automatic programming will start from preset 1 or a chosen preset number. From this preset number upwards, former programmed tuner stations will be erased. The set will only program stations which are not in the memory already.

- 1 Press the **ALBUM/ PRESET** buttons once or more to select the preset number where programming should start.

#### Note:

– If no tuner preset number is selected, default is preset 1 and all your presets will be erased.

- 2 Press and hold **PROGRAM** until **AUTO** appears.
  - **PROG** flashes.
  - Available stations are programmed in order of waveband reception strength: FM followed by MW.
  - After all stations are stored, the first preset station will then be played.

### Manual programming

- 1 Tune to your desired station (see **Tuning to radio stations**).
- 2 Press **PROGRAM** to activate programming.
  - **PROG** flashes.
- 3 Press **ALBUM/ PRESET** to allocate a number from 1 to 40 to this station.
- 4 Press **PROGRAM** to confirm.
  - Display shows the preset number, waveband and the frequency of the preset station.
- 5 Repeat steps 1-4 to store other stations.
- You can erase a preset station by storing another frequency in its place.

### To listen to a preset station

- Press the **ALBUM/ PRESET** buttons once or more until the desired preset station is displayed.

## USB

English

### Using a USB mass storage device

By connecting a USB mass storage device to the Hi-Fi system, you can enjoy the music stored on the external device through the powerful speakers of Hi-Fi system.

#### Playing a USB mass storage device

##### Compatible USB mass storage devices

With the Hi-Fi system, you can use

- USB flash memory (USB 2.0 or USB1.1)
- USB flash players (USB 2.0 or USB1.1)
- memory cards (requires an additional card reader to work with this Hi-Fi system)

##### Note:

- In some USB flash players (or memory devices), the stored contents are recorded using copyright protection technology. Such protected contents will be unplayable on any other devices (such as this Hi-Fi system).

##### Supported formats:

- USB or memory file format FAT12, FAT16, FAT32 (sector size: 512 - 65,536 bytes)
- MP3 bit rate (data rate): 32-320 Kbps and variable bit rate
- WMA v9 or earlier
- Directory nesting up to a maximum of 8 levels
- Number of albums/ folders: maximum 50
- Number of tracks/titles: maximum 500
- ID3 tag v2.0 or later
- File name in Unicode UTF8 (maximum length: 128 bytes)

##### The system will not play or support the following:

- Empty albums: an empty album is an album that does not contain MP3/WMA files, and will not be shown in the display.
- Non-supported file formats are skipped. This means that e.g.: Word documents .doc or MP3 files with extension .dlf are ignored and will not be played.
- AAC, WAV, PCM audio files
- DRM protected WMA files
- WMA files in Lossless format

### How to transfer music files from PC to a USB mass storage device

By dragging and dropping music files, you can easily transfer your favorite music from PC to a USB mass storage device.

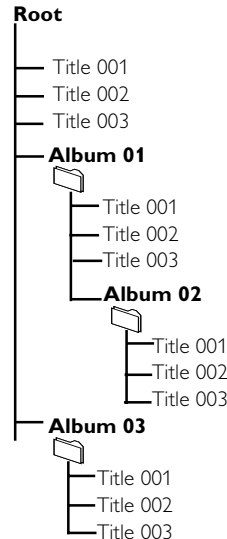
For the flash player, you can also use its music management software for the music transfer:

**However, those WMA files may be unplayable for compatibility reasons.**

### How to organize your MP3/WMA files on the USB mass storage device

This Hi-Fi system will browse the MP3/WMA files in the folders/sub-folders/titles order.

Example:




Organize your MP3/WMA files in different folders or subfolders as required.

##### Note:

- If you have not organized MP3/WMA files into any albums on your disc, an album "00" will be automatically assigned for all those files.
- Make sure that the file names of MP3 files end with .mp3. and the file names of WMA files end with .wma.
- For DRM protected WMA files, use Windows Media Player 10 (or later) for conversion. Visit [www.microsoft.com](http://www.microsoft.com) for details about Windows Media Player and WM DRM (Windows Media Digital Rights Management).

## USB

- 1 Check the USB device has been properly connected. (See **Installation: Connecting an additional appliance**)
- 2 Press **SOURCE** once or more to select **USB** (or **USB** on the remote control)
  - The icon  appears
  - **NO AUDIO** appears if no audio file is found in the USB device
- 3 Play the USB's audio files as you do with the albums/tracks on a CD (See **CD**)

### Note:

- For compatibility reasons, the album/track information may differ from what it is displayed through flash players' music management software.
- File names or ID3 tags will be displayed as ---- if they are not in English.

### INFORMATION REGARDING USB DIRECT:

#### 1. Compatibility of the USB connection on this micro system:

- a) This micro system supports most USB Mass storage devices (MSD) that these devices are compliant to the USB MSD standards.
  - i) Most common Mass storage class devices are flash drives, memory sticks, jump drives and etc.
  - ii) If you see a "Disc Drive" showing up on your computer after you have plugged the mass storage device into your computer, most likely it is MSD compliant and it will work with this micro system.
- b) If your Mass storage device requires a battery/ power source, please make sure you have a fresh battery in it or charge the USB device first and then plug it into the micro system again.

#### 2) Supported Music type:

- a) This device only supports unprotected music with file extension: .mp3 .wma
- b) Music bought from on-line music stores are not supported because they are secured by Digital Rights Management protection (DRM).
- c) File name extensions that ended with the following are not supported: .wav; .m4a; .m4p; .mp4; .aac and etc.

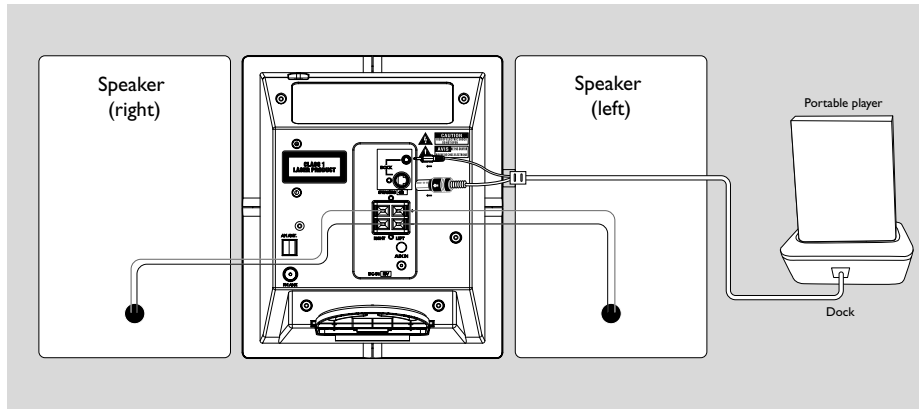
#### 3) No Direct connection can be made from a Computer USB port to the micro system even you have either or both mp3 or wma file in your -computer.

## AUX

### AUX (Listening to an external source)

You can listen to the sound of the connected external device through your MCM239D.

- 1 Check the external device has been properly connected (See **Installation, Connecting an additional appliance**)
- 2 Press **SOURCE** once or more to select **AUX** (or **AUX** on the remote control)
- 3 To avoid noise distortion, turn down the volume on your external device
- 4 Press the **PLAY** key on the connected device to start playback
- 5 To adjust the sound and volume, use the sound controls on your external device and the MCM239D.



### Playing iPod using the dock

By connecting the supplied dock to your Hi-Fi system, you can listen to the sound of the docked player through the powerful speakers of the Hi-Fi system.

### Compatible portable player

- Most Apple iPod models with 30-pin dock connector as follows:  
20GB, 40GB, 20/30GB photo, 40/60GB photo, 30GB video, 60GB video, mini and nano.

### Dock

This system comes with a dock used for iPod. Connect the cable of the dock to the system to let the system and your iPod work together.

### Dock adaptor

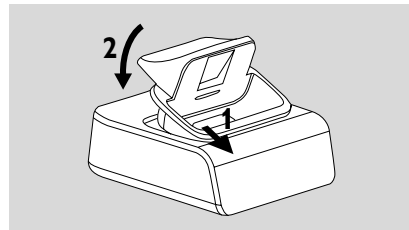
Before plugging your player in the dock, snap the suitable dock adaptor into the dock to provide a snug fit for the player to be docked.

### Selecting the correct dock adaptor

- For the iPod dock, 8 dock adaptors of different type, as indicated at the back of the adaptor, are included to fit the following iPod:  
20GB, 40GB, 20/30GB photo, 40/60GB photo, 30GB video, 60GB video, mini and nano.

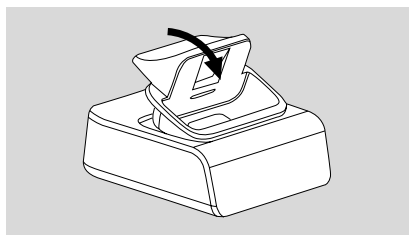
### Installing the dock adaptor

- 1 Align two latches of the adaptor and two holes of the dock, then gently push in the adaptor until it clicks.



### Removing the dock adaptor

- Slightly push down the dock adaptor; as indicated in the figure below, to un-latch the adaptor; then take it out.



## iPod

### Playing iPod

- 1 Select the dock adaptor of the correct type and size, and snap it into the dock (See "**Dock adaptor**").
  - 2 Correctly place your iPod in the dock.
  - 3 Connect the cables of the dock to DOCK IN jacks on the main set correspondingly.
  - 4 Press **SOURCE** repeatedly or **iPod** to select iPod source.
- The connected player will play automatically.

#### Notes:

- By using the buttons (▶||, ◀◀, ▶▶ and **VOLUME**) on the MCM239D and its remote control, the following disc playback features are available: Play/Pause, selecting next/previous track, fast forwarding/rewinding and changing volume.
- The buttons (▶||, ◀◀, ▶▶ and **VOLUME**) on the MCM239D and its remote control can work only with playback of the audio contents stored on the docked player.
- Stop (■) function of disc playback is not available to the docked player.
- To navigate the iPod menu, you may use **MENU**, ▲▼ and **OK** buttons on the MCM239D's remote control.

### Charging iPod battery using the dock

Docking your iPod and connecting the dock to MCM239D, you can charge the iPod in the standby mode and power-on mode of MCM239D.




## Timer

## SLEEP

English

### Setting the timer

The set can be used as an alarm clock, whereby the selected source (CD, TUNER or USB) starts playback at a preset time. **Make sure the clock is set before using the timer.**

- 1 In standby mode, press and hold **TIMER** on the remote control until **SET TIMER** appears.
  -  flashes. **SELECT SOURCE** scrolls.
  - Display shows current source **CD**, **TUNER** or **USB**.
- 2 Press **SOURCE** on the set repeatedly to select the source (or press **CD**, **TUNER** or **USB** on the remote control).
- 3 Press **TIMER** to confirm.
  - The hours digits start flashing.
- 4 Hold down or press **VOLUME +/-** repeatedly to set the hours.
- 5 Press **TIMER** to confirm.
  - The minutes digits start flashing.
- 6 Hold down or press **VOLUME +/-** repeatedly to set the minutes.
- 7 Press **TIMER** to confirm.
  - The timer is now set and activated.
  - At the set alarm time, the CD, TUNER or USB will switch on (volume level: max. 13).

#### Note:

- The set will exit from the timer setting mode if no button is pressed within 90 seconds.

### Activating and deactivating TIMER

- In standby mode, press **TIMER** on the remote once or more to activate or deactivate the timer.
  - If activated, the last set source and start time are displayed.
  - If deactivated, "TIMER OFF" appears.

#### Helpful hints:

##### The timer will not work at the set time if

- the set is switched on
- the timer is deactivated

##### The set will switch to Tuner source automatically if :

- no CD is inserted when the selected source is CD;
- no USB device is connected when the selected source is USB

## SLEEP


You can set a certain period of time after which the set will switch off.

- During playback, on the remote control, press **SLEEP** repeatedly to select the desired time period options (in minutes):
  - Display shows in sequence: **Sleep 90, 75, 60, 45, 30, 15, 00**
  - Display shows the selected option briefly and returns to its previous status. The icon **zzZ** appears.

To deactivate the sleep timer, press repeatedly **SLEEP** until **00** appears.

- The icon **zzZ** disappears.

#### or

Press **STANDBY-ON** to switch off the set (or  on the remote control)

#### Helpful hints:

- The SLEEP function does not affect your alarm time setting.



## Specifications

### AMPLIFIER

Output power ..... 2 x 5 W RMS  
 Signal-to-noise ratio .....  $\geq 65$  dBA  
 Frequency response ..... 100 – 18kHz,  $\pm 3$  dB  
 Input sensitivity AUX ..... 0.5 V (max. 1 V)  
 Impedance loudspeakers .....  $\geq 4 \Omega$   
 Impedance headphones .....  $32 \Omega$  -1000  $\Omega$   
 ..... <15mW

### CD PLAYER

Frequency range ..... 100 – 18kHz  
 Signal-to-noise ratio ..... 65 dBA

### TUNER

FM wave range ..... 87.5 – 108 MHz  
 MW wave range ..... 531 – 1602 kHz  
 Number of presets ..... 40  
 Antenna  
 FM ..... 75  $\Omega$  wire  
 MW ..... Loop antenna

### USB PLAYER

USB ..... V2.0/V1.1  
 ..... support MP3 and WMA files  
 Number of albums/ folders ..... maximum 50  
 Number of tracks/titles ..... maximum 500

### SPEAKERS

Bass reflex system  
 Dimensions (w x h x d) .. 158 x 250x 118 (mm)

### GENERAL INFORMATION

AC Power ..... 100 – 240V, 50 /60 Hz  
 Dimensions (w x h x d, with/without the stand)  
 ..... 211 x 250 x 160/211 x 250 x 126 (mm)  
 Weight(with/without speakers) ..... 2.9 / 1.23 kg  
 Standby power consumption ..... <2 W

**Specifications and external appearance are subject to change without notice.**

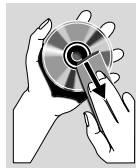
## Maintenance

### Cleaning the Cabinet

- Use a soft cloth slightly moistened with a mild detergent solution. Do not use a solution containing alcohol, spirits, ammonia or abrasives.

### Cleaning Discs

- When a disc becomes dirty, clean it with a cleaning cloth. Wipe the disc from the centre out.
- Do not use solvents such as benzene, thinner, commercially available cleaners, or antistatic spray intended for analogue records.



### Cleaning the disc lens

- After prolonged use, dirt or dust may accumulate at the disc lens. To ensure good playback quality, clean the disc lens with Philips CD Lens Cleaner or any commercially available cleaner. Follow the instructions supplied with cleaner.





## Troubleshooting

### WARNING

*Under no circumstances should you try to repair the system yourself, as this will invalidate the warranty. Do not open the system as there is a risk of electric shock.*

*If a fault occurs, first check the points listed below before taking the system for repair. If you are unable to remedy a problem by following these hints, consult your dealer or Philips for help.*

English

Problem	Solution
<b>"NO DISC" is displayed.</b>	<ul style="list-style-type: none"> <li>✓ Insert a disc.</li> <li>✓ Wait until the moisture condensation at the lens has cleared.</li> <li>✓ Replace or clean the disc, see "Maintenance".</li> <li>✓ Use a finalised CD-RW or a correct MP3/WMA-CD format disc.</li> </ul>
<b>Some files on the USB device are not displayed.</b>	<ul style="list-style-type: none"> <li>✓ Check if the number of folders exceeds 99 or the number of titles exceeds 999</li> </ul>
<b>Radio reception is poor.</b>	<ul style="list-style-type: none"> <li>✓ If the signal is too weak, adjust the antenna or connect an external antenna for better reception.</li> <li>✓ Increase the distance between the Micro HiFi System and your TV or VCR.</li> </ul>
<b>The system does not react when buttons are pressed.</b>	<ul style="list-style-type: none"> <li>✓ Remove and reconnect the AC power plug and switch on the system again.</li> </ul>
<b>Sound cannot be heard or is of poor quality.</b>	<ul style="list-style-type: none"> <li>✓ Adjust the volume.</li> <li>✓ Disconnect the headphones.</li> <li>✓ Check that the speakers are connected correctly.</li> <li>✓ Check if the stripped speaker wire is clamped.</li> <li>✓ Make sure the MP3-CD was recorded within 32~256 kbps bit rate with sampling frequencies at 48 kHz, 44.1 kHz or 32 kHz.</li> </ul>
<b>The left and right sound outputs are reversed.</b>	<ul style="list-style-type: none"> <li>✓ Check the speaker connections and location.</li> </ul>

## Troubleshooting

**The remote control does not function properly.**

- ✓ Select the source (CD or TUNER, for example) before pressing the function button (▶||, ◀, ▶|).
- ✓ Reduce the distance between the remote control and the system.
- ✓ Insert the battery with its polarities (+/- signs) aligned as indicated.
- ✓ Replace the battery.
- ✓ Point the remote control directly toward IR sensor on the front of the system.

**The timer is not working.**

- ✓ Check the set is switched off
- ✓ Set the clock correctly.
- ✓ Press TIMER to switch on the timer.

**The Clock/Timer setting is erased.**

- ✓ Power has been interrupted or the power cord has been disconnected. Reset the clock/timer.

**The USB device doesn't play on my MCM239D.**

- ✓ It is not set in the USB mode. Select USB mode.
- ✓ The device is not securely connected to MCM239D's USB port. Re-connect the device, and make sure that the device is powered on.
- ✓ The device is not supported by MCM239D, or the audio file format stored on the device is not supported by MCM239D. Use a compatible device/ playable audio file format.

**The STOP ■ and some buttons on MCM239D and its remote control have no function.**

- ✓ The playback of the docked player cannot be stopped using the **STOP ■** button on MCM239D and its remote control.
- ✓ The buttons (▶||, ◀, ▶| and **VOLUME**) can function only. *To navigate the iPod menu, you may use **MENU, ▲▼** and **OK** buttons.*



## AUSTRALIA - Philips Manufacturers Warranty for Australia only

**These warranty conditions are valid for the following consumer electronics products: Colour Televisions, Projection TV, Plasma & LCD TV, Video Cassette Recorders, CD Recorders & Players, DVD Players, DVD Recorders, DVD Recorders with HDD, Audio Systems, Home Theatre systems, Digital Set Top Box & Portable Audio products.**

**The benefits given to the purchaser by this warranty are in addition to all other rights and remedies which the purchaser has in respect of the product under the Trade Practices Act or other Commonwealth or State Law.**

Philips Consumer Electronics warrants its products to the purchaser as follows and subject to the stated conditions.

### **1 Year Free Repair Service - at Philips ASC**

Colour Television, Plasma Television, LCD Television, Projection Television, DVDR/VCR Combo, DVD Recorders with Hard Drive, LCD Projectors, Wireless Audio Systems, Audio Systems, Home Theatre Systems & Digital Set-Top-Box.

### **1 Year Free Replacement – at your Retailer**

Portable Audio, MP3 Infotainment products, Video Cassette recorders, DVD Player, DVD/VCR Combo Player, DVD Recorder without HDD & Portable DVD/LCD players.

### **Conditions of Repair Warranty**

1. All claims for warranty service should be made to your nearest Philips Authorised Service Centre or the Philips Technology Care Centre. Reasonable evidence of date of purchase must be provided.
2. This warranty extends only to defects in material or workmanship occurring under normal use of the product when operated in accordance with the instructions.
3. If a replacement product is supplied under the repair policy it is warranted for the remainder of the warranty of the original purchased product only.
4. Home service is provided only within the normal service area of one of our recommended Authorised Service Centres (ASC). It will be provided for television receivers only with a screen side of 67cms or above (product includes CRT, LCD TV, PTV, and Plasma TV). Televisions with screen side less than 67cms and all other products types are to be taken or sent by the consumer to the workshop of your nearest Authorised Service Centre, at the Consumer's expense.
5. This Manufacturers Warranty is limited to 3 months for the above listed Consumer Electronics products if used in commercial applications.
6. Philips may, at its discretion choose to replace rather than repair any product covered by this warranty.
7. Product accessories are covered by the same warranty period. Please contact the Philips Technology Care Centre for free replacement of faulty accessories.

8. This Manufacturers Warranty is neither transferable nor valid in countries other than Australia.

### **This warranty does not cover:**

- a) Mileage or travel outside the normal service area covered by selected Authorised Service Centre.
- b) Service costs arising from failure to correctly adjust the controls of the product or to observe the instructions, or inspections that reveal that the product is in normal working order.
- c) Product failures caused by misuse, neglect, accidental breakage, transit damage, inexpert repairs or modification by un-authorized persons, external fires, lightning strikes, floods, vermin infestation or liquid spillage.
- d) Cleaning of video or audio heads.
- e) Inadequate receiving antennae.
- f) Replacement of worn or used batteries or other consumables.
- g) Consumer products used in commercial applications (This warranty is limited to 3 months only).
- h) Second hand products.

**The conditions contained in this warranty card replace and override the provision of the Philips World-Wide Guarantee for products purchased in Australia and used in Australia.**

Service is provided through more than 100 accredited Authorised Service Centres throughout Australia. For direct contact with the nearest recommended Authorised Service Centre in capital & regional cities/towns

### **Authorised Service Centre Network**

**1300 361 392**

Customer support is provided in Australia by our trained call centre staff. For assistance with product features and specifications, please call

### **Technology Care Centre**

**1300 363 391**

**Please record the following information for your records and keep in a safe place. We recommend retaining your purchase receipt to assist with any warranty claim.**

Model number:.....

Serial number:.....

Date of purchase:.....

Retailer:.....

### **Philips Consumer Electronics**

a division of **Philips Electronics Australia Limited**

ABN 24 008 445 743,  
Level 1, 65 Epping Road NORTH RYDE NSW 2113.

Warranty valid for all new products purchased after **1<sup>st</sup> January 2007**





## **NEW ZEALAND - Guarantee and Service for New Zealand**

---

Thank-you for purchasing this quality Philips product.

Philips New Zealand Ltd guarantees this product against defective components and faulty workmanship for a period of 12 months. Any defect in materials or workmanship occurring within 12 months from the date of purchase subject to the following conditions will be rectified free of charge by the retailer from whom this product was purchased.

### **Conditions**

- 1.** The product must have been purchased in New Zealand. As proof of purchase, retain the original sales docket indicating the date of purchase.
- 2.** The guarantee applies only to faults caused by defective components, or faulty workmanship on the part of the manufacturer.
- 3.** The guarantee does not cover failures caused by misuse, neglect, normal wear and tear, accidental breakage, use on the incorrect voltage, use contrary to operating instructions, or unauthorised modification to the product or repair by an unauthorised technician.
- 4.** Reasonable evidence (in the form of a sales docket) must be supplied to indicate that the product was purchased no more than 12 months prior to the date of your claim.
- 5.** In the event of a failure, Philips shall be under no liability for any injury, or any loss or damage caused to property or products other than the product under guarantee.

This guarantee does not prejudice your rights under common law and statute, and is in addition to the normal responsibilities of the retailer and Philips.

### **How to claim**

Should your Philips product fail within the guarantee period, please return it to the retailer from whom it was purchased. In most cases the retailer will be able to satisfactorily repair or replace the product.

However, should the retailer not be able to conclude the matter satisfactorily, or if you have other difficulties claiming under this guarantee, please contact

### **The Guarantee Controller**

**Philips New Zealand Ltd.**

✉ **P.O. Box 41.021**

**Auckland**

☎ **(09) 84 94 160**

fax ☎ **(09) 84 97 858**

