

Register your product and get support at  
[www.philips.com/welcome](http://www.philips.com/welcome)

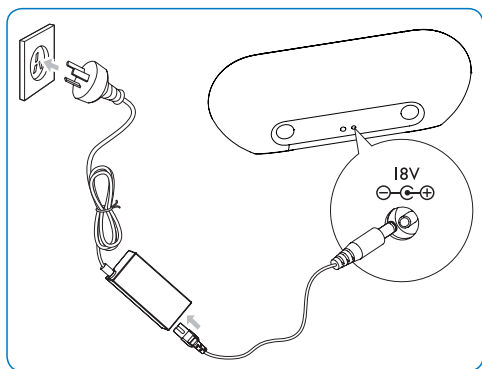
DS8550

# Quick Start Guide



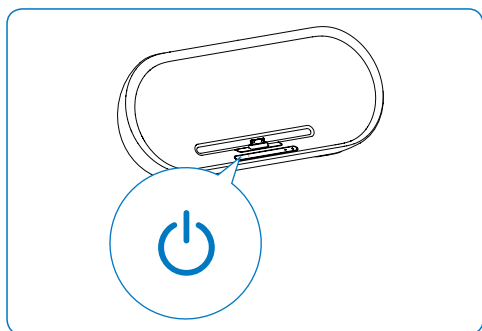
**PHILIPS**

## A Connect power



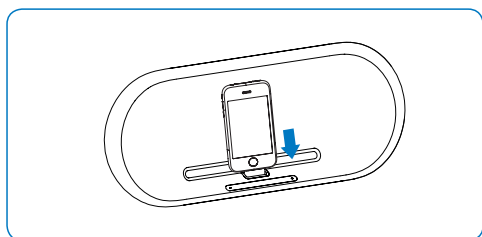
- 1 Insert the plug from the AC adaptor to the **DC IN** socket on the back of the main unit.
- 2 Connect one end of the AC power cord to the AC adaptor.
- 3 Connect the other end of the AC power cord to the wall outlet.


## B Turn on



- 1 Press  on the main unit.

## C Play from iPod/iPhone/iPad



- 1 Place the iPod/iPhone/iPad in the dock.
- 2 Press  on iPod/iPhone/iPad.

## **D** Play from Bluetooth device

- 1 Press **ⓧ** to turn on Bluetooth.
- 2 Turn on Bluetooth function on iPod/iPhone/iPad.
- 3 When “PHILIPS DS8550” displays, select it to start connection.
- 4 When prompted for a password, enter “0000”.
- 5 Press **▶||** on iPod/iPhone/iPad.
  - To turn off Bluetooth, press **ⓧ** again.

## **E** Play from an external device

- 1 Connect the supplied Aux-in link cable to:
  - the AUX IN jack (3.5mm) on the back of the unit.
  - the headphone jack on an external device.
- 2 Start to play the device (see the device user manual).

