

# Quick Start Guide

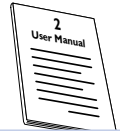


Step A *Setup*

Step B *Enjoy*

## What's in the Box?

You should find these items upon opening the box.



User manual



Remote Control



Pull out the insulation plastic sheet.



MW antenna



Quick Start Guide

# PHILIPS

# Step A

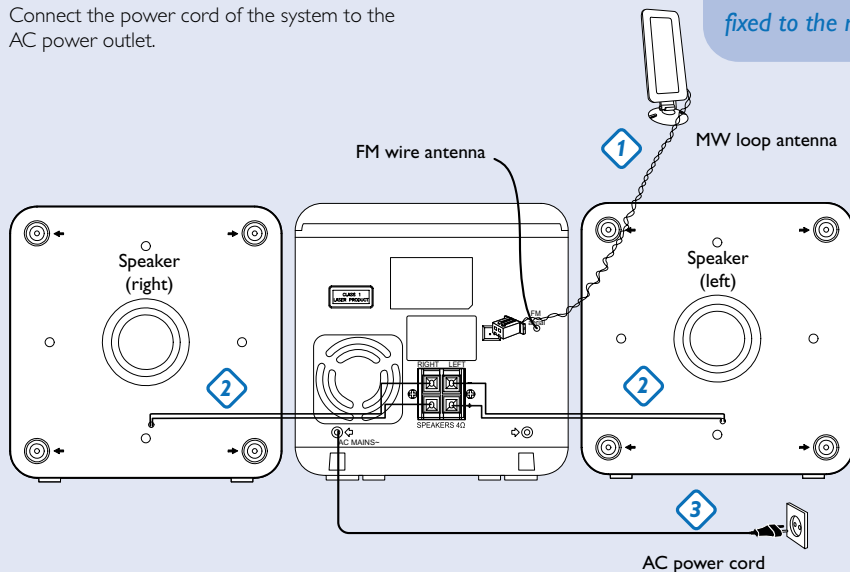
# Setup

## Connection

- 1** For radio reception, connect the supplied MW antenna to the **MW aerial** terminal.
- 2** Connect the speaker wires to the **SPEAKERS** terminals, marked red wire to "+", marked black wire to "-".
- 3** Connect the power cord of the system to the AC power outlet.

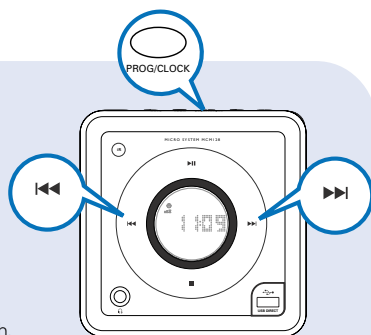
### Tip

*It is unnecessary to connect the FM pigtail antenna since it is fixed to the main unit.*



## Setting the clock

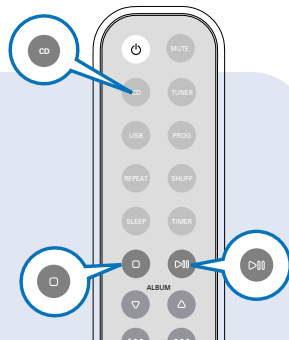
- 1** In standby mode, press **PROG/CLOCK** button. The clock digits for the hours flash.
- 2** Press **◀◀/▶▶** to set the hours.
- 3** Press **PROG/CLOCK** again. The clock digits for the minutes flash.
- 4** Press **◀◀/▶▶** to set the minutes.
- 5** Press **PROG/CLOCK** to confirm the time.



## Step B *Enjoy*

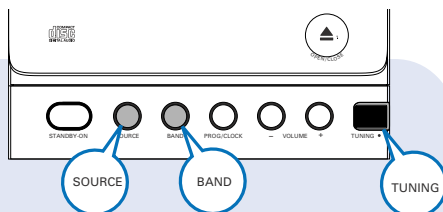
### Playing a disc

- 1 Select **CD** source.
- 2 Press **OPEN•CLOSE** on the top of the system to open the CD door.
- 3 Insert a disc with the printed side facing up and press down on **OPEN•CLOSE** to close the CD door.
- 4 Press **▶ ||** to start playback.
- 5 Press **■** to stop playback.



### Listening to radio

- 1 Select **TUNER** source.
- 2 Press **BAND** (**TUNER** on the remote control) to select your waveband.
- 3 Turn **TUNING** ● to tune to a station.




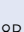
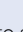
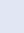
#### Tip

Detailed playback features and additional functions are described in the accompanied owner's manual.

#### Notes for the remote control:

- First, select the source you wish to control by pressing one of the source select keys on the remote control (DISC or AUX, for example).
- Then select the desired function (▶ ||, ◀, ▶ for example).

## Playing a USB mass storage device

- 1 Make sure that your MCM128B is being powered on.
- 2 Press **SOURCE** repeatedly (or **USB** on the remote) to enter USB mode.  
The LCD display shows - - with USB DIRECT.
- 3 Plug a compatible USB mass storage device to MCM128B's USB port marked  .  
If needed, use a suitable USB cable to connect between the device and MCM128's USB port.  
The device will automatically power on.
- 4 Press   on your MCM128B to start playback.
- 5 Press  to stop playback.

### Tip

Refer to the user manual supplied for the description about compatibility of USB mass storage device, and playability of the files stored on the USB device.

### Notes for USB usage:

- This micro system is able to support most USB mass storage devices on the current market.
- In case this micro system fails to identify your USB device, please unplug it and then plug it again. For USB devices designed with batteries, if the problem remains, please ensure sufficient power supply to your USB devices by replacing/recharging the batteries.
- You may not be able to play bought tracks in your USB device through this system, such as those bought from the Apple iTunes or Microsoft PlaysForSure websites!
- This micro system is designed for playback of digital music formats MP3 and WMA only and does not support WMA-DRM, AAC, WAV, M4a, M4b etc.
- Never try to connect this micro system with your PC through a USB cable to avoid any possible damage!

