

Always there to help you

Register your product and get support at

www.philips.com/welcome

HMP5020



User manual

PHILIPS

Trademark notice



HDMI, and HDMI logo and High-Definition Multimedia Interface are trademarks or registered trademarks of HDMI licensing LLC in the United States and other countries.



Manufactured under license from Dolby Laboratories.
"Dolby" and the double-D symbol are trademarks of Dolby Laboratories.



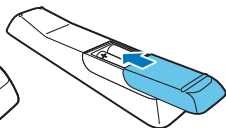
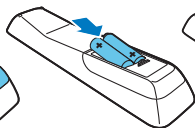
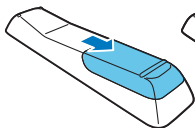
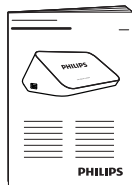
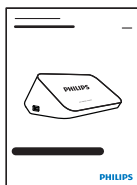
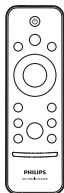
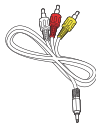
Manufactured under license under U.S. Patent #'s: 5,451,942; 5,956,674; 5,974,380; 5,978,762; 6,487,535 & other U.S. and worldwide patents issued & pending. DTS and the Symbol are registered trademarks, & DTS 2.0+ Digital Out and the DTS logos are trademarks of DTS, Inc. Product includes software. © DTS, Inc. All Rights Reserved.



The USB-IF Logos are trademarks of Universal Serial Bus Implementers Forum, Inc.

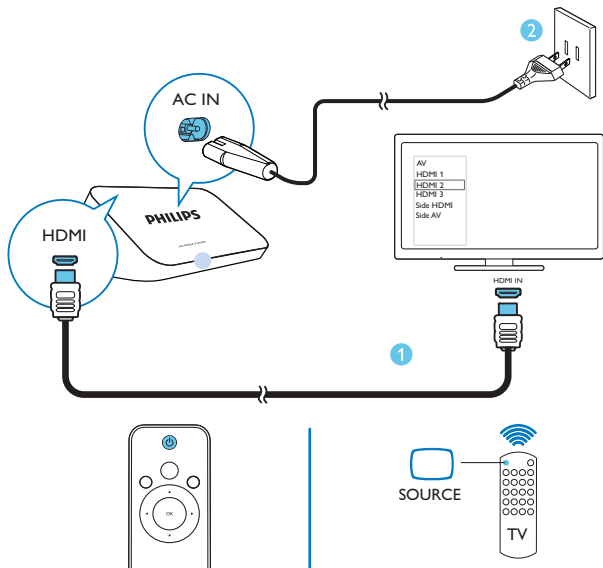


Real RMVB logo is a trademark or a registered trademark of RealNetworks, Inc.







开机 Switch on



中文 按  开机。白灯亮起。
再按  关机。红灯亮起

EN Press  to switch on. The indicator lights up white.
Press  again to switch off. The indicator lights up red.

中文 在电视机遥控器上，使用信号源键选择HMP5020的HDMI输入频道。

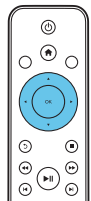
EN On the remote control of the TV, use the source button to select the HDMI input channel of HMP5020.



设置： 接入你的家庭网络

Setup: Connect to your home network

中文 通过Wi-Fi接入
EN Connect through Wi-Fi



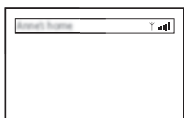
中文 在初始设置屏幕，选择**网络设置 > 无线 (Wi-Fi)**。选择**扫描无线网络**搜索范围内的网络。选择所需网络。按网络提示完成Wi-Fi连接。

EN On the screen of initial setup, select **Network Setup > Wireless (Wi-Fi)**. Select **Scan Wi-Fi** to search for networks in range. Select a network. Follow onscreen instructions to complete Wi-Fi connection.



中文 如果你选择**PBC**方式,将HMP5020加入你的路由器: 如在 路由器上按住PBC键 (查看你的路由器用户手册上的使用方式)。在HMP5020上,当连接完成时, 屏幕显示信息。

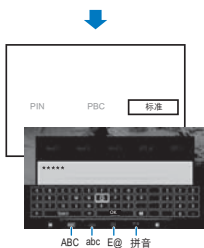
EN If you select **PBC**, add HMP5020 to the router: for example, press and hold the PBC button on the router (consult the user manual of your router for information). On HMP5020, a message is displayed when the connection is complete.





设置： 接入你的家庭网络

Setup: Connect to your home network

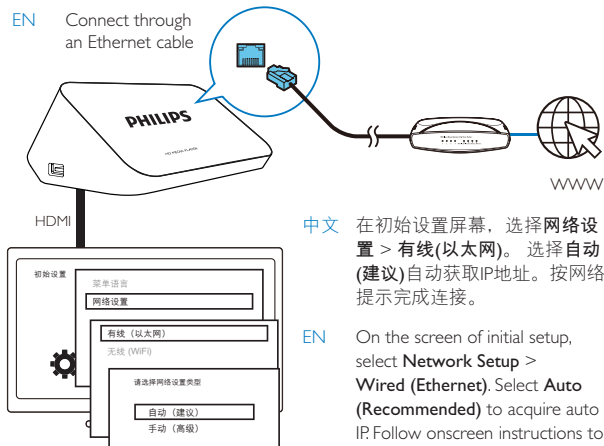


中文 如果你选择**标准**，输入密码。在遥控器上，按 **◀▶** 选择输入模式。输入文本时，按 **▲▼◀▶OK** 选择屏幕键盘上的按键。完成文本输入时，在屏幕键盘上选择 **OK**。

EN If you select **Standard**, enter your password. On the remote control, press **◀▶** to select an input mode. To enter text, press **▲▼◀▶OK** to select a key on the onscreen keyboard. To complete text entry, select **OK** on the onscreen keyboard.

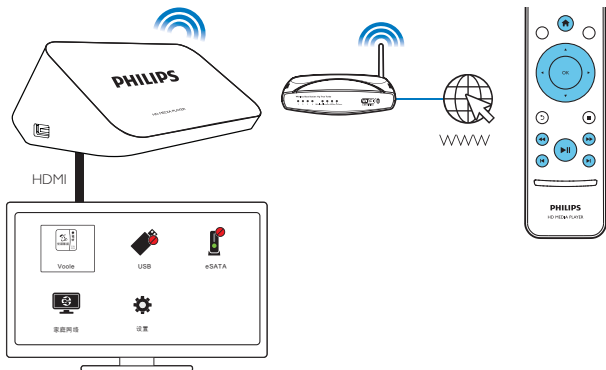
中文 通过以太网线接入

EN Connect through an Ethernet cable





中文 在初始设置屏幕，选择**网络设置 > 有线(以太网)**。选择**自动(建议)**自动获取IP地址。按网络提示完成连接。

EN On the screen of initial setup, select **Network Setup > Wired (Ethernet)**. Select **Auto (Recommended)** to acquire auto IP. Follow onscreen instructions to complete connection.



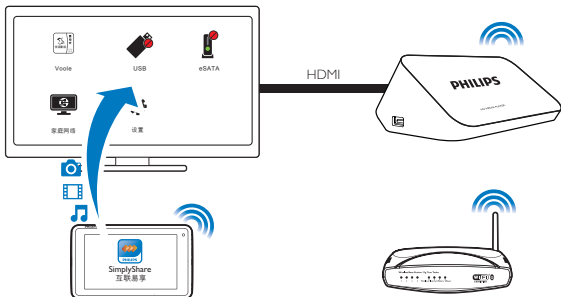
中文 再次开启HMP5020时，该机自动接入上次接入的网络。当HMP5020接入Wi-Fi无线网络时， 变为 。
从主屏幕上，选择**优朋影视**。使用遥控器选择搜索、播放选项。

EN Next time you switch on HMP5020, the device connects to the previously connected network.  changes to .
From the Home screen, select **Voole**. Use the remote control to select search and play options.



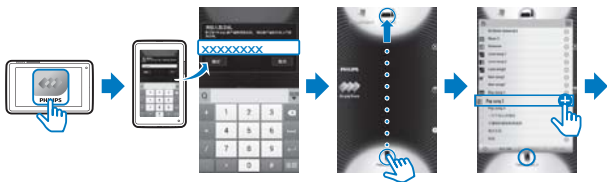
互联易享：播放飞利浦 安卓设备上的视频、照片

SimplyShare: Play from Philips
Android devices



中文 确定你已将飞利浦安卓设备接入HMP5020所在的同一网络。

EN Make sure that you have connected your Philips Android device to the same network as HMP5020.



中文 在你的飞利浦安卓设备上，启动。首次使用时，输入激活码。

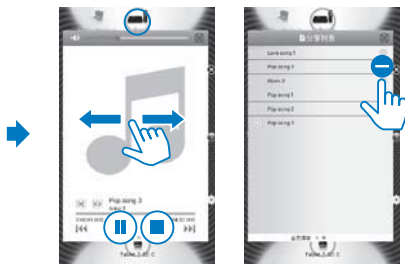
将你的飞利浦安卓设备拖入HMP5020。

选择你的飞利浦安卓设备。点击+加入通过HMP5020播放的媒体文件。

EN On your Philips Android device, launch . Enter the activation code for your first-time use.

Drag your Philips Android device to HMP5020.

Select your Philips Android device. Tap + to add media that you want to play through HMP5020.



中文 在飞利浦安卓设备上操控媒体播放时，选定该安卓设备。左、右滑动选择播放控制屏幕或播放列表（选定的媒体文件）

EN To control media play on the Philips Android device, select the Android device. Swipe left/ right to switch between the playback controls panel and the playlist of selected media files.

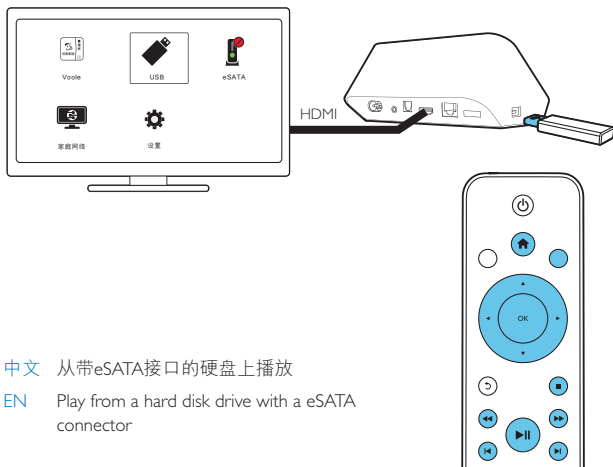


从存储设备上播放

Play from a mass storage device

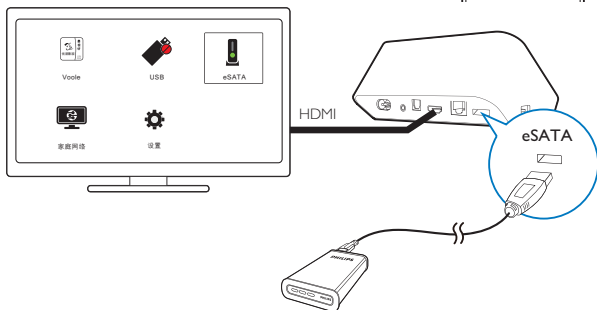
中文 从USB存储设备上播放

EN Play from a USB mass storage device



中文 从带eSATA接口的硬盘上播放

EN Play from a hard disk drive with a eSATA connector



Contents

1	Safety and notice	13
	Safety	13
	Compliance	14
	Copyright	15
	Warranty	15

2	Basics	16
	Connect	16
	Switch on or off	17
	Use the remote control	18

3	First-time setup	20
	Connect to your home network	20

4	Play	24
	Play from online services	25
	Play from your home network	26
	Play from a mass storage device	30

5	Setup	34
	System	35
	Audio	35
	Video	35
	Network	36

6 EasyLink	36
-------------------	----

7 Update the firmware of HMP5020	37
Update the firmware through the Internet	37
Update the firmware through a USB storage device	38

8 Troubleshooting	38
--------------------------	----

9 Specification	39
------------------------	----

1 Safety and notice

Read and understand all instructions before you use this product. If damage is caused by failure to follow the instructions, the warranty does not apply.

Safety



This 'bolt of lightning' indicates uninsulated material within the device may cause an electrical shock. For the safety of everyone in your household, please do not remove the covering.



The 'exclamation mark' calls attention to features for which you should read the enclosed literature closely to prevent operating and maintenance problems.

WARNING: To reduce the risk of fire or electric shock, the device should not be exposed to rain or moisture and objects filled with liquids, such as vases, should not be placed on the device.

CAUTION: To prevent electric shock, fully insert the plug. (For regions with polarized plugs: To prevent electric shock, match wide blade to wide slot.)

Only use attachments/accessories specified by the manufacturer.

The product shall not be exposed to dripping or splashing.

Do not place any sources of danger on the product (e.g. liquid filled objects, lighted candles).

Modification of the product could result in hazardous radiation of EMC or other unsafe operation.



Warning

- Never remove the casing of this product.
- Never lubricate any part of this product.
- Never place this product on other electrical equipment.
- Keep this product away from direct sunlight, naked flames or heat.
- Ensure that you always have easy access to the power cord, plug or adaptor to disconnect the product from the power.
- Where the mains plug or an appliance coupler is used as the disconnect device, the disconnect device shall remain readily operable.

Compliance

Class II equipment symbol:



CLASS II apparatus with double insulation, and no protective earth provided.

- Use this product in the areas of an altitude of no more than 2000 meters only.



Note

- The type plate is located on the bottom of the product.

Copyright



Be responsible
Respect copyrights

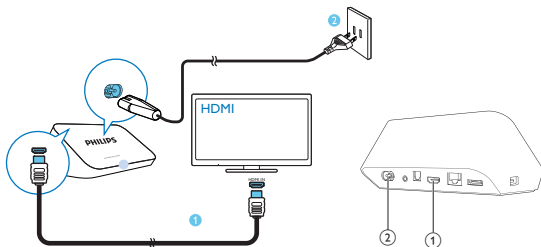
Specifications are subject to change without notice. Trademarks are the property of Koninklijke Philips Electronics N.V or their respective owners. Philips reserves the right to change products at any time without being obliged to adjust earlier supplies accordingly.

Warranty

- Never attempt to repair the product, this could lead to the risk of injury, damage to the product and will void your warranty.
- Use the product and accessories only as intended by the manufacturer. The caution sign printed on the back of the product indicates risk of electric shock.
- Never remove the cover of the product. Always contact Philips Customer Support for service or repairs.
- Any operation expressly prohibited in this manual, or any adjustments and assembly procedures not recommended or authorized in this manual shall void the warranty.

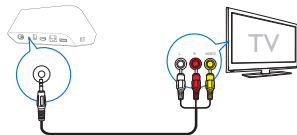
2 Basics

Connect



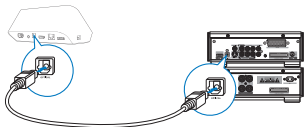
- ① **HDMI connector for audio/ video output**
 - Connects to a high-definition TV (HDTV) through an HDMI cable
- ② **Power connector**
 - Connects to power supply through the AC power cord

To connect to a TV through AV cables




- Through **AV**, use the supplied AV cable to connect **HMP5020** to a TV.
- Make sure that the plugs and sockets match in color.

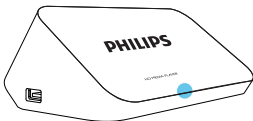
For high quality audio



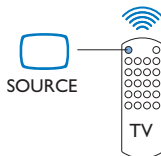
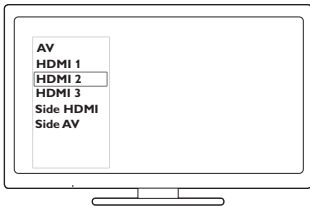
- Through **OPTICAL**, use a fiber optical cable to connect **HMP5020** to the **OPTICAL** or **SPDIF** input connector on an audio/video system.


Switch on or off

- 1 On **HMP5020**, press  on the remote control to switch on.
↳ The power indicator lights up white.



- 2 On the TV, switch to the input source of **HMP5020**:
 - On the remote control of your TV, use the source button to select the input channel of **HMP5020**.



- 3 To switch **HMP5020** to standby mode, press  again on the remote control.
↳ The power indicator lights up red.
-

Auto standby

From the Home screen, switch on **[Automatic Standby]** in **[Setup] > [System]**.
If there is no button press or media play on **HMP5020** for 15 minutes, **HMP5020** switches to standby mode automatically.

Screen saver

From the Home screen, go to **[Setup] > [System]** to switch on **[Screen Saver Delay]**

If there is no button press or media play on **HMP5020** for a selected time duration, the screen saver is activated. To exit the screen saver, press any button on the remote control.

Use the remote control

Switch **HMP5020** on or to standby mode

- Press 

Navigate between screens or through options



- Return to the Home screen
- Navigate through options

OK

- Confirm the option



- Back one level or exit (except in some online services)

View options menu for media play or file navigation

- Press  **OPTIONS**

Control the play



- Start, pause, or resume the play



- Stop the play



- Skip to the previous/ next media file



- Search backwards or forwards within current file
- Press repeatedly to select a search speed



- Rotate a photo



- Display the information about current file during play



- Press repeatedly to select aspect ratio, or zoom in or out. To pan through an enlarged photo, press ▲ ▼ ◀ ▶.

SUBTITLE

- Access subtitle options

Remove the connected USB device safely

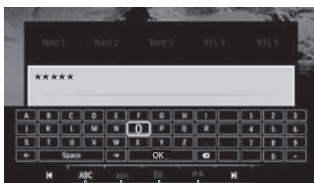
- Press and hold ■ and select the option

Manage files/folders underon the connected storage devices

- Press EDIT

Enter text

With the onscreen keyboard, use the remote control to enter text.



ABC abc E@ 拼音

Select input modes

- Press ◀ / ▶ on the remote control.
 - ↳ On the onscreen keyboard, current input mode is highlighted.

ABC : English input in upper case

abc : English input in low case

E@ : symbols

拼音 : Chinese Pinyin input

Enter text

- 1 On the remote control, press ▲▼◀▶ to move to a key, press OK to select the letter or symbol.
- 2 On the onscreen keyboard, select the input options by using the remote control:
← / → : Move the cursor to the left or right.
◀x : Delete the entry before the cursor.
- 3 When the text entry is complete, select OK on the onscreen keyboard to exit.


3 First-time setup

First-time setup

The first time you use **HMP5020**, do the following setup:

- In **[Menu Language]**, select the menu language on **HMP5020**;
- In **[Network Setup]**, connect **HMP5020** to your home network through Wi-Fi or an Ethernet cable.

To exit the setup screen,

- On the remote control, press .
↳ You enter the Home screen.

To change your setup options,

- From the Home screen, go to  **[Setup]**.

Connect to your home network

Connect **HMP5020** to a router (Access Point) wirelessly or through an Ethernet cable. You can connect **HMP5020** to the network that is built around the router. To connect to the Internet, make sure that the router connects to the Internet directly and no dial-up is required on the computer.



Note

- If MAC address filtering is enabled on your router, add the MAC address of **HMP5020** to the list of allowed devices. To find the MAC address, go to > **[Network Setup]** > **[Network Info]** from the Home screen.

Connect wirelessly



- 1 The first time you connect **HMP5020** to power, select **[Network Setup]** > **[Wireless (Wi-Fi)]** on the first-time setup page.
 - ↳ A pop-up screen is displayed for you to select connection options.
- 2 On the pop-up screen, select **[Scan Wi-Fi (Recommended)]**.
 - ↳ You can find a list of networks in range.
 - To refresh the list of networks, press **EDIT** on the remote control.
- 3 Select your network.
- 4 Select your connection option: **PIN**, **PBC**, or **[Standard]**.
 - ↳ A message is displayed when the connection is complete.
 - ↳ Next time you switch on **HMP5020**, **HMP5020** connects to the previously connected network automatically.
 - ↳ When **HMP5020** is connected to Wi-Fi, changes to on the Home screen.



Tip

- If you have disabled SSID broadcasting or hidden the Service Set Identifier (SSID) of the router, manually enter the SSID and password of the network. Go to **[Wireless (Wi-Fi)]** and select **[Manual (Advanced)]**.

One-touch Wi-Fi Protected Setup (WPS)

HMP5020 supports Wi-Fi Protected Setup (WPS). You can quickly and securely connect **HMP5020** to a wireless router that also supports the WPS.

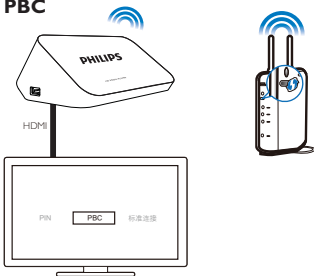
You can select one of the two setup methods: **PBC (Push Button Configuration)**, or **PIN (Personal Identification Number)**.



Tip

- Wi-Fi Protected Setup (WPS) is a standard created by Wi-Fi Alliance for easy establishment of secure wireless home network.

PBC



- 1 On the router, add **HMP5020**:
 - Consult the user manual of the router to learn how to add a WPS device to the router. For example:
press and hold the WPS push button.
↳ The router starts to search for **HMP5020**.
- 2 On **HMP5020**, select **PBC**.
 - ↳ On **HMP5020**, a message is displayed when the connection is complete.

PIN

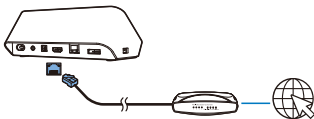
- 1 Write down the PIN that is displayed on **HMP5020**.
- 2 On your PC, enter the PIN on the router setup page:
 - Consult the user manual of the router to learn how to enter the PIN of the router.
- 3 On **HMP5020**, select **PIN**.

Standard connection

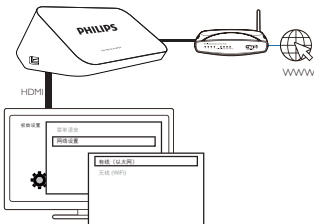
- 1 On **HMP5020**, select **[Standard]**.
- 2 On the pop-up screen, enter the password to the network (see “Enter text” on page 19).

Connect through an Ethernet cable

- 1 Use an Ethernet cable to connect **HMP5020** to the router.



- 2 The first time you connect **HMP5020** to power, select **[Network Setup] > [Wired (Ethernet)]** on the first-time setup page.
 - ↳ A pop-up screen is displayed for you to select connection options.



To use an IP address that the router assigns automatically,

- Select **[Auto (Recommended)]**.

- ↳ **HMP5020** starts to acquire an IP address.
- ↳ A message is displayed when the connection is complete.



Tip

- If the DHCP (Dynamic Host Configuration Protocol) is unavailable or disabled on the router, manually enter the IP address of the player.

To enter the IP address of the player manually,

- 1 Get the IP address of the router:
 - Consult the user manual of the router; or
 - To check for the settings of the router, enter the IP address (for example, 192.168.1.1) in the web browser (for example, Internet Explorer) of the computer: Get the information in the setup page.
- 2 On **HMP5020**, select **[Manual (Advanced)]**, and assign the IP address manually.
 - ① **On the player, enter an IP address that allows the player to be in the same subnet as the router.**
For example, if the router has
IP address: 192.168.1.1, Subnet mask: 255.255.255.000;
Then, enter the following on the player:
IP address: 192.168.1.XX (where XX denotes a number), Subnet mask:
255.255.255.000.

4 Play

On the HDTV, enjoy media play from

- the online service (Voole),
- a DLNA-compliant device on your home network,
- a USB mass storage device, or
- a hard disk drive with the eSATA connector.

Play from online services

Connect **HMP5020** to the Internet. You can enjoy online services on the HDTV.



Note

- Koninklijke Philips Electronics N.V. bears no responsibility for content provided by Net TV service providers.

Play from Voole

- 1 On the Home screen, select **Voole**.
↳ The Home screen of **Voole** is displayed.
- 2 Use the remote control to select your options.

Search for videos by category

- 1 Go to the Home screen of **Voole**.
- 2 On the left pane, press ▲ / ▼ and **OK** on the remote control to select a category.
 - If necessary, press ◀ repeatedly to go back to the left pane.
↳ Videos under the category are displayed.
- 3 Press ▶ to search for videos under the category:
 - Press ◀ / ▶ to move to the previous or next page;
 - Press ▲ ▼ ◀ ▶ and **OK** to select a video.

To return to the previous screen,

- Press ↶ on the remote control.

Search for videos by keyword

- 1 Go to the Home screen of **Voole**.
- 2 On the left pane, press ▲ / ▼ and **OK** to select 🔍.

↳ The onscreen keyboard is displayed.

3 Enter your keyword on the onscreen keyboard (see “Enter text” on page 19).

Select play options

During video play, do the following to select play options:


- Press ►|| to pause or resume play.
- Press ■ to stop play.
- Press ◀◀/▶▶ to fast forward or rewind; To select a speed, press ◀◀/▶▶ repeatedly.

Play from your home network

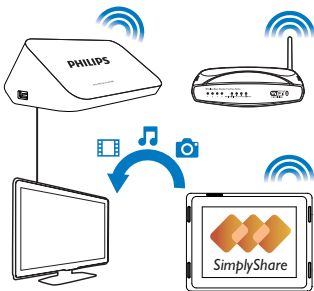
Connect HMP5020 to your home network through Wi-Fi or an Ethernet cable (see “First-time setup” on page 20).

With **HMP5020**, you can play media from a DLNA-compliant device on the same network. In this way, you can enjoy the media play through the HDTV that you connect to **HMP5020**.




The DLNA-compliant device can be:

- a Philips Android device that runs  **SimplyShare**, such as an Android tablet;
- a computer or device that runs the software of DLNA media server, such as Windows Media Player 11 or later.

Play media from a Philips Android device

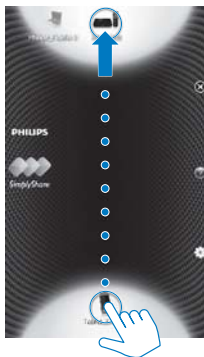


Play media from the Android device

- 1 Make sure that you have connected **HMP5020** to the same Wi-Fi network as your Philips Android device.
- 2 On the Philips Android device, go to  **SimplyShare**:
 - ① If necessary, go to Google Play or HiMarket to search for, download, and install  **SimplyShare**.
 - ② The first time you launch  **SimplyShare**, enter the activation code as prompted.



- ③ Find your Philips Android device and **HMP5020**.
- 3 Select **HMP5020** as the media player:
 - Drag your Philips Android device to **HMP5020**.



- 4 On the Philips Android device, find the media files that you want to play:
- Tap the icon of the Philips Android device.
 - ↳ You can find the music, photos, and videos that you store under the following folders on the device: **Music**, **Pictures**, and **Movies**.
 - ↳ You can also find the photos and videos that you take or record on the device.



- 5 Add media to the shared list:
- Tap **+** on the media file.

↳ You play the selected files on **HMP5020**.

Control the media play remotely


On your Philips Android device, you can control the media play on **HMP5020**.

- During media play, swipe left/right on the screen to switch between the play screen and the shared list:




On the play screen,

- Tap icons to select play options:

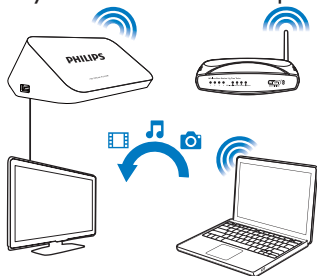
 Tap to pause/resume play.


 Tap to stop play.

On the shared list,

- Tap  to remove the media file from the shared list.
- Tap a media file to start play.

Play media files from a computer (DLNA)



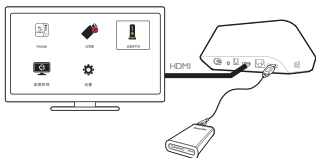
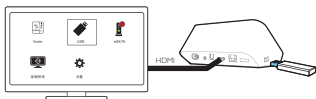
- 1 Make sure that you have connected **HMP5020** and the PC to the same network.
- 2 On the PC, launch the software of DLNA media server. Enable the media sharing function.
For example, in Windows Media Player 11, do the following:
 - ① Select **Library > Media Sharing ...**
 - ② Select the check box next to **Share my media to:**
 - ↳ If **HMP5020** is detected, you can find the name of **HMP5020** in the device list.
 - ③ If necessary, select the play and click **Allow**.
- 3 On the Home screen of **HMP5020**, select 
 - To browse the media files by folder, go to **[Shared Folder]**.
 - To browse the media files as sorted in the DLNA media server, go to **[Shared Media Files]**.
- 4 Use the remote control to search for and play media files on **HMP5020**.

Play from a mass storage device

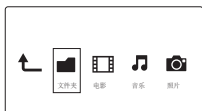
Through the HDTV, play media from a mass storage device that you connect to **HMP5020**. The mass storage device can be:

- a USB mass storage device, or

- a hard disk drive with the eSATA connector:




- 1 Connect your mass storage device to **HMP5020**:
 - For a USB mass storage device, connect to  on **HMP5020**.
 - For an eSATA hard disk drive, connect to **eSATA** on **HMP5020**.
- 2 On the Home screen, select **USB** or **eSATA**.
 - ↳ Media files are sorted as follows:
 - [Folder]**: Display all the files/ folders.
 - [Movies]**: Display movie files.
 - [Music]**: Display music files.
 - [Photos]**: Display photo files.



- 3 Select a file to start play.

Search for media files

- In the list of files or folders, press  **OPTIONS** to select your options:
 - In **[Folder]**:
 - To display files in different views,
 - Select **[Thumbnails]**, **[List]**, or **[Preview]**.
 - To show files by media type,
 - Select **[All Media]**, **[Movies]**, **[Photos]**, or **[Music]**.

In **[Movies]**, **[Music]**, and **[Photos]**:

To search for a file by keyword,

- Select **[Search]**. Enter the keyword on the onscreen keyboard.

To sort files in different ways,

- Select **[Sort Order]**.

To go to the folder view,

- Select **[Go to Folder]**.

Select play options

1 During play, press **OPTIONS** on the remote control.

2 Press **▲▼◀▶** to select an option. Press **OK** to confirm.

For videos,

[Subtitle]: Select a subtitle language

[Audio]: Select an audio language.

[GOTO]: Skip to the specific time, title, or chapter.

[Repeat Title]: Repeat current title.

[Repeat All]: Repeat the movie file.

[Repeat Off]: Switch off the repeat mode.

[Video Setting]: Select display options.

For music,

[Repeat Off]: Switch off the repeat mode.

[Repeat One]: Repeat current file.

[Repeat All]: Repeat all the files.

[Shuffle Loop]: Play all the files in random order.

For photo slideshow,

[Slide Timing]: Set the time interval before one slide switches to another.

[Slide Transition]: Set the transition mode between two slides.

[Repeat Off]: Switch off the repeat mode.

[Repeat All]: Play photos in current folder repeatedly.

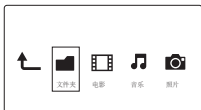
[Shuffle Loop]: Play photos in current folder in random order.

[Background Music]: Play a music file during the slideshow.

[Video Setting]: Select display options.

Manage files

On **HMP5020**, select **USB** or **eSATA** on the Home screen. Go to **[Folder]**, and you can manage files on the connected USB storage device.



Copy or move files and folders

- 1 In **[Folder]**, select a file or folder in the list of files/ folders.
To select multiple files,
 - ① On the remote control, press **EDIT**.
↳ A list of options is displayed.
 - ② Select **[Multiple Select]**.
↳ A file list is created for you to add files or folders.
 - ③ Press **▲ / ▼** to select a file or folder. Press **▶||** to confirm.
- 2 On the remote control, press **EDIT**.
- 3 On the pop-up list of options, select **[Copy]** or **[Move]**.
- 4 Select a folder as the destination. Press **▶||** to confirm.
↳ The selected files or folders are copied or moved to the destination.

Delete files and folders

- 1 Follow Step 1-3 under "Copy or move files and folders" (see "Copy or move files and folders" on page 33).
- 2 On the pop-up list of options, select **[Delete]**.
↳ The selected files or folders are deleted.

Rename files and folders

- 1 In **[Folder]**, select a file or folder in the list of files/ folders.
- 2 On the remote control, press **EDIT**.
- 3 On the pop-up list of options, select **[Rename]**.
- 4 On the pop-up onscreen keyboard, edit the file/ folder name (see "Enter text" on page 19).

Create music playlists

You can create playlists for music files you want to play together.

- 1 In **[Folder]**, select music files.

- ① On the remote control, press **EDIT**.
↳ A list of options is displayed.
- ② Select **[Multiple Select]**.
↳ A file list is created for you to add files.
- ③ Press **▲ / ▼** to select a file. Press **▶||** to confirm.

- 2 On the remote control, press **EDIT**.
- 3 On the pop-up list of options, select **[Save Playlist]**.
- 4 Name the playlist as needed.
↳ A music playlist is created.

Create photo albums

You can create photo albums for picture files.

- 1 In **[Folder]**, select picture files.
 - ① On the remote control, press **EDIT**.
↳ A list of options is displayed.
 - ② Select **[Multiple Select]**.
↳ A file list is created for you to add files.
 - ③ Press **▲ / ▼** to select a file. Press **▶||** to confirm.
- 2 On the remote control, press **EDIT**.
- 3 On the pop-up list of options, select **[Save Photo Album]**.
- 4 Name the photo album as needed.
↳ A photo album is created.

5 Setup

You can change the setup options of **HMP5020**.

- 1 On the Home screen, select **⚙ [Setup]**.
 - If necessary, press **🏠** on the remote control to go to the Home screen.

↳ The setup menu is displayed.

- 2 Press ▲▼◀▶ to select an option. Press **OK** to confirm the option.
- Press ↶ to return to the upper-level menu.

System

[Menu Language]: Select the language for onscreen menus.

[Subtitle]: Select the subtitle language for videos.

[Screen Saver Delay]: Enable the screen saver when **HMP5020** is in the idle mode for a selected time span, for example, in pause or stop mode. To exit the screen saver mode, press any key.

[Automatic Standby]: Switch **HMP5020** to standby mode when there is no button press or media play on **HMP5020** for 15 minutes.

[Product Network Name]: Edit how **HMP5020** is discovered by name in your home network.

[Request to Resume Play]: Allow you to select whether to resume video play from the last stop position.

[Reset Factory Defaults]: Restore factory settings.

Audio

[HDMI Audio Mode]: Select audio output for the HDMI connector.

[Optical output]: Select audio output for the **OPTICAL** connector.

[Lip Sync]: Synchronize audio with video play.

Video

[Aspect Ratio]: Select display aspect ratio.

***[TV System]:** Select the video resolution that your TV supports. See your TV manual for details.

[Video Zoom]: Zoom in or out video scenes.

***[1080P 24Hz]:** Use 1080p 24 Hz for video output, where 1080p 24 Hz denotes the resolution and frame rate.

[Deep Color]: Display colors with more shades and hues when the video content is recorded in Deep Color mode and the TV supports this feature.



Note

- *If the video resolution is incompatible with your TV, you can see a blank screen. To recover the display, wait for 10 seconds.

Network

[Wired (Ethernet)]: Connect to the network through an Ethernet cable.

[Wireless (Wi-Fi)]: Connect to a Wi-Fi network.

[Network Info]: Display current network status, such as the MAC address, and current IP address and subnet mask.

6 EasyLink

HMP5020 supports Philips EasyLink which uses the HDMI CEC (Consumer Electronics Control) protocol. You can use a single remote control to control EasyLink compliant devices that are connected through HDMI.

- 1 Through HDMI, connect **HMP5020** to a TV compliant with the HDMI CEC protocol.
- 2 On the TV, switch on the functions to allow HDMI CEC operations (Consult the user manual of the TV).
- 3 On **HMP5020**, switch on **[Easy Link]**.
 - On the Home screen, select **[Setup]** > **[Easy Link]**. Select **[On]**.
- 4 In **[Easy Link]**, you can select the following options:

[One Touch Play]

When you start play on **HMP5020**, the TV switches to the HDMI input channel automatically.

[One Touch Standby]

When you switch the TV to the standby mode, **HMP5020** switches to the standby mode automatically.

[Auto Power On From TV]

When you switch to the input channel of **HMP5020** on the TV, **HMP5020** can switch on automatically from the standby mode.



Note

- Philips does not guarantee 100% interoperability with all HDMI CEC devices.

7 Update the firmware of HMP5020

In *** [Setup] > [Software Upgrade]**, switch on **[Auto Upgrade Reminder]**.

You can receive a reminder when firmware updates are available and you have connected **HMP5020** to the Internet.

Before you update the firmware, check current the firmware version of **HMP5020**.

Go to *** [Setup] > [Software Upgrade] > [Version Info.]**.

Update the firmware through the Internet

- 1 Connect **HMP5020** to the Internet.
- 2 On the Home screen of **HMP5020**, select **[Setup] > [Software Upgrade] > [Check for Online Upgrades]**.
 - ↳ If a firmware update is detected, you are prompted to start the update.
- 3 Follow onscreen instructions to complete the update.
 - ↳ When the update is complete, **HMP5020** switches off automatically, and then switches on again.

Update the firmware through a USB storage device

- 1 On your computer, do the following:
 - ① Go to www.philips.com/support to find the latest firmware.
 - ② Search for your model and click on "Software and drivers".
 - ③ Download the firmware update and save the file to the root directory of a USB storage device.
- 2 On **HMP5020**, do the following:
 - ① Connect the USB storage device.
 - ② On the Home screen, select [Setup] > [Software Upgrade]> [USB upgrade].
 - ↳ If a firmware update is detected, you are prompted to start the update.
- 3 Follow onscreen instructions to complete the update.
 - ↳ When the update is complete, **HMP5020** switches off automatically, and then switches on again.



Caution

- Keep **HMP5020** powered on and the storage device mounted before the firmware update is complete.

8 Troubleshooting

If you contact Philips, you will be asked for the model and serial number of this player. The model number and serial number are at the bottom of this player. Write the numbers here:

Model No. _____

Serial No. _____

No picture.

- Refer to the TV user manual for how to select the correct video input channel

The contents of the USB storage device cannot be read.

- The format of this USB storage device is not supported.
- The supported memory size is 1TB maximum.
- Make sure that this player supports these files. (Refer to "Specifications" > "Playable media") .

9 Specification



Note

- Specification and design are subject to change without notice.

Power

- Input: 100-240V~ 50/60Hz, 15W
- Power consumption: < 15 W
- Power consumption in standby mode: < 1 W

Supported formats:

- Video: MPEG 1/2/4(MPEG 4 Part 2), H.264,VC-1, WMV9, Xvid, MKV, RMVB 8/9/10, RM, MPG, AVCHD, AVI, TS, M2TS, TP, IFO, ISO, VOB, DAT, MP4, MPEG, MOV (MPEG 4, H.264), ASF, FLV(640 x 480)
- Audio: Dolby digital, DTS, MPEG Audio, AAC, RA, OGG, MKA, ADPCM, AC3, WMA (V9), MP3, PCM, LPCM
- Picture: .JPEG, .JPG, .BMP, .PNG, .GIF (unanimated GIF), .TIF, .TIFF, .HD-JPEG

HDD & USB support

- Compatibility: Hi-Speed USB (2.0)
- NTFS, FAT32, FAT, EXT-3, HFS+
- USB MTP support, USB PTP support, USB MSC support

Subtitle support

- .srt, .sub, .smi, .ssa, .idx+.sub

Video

- HDMI output: 480i, 480p, 576i, 576p, 720p, 1080i, 1080p, 1080p24
- Composite video output: 1 Vpp ~ 75 ohm

Audio

- HDMI output
- Optical output
- Analog stereo output
- Signal to noise ratio (1 kHz): > 90 dB (A-weighted)
- Dynamic Range (1 kHz): > 80 dB (A-weighted)
- Frequency response: +/-0.2 dB

Main Unit

- Dimensions (L x W x H): 160 x 91 x 54.1 mm
- Net Weight: 0.34 Kg

NOTICE

SOFTWARE END USER LICENSE AGREEMENT

THIS SOFTWARE END USER LICENSE AGREEMENT ("THIS AGREEMENT") IS A LEGAL AND BINDING AGREEMENT BETWEEN YOU (EITHER AN INDIVIDUAL OR ENTITY) AND PHILIPS CONSUMER LIFESTYLE B.V. A DUTCH LIMITED LIABILITY COMPANY, WITH ITS PRINCIPAL OFFICE AT HIGH TECH CAMPUS 37, 5656 AE EINDHOVEN, THE NETHERLANDS AND ITS SUBSIDIARY COMPANIES (INDIVIDUALLY AND COLLECTIVELY "PHILIPS"). THIS AGREEMENT GIVES YOU THE RIGHT TO USE CERTAIN SOFTWARE (THE "SOFTWARE") INCLUDING USER DOCUMENTATION IN ELECTRONIC FORM WHICH MAY HAVE BEEN PROVIDED SEPARATELY OR TOGETHER WITH A PHILIPS PRODUCT (THE "DEVICE") OR A PC. BY DOWNLOADING, INSTALLING OR OTHERWISE USING THE SOFTWARE, YOU ACCEPT AND AGREE TO BE BOUND BY ALL OF THE TERMS AND CONDITIONS OF THIS AGREEMENT. IF YOU DO NOT AGREE TO THESE TERMS AND CONDITIONS, DO NOT DOWNLOAD, INSTALL OR OTHERWISE USE THE SOFTWARE. IF YOU ACQUIRED THE SOFTWARE IN TANGIBLE MEDIA E.G. CD WITHOUT THE OPPORTUNITY TO REVIEW THIS LICENSE AND DO NOT ACCEPT THESE TERMS, YOU MAY RECEIVE A FULL REFUND OF THE AMOUNT, IF ANY, THAT YOU PAID FOR THE SOFTWARE IF YOU RETURN THE SOFTWARE UNUSED WITH PROOF OF PAYMENT WITHIN 30 DAYS FROM THE DATE OF PURCHASE.

- 1. Grant of License.** This Agreement grants you a non-exclusive, nontransferable, non-sub licensable license to install and use, on the Device or a PC, as applicable, one (1) copy of the specified version of the Software in object code format as set out in the user documentation solely for your personal use. The Software is "in use" when it is loaded into the temporary or permanent memory (i.e. RAM, hard disk, etc.) of the PC or the Device.

2. **Ownership.** The Software is licensed and not sold to you. This Agreement grants you only the right to use the Software, but you do not acquire any rights, express or implied, in the Software other than those specified in this Agreement. Philips and its licensors retain all right, title, and interest in and to the Software, including all patents, copyrights, trade secrets, and other intellectual property rights incorporated therein. The Software is protected by copyright laws, international treaty provisions, and other intellectual property laws. Therefore, other than as expressly set forth herein, you may not copy the Software without prior written authorization of Philips, except that you may make one (1) copy of the Software for your back-up purposes only. You may not copy any printed materials accompanying the Software, nor print more than one (1) copy of any user documentation provided in electronic form, except that you may make one (1) copy of such printed materials for your back-up purposes only.
3. **License Restrictions.** Except as provided otherwise herein, you shall not rent, lease, sublicense, sell, assign, loan, or otherwise transfer the Software. You shall not, and you shall not permit any third party, to reverse engineer, decompile, or disassemble the Software, except to the extent that applicable law expressly prohibits the foregoing restriction. You may not remove or destroy any product identification, copyright notices, or other proprietary markings or restrictions from the Software. All titles, trademarks, and copyright and restricted rights notices shall be reproduced on your back up copy of the Software. You may not modify or adapt the Software, merge the Software into another program or create derivative works based upon the Software.
4. **Termination of certain functionality.** The Software may contain components of certain licensed software including software licensed from Microsoft Corporation ("Microsoft") which implements Microsoft's digital rights management technology for Windows Media. Content providers are using the digital rights management technology for Windows Media ("WM-DRM") to protect the integrity of their content ("Secure Content") so that their intellectual property, including copyright, in such content is not misappropriated. Your Device may also use WM-DRM software to transfer or play Secure Content ("WM-DRM Software"). If the security of such

WM-DRM Software is compromised, Microsoft may revoke (either on its own or upon the request of the owners of Secure Content ("Secure Content Owners")) the WM-DRM Software's right to acquire new licenses to copy, store, transfer, display and/or play Secure Content. Revocation does not alter the WM-DRM Software's ability to play unprotected content. A list of revoked WM-DRM Software is sent to your PC and/or your Device whenever you download a license for Secure Content. Microsoft may, in conjunction with such license, also download revocation lists onto your Device on behalf of Secure Content Owners, which may disable your Device's ability to copy, store, display, transfer, and/or play Secure Content. Secure Content Owners may also require you to upgrade some of the WM-DRM components distributed with this Software ("WM-DRM Upgrades") before accessing their content. When you attempt to play Secure Content, WM-DRM Software built by Microsoft will notify you that a WM-DRM Upgrade is required and then ask for your consent before the WM-DRM Upgrade is downloaded. WM-DRM Software built by Philips may do the same. If you decline the upgrade, you will not be able to access Secure Content that requires the WM-DRM Upgrade; however, you will still be able to access unprotected content and Secure Content that does not require the upgrade. WM-DRM features that access the Internet, such as acquiring new licenses and/or performing a required WM-DRM Upgrade, can be switched off. When these features are switched off, you will still be able to play Secure Content if you have a valid license for such content already stored on your Device. However, you will not be able to use certain of the WM-DRM Software features that require Internet access such as the ability to download content that requires the WM-DRM Upgrade. All title and intellectual property rights in and to the Secure Content is the property of the respective Secure Content owners and may be protected by applicable copyright or other intellectual property laws and treaties. This Agreement grants you no rights to use such Secure Content. **To summarize, if the Software contains Microsoft WM-DRM components – Secure Content you desire to download, copy, store, display, transfer, and/or play is protected by the Microsoft WM-DRM components of the Software. Microsoft, Secure Content Owners, or Secure Content distributors**

may deny you access, or restrict your access, to Secure Content even after you have paid for, and/or obtained, it. Neither your consent nor the consent or approval of Philips is necessary for any of them to deny, withhold or otherwise restrict your access to Secure Content. Philips does not guaranty that you will be able to download, copy, store, display, transfer, and/or play Secure Content.

5. **Open Source Software.** (a) This software may contain components that are subject to open-source terms, as stated in the documentation accompanying the Device. This Agreement does not apply to this software as such. (b) Your license rights under this Agreement do not include any right or license to use, distribute or create derivative works of the Software in any manner that would subject the Software to Open Source Terms. "Open Source Terms" means the terms of any license that directly or indirectly (1) create, or purport to create, obligations for Philips with respect to the Software and/or derivative works thereof; or (2) grant, or purport to grant, to any third party any rights or immunities under intellectual property or proprietary rights in the Software or derivative works thereof.
6. **Termination.** This Agreement shall be effective upon installation or first use of the Software and shall terminate (i) at the discretion of Philips, due to your failure to comply with any term of this Agreement; or (ii) upon destruction of all copies of the Software and related materials provided to you by Philips hereunder. Philips's rights and your obligations shall survive the termination of this Agreement.
7. **Upgrades.** Philips may, at its sole option, make upgrades to the Software available by general posting on a website or by any other means or methods. Such upgrades may be made available pursuant to the terms of this Agreement or the release of such upgrades to you may be subject to your acceptance of another agreement.
8. **Support Services.** Philips is not obligated to provide technical or other support ("Support Services") for the Software. If Philips does provide you with Support Services, these will be governed by separate terms to be agreed between you and Philips.

9. **Limited Software Warranty.** Philips provides the Software 'as is' and without any warranty except that the Software will perform substantially in accordance with the documentation accompanying the Software for a period of one year after your first download, installation or use of the Software, whichever occurs first. Philips' entire liability and your exclusive remedy for breach of this warranty shall be, at Philips' option, either (i) return of the price paid by you for the Software (if any); or (b) repair or replacement of the Software that does not meet the warranty set forth herein and that is returned to Philips with a copy of your receipt. This limited warranty shall be void if failure of the Software has resulted from any accident, abuse, misuse or wrongful application. Any replacement Software will be warranted for the remainder of the original warranty period or thirty (30) days, whichever is longer. This limited warranty shall not apply to you if the Software was provided to you free of charge on an evaluation only basis.
10. **NO OTHER WARRANTIES.** EXCEPT AS SET FORTH ABOVE, PHILIPS AND ITS LICENSORS DO NOT WARRANT THAT THE SOFTWARE WILL OPERATE ERROR FREE OR UNINTERRUPTED, OR WILL MEET YOUR REQUIREMENTS. YOU ASSUME ALL RESPONSIBILITIES FOR SELECTION OF THE SOFTWARE TO ACHIEVE YOUR INTENDED RESULTS, AND FOR THE INSTALLATION OF, USE OF, AND RESULTS OBTAINED FROM THE SOFTWARE. TO THE MAXIMUM EXTENT PERMITTED BY APPLICABLE LAW, PHILIPS AND ITS LICENSORS DISCLAIM ALL WARRANTIES AND CONDITIONS, WHETHER EXPRESS OR IMPLIED, INCLUDING BUT NOT LIMITED TO THE IMPLIED WARRANTIES OF MERCHANTABILITY, FITNESS FOR A PARTICULAR PURPOSE, AND ACCURACY OR COMPLETENESS OF RESULTS WITH RESPECT TO THE SOFTWARE AND THE ACCOMPANYING MATERIALS. THERE IS NO WARRANTY AGAINST INFRINGEMENT. PHILIPS DOES NOT WARRANT THAT YOU WILL BE ABLE TO DOWNLOAD, COPY, STORE, DISPLAY, TRANSFER, AND/OR PLAY SECURE CONTENT.
11. **LIMITATION OF LIABILITY.** UNDER NO CIRCUMSTANCES WILL PHILIPS OR ITS LICENSORS BE LIABLE FOR ANY CONSEQUENTIAL,

SPECIAL, INDIRECT, INCIDENTAL OR PUNITIVE DAMAGES WHATSOEVER, INCLUDING, WITHOUT LIMITATION, DAMAGES FOR LOSS OF PROFITS OR REVENUES, BUSINESS INTERRUPTION, LOSS OF BUSINESS INFORMATION, LOSS OF DATA, LOSS OF USE OR OTHER PECUNIARY LOSS, EVEN IF PHILIPS OR ITS LICENSORS HAVE BEEN ADVISED OF THE POSSIBILITY OF SUCH DAMAGES. IN NO EVENT SHALL PHILIPS' OR ITS LICENSORS' AGGREGATE LIABILITY FOR DAMAGES ARISING OUT OF THIS AGREEMENT EXCEED THE GREATER OF THE PRICE ACTUALLY PAID BY YOU FOR THE SOFTWARE OR FIVE POUNDS STERLING (5.00).

12. **Trademarks.** Certain of the product and Philips names used in this Agreement, the Software, and the printed user documentation may constitute trademarks of the Philips, its licensors or other third parties. You are not authorized to use any such trademarks.
13. **Export Administration.** You agree that you will not directly or indirectly, export or re-export the Software to any country for which the United States Export Administration Act, or any similar United States law or regulation requires an export license or other U.S. Government approval, unless the appropriate export license or approval has first been obtained. By downloading or installing the Software you agree to abide by this Export provision.
14. **Governing law.** This Agreement is governed by the laws of your country of residence, without reference to its conflict of laws principles. Any dispute between you and Philips regarding this Agreement shall be subject to the non-exclusive jurisdiction of the courts of your country of residence.
15. **General.** This Agreement contains the entire agreement between you and Philips and supersedes any prior representation, undertaking or other communication or advertising with respect to the Software and user documentation. If any part of this Agreement is held invalid, the remainder of this Agreement will continue in full force and effect. This Agreement shall not prejudice the statutory rights of any party dealing as a consumer.

WRITTEN OFFER

Philips Electronics Hong Kong Ltd. 特此承诺，若用户有此要求，并出具相应的许可证，我们将向其提供本产品中所用的受版权保护的开源软件包的全部源代码副本。

本承诺自任何人购买本产品并收到此信息后三年内有效。要获得源代码，请联系 contact.open.source@philips.com。如果您不想使用电子邮件，或者在邮寄到此电子邮件地址后一周内没有收到确认回执，请写信至“Open Source Team, Philips Intellectual Property & Standards, P.O. Box 220, 5600 AE Eindhoven, The Netherlands.” 如果您没有及时收到确认函件，请发送电子邮件到上述电子邮件地址。

WRITTEN OFFER

Philips Electronics Hong Kong Ltd. hereby offers to deliver, upon request, a copy of the complete corresponding source code for the copyrighted open source software packages used in this product for which such offer is requested by the respective licenses. This offer is valid up to three years after product purchase to anyone in receipt of this information. To obtain source code, please contact open.source@philips.com. If you prefer not to use email or if you do not receive confirmation receipt within a week after mailing to this email address, please write to “Open Source Team, Philips Intellectual Property & Standards, P.O. Box 220, 5600 AE Eindhoven, The Netherlands.” If you do not receive timely confirmation of your letter, please email to the email address above.



Specifications are subject to change without notice
© 2012 Koninklijke Philips Electronics N.V.
All rights reserved.

HMP5020_93_UM_V1.1 wk1246.2



