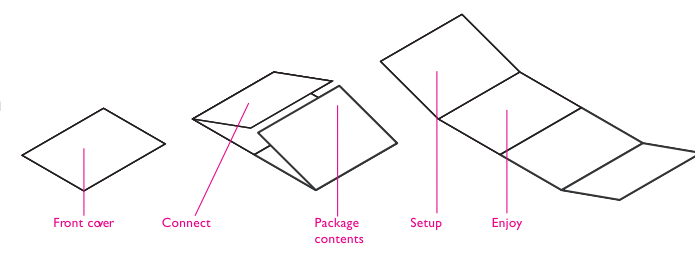
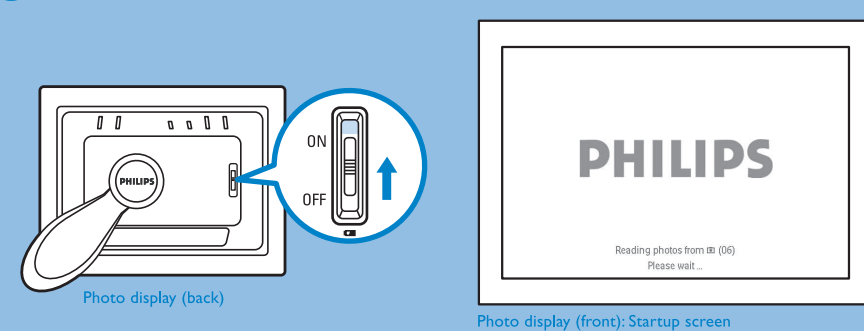


Artwork: Photo display Quick Start Guide
 Extend: 4pp + 4pp
 Size: Open: 591W x 210Hmm Close: 148.5W x 210Hmm
 Material: 140gsm White, silk coated
 Printing: 2C x 2C – Pantone 3005C + Black
 Finishing: Folded sheet
 Date prepared: August 05 2006



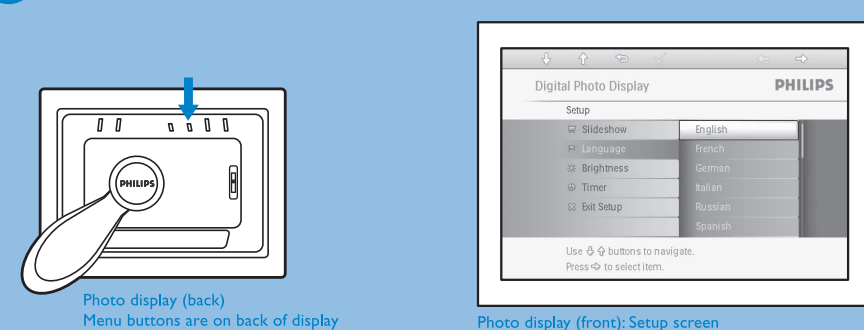
2 Setup

A Turn on photo display



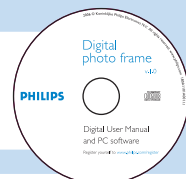
- Slide power switch up to **ON** position
 > The power LED will be green and the Startup screen will appear

B Choose language



- Press **SETUP** key to enter **SETUP**
- Press **Left/Right** keys to select **LANGUAGE** settings and **Enter** key to enter
- Press **Left/Right** keys to select and **Enter** key to set your language
- Use **Back** key to return and exit **SETUP**

For other Setup preferences, see digital user manual



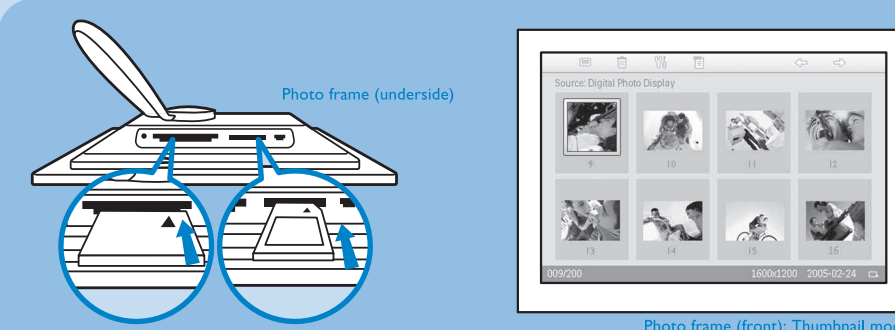
3 Enjoy

View pre-stored photos



- There are 3 view modes for you to choose from. Press **Mode** key to toggle between the modes
- Use **Left/Right** key to view the previous photo and **Next** key to view the next
- Photos pre-stored on the display will appear if no memory card

View digital camera photos from memory card



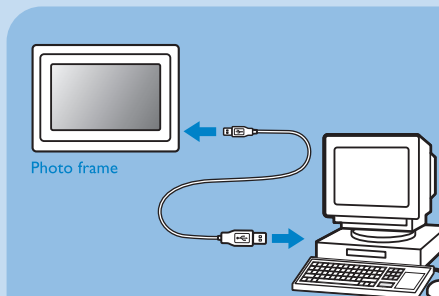
- Insert your memory card into the photo frame
- > After a few seconds photos on your memory card will appear

Copy photos from your memory card



- Use **Left/Right** keys to select photo
- Press **Copy** key to copy photo
- > Small photos of 4 different orientations will appear
- Select the correct orientation of the photo and press **Copy** key
- Photo frame will keep a resized copy of the photo until its internal memory is full
- Press **Mode** in Thumbnail mode and follow screen instructions for multi-photo delete
- Press **Mode** to select correct orientation for each photo after multi-photo copy

To copy Photos from PC to Photo Display

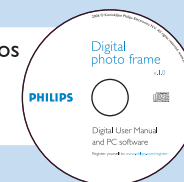


After installing Photo Frame Auto Run PC Software to PC, (User manual and Auto Run software on CD)

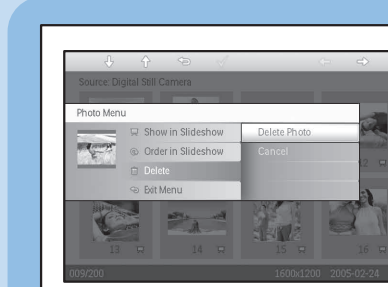
- Connect the supplied PC USB cable to Photo Frame
- Connect the PC USB cable plug to the PC

> The application will start automatically and provide easy-to-use user interface for user to browse and preview the photos in both PC directories and Photo Frame albums, and for user to perform operations, such as copying, moving and deleting photo(s).

For transferring photos from PC and other operations, see digital user manual

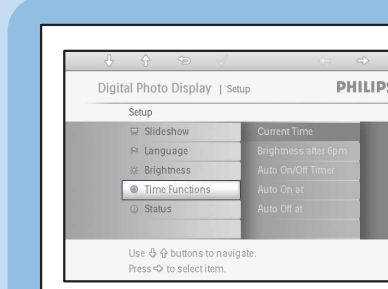


Delete photos from digital photo frame



- Press **Mode** key, select **DELETE**, highlight **DELETE PHOTO**, and press **Enter** to confirm
- Press **Mode** in Thumbnail mode and follow screen instructions for multi-photo delete
- Photo frame can not delete photos on memory cards or digital cameras

Set Time-related functions



- Set 6PM-6AM brightness
 You may select a different brightness level for photo frame in the evening
- Press **Mode** key to enter **SETUP**
- Go to **TIME FUNCTIONS** and choose **6PM-6AM BRIGHTNESS**
- Press **Left/Right** to select and **Enter** to confirm

- Set Auto on/off timer
 Photo frame can be enabled to turn on and off at pre-set times daily
- Press **Mode** key to enter **SETUP**
- Go to **TIME FUNCTIONS** and choose **AUTO ON/OFF TIMER**
- Press **Left/Right** and **Enter** to enable this feature
- Go to **AUTO ON AT** setting to set turn on time
- Go to **AUTO OFF AT** setting to set turn off time

- Set current time
 Current time must be set before enabling other time-related functions
- Press **Mode** key to enter **SETUP**
- Press **Left/Right** key to enter **CURRENT TIME** setting
- Press **Left/Right** to set hours and minutes
- Press **Enter** to confirm

What' in the box

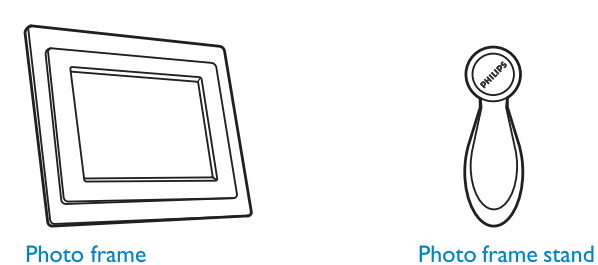
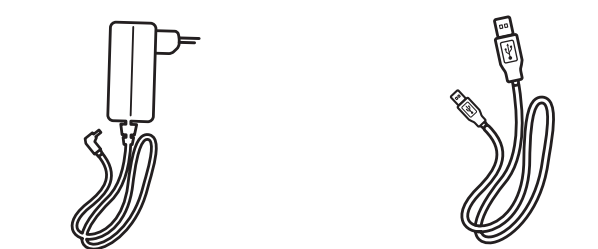


Photo frame Photo frame stand

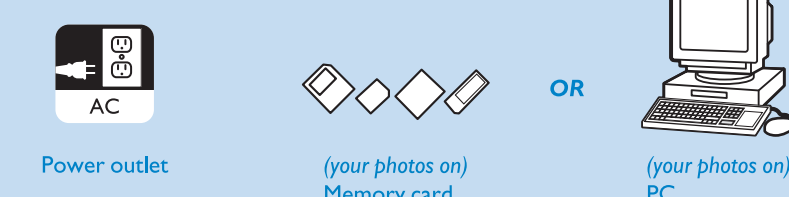


Quick start guide Digital user manual



Power adaptor USB cable to PC (male USB type A plug)

What else you'll need



Power outlet (your photos on) Memory card OR (your photos on) PC

Frequently Asked Questions

- Q Is the LCD screen touch-enabled?
 A The LCD screen is not touch-enabled. Use the keys in the back to control Digital photo frame
- Q After copying photos, how can I check if the photos are already stored inside?
 A The photos are copied after the screen confirms with "photo copied" message. You may then remove the card/ camera to view internal photos.
- Q Can I switch between different slideshows photos by using different memory cards?
 A Yes, Digital photo frame will slideshow photos stored in the card or camera currently connected
- Q Will the LCD screen be damaged if I keep showing the same photo for a long time?
 A No, Digital photo frame can display the same photo continuously without any damage to the LCD screen
- Q Can I use Digital photo frame to delete photos on memory card or camera?
 A No, it does not support operations to delete photos on external devices
- Q Can I print photos from Digital photo frame?
 A No, it does not support direct photo printing
- Q What can I do if my digital camera does not work with digital photo frame?
 A Currently some cameras are not compatible with digital photo frame. Please use compatible memory cards to view photos instead.

Need help?

User manual
 See the digital User manual that comes with your photo frame
 Online help: www.p4c.philips.com

180B1101A11001

PHILIPS Specifications are subject to change without notice. Trademarks are property of Koninklijke Philips Electronics N.V. or their respective owners. © 2006 Koninklijke Philips Electronics N.V. All rights reserved. www.philips.com

Digital photo frame 7FF1 series

Quick start guide

- Connect
- Setup
- Enjoy



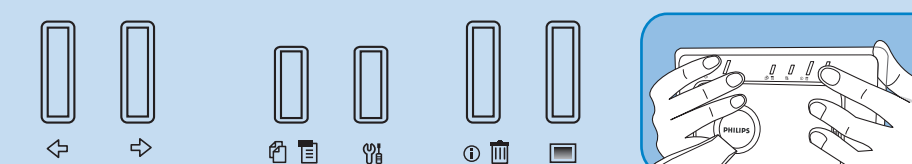
Display design may differ from that illustrated

PHILIPS

1 Connect

Locate control keys

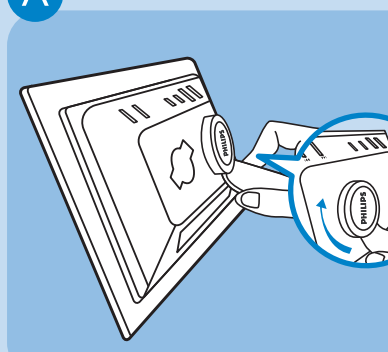
- Use your photo frame by pressing the control keys in the back.



LCD display also shows the function icon for each key at the same position

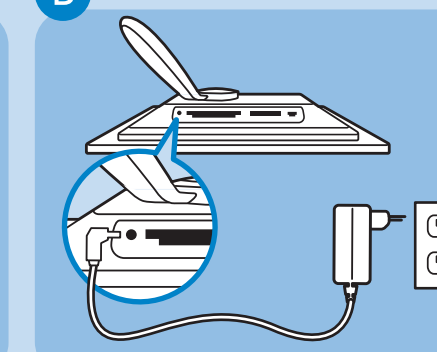
- | | | |
|-----------------|-----------------|------------------|
| ← Previous/Left | ⚙ Setup | ⏪ Switch view |
| → Next/Right | 📄 Photo setting | 🔍 Show/Hide icon |
| ⬆ Up | ✓ Confirm | 📄 Copy |
| ⬇ Down | ⏪ Escape | 🗑 Delete |

A Attach stand



- Place head of stand in socket
- Rotate clockwise until stand locks in-place

B Connect power



- Connect the supplied power cable from the photo frame to a power outlet
- > The internal battery will be charged at the same time